

COMPONENT MAP
TOP SIDE

REVISION HISTORY

E. C. N.	ZONE	REV	DESCRIPTION	DATE	APPROVED		
					DWN	CM	PE
		2	INITIAL RELEASE FOR PRODUCTION.	12-06-05	KLW		EB
		3	SEE 138977-1_3.XLS FOR COMPONENT DATA AND REVISION HISTORY.	12-30-05	KLW		EB
		4	SEE 138977-1_4.XLS FOR COMPONENT DATA AND REVISION HISTORY.	03-17-06	KLW		EB

7

6

5

4

3

2

1

A

B

C

D

E

F

G

H

I

J

K

L

M

ALL TO220
PACKAGES
ARE MOUNTED
TO THE BOTTOM
OF THE BOARD

UNCONTROLLED

UNLESS OTHERWISE MARKED IN RED INK BY CM AS A CONTROLLED COPY, COPIES OF THESE DOCUMENTS INCLUDING ASSOCIATED ELECTRONIC REPRODUCTIONS ARE FOR REFERENCE ONLY.

THESE DRAWINGS AND SPECIFICATIONS ARE THE PROPERTY OF CROWN INTERNATIONAL, INC. AND SHALL NOT BE REPRODUCED, COPIED, OR USED AS THE BASIS FOR THE MANUFACTURE OR SALE OF APPARATUS OR DEVICES WITHOUT PERMISSION.

DISTRIBUTION

DWN

KLW

12-06-05

FILENAME

138977-1_4_01.PCB

TOLERANCE UNLESS OTHERWISE SPECIFIED

.00 = $\pm .02$ "
.000 = $\pm .010$ "
DRILLS = $\pm .003$ "

DO NOT SCALE DRAWING

CM

PE

EB

12-06-05

Crown
INTERNATIONAL, INC.

1718 W. MISHAWAKA RD.
ELKHART IN, 46517
PHONE 574-294-8000
WWW.CROWNAUDIO.COM

TITLE

PWA, FR1 MAIN

SIZE

B

DWG NO.

138977-1

REV

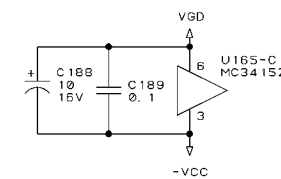
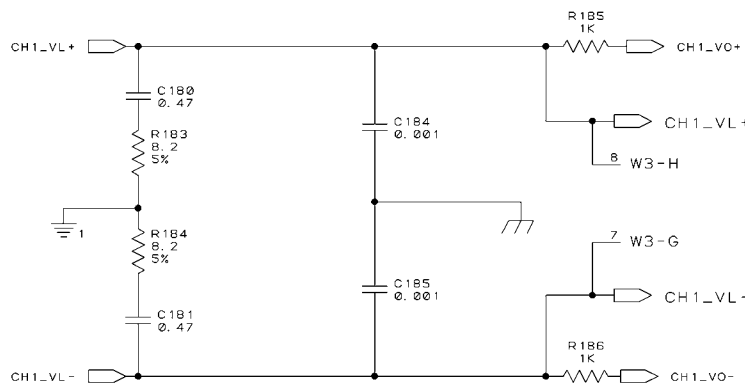
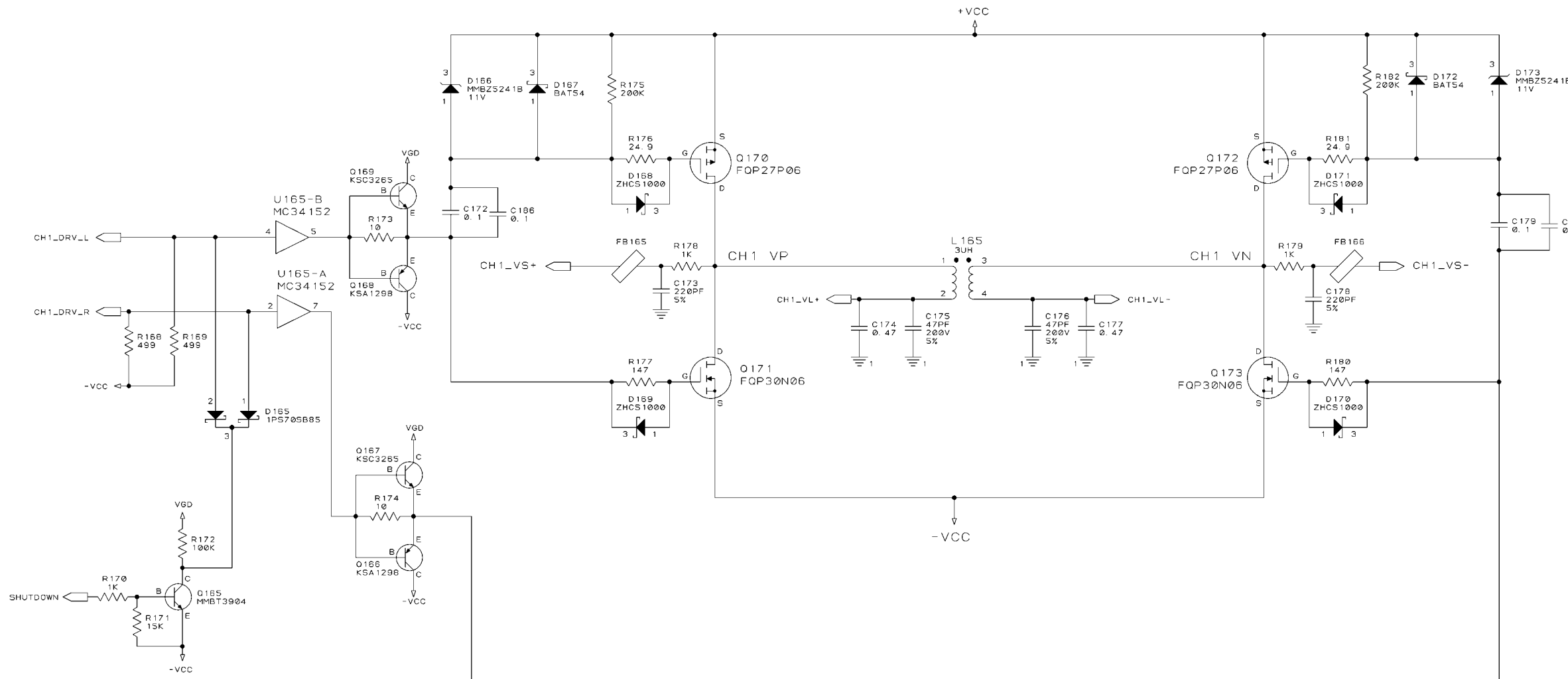
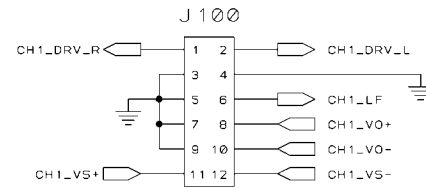
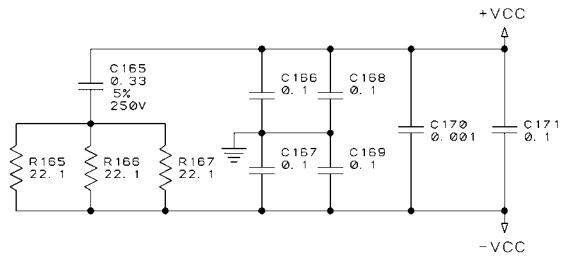
4

SCALE NONE

PROJ NO. MAMPJB0

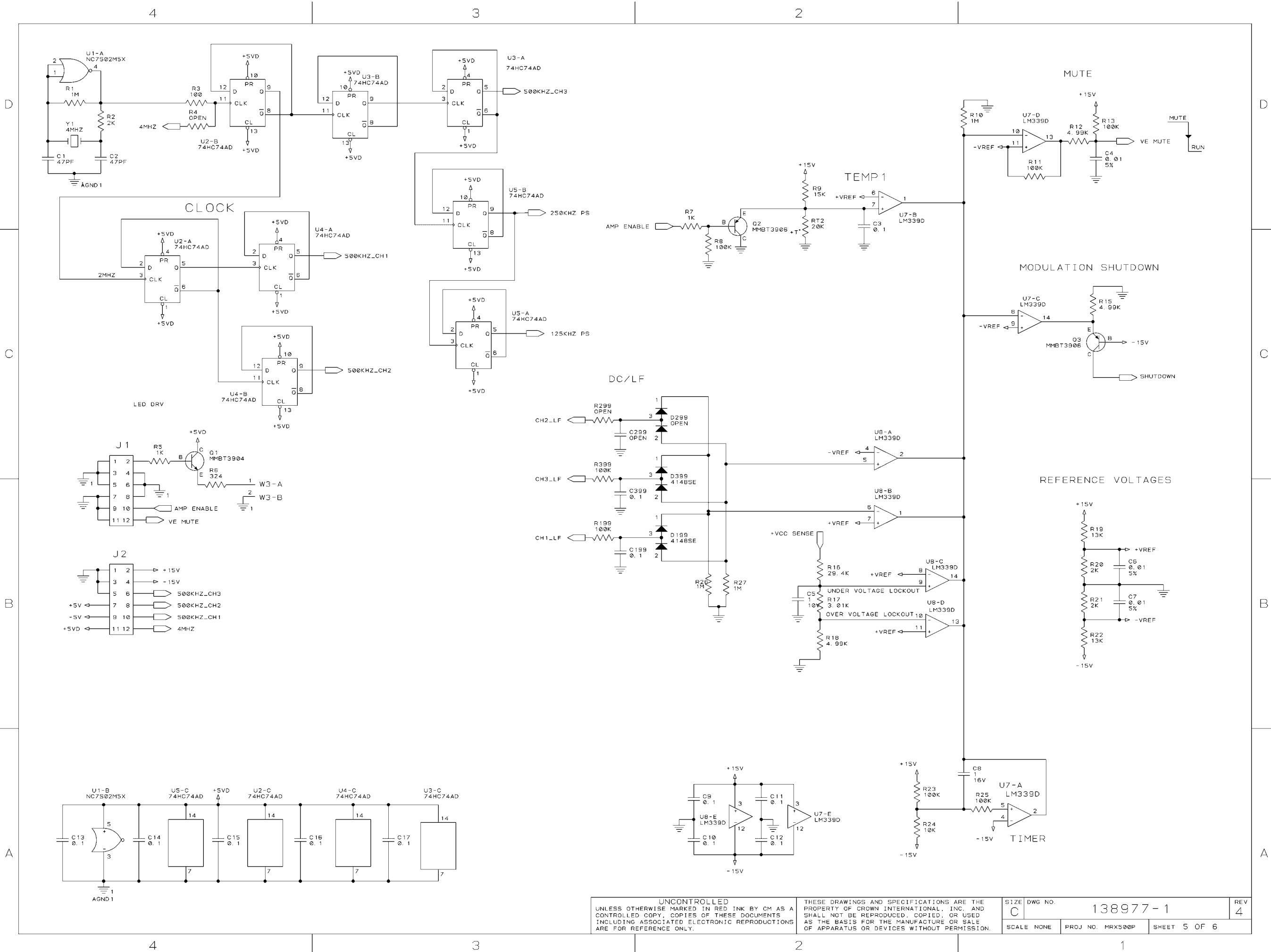
SHEET 1 OF 6

POWER SUPPLY FILTERING

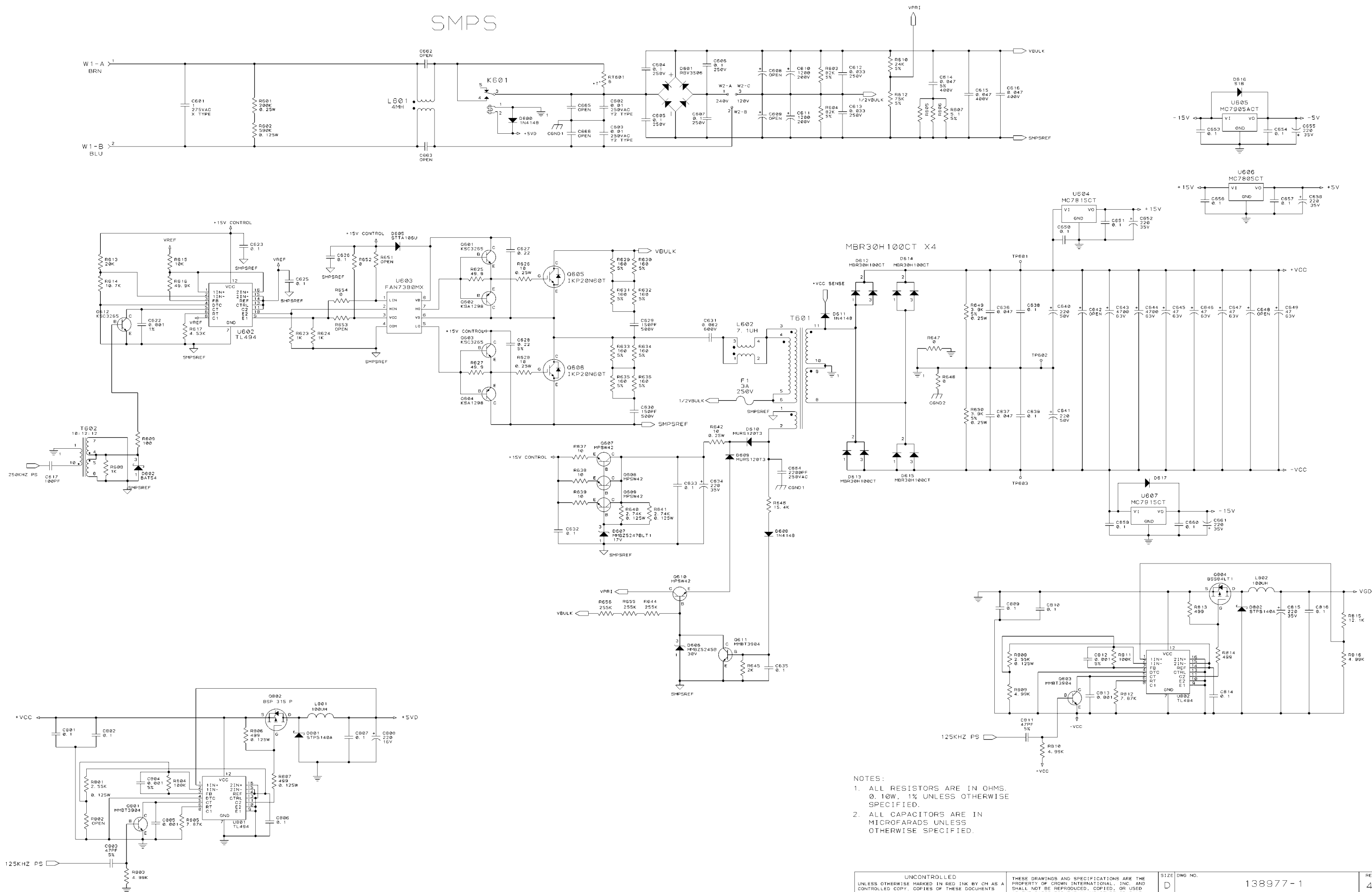


CH1 OUTPUT

UNCONTROLLED UNLESS OTHERWISE MARKED IN RED INK BY CM AS A CONTROLLED COPY, COPIES OF THESE DOCUMENTS INCLUDING ASSOCIATED ELECTRONIC REPRODUCTIONS ARE FOR REFERENCE ONLY.		THESE DRAWINGS AND SPECIFICATIONS ARE THE PROPERTY OF CROWN INTERNATIONAL, INC. AND SHALL NOT BE REPRODUCED, COPIED, OR USED AS THE BASIS FOR THE MANUFACTURE OR SALE OF APPARATUS OR DEVICES WITHOUT PERMISSION.		SIZE C	DWG NO. 138977-1	REV 4
SCALE NONE		PROJ NO. MRX500P		SHEET 2 OF 6		



SMPS



- NOTES:
- ALL RESISTORS ARE IN OHMS. 0.10W, 1% UNLESS OTHERWISE SPECIFIED.
 - ALL CAPACITORS ARE IN MICROFARADS UNLESS OTHERWISE SPECIFIED.

THESE DRAWINGS AND SPECIFICATIONS ARE THE PROPERTY OF JBL INCORPORATED THEY ARE ISSUED IN STRICT CONFIDENCE AND SHALL NOT BE REPRODUCED, COPIED, OR USED AS THE BASIS FOR MANUFACTURING OR SALE OF APPARATUS WITHOUT WRITTEN PERMISSION.

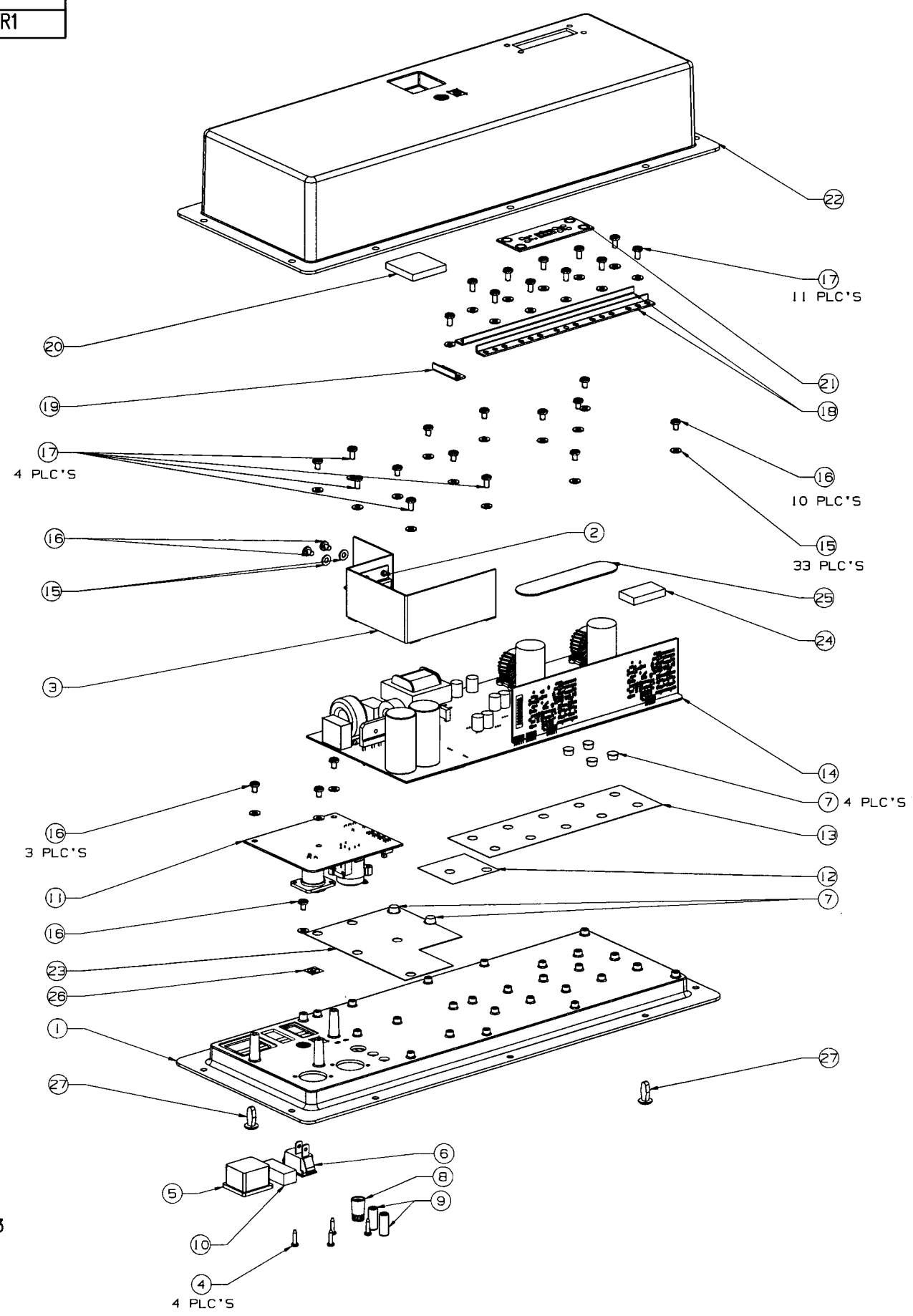
ALL MATERIAL SPECIFIED ON THIS DRAWING SHALL COMPLY WITH EUROPEAN DIRECTIVE 2002/95/EC. **RoHS**

PART NO	DESCRIPTION
362099-001	AMP. ASSEMBLY, FR1

REVISIONS					
CHG	LTR	DESCRIPTION	DRFT	CHK	DATE
31783	T1	PRE-RELEASE FOR QUOTATION	FL		4/6/06

RECOMMENDED ASSEMBLY TORQUES

ITEM No.	PART No.	TORQUE SETTINGS
4	A10111-70408	5-6 IN LBS.
16	137892-1	9-11 IN LBS.
17	138942-1	9-11 IN LBS.



ITEM	QTY	DESCRIPTION	PART NO.
27	2	FASTENER, CJ2000D BUTTON	135678-1
26	1	LABEL, VDE EARTH GROUND	D 7037-1
25	1	COVER, DP3 4 CAP	138161-1
24	1	FOAM, MRX MODULATOR	139379-1
23	1	INSULATOR, MRX CHASSIS	139241-1
22	1	CHASSIS, MRX BOTTOM	362059-001
21	1	PWA, MRX SPEAKER INTERFACE	138927-1
20	1	FOAM, MRX XFMR SUPPORT	138941-1
19	1	CLIP, MRX IGBT	138556-1
18	2	CLIP, MRX TO-220	138555-1
17	15	SCREW, M4X8 PH(+)	138942-1
16	16	SCREW, M4X6 PH(+)	137892-1
15	31	WASHER, M4 CONICAL	137633-1
14	1	PWA, FR1 MAIN	138977-1
13	1	SILPAD, MRX	138525-1
12	1	SILPAD, MRX IGBT	138745-1
11	1	INPUT MODULE, FR1 & FR2	362902-001
10	1	SWITCH, VOLTAGE SELECTOR	138539-1
9	2	PUSHBUTTON, .75 BEADED	D6013-3
8	1	KNOB, XS PRODUCT	135957-1
7	6	BUMPER, .37DIA X .19H	133766-1
6	1	SWITCH, SPST FR HIGH INRUSH 20A	127146-1
5	1	IEC SNAP IN 15A UL/10A VDE	139258-1
4	4	SCREW, #4X.5 PN HD PH AB BZ	A10111-70408
3	1	SHIELD, MRX	138521-1
2	1	CLIP, MRX AMPLIFIER	138922-1
1	1	CHASSIS, MRX FRONT	362223-001

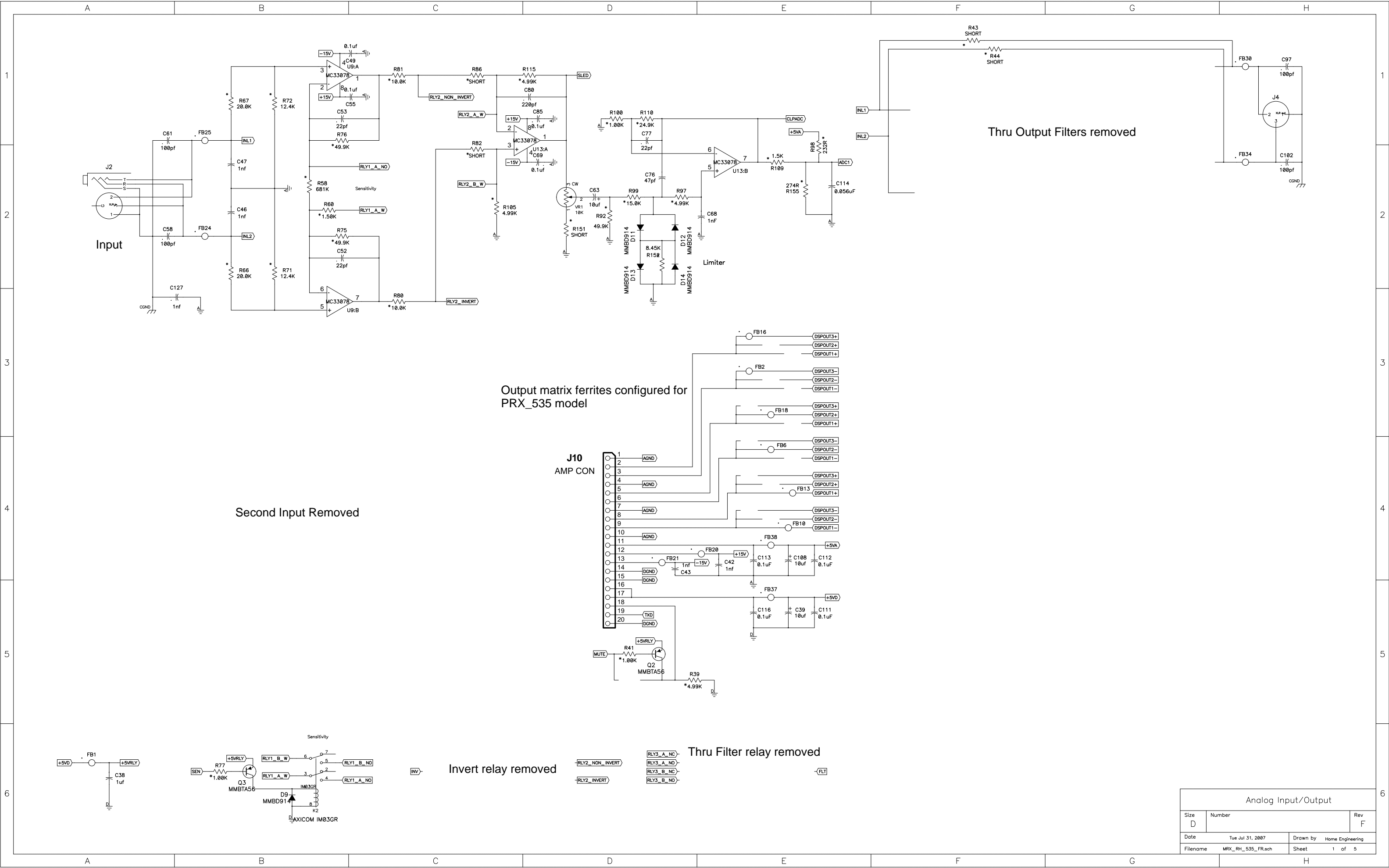
1. REFERENCE CROWN PART NUMBER #139693

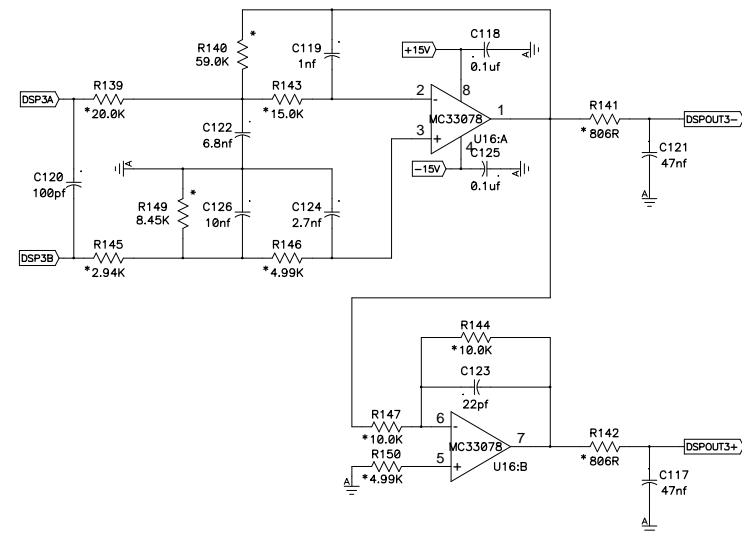
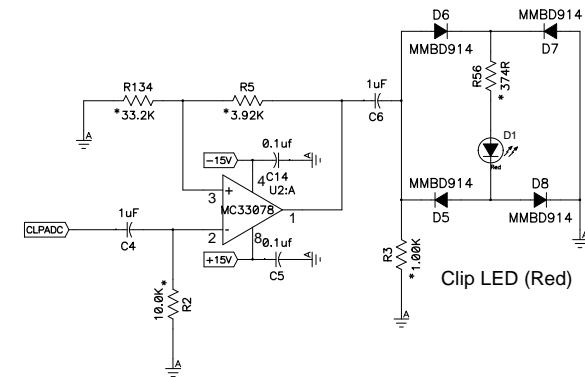
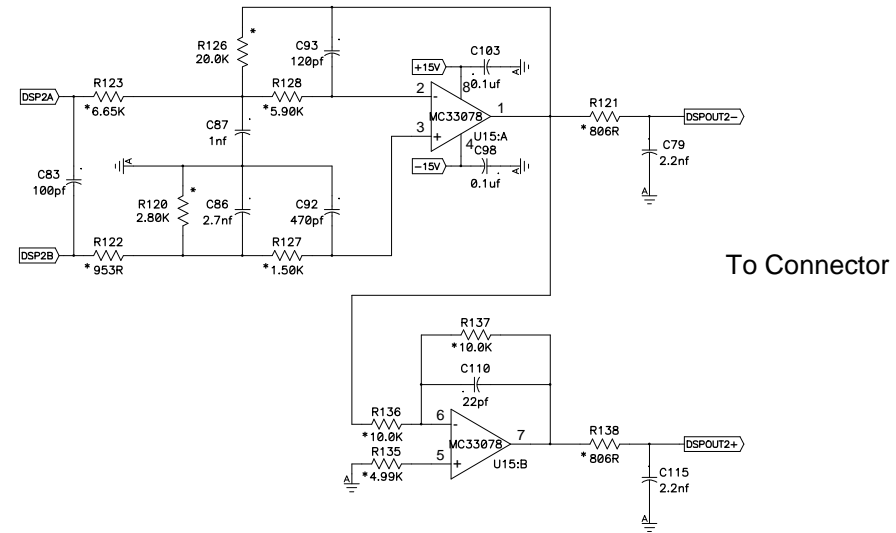
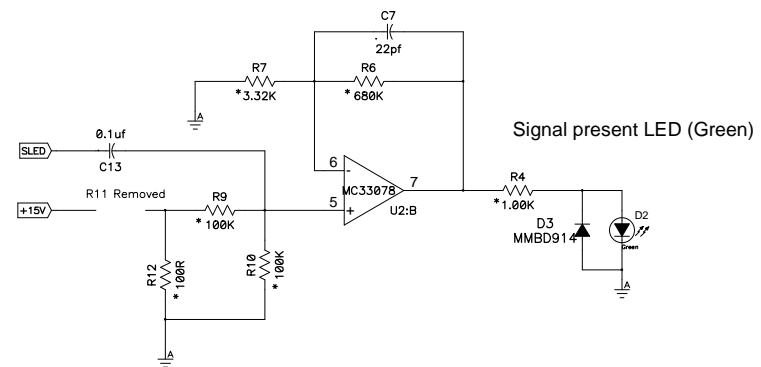
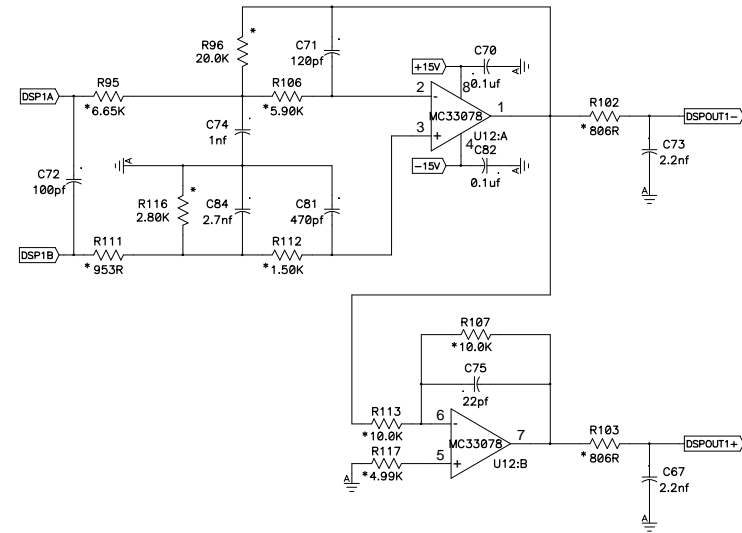
NOTES: (UNLESS OTHERWISE SPECIFIED)

UNCONTROLLED COPY

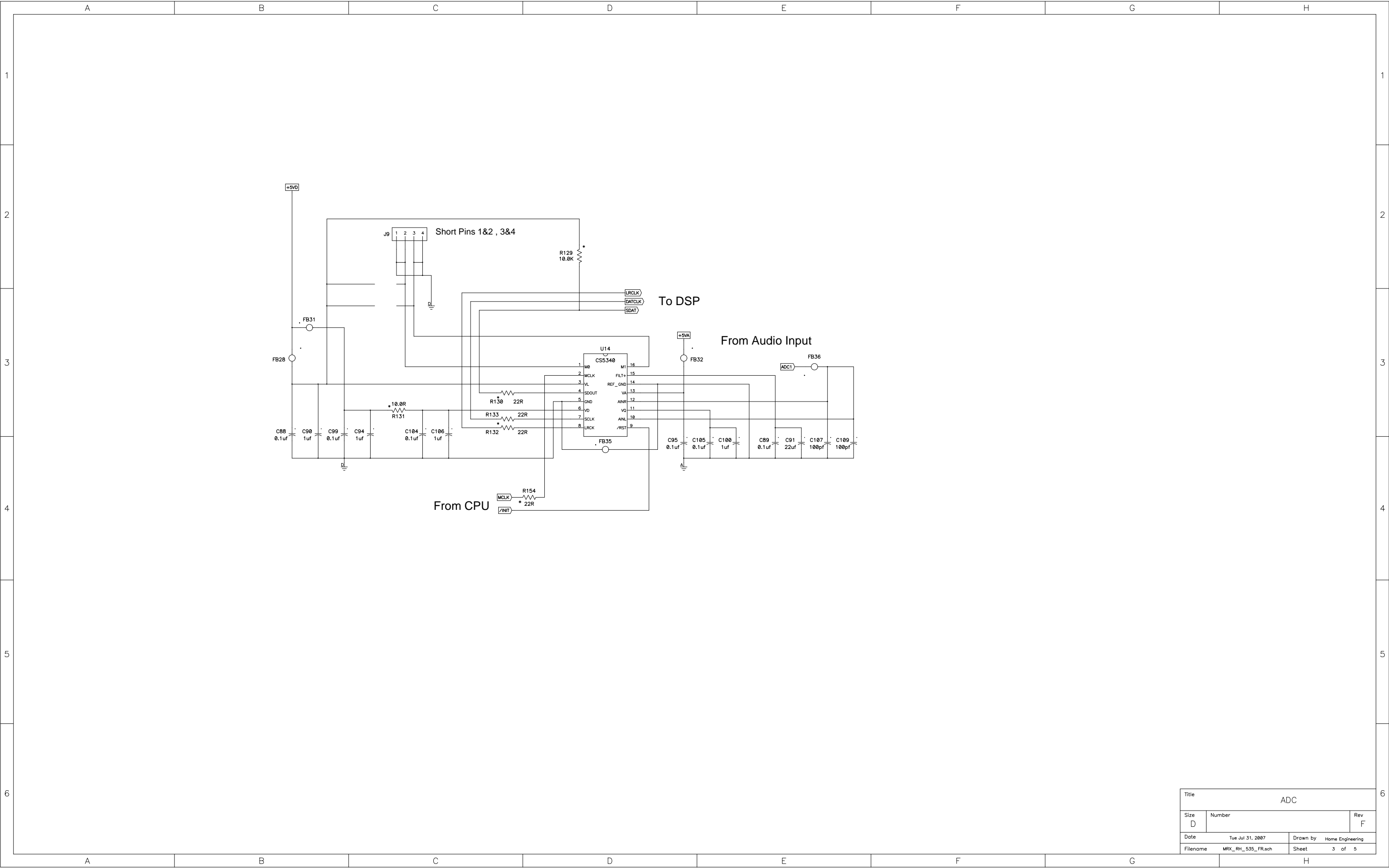
ITEM	PART NO.	DESCRIPTION	REMARKS/REF P/N'S
TOLERANCES UNLESS OTHERWISE SPECIFIED: XXX ± .005 INCH XX ± .010 INCH X ± .020 INCH FRACTIONAL ± 1/32 ANGULAR ± 30°		DATE 04/04/06	JBL Professional A Harman International Company Northridge, California 91329, U.S.A.
DRAWN BY FL		DATE	TITLE AMP, ASSEMBLY
DESIGNER		DATE	REV T1
ENGR		DATE	SCALE NTS
THIRD ANGLE PROJECTION		SHEET 1 OF 1	

FR1

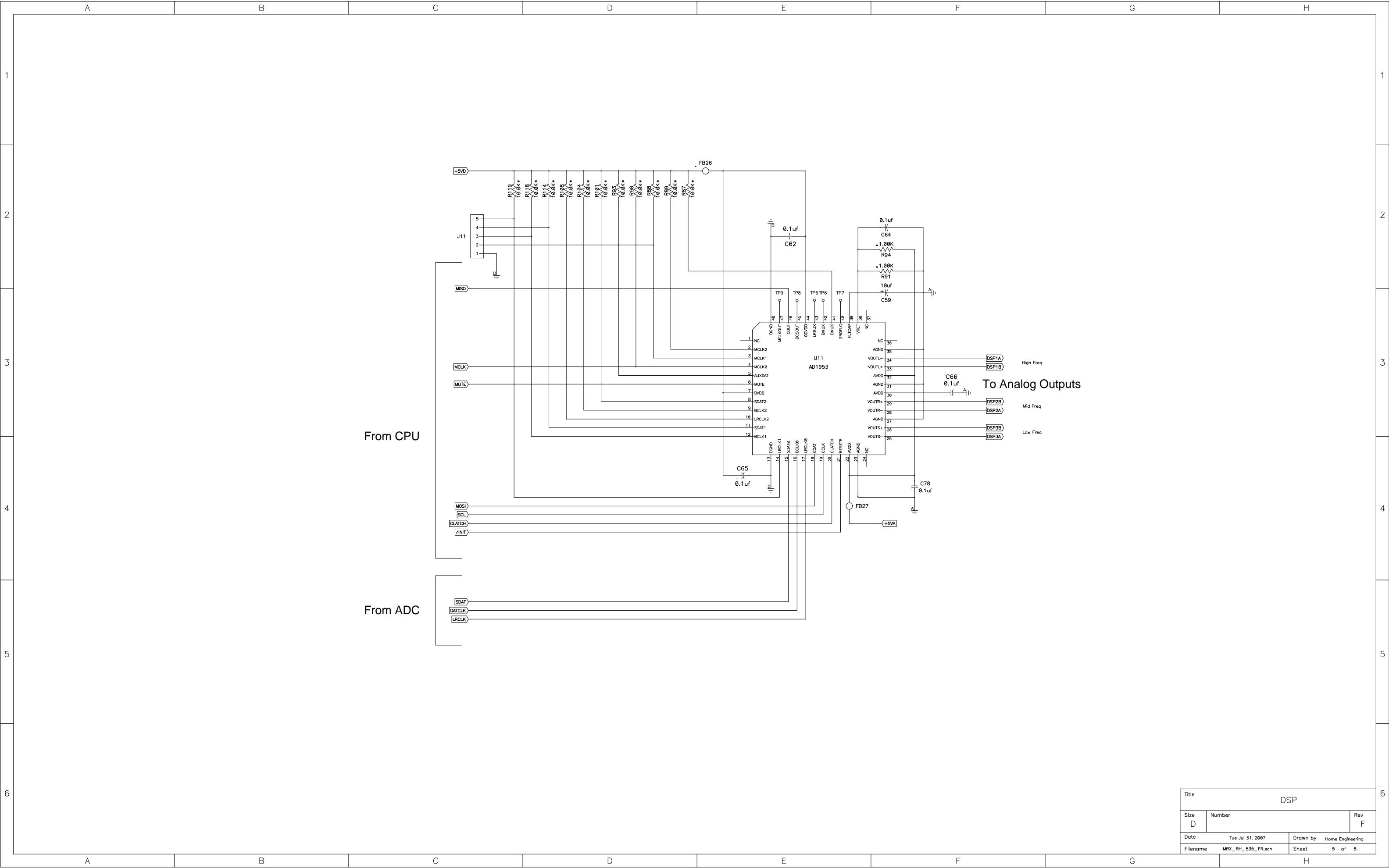




Title				Analog Filters			
Size D		Number				Rev F	
Date				Tue Jul 31, 2007		Drawn by Home Engineering	
Filename				MRX_RH_535_FR.sch		Sheet 2 of 5	

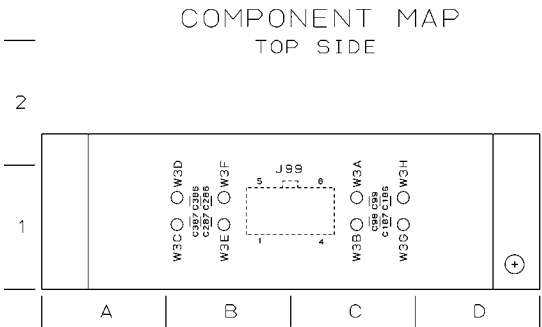


Title			ADC
Size	Number	Rev	
D		F	
Date	Tue Jul 31, 2007	Drawn by	Home Engineering
Filename	MRX_RH_535_FR.sch	Sheet	3 of 5




Title			DSP		
Size	Number				Rev
D					F
Date	Tue Jul 31, 2007		Drawn by	Home Engineering	
Filename	MRX_RH_535_FR.sch		Sheet	5 of 5	

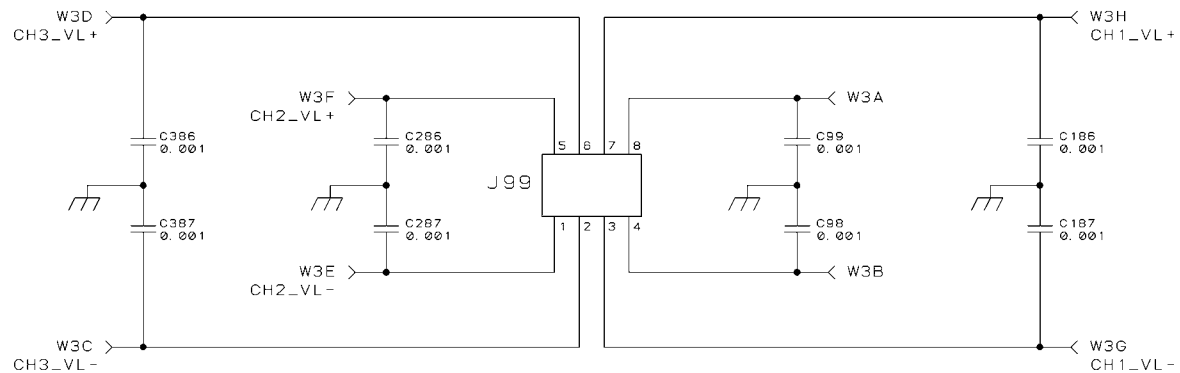
REVISION HISTORY							
E. C. N.	ZONE	REV	DESCRIPTION	DATE	APPROVED		
					DWN	CM	PE
		1	RELEASE FOR PROTOTYPE.	08-29-05	KLW		EB
		2	SEE 138927-1_2.XLS FOR COMPONENT DATA AND REVISION HISTORY.	12-06-05	KLW		EB
		3	SEE 138927-1_3.XLS FOR COMPONENT DATA AND REVISION HISTORY.	12-30-05	KLW		EB



UNCONTROLLED
UNLESS OTHERWISE MARKED IN RED INK BY CM AS A
CONTROLLED COPY. COPIES OF THESE DOCUMENTS
INCLUDING ASSOCIATED ELECTRONIC REPRODUCTIONS
ARE FOR REFERENCE ONLY.

THESE DRAWINGS AND SPECIFICATIONS ARE THE
PROPERTY OF CROWN INTERNATIONAL, INC. AND
SHALL NOT BE REPRODUCED, COPIED, OR USED
AS THE BASIS FOR THE MANUFACTURE OR SALE
OF APPARATUS OR DEVICES WITHOUT PERMISSION.

DISTRIBUTION			DWN	KLW	08-29-05	 Crown INTERNATIONAL, INC.		1718 W. MISHAWAKA RD. ELKHART IN. 46517 PHONE 574-294-8000 WWW.CROWNAUDIO.COM	
			CM						
FILENAME			PE	EB	08-29-05	TITLE			
138927-1_3_01.PCB						PWA, MRX SPEAKER INTERFACE			
TOLERANCE UNLESS OTHERWISE SPECIFIED						SIZE		DWG NO.	REV
.00 = ±.02"						B		138927-1	3
.000 = ±.010"									
DRILLS = ±.003"									
DO NOT SCALE DRAWING						SCALE NONE		PROJ NO. MAMPJB0	SHEET

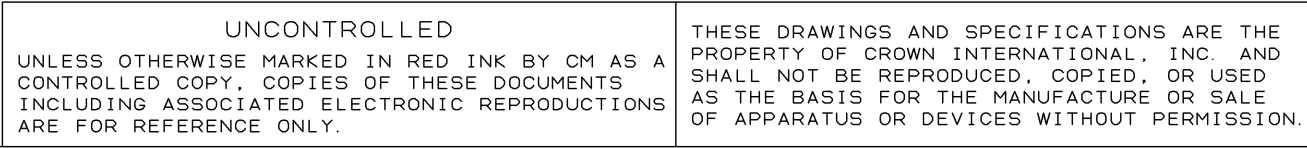


FR2 SPEAKER INTERFACE

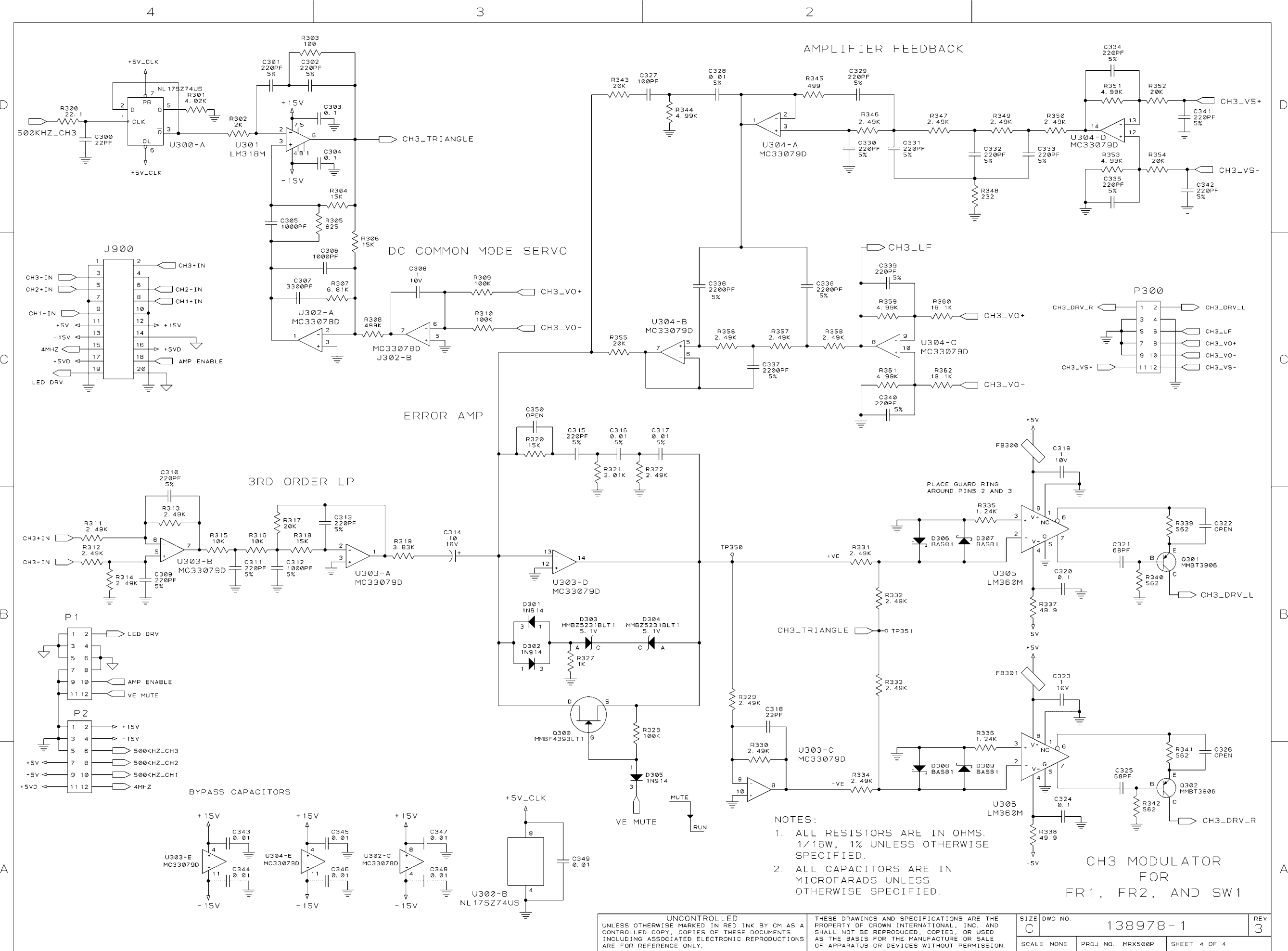
UNCONTROLLED UNLESS OTHERWISE MARKED IN RED INK BY CM AS A CONTROLLED COPY. COPIES OF THESE DOCUMENTS INCLUDING ASSOCIATED ELECTRONIC REPRODUCTIONS ARE FOR REFERENCE ONLY.		THESE DRAWINGS AND SPECIFICATIONS ARE THE PROPERTY OF CROWN INTERNATIONAL, INC. AND SHALL NOT BE REPRODUCED, COPIED, OR USED AS THE BASIS FOR THE MANUFACTURE OR SALE OF APPARATUS OR DEVICES WITHOUT PERMISSION.		SIZE B	DWG NO. 138927-1	REV 3
SCALE NONE		PROJ NO. MRX500P		SHEET 2 OF 2		

COMPONENT MAP

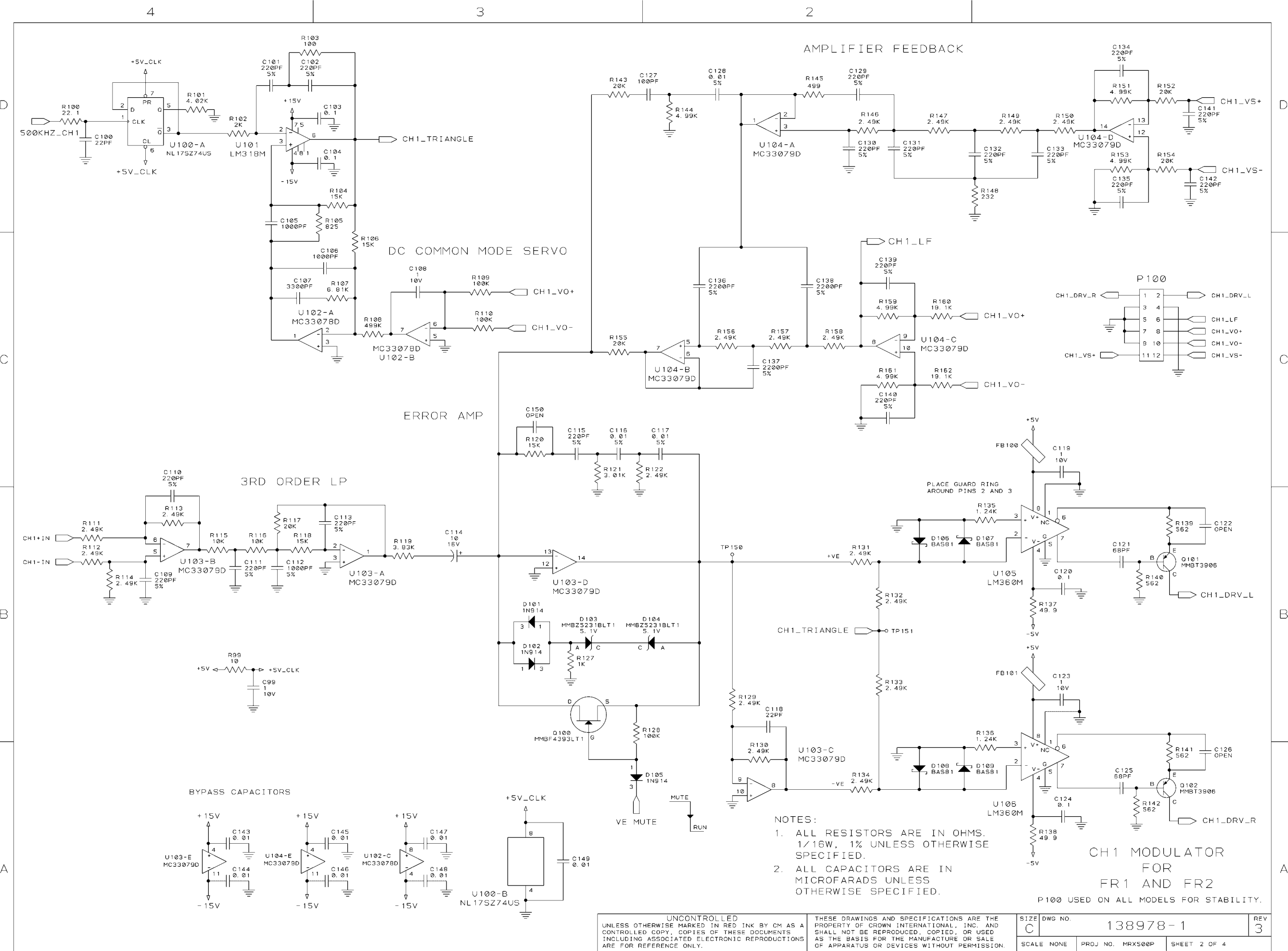
TOP SIDE



Crown
INTERNATIONAL, INC.



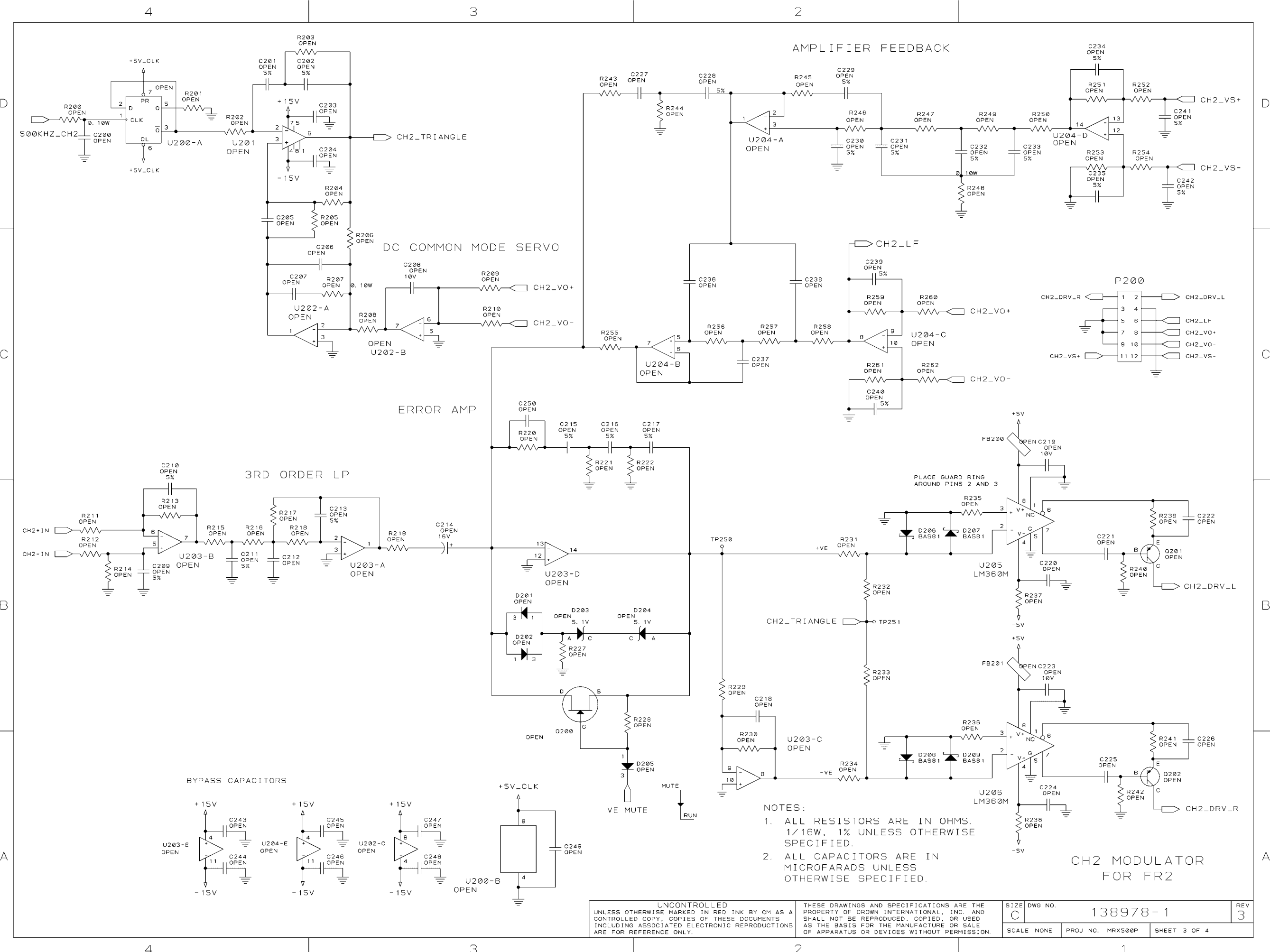
- NOTES:
1. ALL RESISTORS ARE IN OHMS. 1/16W, 1% UNLESS OTHERWISE SPECIFIED.
 2. ALL CAPACITORS ARE IN MICROFARADS UNLESS OTHERWISE SPECIFIED.



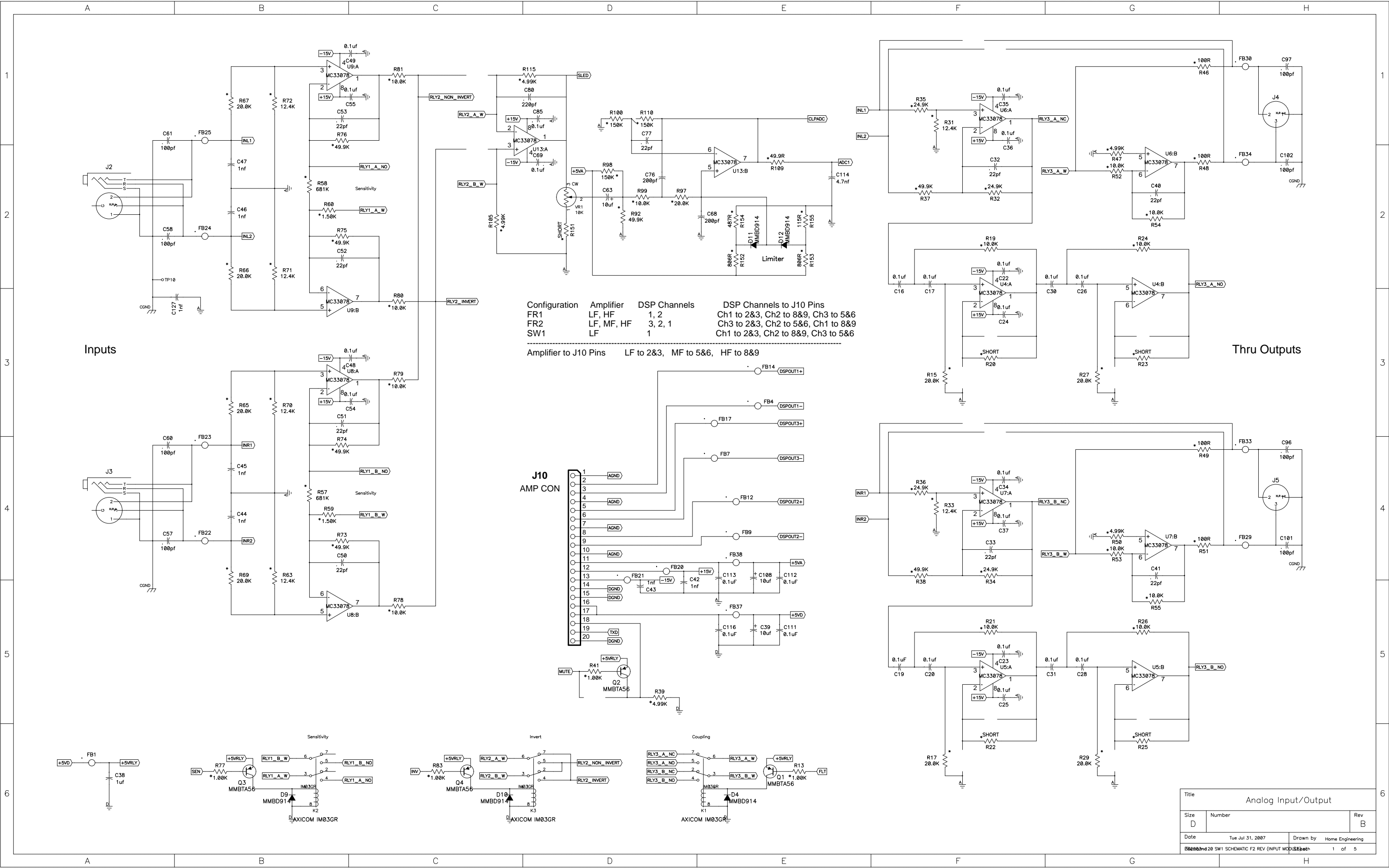
- NOTES:
1. ALL RESISTORS ARE IN OHMS. 1/16W, 1% UNLESS OTHERWISE SPECIFIED.
 2. ALL CAPACITORS ARE IN MICROFARADS UNLESS OTHERWISE SPECIFIED.

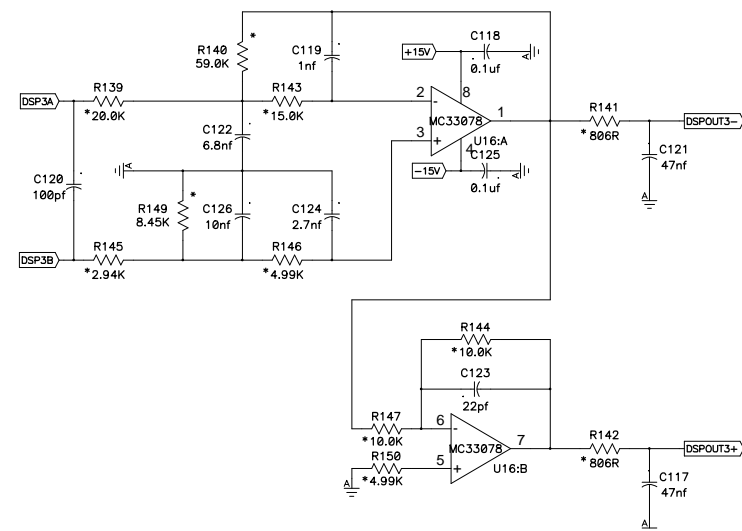
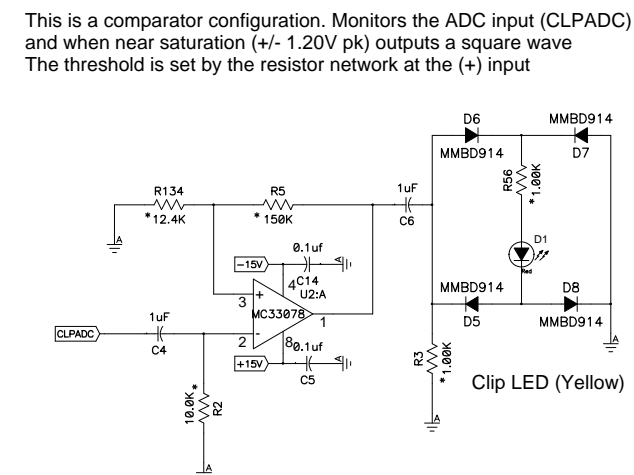
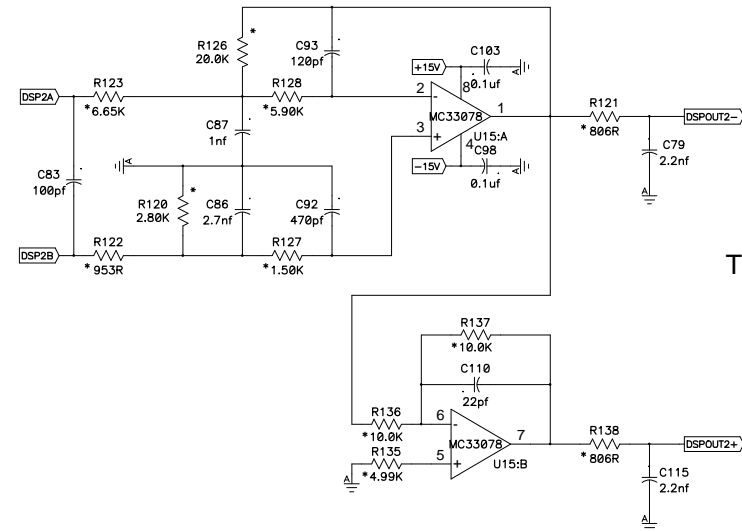
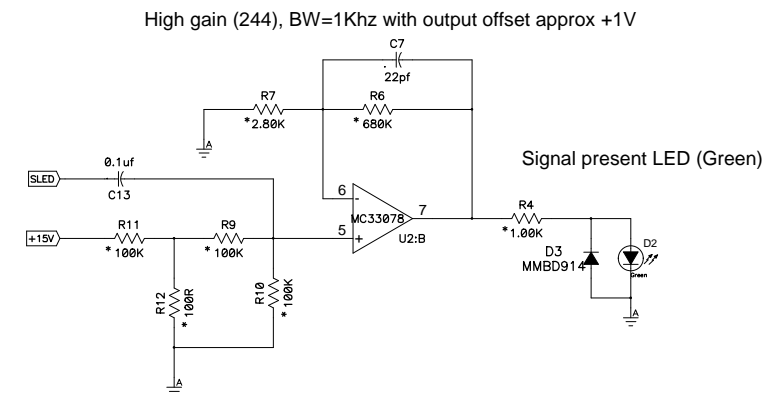
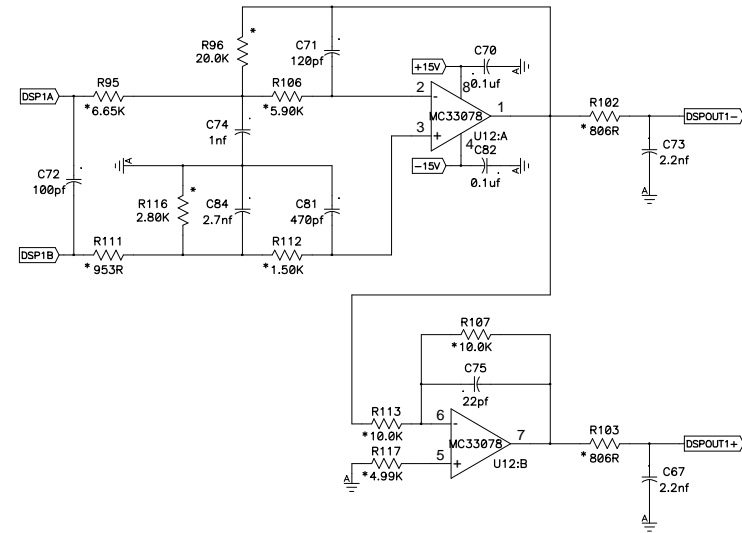
CH1 MODULATOR
FOR
FR1 AND FR2
P100 USED ON ALL MODELS FOR STABILITY.

UNCONTROLLED UNLESS OTHERWISE MARKED IN RED INK BY CM AS A CONTROLLED COPY. COPIES OF THESE DOCUMENTS INCLUDING ASSOCIATED ELECTRONIC REPRODUCTIONS ARE FOR REFERENCE ONLY.		THESE DRAWINGS AND SPECIFICATIONS ARE THE PROPERTY OF CROWN INTERNATIONAL, INC. AND SHALL NOT BE REPRODUCED, COPIED, OR USED AS THE BASIS FOR THE MANUFACTURE OR SALE OF APPARATUS OR DEVICES WITHOUT PERMISSION.		SIZE C	DWS NO. 138978-1	REV 3
SCALE NONE		PROJ NO. MRX500P		SHEET 2 OF 4		

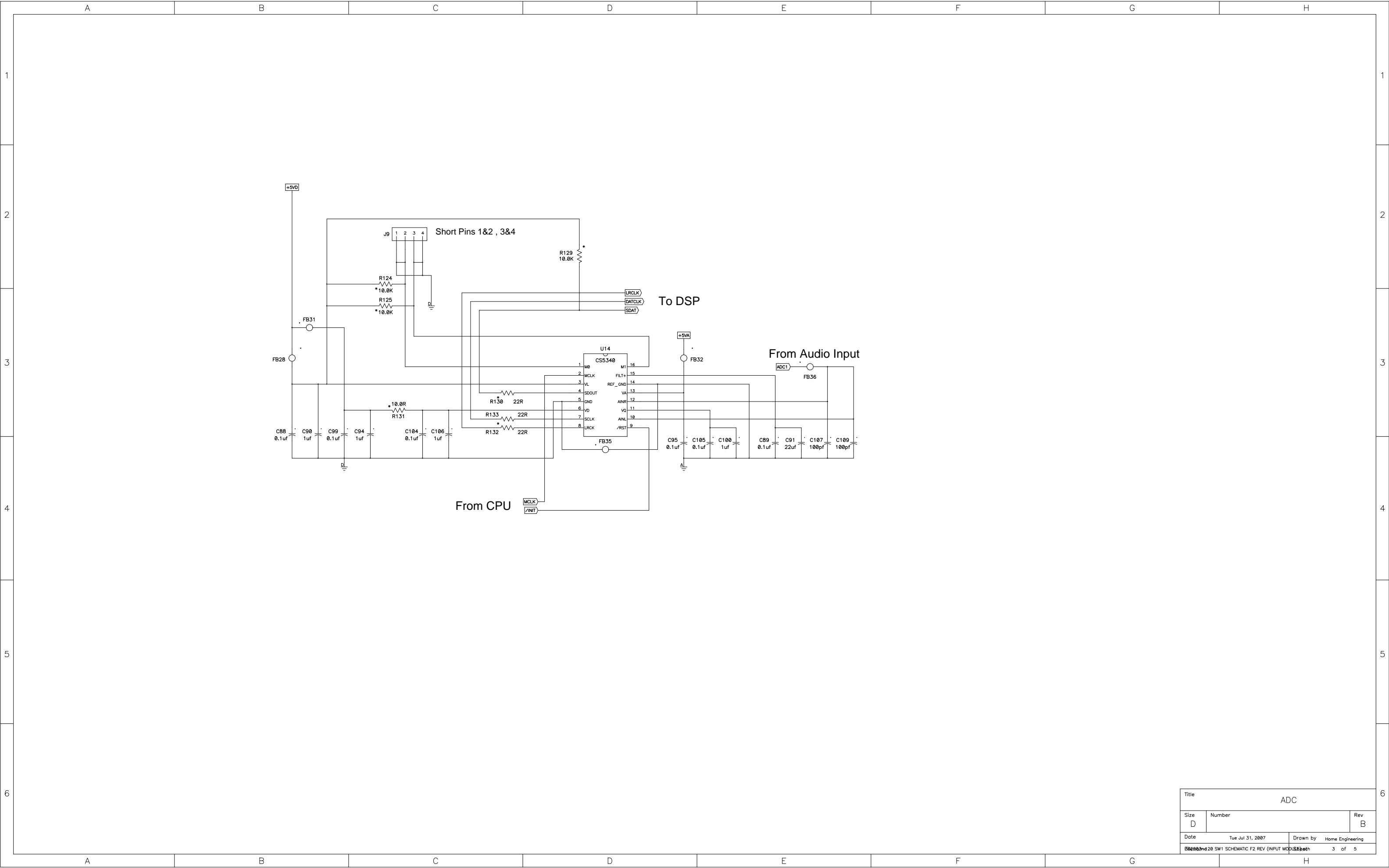


- NOTES:
1. ALL RESISTORS ARE IN OHMS. 1/16W, 1% UNLESS OTHERWISE SPECIFIED.
 2. ALL CAPACITORS ARE IN MICROFARADS UNLESS OTHERWISE SPECIFIED.

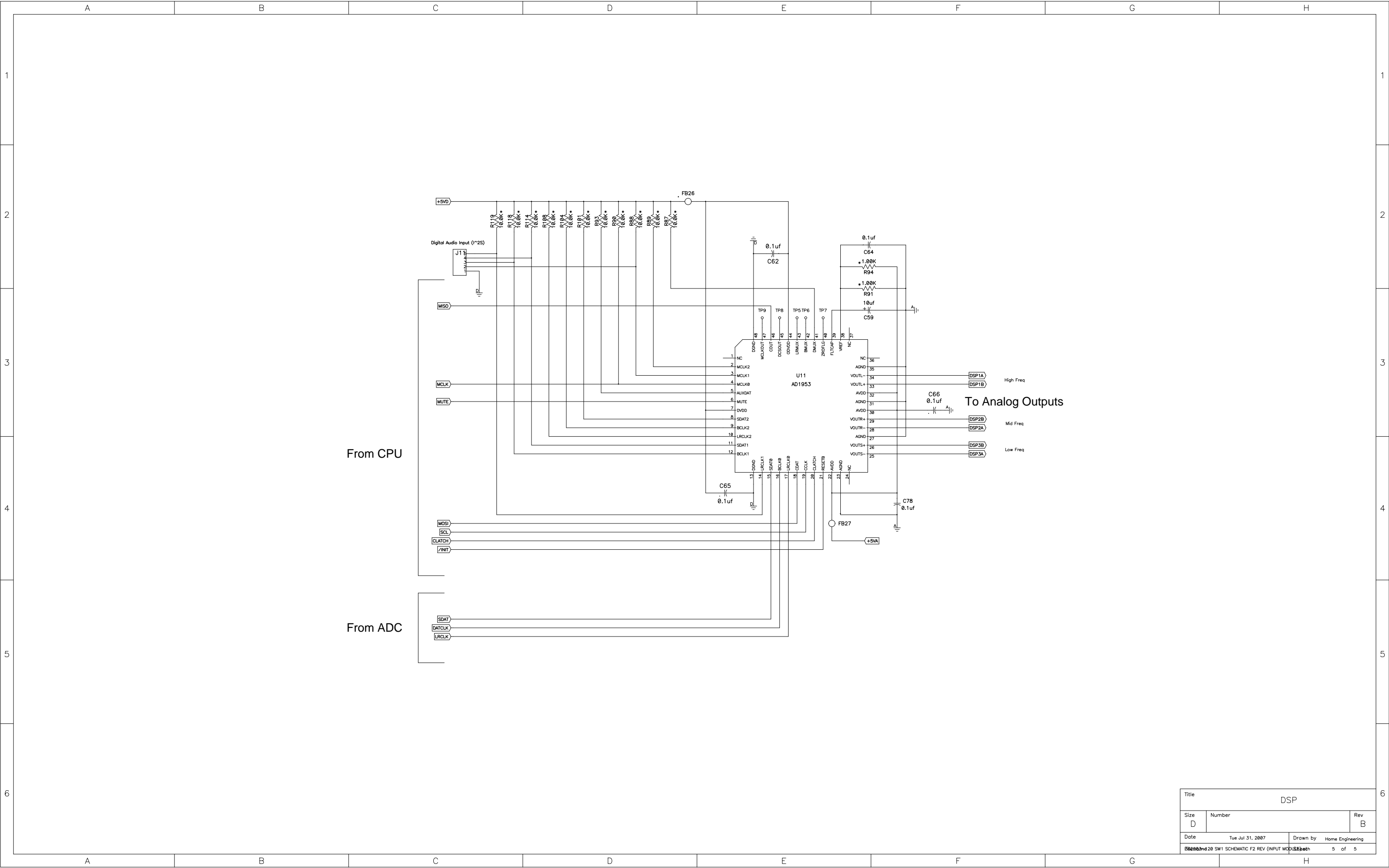




Title			
Analog Filters			
Size	Number		Rev
D			B
Date	Tue Jul 31, 2007	Drawn by	Home Engineering
F22001-220 SW1 SCHEMATIC F2 REV (INPUT MODULE)		2 of 5	



Title			ADC
Size	Number		Rev
D			B
Date	Tue Jul 31, 2007	Drawn by	Home Engineering
B00001-20 SW1 SCHEMATIC F2 REV (INPUT MOD)		3 of 5	



Title		DSP	
Size	Number		Rev
D			B
Date	Tue Jul 31, 2007	Drawn by	Home Engineering
B000020 SW1 SCHEMATIC F2 REV (INPUT MOD)		D. S. Beth	5 of 5