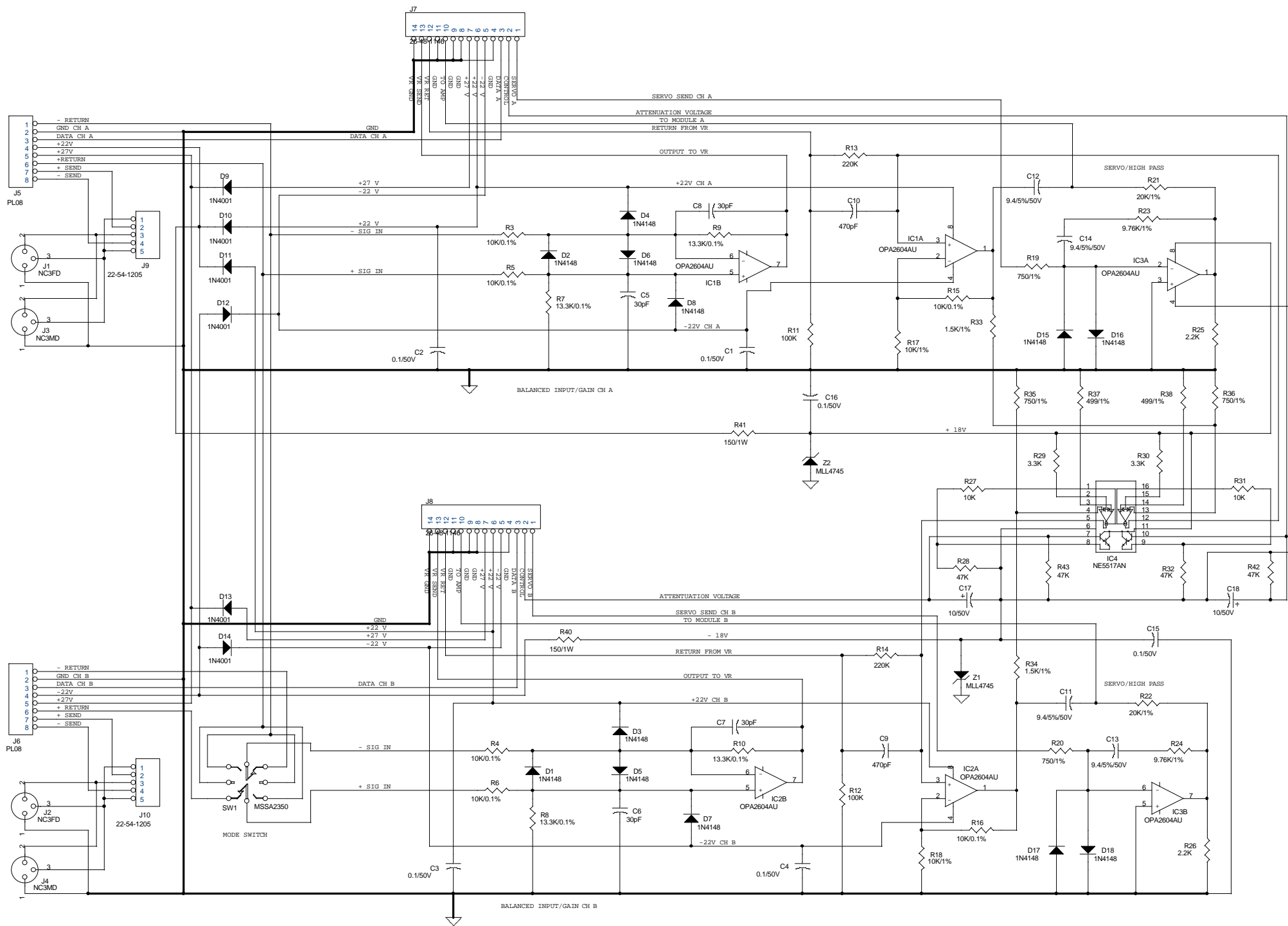
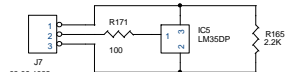


CREST AUDIO		
100 EISENHOWER DRIVE		
PARAMUS, NJ 07652		
Title		
1000X FAN DRIVER		
Size	Document Number	Rev
A	21A1749	
Date:	Tuesday, May 16, 2000	Sheet 0 of 0



R7 - R10, R21 - R24, C11 - C14



6

5

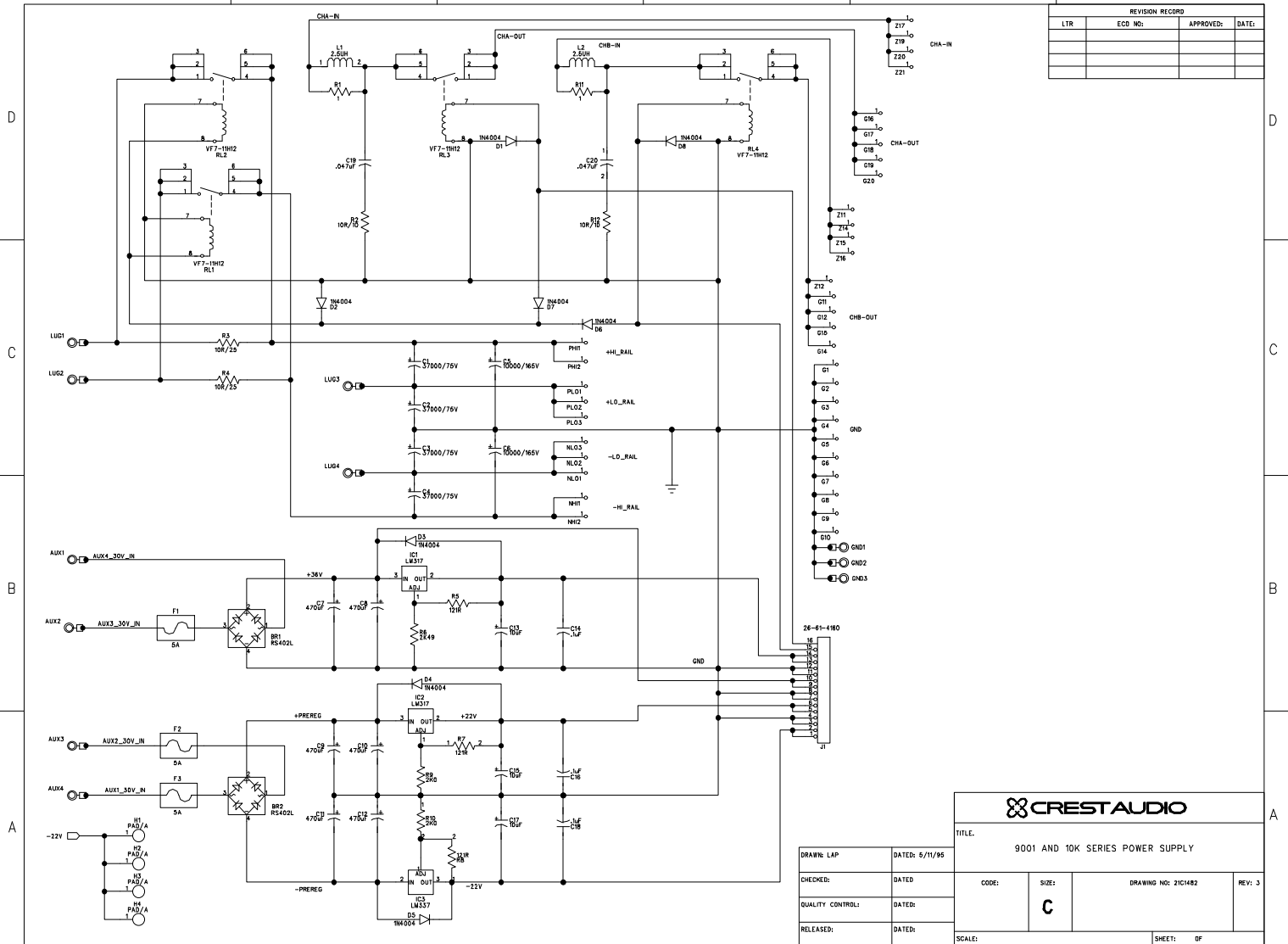
4

3

2

1

REVISION RECORD			
LTR	ECO NO.	APPROVED:	DATE:



**CREST AUDIO**

TITLE:

9001 AND 10K SERIES POWER SUPPLY

DRAWN LAY DATED: 9/11/95

CHECKED: DATED:

QUALITY CONTROL: DATED:

RELEASED: DATED:

CODE:

SIZE:

DRAWING NO: 21C1482

REV: 3

C

SCALE:

SHEET: 0F

6

5

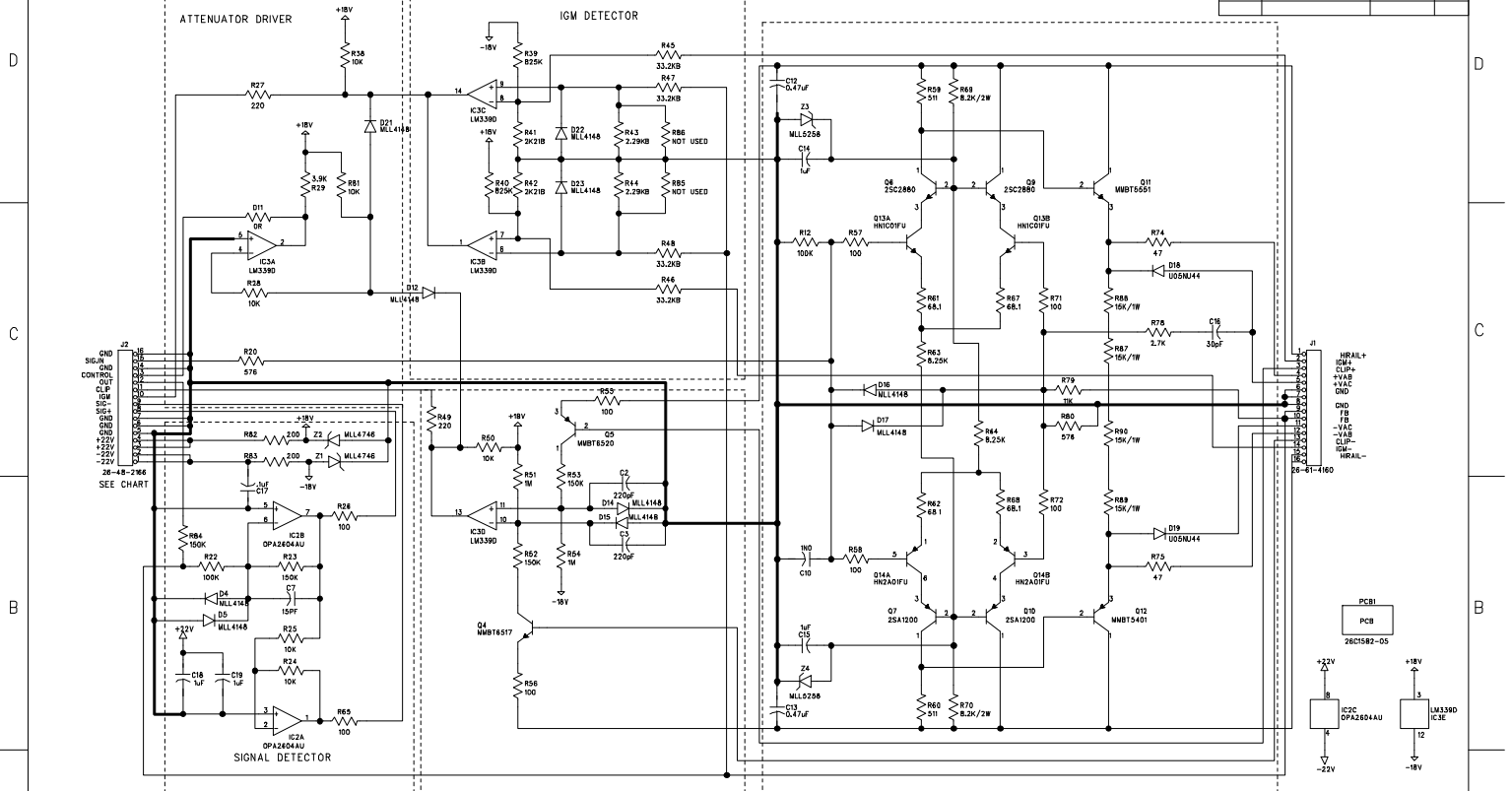
4

3

2


1

REVISION RECORD			
LTR	ECO NO.	APPROVED:	DATE:

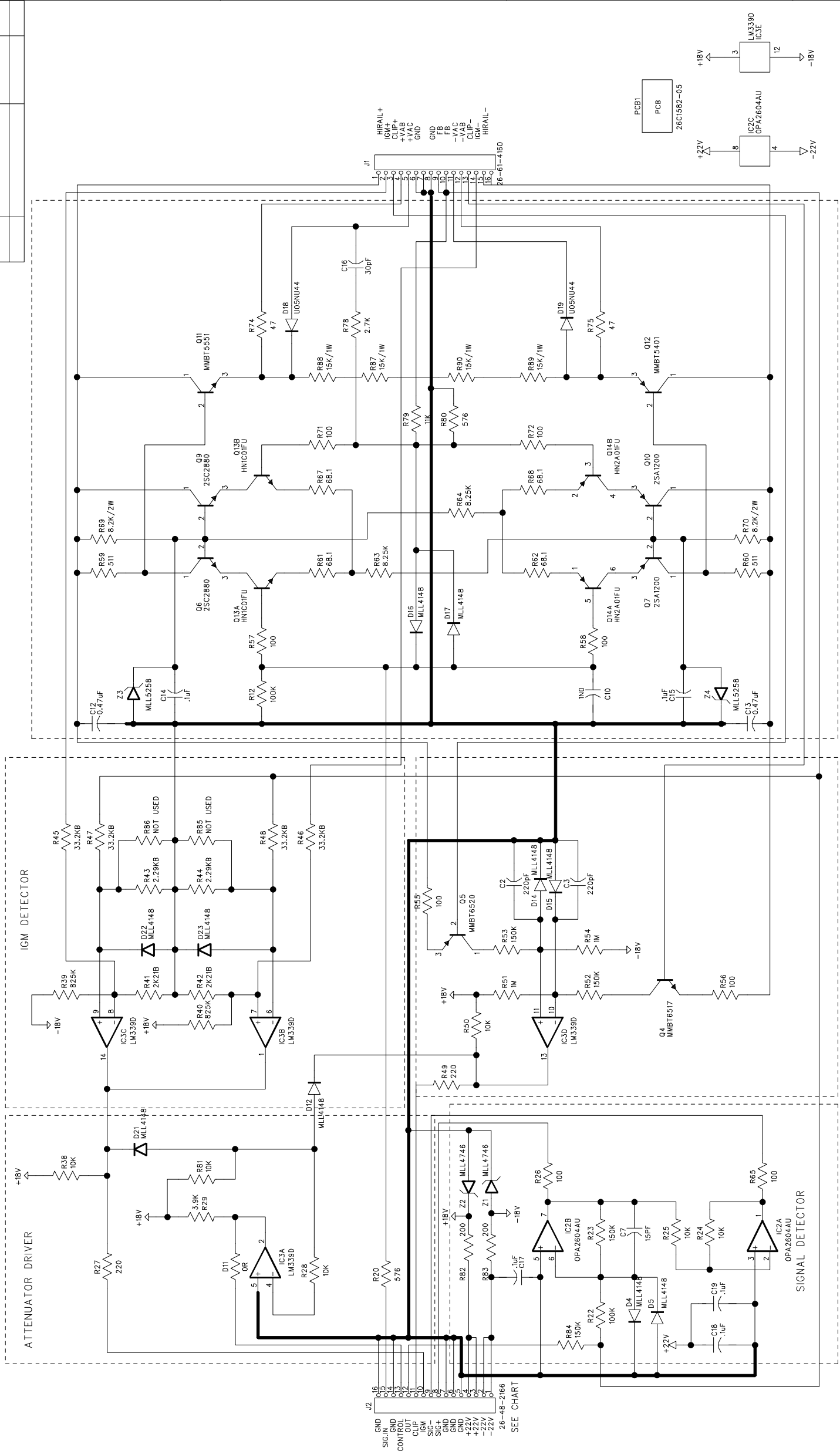


- NOTES
1. REF DES OF PARTS CHANGED FOR CLAIR BROTHERS  
R20 AND R80
  2. ADDED D11
  3. REPLACED D11 WITH 0 OHM JUMPER

DRAWN LAY	DATED: 1/96
CHECKED:	DATED:
QUALITY CONTROL:	DATED:
RELEASED:	DATED:

 CREST AUDIO			
TITLE: 10004 PREAMP			
CODE:	SIZE: C	DRAWING NO:	REV: 04
SCALE:		SHEET: 1 OF 1	

REVISION RECORD		
LTR	ECO NO:	APPROVED: DATE:



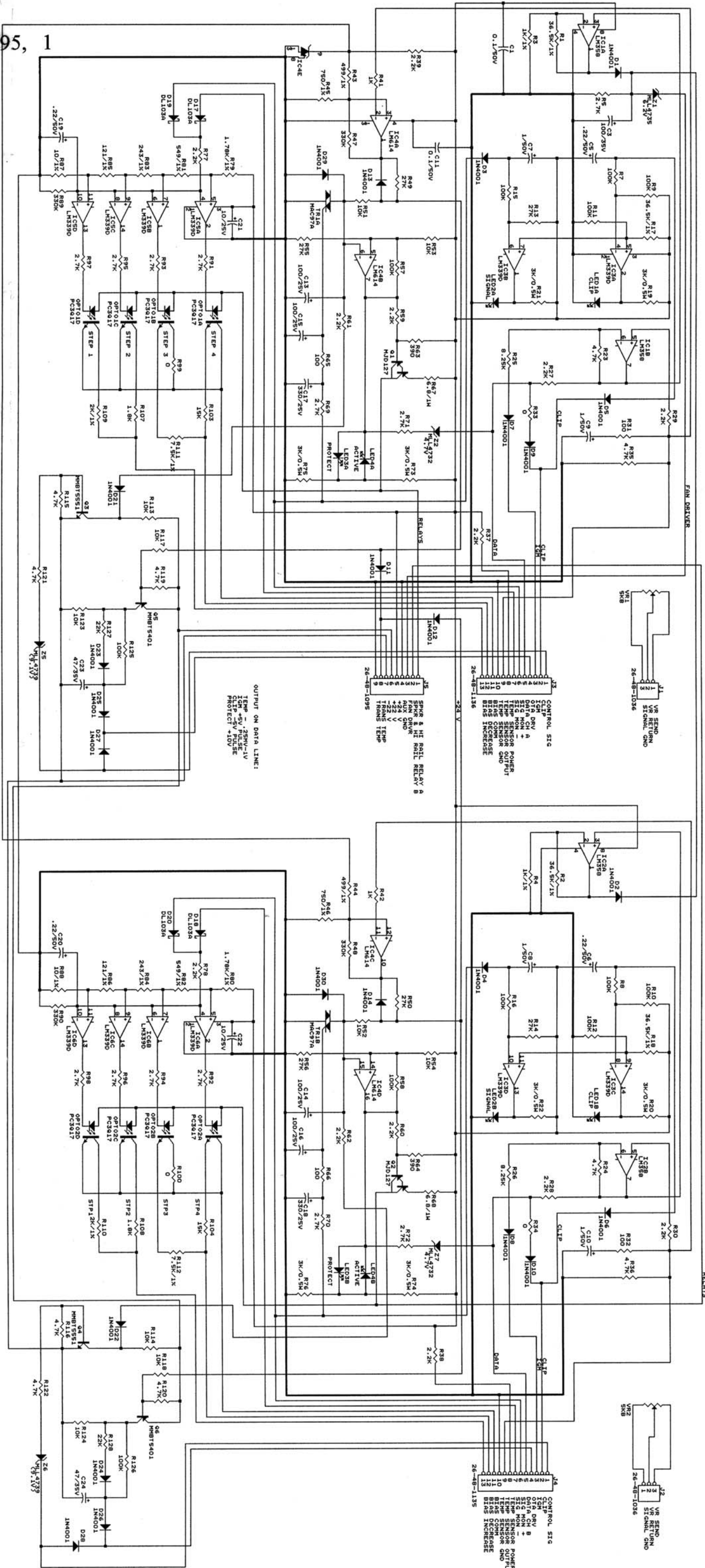
CREST AUDIO		
TITLE: 10004 PREAMP		
DRAWN: LAP	DATED: 1/96	
CHECKED:	DATED:	
QUALITY CONTROL:	DATED:	
RELEASED:	DATED:	
	CODE:	SIZE: C
	DRAWING NO:	REV: 04
SCALE: 1 OF 1		

NOTES

- REF DES OF PARTS CHANGED FOR CLAIR BROTHERS  
R20 AND R80
- ADDED D11
- REPLACED D11 WITH 0 OHM JUMPER



10004 display 5/95, 1



REV. 01

REV. 02

9001 ONLY

(1) R65, R66 ARE 2.7K

(2) R115, R116 ARE 470 OHM