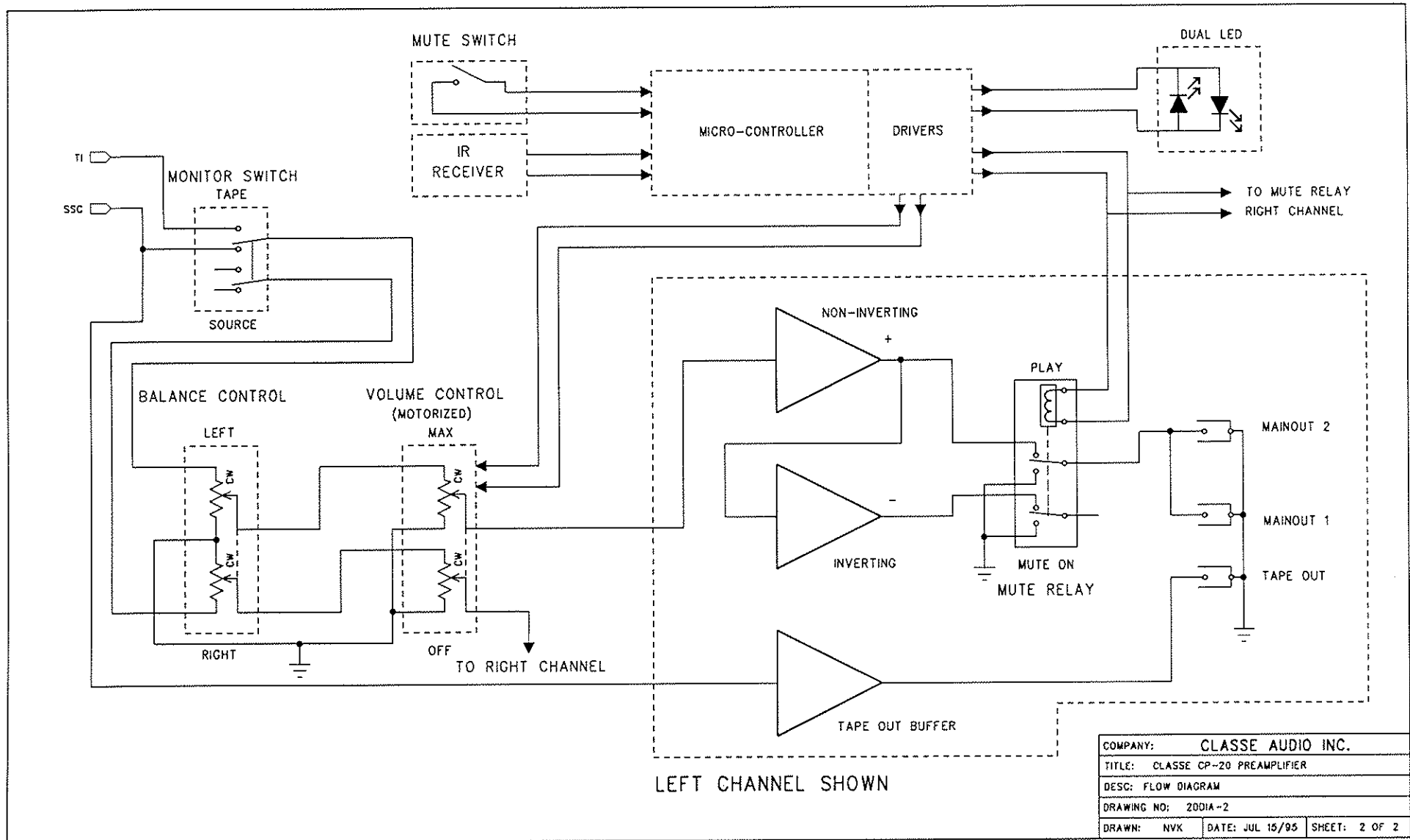
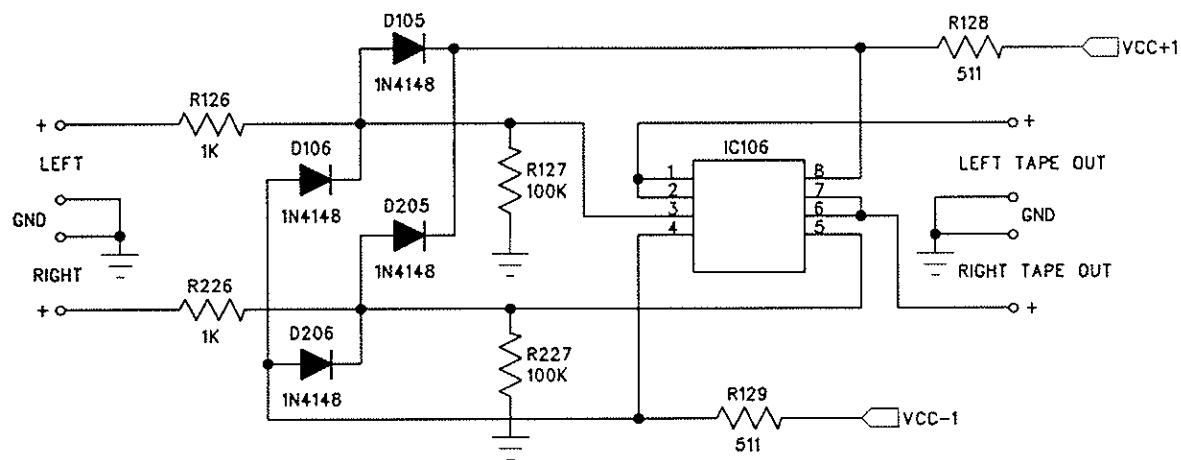


# SELECTOR SWITCH

NOTE: NON-SELECTED INPUTS ARE  
AUTOMATICALLY SHORTED TO GROUND.

COMPANY:	CLASSE AUDIO INC.		
TITLE:	CLASSE CP-20 PREAMPLIFIER		
DESC:	FLOW DIAGRAM		
DRAWING NO:	2001A-1		
DRAWN:	NVK	DATE: JUL 15/95	SHEET: 1 OF 2



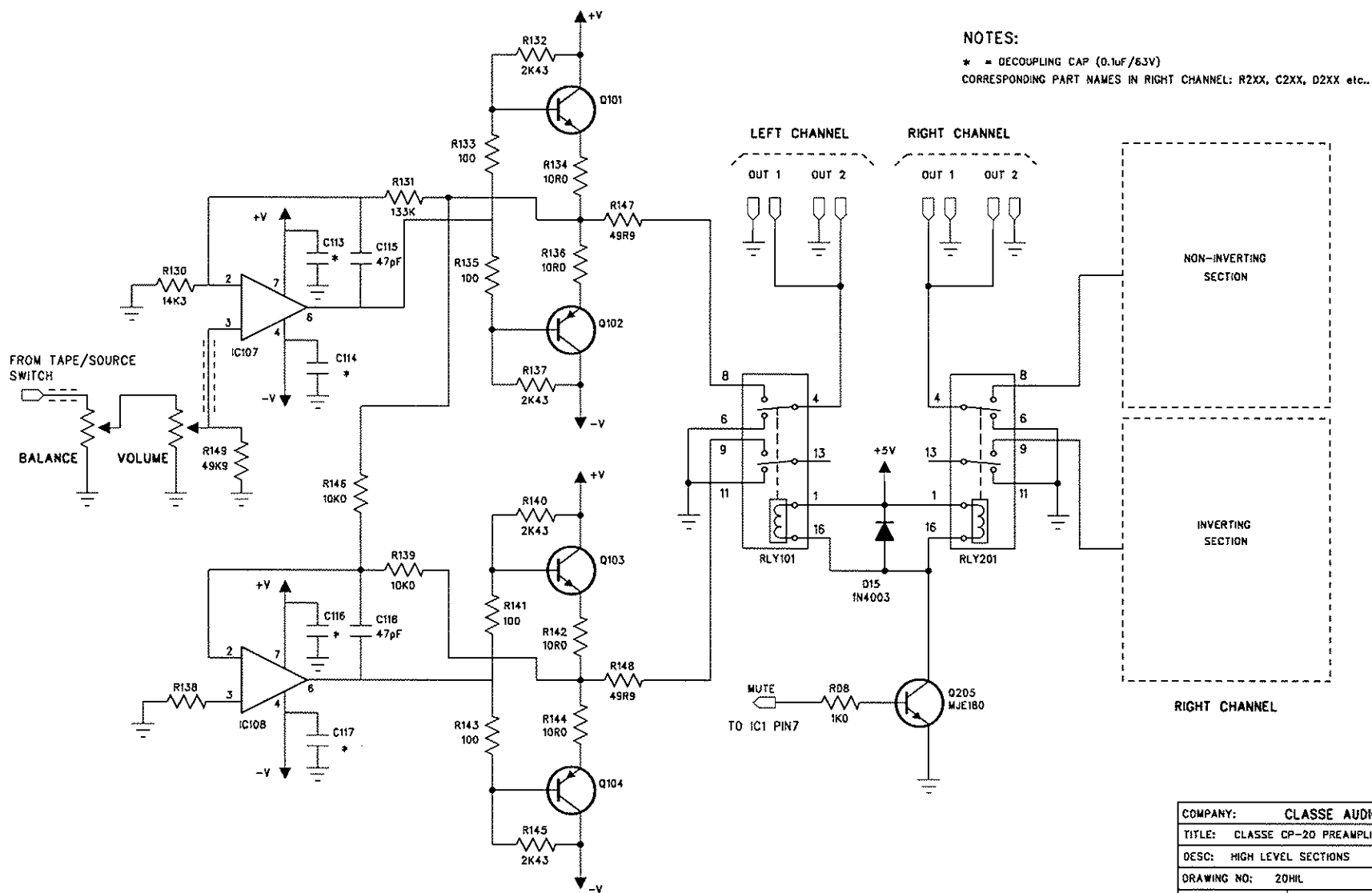


TAPE OUT BUFFER (BOTH CH.)

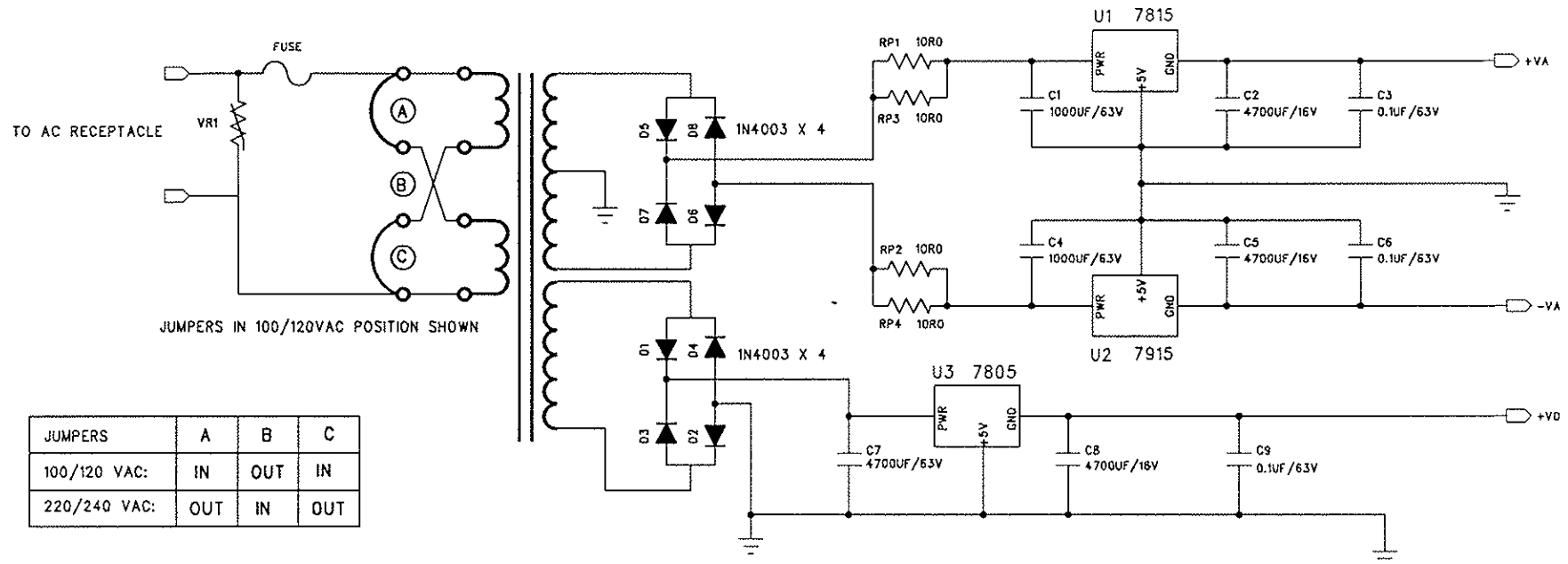
NOTES:

CORRESPONDING PART NAMES IN RIGHT CHANNEL: R2XX, C2XX, D2XX etc..

COMPANY: CLASSE AUDIO INC.		
TITLE: CLASSE CP-20 PREAMPLIFIER		
DESC: TAPE OUT BUFFER		
DRAWING NO: 20BUF		
DRAWN: NVK	DATE: JUL15/95	SHEET: 1 OF 4



COMPANY:	CLASSE AUDIO INC.		
TITLE:	CLASSE CP-20 PREAMPLIFIER		
DESC:	HIGH LEVEL SECTIONS		
DRAWING NO:	20HIL		
DRAWN:	NVK	DATE:	JUL 15/95
		SHEET:	2 OF 4



COMPANY:	CLASSE AUDIO INC.		
TITLE:	CLASSE CP-20 PREAMPLIFIER		
DESC:	POWER SUPPLY SECTION		
DRAWING NO:	40PSS		
DRAWN:	NVK	DATE: JUL 15/95	SHEET: 3 OF 4

