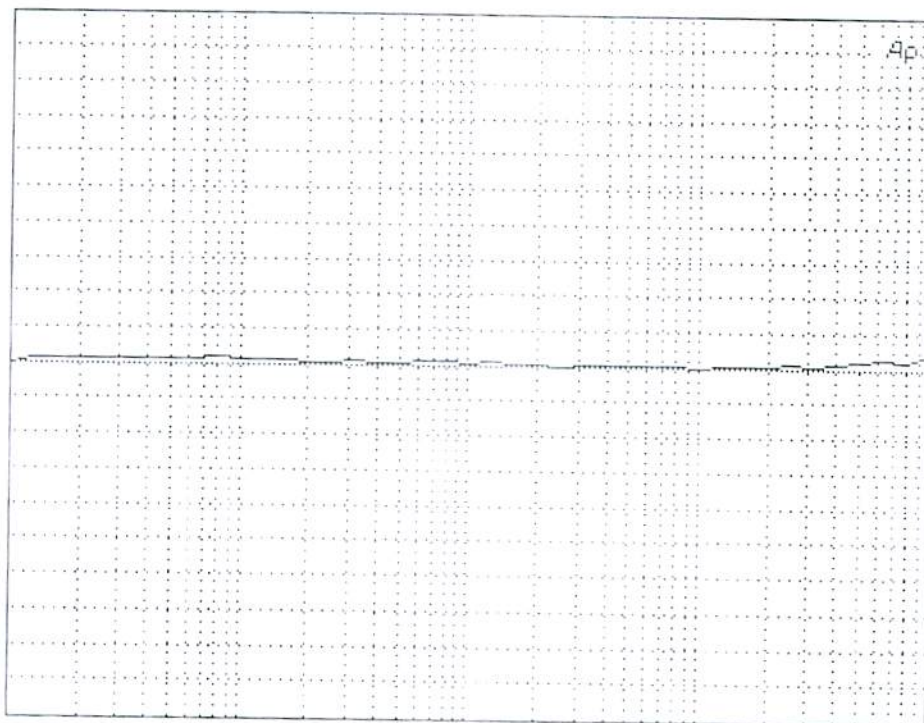


Signal
1V
0 dBr=30.02 mV
A:AMPL A
1.00 dBr

Att Ensat 1 m 30 dB

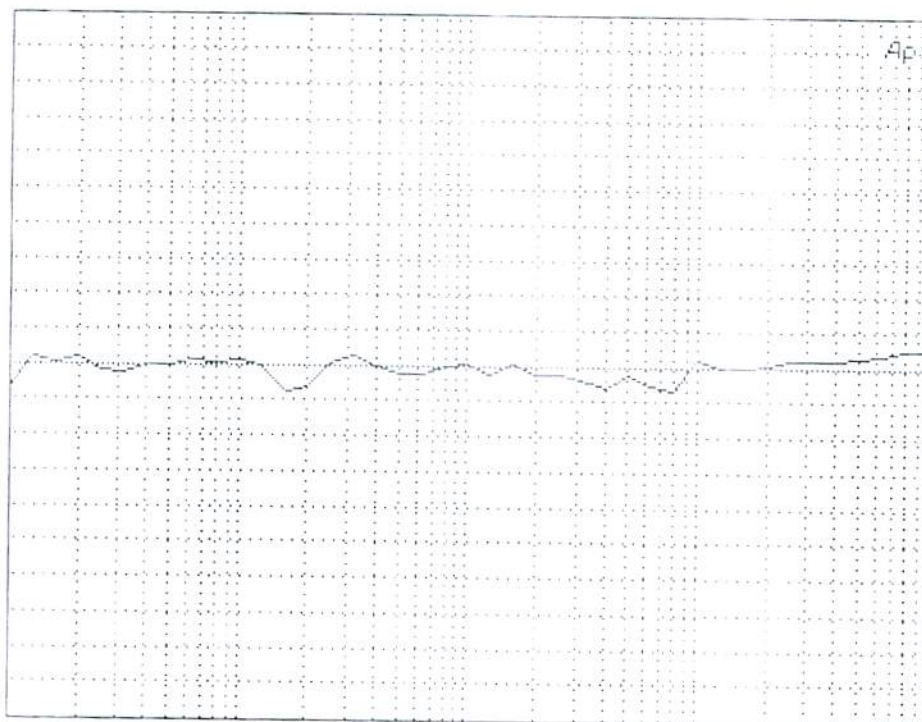
20091107 09:48



-1.00 dBr 10.000 Hz LOG A:FREQUENCY 100.00kHz
SETTINGS(UN-WTD <10 Hz - >300 kHz GEN:SINE 1.000 V)

Signal
1mV
(-6dB)
0 dBr=31.07 uV
A:AMPL A
1.00 dBr

20091107 09:51



-1.00 dBr 10.000 Hz LOG A:FREQUENCY 100.00kHz
SETTINGS(UN-WTD <10 Hz - >300 kHz GEN:SINE 1.000 mV)