

REV	DESCRIPTION	DATE
-NONE-	FIRST ITERATION DRAWING FOR PROTOTYPING PURPOSES ONLY. DO NOT USE FOR PRODUCTION WITHOUT CONFIRMING CURRENT REV LEVEL.	10/25/88

SCHEMATIC DETAIL DRAWING FROM BLOCK DIAGRAM

THIS IS DETAIL DRAWING FROM BLOCK DIAGRAM TITLED:	CAD FILENAME	DRAWING NUMBER
SA-3000 LINE STAGE BLOCK DIAGRAM	3KLINE	70393

NOTES:

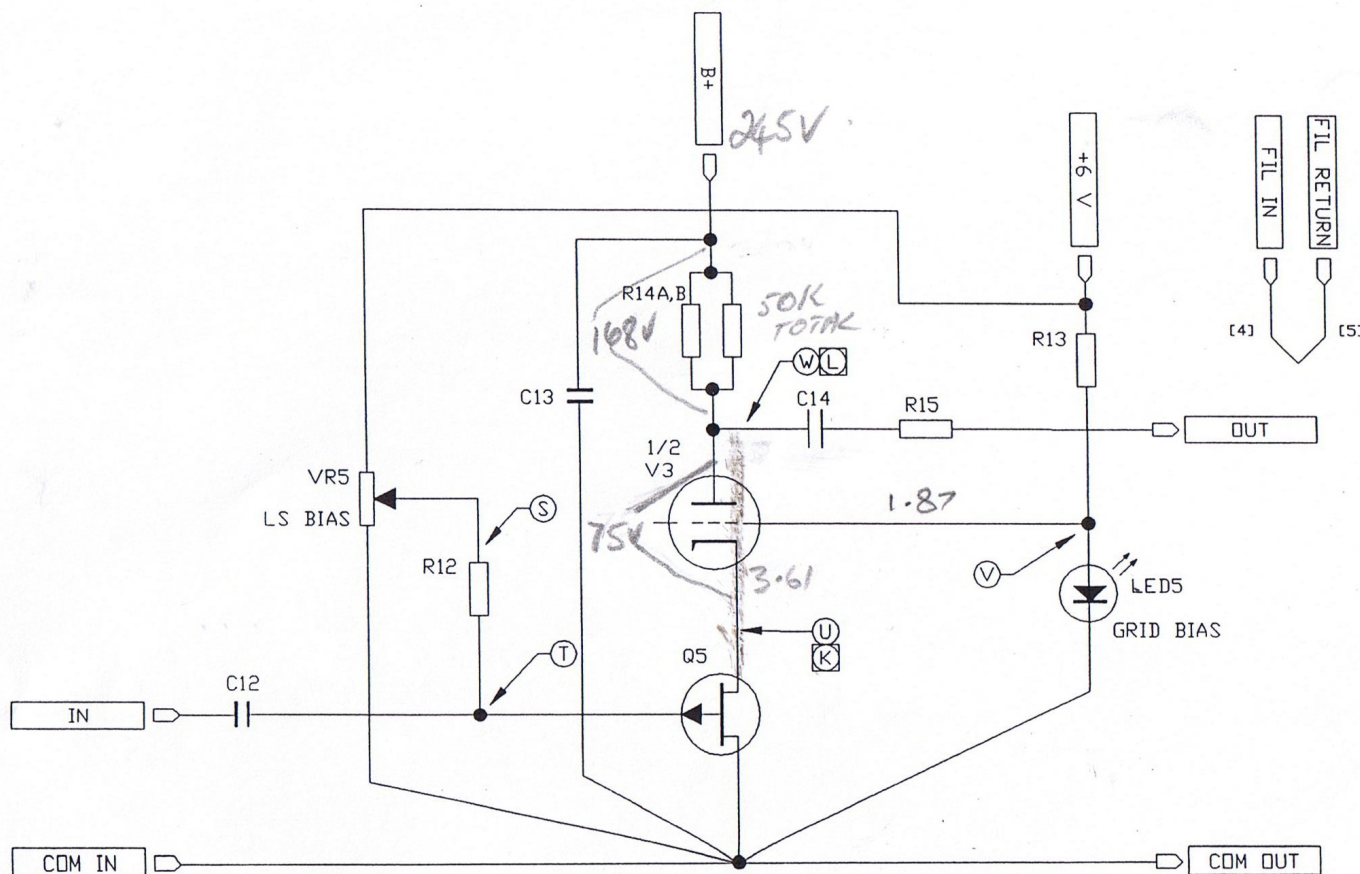
1. CHANNEL "A" SHOWN ONLY. "B" CHANNEL COMPONENTS RECEIVE "100-" PREFIX REFERENCE DESIGNATOR.
2. REFERENCED VOLTAGES (X) THROUGH (Y) REFER TO NORMAL DC OPERATING VOLTAGES AS SHOWN ON DRAWING NUMBER 703101 "DC OPERATING VOLTAGES, SA-3000 AUDIO CIRCUIT."
3. REFERENCED VOLTAGE (M) REFERS TO NORMAL SIGNAL LEVEL AS SHOWN ON DRAWING NUMBER 703401 "SIGNAL LEVELS, SA-3000 AUDIO CIRCUIT."
4. FOR DESCRIPTION OF CIRCUIT, REFER TO DRAWING NUMBER 703201 "CIRCUIT DESCRIPTION, SA-3000 AUDIO."

DRAWN	JME	REVISION
ON DATE 10/25/88	PRODUCT: SA-3000	

COUNTERPOINT	
LINE STAGE	
BUFFER SCHEMATIC	
CAD FILE: 3_BUFF	DWG: 703511

1. CHANNEL "A" SHOWN ONLY. "B" CHANNEL COMPONENTS RECEIVE "100-" PREFIX REFERENCE DESIGNATOR.
2. REFERENCED VOLTAGES (S) THROUGH (V) REFER TO NORMAL DC OPERATING VOLTAGES AS SHOWN ON DRAWING NUMBER 703101 "DC OPERATING VOLTAGES, SA-3000 AUDIO CIRCUIT."
3. REFERENCED VOLTAGES (K) THROUGH (L) REFER TO NORMAL SIGNAL LEVELS AS SHOWN ON DRAWING NUMBER 703401 "SIGNAL LEVELS, SA-3000 AUDIO CIRCUIT."
4. FOR DESCRIPTION OF CIRCUIT, REFER TO DRAWING NUMBER 703201 "CIRCUIT DESCRIPTION, SA-3000 AUDIO."

-NONE- FIRST ITERATION DRAWING FOR PROTOTYPING PURPOSES ONLY. DO NOT USE FOR PRODUCTION WITHOUT CONFIRMING CURRENT REV LEVEL. 10/25/88

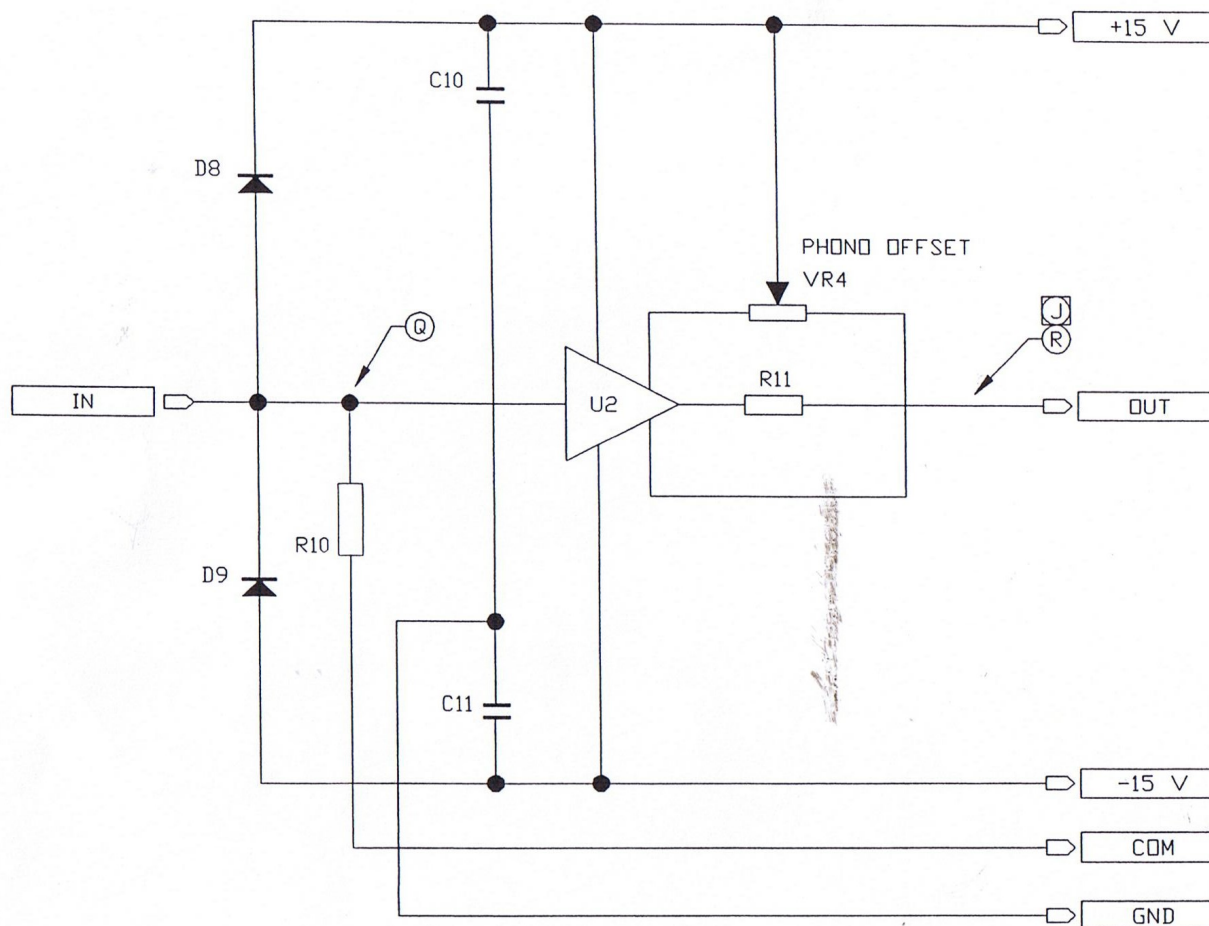


SCHEMATIC DETAIL DRAWING FROM BLOCK DIAGRAM		
THIS IS DETAIL DRAWING FROM BLOCK DIAGRAM TITLED:	CAD FILENAME	DRAWING NUMBER
SA-3000 LINE STAGE BLOCK DIAGRAM	3KLINE	70393

DRAWN	JME	REVISION
ON DATE 10/25/88		PRODUCT: SA-3000

COUNTERPOINT	
LINE GAIN STAGE	
SCHEMATIC	
CAD FILE: LS	DWG: 703510

REV	DESCRIPTION	DATE
-NONE-	FIRST ITERATION DRAWING FOR PROTOTYPING PURPOSES ONLY. DO NOT USE FOR PRODUCTION WITHOUT CONFIRMING CURRENT REV LEVEL.	10/25/88



SCHEMATIC DETAIL DRAWING FROM BLOCK DIAGRAM		
THIS IS DETAIL DRAWING FROM BLOCK DIAGRAM TITLED:	CAD FILENAME	DRAWING NUMBER
SA-3000 PHONO STAGE BLOCK DIAGRAM	3KPHONO	70392

NOTES:

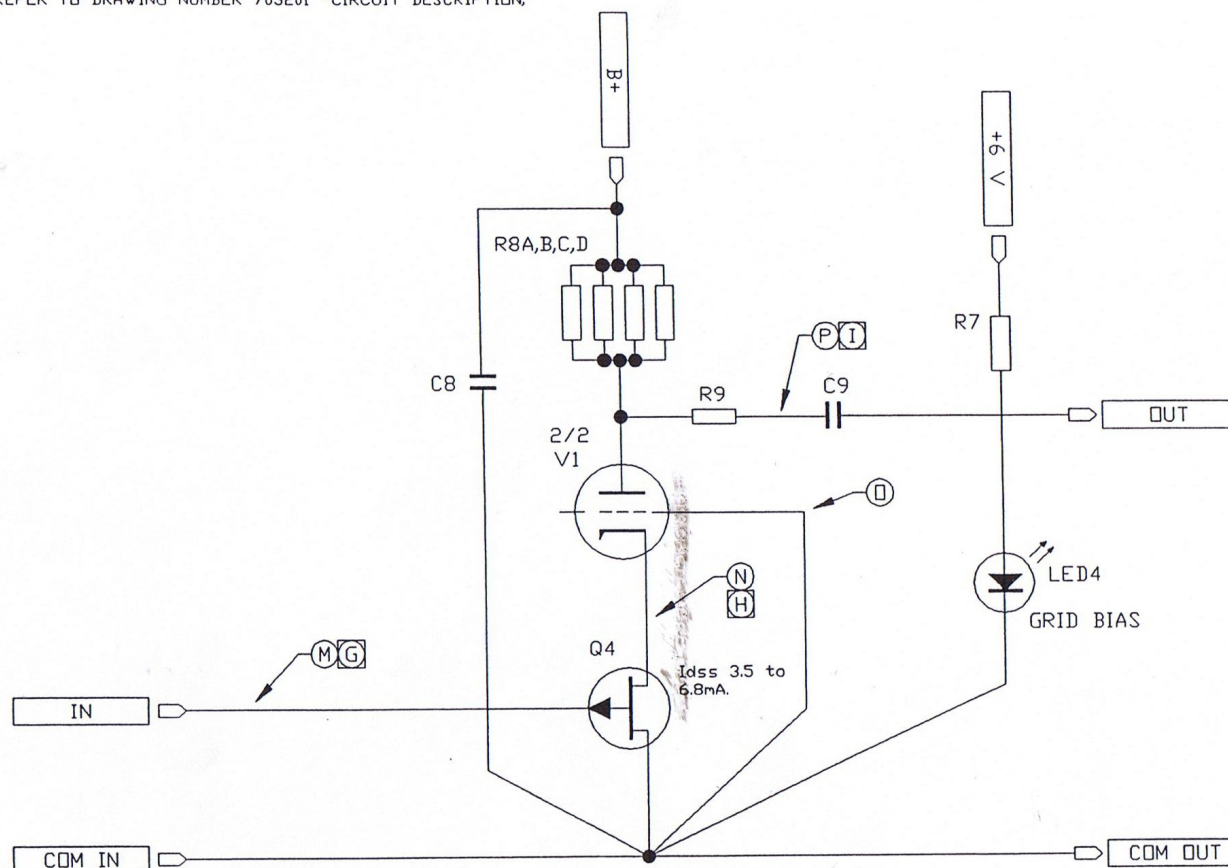
1. CHANNEL "A" SHOWN ONLY. "B" CHANNEL COMPONENTS RECEIVE "100-" PREFIX REFERENCE DESIGNATOR.
2. REFERENCED VOLTAGES ① THROUGH ⑧ REFER TO NORMAL DC OPERATING VOLTAGES AS SHOWN ON DRAWING NUMBER 703101 "DC OPERATING VOLTAGES, SA-3000 AUDIO CIRCUIT."
3. REFERENCED VOLTAGE ⑨ REFERS TO NORMAL SIGNAL LEVEL AS SHOWN ON DRAWING NUMBER 703401 "SIGNAL LEVELS, SA-3000 AUDIO CIRCUIT."
4. FOR DESCRIPTION OF CIRCUIT, REFER TO DRAWING NUMBER 703201 "CIRCUIT DESCRIPTION, SA-3000 AUDIO."

DRAWN	JME	REVISION
ON DATE 10/25/88	PRODUCT: SA-3000	
COUNTERPOINT		
PHONO SECOND STAGE BUFFER SCHEMATIC		
CAD FILE: 2 BUFF	DWG: 703509	

NOTES:

1. CHANNEL "A" SHOWN ONLY. "B" CHANNEL COMPONENTS RECEIVE "100-" PREFIX REFERENCE DESIGNATOR.
2. REFERENCED VOLTAGES (M) THROUGH (P) REFER TO NORMAL DC OPERATING VOLTAGES AS SHOWN ON DRAWING NUMBER 703101 "DC OPERATING VOLTAGES, SA-3000 AUDIO CIRCUIT."
3. REFERENCED VOLTAGES (G) THROUGH (I) REFER TO NORMAL SIGNAL LEVELS AS SHOWN ON DRAWING NUMBER 703401 "SIGNAL LEVELS, SA-3000 AUDIO CIRCUIT."
4. FOR DESCRIPTION OF CIRCUIT, REFER TO DRAWING NUMBER 703201 "CIRCUIT DESCRIPTION, SA-3000 AUDIO."

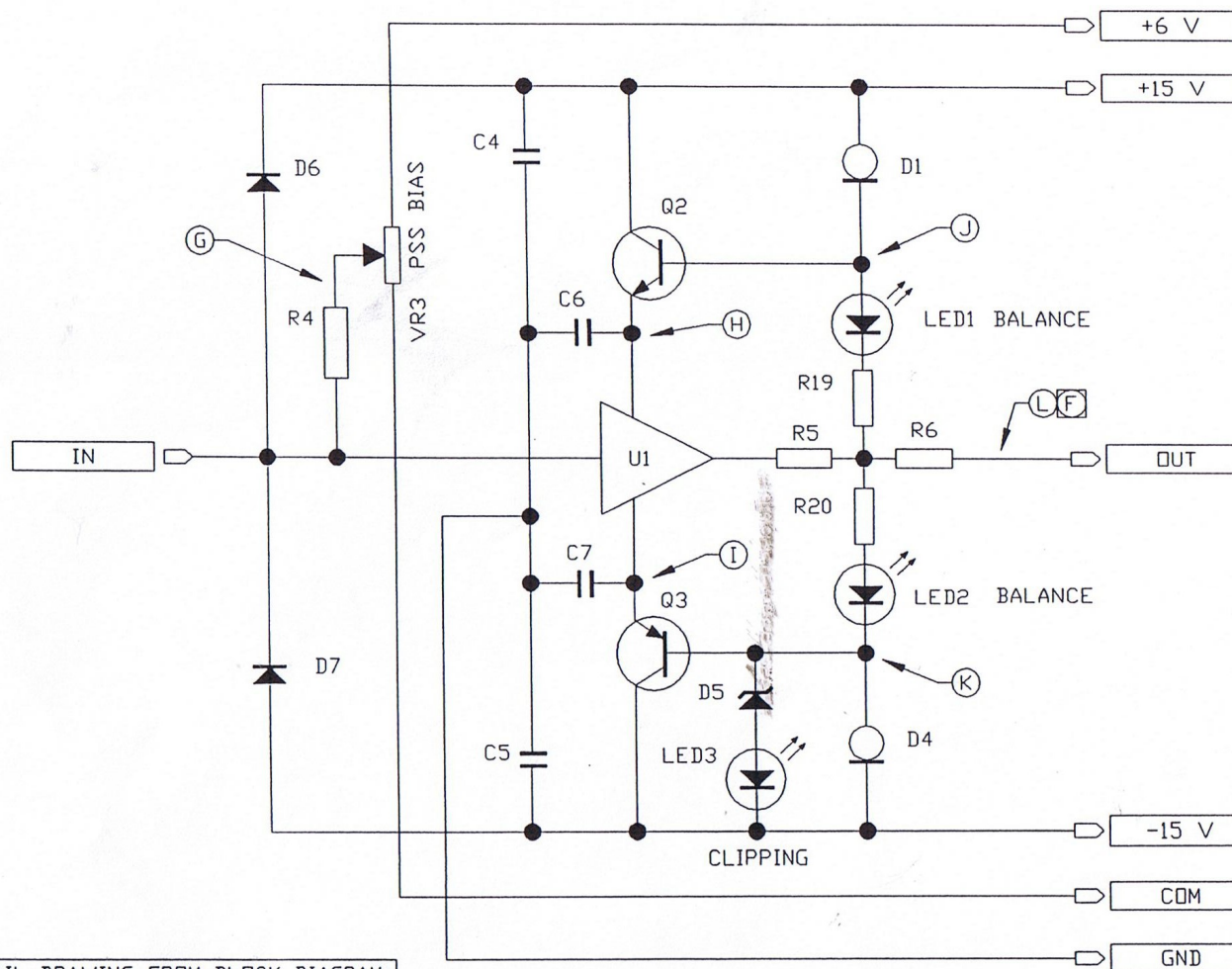
REV	DESCRIPTION	DATE
-NONE-	FIRST ITERATION DRAWING FOR PROTOTYPING PURPOSES ONLY. DO NOT USE FOR PRODUCTION WITHOUT CONFIRMING CURRENT REV LEVEL.	10/25/88
A	TUBE GRID GROUNDED PER ECD# 136, BROADENS ACCEPTABLE RANGE OF FET I_{dss} .	1/18/89



SCHEMATIC DETAIL DRAWING FROM BLOCK DIAGRAM		
THIS IS DETAIL DRAWING FROM BLOCK DIAGRAM TITLED:	CAD FILENAME	DRAWING NUMBER
SA-3000 PHONO STAGE BLOCK DIAGRAM	3KPHONO	70392

DRAWN	JME	REVISION
ON DATE 10/25/88	PRODUCT: SA-3000	
COUNTERPOINT		
PHONO SECOND GAIN STAGE SCHEMATIC		
CAD FILE: PSS	DWG: 703508	

REV	DESCRIPTION	DATE
-NONE-	FIRST ITERATION DRAWING FOR PROTOTYPING PURPOSES ONLY. DO NOT USE FOR PRODUCTION WITHOUT CONFIRMING CURRENT REV LEVEL.	10/25/88



SCHEMATIC DETAIL DRAWING FROM BLOCK DIAGRAM		
THIS IS DETAIL DRAWING FROM BLOCK DIAGRAM TITLED:	CAD FILENAME	DRAWING NUMBER
SA-3000 PHONO STAGE BLOCK DIAGRAM	3KPHONO	70392

NOTES:

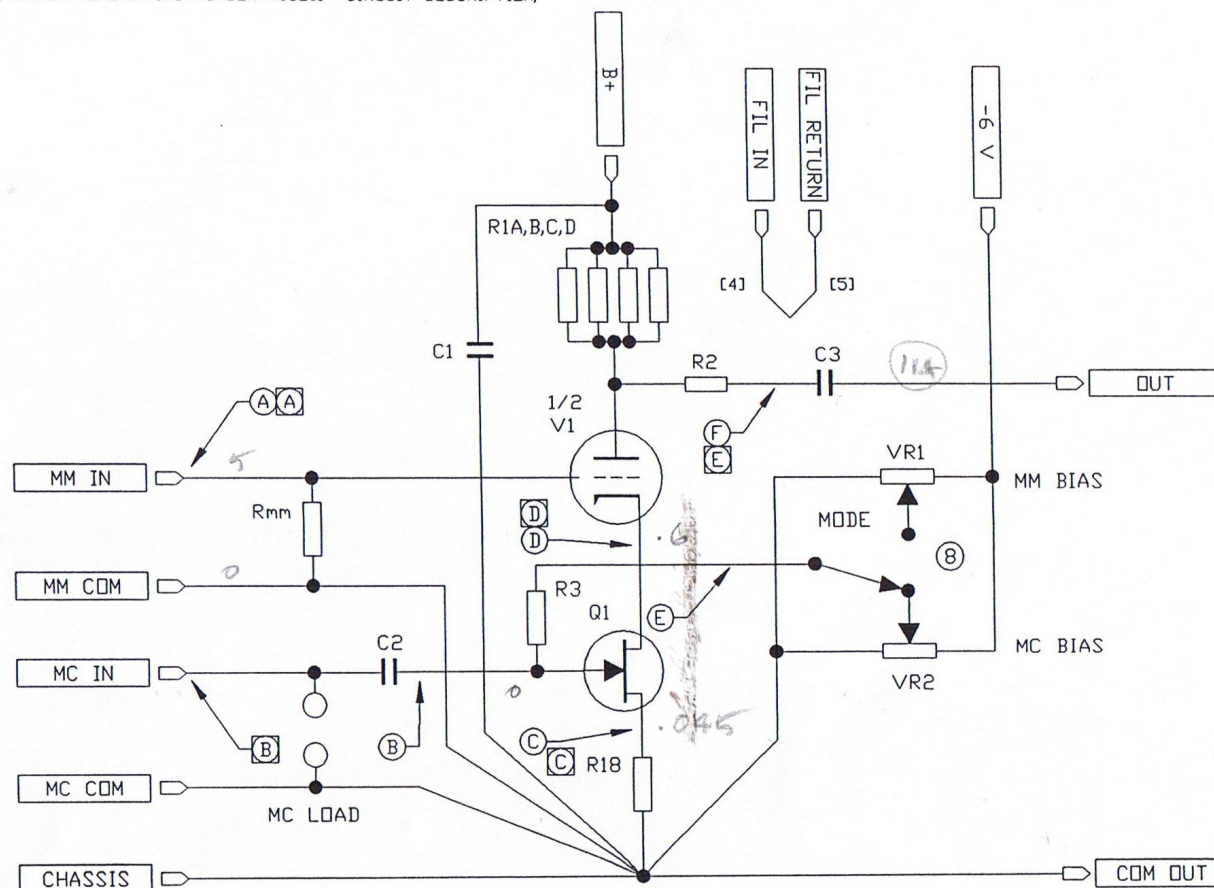
1. CHANNEL "A" SHOWN ONLY. "B" CHANNEL COMPONENTS RECEIVE "100-" PREFIX REFERENCE DESIGNATOR.
2. REFERENCED VOLTAGES (G) THROUGH (L) REFER TO NORMAL DC OPERATING VOLTAGES AS SHOWN ON DRAWING NUMBER 703101 "DC OPERATING VOLTAGES, SA-3000 AUDIO CIRCUIT."
3. REFERENCED VOLTAGE (F) REFERS TO NORMAL SIGNAL LEVELS AS SHOWN ON DRAWING NUMBER 703401 "SIGNAL LEVELS, SA-3000 AUDIO CIRCUIT."
4. FOR DESCRIPTION OF CIRCUIT, REFER TO DRAWING NUMBER 703201 "CIRCUIT DESCRIPTION, SA-3000 AUDIO."

DRAWN	JME	REVISION
ON DATE 10/25/88	PRODUCT: SA-3000	
COUNTERPOINT		
PHONO FIRST STAGE BUFFER SCHEMATIC		
CAD FILE: 1 BUFF	DWG: 703507	

NOTES:

- CHANNEL "A" SHOWN ONLY. "B" CHANNEL COMPONENTS RECEIVE "100-" PREFIX
- REFERENCE DESIGNATOR. REFERENCED VOLTAGES (A) THROUGH (F) REFER TO NORMAL DC OPERATING VOLTAGES AS SHOWN ON DRAWING NUMBER 703101 "DC OPERATING VOLTAGES, SA-3000 AUDIO CIRCUIT."
- REFERENCED VOLTAGES (A) THROUGH (E) REFER TO NORMAL SIGNAL LEVELS AS SHOWN ON DRAWING NUMBER 703401 "SIGNAL LEVELS, SA-3000 AUDIO CIRCUIT."
- FOR DESCRIPTION OF CIRCUIT, REFER TO DRAWING NUMBER 703201 "CIRCUIT DESCRIPTION, SA-3000 AUDIO."

REV	DESCRIPTION	DATE
-NONE-	FIRST ITERATION DRAWING FOR PROTOTYPING PURPOSES ONLY. DO NOT USE FOR PRODUCTION WITHOUT CONFIRMING CURRENT REV LEVEL.	10/25/88



CONTROL FUNCTIONS

REF.	DESCRIPTION	AS SHOWN	TYPE	CPTP/N	SPECIFICATION
B	MC/MM BIAS	MC BIAS	SPDT TOGGLE	SW-SPDT-BRAK	NONE

SCHEMATIC DETAIL DRAWING FROM BLOCK DIAGRAM		
THIS IS DETAIL DRAWING FROM BLOCK DIAGRAM TITLED:	CAD FILENAME	DRAWING NUMBER
SA-3000 PHONO STAGE BLOCK DIAGRAM	3KPHONO	70392

DRAWN	JME	REVISION
ON DATE	10/25/88	PRODUCT: SA-3000

COUNTERPOINT	
PHONO FIRST GAIN STAGE SCHEMATIC	
CAD FILE: PFS	DWG: 703506