

- High quality and cost effectiveness
- Small and compact PCB construction
- Autoranging voltage
(AC85~132V/AC170~264V)
- UL, recognized, TÜV approved, CSA certified
- Built-in inrush current, overcurrent and overvoltage protection circuits

ORDERING INFORMATION

LDA150 **-5-**

Optional: EX. With chassis and cover: SN
With voltage adjuster: Y

Output voltage

(W: Autoranging input

B: Only for 200V input)

Output wattage

Series name

SPECIFICATIONS

	MODEL	LDA150W-3 LDA150B-3	LDA150W-5 LDA150B-5	LDA150W-9 LDA150B-9	LDA150W-12 LDA150B-12	LDA150W-15 LDA150B-15	LDA150W-18 LDA150B-18	LDA150W-24 LDA150B-24	LDA150W-24-H	LDA150W-30 LDA150B-30	LDA150W-48 LDA150B-48	
INPUT	VOLTAGE/CURRENT	AC85~132V/170~264V 1ϕ / 3.6A typ (ACIN 100V, lo=100%) 2.0A typ (ACIN 200V, lo=100%)										
	FREQUENCY	47~440Hz										
	EFFICIENCY	75%typ	79%typ	79%typ	82%typ	83%typ	84%typ	85%typ	85%typ	85%typ	82%typ	
	INRUSH CURRENT	30A typ (ACIN 100/200V, lo=100%) (At cold start)										
	LEAKAGE CURRENT	0.75mA max (60Hz, according to UL, CSA, VDE and DENTORI)										
OUTPUT	VOLTAGE [V]	3	5	9	12	15	18	24	24	30	48	
	CURRENT [A]※1	30	30	17	12.5	10	8.5	6.3	6.3 (10)	5	3	
	LINE REGULATION [mV]	20 max	20 max	36 max	48 max	60 max	72 max	96 max	96 max	120 max	192 max	
	LOAD REGULATION [mV]	40 max	40 max	100 max	100 max	120 max	120 max	150 max	150 max	180 max	240 max	
	RIPPLE [mVp-p]	0~+50℃	80 max	80 max	120 max	120 max	120 max	120 max	120 max	220 max	120 max	150 max
		−10-0℃	140 max	140 max	160 max	160 max	160 max	160 max	160 max	260 max	160 max	200 max
	RIPPLE NOISE [mVp-p]	0~+50℃	120 max	120 max	150 max	150 max	150 max	150 max	150 max	250 max	150 max	400 max
		−10-0℃	160 max	160 max	180 max	180 max	180 max	180 max	180 max	280 max	180 max	600 max
	TEMPERATURE COEFFICIENT [mV]	60 max	60 max	120 max	150 max	180 max	200 max	290 max	290 max	360 max	560 max	
	DRIFT [mV]※2	20 max	20 max	36 max	48 max	60 max	72 max	96 max	96 max	120 max	192 max	
	START-UP TIME [mS]	200max (ACIN 100V, lo =100%)										
HOLD-UP TIME [mS]	10typ (ACIN 85V, lo=100%) , 20 typ (ACIN 100V, lo =100%)											
OUTPUT VOLTAGE ADJUSTMENT RANGE [V]※3	2.85~3.6	4.5~5.5	Fixed									
PROTECTION CIRCUITS	OVERCURRENT PROTECTION	Works over 105% of rating (−H:peak) and recovers automatically										
	OVERVOLTAGE PROTECTION	4.00~5.25V	Works at 115% ~140% of rating									
ISOLATION	INPUT-OUTPUT	AC3,000V, 1minute, Cutoff current= 10mA, DC500V, 50MΩ min. (At Room Temperature)										
	INPUT-FG	AC2,000V, 1minute, Cutoff current= 10mA, DC500V, 50MΩ min. (At Room Temperature)										
	OUTPUT-FG	AC 500V, 1minute, Cutoff current=100mA, DC500V, 50MΩ min. (At Room Temperature)										
ENVIRONMENT	OPERATING TEMP. AND HUMID.	−10~+60℃, 20~90%RH (Non condensing) (Refer to DERATING CURVE)										
	STORAGE TEMP. AND HUMID.	−20~+75℃, 20~90%RH (Non condensing)										
	VIBRATION	10~55Hz, 2G, 3 minutes period, 60 minutes each along X, Y and Z axis										
	IMPACT	20G, 11mS, once each X, Y and Z axis										
SAFETY AND NOISE REGULATIONS	SAFETY	Recognized UL1950, approved EN60950, VDE0160, certified CSA C22.2 No.234,complies with DENTORI and IEC950										
	CONDUCTED NOISE	Complies with FCC−B, Vfa243/91 and VCCI 2										

※1 Peak load can be operated when the total wattage is within rated wattage(24V:151.2W)and less than 10 seconds(within the rated current for the average current).

※2 The drift is a change at 25°C of ambient temperature and 30 minutes~8 hours after the input voltage applied at rated input/output.

※3 "Y" which can be adjusted the output is available as optional.

※ Avoid prolonged use under over-load.

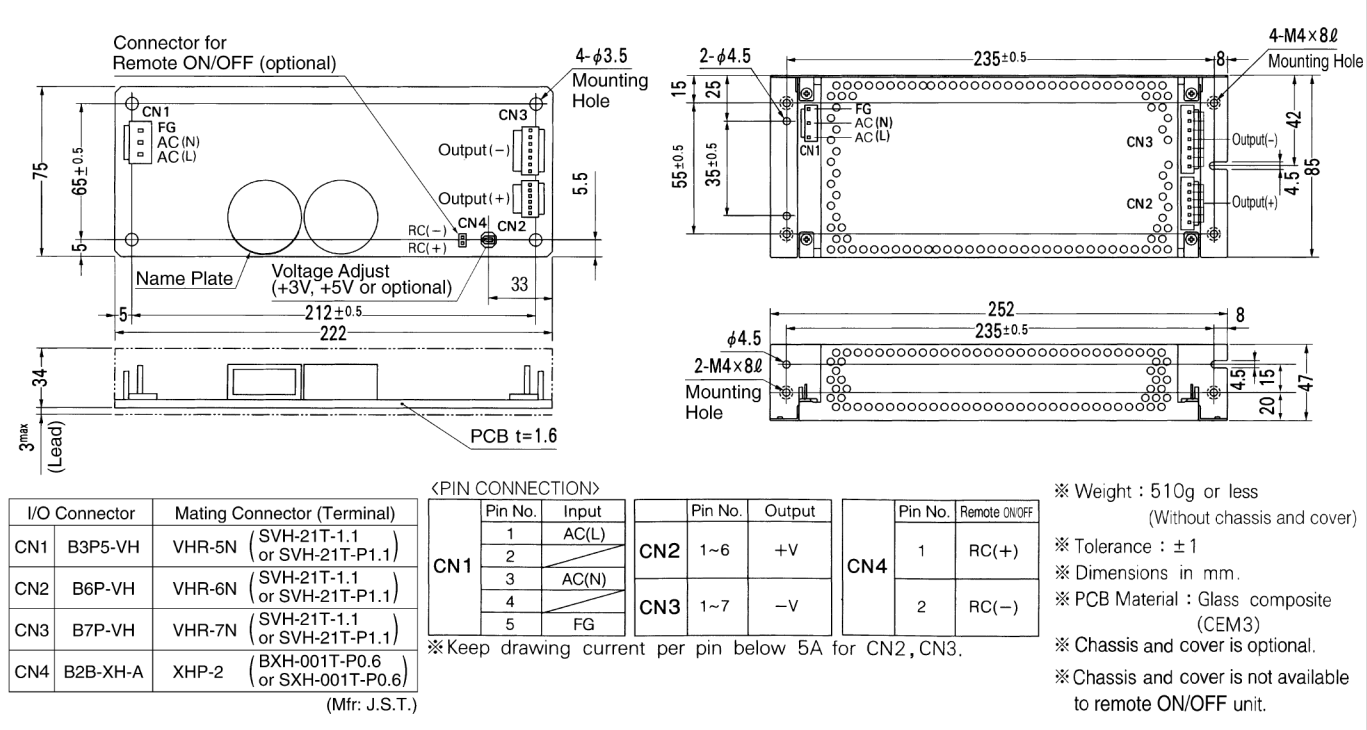
※ Parallel operation with other model is not possible.

※ When units are operated with chassis/case cover, derating is required.

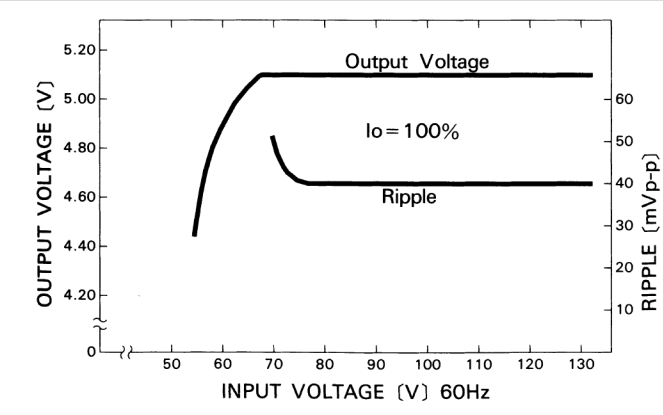
MODEL	LDA150W-3	LDA150W-5	LDA150W-9	LDA150W-12	LDA150W-15	LDA150W-18	LDA150W-24	LDA150W-24-H	LDA150W-30	LDA150W-48
MAX OUTPUT WATTAGE	90W	150W	153W	150W	150W	153W	151.2W	151.2W	150W	144W
DC OUTPUT	3V30A	5V30A	9V17A	12V12.5A	15V10A	18V8.5A	24V6.3A	24V6.3/10A	30V5A	48V3A

() Peak

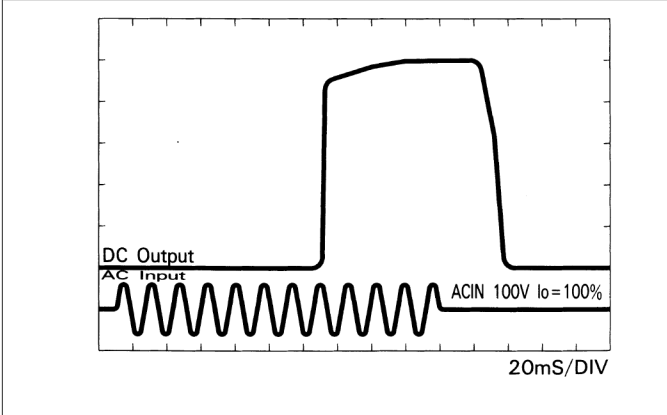
EXTERNAL VIEW



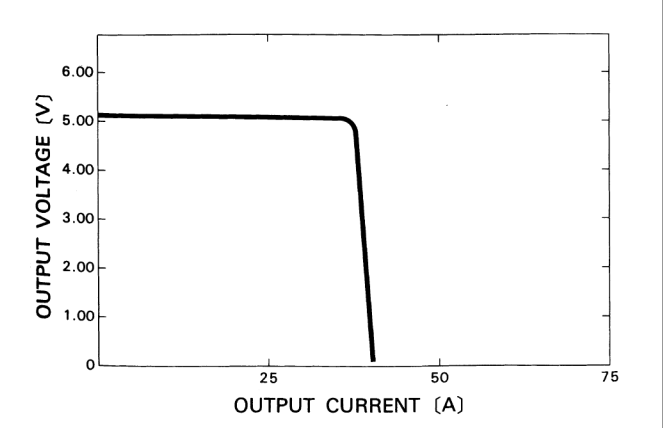
STATIC CHARACTERISTICS (LDA150W-5)



RISE TIME & FALL TIME (LDA150W-5)



OVERCURRENT CHARACTERISTICS (LDA150W-5)



DERATING CURVE

