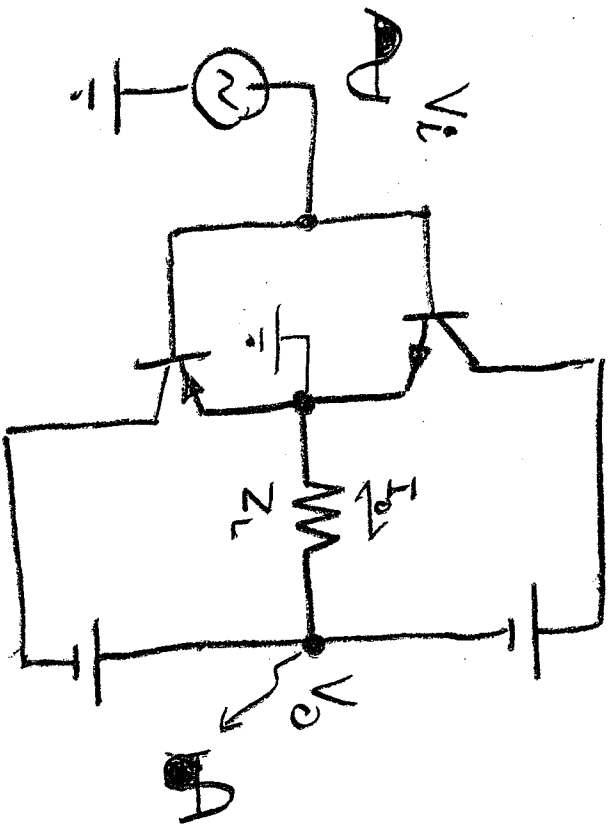
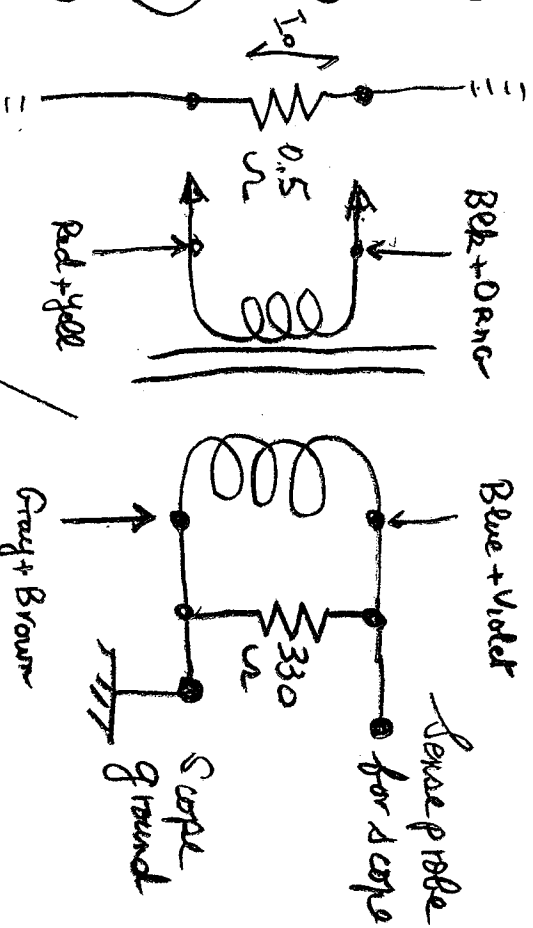


Fig. 1
Simplified schematic of a bit
Transconductance Power Amp.



- Inverts phase of input signal
 - Output Impedance $Z_o = Z_L$
- ▲ What is the value of its Intrinsic Output impedance \equiv About Z_L ?

Fig. 2
A differential Voltage generator
using a step-up toroid Power
Transformer



TR1AD VPT 24-1040

Antennae

8/22/12