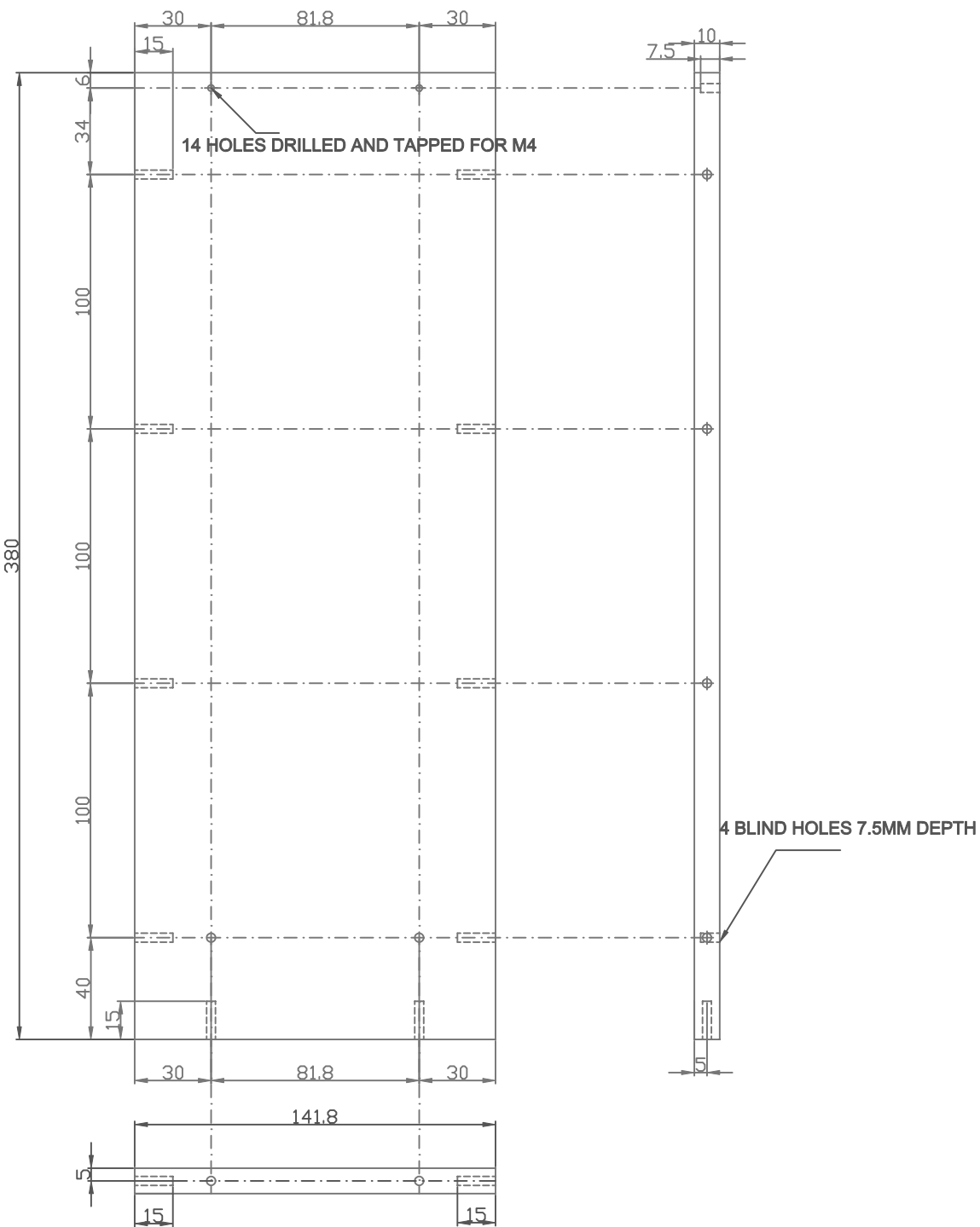
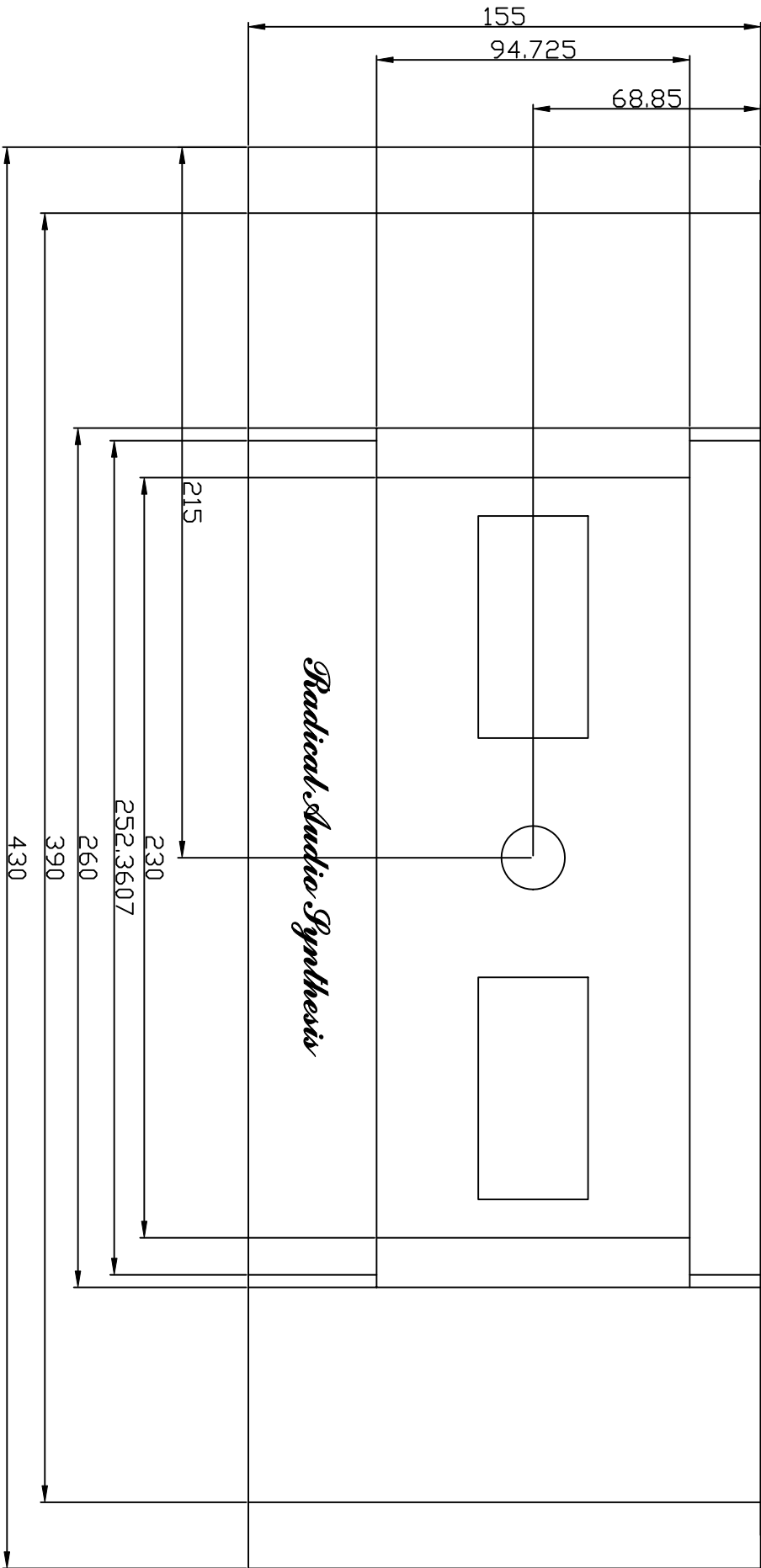
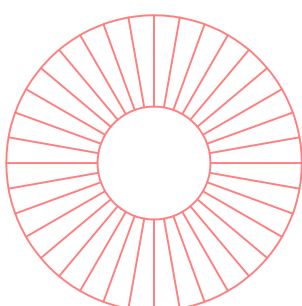
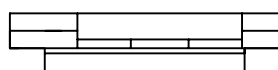


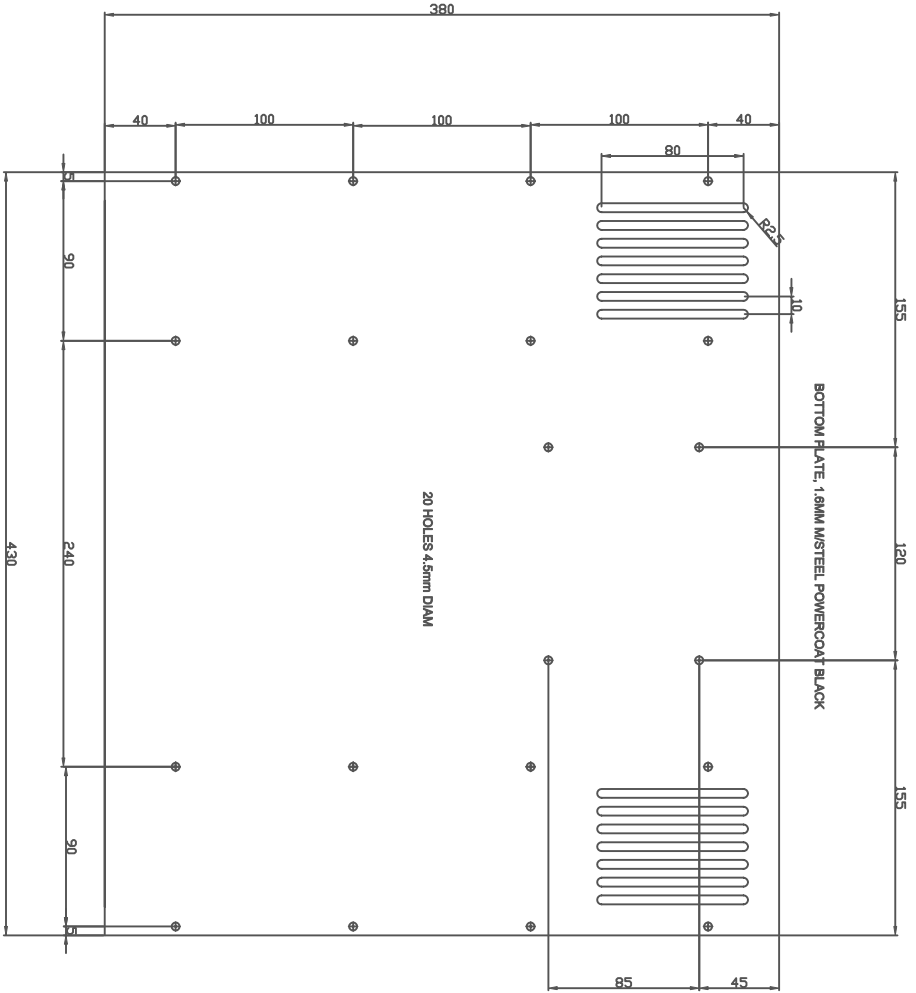


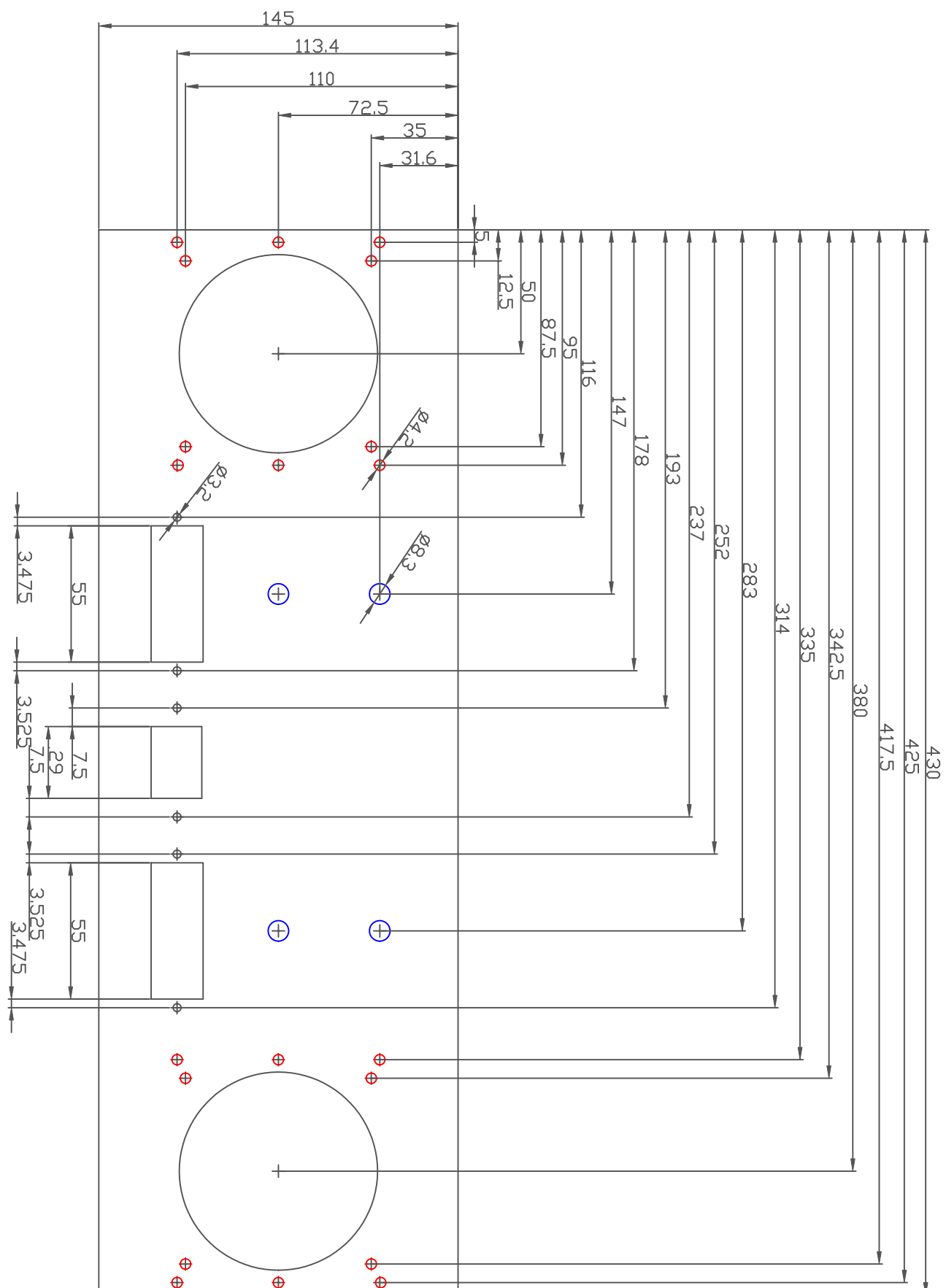
**4 HEAT SINKS PLATES
ANODIZED BLACK**

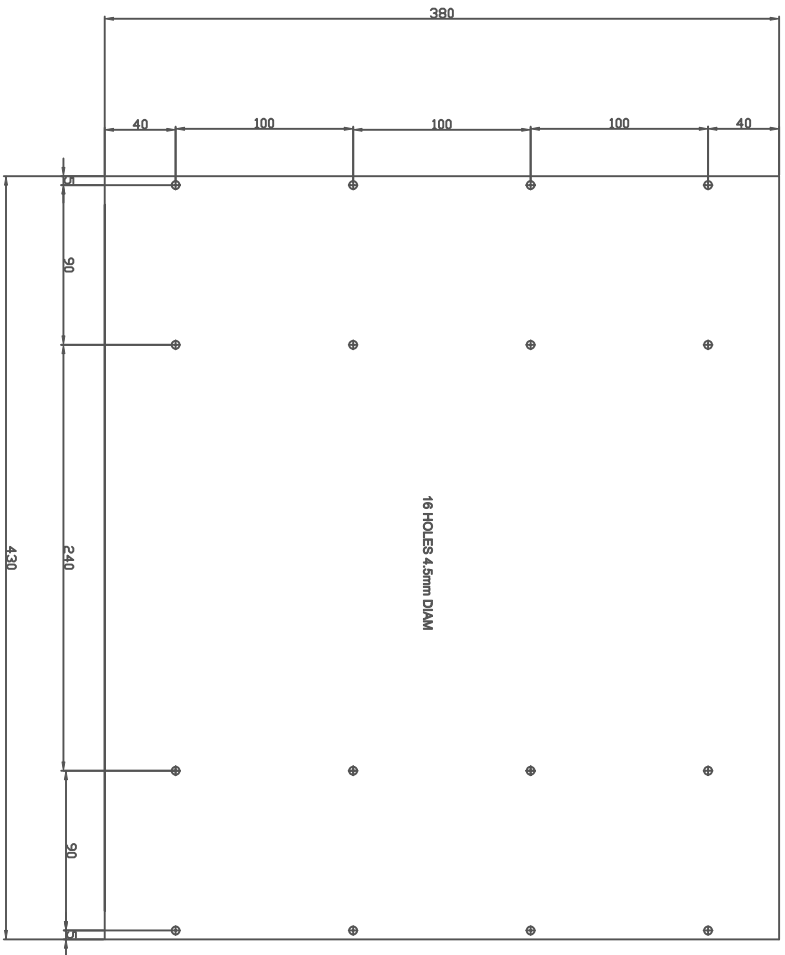






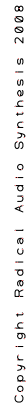






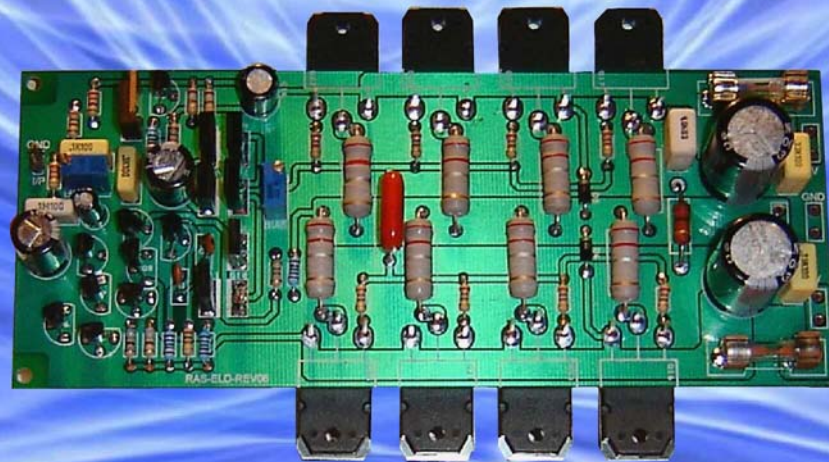
TOP PLATE, 1.8MM MSTEEL POWEROAT BLACK

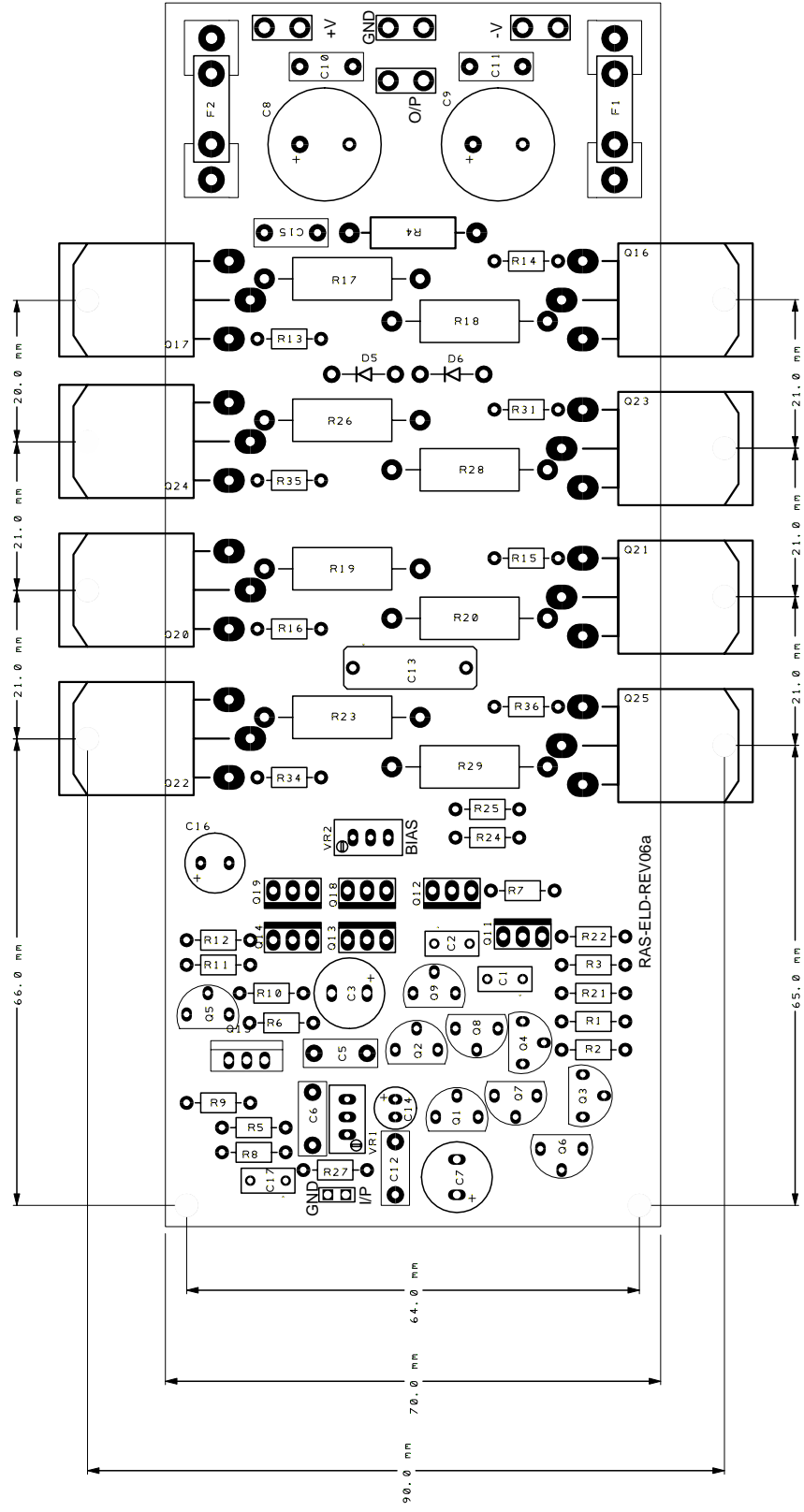
Design: Nico J Ras



Radical Audio Synthesis

120 watt Amplifier Module



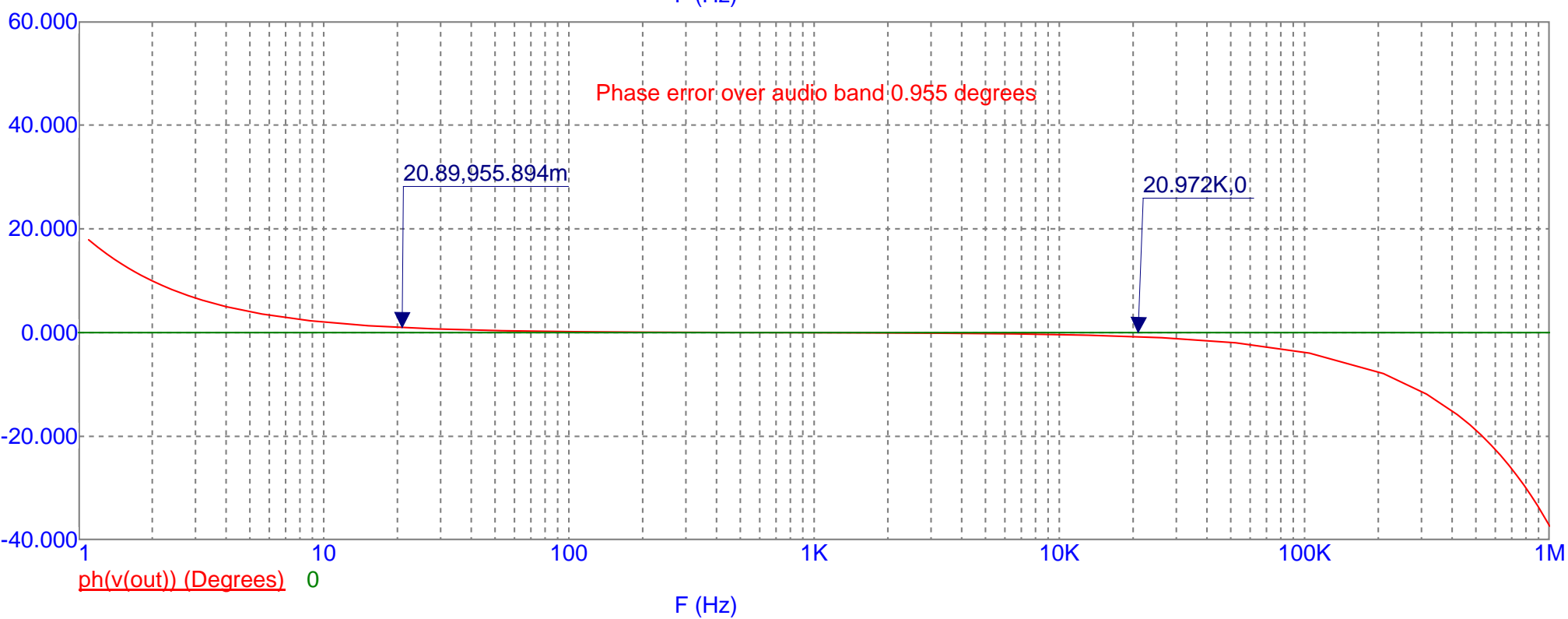
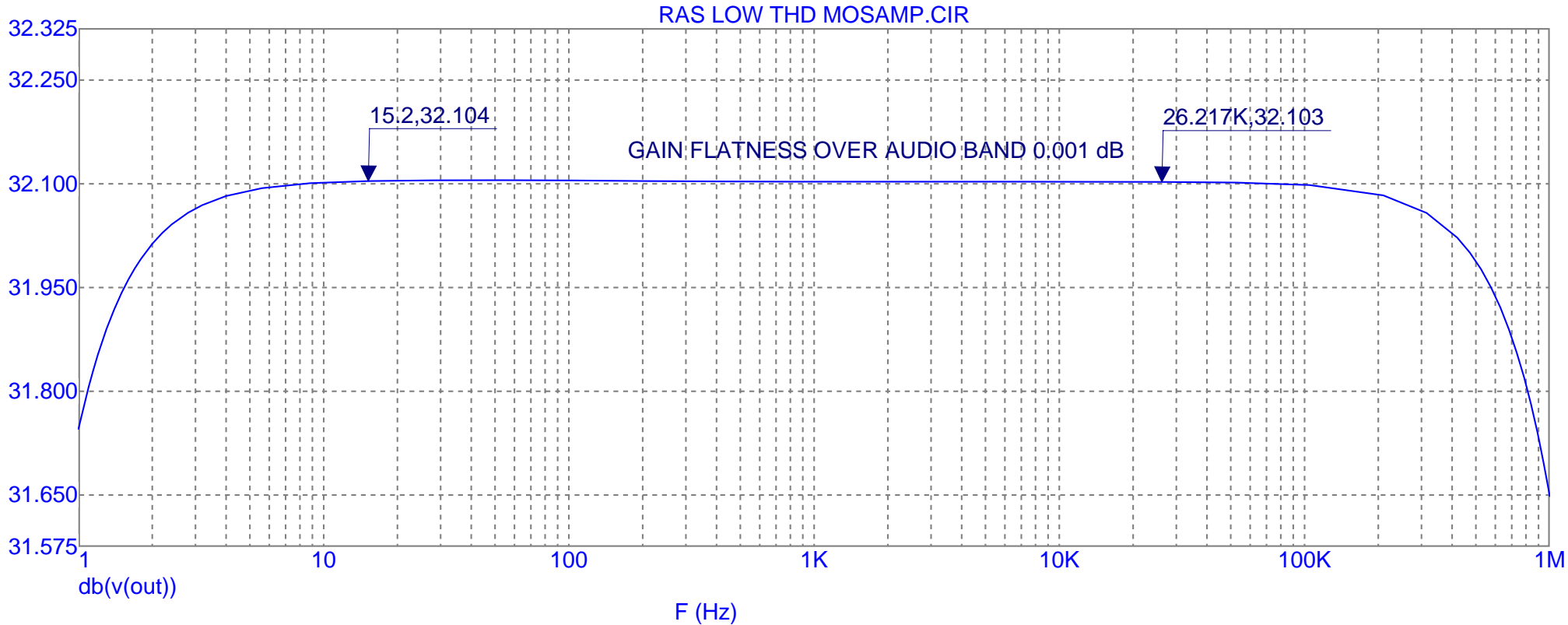


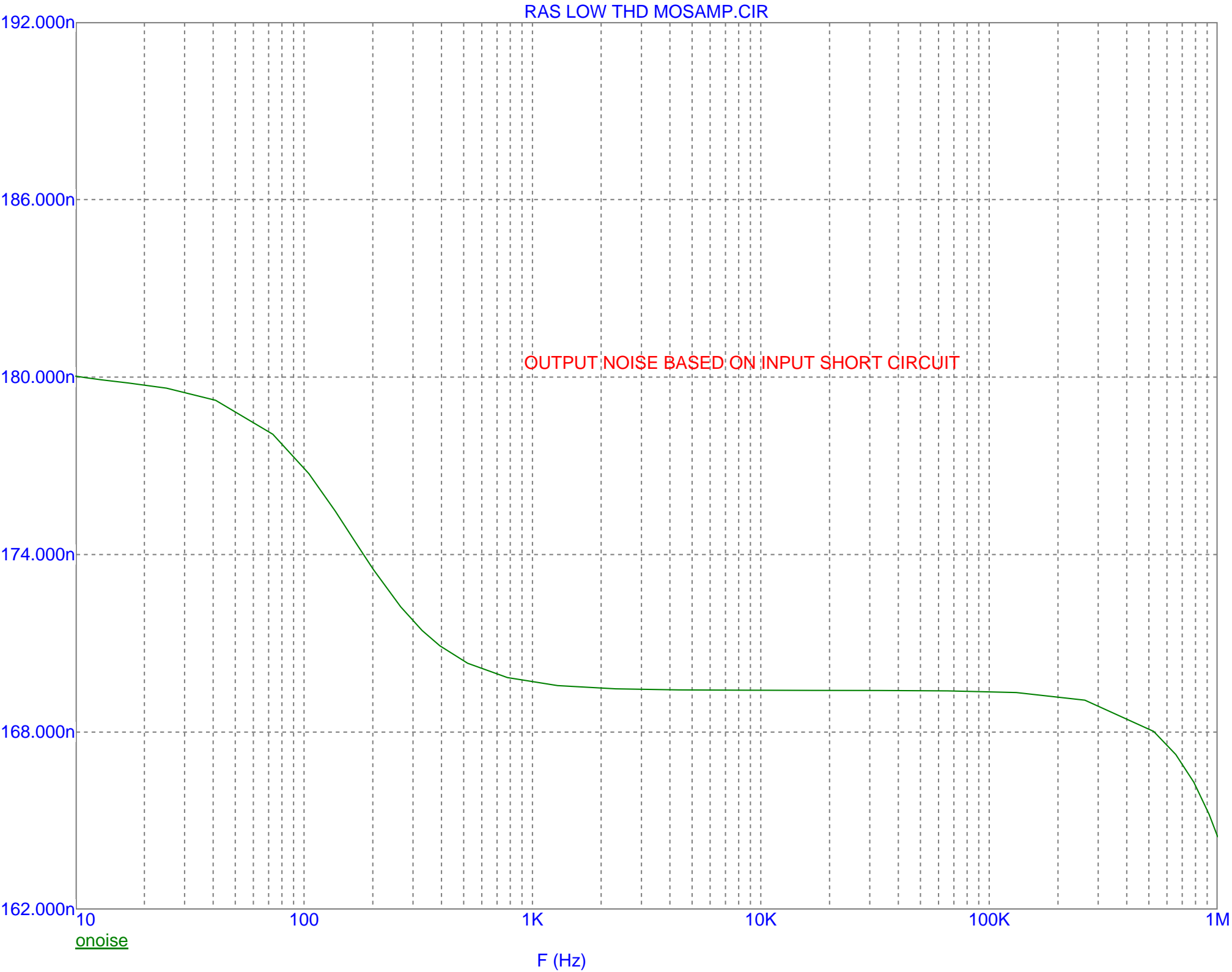
Cct	Ref	Description	Low Distortion Amp R06.1 sp Qty	Package/Size	Name
R17 R18 R19 R20 R23 R26 R28 R29		Resistor	8	5 Watt	0E22
C8 C9		Capacitor Elec Radial	2	63V	1000u
C3 C7		Capacitor Elec Radial	2	16V	1000u
C17		Capacitor Cerm 50V	1	5.0 mm	100n
C13		Capacitor MMK 400V	1	16mm	100n
C5 C6 C12 C15		Capacitor MMK	4	7.5mm	100n
C1 C2			2	5.0 mm	100p
VR1		Trim Pot 25 Turn	1	Top Adjust	100R
R8		Resistor	1	250mW	10E
R4		Resistor	1	1 Watt	10E
R6 R7 R10		Resistor	3	250mW	10K
C14		Capacitor Elec Radial	1	35V	10u
R3		Resistor	1	250mW	150E
R11 R12		Resistor	2	250mW	180E
R5		Resistor	1	250mW	1K0
D5 D6			2	DSC	1N4007
J1			1	DSC	2 Way Pin
R9		Resistor	1	250mW	220E
R25 R27		Resistor	2	250mW	22K
R13 R14 R15 R16 R31 R34 R35 R36		Resistor	8	250mW	270E
R21 R22		Resistor	2	250mW	2K2
C4		Capacitor Cerm 50V	1	0805	2p2

Low Distortion Amp R06.1 sp

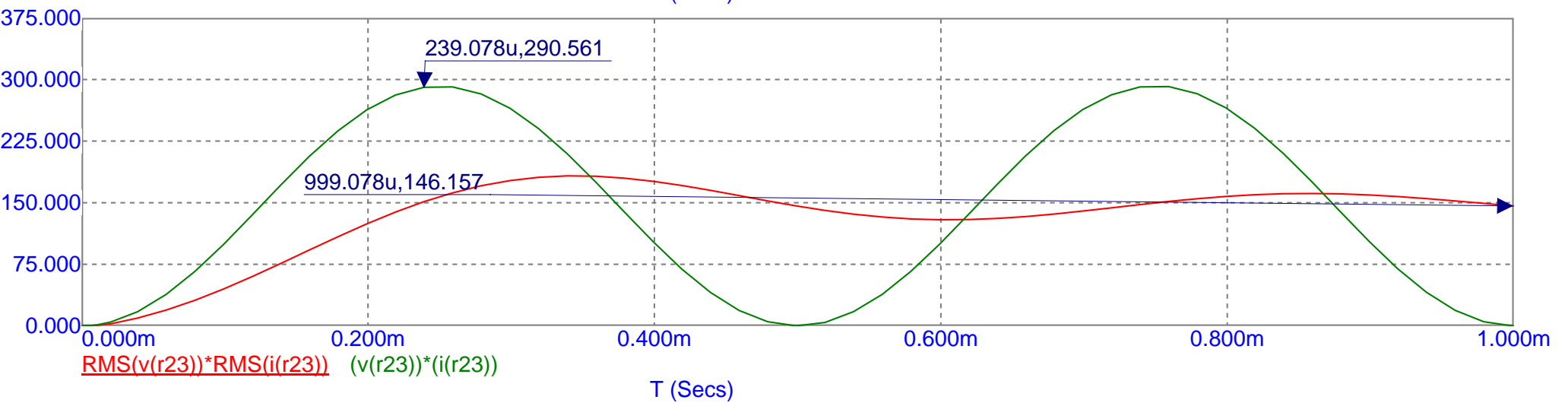
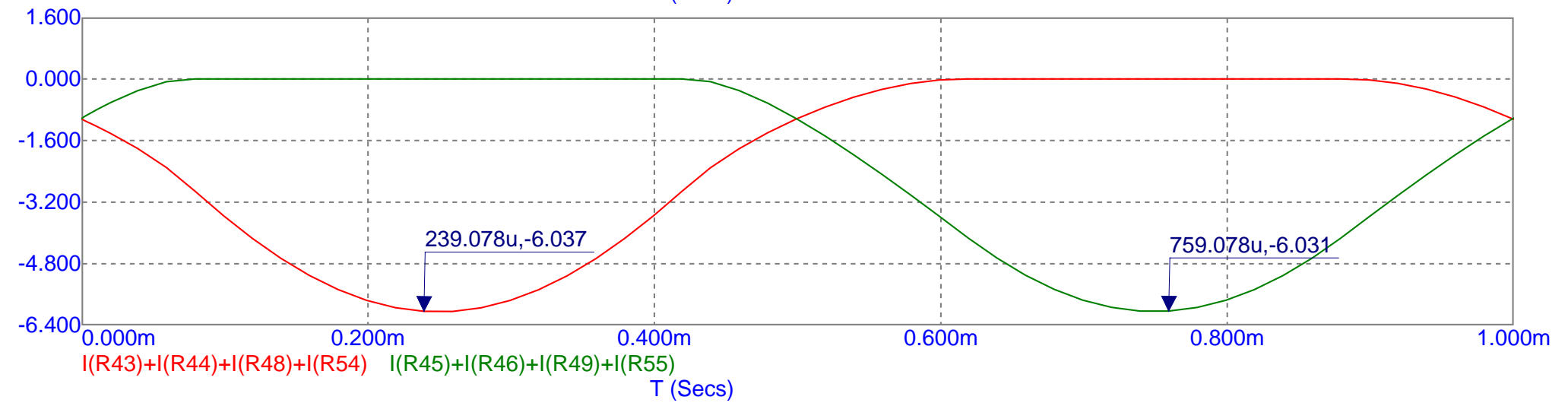
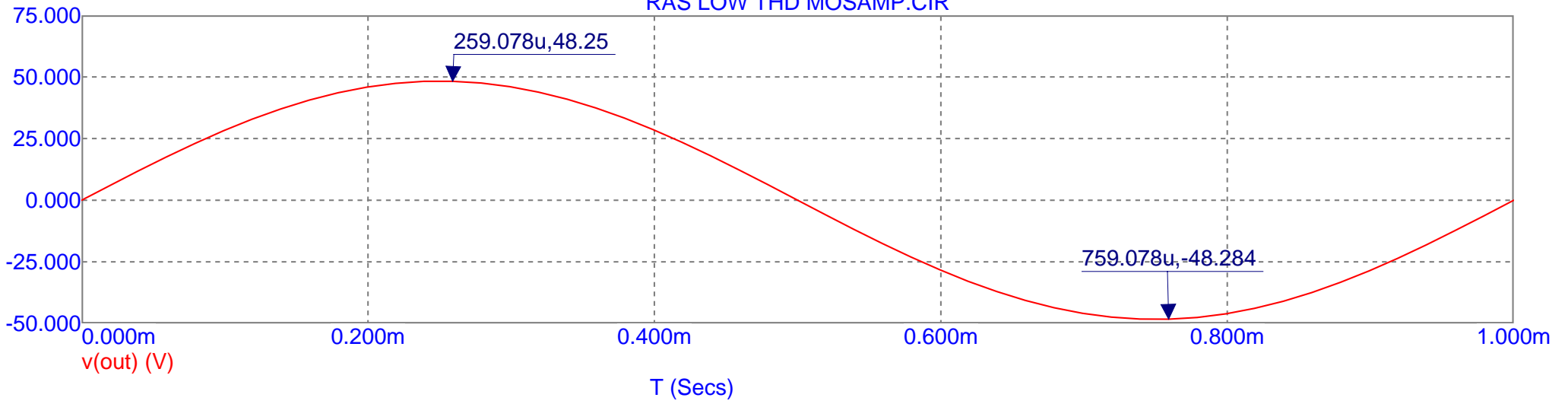
Q16 Q21 Q23 Q25	MOSFET	4	TOP-3P	2SJ162
Q17 Q20 Q22 Q24	MOSFET	4	T0-3P	2SK1058
C10 C11	Capacitor Cerm 50V	2	MMK07.5	330n
C16	Capacitor Elec Radial	1	63V	47u
R24	Resistor	1	250mW	560E
VR2	Trim Pot 25 Turn	1	Top Adjust	5K
R1 R2	Resistor	2	250mW	680E
Q11 Q12	Transistor	2	T0-126	BD139
Q13 Q14 Q18 Q19	Transistor	4	T0-126	BD140
P1 P2 P3 P4	Spade Connector	4	USER	6.3mm
F1 F2	Fuse 20mm	2	Fuse Glass 20mm PCB Mount	
Q3 Q4 Q6 Q7 Q8 Q9	Transistor	6	T0-92	MPSA06
Q1 Q2 Q5	Transistor	3	T0-92	MPSA56
Q15	Transistor	1	T0-220 V	TIP42C

RAS LOW THD MOSAMP.CIR

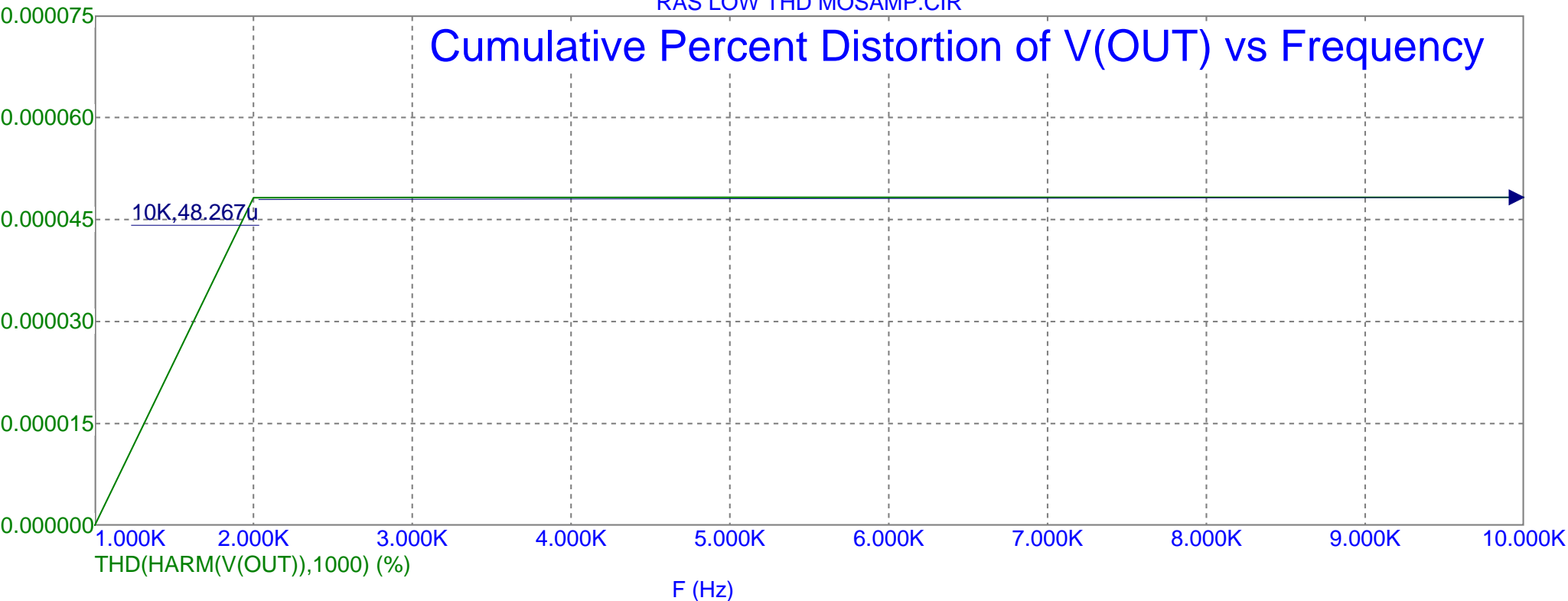




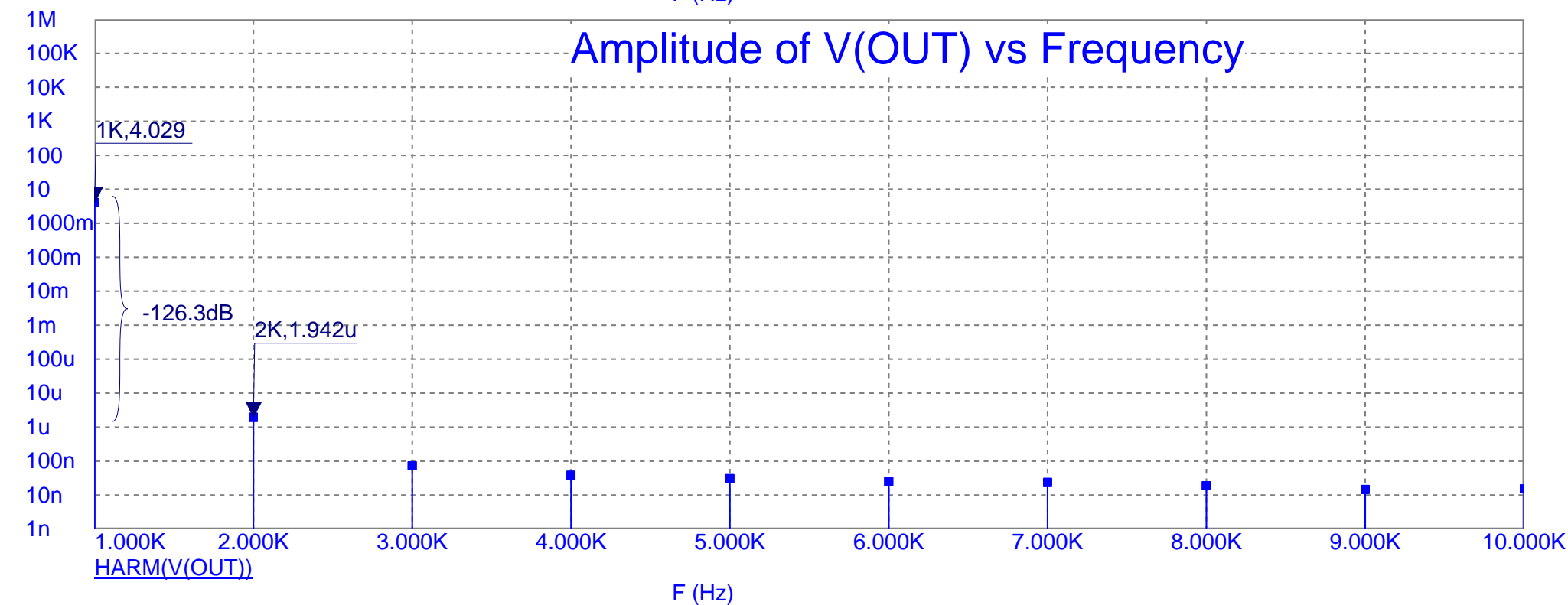
RAS LOW THD MOSAMP.CIR



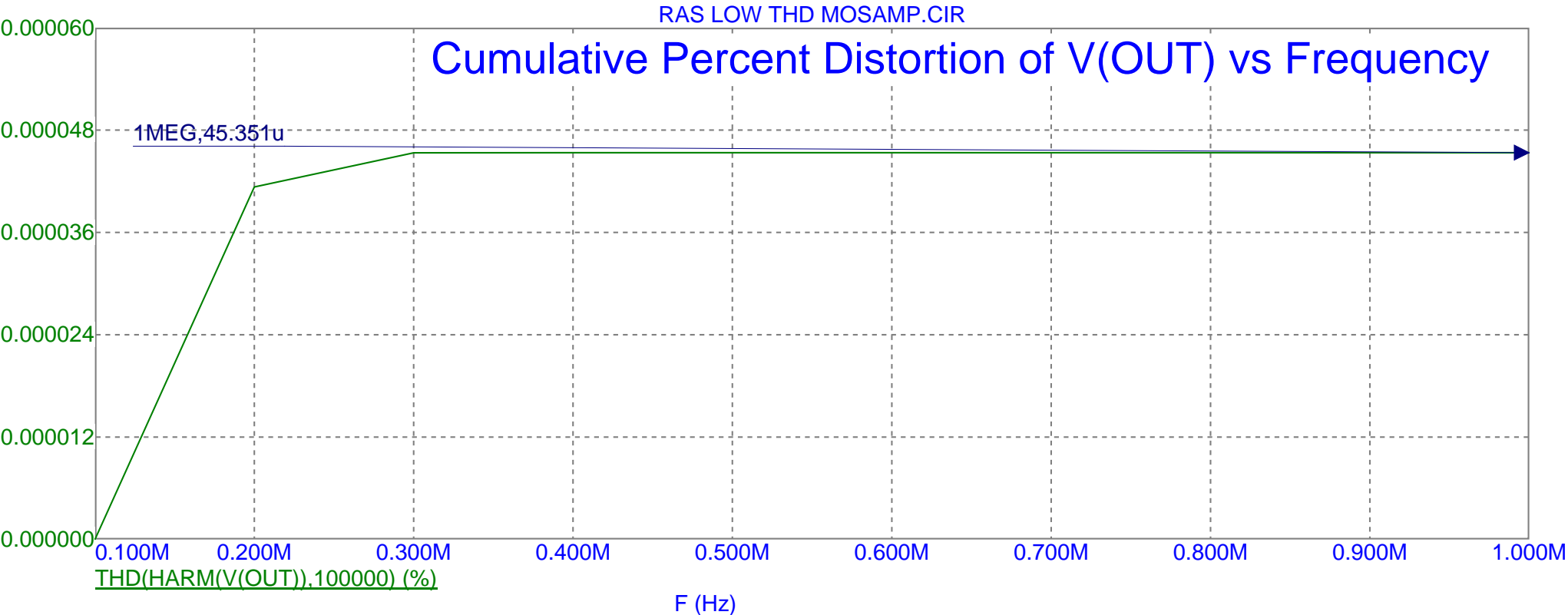
Cumulative Percent Distortion of V(OUT) vs Frequency



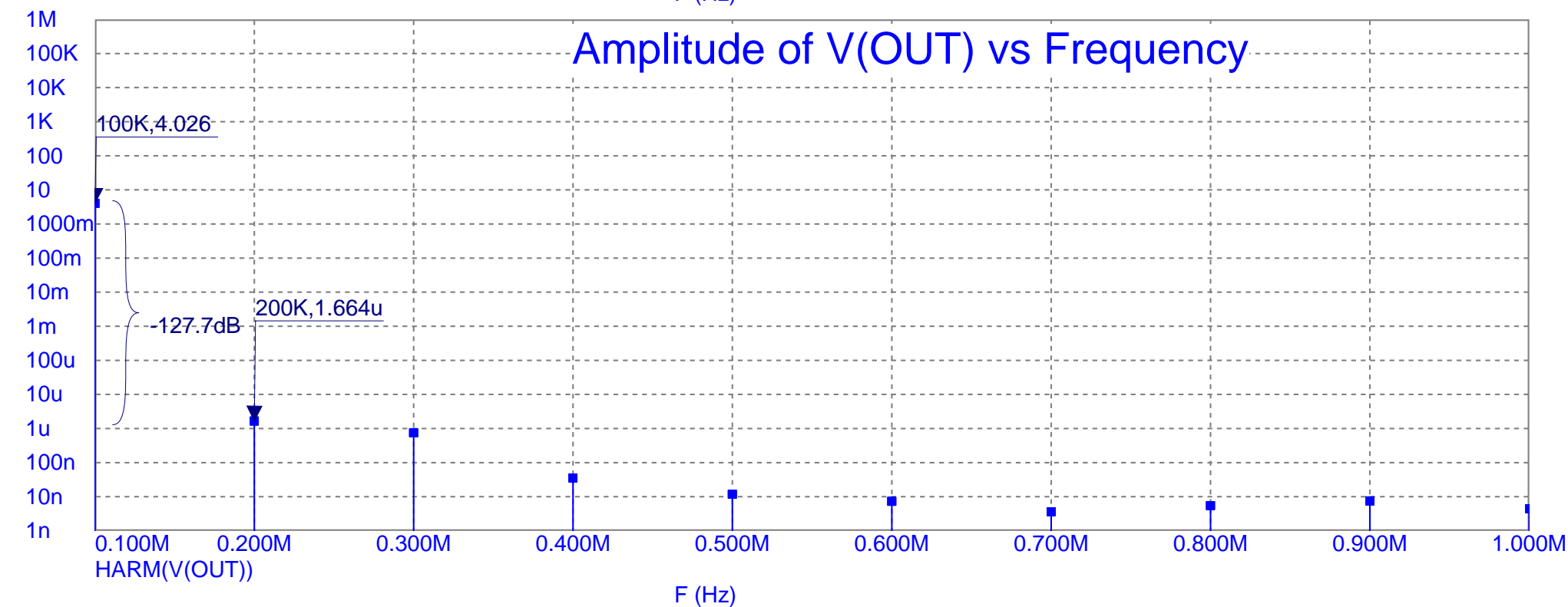
Amplitude of V(OUT) vs Frequency

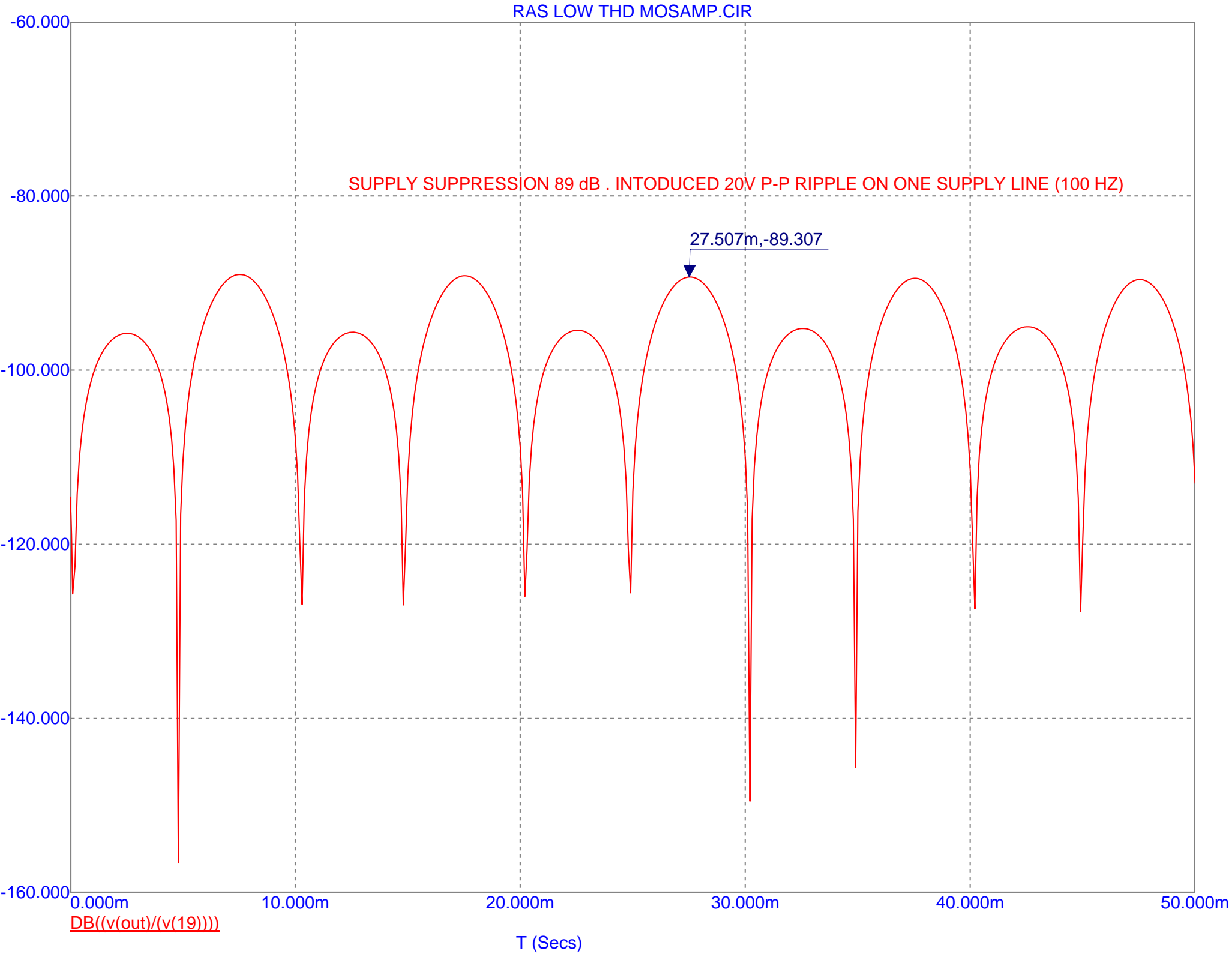


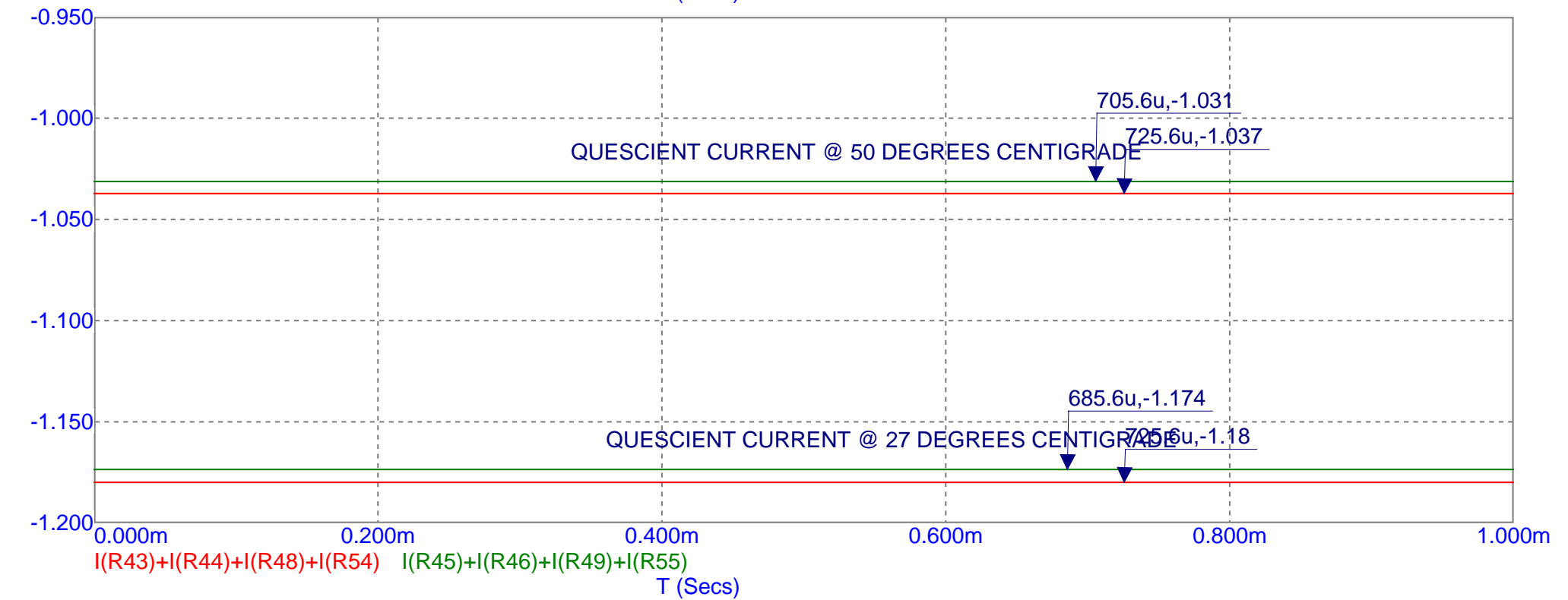
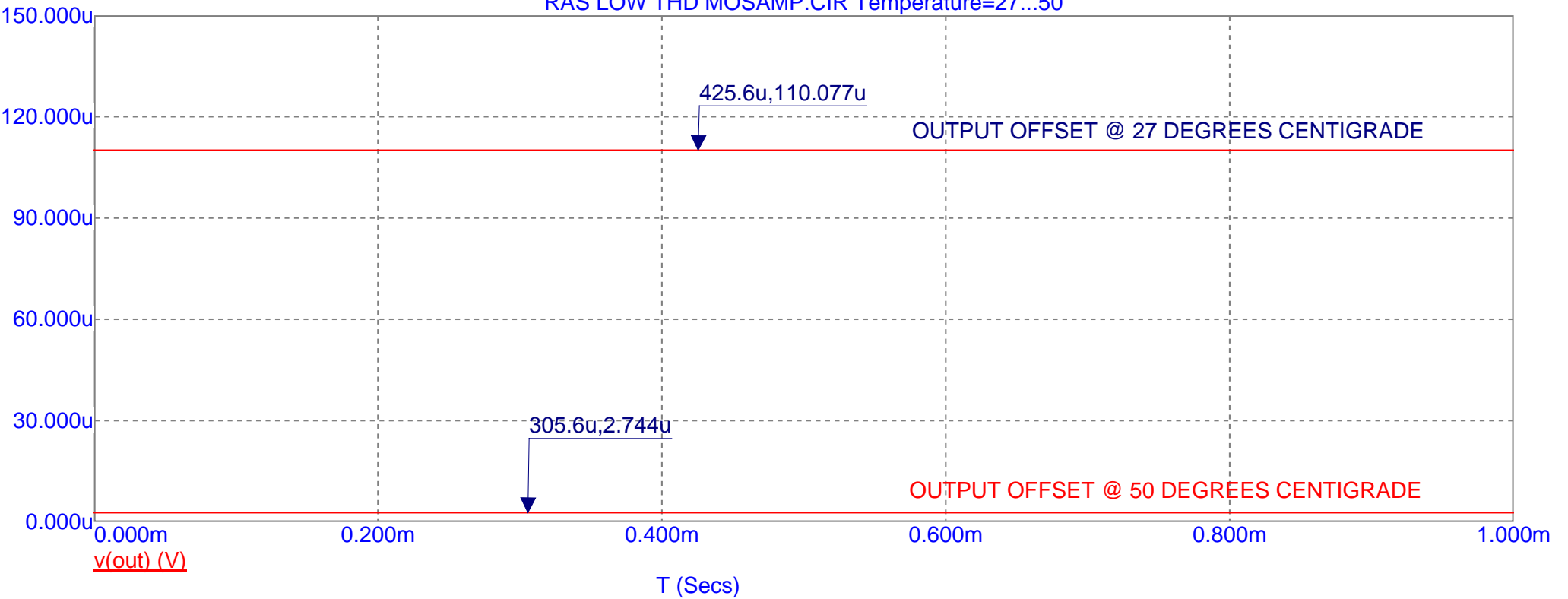
Cumulative Percent Distortion of V(OUT) vs Frequency

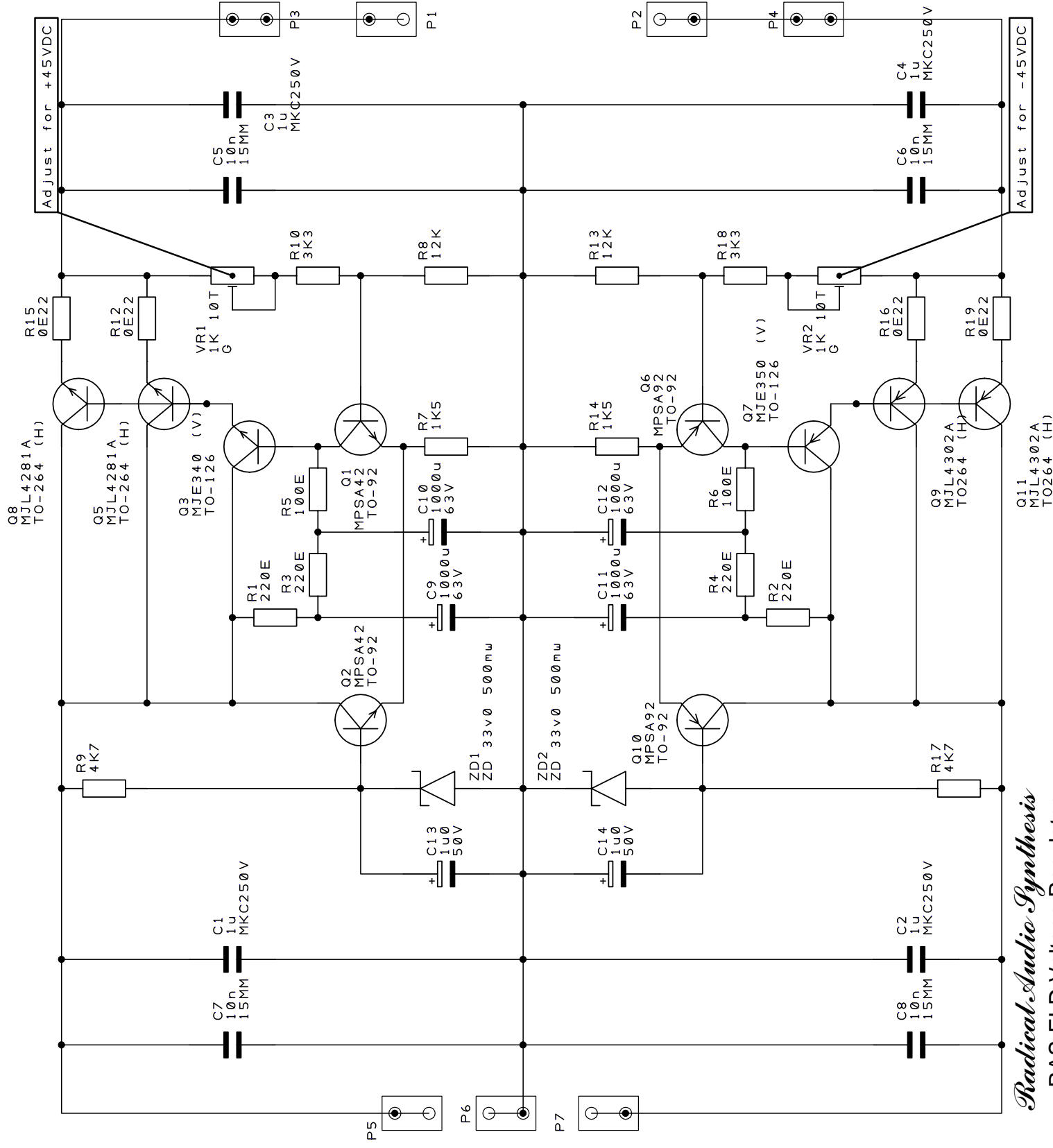


Amplitude of V(OUT) vs Frequency



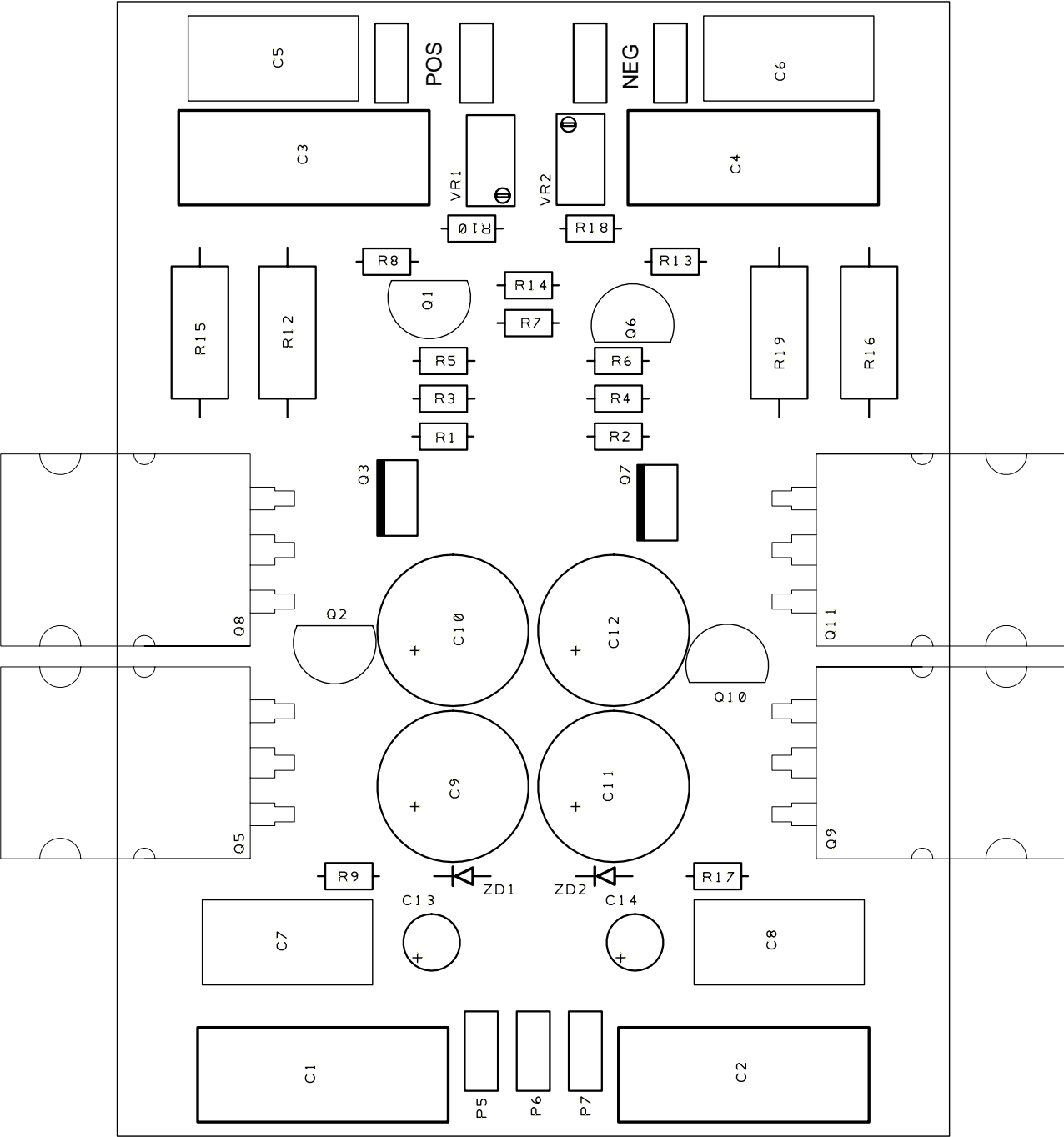




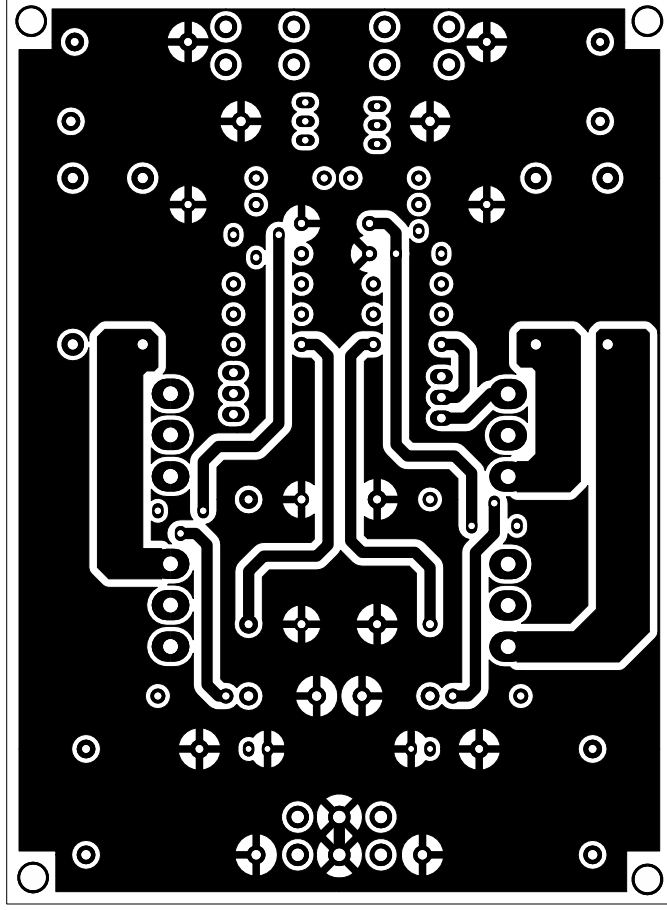


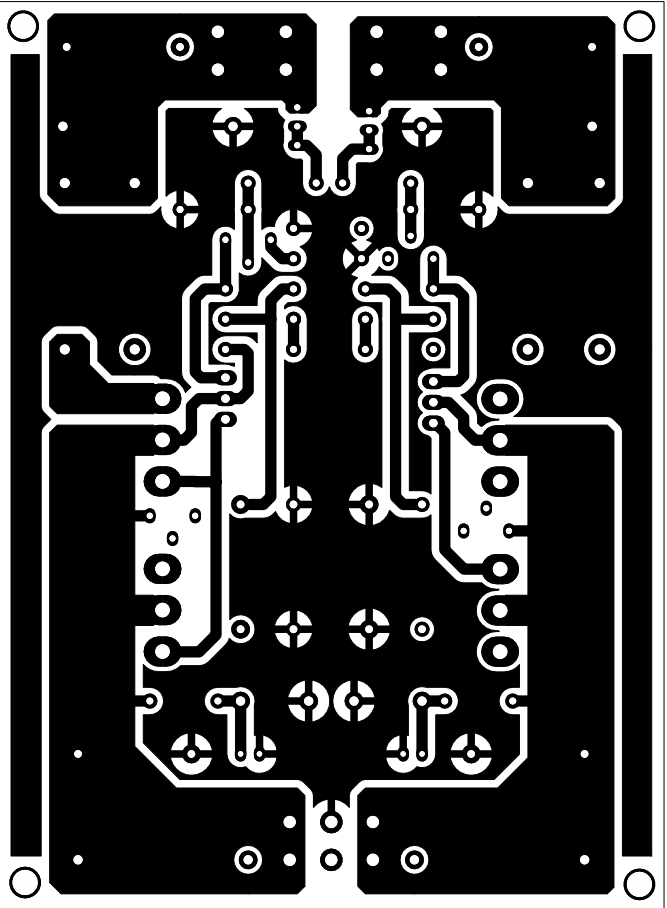
Ref	Qty	Name	Description	Power Supply	01.1 sp Package
R12 R15 R16 R19	4	0E22	Resistor		5 Watt
C9 C10 C11 C12	4	1000u	Capacitor Elec Radial		63V
R5 R6	2	100E	Resistor		250mW
C5 C6 C7 C8	4	10n	Capacitor Cerm 50V		15MM
R8 R13	2	12K	Resistor		250mW
R7 R14	2	1K5	Resistor		250mW
VR1 VR2	2	5K 25 Turn	Triapot top adjust		
C1 C2 C3 C4	4	1u			MKC250V
C13 C14	2	1u0	Capacitor Elec Radial		50V
R1 R2 R3 R4	4	220E	Resistor		250mW
R10 R18	2	3K3	Resistor		250mW
R9 R17	2	4K7	Resistor		250mW
P1 P2 P3 P4 P5 P6 P7	7	Flag 6.3mm	Vertical		
Q3	1	MJE340			T0-126
Q7	1	MJE350			T0-126
Q5 Q8	2	MJL4281A			T0-264
Q9 Q11	2	MJL4302A			T0264
Q1 Q2	2	MPSA42			T0-92
Q6 Q10	2	MPSA92			T0-92

Power SupplyR01. I sp				
ZD1	2	ZD 33v0	500mw	Radi al
ZD2				

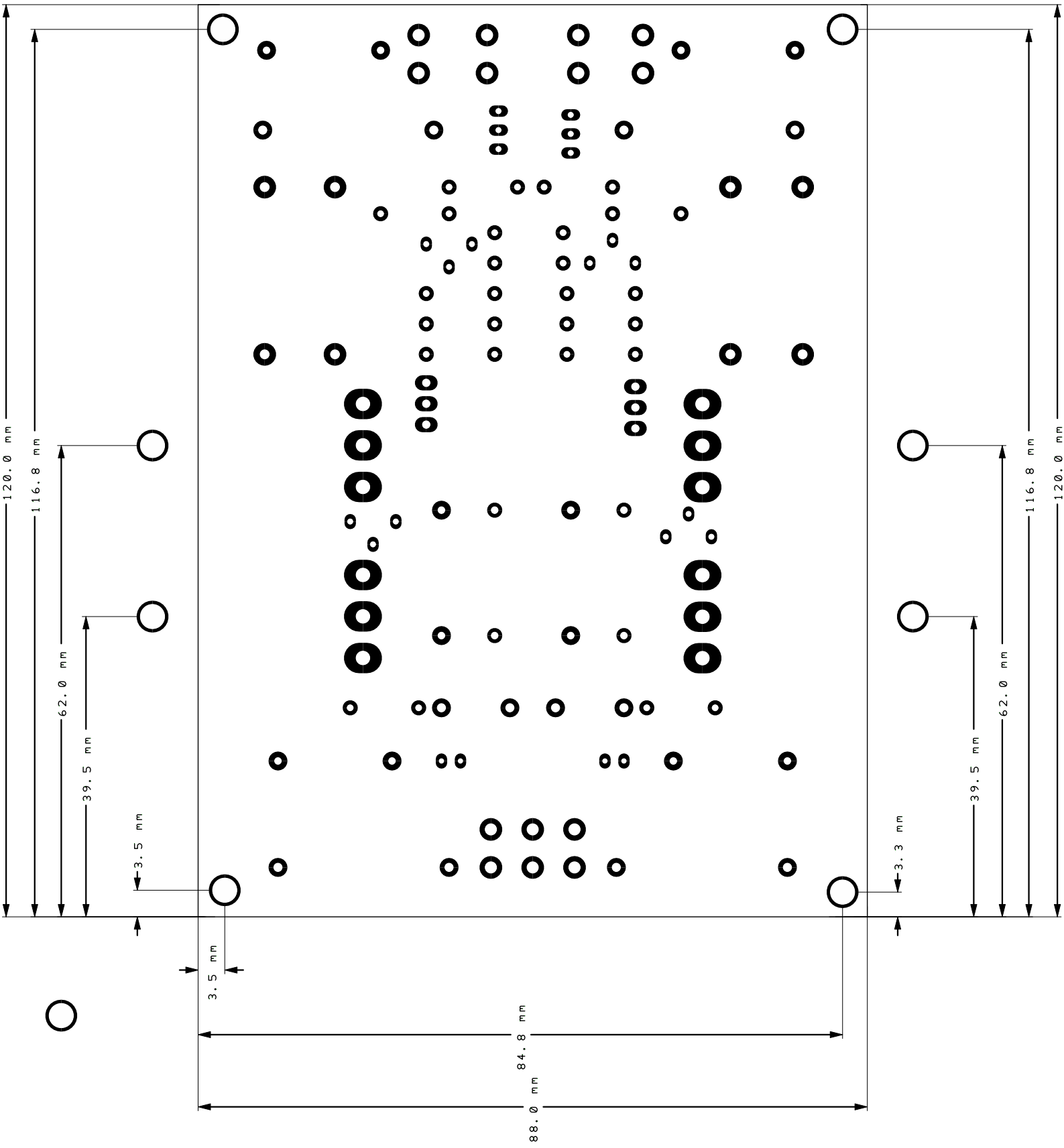


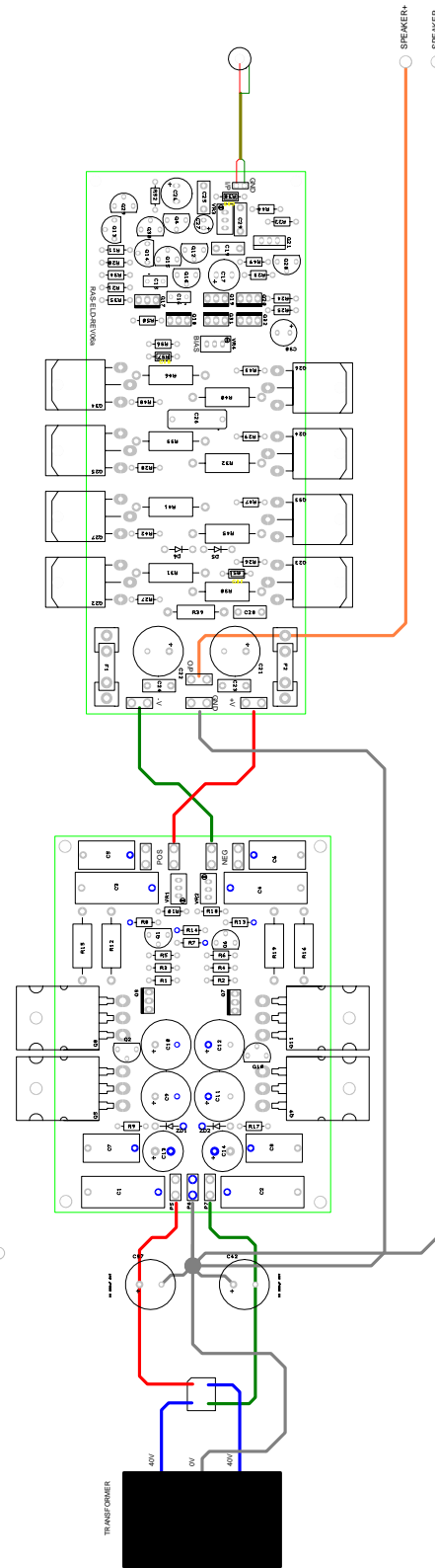
TOP COPPER

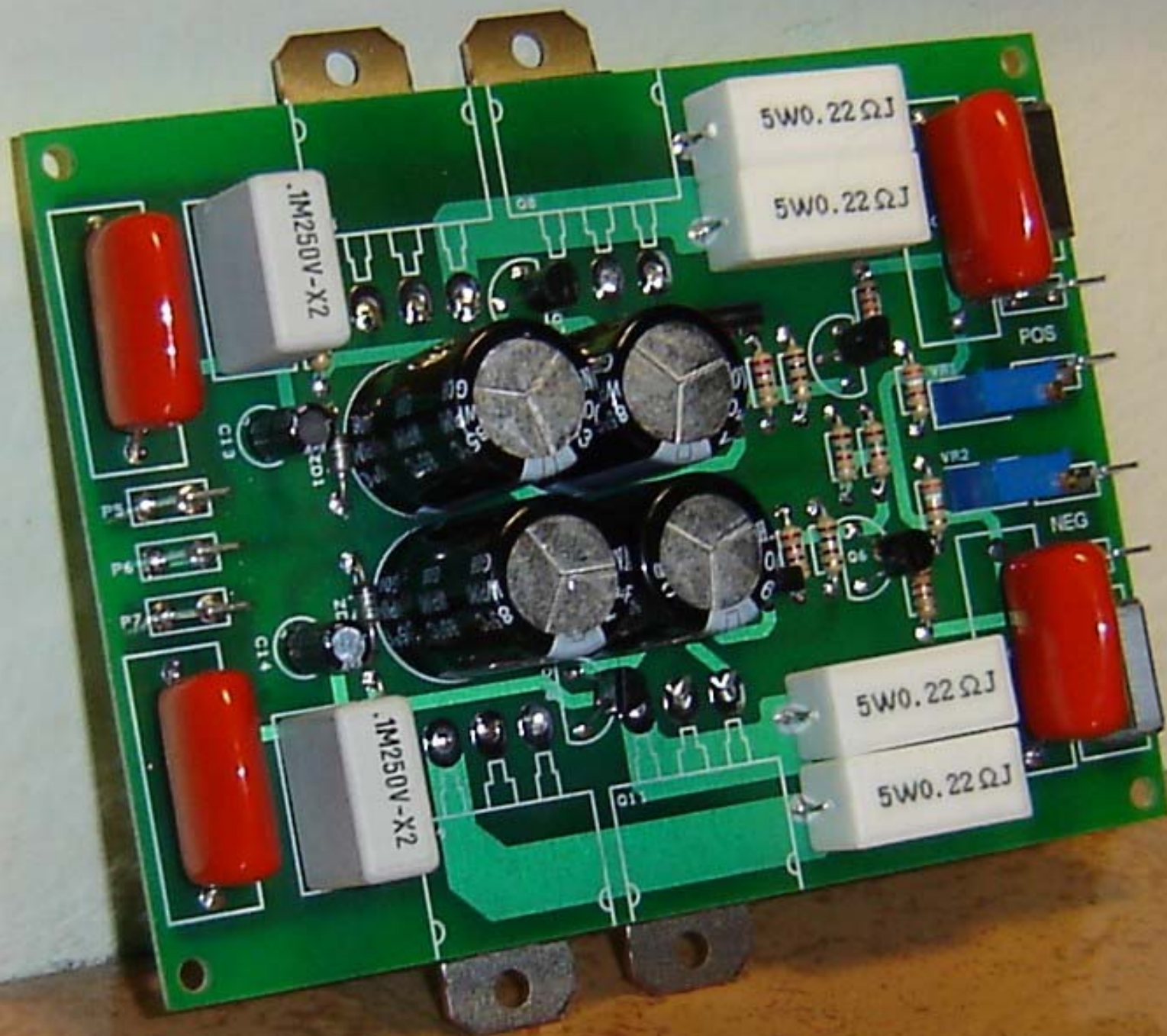


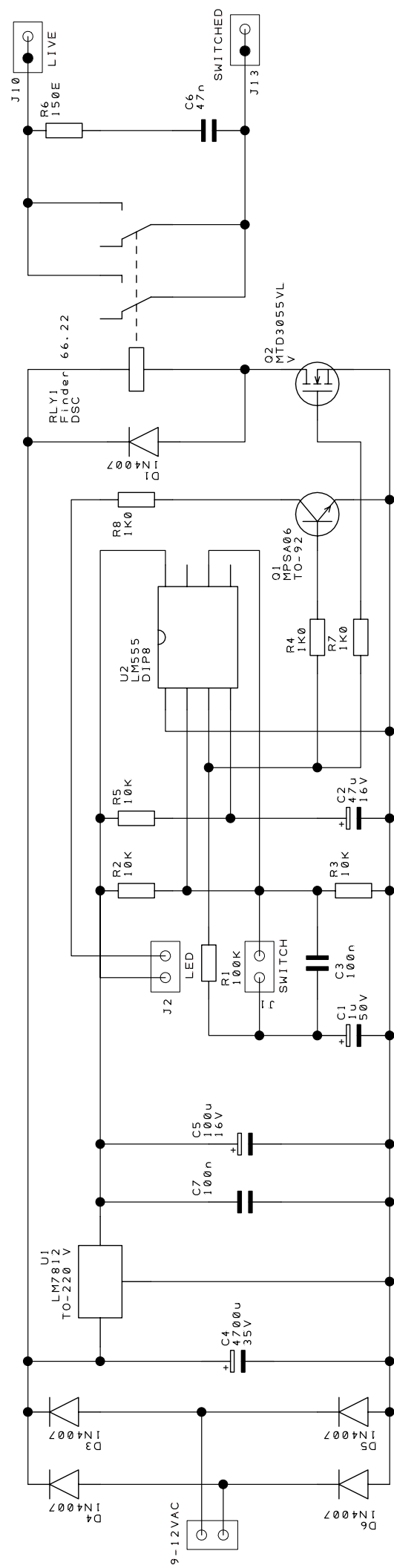


⊙
BOTTOM COPPER

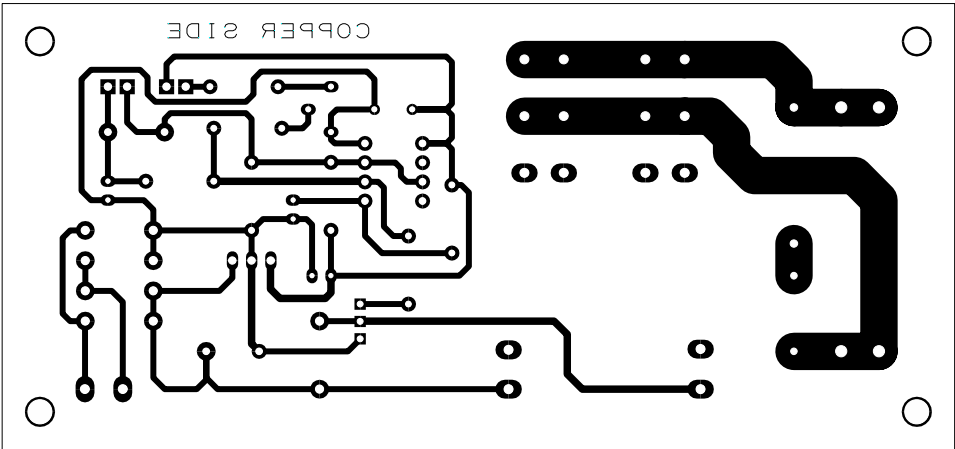


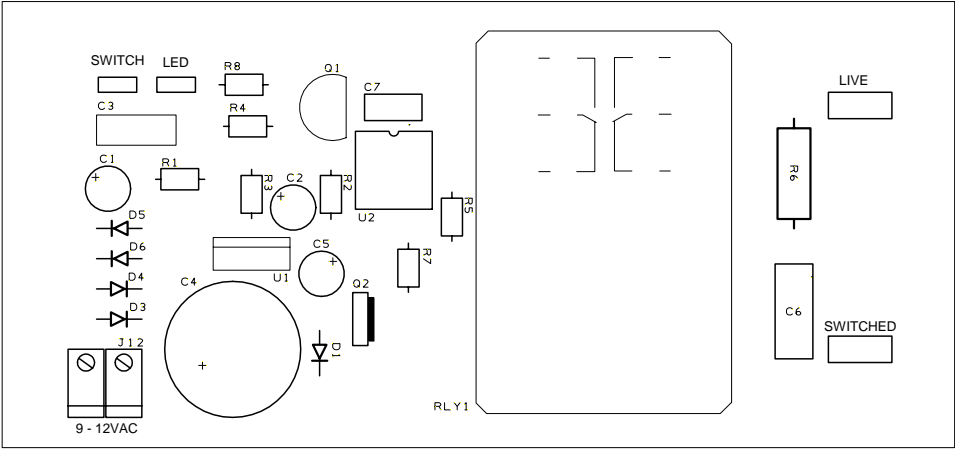


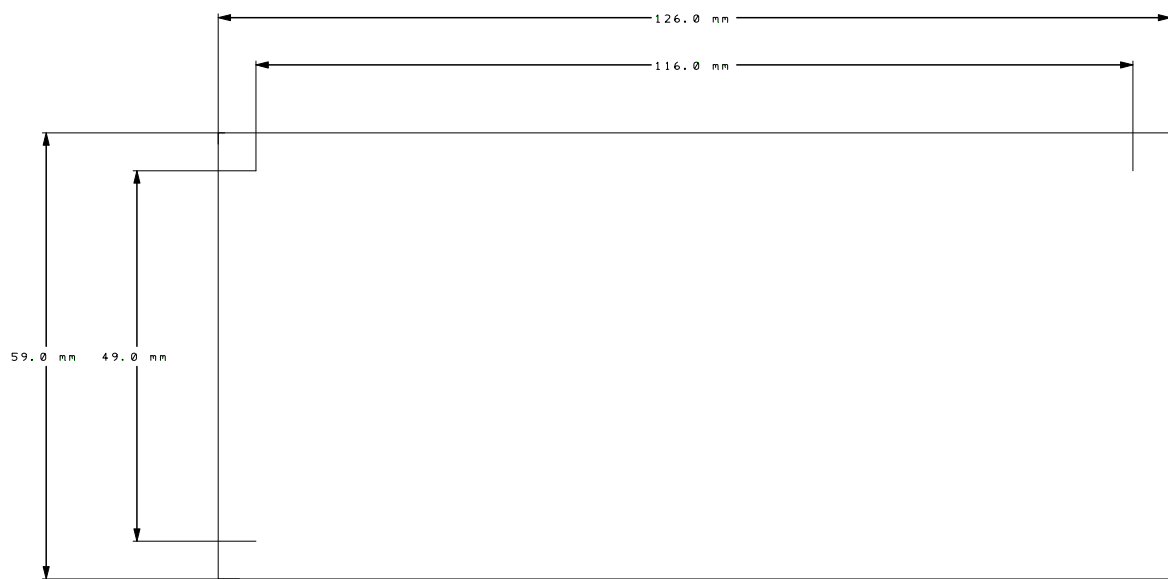


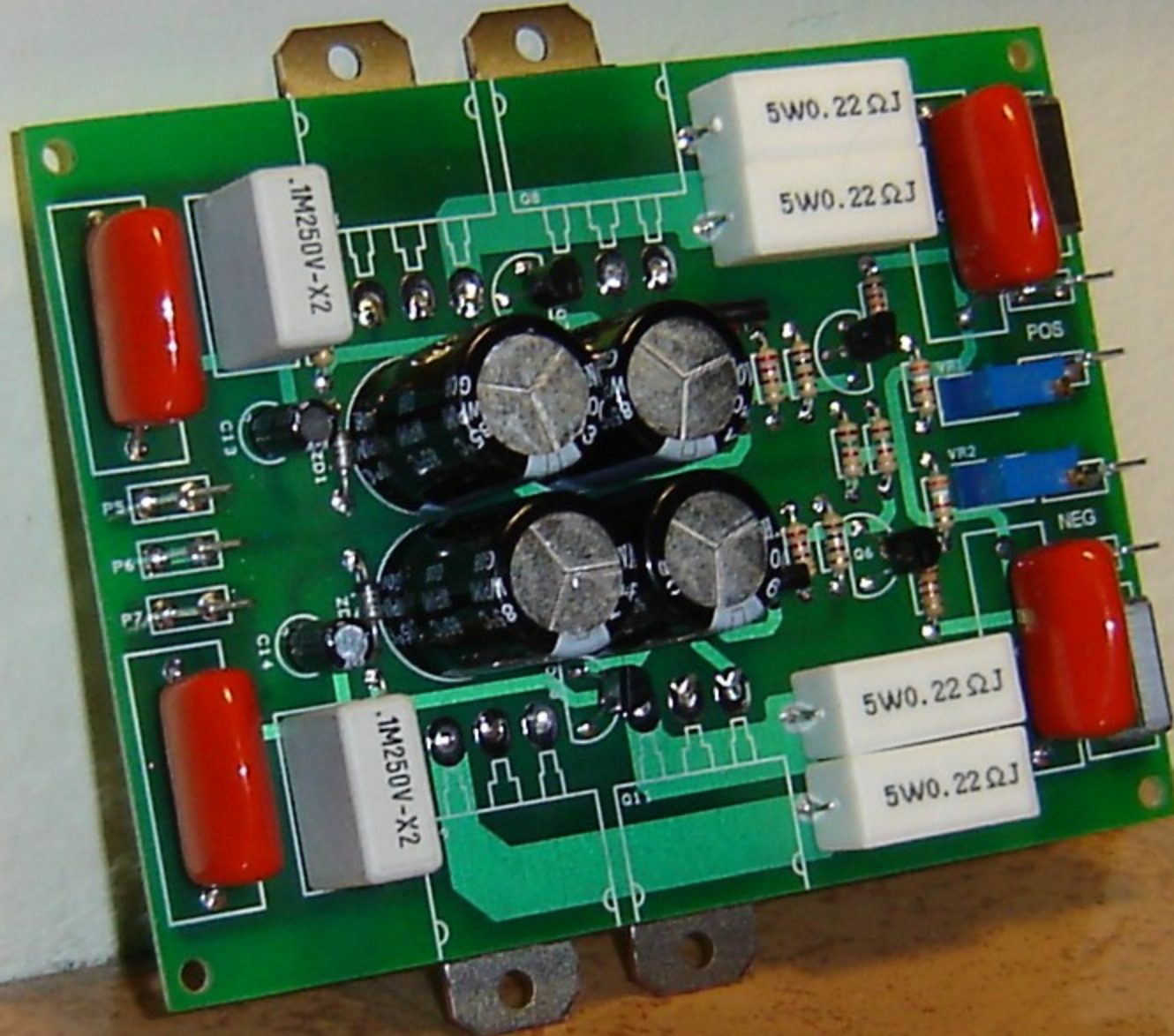


Cct Ref	Description	Power Qty	Swi tch. I sp Package/Si ze	Name
R1	Resi stor	1	250mW	100K
C7	Capaci tor Cerm 50V	1	5_0 mm	100n
C3	Capaci tor Cerm 50V	1	MMK07_5	100n
C5	Capaci tor Elec Radial	1	16V	100u
R2 R3 R5	Resi stor	3	250mW	10K
R6	Resi stor	1	1 Watt	150E
R4 R7 R8	Resi stor	3	250mW	1K0
D1 D3 D4 D5 D6		5	DSC	1N4007
C1	Capaci tor Elec Radial	1	50V	1u
J1 J2		2	DSC	2 Way Pin
C4	Capaci tor Elec Radial	1	35V	4700u
C6		1	10 mm	47n
C2	Capaci tor Elec Radial	1	16V	47u
J12		1	DSC	8191-2
RLY1		1	DSC	Fi nder 66. 22
J10 J13		2	USER	Fl ag 6. 3mm
U2		1	DI P8	LM555
U1		1	T0-220 V	LM7812
Q1		1	T0-92	MPSA06
Q2		1	V	MTD3055VL























Radical Audio Synthesis

