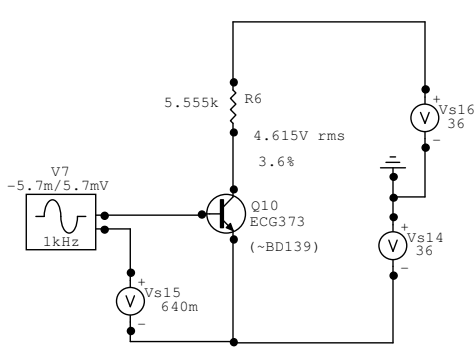


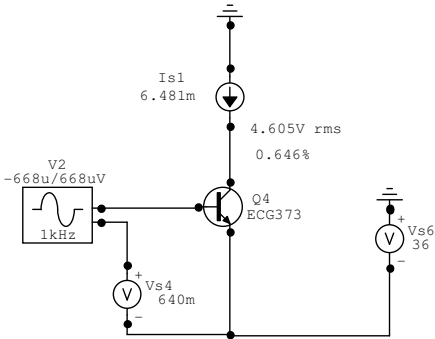
harmonics to 14th

input levels adjusted for nominally
same output voltages



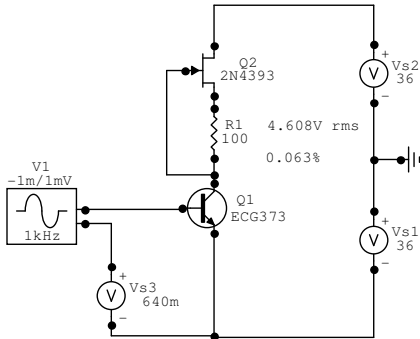
resistive load

2nd -29dBr
3rd -69dBr
4th -96dBr
5th -123dBr
6th -175dBr
7th -186dBr



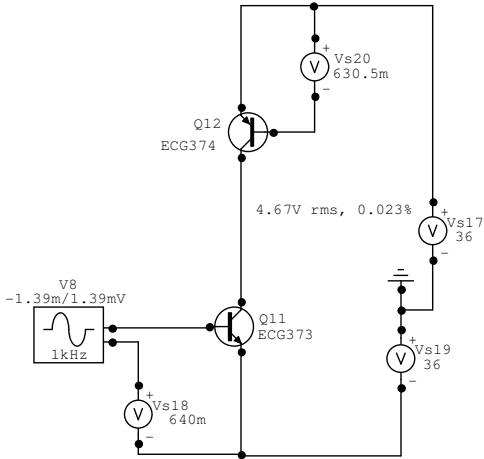
ideal current source load

2nd -43dBr
3rd -92dBr
4th -135dBr
5th -159dBr
6th -182dBr
7th -205dBr



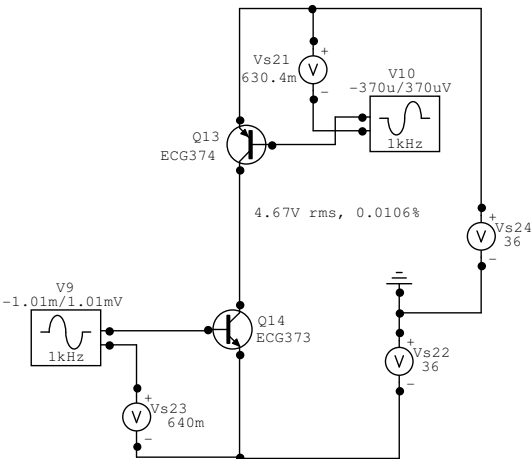
simple JFET load

2nd -65dBr
3rd -82dBr
4th -126dBr
5th -156dBr
6th -182dBr
7th -176dBr



complementary bipolar load
as current source

2nd -73dBr
3rd -86dBr
4th -129dBr
5th -146dBr
6th -173dBr
7th -189dBr



complementary bipolars with
fine-tuned drive voltages

2nd -81dBr
3rd -85dBr
4th -130dBr
5th -146dBr
6th -174dBr
7th -190dBr