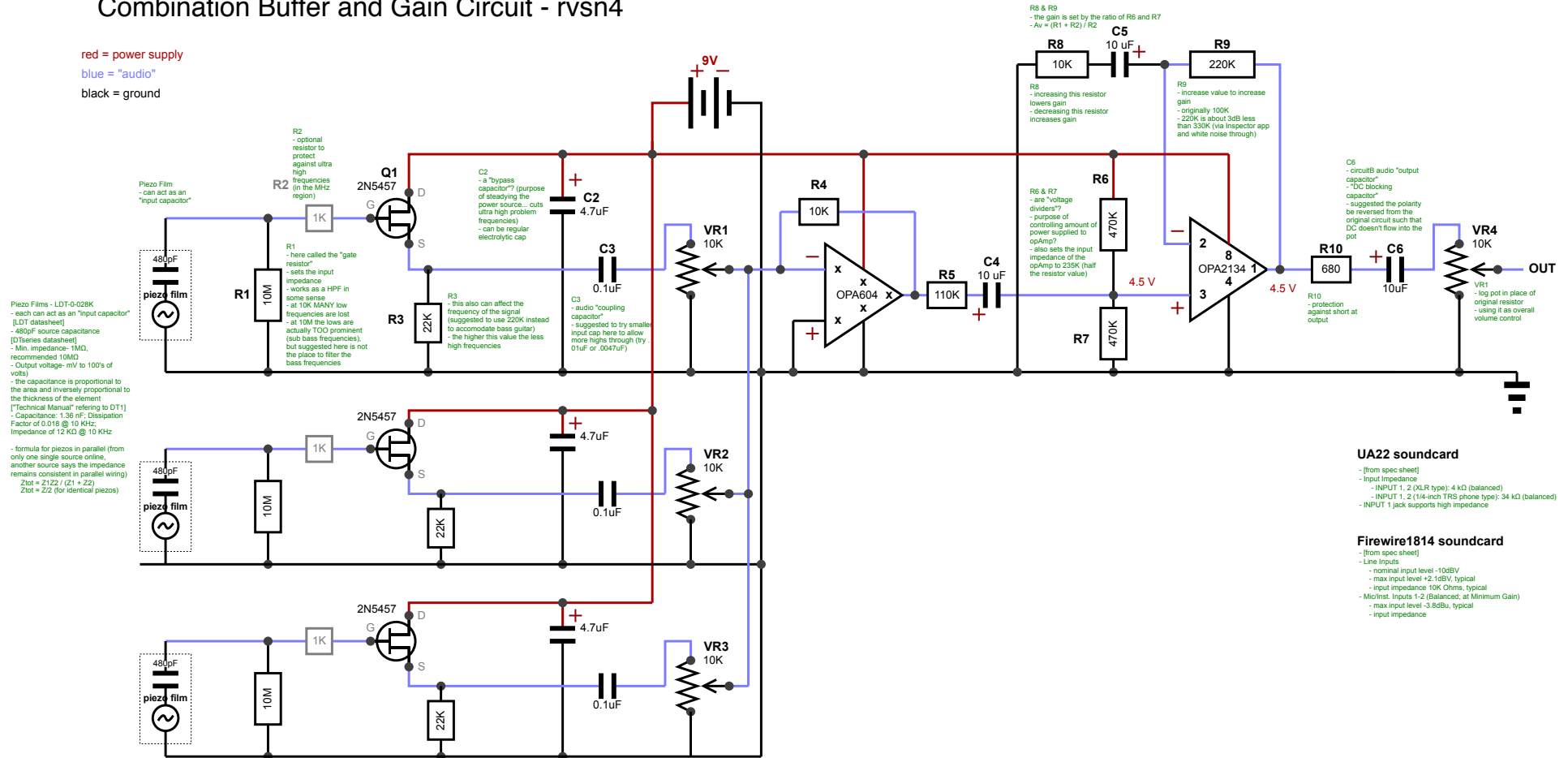


# Combination Buffer and Gain Circuit - rvsn4

red = power supply  
blue = "audio"  
black = ground



**UA22 soundcard**

- (from spec sheet)
- input impedance
- INPUT 1, 2 (XLR type): 4 kΩ (balanced)
- INPUT 1, 2 (1/4-inch TRS phone type): 34 kΩ (balanced)
- INPUT 1 jack supports high impedance

**Firewire1814 soundcard**

- (from spec sheet)
- Line Inputs
- nominal input level -10dBV
- max input level +2.1dBV, typical
- input impedance 10K Ohms, typical
- MicInst. Inputs 1-2 (Balanced, at Minimum Gain)
- max input level -3.8dBu, typical
- input impedance

CircuitA - Buffer Circuit

Virtual Earth Mixer  
(in "inverting mode")

CircuitB - Gain Circuit  
(in "non-inverting mode")