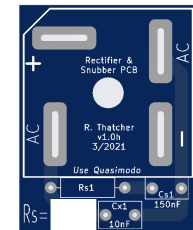
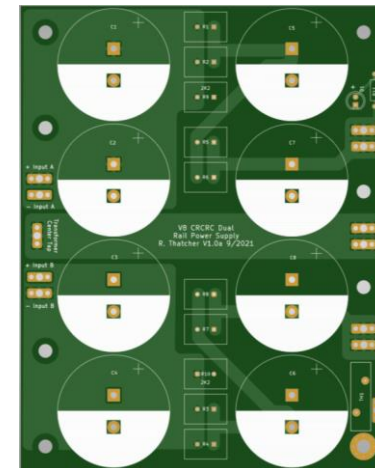
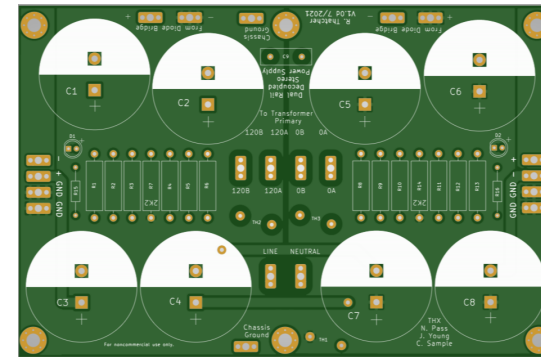
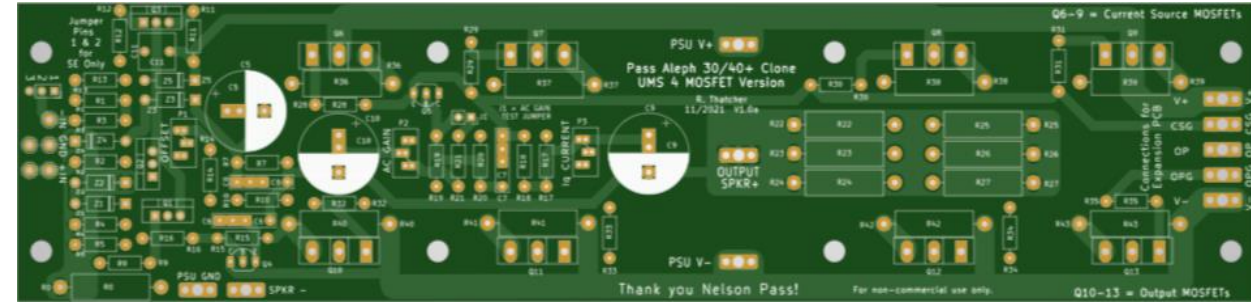


Classic Aleph for UMS Chassis Group Buy

- diyAudio UMS mounting pattern compatibility
- 2oz Copper with ENIG pad finish
- Expandable – daisy chain a 2nd board for higher power Alephs
- Adjustable: Offset, AC Gain, Current
- Flexible for building Aleph 3, 30, 5, 60, 2, etc.
- Options for Power Supply PCBs
- Matched MOSFETs available
- ENIG pads & 2oz copper

Approximate / Preliminary Pricing – based on 20 sets

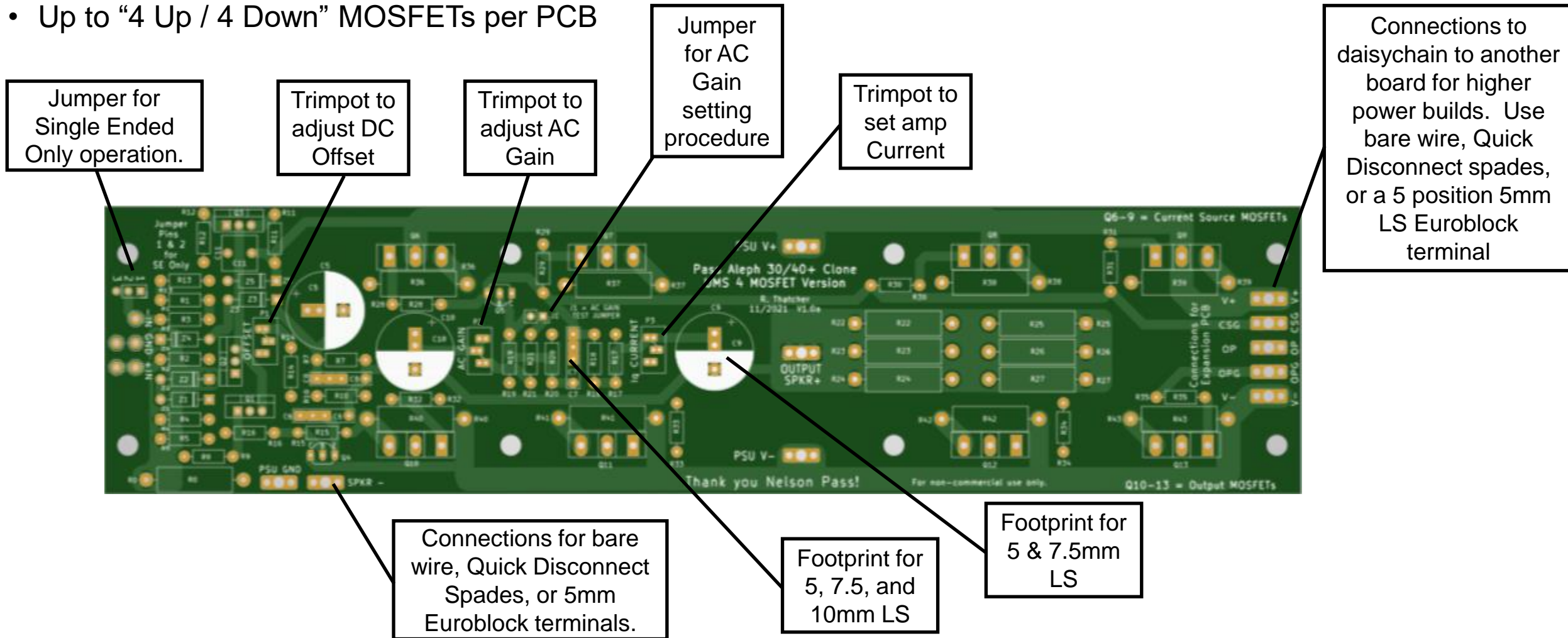
- 1 Pair Amp PCBs: \$13
- Rectifier Snubber PCBs: \$1
- CL-60 / AC Cap Boards: \$1
- “New Original” F5 Dual Rail Decoupled Power Supply PCB: \$10
- V8 CRCRC Dual Rail Power Supply PCB: \$10
- MOSFET Kits based on quantity. IRFP240 and IRF9610 available
- Plus shipping



Classic Aleph for UMS Chassis Group Buy

Amp PCB

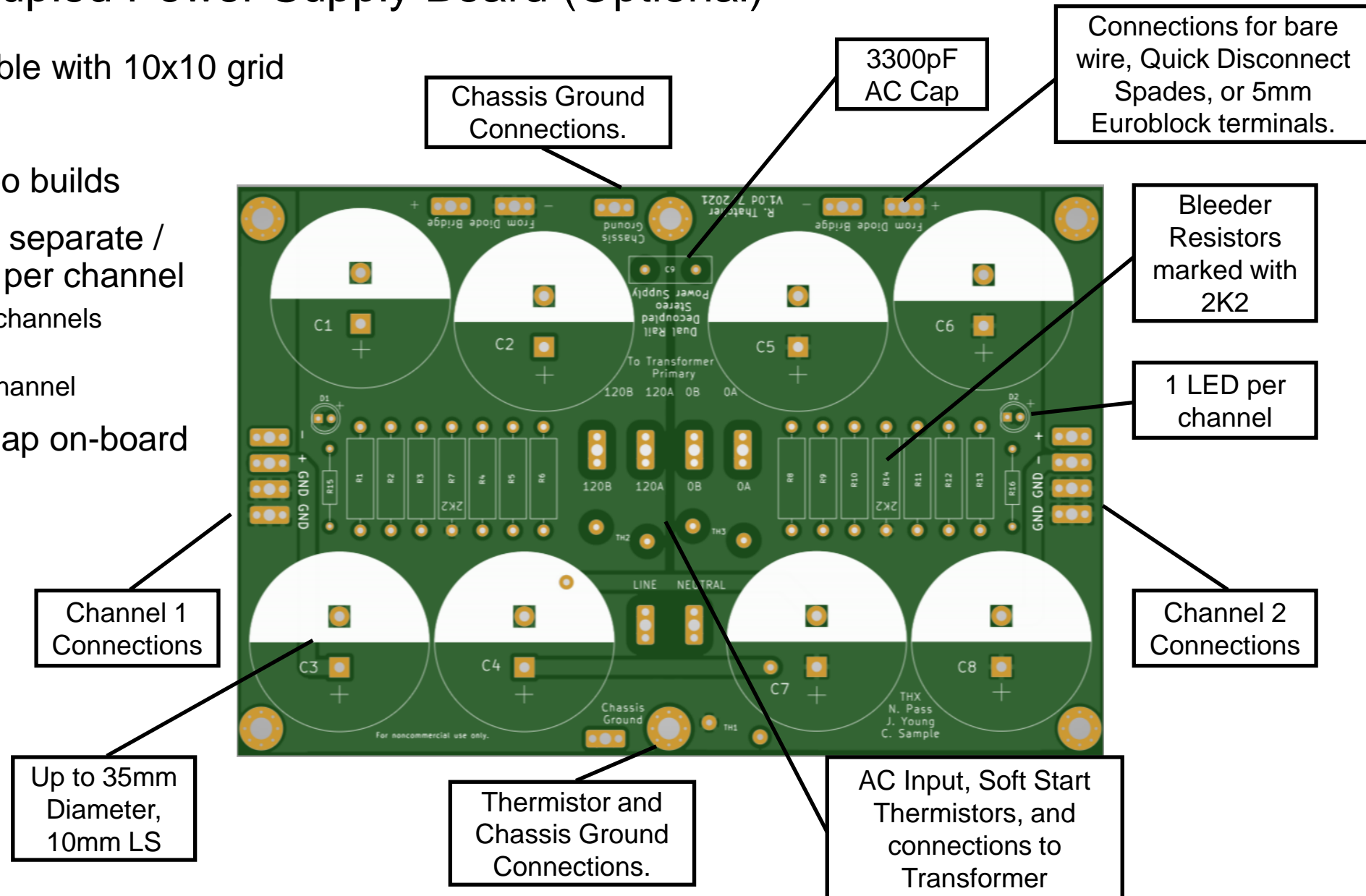
- UMS compatible holes
- 60 x 250mm
- Up to “4 Up / 4 Down” MOSFETs per PCB



Classic Aleph for UMS Chassis Group Buy

Dual Rail Decoupled Power Supply Board (Optional)

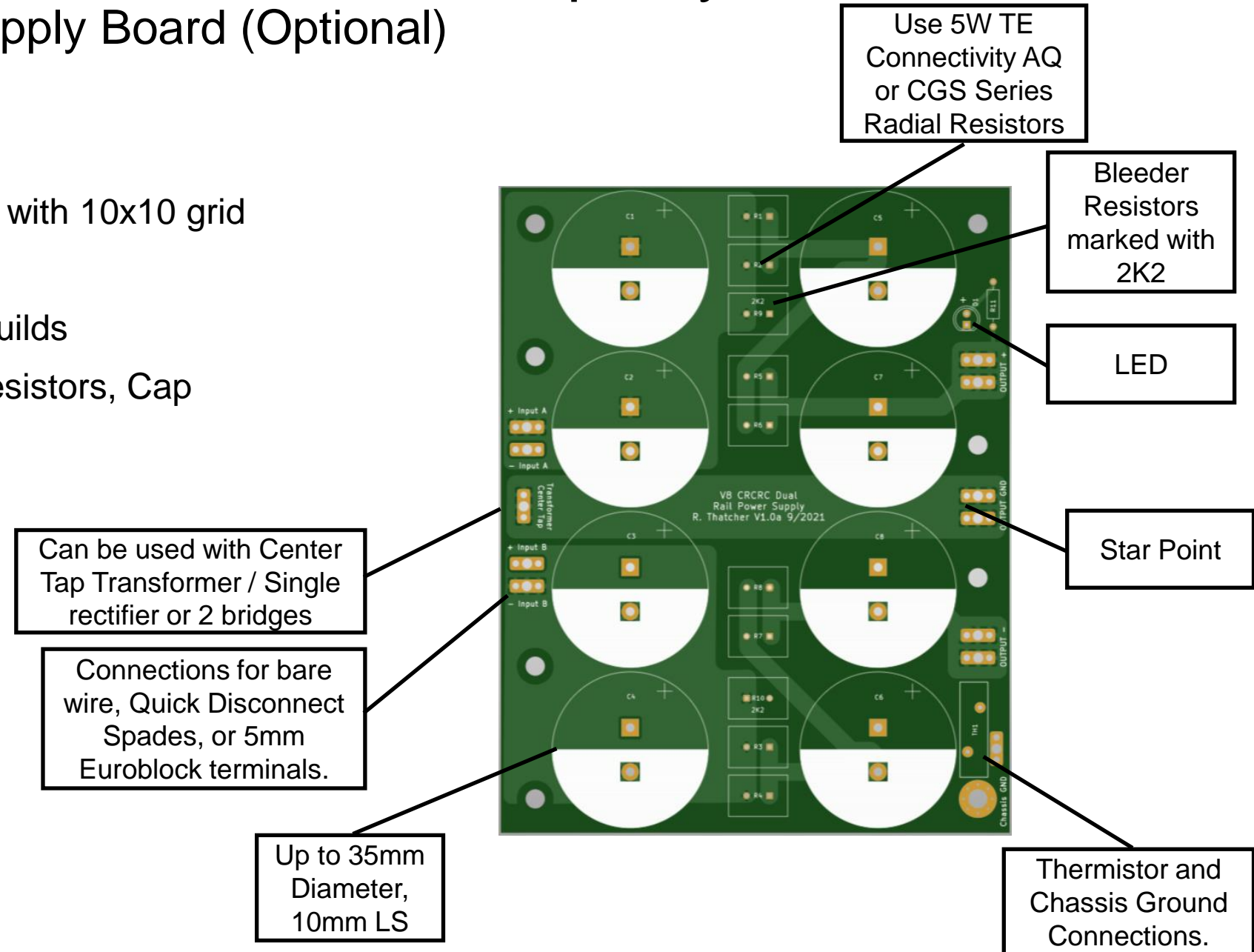
- Mounting holes compatible with 10x10 grid
- 112 x 170mm
- Recommended for stereo builds
- CRC Power Supply with separate / decoupled 2nd cap bank per channel
 - 1st bank of caps for both channels
 - Last bank of caps:
1 cap per rail for each channel
- CL-60 Soft Start & AC Cap on-board



Classic Aleph for UMS Chassis Group Buy

V8 CRCRC Power Supply Board (Optional)

- Mounting holes compatible with 10x10 grid
- 115 x 146mm
- Recommended for mono builds
- 2 Caps, Resistors, Cap, Resistors, Cap

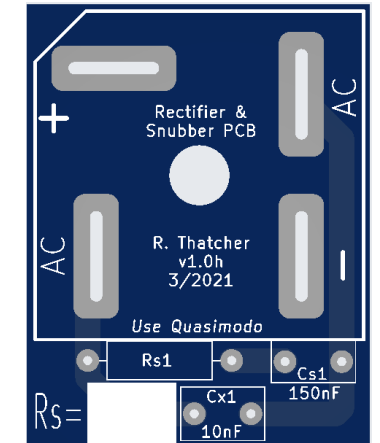


Classic Aleph for UMS Chassis Group Buy

Optional Boards

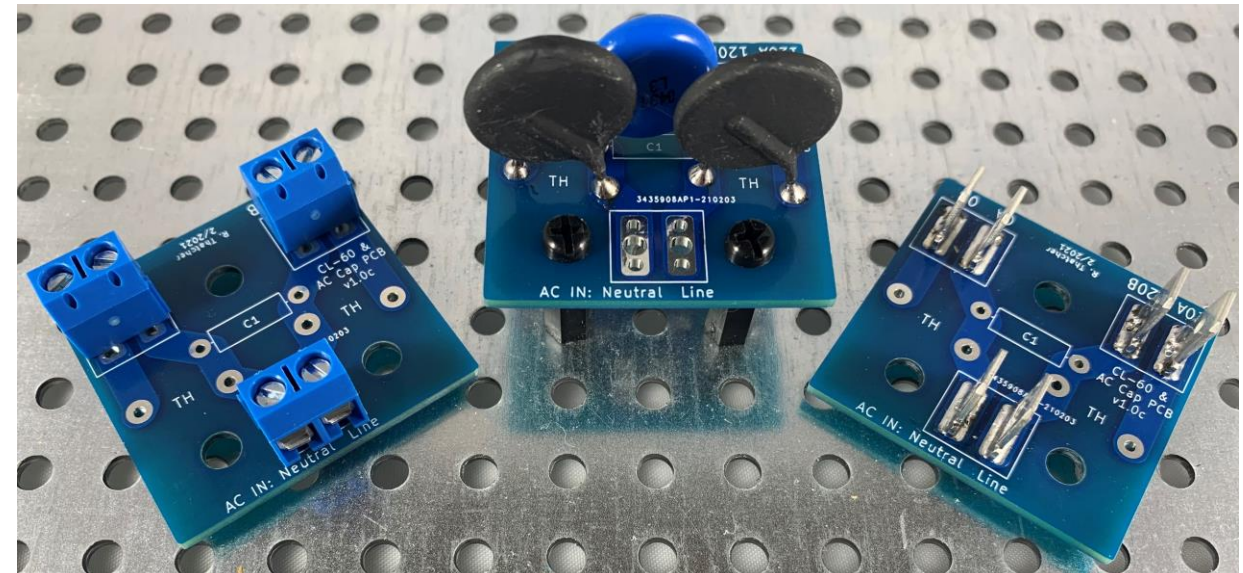
- **Rectifier / Snubber Board**

- Install on diode bridge with snubber resistor and caps
- Use your Quasimodo jig to calculate values based on transformer selection
- Convenient area to mark your Rs value



- **CL-60 / AC Cap board**

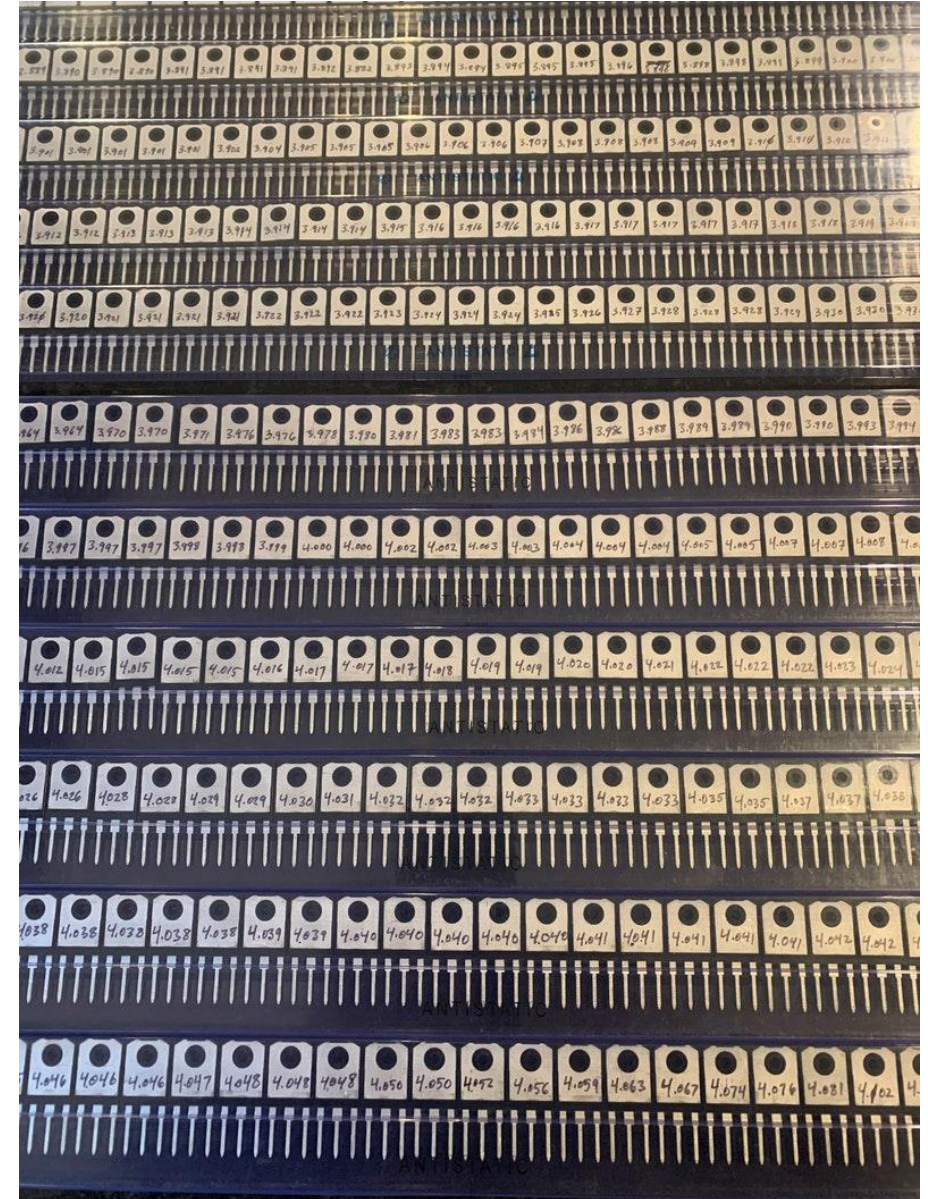
- Use this with V8 CRCRC Power supply board
- CL60 Soft Start circuit and AC filter cap on one board
- Use wire, QD Spades, or Euroblocks



Classic Aleph for UMS Chassis Group Buy

Need Matched MOSFETs?

- **IRPF240, IRF9610 available.**
- **IRFP9240 also available for other projects**
- 240/9240's V_{gs} measured at 170mA
- IRF9610 MOSFETs are matched at 100mA and 16mA
- All are matched in a steady temperature room and with a timer circuit for consistent and precise matching.
- Latest 240/9240 match is from a batch of 900 MOSFETs
Excellent population for great matching!



Classic Aleph for UMS Chassis Group Buy

Tentative schedule

- Group Buy #1 Open: end November 2021
- Group Buy #1 Closed: end December 2021
- Order from PCB Fab: January 2022
- GB Participants send paypal email and shipping details: Early January 2022
- Paypal invoices to GB Participants: Mid-January 2022
- Ship kits: Mid-Late January 2022

Classic Aleph for UMS Chassis Group Buy

Open Items / Need Help

- **Free set of boards for one fearless amp builder who will:**
 - Make an “Aleph 40” with “4-up/4-down” MOSFETs per PCB
 - Figure out component values, rail voltage, recommended transformer model number, etc.
 - Build within “reasonable” time - Done in Q1 2022
 - Share findings & post pictures in DIYAudio
 - Can ship prototype boards ASAP if you’re willing to solder ZTX450 on a tiny footprint. Feeling fearless?
- **Free set of boards for one fearless amp builder who will:**
 - Make an “8-up/8-down” 2xPCB per channel amp. Do we call it the Aleph Turbo?
 - Figure out component values, rail voltage, recommended transformer model number, etc.
 - Build within “reasonable” time - Done in Q1 2022
 - Share findings & post pictures in DIYAudio