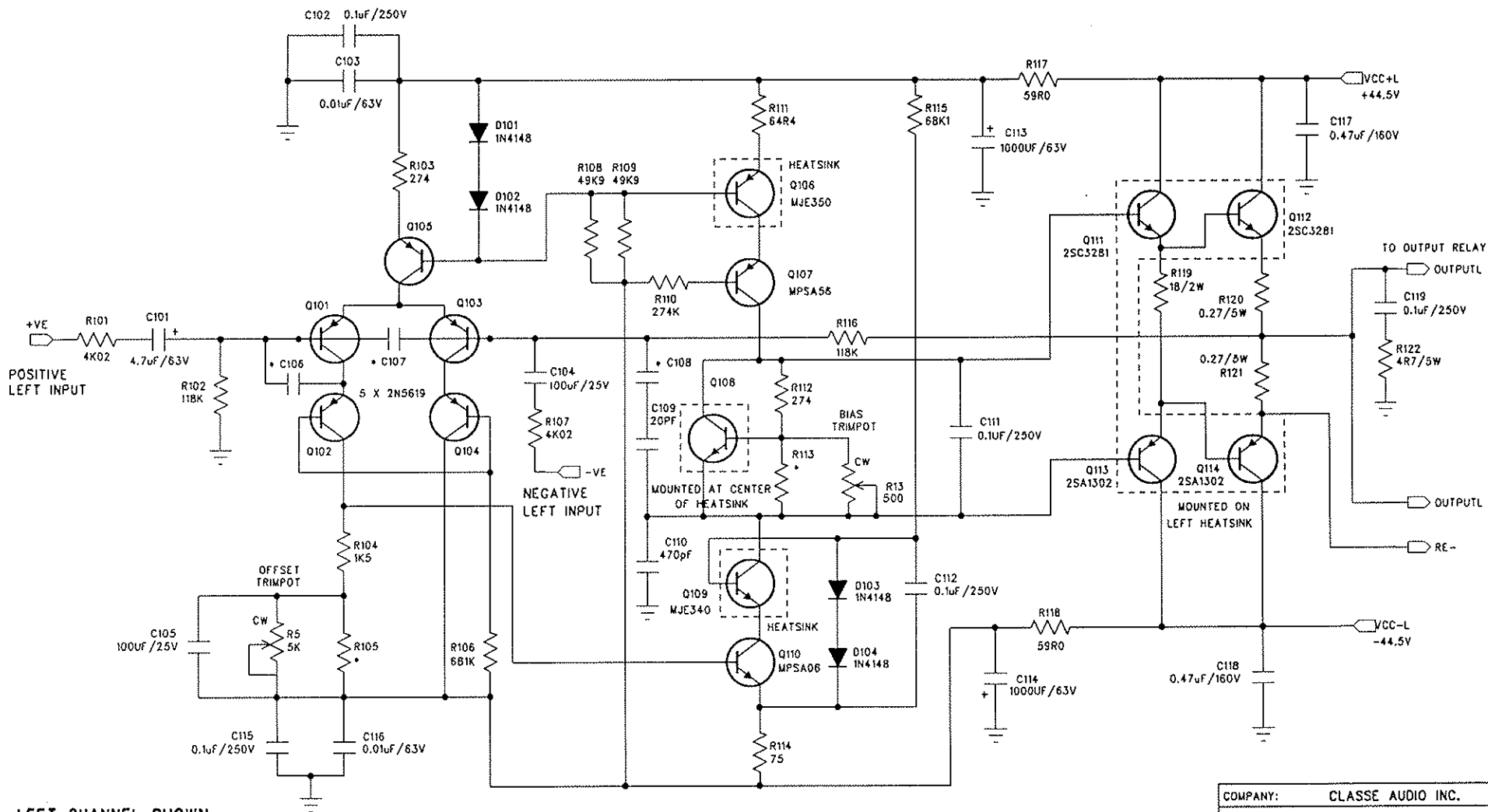


| | | |
|----------------------------------|-----------------|---------------|
| COMPANY: CLASSE AUDIO INC. | | |
| TITLE: CLASSE 70 POWER AMPLIFIER | | |
| DESC: FLOW DIAGRAM | | |
| DRAWING NO: 70DIA | | |
| DRAWN: NVK | DATE: JUNE 8/92 | SHEET: 1 OF 5 |

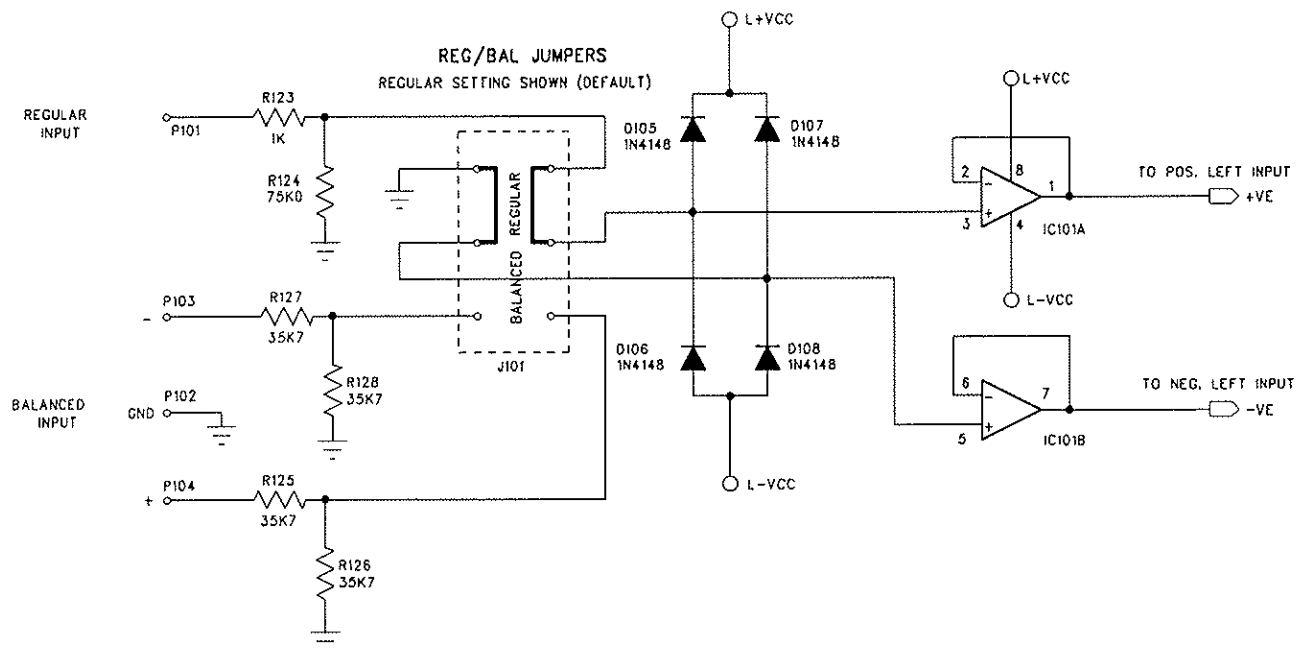


LEFT CHANNEL SHOWN

* = INSTALLED DURING CALIBRATION

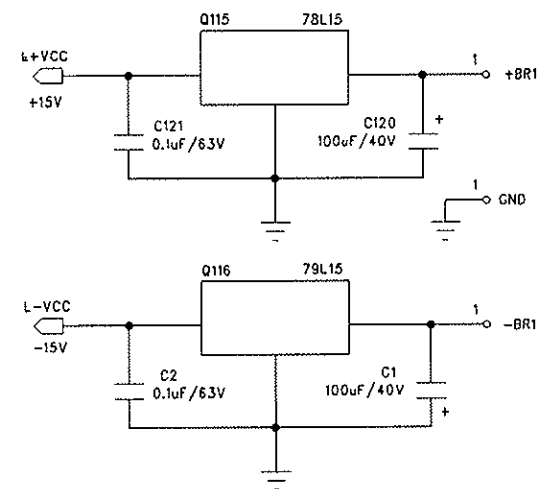
CORRESPONDING PART NAMES ON RIGHT CHANNEL: R2XX, C2XX, D2XX, etc..

| | |
|-------------|---------------------------|
| COMPANY: | CLASSE AUDIO INC. |
| TITLE: | CLASSE 70 POWER AMPLIFIER |
| DESC: | LEFT CHANNEL CIRCUITRY |
| DRAWING NO: | 70PC82 |
| DRAWN: | NVK |
| DATE: | JUN 5/92 |
| SHEET: | 2 OF 5 |



LEFT CHANNEL SHOWN

CORRESPONDING PART NAMES ON RIGHT CHANNEL: R2XX, C2XX, D2XX, etc..



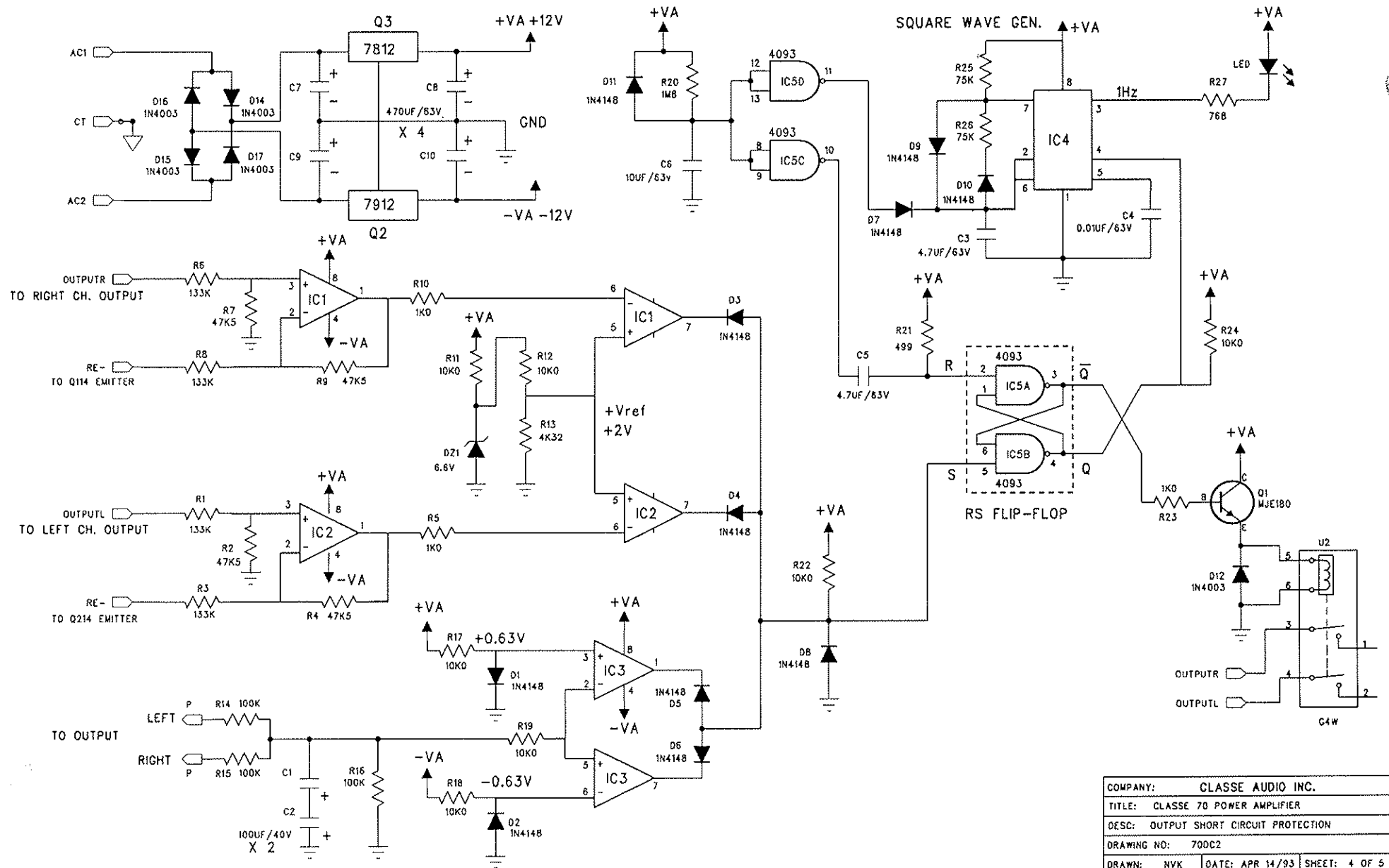
COMPANY: CLASSE AUDIO INC.

TITLE: CLASSE 70 POWER AMPLIFIER

DESC: REG/BAL INPUT BUFFER

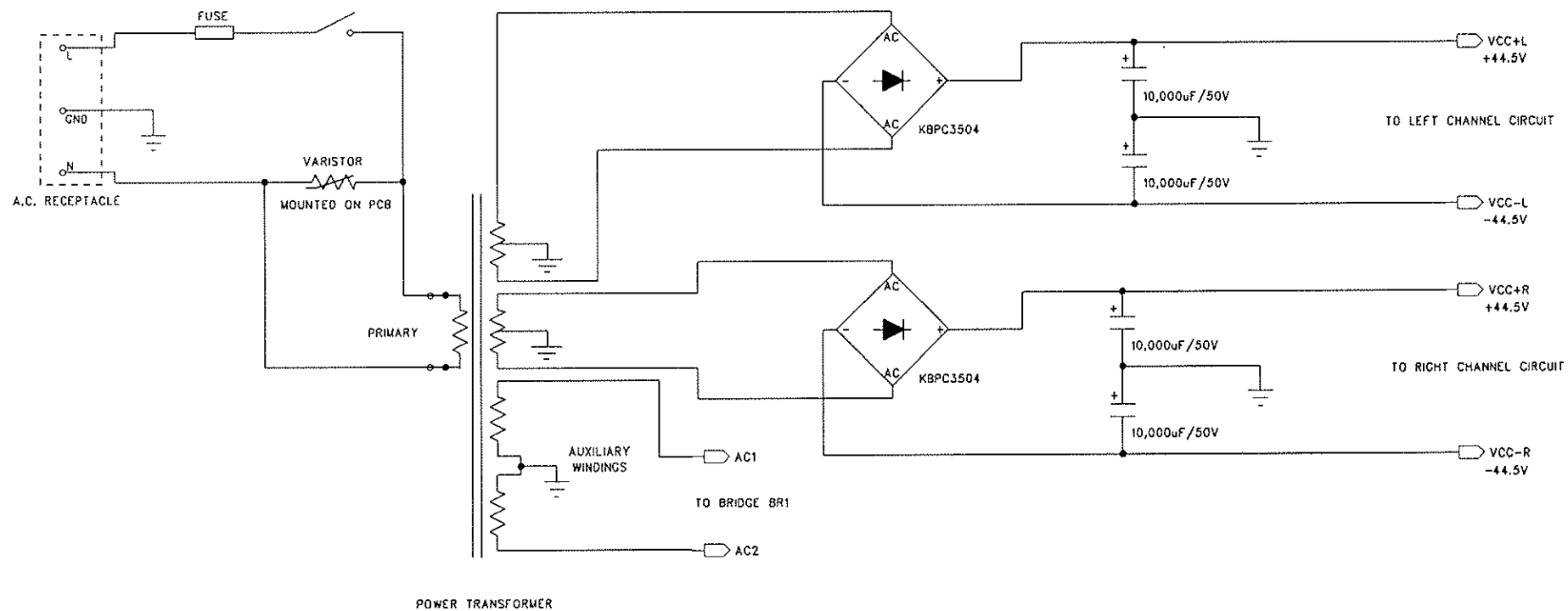
DRAWING NO: 70IP

DRAWN: HVK DATE: JUNE 8/92 SHEET: 3 OF 5



FUSE VALUES:

100-120VAC: 5 AMP SLO-BLO
220-240VAC: 3 AMP SLO-BLO



| | | | |
|-------------|---------------------------|-----------------|---------------|
| COMPANY: | CLASSE AUDIO INC. | | |
| TITLE: | CLASSE 70 POWER AMPLIFIER | | |
| DESC: | MAIN POWER SUPPLY | | |
| DRAWING NO: | 70PS | | |
| DRAWN: | NVK | DATE: JUNE 8/92 | SHEET: 5 OF 5 |

"BIAS FOR OLD MODELS"

DR 9-8 \Rightarrow 18

DR 10-M10 \Rightarrow 21

DR 15-25 - 1/5 1000-700 \Rightarrow 22

CLASSE' 70 \Rightarrow 21

FOR ALL MODELS & IF THE PRE-DRIVER
ARE MOUNTED ON
HEAT SINK USE THE
TOP CORNER TO
FINAL TEST.
(TO SET BIAS+OFFSET)

Classé Audio

INSTRUCTIONS FOR CONVERSION OF CLASSÉ 70 TO NEW OPERATING LINE VOLTAGE

1. Disconnect unit from A.C. line
2. Reconnect all jumpers on voltage selector PCB as shown below, for the desired voltage.

NOTE: the voltage selection section is located at middle front of PCB.

3. Replace the varistor (V1) for new line voltage:

**for 100V to 120V: 221
**for 220V to 240V: 391 or 441

Note: if varistor is not available then remove old varistor and leave it empty.

4. Re-assemble unit.
5. Change fuse according to the owner's manual.

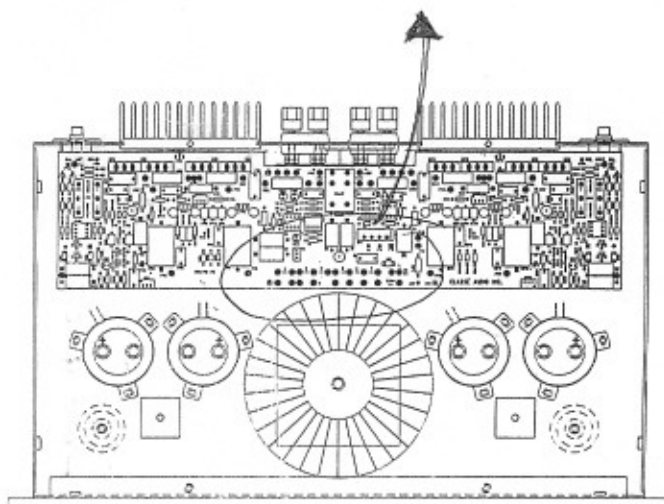
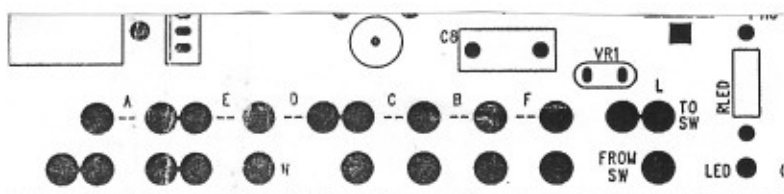
JUMPER CONFIGURATION

LINE VOLTAGE

100
120
220
240

JUMPERS

A, F, E
C, F, D
B, E
B, D



FRONT