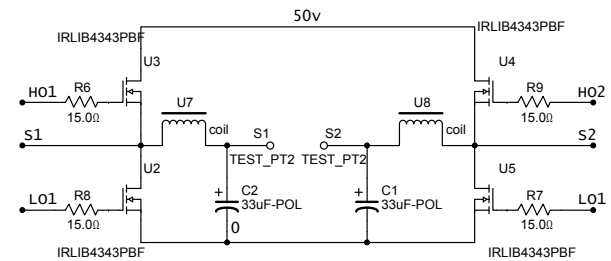
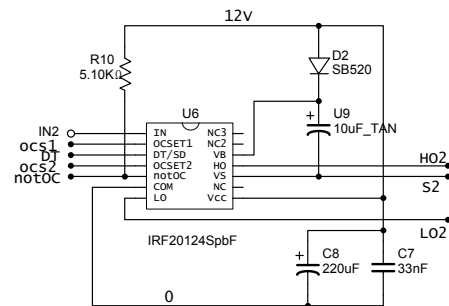
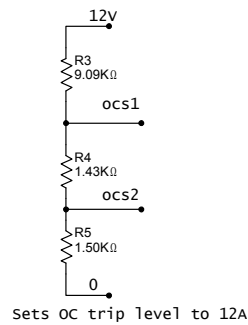
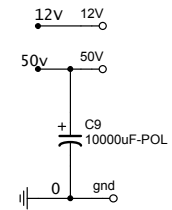
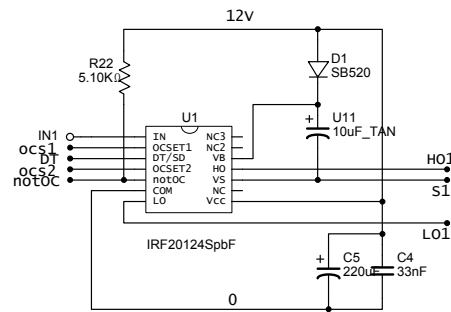
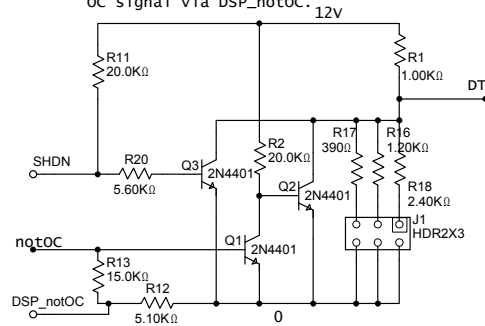
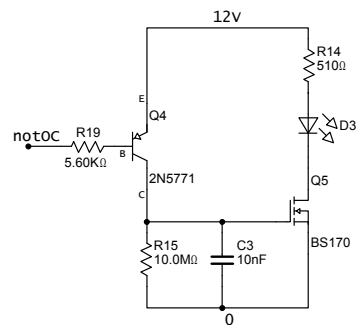


Handles OC event and shuts down drivers.
DT selectable via J1.
DSP can shutdown drivers via SHDN and gets
OC signal via DSP_notOC.



LC filter 2nd order with $L=35\mu\text{H}$
and $C=33\mu\text{F}$ Tantal electrolytic.
 $f_3=7.2\text{kHz} \rightarrow -42\text{dB}$ @ 50kHz fswitch
with Peerless XLS 12" 40hm load



Over-current LED delay circuit,
keeps the LED on for atleast 200ms
if OC triggered

Title: classDNew		
Complete output stage including output LP filter		
Designed by: Fredrik Smitt	Document N: 0001	Revision: 1.0
Checked by: ss	Date: 2007-03-13	Size: A0
Approved by:	Sheet 1 of 1	