

[Home](#)
[About Us](#)
[Privacy Policy](#)
[Terms Of Use](#)
[Disclaimer](#)
[Sitemap](#)

8+1

## Audio Circuits

Audio circuits include audio related circuits like amplifiers, music circuits and other sound generating circuits. Audio amplifiers, hi-fi, mixers, etc

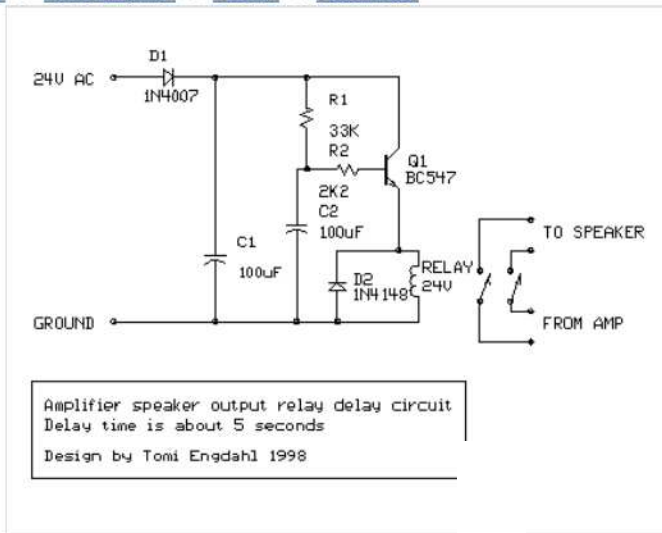
[Circuit Board?](#)
[www.key-electronica.nl](http://www.key-electronica.nl)

Key Electronica Weesp Producent Electronica &amp; Halfbr.

[AdChoices](#)
[Circuit Design](#)
[Circuit Diagram](#)
[Audio Amplifier](#)
[LED Circuit](#)

Monday, October 17, 2011

### Audio Amplifier Circuit Output Relay Delay Audio

 Labels: [audio](#) >> [Audio Amplifier](#) >> [circuits](#) >> [schematics](#)


Amplifier Circuit Output Relay Delay

This is a simple circuit which I built to one of my audio amplifier projects to control the speaker output relay. The purpose of this circuit is to control the relay which turns on the speaker output relay in the audio amplifier. The idea of the circuit is to wait around 5 seconds after the power up until the speakers are switched to the amplifier output to avoid annoying "thump" sound from the speakers. Another feature of this circuit is that it disconnects the speaker immediately when the power in the amplifier is cut off, so avoiding sometimes nasty sounds when you turn the equipment off.

[www.andesmountain.cl](http://www.andesmountain.cl)

### W Circuit 7 and 5 days

W Circuit Torres del Paine, Chile.  
Regular and custom trips

Output Relay Delay Audio Amplifier Circuit\_Component list

C1 100 uF 40V electrolytic

C2 100 uF 40V electrolytic

D1 1N4007

D2 1N4148

Q1 BC547

R1 33 kohm 0.25W

R2 2.2 kohm 0.25W

RELAY 24V DC relay, coil resistance &gt;300 ohm

Circuit operation

Then power is applied to the power input of the circuit, the positive phase of AC voltage charges C1. Then C2 starts to charge slowly through R1. When the voltage in C2 rises, the emitter output voltage of Q1 rises together with voltage on C2. When the output voltage of Q1 is high enough (typically around 16..20V) the relay goes to on state and the relay switches connect the speakers to the amplifier output. It takes typically around 5 seconds after power up until the relay starts to conduct (at absolute time depends on the size of C2, relay voltage and circuit input voltage).

When the power is switched off, C1 will lose its energy quite quickly. Also C2 will be charged quite quickly through R2. In less than 0.5 seconds the speakers are disconnected from the amplifier output.

Notes on the circuit

This circuit is not the most accurate and elegant design, but it has worked nicely in my small homebuilt PA amplifier. This circuit can be also used in many other applications where a turn on delay of few seconds is needed. The delay time can be increased by using bigger C2 and decreased by using a smaller C2 value. Note that the delay is not very accurate because of simplicity of this circuit and large tolerance of typical electrolytic capacitors (can be -20%..+50% in some capacitors).

[New Electronic Circuit](#)
[Schematic TDA7294 DC Servo Amplifier current negative feedback Circuit Diagrams](#)

#### Circuit Archive

▶ 2012 (19)

▼ 2011 (281)

▶ December (28)

▶ November (30)

▼ October (28)

[Schematic Diagram Class-A Power Amplifier circuit ...](#)
[Schematic Diagram 250mW 16-dB VHF amplifier circuit...](#)
[Schematic Diagram RD15HVF1 RF amplifier electronic...](#)
[Schematic Diagram 250mW FM transmitter electronic ...](#)
[Schematic Diagram ADF-4007 6.7GHz Local oscillator...](#)
[Schematic Diagram TA8122 AM-FM radio receiver circ...](#)
[Schematic Diagram LM1596](#)
[AdChoices](#)
[▶ Stereo Audio Amplifier](#)
[▶ Complete Circuit Diagram](#)
[▶ Power Supply Circuit](#)

#### Subscribe To

Posts

Comments

#### GET FREE DAILY FRESH CIRCUITS

BY FEEDBURNER

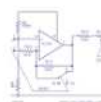
Enter your email address:

Subscribe

Circuit Electronics Design

The feed providing these headlines is not available.

#### Popular Circuit


[Subwoofer Filter Circuit Using Op-Amp TL072](#)

Here is a simple subwoofer filter circuit that can be powered by a 12V DC. This circuit is very useful in automotive applications subwoofer....


[Schematic Diagram 100W 2x LM3886 Audio Power Amplifier](#)

This audio amplifier designed uses two LM3886 per channel, in parallel circuit, based on the PA100 parallel amplifier detailed in Nationa...

Labels

[Schematic Single microcontroller based 12v to 230v inverter with intelligent battery charging Circuit Diagrams](#)  
[Schematic Basic Theory on AVR Timer0 Circuit Diagrams](#)

 Recommend this on Google

No comments:

Post a Comment

Enter your comment...

Comment as:

Publish

Preview

☐ Notify me

- 1
- [12 volt Amplifier](#)
- [12v battery charger circuit](#)
- [200 WATT AUDIO AMPLIFIER](#)
- [250mW 16-dB VHF amplifier circuit](#)
- [250mW FM transmitter electronic circuit](#)
- [6922 Tube Pre-Amplifier](#)
- [6C45Pi](#)
- [7 segment](#)
- [Adaptor](#)

[Newer Post](#)

[Home](#)

[Older Post](#)

Subscribe to: [Post Comments \(Atom\)](#)

[Circuit](#) | [Audio](#) | [Video](#) | [RF](#) | [Homebrew](#) | [Sensors](#) | [Microcontroler](#) | [Power Supply](#)