

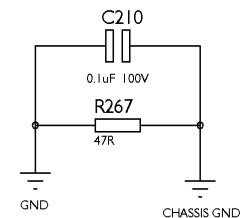
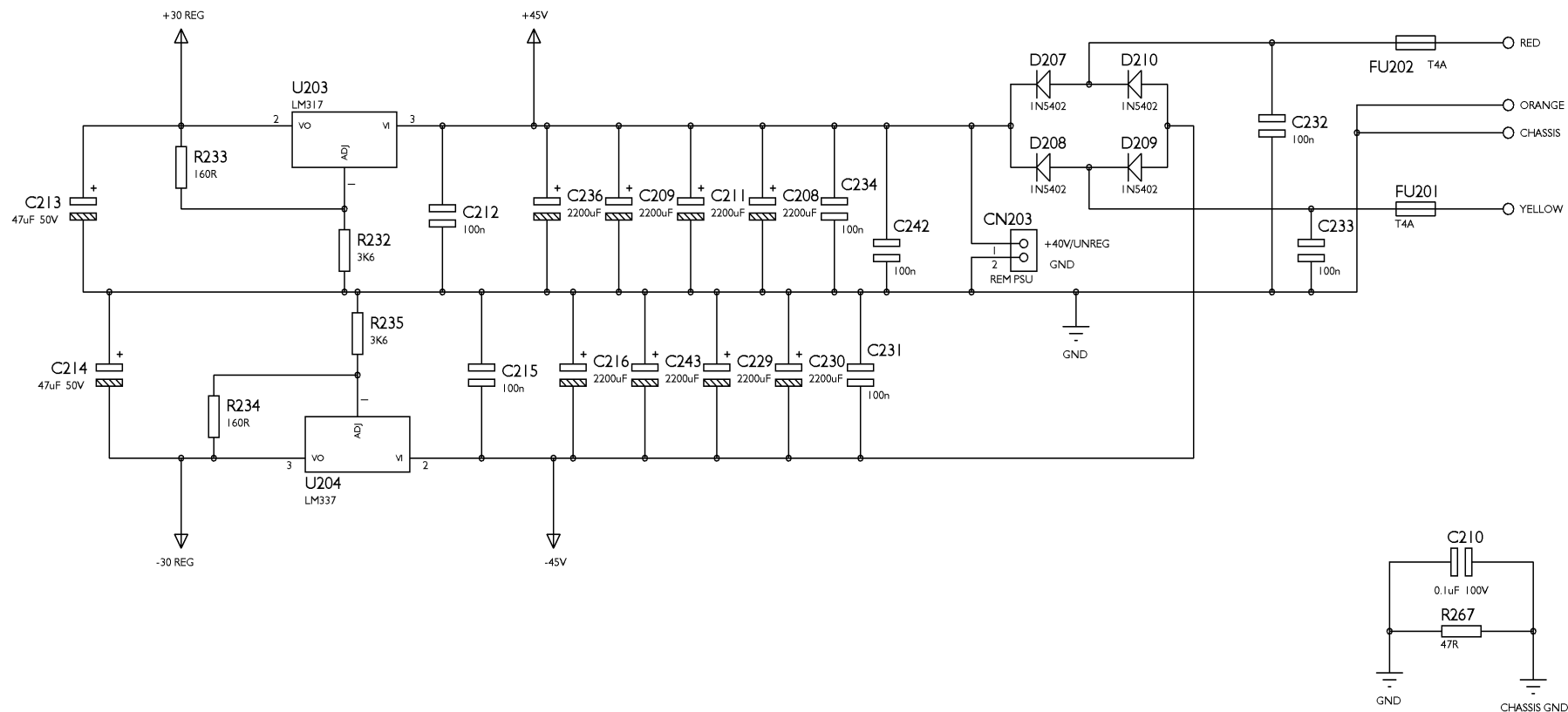
**A500**

**Integrated  
Amplifier**

**Schematics & Bill of  
Materials**

**ADDITIONS**

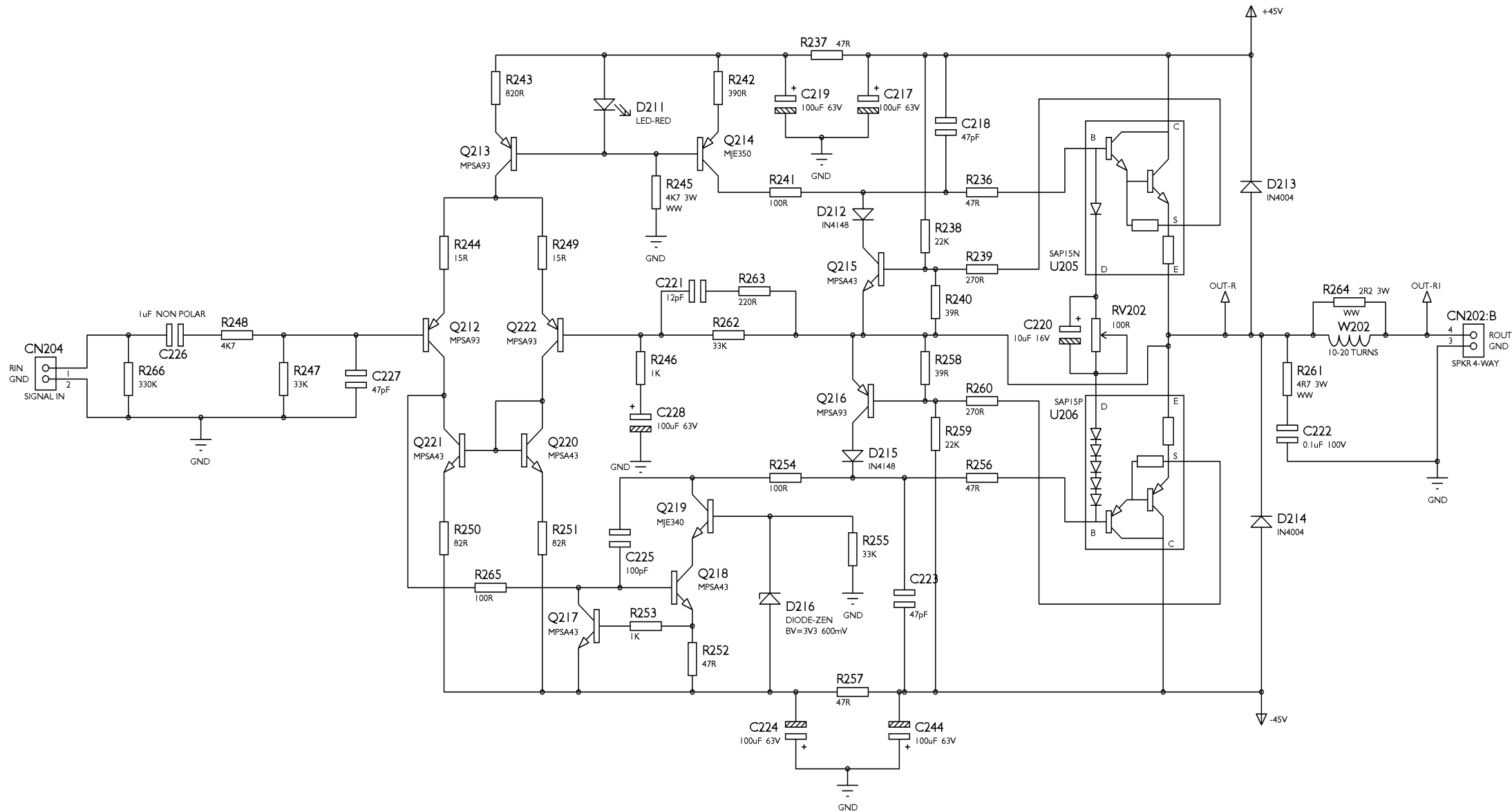
FACTORY PART NO	DRAWING NO	DESCRIPTION	QTY	COMMENTS
	API1727/1	A500/s OWNERS' CERTIFICATE	1	
	API1655/2	A500/s CARTON LABEL (MODEL NO.)	1	FOR BOX
	API0209/1	CAMBRIDGE SELECTOR KNOB MK3	4	TO BE SPRAYED SILVER (PAINT SPEC AS APPROVED BY STEPHEN YEUNG)
	API0208/1	CAMBRIDGE VOLUME KNOB MK2	1	TO BE SPRAYED SILVER (PAINT SPEC AS APPROVED BY STEPHEN YEUNG)
6040-010103-000	API0028/1	CAMBRIDGE POWER KNOB	3	TO BE SPRAYED SILVER (PAINT SPEC AS APPROVED BY STEPHEN YEUNG)
6510-150241-000		AI TOP COVER (MODIFIED)	1	MODIFIED TO DRAWING API0019/3, COLOUR SPEC AS PER ESRI349
		A500/s FRONT PANEL (PUNCHED AND PRINTED)	1	PRINTED WITH ARTWORK API1626/2 AND API1647/2
	API0269/2	AMPLIFIER FRONT PANEL WITH RC & TD	1	FINISH AS PER ESRI363
		A500RC REAR PANEL (PRINTED)	1	PRINTED WITH ARTWORK NO. API0294/1
	API0276/1	AMPLIFIER REAR PANEL WITH IEC, 8RCA, 2 SPKR	1	FINISH AS PER ESRI349
	API0246/5	CAMBRIDGE CLEAR REMOTE EYE	1	
		INFRARED SENSOR SBX1910-52	1	NOT TO BE COLOURED BLACK
		BLUE POWER LED		APPROVED SAMPLE ESRI337
7003-006001-111		SCREW M3X6 S.T.P. B/H (SILVER)	9	TOP COVER TO REAR PANEL X2/REAR PANEL TO BASE X7/
7003-006001-131		SCREW M3X6 S.T.P. PW/H (SILVER)	4	TOP COVER TO BASE (L& R) X4, AS PER ESRI359
		BOLT M3x10 B/H	2	IEC TO REAR PANEL
7003-008002-111		SCREW M3X8 P.T.P. B/H (SILVER)	10	SPEAKER TERMINAL TO REAR PANEL X6/RCA TERMINAL TO REAR PANEL X4
<b>SUBTRACTION</b>				
	API0463/1	A500RC OWNERS' CERTIFICATE	1	
	API0281/1	A500RC CARTON LABEL (MODEL NO.)	1	FOR BOX
	API0209/1	CAMBRIDGE SELECTOR KNOB MK3	4	
	API0208/1	CAMBRIDGE VOLUME KNOB MK2	1	
6040-010103-000	API0028/1	CAMBRIDGE POWER KNOB	3	
6510-150241-000		AI TOP COVER (MODIFIED)	1	MODIFIED TO DRAWING API0019/3
6510-150241-000-XXXX	CAMA107D	AI TOP COVER	1	
	API0304/2	AMPLIFIER SUB-PANEL WITH TD & RC	1	
		A500RC FRONT PANEL (PUNCHED AND PRINTED)	1	PRINTED WITH ARTWORK API0286/1, API0287/1
	API0269/2	AMPLIFIER FRONT PANEL WITH RC & TD	1	
		A500RC REAR PANEL (PRINTED)	1	PRINTED WITH ARTWORK NO. API0294/1
	API0276/1	AMPLIFIER REAR PANEL WITH IEC, 8RCA, 2 SPKR	1	
	API0246/4	CAMBRIDGE REMOTE EYE	1	
		INFRARED SENSOR SBX1910-52	1	
		LED TRI-COLOUR (ORANGE/RED/GREEN) 3mm	1	PIN-OUT AS PER API0451/1
7003-006001-111		SCREW M3X6 S.T.P. B/H (SILVER)	9	TOP COVER TO REAR PANEL X2/REAR PANEL TO BASE X7/
7003-006001-131		SCREW M3X6 S.T.P. PW/H (BLK)	4	TOP COVER TO BASE (L& R) X4
		BOLT M3x10 B/H	2	IEC TO REAR PANEL
7003-008002-111		SCREW M3X8 P.T.P. B/H (SILVER)	10	SPEAKER TERMINAL TO REAR PANEL X6/RCA TERMINAL TO REAR PANEL X4



GENERAL NOTES

- 1.
- 2.
- 3.
- 4.
- 5.

DRAWING TITLE SAPI 5N/P POWER AMP		DRAWN BY NF	
SHEET TITLE POWER SUPPLY		DATE 29/12/98	
DRAWING No. API0687/2	PAGE 1/3	CHECKED BY	



© COPYRIGHT

**The Audio Partnership**  
 Gallery Court  
 Hankey Place  
 LONDON SE1 4BB  
 Tel : +44 (0)171 940 2200  
 Fax : +44 (0)171 940 2233

GENERAL NOTES

1. WW - WIREWOUND
2. 22 SWG TINNED COPPER WIRE FOR W101
- 3.
- 4.
- 5.

DRAWING TITLE  
**SAPI 5N/P POWER AMP**

DRAWN BY  
**NF**

SHEET TITLE  
**RIGHT CHANNEL**

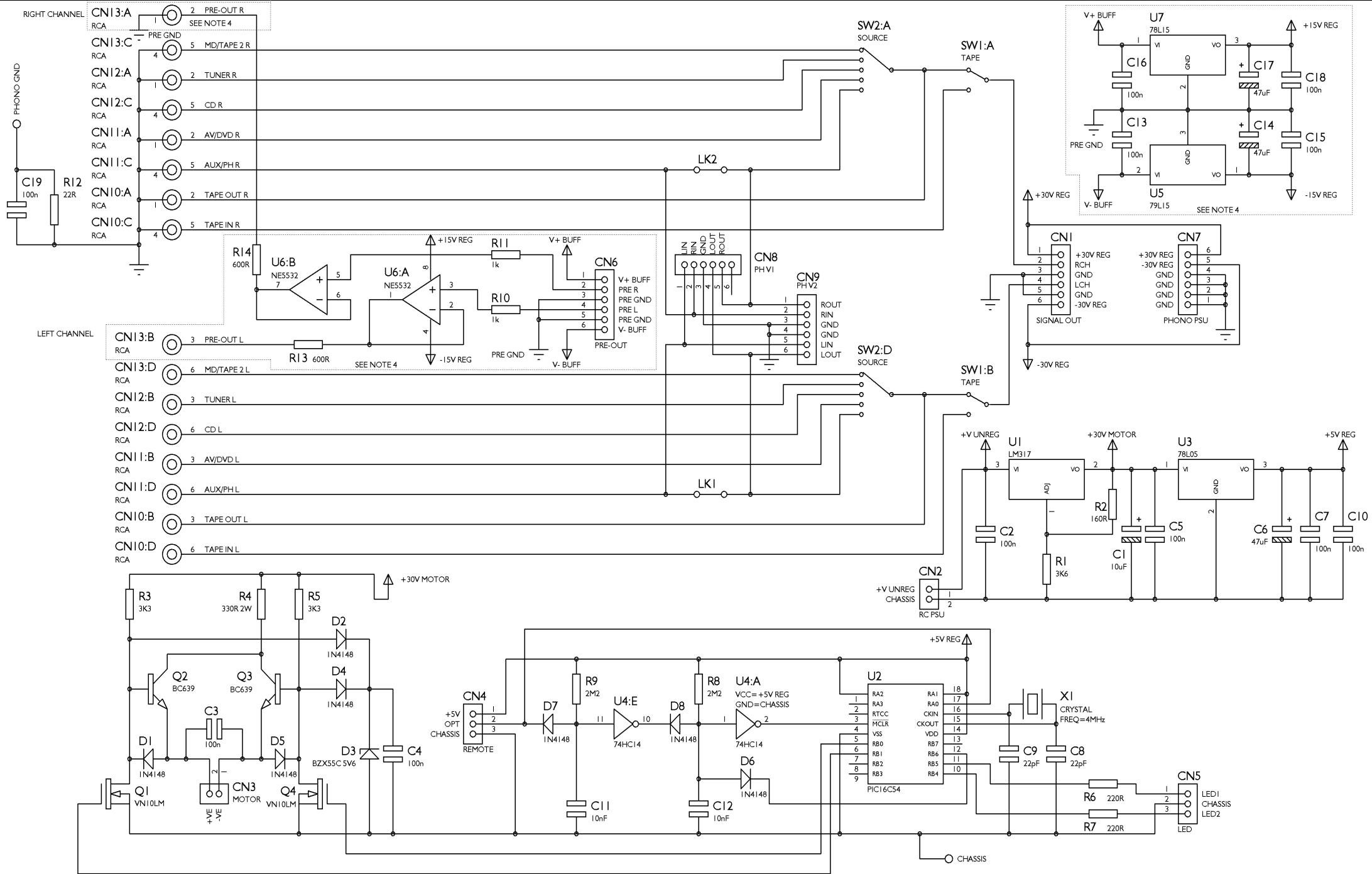
DATE  
**29/12/98**

DRAWING No.  
**API0687/2**

PAGE  
**2/3**

CHECKED BY

CHECKED BY \_\_\_\_\_



© COPYRIGHT

**The Audio Partnership**

Gallery Court  
Hankey Place  
LONDON SE1 4BB

Tel : +44 (0)171 940 2200  
Fax : +44 (0)171 940 2233

#### GENERAL NOTES

1. CN6 FOR V1 OPTIONAL PHONO STAGE
2. CN5 FOR V2 OPTIONAL PHONO STAGE
3. CUT LINKS 1 & 2 WHEN FITTING PHONO STAGE
4. COMPONENTS NOT FITTED IN POP REV B
- 5.

DRAWING TITLE

INPUT PCB WITH PRE-OUT AND R/C

DRAWN BY

NF

SHEET TITLE

COMPLETE PCB

DATE

31/07/98

DRAWING No.

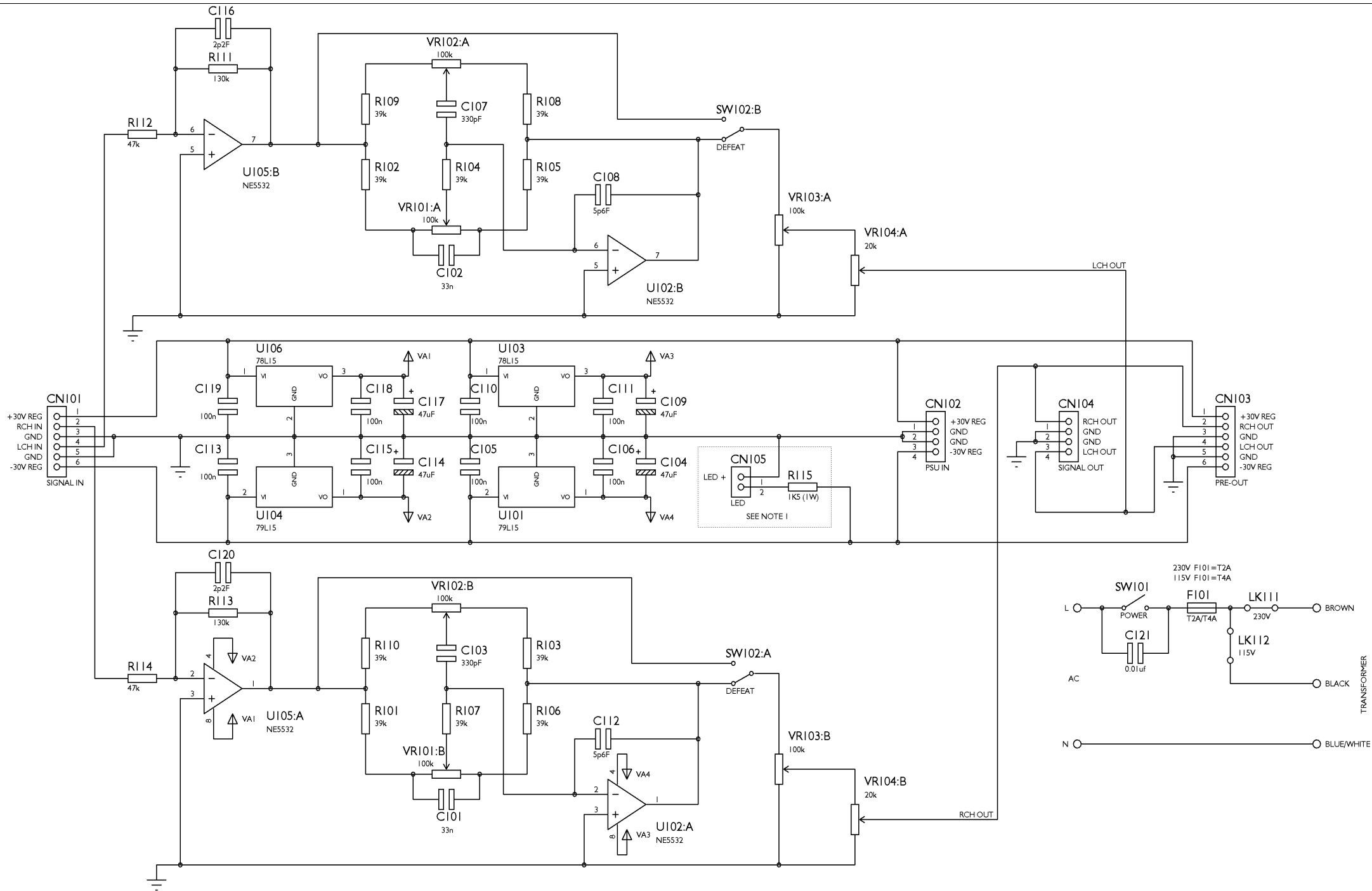
API0261/2

PAGE

1/1

CHECKED BY

6



© COPYRIGHT

The Audio Partnership

Gallery Court  
Hanky Place  
LONDON SE1 4BB

Tel : +44 (0)171 940 2200  
Fax : +44 (0)171 940 2233

# GENERAL NOTES

1. CN105/R115 NOT FITTED TO RC PRODUCTS
- 2.
- 3.
- 4.
- 5.

## DRAWING TITLE

TONE PCB WITH TONE DEFEAT

## SHEET TITLE

COMPLETE PCB

## DRAWING No.

AP10230/3

## PAGE

1/1

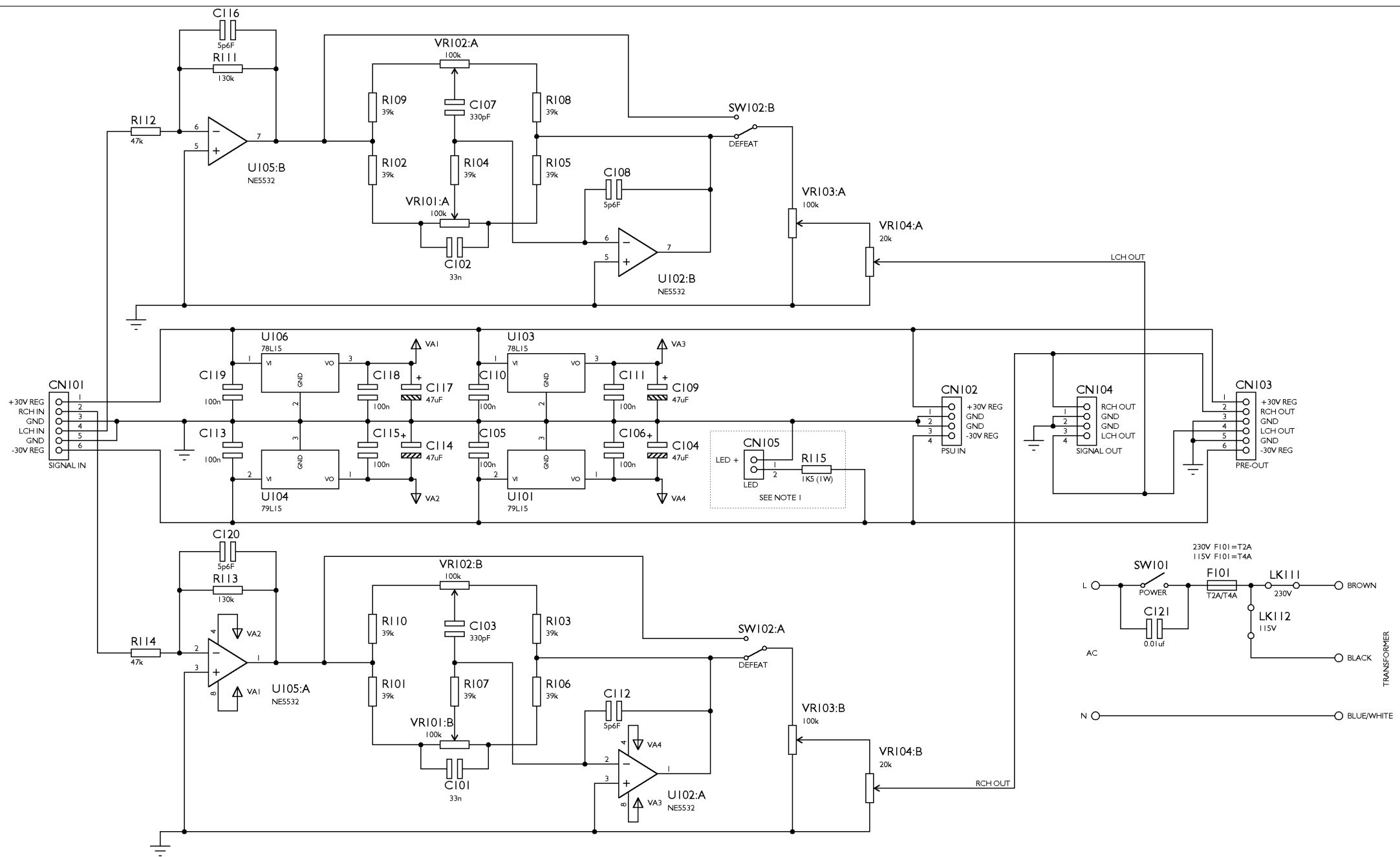
## DRAWN BY

NF

## DATE

08/09/98

## CHECKED BY



© COPYRIGHT

The Audio Partnership

Gallery Court  
Hankey Place  
LONDON SE1 4BB

Tel : +44 (0)171 940 2200  
Fax : +44 (0)171 940 2233

#### GENERAL NOTES

1. CN105/R115 NOT FITTED TO RC PRODUCTS
- 2.
- 3.
- 4.
- 5.

DRAWING TITLE  
TONE PCB WITH TONE DEFEAT

SHEET TITLE  
COMPLETE PCB

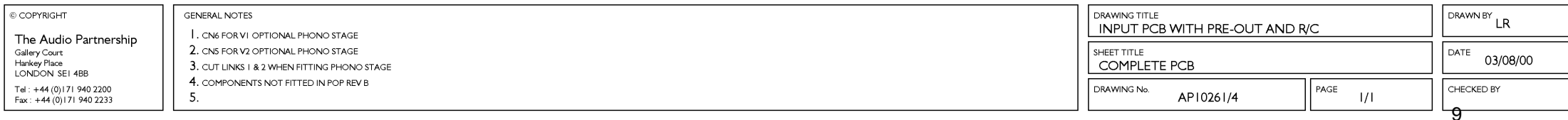
DRAWING No. AP10230/1

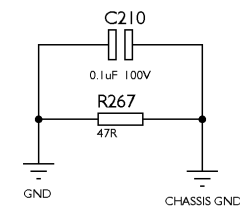
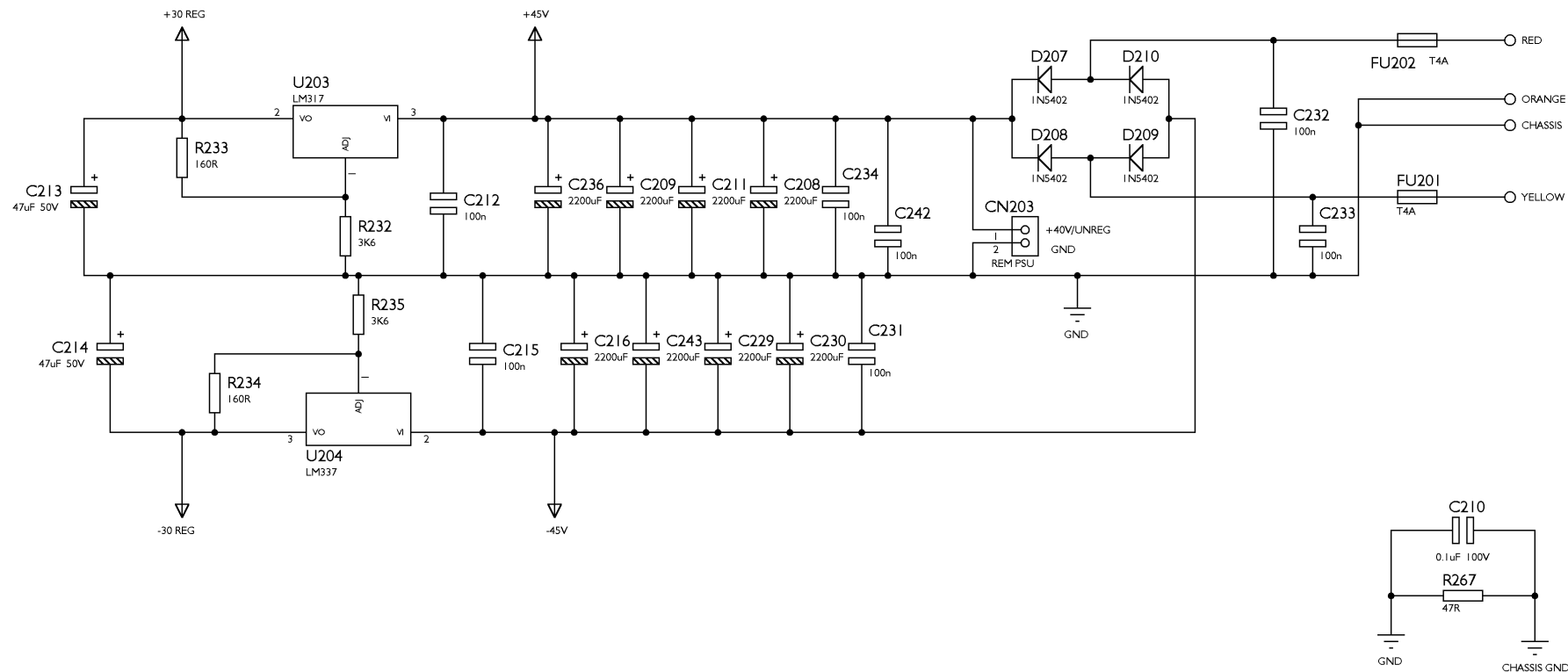
PAGE 1/1

DRAWN BY NF

DATE 11/06/98

CHECKED BY





<p>© COPYRIGHT</p> <p>The Audio Partnership</p> <p>Gallery Court Hankey Place LONDON SE1 4BB</p> <p>Tel : +44 (0)171 940 2200 Fax : +44 (0)171 940 2233</p>	<p>GENERAL NOTES</p> <p>1.</p> <p>2.</p> <p>3.</p> <p>4.</p> <p>5.</p>	<table><tr><td colspan="2">DRAWING TITLE</td><td>DRAWN BY</td></tr><tr><td colspan="2">SAPI 5N/P POWER AMP</td><td>SC</td></tr><tr><td colspan="2">SHEET TITLE</td><td>DATE</td></tr><tr><td colspan="2">POWER SUPPLY</td><td>11/30/99</td></tr><tr><td>DRAWING No.</td><td>PAGE</td><td>CHECKED BY</td></tr><tr><td>API0687/3</td><td>1/3</td><td></td></tr></table>	DRAWING TITLE		DRAWN BY	SAPI 5N/P POWER AMP		SC	SHEET TITLE		DATE	POWER SUPPLY		11/30/99	DRAWING No.	PAGE	CHECKED BY	API0687/3	1/3	
DRAWING TITLE		DRAWN BY																		
SAPI 5N/P POWER AMP		SC																		
SHEET TITLE		DATE																		
POWER SUPPLY		11/30/99																		
DRAWING No.	PAGE	CHECKED BY																		
API0687/3	1/3																			

**A500 - A500/s BOM DIFFERENCES**
**API1759/I - Additions**

27/11/0015:37

LEVEL	YANION PART NO	DRAWING NO	DESCRIPTION	QTY	DESIGNATOR	COMMENTS
..1		API1727/I	A500/s OWNERS' CERTIFICATE	1		
..1		API1655/2	A500/s CARTON LABEL (MODEL NO.)	1		FOR BOX
..2		API0209/I	CAMBRIDGE SELECTOR KNOB MK3	4		TO BE SPRAYED SILVER (PAINT SPEC AS APPROVED BY STEPHEN YEUNG)
..2		API0208/I	CAMBRIDGE VOLUME KNOB MK2	1		TO BE SPRAYED SILVER (PAINT SPEC AS APPROVED BY STEPHEN YEUNG)
..2	6040-010103-000	API0028/I	CAMBRIDGE POWER KNOB	3		TO BE SPRAYED SILVER (PAINT SPEC AS APPROVED BY STEPHEN YEUNG)
..2	6510-150241-000		AI TOP COVER (MODIFIED)	1		MODIFIED TO DRAWING API0019/3, COLOUR SPEC AS PER ESR1349
..2			A500/s FRONT PANEL (PUNCHED AND PRINTED)	1		PRINTED WITH ARTWORK API1626/2 AND API1647/2
...3		API0269/2	AMPLIFIER FRONT PANEL WITH RC & TD	1		FINISH AS PER ESR1363
..2			A500RC REAR PANEL (PRINTED)	1		PRINTED WITH ARTWORK NO. API0294/I
...3		API0276/I	AMPLIFIER REAR PANEL WITH IEC, 8RCA, 2 SPKR	1		FINISH AS PER ESR1349
...3		API0246/5	CAMBRIDGE CLEAR REMOTE EYE	1		
...4			INFRARED SENSOR SBX1910-52	1		NOT TO BE COLOURED BLACK
			BLUE POWER LED			APPROVED SAMPLE ESR1337
..2	7003-006001-111		SCREW M3X6 S.T.P. B/H (SILVER)	9		TOP COVER TO REAR PANEL X2/REAR PANEL TO BASE X7/
..2	7003-006001-131		SCREW M3X6 S.T.P. PW/H (SILVER)	4		TOP COVER TO BASE (L&R) X4, AS PER ESR1359
..2			BOLT M3x10 B/H	2		IEC TO REAR PANEL
..2	7003-008002-111		SCREW M3X8 P.T.P. B/H (SILVER)	10		SPEAKER TERMINAL TO REAR PANEL X6/RCA TERMINAL TO REAR PANEL X4

**A500 - A500/s BOM DIFFERENCES**
**API1759/I - Subtractions**

27/11/00 16:31

LEVEL	YANION PART NO	DRAWING NO	DESCRIPTION	QTY	DESIGNATOR	COMMENTS
..1		API0463/1	A500RC OWNERS' CERTIFICATE	1		
..1		API0281/1	A500RC CARTON LABEL (MODEL NO.)	1		FOR BOX
..2		API0209/1	CAMBRIDGE SELECTOR KNOB MK3	4		
..2		API0208/1	CAMBRIDGE VOLUME KNOB MK2	1		
..2	6040-010103-000	API0028/1	CAMBRIDGE POWER KNOB	3		
..2	6510-150241-000		AI TOP COVER (MODIFIED)	1		MODIFIED TO DRAWING API0019/3
...3	6510-150241-000-XXXX	CAMA107D	AI TOP COVER	1		
..2		API0304/2	AMPLIFIER SUB-PANEL WITH TD & RC	1		
..2			A500RC FRONT PANEL (PUNCHED AND PRINTED)	1		PRINTED WITH ARTWORK API0286/1, API0287/1
...3		API0269/2	AMPLIFIER FRONT PANEL WITH RC & TD	1		
..2			A500RC REAR PANEL (PRINTED)	1		PRINTED WITH ARTWORK NO. API0294/1
...3		API0276/1	AMPLIFIER REAR PANEL WITH IEC, 8RCA, 2 SPKR	1		
...3		API0246/4	CAMBRIDGE REMOTE EYE	1		
...4			INFRARED SENSOR SBX1910-52	1		
...3			LED TRI-COLOUR (ORANGE/RED/GREEN) 3mm	1		PIN-OUT AS PER API0451/1
..2	7003-006001-111		SCREW M3X6 S.T.P. B/H (SILVER)	9		TOP COVER TO REAR PANEL X2/REAR PANEL TO BASE X7/
..2	7003-006001-131		SCREW M3X6 S.T.P. PW/H (BLK)	4		TOP COVER TO BASE (L&R) X4
..2			BOLT M3x10 B/H	2		IEC TO REAR PANEL
..2	7003-008002-111		SCREW M3X8 P.T.P. B/H (SILVER)	10		SPEAKER TERMINAL TO REAR PANEL X6/RCA TERMINAL TO REAR PANEL X4

## A 300 / A 500 Amplifier idle current adjustment procedure

When replacing the SAP15 output pair, reset the bias current by adjusting RV201 while monitoring the voltage between pins S and E of the transistor, to achieve a voltage of **13mV** (equivalent of approx 60mA).

