

CA3028

IF AMPLIFIER

actual circuit diagram of the circuit

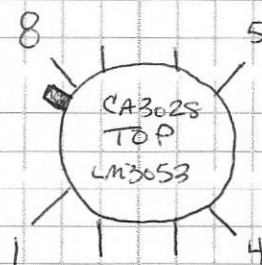
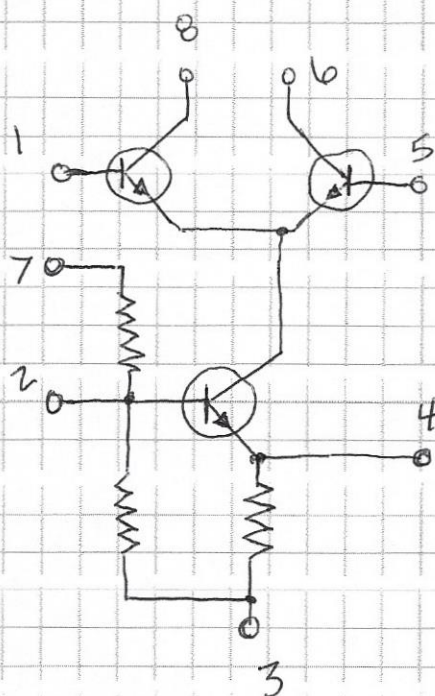
GAIN TYPICAL

455 KHz V_{in} 20 mV p-p
32 dB V_{out} 775 mV p-p

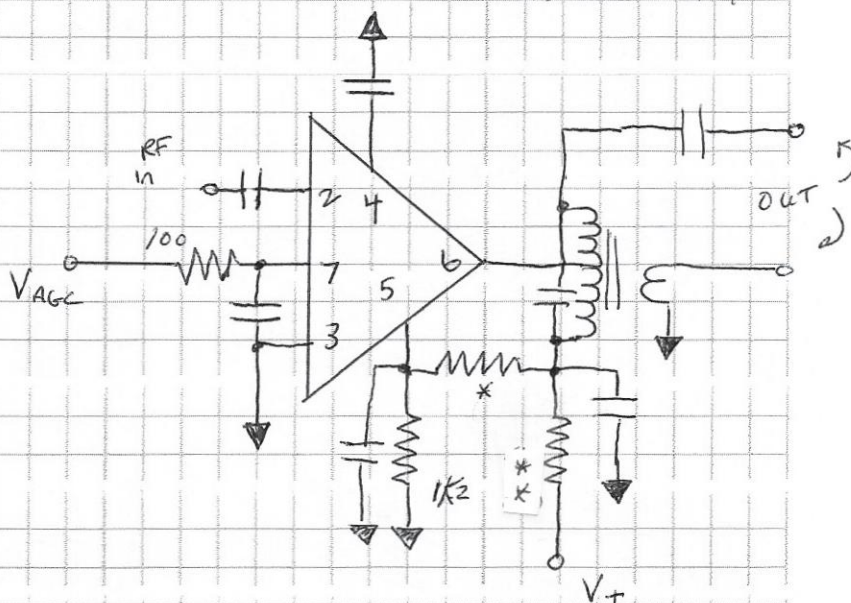
10.7 MHz

LM3053
or
CA/LM3028

Resistors
internal
to chip



"CASCODE" AMP



V_{AGC} ~ 7.4 vdc
MAX GAIN
increasing voltage
MIN GAIN
 ~ 1.7 vdc

to bypass AGC
connect 4K7 between
pins 7 and $V+$

Bypass
10 nF
100 nF
depends on
frequency

* 560
to
1000
typically 820

* 560
to
1000
typically 680