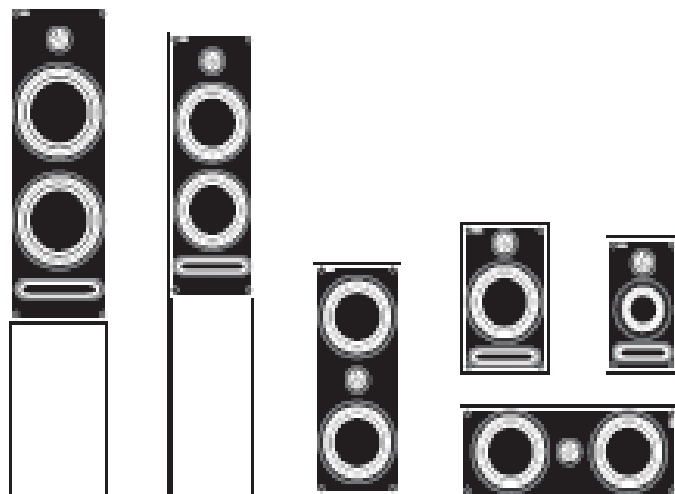




C series Service manual



C⁷

REVISION 1.0 Jul-2008

2-WAY FLOORSTAND SPEAKER

Table of Content

Service part list	2
System Specifications	3
Woofer Specifications	3
Tweeter Specifications	4
Schematic Diagram/ Exploded View of Crossover	5
Exploded View of Cabinet	6
Exploded View of BK Package	8
Exploded View of EWL Package	9
System Frequency Response Curve	10
System Impedance Curve	11

Service part list

P/N	Description
1403-1840+0	K190100A ADJUSTABLE FOOT
1419-1310+0	PLINTH C7 BK
145B-4040+0	M.BOX C7 SGL
1491-7391+0	POLY.FOAM C7 WHITE 450X320X120
1491-7392+0	POLYFAOM B C7
2904-6020+3000	SCREW M6*20 12MM BK
4124-0711+0	TERMINAL PANEL C3 JY251-1
4159-1400+0	SHORTING LINK RIGHT C3
4159-1410+0	SHORTING LINK LEFT C3
4160-1100+0	GRILLE SOCKET BK C1
SVC-GRILLE+C7	C7 GRILLE BK SPARE
SVC-TW+C1	SPART PART C1 TW
SVC-WF+C7	SPARE PART C7 WF
SVC-XOV+C7	C7 XOVER SPARE

System Specifications

Frequency Range	36 Hz~ 40K Hz
SPL Sensitivity	90dB @1W/m
Nominal Rating	15~125W
Dimension (H x W x D)	965x203x286 mm
Net Weight	13.4kg / pcs
Finish	Black or EWL

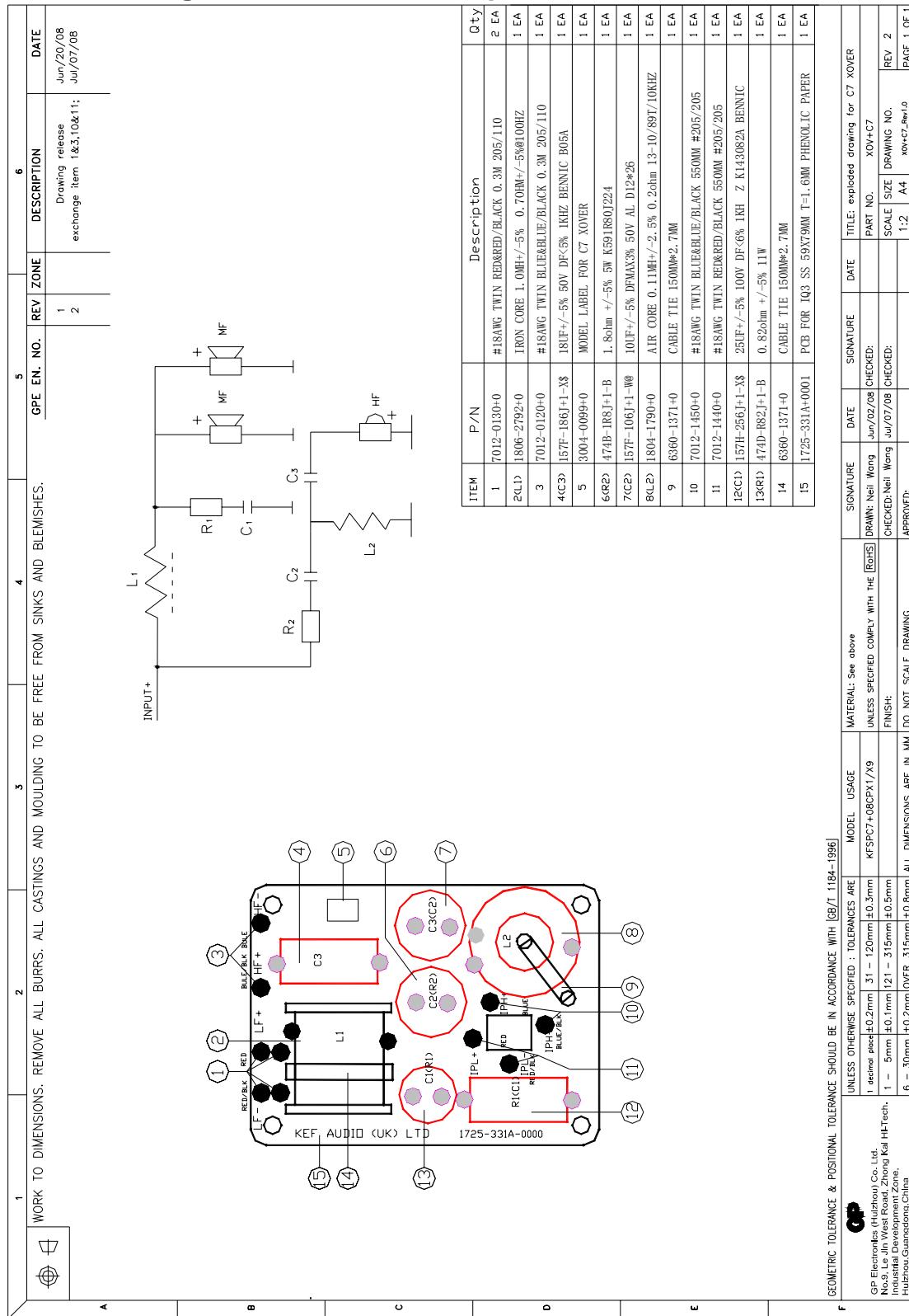
Woofer Specifications

Rated Impedance	6+/-1.2 ohms at 1V 400 Hz
Sweep Test	Sine Wave 6V at 20~20K Hz
Resonant Frequency (Fo)	43 +/- 8Hz at 1V
Sensitivity	88+/-2 dB/W/m
Frequency Response	Fo - 3K Hz
Rated Power Input	50W
Power Test	50W RMS/Channel (The rated power is verified by performing power handling test by feeding rated output with IEC268-5 for 8 hours)
Heat Test	60 °C 25~50% R.H. 24 hours
Humidity Test	40 °C 90~95%R.H. 24 hours
Main Magnet	Ø80 x Ø40x 15mm Ferrite
Bucking magnet	Ø70x Ø32 x 8mm Ferrite
Voice Coil Bobbin Material	Al
Cone Material	Paper with PP coated
Surround Material	Rubber

Tweeter Specifications

Rated Impedance	3 +/- 0.6 ohms at 1V 3K Hz
Sweep Test	Sine Wave 1V at 1K~20K Hz
Sensitivity	86dB/W/m
Frequency Response	Fo--18K Hz
Rated Power Input	50W
Power Test	50W RMS/Channel with Q1 Xover (The rated power is verified by performing power handling test by feeding rated output with IEC268-5 for 4 hours)
Heat Test	60 °C /% R.H. 24 hours
Humidity Test	40 °C 90~95% R.H. 24 hours
Voice Coil Bobbin Material	Kapton
Dome Material	Aluminum

Schematic Diagram of Crossover/ Exploded View of Crossover



Exploded view drawing of a kitchen sink unit. The drawing shows the front panel, basin, and internal components like the drain and faucet. Dimensions and tolerances are specified for various parts.

Dimensions and Tolerances:

- 1 decimal place: $\pm 0.1\text{mm}$
- 31 - 120mm: $\pm 0.3\text{mm}$
- 1 - 5mm: $\pm 0.1\text{mm}$
- 121 - 315mm: $\pm 0.5\text{mm}$
- 6 - 30mm: $\pm 0.2\text{mm}$
- OVER 315mm: $\pm 0.8\text{mm}$

Geometric Tolerance & Positional Tolerance should be in accordance with GB/T 1184-1996.

UNLESS OTHERWISE SPECIFIED : TOLERANCES ARE

UNLESS SPECIFIED COMPLY WITH THE [RoHS]

FINISH:

ALL DIMENSIONS ARE IN MM. DO NOT SCALE DRAWING.

APPROVED:

GP Electronics (Huizhou) Co., Ltd.
No.8, Le Jin West Road, Zhong Kai Hi-Tech,
Huizhou Development Zone,
Huizhou City, Guangdong Province, China

Exploded View of BK Package

ITEM	PART NO	DESCRIPTION	QTY.	1	2	3	4	5	6
1	4301-6033+1	WARRANTY CARD FOR Q95C.2	10 EA						
2	4301-5383+0	MANUAL C-SERIES A4	10 EA						
3	1497-4122+0	P.BAG 10*14" W/ES GREEN	10 EA						
4	1403-1840+0	K190100A ADJUSTABLE FOOT	40 KI						
5	2904-6020+3001	SCREW M6*20 12MM BK	40 EA						
6	1497-2662+0	POLYBAG 04X5X6 W/PE-LD	10 EA						
7	4149-9931+0	PVC GASKET 27*11*1.5	40 EA						
8	145B-4040+0	M.BOX C7 SGL	10 EA						
9	145B-4060+0	CARTON SLEEVE C7	10 EA						
10	1497-4602+0	PO.BAG 550*350*0.04MM	10 EA						
11	1419-1310+0	PLINTH C7 BK	10 EA						
12	1491-7391+0	POLY.FOAM C7 WHITE	10 EA						
13	1497-5092+0	PO BAG FOR Q7 (1300*550*0.04)	10 EA						
14	SYS-C7+X1	KFSPC7+08CPX1	10 EA						
15	3004-0062+0	UPC-LAB C7 BK SGL	10 EA						
16	3004-0076+0	S/N LABEL C7	10 EA						
17	1491-7392+0	POLY.FOAM C7	10 EA						

ITEM	PART NO	DESCRIPTION	QTY.	1	2	3	4	5	6
1	4301-6033+1	WARRANTY CARD FOR Q95C.2	10 EA						
2	4301-5383+0	MANUAL C-SERIES A4	10 EA						
3	1497-4122+0	P.BAG 10*14" W/ES GREEN	10 EA						
4	1403-1840+0	K190100A ADJUSTABLE FOOT	40 KI						
5	2904-6020+3001	SCREW M6*20 12MM BK	40 EA						
6	1497-2662+0	POLYBAG 04X5X6 W/PE-LD	10 EA						
7	4149-9931+0	PVC GASKET 27*11*1.5	40 EA						
8	145B-4040+0	M.BOX C7 SGL	10 EA						
9	145B-4060+0	CARTON SLEEVE C7	10 EA						
10	1497-4602+0	PO.BAG 550*350*0.04MM	10 EA						
11	1419-1310+0	PLINTH C7 BK	10 EA						
12	1491-7391+0	POLY.FOAM C7 WHITE	10 EA						
13	1497-5092+0	PO BAG FOR Q7 (1300*550*0.04)	10 EA						
14	SYS-C7+X1	KFSPC7+08CPX1	10 EA						
15	3004-0062+0	UPC-LAB C7 BK SGL	10 EA						
16	3004-0076+0	S/N LABEL C7	10 EA						
17	1491-7392+0	POLY.FOAM C7	10 EA						

ITEM	PART NO	DESCRIPTION	QTY.	1	2	3	4	5	6
1	4301-6033+1	WARRANTY CARD FOR Q95C.2	10 EA						
2	4301-5383+0	MANUAL C-SERIES A4	10 EA						
3	1497-4122+0	P.BAG 10*14" W/ES GREEN	10 EA						
4	1403-1840+0	K190100A ADJUSTABLE FOOT	40 KI						
5	2904-6020+3001	SCREW M6*20 12MM BK	40 EA						
6	1497-2662+0	POLYBAG 04X5X6 W/PE-LD	10 EA						
7	4149-9931+0	PVC GASKET 27*11*1.5	40 EA						
8	145B-4040+0	M.BOX C7 SGL	10 EA						
9	145B-4060+0	CARTON SLEEVE C7	10 EA						
10	1497-4602+0	PO.BAG 550*350*0.04MM	10 EA						
11	1419-1310+0	PLINTH C7 BK	10 EA						
12	1491-7391+0	POLY.FOAM C7 WHITE	10 EA						
13	1497-5092+0	PO BAG FOR Q7 (1300*550*0.04)	10 EA						
14	SYS-C7+X1	KFSPC7+08CPX1	10 EA						
15	3004-0062+0	UPC-LAB C7 BK SGL	10 EA						
16	3004-0076+0	S/N LABEL C7	10 EA						
17	1491-7392+0	POLY.FOAM C7	10 EA						

ITEM	PART NO	DESCRIPTION	QTY.	1	2	3	4	5	6
1	4301-6033+1	WARRANTY CARD FOR Q95C.2	10 EA						
2	4301-5383+0	MANUAL C-SERIES A4	10 EA						
3	1497-4122+0	P.BAG 10*14" W/ES GREEN	10 EA						
4	1403-1840+0	K190100A ADJUSTABLE FOOT	40 KI						
5	2904-6020+3001	SCREW M6*20 12MM BK	40 EA						
6	1497-2662+0	POLYBAG 04X5X6 W/PE-LD	10 EA						
7	4149-9931+0	PVC GASKET 27*11*1.5	40 EA						
8	145B-4040+0	M.BOX C7 SGL	10 EA						
9	145B-4060+0	CARTON SLEEVE C7	10 EA						
10	1497-4602+0	PO.BAG 550*350*0.04MM	10 EA						
11	1419-1310+0	PLINTH C7 BK	10 EA						
12	1491-7391+0	POLY.FOAM C7 WHITE	10 EA						
13	1497-5092+0	PO BAG FOR Q7 (1300*550*0.04)	10 EA						
14	SYS-C7+X1	KFSPC7+08CPX1	10 EA						
15	3004-0062+0	UPC-LAB C7 BK SGL	10 EA						
16	3004-0076+0	S/N LABEL C7	10 EA						
17	1491-7392+0	POLY.FOAM C7	10 EA						

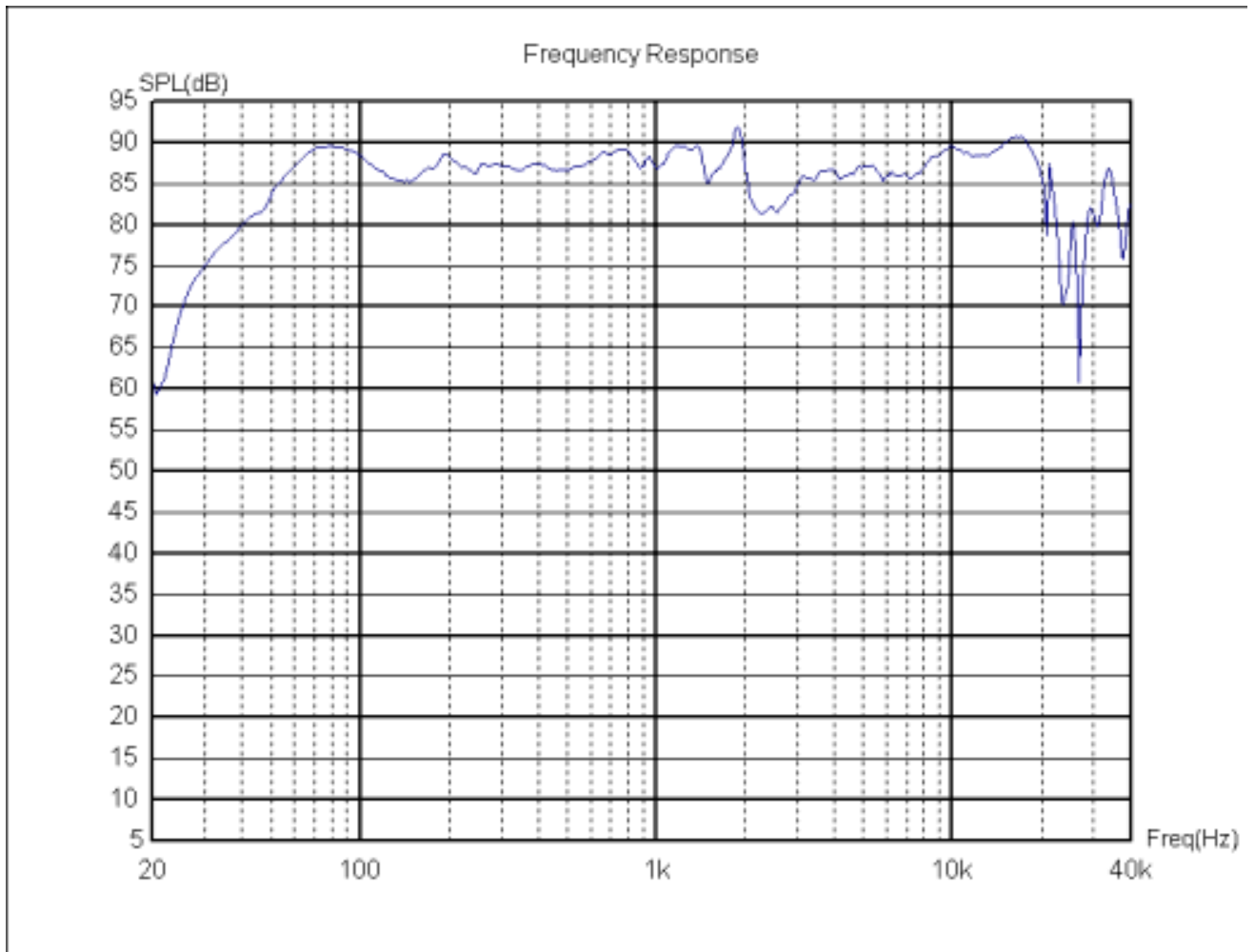
ITEM	PART NO	DESCRIPTION	QTY.	1	2	3	4	5	6
1	4301-6033+1	WARRANTY CARD FOR Q95C.2	10 EA						
2	4301-5383+0	MANUAL C-SERIES A4	10 EA						
3	1497-4122+0	P.BAG 10*14" W/ES GREEN	10 EA						
4	1403-1840+0	K190100A ADJUSTABLE FOOT	40 KI						
5	2904-6020+3001	SCREW M6*20 12MM BK	40 EA						
6	1497-2662+0	POLYBAG 04X5X6 W/PE-LD	10 EA						
7	4149-9931+0	PVC GASKET 27*11*1.5	40 EA						
8	145B-4040+0	M.BOX C7 SGL	10 EA						
9	145B-4060+0	CARTON SLEEVE C7	10 EA						
10	1497-4602+0	PO.BAG 550*350*0.04MM	10 EA						
11	1419-1310+0	PLINTH C7 BK	10 EA						
12	1491-7391+0	POLY.FOAM C7 WHITE	10 EA						
13	1497-5092+0	PO BAG FOR Q7 (1300*550*0.04)	10 EA						
14	SYS-C7+X1	KFSPC7+08CPX1	10 EA						
15	3004-0062+0	UPC-LAB C7 BK SGL	10 EA						
16	3004-0076+0	S/N LABEL C7	10 EA						
17	1491-7392+0	POLY.FOAM C7	10 EA						

ITEM	PART NO	DESCRIPTION	QTY.	1	2	3	4	5	6
1	4301-6033+1	WARRANTY CARD FOR Q95C.2	10 EA						
2	4301-5383+0	MANUAL C-SERIES A4	10 EA						
3	1497-4122+0	P.BAG 10*14" W/ES GREEN	10 EA						
4	1403-1840+0	K190100A ADJUSTABLE FOOT	40 KI						
5	2904-6020+3001	SCREW M6*20 12MM BK	40 EA						
6	1497-2662+0	POLYBAG 04X5X6 W/PE-LD	10 EA						
7	4149-9931+0	PVC GASKET 27*11*1.5	40 EA						
8	145B-4040+0	M.BOX C7 SGL	10 EA						
9	145B-4060+0	CARTON SLEEVE C7	10 EA						
10	1497-4602+0	PO.BAG 550*350*0.04MM	10 EA						
11	1419-1310+0	PLINTH C7 BK	10 EA						
12	1491-7391+0	POLY.FOAM C7 WHITE	10 EA						
13	1497-5092+0	PO BAG FOR Q7 (1300*550*0.04)	10 EA						
14	SYS-C7+X1	KFSPC7+08CPX1	10 EA						
15	3004-0062+0	UPC-LAB C7 BK SGL	10 EA						
16	3004-0076+0	S/N LABEL C7	10 EA						
17	1491-7392+0	POLY.FOAM C7	10 EA						

ITEM	PART NO	DESCRIPTION	QTY.	1	2	3	4	5	6
1	4301-6033+1	WARRANTY CARD FOR Q95C.2	10 EA						
2	4301-5383+0	MANUAL C-SERIES A4	10 EA						
3	1497-4122+0	P.BAG 10*14" W/ES GREEN	10 EA						
4	1403-1840+0	K190100A ADJUSTABLE FOOT	40 KI						
5	2904-6020+3001	SCREW M6*20 12MM BK	40 EA						
6	1497-2662+0	POLYBAG 04X5X6 W/PE-LD	10 EA						
7	4149-9931+0	PVC GASKET 27*11*1.5	40 EA						
8	145B-4040+0	M.BOX C7 SGL	10 EA						
9	145B-4060+0	CARTON SLEEVE C7	10 EA						
10	1497-4602+0	PO.BAG 550*350*0.04MM	10 EA						
11	1419-1310+0	PLINTH C7 BK	10 EA						
12	1491-7391+0	POLY.FOAM C7 WHITE	10 EA						
13	1497-5092+0	PO BAG FOR Q7 (1300*550*0.04)	10 EA						
14	SYS-C7+X1	KFSPC7+08CPX1	10 EA						
15	3004-0062+0	UPC-LAB C7 BK SGL	10 EA						
16	3004-0076+0	S/N LABEL C7	10 EA						
17	1491-7392+0	POLY.FOAM C7	10 EA						

[illegible]

System Frequency Response Curve



System Impedance Response Curve

