



TITLE

G. A. PARTS LIST

DRG. NO.

A 3909-2 -2

ISS

1

COPYRIGHT © 1998

DATE 10/03/98

DRAWN KW

No.	QTY	CODE No.	DESCRIPTION		DRG. No.
		FP10411	Complete Assembly		A3909
1	1	Y10677	Cabinet		C3882
2	1	ZZ11282	Bass Unit		A3910
3	1	ZG0712	Grille Assembly		A3917
4	1	A5171	Amplifier Module (UK & EC Type)		
5	1	P10749	Port Facia Inner		C3469
6	1	P11029	Port Facia		C3447
7	1	P12246	Port Tube		A3624
8	4	F3174	Feet		A3284
9	1	S7951	Foam Sleeving		
10	4	S6211	Suede Disks		PUR S6211
11	1	See Note	Mains Lead		
12	1	B0868	Badge		A2478
13	1	S7921	Serial Label		
14	12	H1538	Screws (Amplifier) M4x30 Pozi Pan C/B		
15	8	H1163	Screws (Bass Unit) 6mm Cap HD Skt x 30		
16	4	P12599	Eelon Fixings Female		
17	1	M0434	Wave Front Moulding		C3494
18	1	M0442	Bottom Interface Moulding		C3493
19	1	F0566	Fastener		PUR F0566
20	4	P1709	Blanking Plugs (Red)	UK & EC Only	A3076
21	4	P1717	Blanking Plugs (Black)		A3076
22	2	H0019	Screws		
23	8	H1107	Washer M7 Black		
24	1	L8299	Transformer Label		

Note:—

Mains Leads

ASW—US—Mainslead

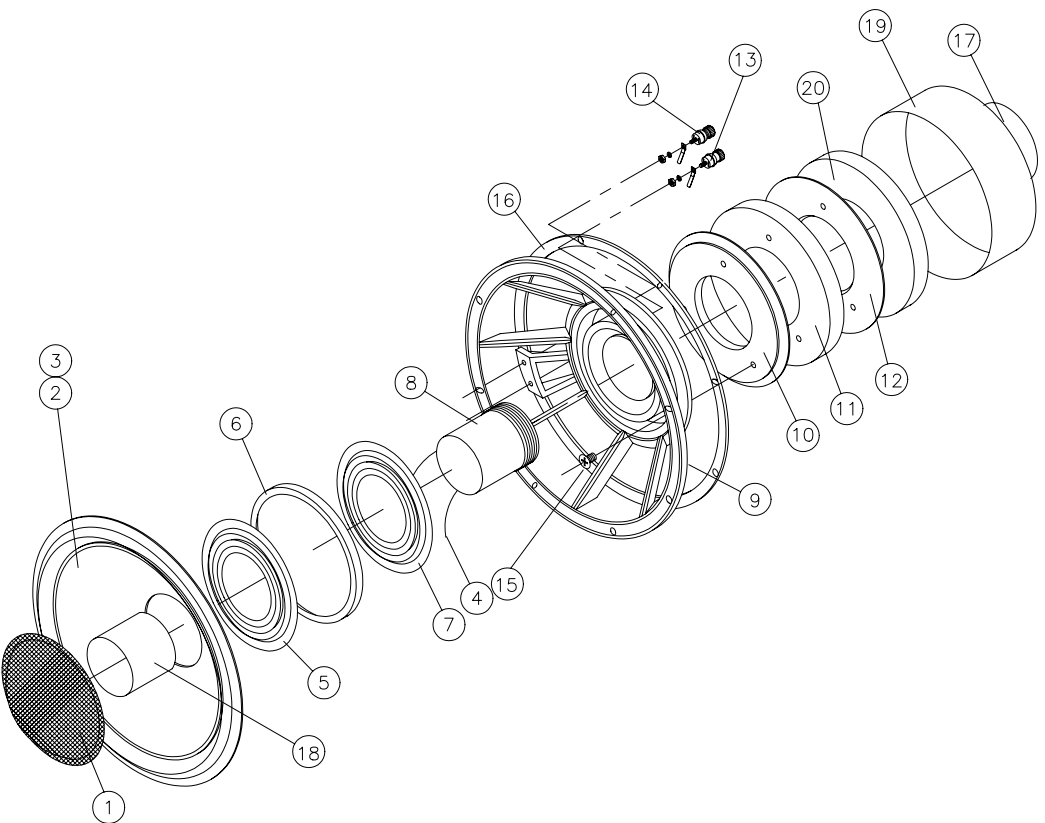
Euro Mainslead

ASW—UK—Mainslead

US Only

Euro & Australia Only

UK & New Zealand Only



4	ECC 625 REMOVED RRO6823 CARD RING	625	18.02.02	APPROVAL
ISSUE	AMENDMENT	ECN No.	DATE	



TITLE

BASS UNIT PARTS LIST

DRG. NO.

A3910-2 -2

ISS

4

COPYRIGHT © 1998

DATE 10/03/98

DRAWN KW

No.	QTY	CODE	DESCRIPTION		DRG No.
		ZZ11282	Complete Assembly		A3910
		ZC11282	Cone to Coil Assembly		
1	1	DD01196	Dust Cap		A3467
2	1	CC09108	Cone	ZS09928	A3514
3	1	SS07969	Surround		
4	2	TT06475	Tinsel		
5	1	SS07938	Rear Suspension (Top)		A3533
6	1	MM00418	Rear Suspension Spacer		A3459
7	1	SS07938	Rear Suspension (Bottom)		A3533
8	1	ZV00787	Voice Coil		ZV0787
9	1	CC09091	Chassis		C2837
10	1	PP09852	Top Plate		A3520
11	1	MM00531	Magnet		A3557
12	1	PP11487	Back Plate		A3803
13	1	CC09334	Terminal Red		
14	1	CC09326	Terminal Black		
15	3	HH09938	Screws M6x16 Soc. Hd. C/Bk		
16	1	GG05800	Gasket		B3558
17	1	LL03000	Label		
18	1	CC11703	Sleeve		
19	1	PP11495	Shielding Can		A3804
20	1	MM00376	Bucking Magnet		A3242

4	ECC 625 REMOVED RR06823 CARD RING	625	18:02:02	
ISSUE	AMENDMENT	ECN No.	DATE	APPROVAL



TITLE

GRILLE ASSEMBLY

DRG. NO.

A 3917-1 -1

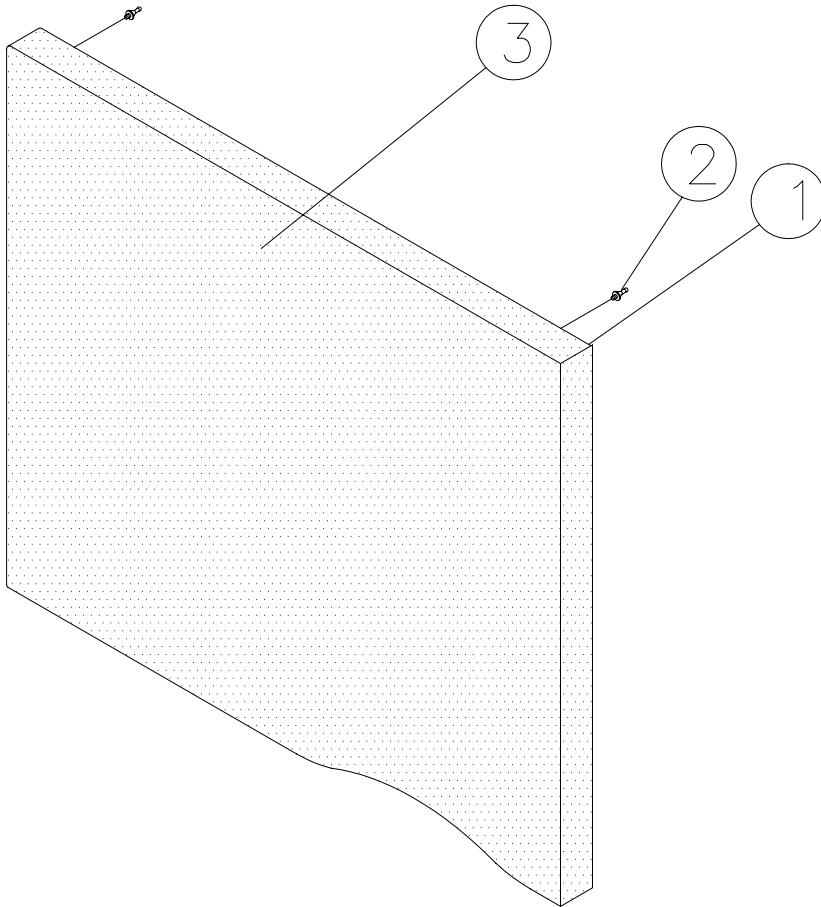
ISS

1

COPYRIGHT © 1998

DATE 10/03/98

DRAWN KW



No.	QTY	CODE	DESCRIPTION	DRG No.
		ZG0712	Complete Assembly	A3917
1	1	G6084	Grille Fret	C3882
1	4	P12580	Grille Fixing Male	
1		F9709	Grille Cloth E17	

REF NO.	VALUE	DESCRIPTION
R601	1K	1/4W METAL FILM RESISTOR
R602	100K	1/4W METAL FILM RESISTOR
R603	475	1/4W METAL FILM RESISTOR
R604	1.21K	1/4W METAL FILM RESISTOR
R605	33.2	1/4W METAL FILM RESISTOR
R606	3.92K	1/4W METAL FILM RESISTOR
R607	10K	1W RESISTOR
R608	100R	1/4W METAL FILM RESISTOR
R609	8.25K	1/4W METAL FILM RESISTOR
R610	1.82K	1/4W METAL FILM RESISTOR
R611	33.2K	1/4W METAL FILM RESISTOR
R612	22.1K	1/4W METAL FILM RESISTOR
R613	221K	1/4W METAL FILM RESISTOR
R614	220R	1/2W RESISTOR
R615	220R	1/2W RESISTOR
R616	0.22R	2W RESISTOR
R617	0.22R	2W RESISTOR
R618	0.22R	2W RESISTOR
R619	0.22R	2W RESISTOR
R620	0.22R	2W RESISTOR
R621	0.22R	2W RESISTOR
R622	47.5R	1/4W METAL FILM RESISTOR
R623	121R	1/4W METAL FILM RESISTOR
R624	22.1K	1/4W METAL FILM RESISTOR
R625	27.4K	1/4W METAL FILM RESISTOR
R626	27.4K	1/4W METAL FILM RESISTOR
R627	475R	1/4W METAL FILM RESISTOR
R628	10R	1W RESISTOR
R629	0.22R	2W RESISTOR
R630	0.22R	2W RESISTOR
R631	10K	1W RESISTOR
R632	10K	1W RESISTOR
R801	10K	1/4W METAL FILM RESISTOR
R802	68.1K	1/4W METAL FILM RESISTOR
R803	221K	1/4W METAL FILM RESISTOR
R804	12.1K	1/4W METAL FILM RESISTOR
R805	150K	1/4W METAL FILM RESISTOR
R806	1M	1/4W METAL FILM RESISTOR



TITLE

CIRCUIT DIA PARTS LIST

DRG. NO.

A 4199-3 -5

ISS

1

COPYRIGHT © 1999

DATE 25/01/99

DRAWN KW

R807	150K	1/4W METAL FILM RESISTOR
R808	10K	1/4W METAL FILM RESISTOR
R809	1M	1/4W METAL FILM RESISTOR
R810	100K	1/4W METAL FILM RESISTOR
R811	10K	1/4W METAL FILM RESISTOR
R812	100K	1/4W METAL FILM RESISTOR
R813	121K	1/4W METAL FILM RESISTOR
R814	8.25K	1/4W METAL FILM RESISTOR
R815	2K	1/4W METAL FILM RESISTOR
R816	1.5K	2W RESISTOR
R817	10K	1W RESISTOR
R818	22.1K	1/4W METAL FILM RESISTOR
R819	1K	1/4W METAL FILM RESISTOR
R820	100K	1/4W METAL FILM RESISTOR
R901	10K	1W RESISTOR
R902	5.6K	2W RESISTOR
R903	5.6K	2W RESISTOR
D601	1N4148	1A 75V DIODE
D602	1N4148	1A 75V DIODE
D603	1N4148	1A 75V DIODE
D604	1N4148	1A 75V DIODE
D605	E-822	CONSTANT CURRENT DIODE
D801	1N4148	1A 75V DIODE
D802	1N4148	1A 75V DIODE
D803	1N4148	1A 75V DIODE
D804	1N4148	1A 75V DIODE
D805	1N4148	1A 75V DIODE
D901	MP-254W	BRIDGE RECTIFIER
D902	1N4003	DIODE
RH801	TD5C350D	THERMISTOR TTC-503K
Q601	2SA1016	TRANSISTOR
Q602	2SA1016	TRANSISTOR
Q603	2SA1016	TRANSISTOR
Q604	2SC2910	TRANSISTOR
Q605	2SA1016	TRANSISTOR
Q606	2SA1208	TRANSISTOR
Q607	2SC536	TRANSISTOR



TITLE

CIRCUIT DIA PARTS LIST

DRG. NO.

A 4199-4 -5

ISS

1

COPYRIGHT © 1999

DATE 25/01/99

DRAWN KW

Q608	2SD600	TRANSISTOR
Q609	2SC3856	TRANSISTOR
Q610	2SA1492	TRANSISTOR
Q611	2SC5200	TRANSISTOR
Q612	2SA1943	TRANSISTOR
Q613	2SC5200	TRANSISTOR
Q614	2SA1943	TRANSISTOR
Q615	2SC5200	TRANSISTOR
Q616	2SA1943	TRANSISTOR
Q617	2SA1016	TRANSISTOR
Q618	2SA1943	TRANSISTOR
Q619	2SC5200	TRANSISTOR
Q801	2SC536	TRANSISTOR
Q802	2SC536	TRANSISTOR
Q803	2SC536	TRANSISTOR
Q804	2SC536	TRANSISTOR
Q805	2SC536	TRANSISTOR
Q806	2SC536	TRANSISTOR
Q807	2SA1345	TRANSISTOR
Q808	2SC3399	TRANSISTOR
C601	50V 1nF	CERAMIC CAP
C602	500V 150pF	CERAMIC CAP
C603	50V 330pF	CERAMIC CAP
C604	50V 10nF	CERAMIC CAP
C605	25V 220uF	ELECTROLYTIC CAP
C606	500V 150pF	CERAMIC CAP
C607	50V 224J	MYLAR CAP
C801	50V 10uF	ELECTROLYTIC CAP
C802	50V 10uF	ELECTROLYTIC CAP
C803	50V 470nF	ELECTROLYTIC CAP
C804	25V 100uF	ELECTROLYTIC CAP
C805	50V 10uF	CERAMIC CAP
C806	16V 220uF	ELECTROLYTIC CAP
C807	50V 22uF	ELECTROLYTIC CAP
C808	50V 33uF	ELECTROLYTIC CAP
C809	35V 100uF	ELECTROLYTIC CAP
C901	500V 10nF	CERAMIC CAP
C902	500V 10nF	CERAMIC CAP
C903	500V 10nF	CERAMIC CAP



TITLE

CIRCUIT DIA PARTS LIST

DRG. NO.

A 4199-5 -5

ISS

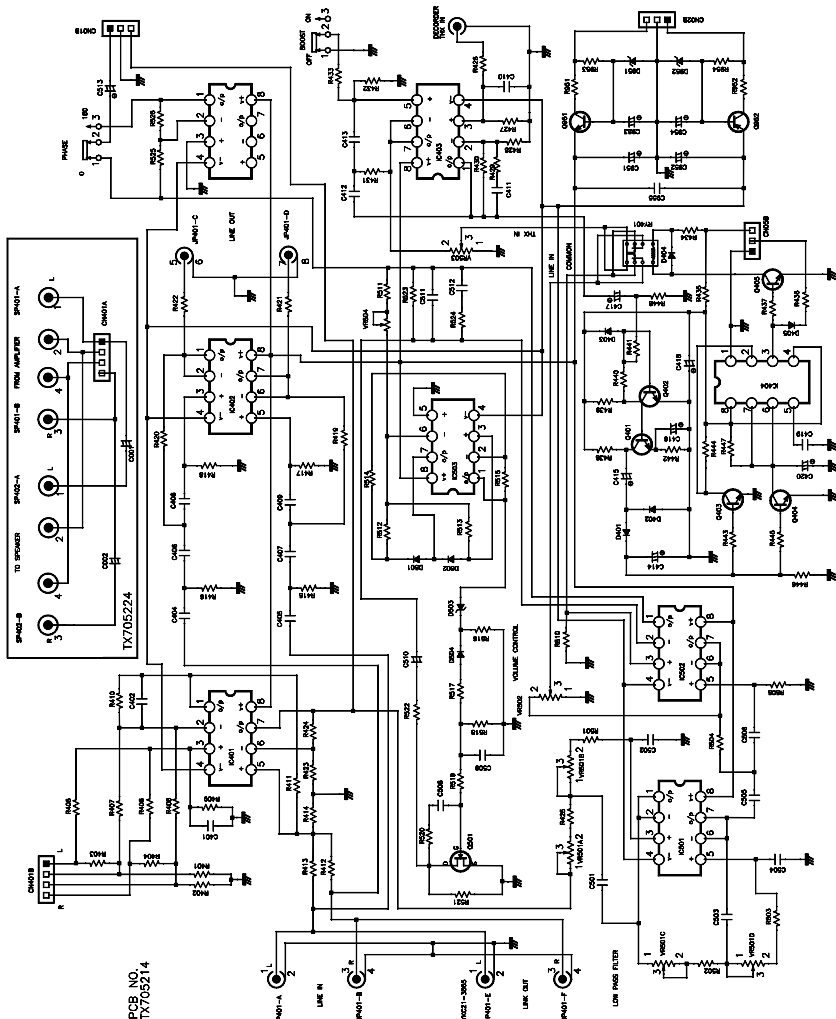
1

COPYRIGHT © 1999

DATE 25/01/99

DRAWN KW

C904	500V 10nF	CERAMIC CAP
C905	120V 8200uF	ELECTROLYTIC CAP
C906	120V 8200uF	ELECTROLYTIC CAP
C907	50V 10uF	ELECTROLYTIC CAP
C0A	250V 100nF	X-RATED CAP
VR601	4K7	PRESET
VR602	2K2	PRESET
IC801	JM555D	SINGLE TIMER
IC802	PC1237H	AMP PROTECTION IC
RY801		RELAY 24V 5A (DPST)





TITLE

PRE AMP CIR. DIA. P/LIST

DRG. NO.

A4200-2 -5

ISS

1

COPYRIGHT © 1999

DATE 21/01/99

DRAWN KW

REF No.	VALUE	DESCRIPTION
R401	18.2K	1/4W METAL FILM RESISTOR
R402	18.2K	1/4W METAL FILM RESISTOR
R403	18.2K	1/4W METAL FILM RESISTOR
R404	18.2K	1/4W METAL FILM RESISTOR
R405	100K	1/4W METAL FILM RESISTOR
R406	100K	1/4W METAL FILM RESISTOR
R407	100K	1/4W METAL FILM RESISTOR
R408	100K	1/4W METAL FILM RESISTOR
R409	4.75K	1/4W METAL FILM RESISTOR
R410	4.75K	1/4W METAL FILM RESISTOR
R411	33.2K	1/4W METAL FILM RESISTOR
R412	22.1K	1/4W METAL FILM RESISTOR
R413	22.1K	1/4W METAL FILM RESISTOR
R414	10K	1/4W METAL FILM RESISTOR
R415	9.09K	1/4W METAL FILM RESISTOR
R416	9.09K	1/4W METAL FILM RESISTOR
R417	35.7K	1/4W METAL FILM RESISTOR
R418	35.7K	1/4W METAL FILM RESISTOR
R419	5.62K	1/4W METAL FILM RESISTOR
R420	5.62K	1/4W METAL FILM RESISTOR
R421	100R	1/4W METAL FILM RESISTOR
R422	100R	1/4W METAL FILM RESISTOR
R423	3.01K	1/4W METAL FILM RESISTOR
R424	24.3K	1/4W METAL FILM RESISTOR
R425	7.5K	1/4W METAL FILM RESISTOR
R426	1K	1/4W METAL FILM RESISTOR
R427	100K	1/4W METAL FILM RESISTOR
R428	35.7K	1/4W METAL FILM RESISTOR
R429	1K	1/4W METAL FILM RESISTOR
R430	22.1K	1/4W METAL FILM RESISTOR
R431	2.74K	1/4W METAL FILM RESISTOR
R432	47.5K	1/4W METAL FILM RESISTOR
R433	100K	1/4W METAL FILM RESISTOR
R434	3.9K	2W RESISTOR
R435	10K	1W RESISTOR
R436	100K	1/4W METAL FILM RESISTOR
R437	10K	1/4W METAL FILM RESISTOR
R438	10K	1/4W METAL FILM RESISTOR
R439	68.1K	1/4W METAL FILM RESISTOR
R440	221K	1/4W METAL FILM RESISTOR

R441	2.74K	1/4W METAL FILM RESISTOR
R442	2.21K	1/4W METAL FILM RESISTOR
R443	150K	1/4W METAL FILM RESISTOR
R444	47.5K	1/4W METAL FILM RESISTOR
R445	150K	1/4W METAL FILM RESISTOR
R446	10K	1/4W METAL FILM RESISTOR
R447	681K	1/4W METAL FILM RESISTOR
R448	100K	1/4W METAL FILM RESISTOR
R501	7.5K	1/4W METAL FILM RESISTOR
R502	7.5K	1/4W METAL FILM RESISTOR
R503	7.5K	1/4W METAL FILM RESISTOR
R504	2.74K	1/4W METAL FILM RESISTOR
R505	47.5K	1/4W METAL FILM RESISTOR
R510	22.1K	1/4W METAL FILM RESISTOR
R511	6.81K	1/4W METAL FILM RESISTOR
R512	61K9	1/4W METAL FILM RESISTOR
R513	61K10	1/4W METAL FILM RESISTOR
R514	61K11	1/4W METAL FILM RESISTOR
R515	61K12	1/4W METAL FILM RESISTOR
R516	10K	1/4W METAL FILM RESISTOR
R517	110	1/4W METAL FILM RESISTOR
R518	7.5K	1/4W METAL FILM RESISTOR
R519	221K	1/4W METAL FILM RESISTOR
R520	221K	1/4W METAL FILM RESISTOR
R521	10K	1/4W METAL FILM RESISTOR
R522	1K	1/4W METAL FILM RESISTOR
R523	1K	1/4W METAL FILM RESISTOR
R524	2.21K	1/4W METAL FILM RESISTOR
R525	10K	1/4W METAL FILM RESISTOR
R526	10K	1/4W METAL FILM RESISTOR
R951	330R	1W FUSIBLE RESISTOR
R952	330R	1W FUSIBLE RESISTOR
R953	10K	2W RESISTOR
R954	10K	2W RESISTOR
Q103	2SC538	TRANSISTOR
Q203	2SC539	TRANSISTOR
Q303	2SC540	TRANSISTOR
Q401	2SC536	TRANSISTOR
Q402	2SC537	TRANSISTOR
Q501	2SJ113	TRANSISTOR
Q951	2SD600	TRANSISTOR
Q952	2SB631	TRANSISTOR



TITLE

CIRCUIT DIA PARTS LIST

DRG. NO.

A 4200-4 -5

ISS

1

COPYRIGHT © 1999

DATE 25/01/99

DRAWN KW

BOOST		SLIDE SWITCH SPDT
PHASE		SLIDE SWITCH SPDT
C1	100V 220uF	NON POLAR ELECTROLYTIC CAP
C2	100V 220uF	NON POLAR ELECTROLYTIC CAP
C401	22nF	POLYESTER CAP
C402	22nF	POLYESTER CAP
C404	220nF	POLYESTER CAP
C405	220nF	POLYESTER CAP
C406	220nF	POLYESTER CAP
C407	220nF	POLYESTER CAP
C408	220nF	POLYESTER CAP
C409	220nF	POLYESTER CAP
C410	10nF	POLYESTER CAP
C411	10nF	POLYESTER CAP
C412	680nF	POLYESTER CAP
C413	680nF	POLYESTER CAP
C414	50V 10uF	ELECTROLYTIC CAP
C415	50V 10uF	ELECTROLYTIC CAP
C417	50V 2.2uF	ELECTROLYTIC CAP
C418	25V 100uF	ELECTROLYTIC CAP
C419	50V .01uF	CERAMIC CAP
C420	50V 22uF	ELECTROLYTIC CAP
C501	220nF	POLYESTER CAP
C502	82nF	POLYESTER CAP
C503	220nF	POLYESTER CAP
C504	82nF	POLYESTER CAP
C505	680nF	POLYESTER CAP
C506	680nF	POLYESTER CAP
C508	220nF	POLYESTER CAP
C509	47nF	POLYESTER CAP
C510	50V 100uF	NON-POLAR ELECTROLYTIC
C511	50V 22pF	CERAMIC CAP
C512	22nF	POLYESTER CAP
C513	50V 10uF	ELECTROLYTIC CAP
C951	25V 100uF	ELECTROLYTIC CAP
C952	25V 100uF	ELECTROLYTIC CAP
C953	25V 470uF	ELECTROLYTIC CAP
C954	25V 470uF	ELECTROLYTIC CAP
C955	50V .01uF	CERAMIC CAP
IC401	NJM2041D	DUAL LOW-NOISE OP-AMP
IC402	NJM2041D	DUAL LOW-NOISE OP-AMP

IC403	NJM2041D	DUAL LOW-NOISE OP-AMP
IC404	NJM555D	TIMER IC
IC501	NJM2041D	DUAL LOW-NOISE OP-AMP
IC502	NJM2041D	DUAL LOW-NOISE OP-AMP
IC503	TL072CP	DUAL OP-AMP
IC504	NJM2041D	DUAL LOW-NOISE OP-AMP
D401	1N4148	DIODE 1A 75V
D402	1N4149	DIODE 1A 75V
D403	1N4150	DIODE 1A 75V
D404	1N4151	DIODE 1A 75V
D405	1N4152	DIODE 1A 75V
D501	1N4153	DIODE 1A 75V
D502	1N4154	DIODE 1A 75V
D503	RD8.2JS	ZENER DIODE 8.2V
D504	1N4155	DIODE 1A 75V
D951	RD15JS	ZENER DIODE 15V
D952	RD15JS	ZENER DIODE 15V
VR501	20K	4-GANG POTENTIOMETER LOG
VR502	10K	1-GANG POTENTIOMETER LOG
VR503	10K	1-GANG POTENTIOMETER LOG
VR504	10K	PRESET LIN.
THX IN	1P PIN JACK	SINGLE PHONO INPUT
JP401A-F	6P PIN JACK	6 WAY PHONO INPUT
RY401		RELAY 12V DPDT
SP401		SPEAKER TERMINAL
SP402		SPEAKER TERMINAL