
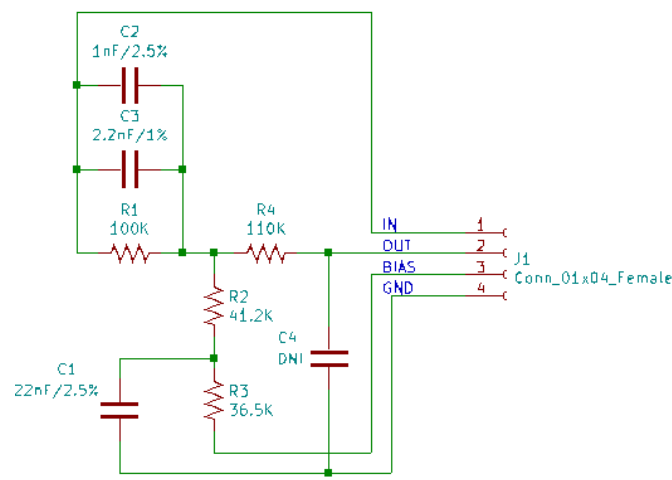


## EQ8.20523 Strain Gauge EQ Parts List

Ref Des	Value and Tolerance	Mouser PN	Quantity	Notes
C2	1.0nF 2.5%	<a href="#">505-FKP2D011001D00HO</a>	2	Wima
C1	22nF 2.5%	<a href="#">505-FKP20.022/100/2</a>	2	Wima
C3	2.2nF 1%	<a href="#">75-KP1830222011</a>	2	Vishay
R3	36.5K 0.1%	<a href="#">667-ERA-8AEB3652V</a>	2	Panasonic
R2	41.2K 0.1%	<a href="#">279-RP73D2B41K2BTG</a>	2	TE Connectivity
R1	100K 0.1%	<a href="#">667-ERA-8AEB104V</a>	2	Panasonic
R4	110K 0.1%	<a href="#">667-ERA-8AEB114V</a>	2	Panasonic

Ref Des	Description	DigiKey	Quantity	Notes
J1	Single inline connector, 4 pin	 <a href="#">S5479-ND</a>	2	Gold Contacts!

In addition, a pair of PCB from Oshpark is required. (Order at Oshpark – single set \$4.10 as of 2020-05-23)



I don't believe that C2 is actually necessary, the simulations indicate it is beneficial, but listening tests so far don't indicate that it is needed. You're getting this very early, and there may be further changes as I continue to experiment with the new EQ.

For EQ I have basically given up on boutique capacitors, they are too expensive and too difficult to get in the required values and precisions. These are all PP foil types and while not the ultimate, are well suited to the task at hand. A pair of these cards can be built for under \$20.

Feel free to get as many PCB as you want and experiment with refining the EQ.

© 2020 Kevin Kennedy / KTA Not for commercial use