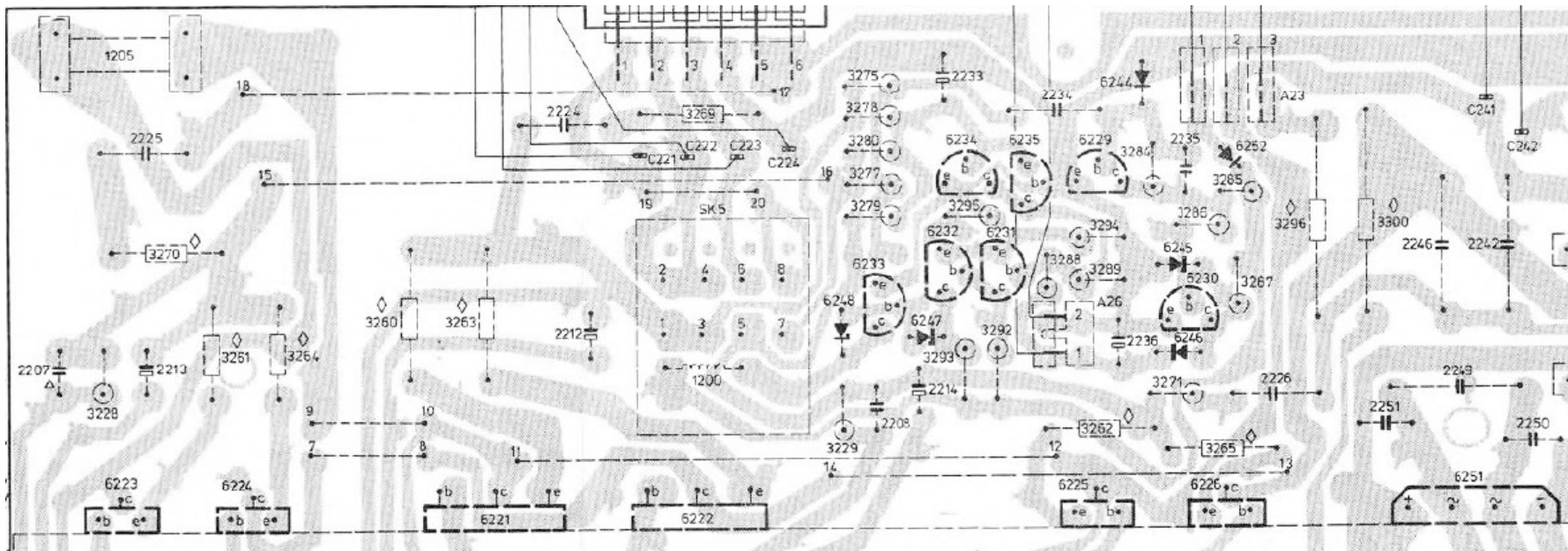


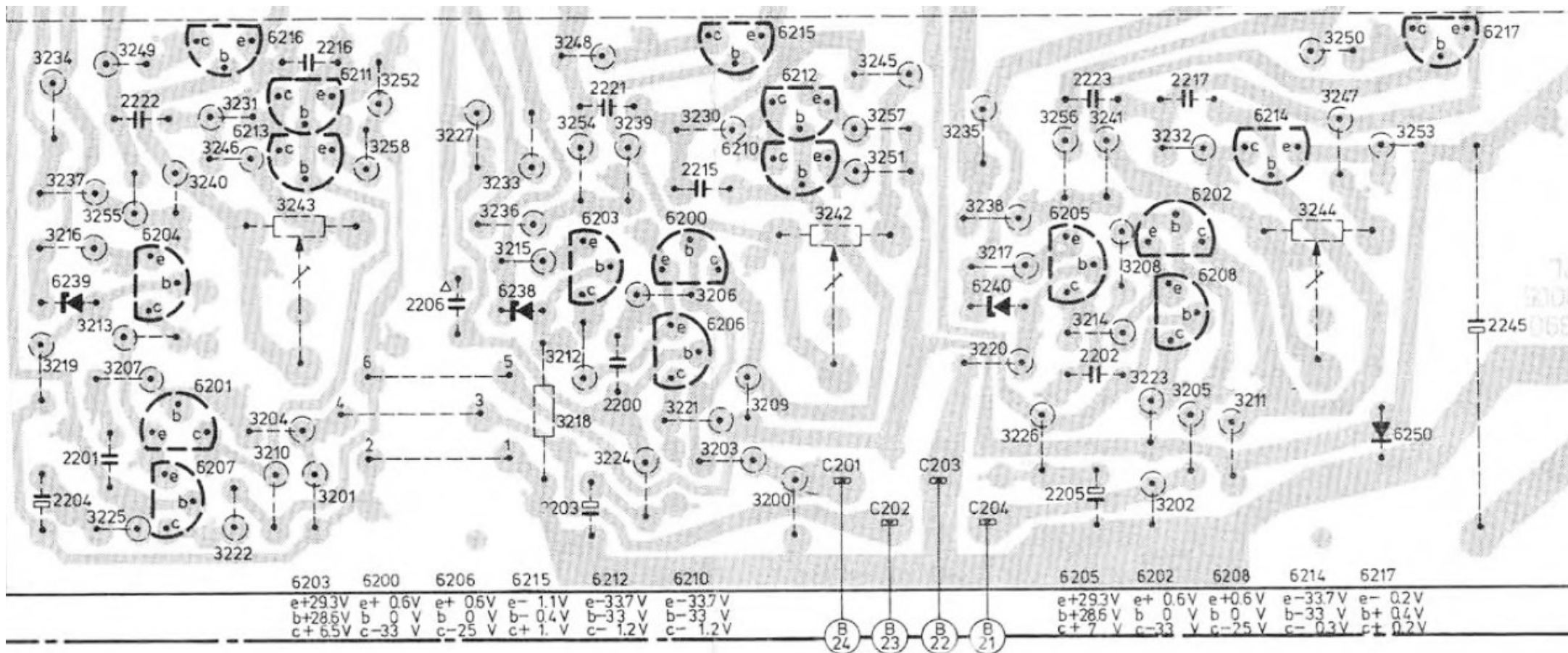
6223
 e 0 V
 b+ 1.1 V
 c+35 V
6224
 e 0 V
 b- 1.1 V
 c-35 V
6221
 e 0 V
 b+ 1.1 V
 c+35 V
6222
 e 0 V
 b- 1.1 V
 c-35 V
6216
 e- 1.1 V
 b- 0.4 V
 c+ 1 V
6211
 e-33.7 V
 b-33 V
 c-1.2 V
6213
 e-33.7 V
 b-33 V
 c-1.2 V
6204
 e+29.3V
 b+28.6V
 c+ 6.5V
6201
 e+ 0.6V
 b 0 V
 c-33 V
6207
 e+ 0.6V
 b 0 V
 c-25 V

6225 e 0 V b+0.3V c+35V	6226 e 0 V b-0.2V c-35V	6229 e 0 V b +0.6V c +1.1V * +1.4V	6230 a 0 V b +0.7V c +0.1V	6231 e+ 0.1V * + 4 V b+ 0.7V c+ 0.2V * + 4.7V
	6232 e +0.1V * +4 V b +0.2V * +4.7 V c +7.5V * +4.1 V	6233 e 0 V b+0.7V* 0 V c 0 V* +35 V	6234 e 0 V b 0 V c +0.7V	
	6235 e 0 V b 0 V c +0.7V	* RELAY IN ...V RELAY OFF ...V		



Voltage Test Results: showing only incorrect readings.

	6216	6211	6213	6225	6226	6229	6230	6231	6232	6234	6235
e											
b				+ 1.2v	- 1.2v	- .0v	- .0v	- .0v	- .0v		
c	+ .5v	- 3.0v	- 3.0v			- .0v	- .0v	- .0v	- .0v	+ .00v	- .01v



Voltage Test Results: showing only incorrect readings.

6215	6214	6217
		e - 1.2v
		b - .6v
c + .3v	c - 2.3v	c - 1.2v