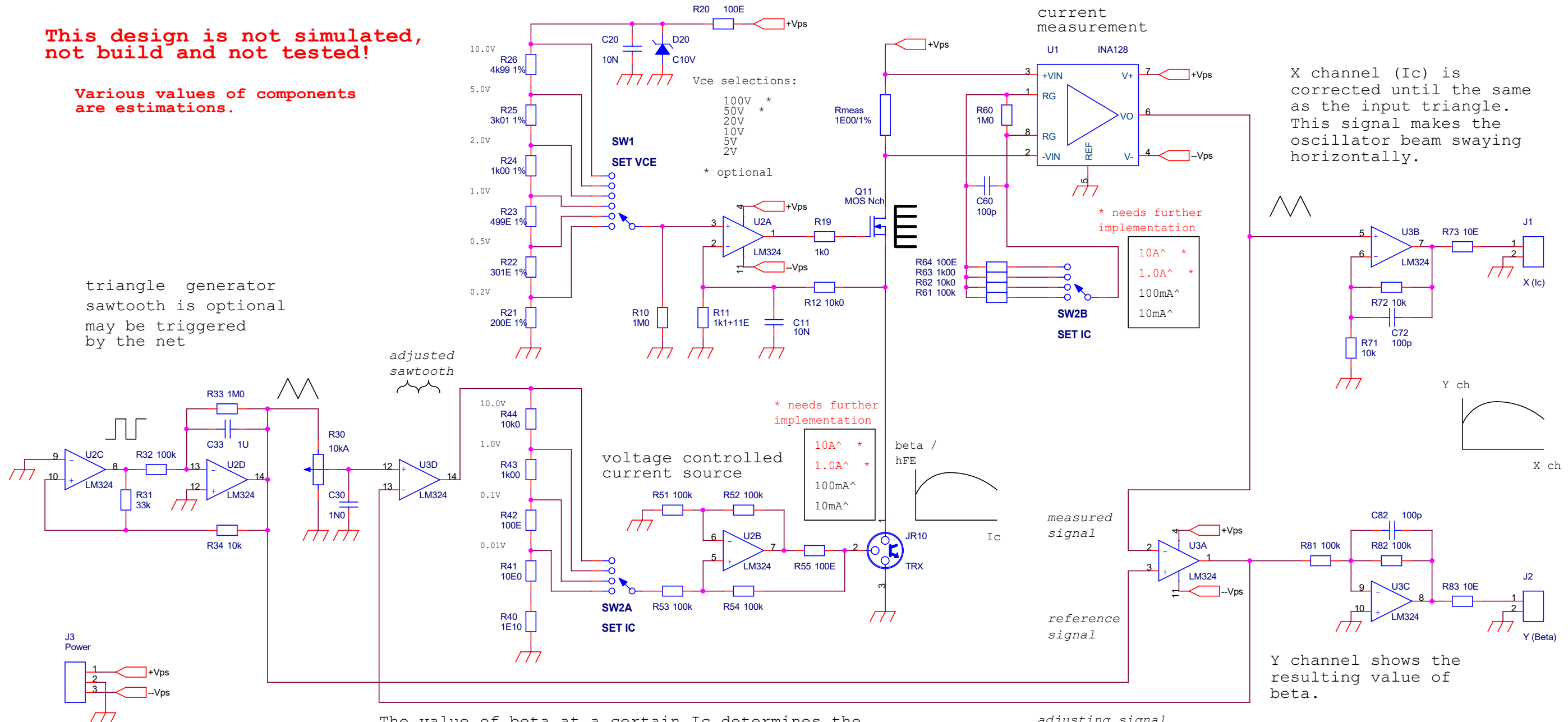


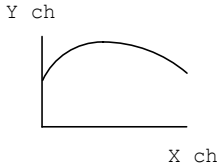
This design is not simulated,
not build and not tested!

Various values of components
are estimations.

triangle generator
sawtooth is optional
may be triggered
by the net



X channel (Ic) is
corrected until the same
as the input triangle.
This signal makes the
oscillator beam swaying
horizontally.



The value of beta at a certain Ic determines the
value of the adjusting (feedback) signal.
In order to have a linear X output, this adjusting
signal 'compensates' for the non-linear beta.

Y channel shows the
resulting value of
beta.