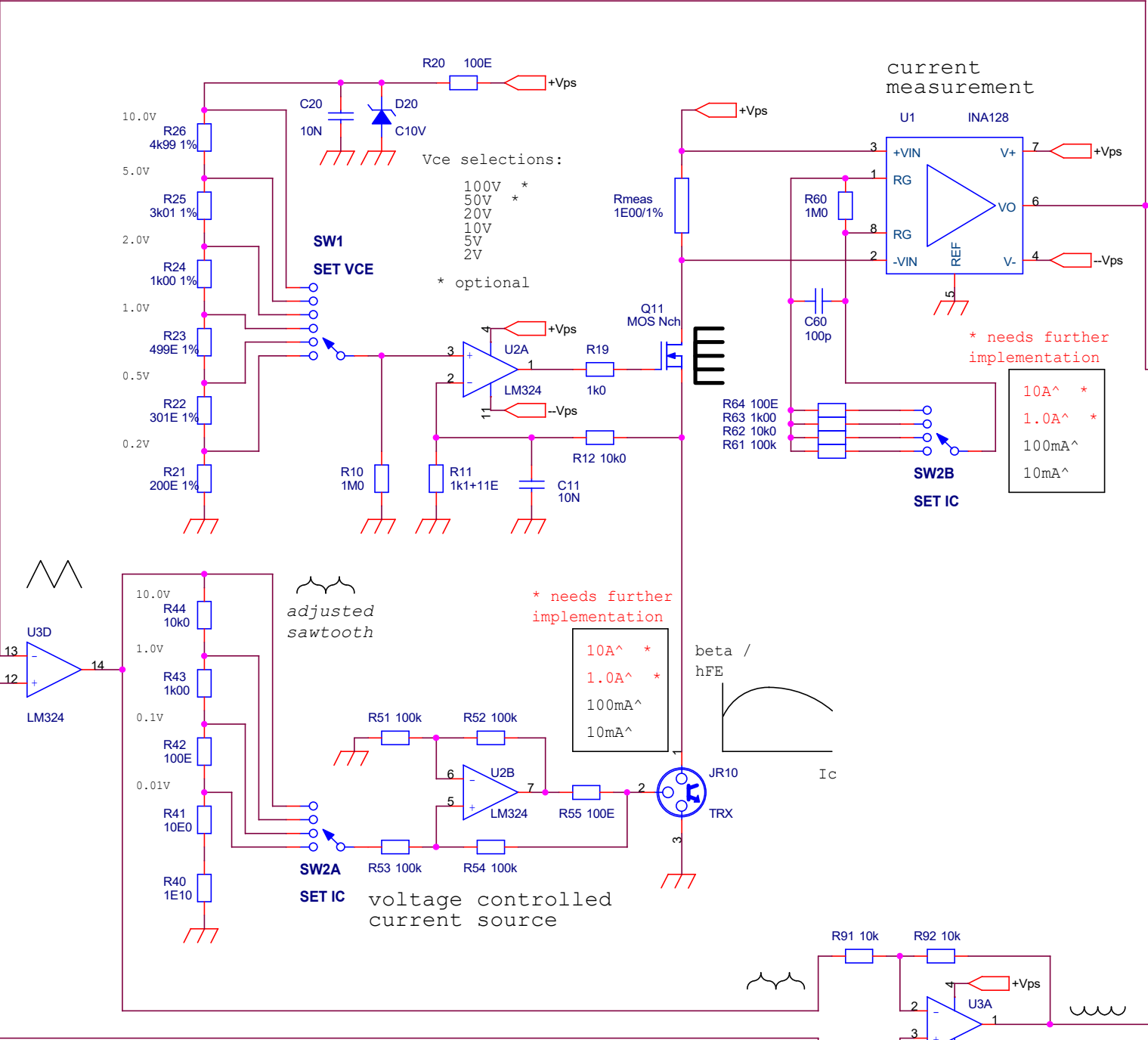
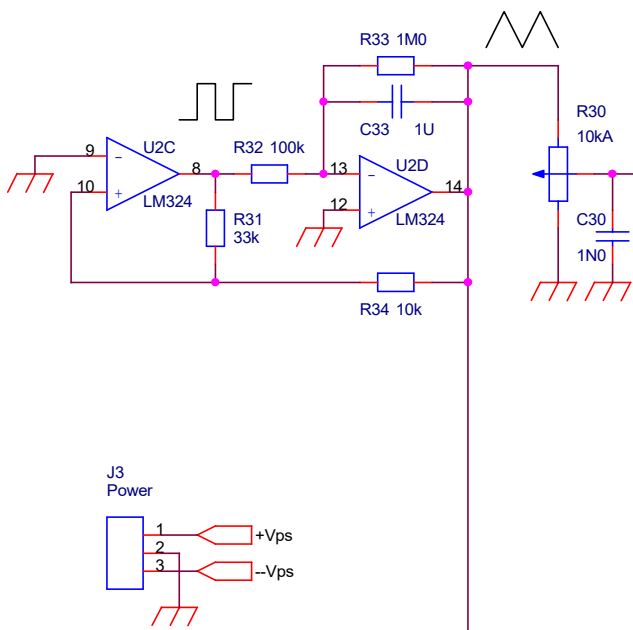


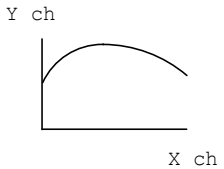
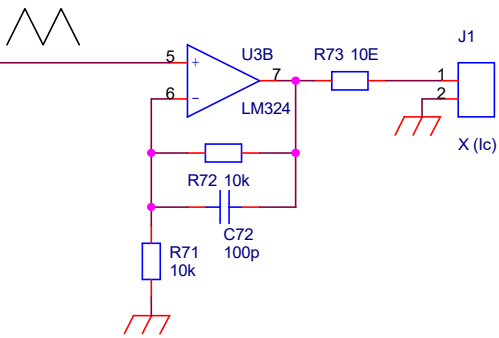
This design is not simulated,
not build and not tested!

Various values of components
are estimations.

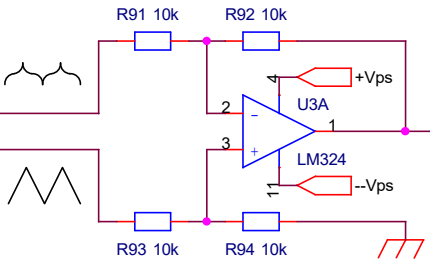
triangle generator
sawtooth is optional
may be triggered
by the net



X channel (Ic) is
corrected until the same
as the input triangle.
This signal makes the
oscillator beam swaying
horizontally.



The value of beta at a certain Ic determines the
value of the adjusted sawtoothsignal. (Output U3D)
In order to have a linear X output, this adjusting
signal 'compensates' for the non-linear beta.
The adjusted sawtooth is compared with the original
sawtooth - the resulting signal is the neccessary
'compensation', 'per tooth' . (Output U3A)



Y channel shows the
resulting value of
beta.

Title		
Beta Tracer (hFE)		
Size	Document Number	Rev
A3	Citizen 124032 (MP/dW) for DIYaudio 0723 (& Bernhard & Mark)	4.1
Date:	Monday, July 17, 2023	Sheet 1 of 1