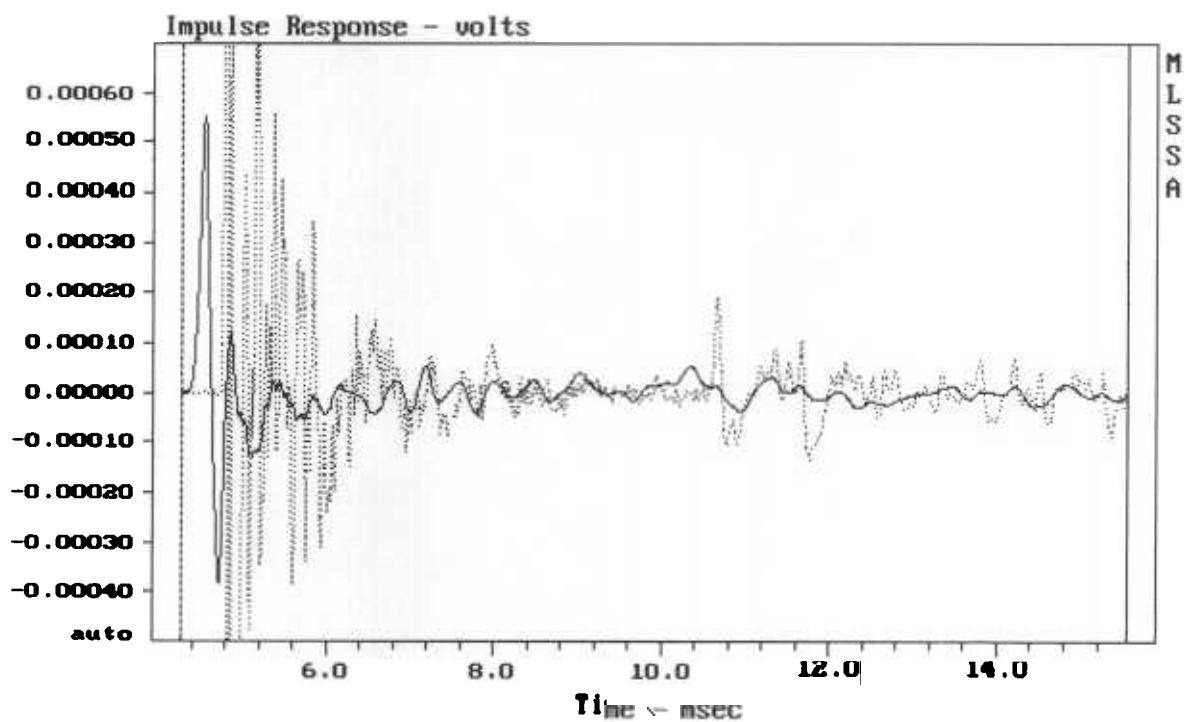


CURSOR: dy = 14.0821 x = 30007.1014 (2704)

EMINENCE BETA 12CX + SELENIUM D210T1

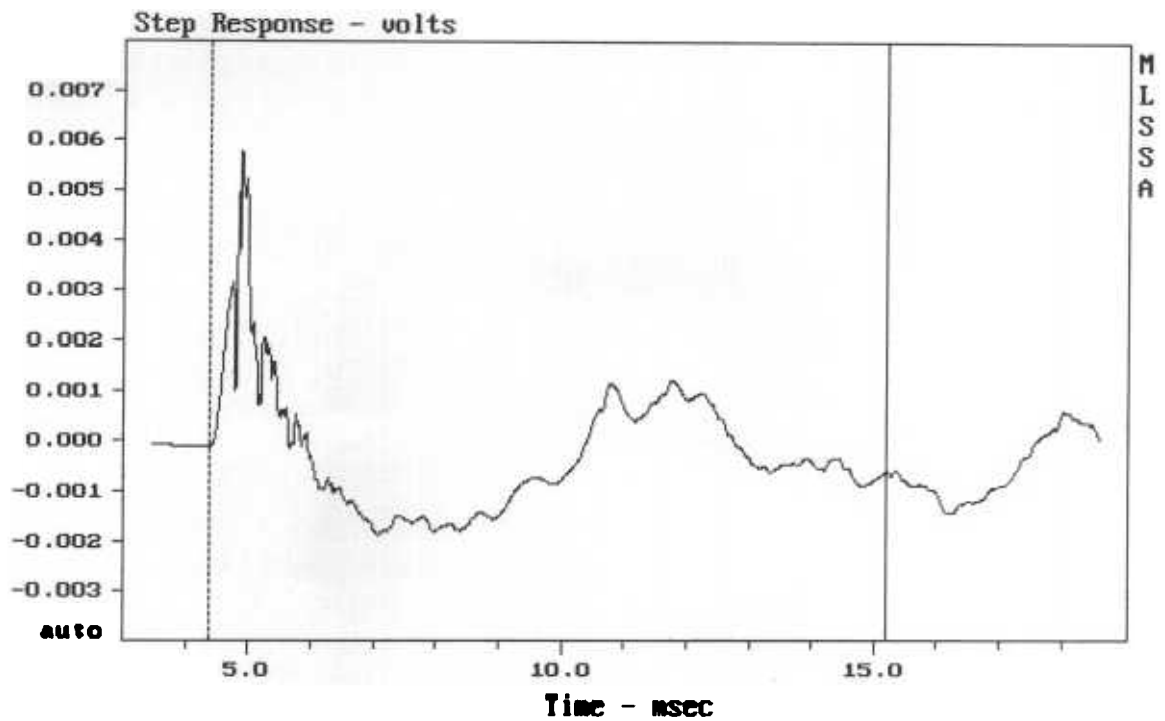
7-2-83 7:14 PM

MLSSA: Frequency Domain



CURSOR: dy = 8.89980e-006 x = 15.5540 (1414)

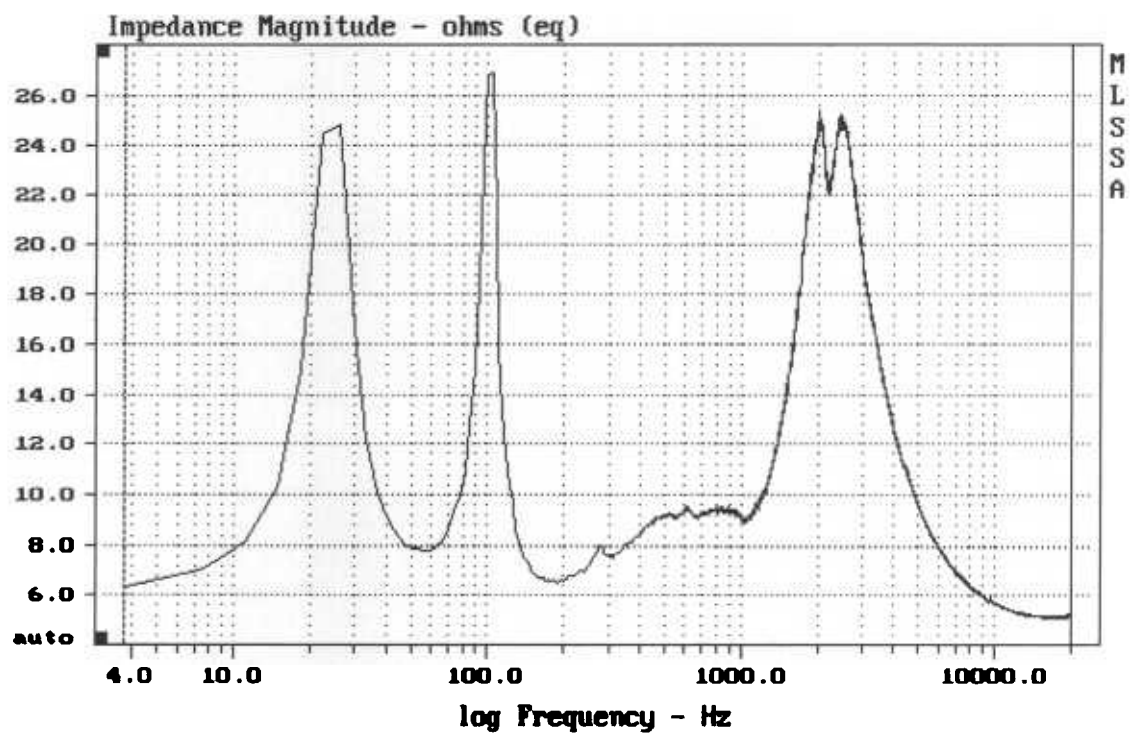
EMINENCE BETA 12CX + SELENIUM D210T1



ENINENCE BETA 12CX + SELENIUM D210T1

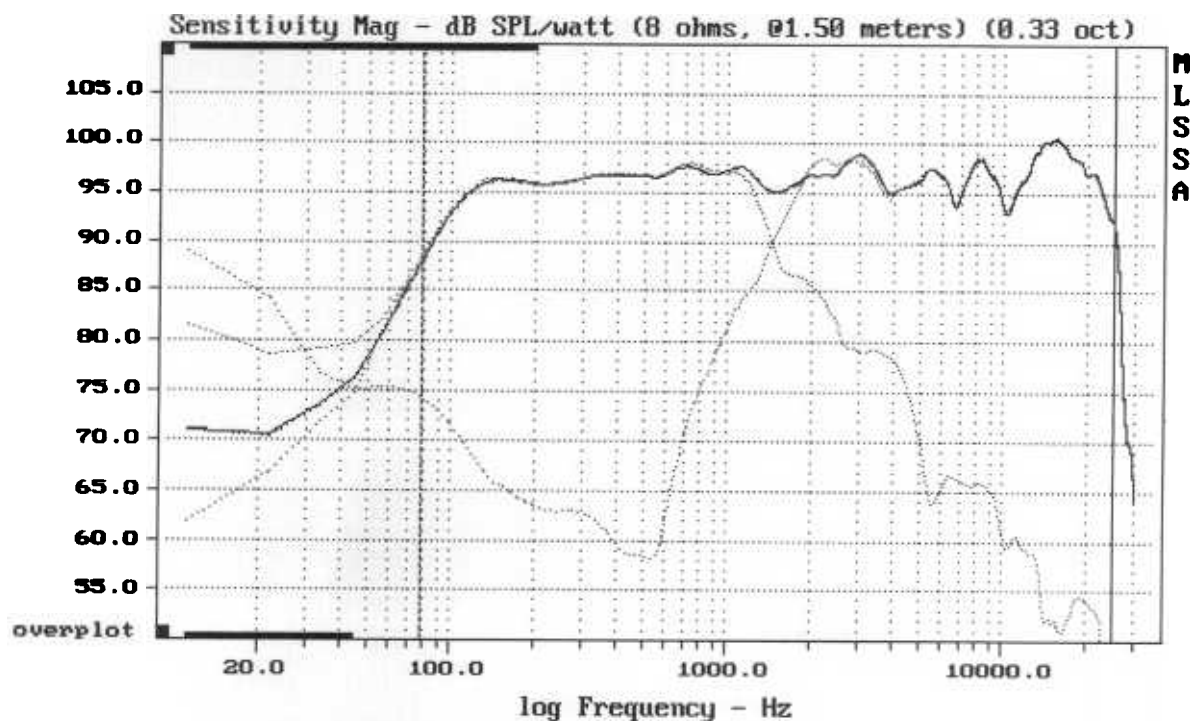
7-2-83 7:52 PM

MLSSA: Time Domain



mean: 8.057, rms: 9.418, std: 4.877, max: 26.9, min: 5.076

ENINENCE BETA 12CX + SELENIUM D210T1

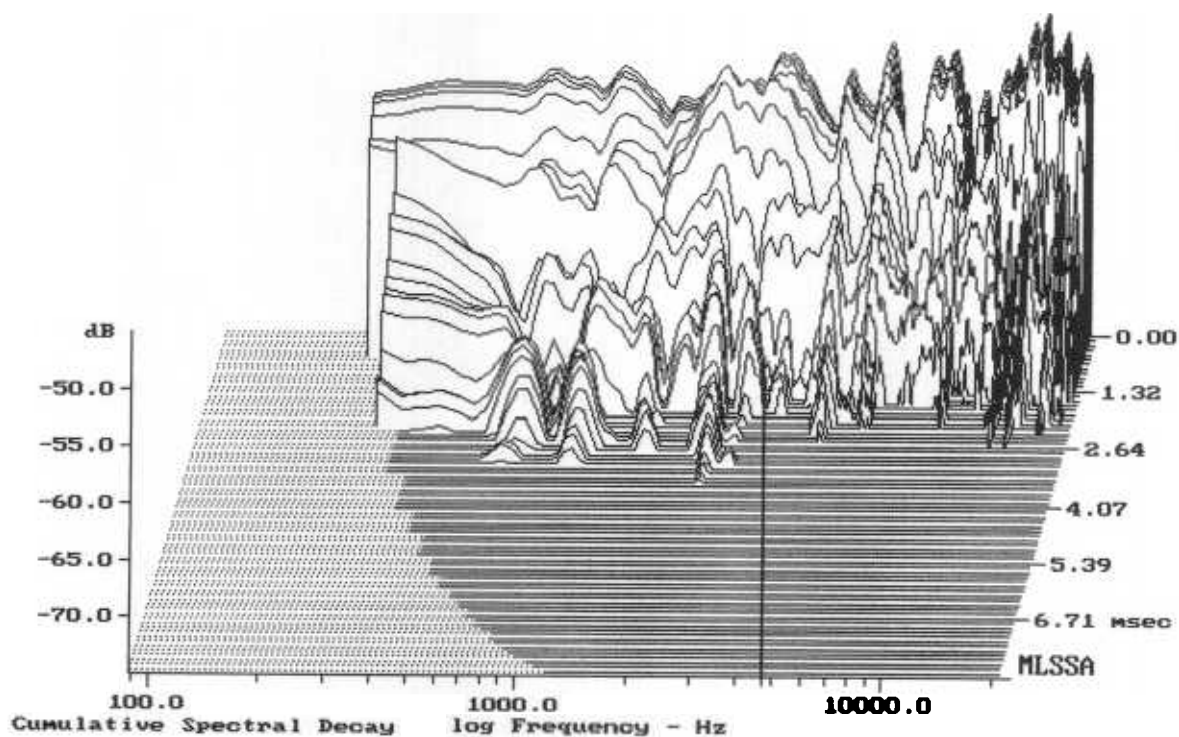


Level (78:25002 Hz) = 96.72 dB SPL/watt (8 ohms, @1.50 meters) (0.33 oct)

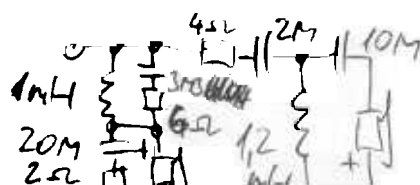
EMINENCE BETA 12CX + SELENIUM D210T1

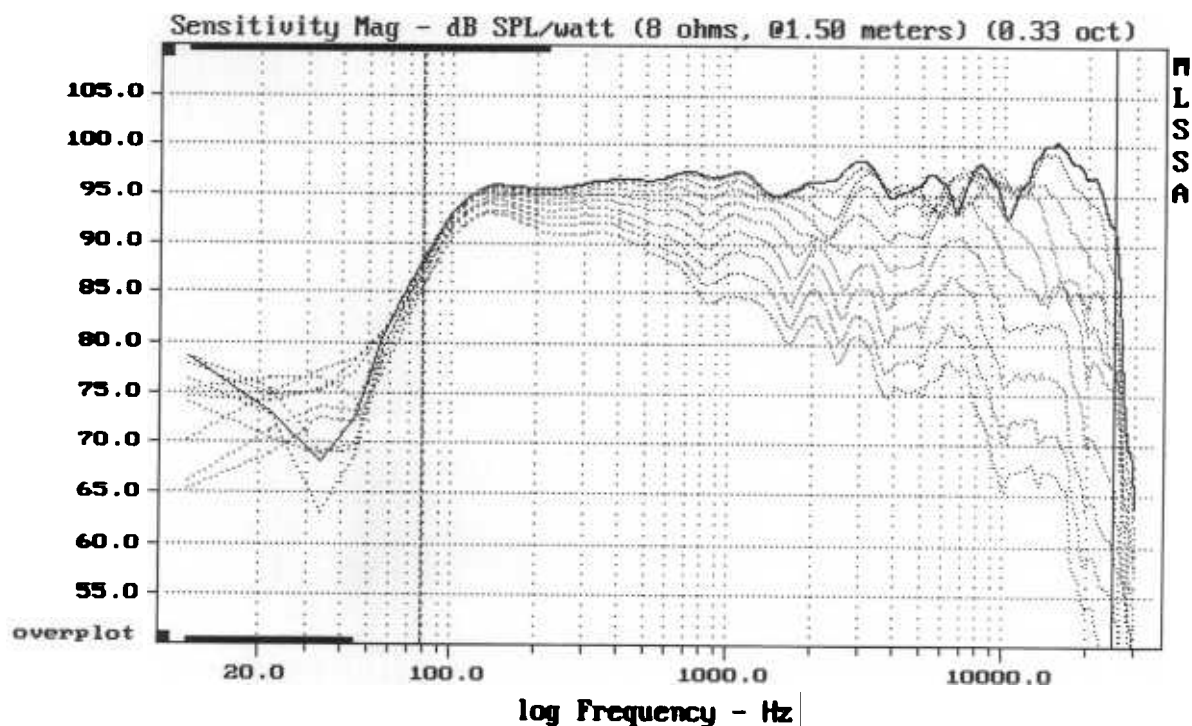
7-2-83 7:36 PM

MLSSA Frequency Domain



-74.14 dB, 2219 Hz (50), 3.300 msec (31)



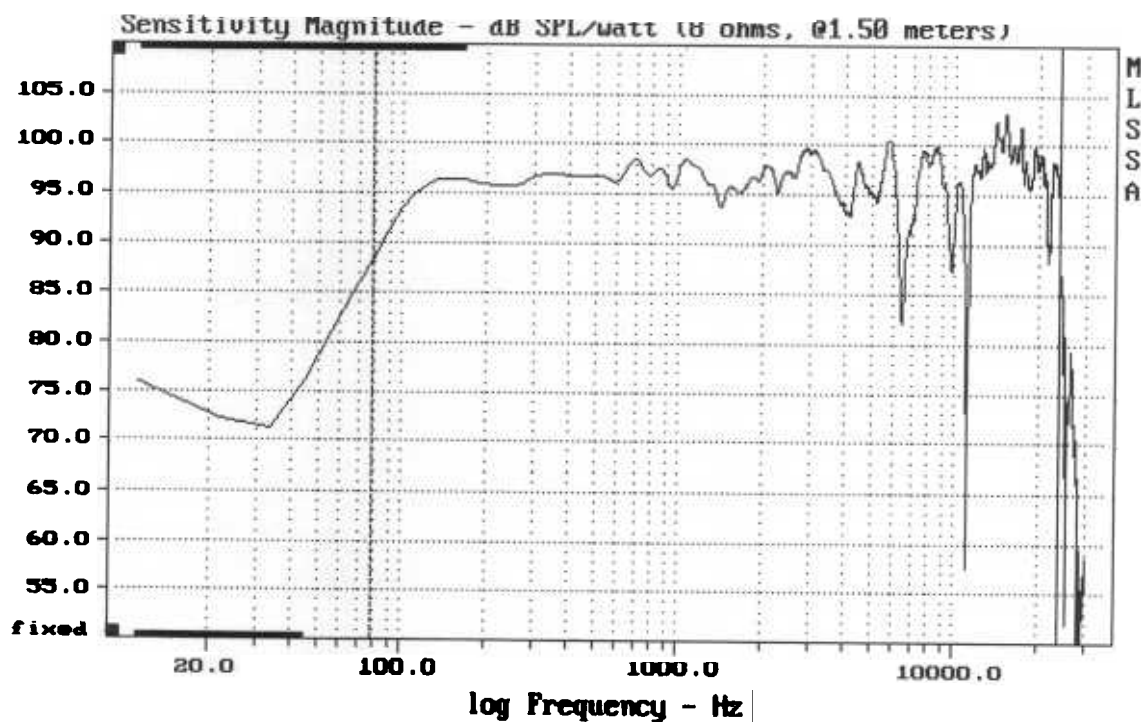


Overlay Compare: dev= +27/-15, std= 11, avg= -30

EMINENCE BETA 12CX + SELENIUM D210T1

7-2-83 7:49 PM

MLSSA: Frequency Domain



Level (78.24003 Hz) = 96.79 dB SPL/watt (8 ohms, @1.50 meters)

EMINENCE BETA 12CX + SELENIUM D210T1