

Service Manual

Created: 19 March 2020



EUROPOWER EP4000

**Professional 4,000-Watt Stereo Power Amplifier with
ATR (Accelerated Transient Response) Technology**

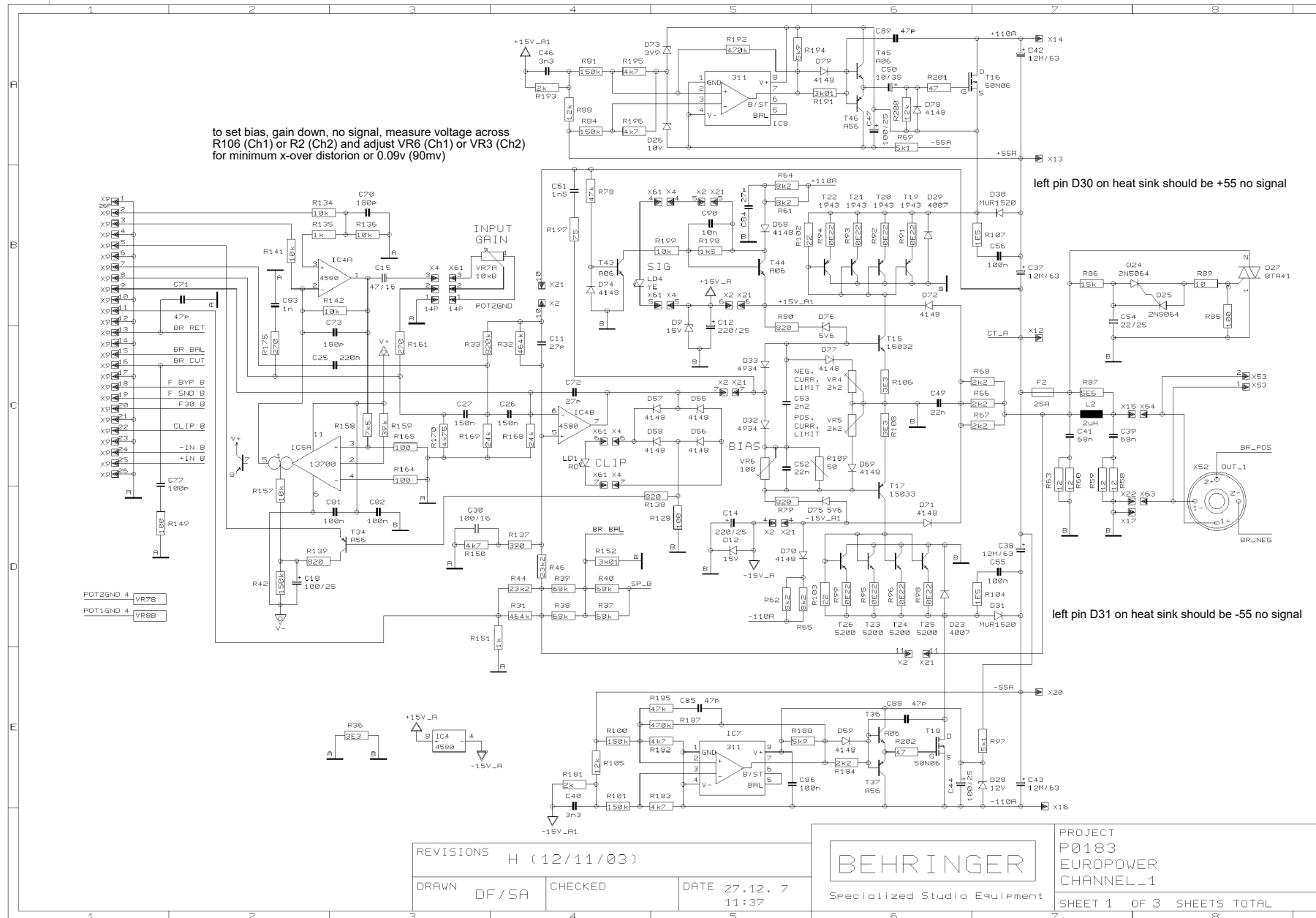
Specifications	2
PCB Schematic	3
Parts List	6
Exploded Drawing	17

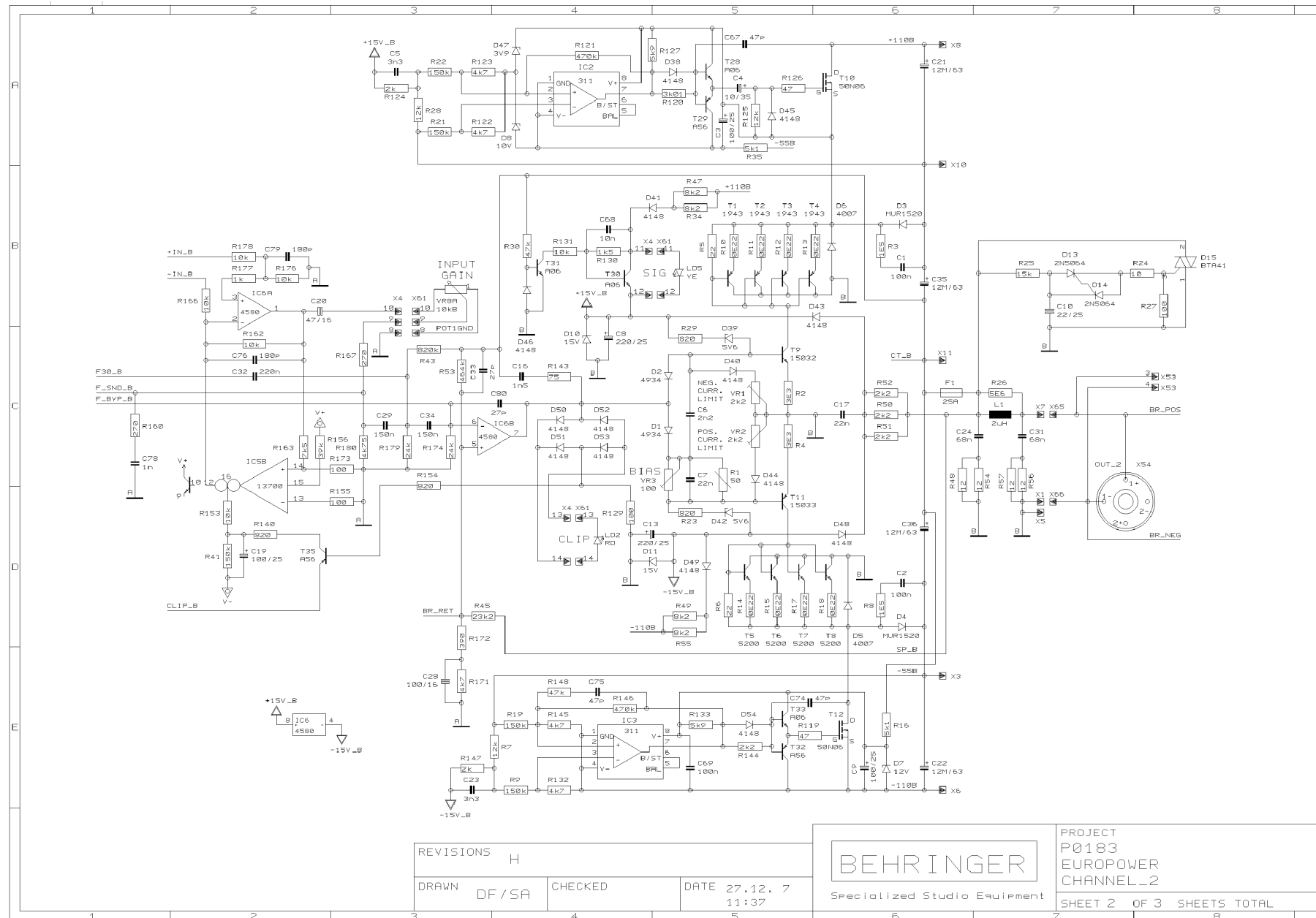
© 2020 MUSIC Group IP Ltd. All third party trademarks mentioned belong to their respective owners and are not affiliated with MUSIC Group IP Ltd. All information (including drawings and diagrams) contained in this document is the property of MUSIC Group IP Ltd., its subsidiaries or content providers, and is protected by intellectual property (copyright, trademark, patents, etc) laws, international treaty provisions and other laws. Any unauthorized disclosure, use, application, reproduction, modification, lease, sale, transmission or any other dealings in the information may violate applicable laws and result in civil and/or (where applicable) criminal liabilities and penalties.

EUROPOWER EP4000

Specifications

- 2 x 2,000 Watts into 2 Ohms; 2 x 1,400 Watts into 4 Ohms; 4,000 Watts into 4 Ohms (bridge mode)
- ATR (Accelerated Transient Response) technology for ultimate punch and clarity
- Switchable limiters offer maximum output level with reliable overload protection
- Detented gain controls for precise setting and matching of sensitivity
- Precise Power, Signal and Clip LEDs to monitor performance
- XLR and 1/4" TRS input connectors for compatibility with any source
- Professional speaker connectors and "touch-proof" binding posts support most speaker wiring systems
- Selectable low-frequency filters remove damaging infra-sound frequencies
- Independent DC and thermal overload protection on each channel automatically protects amplifier and speakers
- High-current toroidal transformer for ultra-high transient response and absolute reliability
- "Back-to-front" ventilation system including air filter for reliable operation
- "Built-like-a-tank," impact-resistant, all-steel 2U rackmount chassis
- 3-Year Warranty Program
- Designed and engineered in Germany







Service Assemblies

	Quantity	Unit	S.Sku	M.Sku	Description	Reference Designators	Notes
1			Q05-18303-02308	A09-18300-AD008	SPARE PART;P0183;REV:H;PCB ASSEMBLY;PCB:03;HI	[EXTRA SPARE]	
2			Q05-18307-02312	A09-18300-20008	SPARE PART;P0183;REV:H;INPUT;PCB ASSEMBLY;PCB:07;HI	[EXTRA SPARE]	
3			Q05-18306-02311	A09-18300-19008	SPARE PART;P0183;REV:H;OUTPUT;PCB ASSEMBLY;PCB:06;HI	[EXTRA SPARE]	
4			Q05-18301-04543	A09-18300-07008	SPARE PART;P0183;PCB ASSEMBLY;1;H;HI	[EXTRA SPARE]	
5			Q05-18304-02309	A09-18300-00008	SPARE PART;P0183;LED;PCB ASSEMBLY;4;H;HI	[EXTRA SPARE]	
6			Q05-18302-04544	A09-18300-00000	SPARE PART;P0183;PCB ASSEMBLY;2;H;HI	[EXTRA SPARE]	

Hi Pcb Assemblies

	Quantity	Unit	S.Sku	M.Sku	Description	Reference Designators	Notes
1	1.0000	PC	Q05-18305-04547	A05-18305-04547	PCB ASSEMBLY;P0183;PCB:05;REV:H;HAND INSERT;NO:927030		

Cable

	Quantity	Unit	S.Sku	M.Sku	Description	Reference Designators	Notes
1	0.3320	M	Q74-00000-00726	A74-00000-00726	WIRE;RAW FLAT CABLE;UL2651;AWG:28;POLES:26;GRAY;PIN1:RED;PITCH:1mm27		
2	1.0000	PC	Q74-00050-32726	A74-00050-32726	CABLE;FLAT;P:2mm54;LENGTH:320mm;AWG:28;FC3/FD;+10/- 0mm;POLES:26	[P0183:06: {1.0}{X67}]	
3	1.0000	PC	Q76-00002-41514	A76-00002-41514	CABLE;AC-CORD;LENGTH:1500 MM;POLES:3;VERSION:JP;2 mm2;LAP-31+730;IEC (C13);BLACK		
4	0.2260	M	Q81-00000-64623	A81-00000-64623	WIRE HARNESS;AWG:26;UL2468;1.5 MM;UL;PIN1 RED;FLAT RIBBON WIRE;POLES;11;PITCH:1mm5,PVC, 80C 300V		
5	1.0000	PC	Q81-12031-46842	A81-12031-46842	WIRE HARNESS;LENGTH:120mm;AWG:26;UL2468;P:2mm;ZEE;;HOUSING- BOARD IN CONNECTOR;POLES:14;PIN1 RED/OTHERS BLK	[P0183:04: {1.0}{X61}]	
6	1.0000	PC	Q81-21031-16842	A81-21031-16842	WIRE HARNESS;LENGTH:210mm;AWG:26;UL2468;P:2mm;ZEE;HOUSING- BOARD IN CONNECTOR;POLES:11;PIN1 RED/OTHERS BLK	[P0183:01: {1.0}{X2}]	
7	1.0000	PC	Q81-28030-36842	A81-28030-36842	WIRE HARNESS;LENGTH:280mm;AWG:26;UL2468;P:2mm;ZEE;HOUSING- BOARD IN CONNECTOR;POLES:3;PIN1 RED/OTHERS BLK	[P0183:03: {1.0}{X45}]	
8	1.0000	PC	Q81-40030-26842	A81-40030-26842	WIRE HARNESS;LENGTH:400mm;AWG:26;UL2468;P:2mm;ZEE;HOUSING- BOARD IN CONNECTOR;POLES:2;PIN1 RED/OTHERS BLK	[P0183:04: {1.0}{X62}]	
9	1.0000	PC	Q76-00000-13573	A76-00000-13573	CABLE;AC-CORD;3;AR;1500 MM;Plug + Connector:321+730;H05VV-F 3G0.75		(AR)
10	1.0000	PC	Q76-15062-45714	A76-15062-45714	CABLE;AC- CORD;W/POLYBAG;LENGTH:150cm;POLES:3;APPROVAL:CCC;HC103 + 227 IEC 53 (RVV) 3x0.75mm2 + HE109B		(CCC)
11	1.0000	PC	Q76-15042-05624	A76-15042-05624	CABLE;AC-CORD;W/POLYBAG;LENGTH:150cm;H05VV- F3G0.75MM2;VERSION:UK;SPEC.NO:05624		(UK)
12	1.0000	PC	Q76-00000-01873	A76-00000-01873	CABLE;AC-CORD;AWG:14;UL1571;3;1500 MM;CABL;AC- CORD;3P;AWG14;150cm		(UL)
13	1.0000	PC	Q76-00000-05305	A76-00000-05305	CABLE;AC-CORD;3;BR;1500 MM;Plug + Connector:375+730;H05VV-F 3G0.75		(BR1)
14	1.0000	PC	Q76-15212-03119	A76-15212-03119	CABLE;AC-CORD;W/POLYBAG;LENGTH:152cm;H05VV-F 3G 0.75MM2;VERSION:EU;SPEC.NO:03119		(EU)
15	1.0000	PC	Q76-18050-47490	A76-18050-06505	CABLE;AC-CORD;LENGTH:180cm;VERSION:SAA;PLUG:HE105 ISOLATED;SAA H05VV-F 3x0.75mm2;CONN.HP-3;PANYU		(SAA)
16	1.0000	PC	Q76-18050-47490	A76-18050-47490	CABLE;AC-CORD;LENGTH:180cm;VERSION:SAA;PLUG:HE105 ISOLATED;SAA H05VV-F 3x0.75mm2;CONN.HP-3;SPEC.NO:47490		(SAA)
17	1.0000	PC	Q76-00002-40369	A76-00002-40369	CABLE;AC-CORD;LENGTH:1500 MM;POLES:2;VERSION:JP;PLUGS:2POLES+CABLE;PSE VCTF 3X2.0MM^2;IEC (C13);BLACK;W/ POLYBAG		(JPHM)
18	0.0000	PC	Q76-15020-45715	A76-15020-45715	CABLE;AC- CORD;W/POLYBAG;LENGTH:150cm;POLES:3;APPROVALS:UL/CSA;PL UGS:PHP-301 +5JT14/3 105C BWG BLK PVC LEAD-FREE + PHS301		(UL)

Capacitor

	Quantity	Unit	S.Sku	M.Sku	Description	Reference Designators	Notes
1	8.0000	PC			CAP E;12mF;63V;PITCH:10mm;30mm x 50mm;PRECUT:3mm2 - 0/+0mm2	[P0183:01: {4.0}(C21-C22,C35-C36)]	*NOT available in DP
2	3.0000	PC			CAP CER;27 pF;50 V;C0G;5 %;SMD805	[P0183:01: {2.0}(C72,C80)]	*NOT available in DP
3	4.0000	PC			CAP CER;470pF;50V;10%;PITCH:5mm;DISC;VERTICAL 12.7-15-9mm	[P0183:06: {4.0}(C63-C66)]	*NOT available in DP
4	2.0000	PC			CAP CER;10 nF;50 V;X7R;5 %;SMD805	[P0183:01: {1.0}(C68)]	*NOT available in DP
5	7.0000	PC			CAP CER;47 pF;50 V;C0G;5 %;SMD805	[P0183:01: {4.0}(C67,C71,C74-C75)]	*NOT available in DP
6	4.0000	PC			CAP CER;180pF;50V;20%;SMT805	[P0183:01: {4.0}(C70,C73,C76,C79)]	*NOT available in DP
7	2.0000	PC			CAP CER;1nF;50V;10%;SMT805;X7R	[P0183:01: {2.0}(C78,C83)]	*NOT available in DP
8	4.0000	PC			CAP CER;100nF;50V;X7R;10%;SMT805	[P0183:01: {3.0}(C69,C81-C82)]	*NOT available in DP
9	2.0000	PC			CAP CER;100pF;100V;C0G;10%;SMD805	[P0183:01: {1.0}(C77)]	*NOT available in DP
10	2.0000	PC			CAP FILM;2nF2;50V;MPF;5%;PITCH:5mm;BOX;VERTICAL 12.7-15-9mm	[P0183:01: {1.0}(C6)]	*NOT available in DP
11	4.0000	PC			CAP FILM;3nF3;50V;MPF;10%;PITCH:5mm;BOX;VERTICAL 12.7-15-9mm	[P0183:01: {2.0}(C5,C23)]	*NOT available in DP
12	4.0000	PC			CAP FILM;22nF;50V;MPF;5%;PITCH:5mm;BOX;VERTICAL 12.7-15-9mm	[P0183:01: {2.0}(C7,C17)]	*NOT available in DP
13	4.0000	PC			CAP FILM;150nF;63V;MPF;5%;PITCH:5mm;BOX;VERTICAL 12.7-15-9mm	[P0183:01: {2.0}(C27,C29)]	*NOT available in DP
14	2.0000	PC			CAP FILM;220nF;63V;MPF;5%;PITCH:5mm;BOX;VERTICAL 12.7-15-9mm	[P0183:01: {1.0}(C25)]	*NOT available in DP
15	2.0000	PC			CAP E;BIPOLAR;47uF;16V;20%;SIZE:6mm3x11mm;PITCH:2mm5;VERTICAL 12.7-15-9mm	[P0183:01: {1.0}(C15)]	*NOT available in DP
16	2.0000	PC			CAP E;BIPOLAR;22uF;25V;20%;SIZE:5mmx11mm;PITCH:2mm5;VERTICAL 12.7-15-9mm	[P0183:01: {1.0}(C10)]	*NOT available in DP
17	2.0000	PC			CAP E;BIPOLAR;100uF;16V;20%;SIZE:8mmx11mm5;PITCH:3mm5;PRECUT: 3mm2 - 0/+0mm2	[P0183:01: {2.0}(C28,C30)]	*NOT available in DP
18	1.0000	PC			CAP E;4uF7;250V;PITCH:3mm5;8mm x 11mm5;PRECUT:3mm2 - 0/+0mm2	[P0183:02: {1.0}(C48)]	*NOT available in DP
19	2.0000	PC			CAP CER;27pF;200V;10%;PITCH:5mm;DISC;VERTICAL 12.7-15-9mm	[P0183:01: {2.0}(C11,C33)]	*NOT available in DP
20	4.0000	PC			CAP FILM;220nF;250V;MPF;PITCH:7mm5; PRECUT:3mm2 +/-0mm5	[P0183:03: {4.0}(C57,C59,C61-C62)]	*NOT available in DP
21	2.0000	PC			CAP FILM;1nF5;250V;MPF;5%;PITCH:5mm;VERTICAL 12.7-15-9mm	[P0183:01: {1.0}(C16)]	*NOT available in DP
22	4.0000	PC			CAP FILM;68nF;250V;MPF;5%;PITCH:5mm;VERTICAL 12.7-15-9mm	[P0183:01: {2.0}(C24,C31)]	*NOT available in DP
23	4.0000	PC			CAP FILM;100nF;250V;MPF;5%;PITCH:5mm;VERTICAL 12.7-15-9mm	[P0183:01: {2.0}(C1-C2)]	*NOT available in DP
24	1.0000	PC			CAP FILM;47nF;400V;MPF;10%;PITCH:7mm5;BOX;PRECUT:3mm1 +/- 0mm5	[P0183:03: {1.0}(C58)]	*NOT available in DP
25	6.0000	PC			CAP E;100uF;25V;PITCH:2mm5;6mm3 x 11mm;105C;VERTICAL 12.7-15-9mm	[P0183:01: {4.0}(C3,C9,C18-C19)]	*NOT available in DP
26	1.0000	PC			CAP E;1mF;35V;PITCH:5mm;13mm x 21mm;105C;VERTICAL 12.7-15-9mm	[P0183:03: {1.0}(C60)]	*NOT available in DP
27	2.0000	PC			CAP E;10uF;50V;PITCH:2mm5;5mm x 11mm;105C;VERTICAL 12.7-15-9mm	[P0183:01: {1.0}(C4)]	*NOT available in DP
28	1.0000	PC			CAP E;47uF;50V;PITCH:2mm5;6.3mmx11mm;VERTICAL 12.7-15-9mm	[P0183:02: {1.0}(C45)]	*NOT available in DP
29	4.0000	PC			CAP E;220uF;25V;PITCH:3mm5;8mm x 12mm;PRECUT:3mm2 - 0/+0mm2;105C	[P0183:01: {4.0}(C8,C12-C14)]	*NOT available in DP

Circuit Protector

	Quantity	Unit	S.Sku	M.Sku	Description	Reference Designators	Notes
1	1.0000	PC	R20-50115-34903	B20-50115-34903	CIRCUIT BREAKER;15A;250V;SHAPE:ROUND;(TYCO)		
2	4.0000	PC	R21-17311-53200	B21-17311-53200	FUSE CLIP;250V;SERIES;GSA/MDA;PLATING;ZINC		
3	2.0000	PC	R22-00624-25002	B22-00614-25002	FUSE;25A;250V;FAST BLOW;6mm35 x 31mm8	[P0183:01: {1.0}(F1)]	
4	1.0000	PC	R20-50115-34903	B20-50115-34903	CIRCUIT BREAKER;15A;250V;SHAPE:ROUND;(TYCO)		(UL)
5	1.0000	PC	R20-50108-34603	B20-50108-34603	CIRCUIT BREAKER;8A;250V;SHAPE:ROUND;		(EU, UK, SAA, CCC, AR, BR1)

Coil

	Quantity	Unit	S.Sku	M.Sku	Description	Reference Designators	Notes
1	2.0000	PC	R30-02005-21093	B30-02005-21093	COIL;AIR RADIAL;2uH;PITCH:15mm;AWG14;(EP1500-COIL_2UH-REV.A,DWG)	[P0183:01: {1.0}(L1)]	

Connector

	Quantity	Unit	S.Sku	M.Sku	Description	Reference Designators	Notes
1	2.0000	PC	R80-03440-44694	B80-14440-01101	CONNECTOR;SPEAKON;MALE;STRAIGHT;POLES:4;STYLE:NL4MDV;(C HUN-SHENG HP-01-EP)	[P0183:05: {2.0}(X52,X54)]	
2	18.0000	PC	R84-30060-06009	B84-30060-06009	JACKET;FOR 6mm35 AMP CONNECTOR;PVC;STRAIGHT;DIAMETER:4mm		
3	18.0000	PC	R84-32050-05839	B84-32050-05839	CRIMP CONNECTOR;AMP;RECEPTABLE;6mm3 x 7mm5;AWG 14-18;WIRE MOUNT;STRAIGHT;250 SERIES		
4	31.0000	PC	R84-39000-03120	B84-39000-03120	CONNECTOR;AMP;PCB;PCB MOUNT;PITCH:5mm;WIDTH:6mm3	[P0183:01: {8.0}(X1,X3,X5-X8,X10-X11)]	
5	1.0000	PC	R84-42050-00155	B84-42050-00155	CRIMP CONNECTOR;LUG;INNER DIA:4mm3;AWG 14-18;WIRE MOUNT;STRAIGHT		
6	2.0000	PC	R95-01340-03300	B95-01340-03300	CONNECTOR;XLR;SOCKET;FEMALE;STRAIGHT;POLES:3	[P0183:06: {2.0}(X56,X59)]	

Diode

	Quantity	Unit	S.Sku	M.Sku	Description	Reference Designators	Notes
1	13.0000	PC			DIODE;1N4007;DO41;HORIZONTAL 26-6mm;Al	[P0183:1: {4.0}(D5-D6,D16-D17)]	*NOT available in DP
2	4.0000	PC			DIODE;1N4934;DO41; (ONLY CHRYSTAL FIELD OR MCC)	[P0183:01: {2.0}(D1-D2)]	*NOT available in DP
3	37.0000	PC			DIODE;LL4148;LL34;TEMIC OR FC;SMD	[P0183:01: {18.0}(D38,D40-D41,D43-D46,D48-D58)]	*NOT available in DP
4	2.0000	PC			DIODE;ZD10V0;BZX85C10;DO41	[P0183:01: {1.0}(D8)]	*NOT available in DP
5	2.0000	PC			DIODE;ZD12V0;BZX85C12;DO41	[P0183:01: {1.0}(D7)]	*NOT available in DP
6	6.0000	PC			DIODE;ZD15V0;BZX85C15;DO41	[P0183:01: {4.0}(D9-D12)]	*NOT available in DP
7	2.0000	PC			DIODE;ZMM03V9;SMD1206	[P0183:01: {1.0}(D47)]	*NOT available in DP
8	4.0000	PC			DIODE;ZMM05V6;SMD;MiniMELF:SOD-80	[P0183:01: {2.0}(D39,D42)]	*NOT available in DP
9	4.0000	PC			DIODE;DPG15I200PA;TO220AC	[P0183:01: {2.0}(D3-D4)]	*NOT available in DP
10	4.0000	PC	X80-31272-50400	H80-31272-50400	RECTIFIER;BRIDGE;KBPC2504W		

Hardware

	Quantity	Unit	S.Sku	M.Sku	Description	Reference Designators	Notes
1	1.0000	PC			CABLE TIE;WIDTH:3mm;LENGTH:150mm		*NOT available in DP
2	10.0000	PC			CABLE TIE;NYLON;4in;COLOR:		*NOT available in DP
3	11.6300	G			THERM-GREASE;COLOR:WHT;SPEC.NO:09286		*NOT available in DP
4	1.7600	G			SCREWLOCK;SPEC.NO:01090		*NOT available in DP
5	1.0000	PC			HEX. NUT;INNER DIA;M4mm;SURFACE:ZINC		*NOT available in DP
6	12.0000	PC			HEX. NUT;INNER DIA;M5mm;SURFACE:ZINC		*NOT available in DP
7	1.0000	PC			HEX. NUT;INNER DIA;M8mm;SURFACE:ZINC		*NOT available in DP
8	2.0000	PC			HEX. NUT;FOR JACK;M 3/8in;HEXWRENCH:11mm;THICKNESS:2mm;SURFACE:NICKEL/SLV		*NOT available in DP
9	8.0000	PC			SCREW;M;3 MM;15 MM;PAN WASHER;ZINC;BLUE/WHITE;PHILIPS REC.;0.5 MM;M3mm*15mm;HEAD:PAN&SPRING WASHER;BLUE/ZINC		*NOT available in DP
10	19.0000	PC			SCREW;M;DIA:3 MM;LEN:8 MM;PAN DIA 5mm5;OD:5.5 MM;ZINC NICKEL;BLACK;CROSS REC.;PITCH:0.5 MM;WITH ASSEMBLY INTERNAL TEETH WASHER		*NOT available in DP
11	12.0000	PC			SCREW;M3mm*10mm;HEAD:PAN SPRING WASHER;INSERT:PHILIPS REC.;SURFACE:SILVER/NIC		*NOT available in DP
12	4.0000	PC			SCREW;BT3mm*8mm;HEAD:PAN;INSERT:PHILLIPS REC.;SURFACE:BLACK/ZINC		*NOT available in DP
13	19.0000	PC			SCREW;M3mm*8mm;HEAD:PAN;INSERT:PHILLIPS REC.;SURFACE:BLACK/ZINC		*NOT available in DP
14	2.0000	PC			SCREW;M3mm*8mm;HEAD:FLAT;INSERT:PHILLIPS REC.;SURFACE:ZINC/BLACK		*NOT available in DP
15	3.0000	PC			SCREW;M3mm*10mm;HEAD:PAN;INSERT:PHILIPS REC.;SURFACE:BLACK/ZINC		*NOT available in DP
16	21.0000	PC			SCREW;M4mm*5mm;HEAD:PAN;INSERT:PHILIPS REC.;SURFACE:BLACK/ZINC		*NOT available in DP
17	1.0000	PC			SCREW;M4mm*10mm;HEAD:BINDING;INSERT:PHILIPS REC.;SURFACE:SILVER/ZINC		*NOT available in DP
18	4.0000	PC			SCREW;M4mm*35mm;HEAD:PAN;INSERT:PHILIPS REC.;SURFACE:BLACK/ZINC		*NOT available in DP
19	4.0000	PC			SCREW;M5mm*25mm;HEAD:PAN;INSERT:PHILIPS REC.;SURFACE:BLACK/ZINC		*NOT available in DP
20	1.0000	PC			SCREW;M8mm*73mm;HEAD:PAN;INSERT:PHILIPS REC.;SURFACE:BLACK/ZINC		*NOT available in DP
21	6.0000	PC	V89-07000-02251	F89-07000-02251	INSULATION SHEET;SI-RUBBER;TO220 X 2;W/HOLES		
22	1.0000	PC			FAN SHIELD;EP1500;DWG.NO:37535;(EP1500-FAN_SHIELD-REVC.DWG)		*NOT available in DP
23	8.0000	PC			CLAMP 01;FOR IC;36mm*10mm*5mm;(MET_CLAMP-REVA.DWG);MATERIAL:1.2mm SECC		*NOT available in DP
24	1.0000	PC			STUD;THREAD-DIA;3mm;LENGTH:20mm4;INT/INT		*NOT available in DP
25	10.0000	PC			STUD;THREAD-DIA;3mm;LENGTH:22mm5;INT/INT		*NOT available in DP
26	3.0000	PC			STUD;THREAD-DIA;3mm;LENGTH:24mm2;INT/INT		*NOT available in DP
27	0.2300	M			SHRINKING TUBE;INNER DIA;1mm;SPEC.NO:43217		*NOT available in DP
28	0.0800	M			SHRINKING TUBE;INNER DIA;6mm;SPEC.NO:01099		*NOT available in DP
29	1.0000	PC	V97-17000-29882	F97-17000-29882	FOAM PAD;EP1500 EP2500;MATERIAL:K30R30F9;DWG.NO:29882;(EP1500-FOAM-REVB.DWG)		
30	12.0000	PC			BUSHING;MINIATURE;NYLON;3*1mm07;DWG.NO:28174;(SC-PLA-NYLBUSHM3x1_07-REVA.DWG)		*NOT available in DP
31	4.0000	PC	V99-00200-00110	F99-00200-00110	SCREW;BINDING POST;DST.NO:002;DPT.NO:00110;(R20-BINDING-SCREW-REVB.DWG)		

Ic

	Quantity	Unit	S.Sku	M.Sku	Description	Reference Designators	Notes
1	2.0000	PC	S73-59458-00508	C73-00000-29050	IC;OPAMP;SMD;SOP;8;Rohm:BA4580RF-E2	[P0183:01: {2.0}{(IC4,IC6)}]	
2	1.0000	PC	S73-22370-00516	C73-22370-00516	IC;OPAMP OPAMP;V13700M;SOP	[P0183:01: {1.0}{(IC5)}]	
3	4.0000	PC	S78-55031-10508	C78-55031-10508	IC;COMPARATOR;LM311;SOP	[P0183:01: {2.0}{(IC2-IC3)}]	

Led

	Quantity	Unit	S.Sku	M.Sku	Description	Reference Designators	Notes
1	1.0000	PC	U10-63565-00594	E10-63565-00594	LED HIB;5mm ROUND;GREEN	[P0183:04: {1.0}{(LD3)}]	
2	2.0000	PC	U10-69585-04384	E10-69585-04384	LED HIB;5mm ROUND;YELLOW	[P0183:04: {2.0}{(LD4-LD5)}]	
3	2.0000	PC	U12-67630-00595	E12-67630-00595	LED;5mm ROUND;RD	[P0183:04: {2.0}{(LD1-LD2)}]	

Metal Part

	Quantity	Unit	S.Sku	M.Sku	Description	Reference Designators	Notes
1	1.0000	PC	Q63-01000-22288	A63-01000-22288	METAL;HEATSINK;P0195;DWG.NO:22288;(R21-EP1500-HEATSINK03-REVB.DWG)	[P0183:03: {1.0}{(A1)}]	
2	1.0000	PC	Q63-01000-31434	A63-01000-31434	METAL;HEATSINK;P0183;BIG;DWG.NO:31434;(EP2500-HEATSINKBIG01-REVC.DWG)		
3	1.0000	PC	Q63-01000-31435	A63-01000-31435	METAL;HEATSINK;P0183;BIG;DWG.NO:31435;(EP2500-HEATSINKBIG02-REVC.DWG)		
4	2.0000	PC	Q65-00000-66666	A65-00000-66666	METAL;P0195;STEEL 2.0mm;ANGLE;STAMPING;GLOSS SEMI;SPRAY METALLIC;DARK GRAY;RACK ANGLE;REV:C		
5	4.0000	PC	Q65-00200-00378	A65-00200-00378	METAL;NUT;BINDING POST;DST.NO:002;DPT.NO:00378;(P0195-BINDING-NUT-REVB.)		
6	1.0000	PC	Q65-09000-25912	A65-09000-25912	METAL;FAN GUARD;DIAMETER:80mm;TYP:G;NO:01;SPEC.NO:25912		
7	1.0000	PC	Q65-30000-21084	A65-30000-21084	METAL;SHEET;EP1500 EP2500;OUTPUT;DWG.NO:21084;(R20-EP1500-OUTPUT_SHEET-REVA.DWG)		
8	1.0000	PC	Z02-00000-33981	J02-00000-33981	METAL;P0A37;BOTTOM CASE;DARK GRAY METALLIC;F004		
9	1.0000	PC	Z02-00000-33982	J02-00000-33982	METAL;P0A37;TOP COVER;STAMPING;DARK GRAY METALLIC		

Plastic Part

	Quantity	Unit	S.Sku	M.Sku	Description	Reference Designators	Notes
1	4.0000	PC	W51-01200-01762	G51-01200-01762	RUBBER FOOT;STANDARD;SELF-ADHESIVE;COLOR:BLK;DWG.NO:01762		
2	2.0000	PC	W52-20500-20431	G52-00200-09344	PLASTIC;POT KNOB 01;DST.NO:002;DPT.NO:09344;(POTKNOB01-REVB.DWG)		
3	5.0000	PC	W58-00200-11449	G58-00200-11449	LED SPACER;TYP:4;20mm;DST.NO:002;DPT.NO:11449;(LED-SPACER20MM-REVB.DWG)		
4	2.0000	PC	W58-00200-31861	G58-00200-31861	PLASTIC;CAP;BINDING POST;RED;DWG.NO:31861;(BINDING-CAP_RED-REVB.DWG)		
5	2.0000	PC	W58-00200-32252	G58-00200-32252	PLASTIC;CAP;BINDING POST;DWG.NO:32252;(BINDING-CAP_BLACK-REVB.DWG)		
6	1.0000	PC	W58-00300-00424	G58-00300-00424	PLASTIC;INSULATOR;BINDING POST;DST.NO:003;DPT.NO:00424;(BINDING-PLA_INSU-REVC.DWG)		
7	2.0000	PC	W58-51100-21316	G58-51100-21316	PLASTIC;KNOB;BINDING POST;DWG.NO:21316;(BINDING-KNOB_BLACK-REVA.DWG)		
8	2.0000	PC	W58-51100-21459	G58-51100-21459	PLASTIC;KNOB;BINDING POST;RED;DWG.NO:21459;(BINDING-KNOB_RED-REVA.DWG)		
9	1.0000	PC	W58-67300-23925	G58-67300-23925	PLASTIC;PAD;P0195;COLOR:BLK;DWG.NO:23925;(EP1500-RUBBER_PAD-REVA.DWG)		
10	2.0000	PC	W58-73400-21315	G58-73400-21315	PLASTIC;BOTTOM INSULATOR;BINDING POST;DWG.NO:21315;(AMD4-BINDING-INSU_BOTTOM-REVA.DWG)		
11	1.0000	PC	Y68-00100-13364	I68-00100-13364	PLASTIC;COVER;BINDING POST;PRINTED;FST.NO:001;DPT.NO:13364;(BINDING-PLA_COVER-REVB.DWG)		
12	1.0000	PC	Y68-00100-13365	I68-00100-13365	PLASTIC;COVER;BINDING POST;PRINTED;FST.NO:001;DPT.NO:13365;(BINDING-PLA_COVER-REVB.DWG)		(UL)

Plug Socket

	Quantity	Unit	S.Sku	M.Sku	Description	Reference Designators	Notes
1	1.0000	PC	W61-65226-03294	G61-65226-03294	BOX HEADER;POLES:26;2 ROW;STRAIGHT;PITCH:2mm54;SCM-26S	[P0183:01: {1.0}{X9}]	
2	1.0000	PC	W61-75226-05290	G61-75226-05290	CABLE HEADER;POLES:26;2 ROW;IDE;STRAIGHT;PITCH:2mm54;FC-26P		
3	1.0000	PC	W61-85226-08163	G61-85226-08163	TRANSITION PLUG;FLAT CABLE;POLES:26;ROWS:2;STRAIGHT;PITCH:2mm54;BLACK;FD-26P		
4	2.0000	PC	W64-01211-03174	G64-01211-03174	PLUG;JACK STEREO 6mm3;STRAIGHT SOLDER;W/O MET.RNG.;MET.BUSH.;NO NUT/WASHER;(JY-6351G-02-250)	[P0183:06: {2.0}{X55,X60}]	
5	1.0000	PC	W67-40103-25477	G67-40103-25477	PLUG;AC SOCK;AMP TAB CONNECTOS;COLOR:BLK;POLES:03;SPEC.NO:25477		
6	2.0000	PC	W71-15510-22000	G71-15510-22000	PIN HEADER;POLES:10;STRAIGHT;PITCH:2.54 mm;1 ROW;STRAIGHT;STACKED 13MM5	[P0183:06: {2.0}{X57-X58}]	
7	1.0000	PC	W71-23102-03183	G71-23102-03183	WAFER;POLES:2;STRAIGHT;PITCH:2 mm;1 ROW;JS1125-02	[P0183:02: {1.0}{X19}]	
8	1.0000	PC	W71-23103-03184	G71-23103-03184	WAFER;POLES:3;STRAIGHT;PITCH:2 mm;1 ROW;JS1125-03	[P0183:02: {1.0}{X18}]	
9	1.0000	PC	W71-23111-04716	G71-23111-04716	WAFER;POLES:11;STRAIGHT;PITCH:2 mm;1 ROW;JS1125-11	[P0183:02: {1.0}{X21}]	
10	1.0000	PC	W71-23114-03193	G71-23114-03193	WAFER;POLES:14;STRAIGHT;PITCH:2 mm;1 ROW;JS1125-14	[P0183:01: {1.0}{X4}]	
11	1.0000	PC	W71-24102-20590	G71-24102-20590	WAFER;POLES:2;STRAIGHT;PITCH:2.5 mm;1 ROW;JS1001-02	[P0183:03: {1.0}{X44}]	
12	30.0000	PC	W71-43000-05662	G71-43000-05662	HOUSING;TERMINAL;SPH-002T-P0.5L		
13	1.0000	PC	W71-43102-05622	G71-43102-05622	PLUG;HOUSING;POLES:2;1 ROW;STRAIGHT;PITCH:2mm		
14	1.0000	PC	W71-43103-05623	G71-43103-05623	PLUG;HOUSING;POLES:3;1 ROW;STRAIGHT;PITCH:2mm		
15	1.0000	PC	W71-43111-05633	G71-43111-05633	PLUG;HOUSING;P:2mm0;POLES:11;1 ROW;STRAIGHT;PITCH:2mm0		
16	1.0000	PC	W71-43114-05635	G71-43114-05635	PLUG;HOUSING;P:2mm0;POLES:14;1 ROW;STRAIGHT;PITCH:2mm0		
17	30.0000	PC	W71-80000-05663	G71-80000-05663	BD.-IN-CONN;TERMINAL;SAN-002T-0.8A		
18	1.0000	PC	W71-83102-05642	G71-83102-05642	BOARD-IN-CONNECTOR;POLES:2;ROWS:1;STRAIGHT;PITCH:2 mm		
19	1.0000	PC	W71-83103-05643	G71-83103-05643	BOARD-IN-CONNECTOR;POLES:3;ROWS:1;STRAIGHT;PITCH:2 mm		
20	1.0000	PC	W71-83111-05656	G71-83111-05656	BOARD-IN-CONNECTOR;POLES:11;ROWS:1;STRAIGHT;PITCH:2 mm		
21	1.0000	PC	W71-83114-05658	G71-83114-05658	BOARD-IN-CONNECTOR;POLES:14;ROWS:1;STRAIGHT;PITCH:2 mm		
22	1.0000	PC	W67-40103-25477	G67-40103-25477	PLUG;AC SOCK;AMP TAB CONNECTOS;COLOR:BLK;POLES:03;SPEC.NO:25477		(UL)

Power Supply

	Quantity	Unit	S.Sku	M.Sku	Description	Reference Designators	Notes
1	0.0000	PC	Z68-00000-05301	J68-00000-05301	TRAFO;TOROID;POA37;JP 100;JP;TRANSFORMER ,TOROID,JP,HOUSING:250		
2	1.0000	PC	Z68-91837-00745	J68-91837-00745	TRAFO;TOR;EP2500;TR05-0015(R1L);JP 100V;NANHAI NRE		
3	0.0000	PC	Z68-00000-05302	J68-00000-05302	TRAFO;TOROID;POA37;UL 120;UL;TRANSFORMER ,TOROID,UL,HOUSING:250		(UL)
4	1.0000	PC	Z68-91835-00139	J68-91835-00139	TRAFO;TOROIDIAL;EP2500;UL 120V;(NRE TR05-0011)		(UL)
5	1.0000	PC	Z68-41834-30669	J68-91834-00138	TRAFO;TOROIDIAL;EP2500;EU 230V;(NRE TR05-0005)		(EU, UK, SAA, CCC, AR, BR1)
6	0.0000	PC	Z68-41834-30669	J68-00000-05300	TRAFO;TOROID;POA37;EU 230 OR 240;EU;TRANSFORMER ,TOROID,EU,HOUSING:250		(EU, UK, SAA, CCC, AR, BR1)
7	0.0000	PC	Z68-41833-30671	J68-41833-30671	TRAFO;TOR;EP2500;TI-023095E;UL 120V;TOROID;SPEC.NO:30671		(UL)

Resistor

	Quantity	Unit	S.Sku	M.Sku	Description	Reference Designators	Notes
1	5.0000	PC			RESISTOR;CARBON;47ohm;5%;0W1;SMD805	[P0183:01: {2.0}(R119,R126)]	*NOT available in DP
2	2.0000	PC			RESISTOR;CARBON;75ohm;5%;0W1;SMD805	[P0183:01: {1.0}(R143)]	*NOT available in DP
3	8.0000	PC			RESISTOR;CARBON;100ohm;5%;0W1;SMD805	[P0183:01: {7.0}(R128-R129,R149,R155,R164-R165,R173)]	*NOT available in DP
4	4.0000	PC			RESISTOR;CARBON;270ohm;5%;0W1;SMD805	[P0183:01: {4.0}(R160-R161,R167,R175)]	*NOT available in DP
5	2.0000	PC			RESISTOR;CARBON;390ohm;5%;0W1;SMD805	[P0183:01: {2.0}(R137,R172)]	*NOT available in DP
6	4.0000	PC			RESISTOR;CARBON;820ohm;5%;0W1;SMD805	[P0183:01: {4.0}(R138-R140,R154)]	*NOT available in DP
7	3.0000	PC			RESISTOR;CARBON;1Kohm;5%;0W1;SMD805	[P0183:01: {3.0}(R135,R151,R177)]	*NOT available in DP
8	2.0000	PC			RESISTOR;CARBON;1Kohm5;5%;0W1;SMD805	[P0183:01: {1.0}(R130)]	*NOT available in DP
9	5.0000	PC			RESISTOR;CARBON;2Kohm;5%;0W1;SMD805	[P0183:01: {2.0}(R124,R147)]	*NOT available in DP
10	2.0000	PC			RESISTOR;CARBON;2Kohm2;5%;0W1;SMD805	[P0183:01: {1.0}(R144)]	*NOT available in DP
11	10.0000	PC			RESISTOR;CARBON;4Kohm7;5%;0W1;SMD805	[P0183:01: {6.0}(R122-R123,R132,R145,R150,R171)]	*NOT available in DP
12	2.0000	PC			RESISTOR;CARBON;7Kohm5;5%;0W1;SMD805	[P0183:01: {2.0}(R158,R163)]	*NOT available in DP
13	4.0000	PC			RESISTOR;CARBON;10Kohm;5%;0W1;SMD805	[P0183:01: {3.0}(R131,R153,R157)]	*NOT available in DP
14	2.0000	PC			RESISTOR;CARBON;12Kohm;5%;0W1;SMD805	[P0183:01: {1.0}(R125)]	*NOT available in DP
15	2.0000	PC			RESISTOR;CARBON;39Kohm;5%;0W1;SMD805	[P0183:01: {2.0}(R156,R159)]	*NOT available in DP
16	2.0000	PC			RESISTOR;CARBON;47Kohm;5%;0W1;SMD805	[P0183:01: {1.0}(R148)]	*NOT available in DP
17	4.0000	PC			RESISTOR;CARBON;470Kohm;5%;0W1;SMD805	[P0183:01: {2.0}(R121,R146)]	*NOT available in DP
18	3.0000	PC			RESISTOR;METAL;3Kohm01;1%;0W1;SMD805	[P0183:01: {2.0}(R120,R152)]	*NOT available in DP
19	2.0000	PC			RESISTOR;METAL;4Kohm75;1%;0W1;SMD805	[P0183:01: {2.0}(R170,R180)]	*NOT available in DP
20	4.0000	PC			RESISTOR;METAL;5Kohm9;1%;0W1;SMD805	[P0183:01: {2.0}(R127,R133)]	*NOT available in DP
21	8.0000	PC			RESISTOR;METAL;10Kohm;1%;0W1;SMD805	[P0183:01: {8.0}(R134,R136,R141-R142,R162,R166,R176,R178)]	*NOT available in DP
22	4.0000	PC			RESISTOR;METAL;24Kohm;1%;0W1;SMD805	[P0183:01: {4.0}(R168-R169,R174,R179)]	*NOT available in DP
23	1.0000	PC	Y04-00170-20741	I04-00170-20741	THERMISTOR;PTC POLYSWITCH;0.17 ohm;7.4 x 14.2 x 3mm	[P0183:03: {1.0}(R113)]	
24	1.0000	PC	Y04-01000-22093	I04-01000-22093	THERMISTOR;NTC;1ohm;30A;SG405-3A	[P0183:03: {1.0}(R112)]	
25	2.0000	PC	Y04-15000-20589	I04-15000-20589	THERMISTOR;NTC;50ohm	[P0183:01: {1.0}(R11)]	
26	2.0000	PC	Y04-21001-03526	I04-21001-03526	THERMISTOR;PTC;100ohm;20%;DIA;W/LU;G(THINKING;PTMS2101Y P430YBB)	[P0183:01: {1.0}(R20)]	
27	2.0000	PC			RESISTOR;TRIMMER;100ohm;5mm x 5mm;HORIZONTAL;T100E5 x 5	[P0183:01: {1.0}(VR3)]	*NOT available in DP
28	4.0000	PC			RESISTOR;TRIMMER;2Kohm;5mm x 5mm;HORIZONTAL;T002K-5 x 5	[P0183:01: {2.0}(VR1-VR2)]	*NOT available in DP
29	2.0000	PC			RESISTOR;CARBON;10ohm;5%;0W25;LEAD WIRE;HORIZONTAL 26-6mm	[P0183:1: {1.0}(R24)]	*NOT available in DP
30	2.0000	PC			RESISTOR;CARBON;100ohm;5%;0W25;LEAD WIRE;HORIZONTAL 26-6mm	[P0183:1: {1.0}(R27)]	*NOT available in DP
31	4.0000	PC			RESISTOR;CARBON;820ohm;5%;0W25;LEAD WIRE;HORIZONTAL 26-6mm	[P0183:1: {2.0}(R23,R29)]	*NOT available in DP
32	1.0000	PC			RESISTOR;CARBON;1Kohm2;5%;0W25;LEAD WIRE;HORIZONTAL 26-6mm	[P0183:2: {1.0}(R203)]	*NOT available in DP
33	1.0000	PC			RESISTOR;CARBON;2Kohm;5%;0W25;LEAD WIRE;HORIZONTAL 26-6mm	[P0183:3: {1.0}(R118)]	*NOT available in DP
34	1.0000	PC			RESISTOR;CARBON;6Kohm8;5%;0W25;LEAD WIRE;HORIZONTAL 26-6mm	[P0183:3: {1.0}(R116)]	*NOT available in DP
35	4.0000	PC			RESISTOR;CARBON;10Kohm;5%;0W25;LEAD WIRE;HORIZONTAL 26-6mm	[P0183:02: {4.0}(R204-R207)]	*NOT available in DP
36	2.0000	PC			RESISTOR;CARBON;47Kohm;5%;0W25;LEAD WIRE;HORIZONTAL 26-6mm	[P0183:1: {1.0}(R30)]	*NOT available in DP
37	4.0000	PC			RESISTOR;CARBON;68Kohm;5%;0W25;LEAD WIRE;HORIZONTAL 26-6mm	[P0183:1: {4.0}(R37-R40)]	*NOT available in DP

	Quantity	Unit	S.Sku	M.Sku	Description	Reference Designators	Notes
38	11.0000	PC			RESISTOR;CARBON;150Kohm;5%;0W25;LEAD WIRE;HORIZONTAL 26-6mm	[P0183:1: {6.0}(R9,R19,R21-R22,R41-R42)]	*NOT available in DP
39	2.0000	PC			RESISTOR;CARBON;220Kohm;5%;0W25;LEAD WIRE;HORIZONTAL 26-6mm	[P0183:2: {2.0}(R71,R76)]	*NOT available in DP
40	1.0000	PC			RESISTOR;CARBON;330Kohm;5%;0W25;LEAD WIRE;HORIZONTAL 26-6mm	[P0183:2: {1.0}(R72)]	*NOT available in DP
41	2.0000	PC			RESISTOR;CARBON;470Kohm;5%;0W25;LEAD WIRE;HORIZONTAL 26-6mm	[P0183:2: {1.0}(R75)]	*NOT available in DP
42	2.0000	PC			RESISTOR;CARBON;820Kohm;5%;0W25;LEAD WIRE;HORIZONTAL 26-6mm	[P0183:1: {2.0}(R33,R43)]	*NOT available in DP
43	2.0000	PC			RESISTOR;CARBON;1Mohm;5%;0W25;LEAD WIRE;HORIZONTAL 26-6mm	[P0183:2: {2.0}(R73-R74)]	*NOT available in DP
44	1.0000	PC			RESISTOR;METAL;6Kohm8;1%;0W25;LEAD WIRE;HORIZONTAL 26-6mm	[P0183:3: {1.0}(R117)]	*NOT available in DP
45	3.0000	PC			RESISTOR;METAL;464Kohm;1%;0W25;LEAD WIRE;HORIZONTAL 26-6mm	[P0183:01: {1.0}(R53)]	*NOT available in DP
46	3.0000	PC			RESISTOR;METAL;23Kohm2;1%;0W5;LEAD WIRE	[P0183:1: {3.0}(R44-R46)]	*NOT available in DP
47	4.0000	PC			RESISTOR;METAL;12Kohm;1%;1W;LEAD WIRE;TAPE AND REEL PACKAGE;	[P0183:01: {2.0}(R7,R28)]	*NOT available in DP
48	2.0000	PC			RESISTOR;METAL;15Kohm;1%;1W;LEAD WIRE;TAPE AND REEL PACKAGE;	[P0183:01: {1.0}(R25)]	*NOT available in DP
49	5.0000	PC			RESISTOR;METAL;3ohm3;5%;1W;LEAD WIRE;TAPE AND REEL PACKAGE;	[P0183:01: {3.0}(R2,R4,R36)]	*NOT available in DP
50	4.0000	PC			RESISTOR;METAL;22ohm;1%;1W;LEAD WIRE;FLAME PROOF;TAPE AND REEL PACKAGE;	[P0183:01: {2.0}(R5-R6)]	*NOT available in DP
51	4.0000	PC			RESISTOR;METAL;1ohm5;1%;2W;LEAD WIRE;AXIAL	[P0183:01: {2.0}(R3,R8)]	*NOT available in DP
52	2.0000	PC			RESISTOR;METAL;5ohm6;5%;2W;LEAD WIRE;AXIAL	[P0183:01: {1.0}(R26)]	*NOT available in DP
53	1.0000	PC			RESISTOR;CEMENT;120ohm;5%;2W;LEAD WIRE;RADIAL;PITCH:5mm;PRECUT:3mm1+/-0mm5	[P0183:03: {1.0}(R114)]	*NOT available in DP
54	2.0000	PC			RESISTOR;CEMENT;33Kohm;5%;2W;LEAD WIRE;RADIAL;PITCH:5mm;PRECUT:3mm1+/-0mm5	[P0183:02: {2.0}(R82-R83)]	*NOT available in DP
55	16.0000	PC			RESISTOR;CEMENT;0ohm22;5%;3W;LEAD WIRE;RADIAL;PITCH:5mm;PRECUT:3mm1+/-0mm5	[P0183:01: {8.0}(R10-R15,R17-R18)]	*NOT available in DP
56	10.0000	PC			RESISTOR;CEMENT;12ohm;5%;5W;LEAD WIRE;RADIAL;PITCH:5mm;PRECUT:3mm1+/-0mm5	[P0183:01: {4.0}(R48,R54,R56-R57)]	*NOT available in DP
57	4.0000	PC			RESISTOR;CEMENT;5Kohm1;5%;5W;LEAD WIRE;RADIAL;PITCH:5mm;PRECUT:3mm1+/-0mm5	[P0183:01: {2.0}(R16,R35)]	*NOT available in DP
58	8.0000	PC			RESISTOR;CEMENT;8Kohm2;5%;5W;LEAD WIRE;RADIAL;PITCH:5mm;PRECUT:3mm1+/-0mm5	[P0183:01: {4.0}(R34,R47,R49,R55)]	*NOT available in DP
59	6.0000	PC			RESISTOR;METAL OXIDE;2Kohm2;5%;5W;LEAD WIRE;AXIAL;TAPING	[P0183:01: {3.0}(R50-R52)]	*NOT available in DP

Potentiometer

	Quantity	Unit	S.Sku	M.Sku	Description	Reference Designators	Notes
1	2.0000	PC	Y03-00001-15235	I03-00001-15235	POTENTIOMETER;10Kohm;TAPER:B;MONO;SHAFT:30MM;DETENTS:2 1;NORMAL TORQUE;SOUNDWELL RA0901NOX0K-HA1-526)	[P0183:04: {2.0}(VR7-VR8)]	

Switch

	Quantity	Unit	S.Sku	M.Sku	Description	Reference Designators	Notes
1	1.0000	PC	Y70-41021-20747	I70-41021-20747	SWITCH;DIP;10P2T;PCB VERSION	[P0183:07: {1.0}(SW1)]	
2	1.0000	PC	Y84-02211-28841	I84-02211-28841	SWITCH;ROCKER;1P1T;LOCKING;NONSHORT;AMP TABS;CUTOUT:11mm x 30mm;ITEM:3		

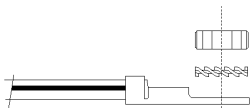
Transistor

	Quantity	Unit	S.Sku	M.Sku	Description	Reference Designators	Notes
1	4.0000	PC			TRANSISTOR;MOSFET;TO220;3;STP75NF75	[P0183:01: {2.0}(T10,T12)]	*NOT available in DP
2	8.0000	PC			TRANSISTOR;2SA1943;FAIRCHILD(TO264) OR TOSHIBA(2-21F1A) ONLY!	[P0183:01: {4.0}(T1-T4)]	*NOT available in DP
3	8.0000	PC			TRANSISTOR;2SC5200;FAIRCHILD(TO264) OR TOSHIBA(2-21F1A) ONLY!	[P0183:01: {4.0}(T5-T8)]	*NOT available in DP
4	2.0000	PC			TRANSISTOR;MJE15032;TO220	[P0183:01: {1.0}(T9)]	*NOT available in DP
5	2.0000	PC			TRANSISTOR;MJE15033;TO220	[P0183:01: {1.0}(T11)]	*NOT available in DP
6	2.0000	PC			TRANSISTOR;BC846B;SOT;SMD	[P0183:02: {2.0}(T47,T50)]	*NOT available in DP
7	1.0000	PC			TRANSISTOR;BC856B;SOT;SMD	[P0183:02: {1.0}(T48)]	*NOT available in DP
8	1.0000	PC			TRANSISTOR;MPSA06;TO92;P:2.54(BENT LEAD)	[P0183:02: {1.0}(T49)]	*NOT available in DP
9	1.0000	PC			TRANSISTOR;MPSA56;TO92;TAPING,PITCH:2.54	[P0183:02: {1.0}(T51)]	*NOT available in DP
10	10.0000	PC			TRANSISTOR;MBTA06;SOT-23	[P0183:01: {4.0}(T28,T30-T31,T33)]	*NOT available in DP
11	1.0000	PC			TRANSISTOR;MBTA42;SMD;SOT-23;ON Semiconductor Only, for Noise Generator	[P0183:02: {1.0}(T38)]	*NOT available in DP
12	8.0000	PC			TRANSISTOR;MBTA56;SOT-23	[P0183:01: {4.0}(T29,T32,T34-T35)]	*NOT available in DP
13	1.0000	PC			TRANSISTOR;TIP31C;TO220	[P0183:03: {1.0}(T27)]	*NOT available in DP



option: only for projects with PE-cable to PCB !

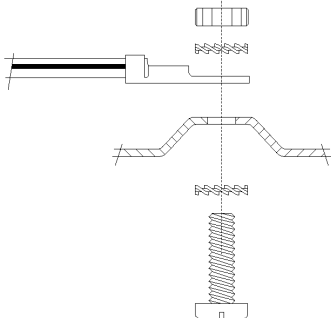
ASSEMBLED CABLE
(Yellow/Green) to PCB



HEX NUT SC-NUHEXM04
WASHER TEETH EXTERNAL SC-WATEEXT4×7×1.7
ASSEMBLED CABLE WITH LUG 4.3mm WI-00/07/xxxx/07/05/00/18/34/00



ASSEMBLED CABLE
(Yellow/Green) to Power Conn.



HEX NUT SC-NUHEXM04
WASHER TEETH EXTERNAL SC-WATEEXT4×7×1.7
ASSEMBLED CABLE WITH LUG 4.3mm WI-00/07/xxxx/07/05/00/18/34/00




METAL CASE

WASHER TEETH EXTERNAL SC-WATEEXT4×7×1.7

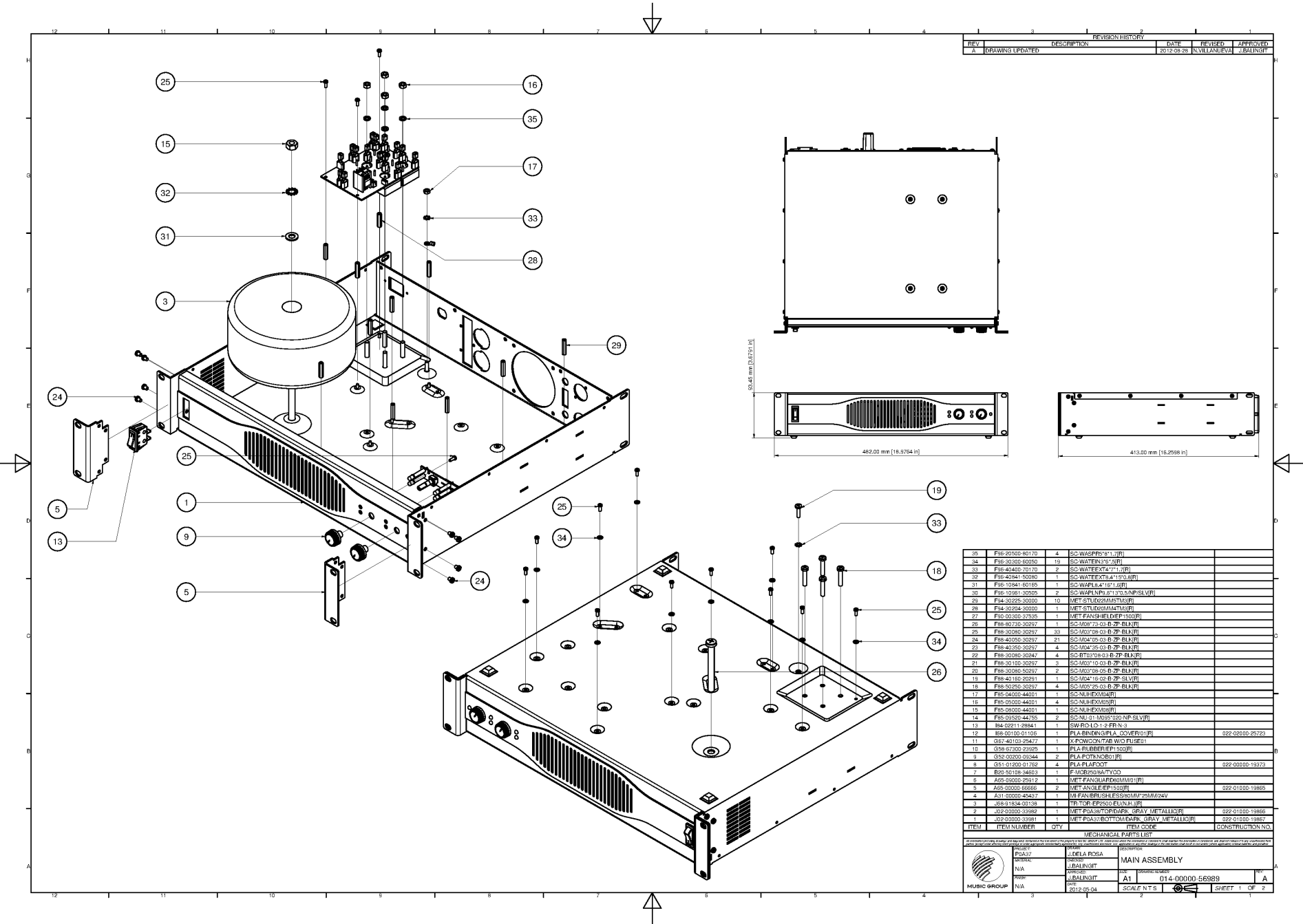


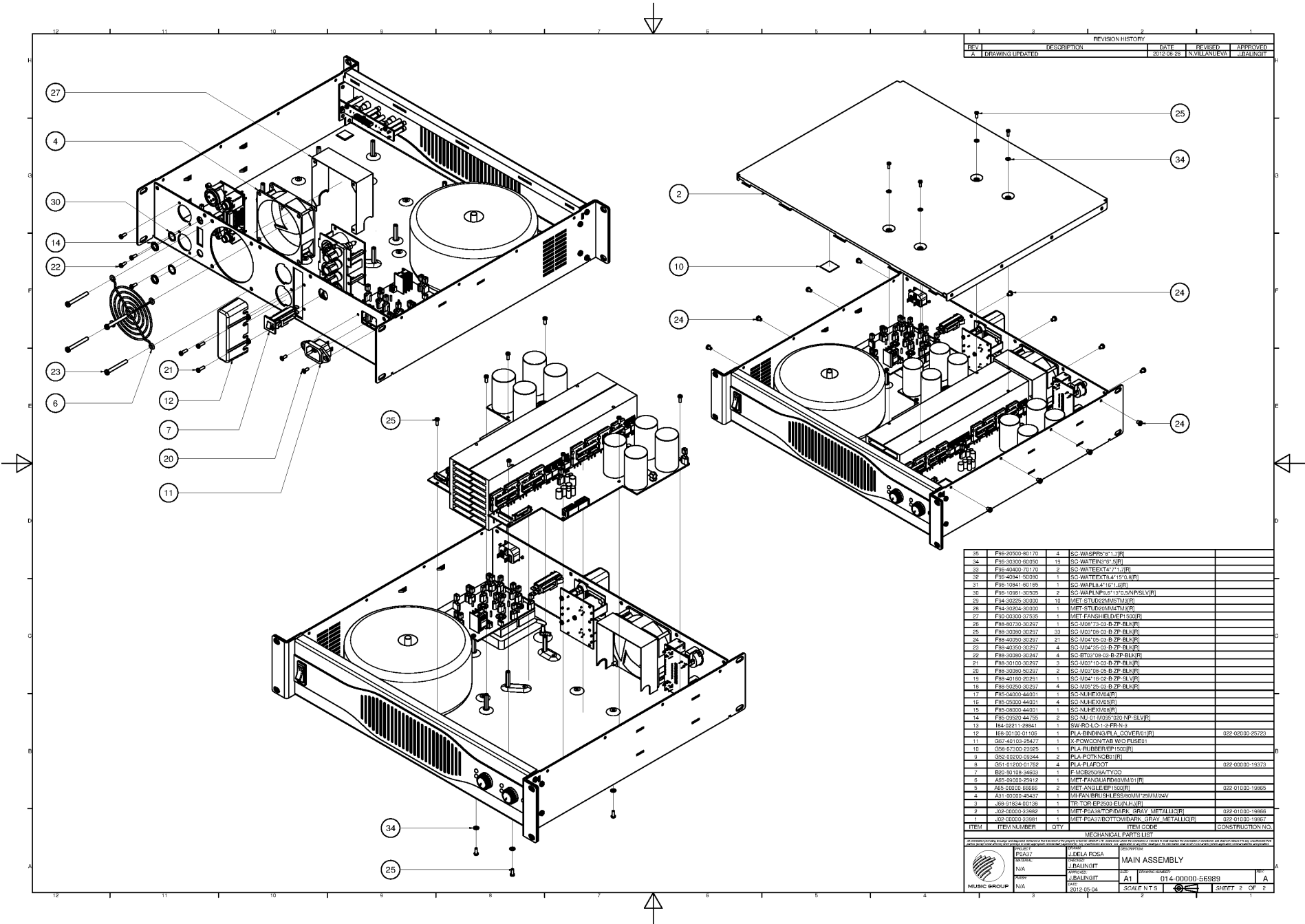
SCREW SC-M04×16-02-B-ZP-SLV
(standard length, can be variable if required)

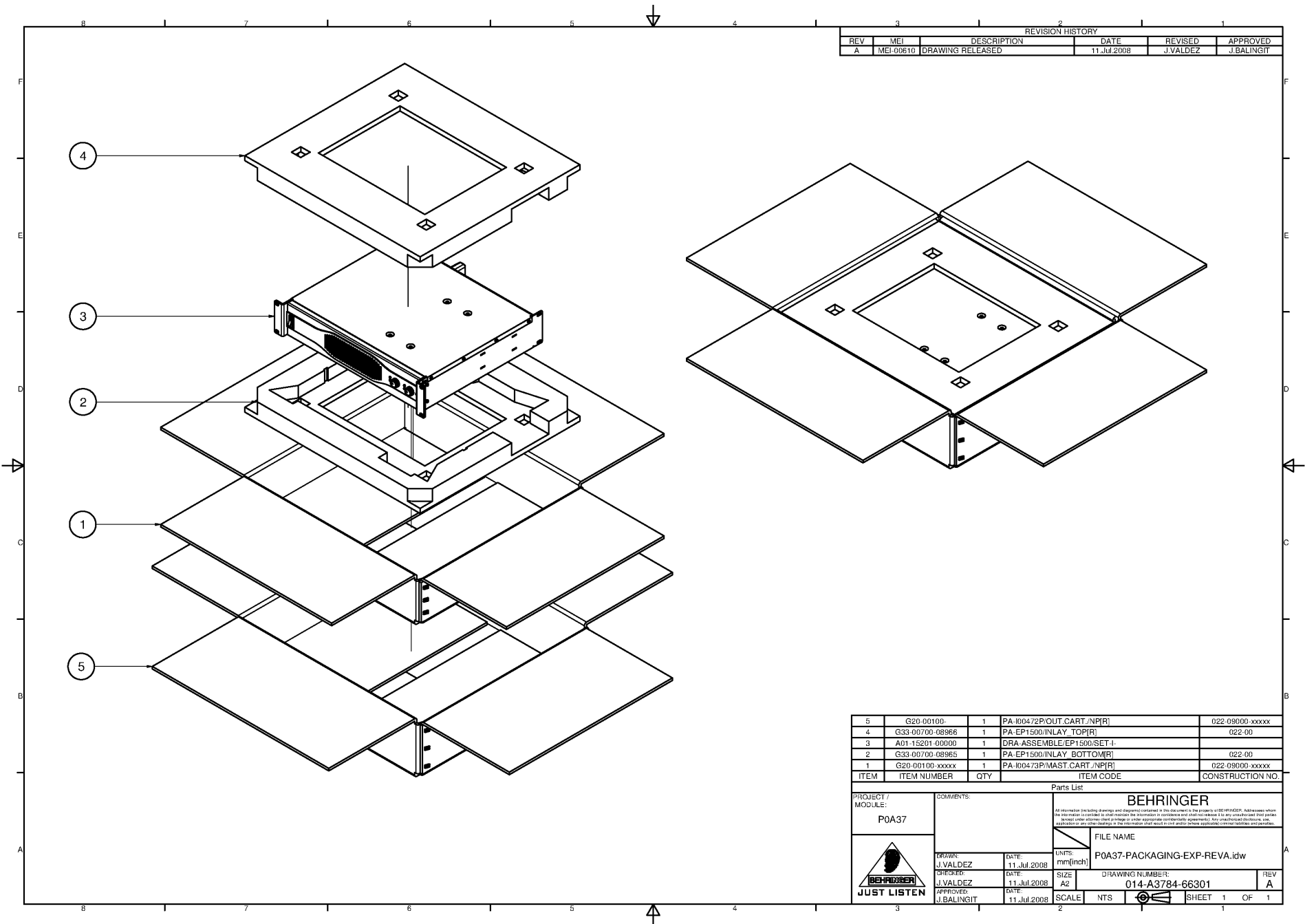


Part				Name		Date		Project		
ASSEMBLE DRAWING				Drawn		PEUSE		08.01.1996		
				File		R14-ASSEMBLE-PE-SCREW-REVD.DWG				
Drawing-No.: X				Part-No.:						
				Color of Part						
				Printing						
				Surface						
D		changed from M3 to M4	03.06.2003	SCHOMMER	Scale					
C		add optional block, delete P-IDs	11.03.2002	MERKEL	Material					
B		adjust Part-IDs	11.04.2001	MERKEL	Units					
A			08.01.1996	PEUSE	Behringer					
Rev.		Modification	Date	Name	Part-ID.:		DRA-ASSEMBLE/PE-SCREW			
							Page 1			
							of 1			



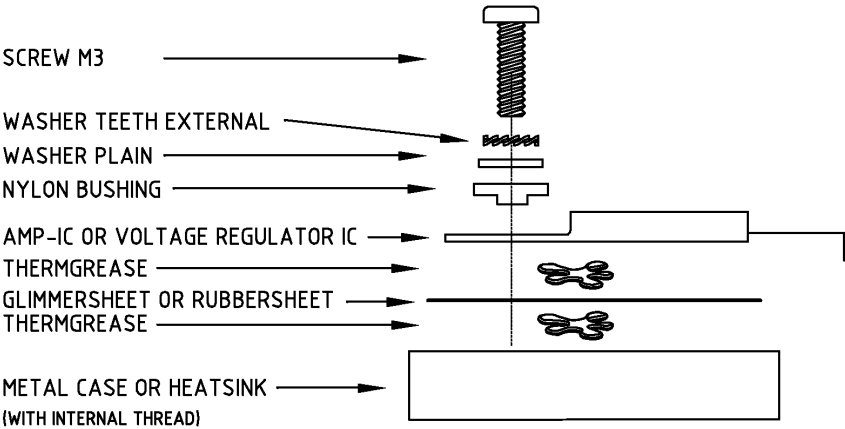




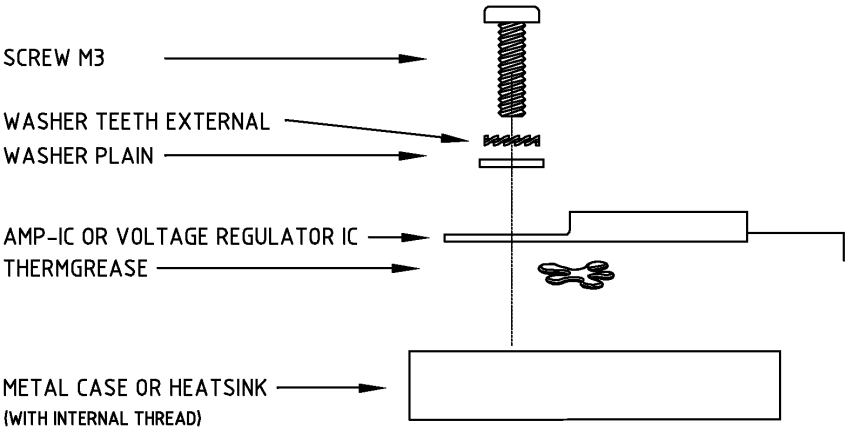


SCREW IN FRONT

POWER-IC WITH METAL REAR SIDE:



POWER-IC WITH PLASTIC HOUSING:
(FULL PACK)



VALID PART-IDS CAN VARY PER PROJECT AND MUST BE SEEN IN EVERY BOM INDIVIDUALLY !

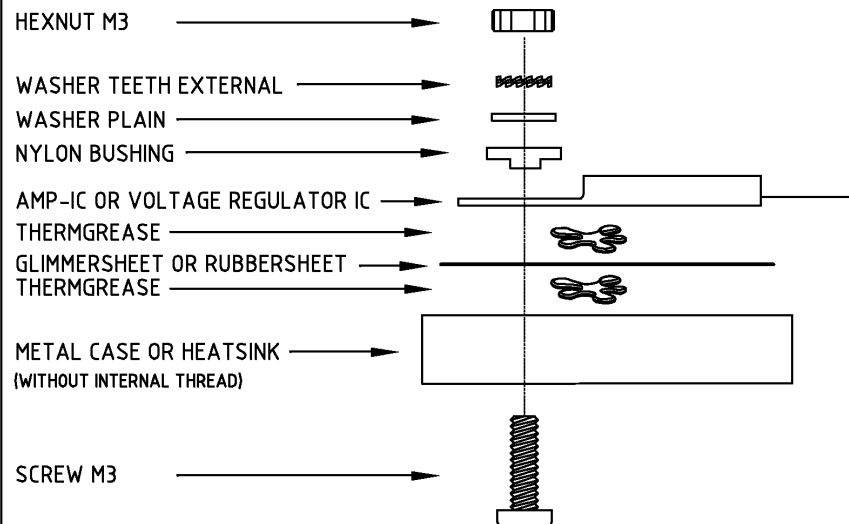
Part:				Name	Date	Project	
ASSEMBLE DRAWING				Drawn	St.Merkel	24.06.2002	
				File	ASSEMBLE-POWER-IC-REV8.DWG		
Drawing-No.: X				Part-No.:			
				Color of Part			
				Printing			
				Surface			
				Scale			
				Material			
B	ADD PAGE 2	16.10.2002	MERKEL	Units			
A		24.06.2002	MERKEL	Behringer			
Rev.	Modification	Date	Name	Part-I.D.:	DRA-ASSEMBLE/POWER-IC		
						Page	1
						of	2



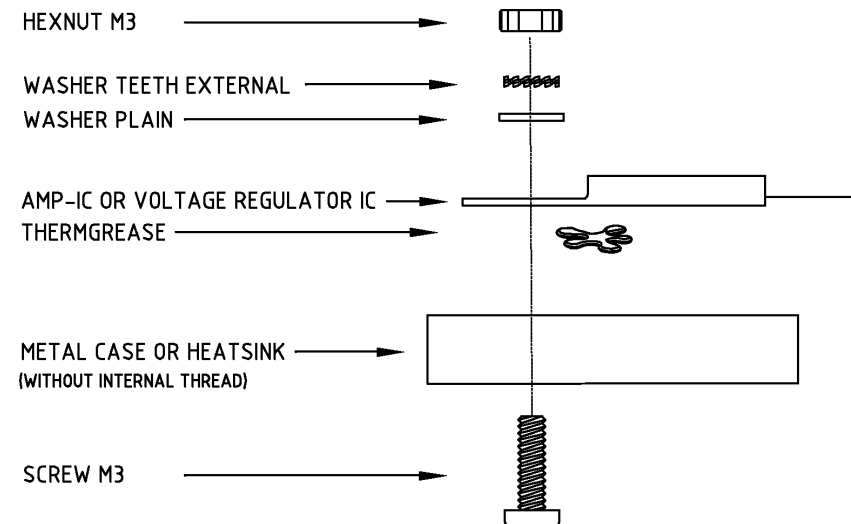


SCREW IN REAR

POWER-IC WITH METAL REAR SIDE:



VALID PART-IDS CAN VARY PER PROJECT AND MUST BE SEEN IN EVERY BOM INDIVIDUALLY !

POWER-IC WITH PLASTIC HOUSING:
(FULL PACK)

Part:				Name	Date	Project
ASSEMBLE DRAWING				Drawn	St.Merkel	24.06.2002
Drawing-No.: X				File	ASSEMBLE-POWER-IC-REV8.DWG	
				Part-No.:		
				Color of Part		
				Printing		
				Surface		
				Scale		
				Material		
B	ADD PAGE 2	16.10.2002	MERKEL	Units		
A		24.06.2002	MERKEL	Behringer		
Rev.	Modification	Date	Name	Part-I.D.:	DRA-ASSEMBLE/POWER-IC	



Page 2
of 2



We Hear You