

PPSL Gradient W218-8 90 litres (forzado fb=f3=24Hz)

Box Properties

--Description--

Name:

Type: Vented Box w/ Active HP Filter

Shape: Prism, square

--Box Parameters--

Vb = 90, liters

V(total) = 89,92 liters

Fb = 24,67 Hz

QL = 6,2

F3 = 24,1 Hz

Fill = minimal

--Vents--

No. of Vents = 2

Vent shape = rectangle

Vent ends = two flush

Hv = 70, mm

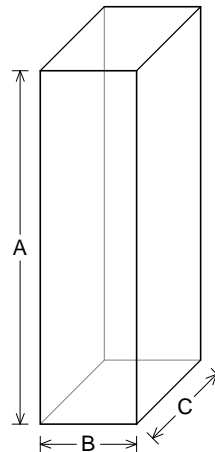
Wv = 70, mm

Lv = 450, mm

--Active 12 dB/oct. HP Filter--

Fx = 27, Hz

Qx = 2,



--External Dimensions--

A = 1100 mm

B = 300,5 mm

C = 376, mm

--Internal Dimensions--

A = 1056 mm

B = 256,5 mm

C = 332, mm

--Wall Thickness--

Front = 22, mm

Side = 22, mm

Driver Properties

--Description--

Name: Select W218-8

Type: Standard one-way driver

Company: Gradient

Magnetic shielding

--Configuration--

No. of Drivers = 2

Mounting = Standard, Push-pull

Wiring = Parallel

Drivers sum coherently = Yes

--Driver Parameters--

Fs = 38, Hz

Qms = 3,45

Vas = 36,2 liters [72,4]

Xmax = 9,5 mm

Sd = 211, sq.cm [400,9]

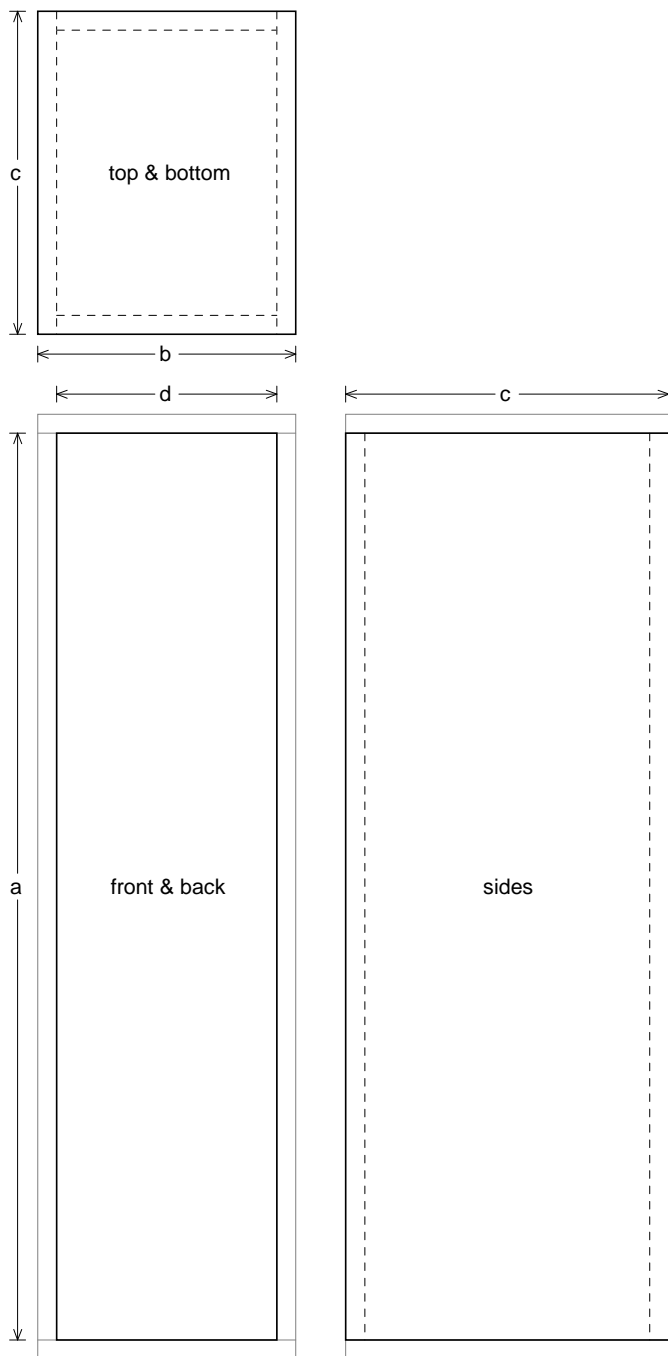
Qes = 0,56

Re = 6,2 ohms [3,1]

Le = 0,84 mH [0,42]

Z = 8, ohms [4,]

Pe = 80, watts [160,]



Box Parts

Box Shape: Square Prism

1 Top, 1 Bottom: depth (c) = 376, mm
width (b) = 300,5, thickness = 22, mm

1 Front, 1 Back: height (a) = 1056 mm
width (d) = 256,5, thickness = 22, mm

2 Sides: height (a) = 1056 mm
depth (c) = 376,, thickness = 22, mm

--Driver Mounting--

Mounting: Flush

Aim: Half face front, half face rear

Wiring Diagram

