

Box Properties

--Description--

Name:

Type: Closed Box

Shape: Prism, square (optimum)

--Box Parameters--

Vb = 1.547 cu.ft

V(total) = 1.607 cu.ft

Qtc = 0.5

QL = 20

F3 = 13.38 Hz

Fill = heavy

Driver Properties

--Description--

Name: 295-460

Type: Standard one-way driver

Company: Dayton Loudspeaker Co.

Piston: 10" Al cone

Suspension: Rubber

Frame: Cast

Voice Coil: 2.5"

--Configuration--

No. of Drivers = 1

--Mechanical Parameters--

Fs = 22.7 Hz

Qms = 3.02

Vas = 54.71 liters

Cms = 0.35 mm/N

Mms = 139.5 g

Rms = 6.633 kg/s

Xmax = 14 mm

P-Dia = 8.11 in

Sd = 331.8 sq.cm

P-Vd = 0.464 liters

--Electrical Parameters--

Qes = 0.47

Re = 3.3 ohms

Le = 3.598 mH

Z = 4 ohms

BL = 11.87 N/A

Pe = 350 watts

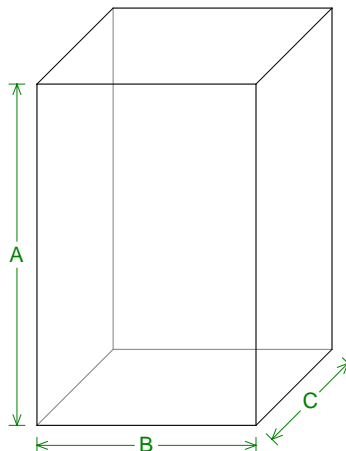
--Electromech. Parameters--

Qts = 0.4

no = 0.131 %

1-W SPL = 83.33 dB

2.83-V SPL = 87.17 dB



--External Dimensions--

A = 24.24 in

B = 15.55 in

C = 10.19 in

--Internal Dimensions--

A = 22.74 in

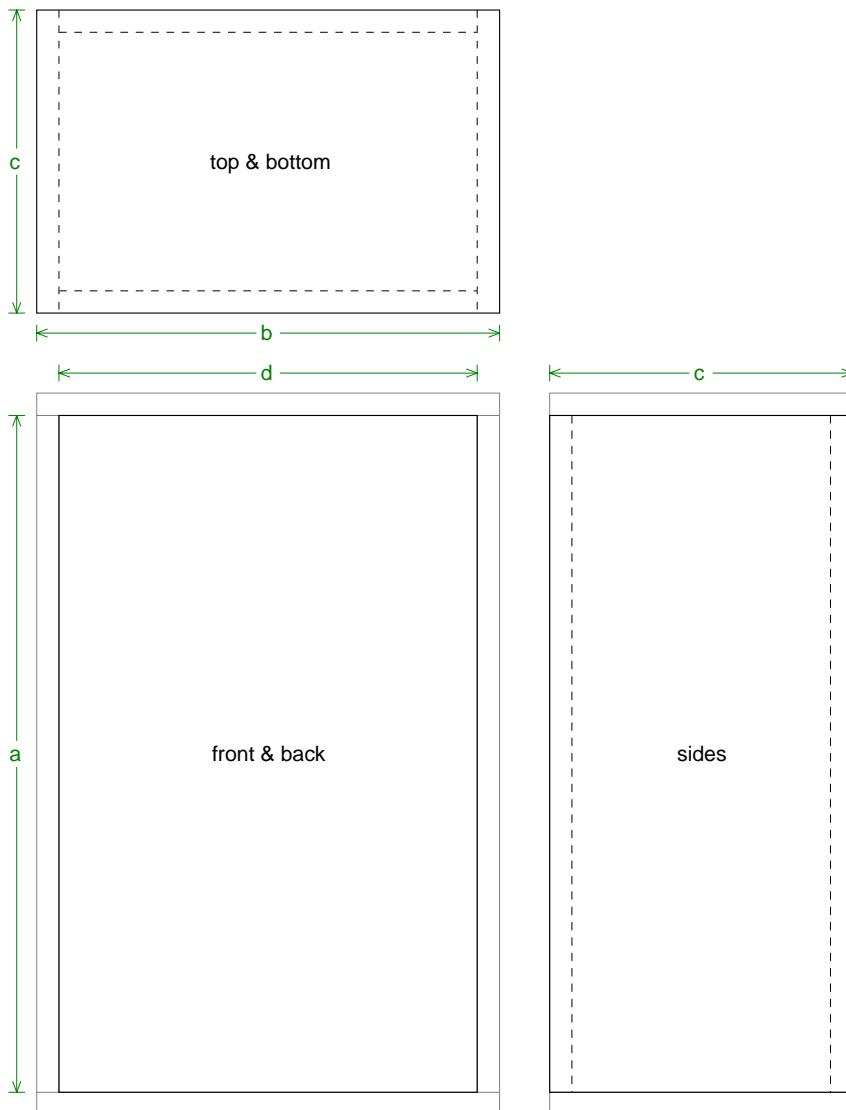
B = 14.05 in

C = 8.686 in

--Wall Thickness--

Front = 0.75 in

Side = 0.75 in



Box Parts

Box Shape: Optimum Square Prism

1 Top, 1 Bottom: depth (c) = 10.19 in
width (b) = 15.55, thickness = 0.75 in

1 Front, 1 Back: height (a) = 22.74 in
width (d) = 14.05, thickness = 0.75 in

2 Sides: height (a) = 22.74 in
depth (c) = 10.19, thickness = 0.75 in

--Driver Mounting--
Mounting: Flush



Wiring Diagram

