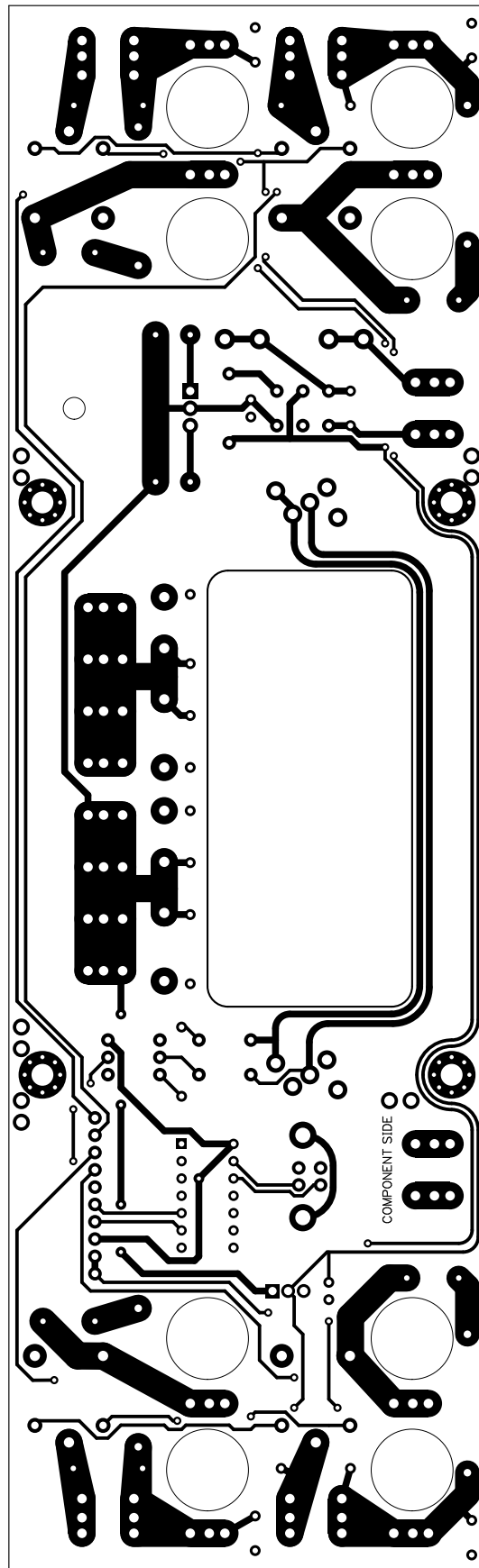
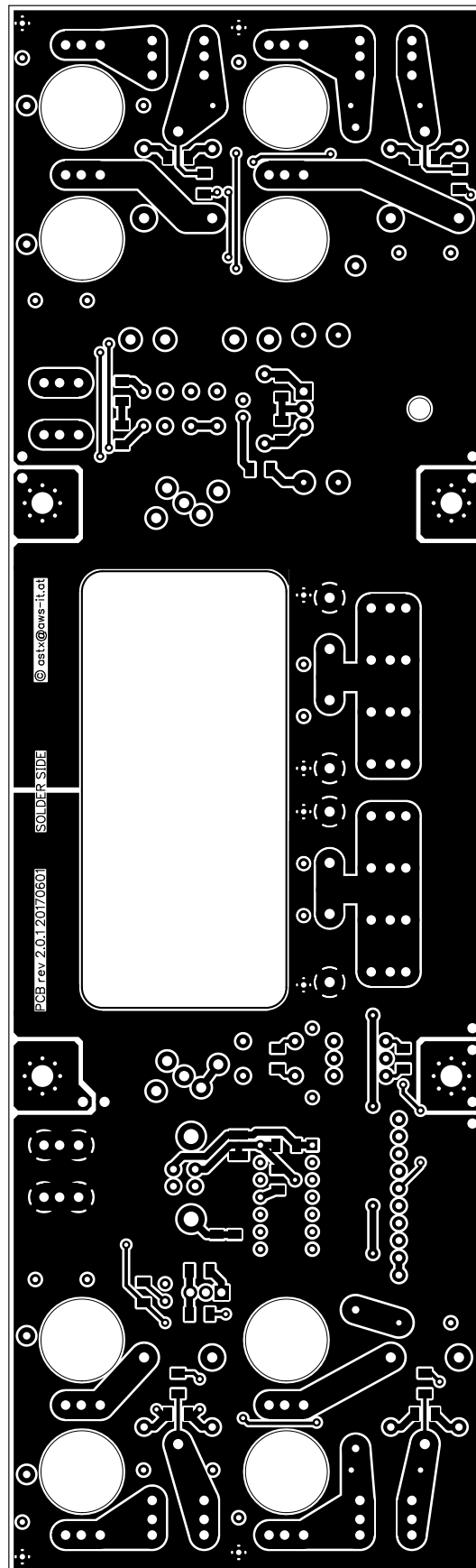


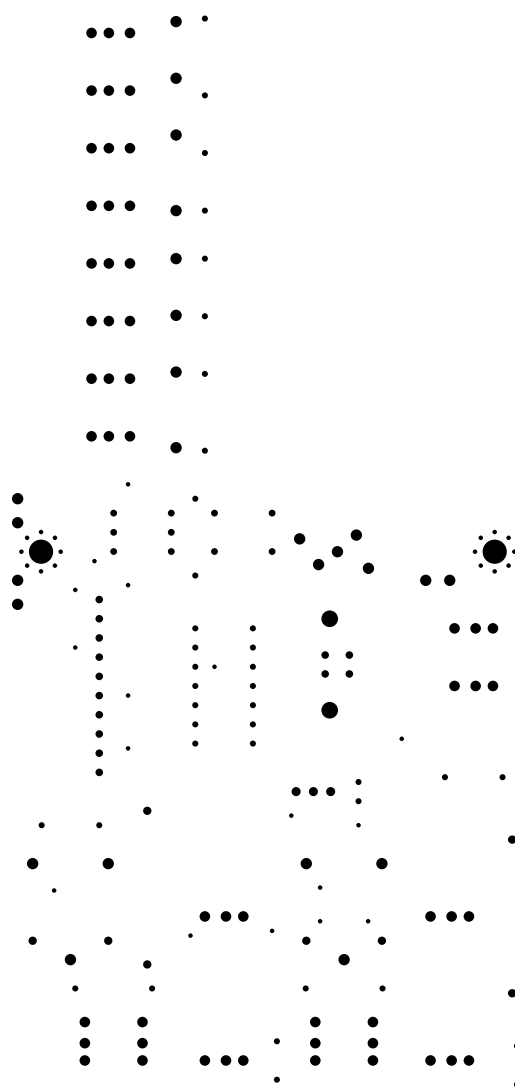
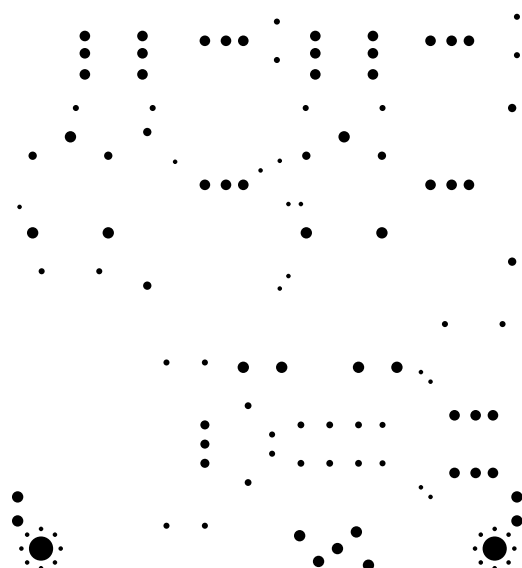
1. Table of Contents (This Page)
Created on Thu Jun 1 20:13:09 2017

- 2. component
- 3. solder
- 4. outline
- 5. plated-drill
- 6. unplated-drill
- 7. componentmask
- 8. soldermask
- 9. topsilk
- 10. bottomsilk
- 11. toppaste
- 12. bottompaste
- 13. topassembly
- 14. bottomassembly
- 15. fab

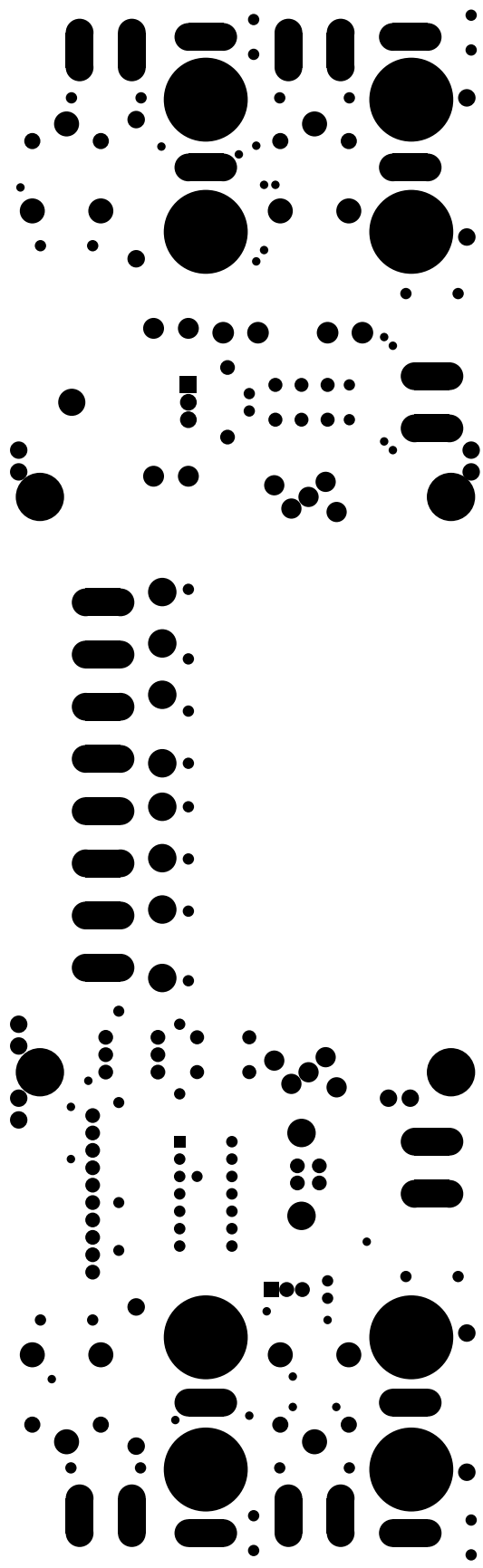


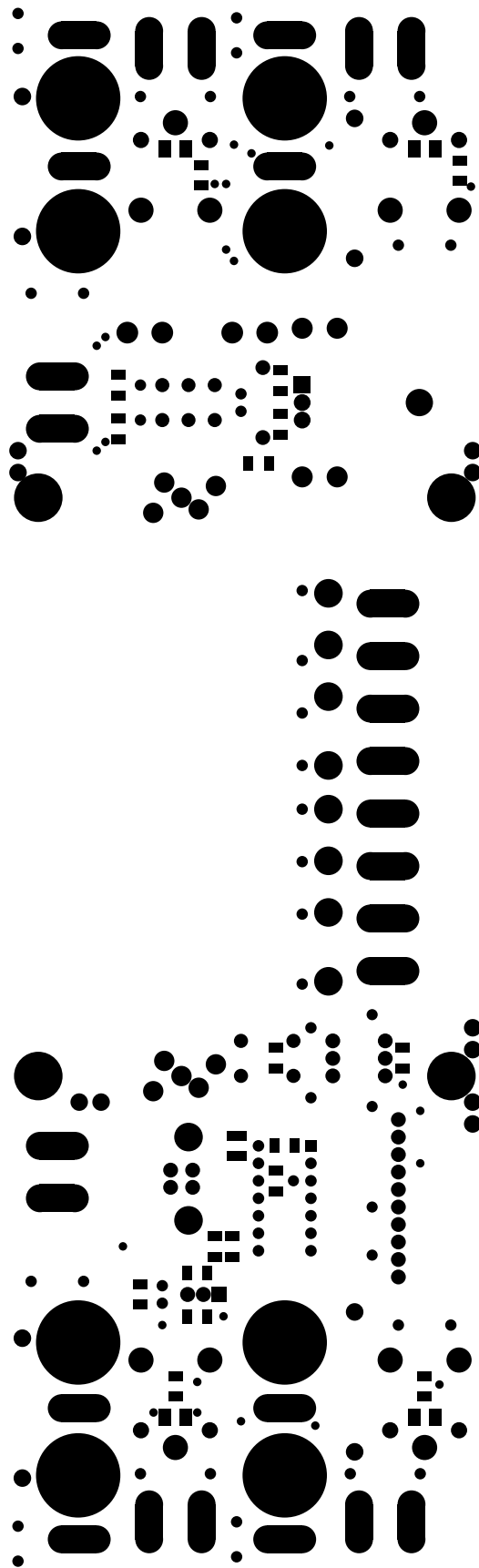


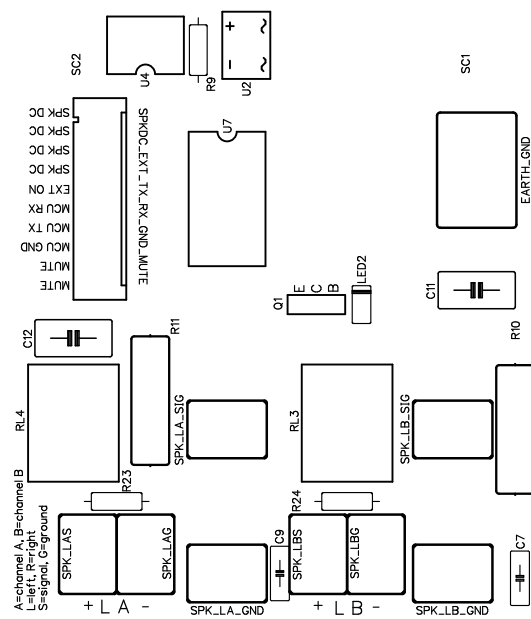
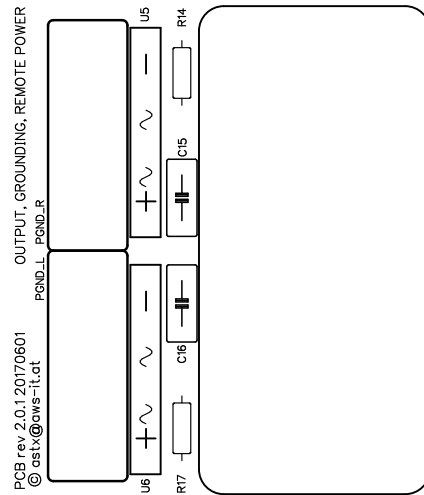
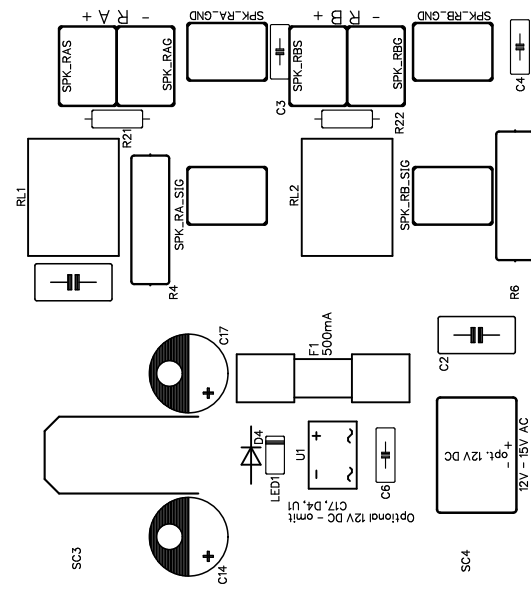
bottom (mirrored), scale = 1:1.000
backplane_4channel.pcb





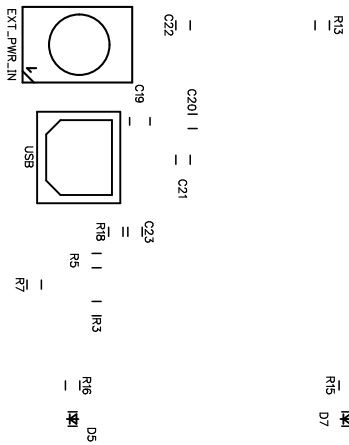
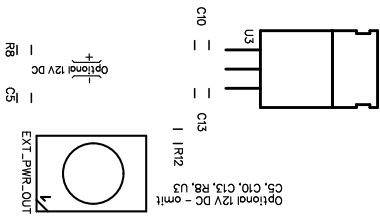




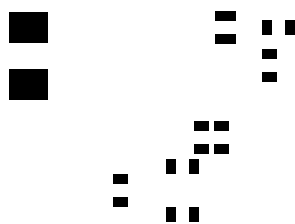
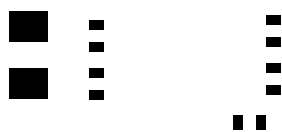
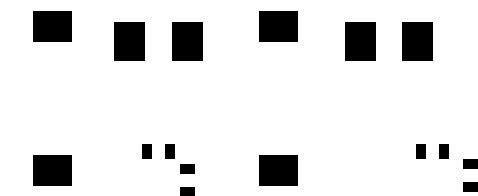


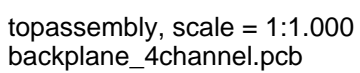
```
topsilk, scale = 1:1.000
backplane_4channel.pcb
```

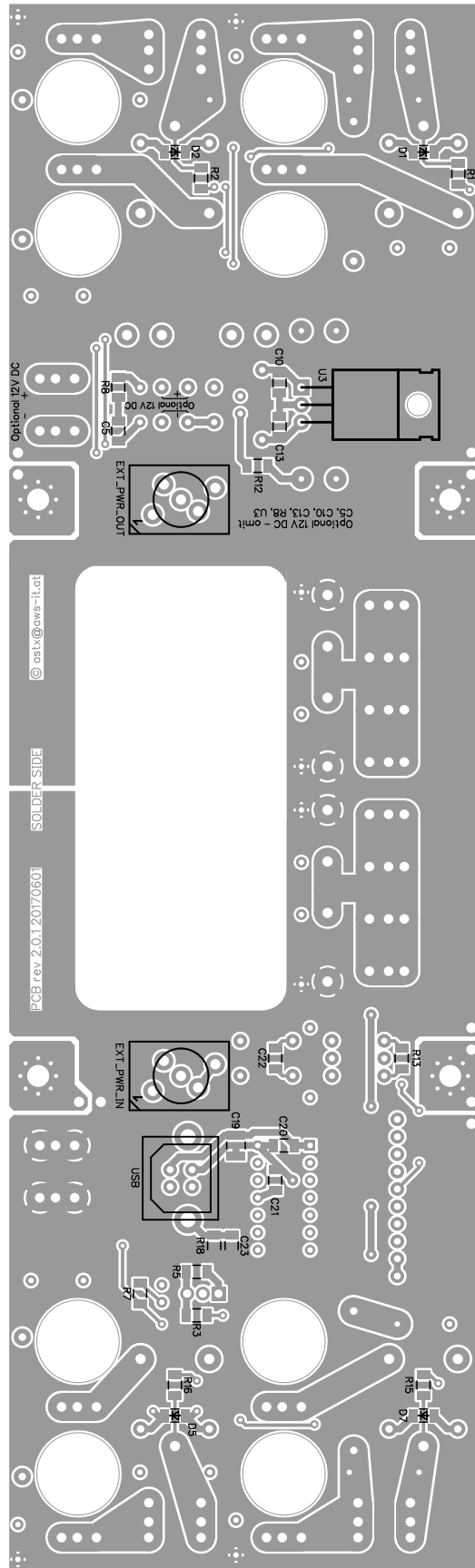
D1
D2
R2







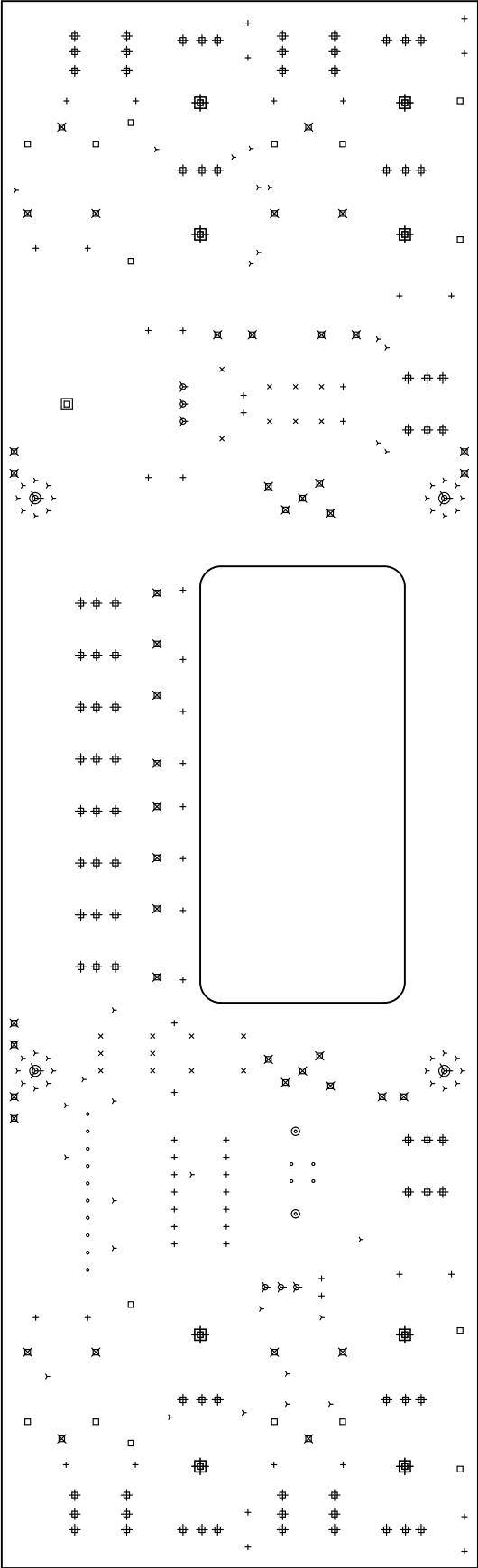




There are 11 different drill sizes used in this layout, 316 holes total

Symbol	Diam. (Inch)	Count	Plated?
Y	0.024	61	YES
+	0.031	58	YES
x	0.035	18	YES
°	0.039	14	YES
□	0.043	16	YES
▽	0.047	6	YES
#	0.055	84	YES
⌘	0.059	44	YES
⊙	0.087	2	YES
⊞	0.126	1	NO
⊗	0.126	4	YES
⊕	0.472	8	NO

Title: (unknown) – Fabrication Drawing
Author: astx@aws-it.at
Date: Thu Jun 1 18:13:09 2017 UTC



Board outline is the centerline of this path