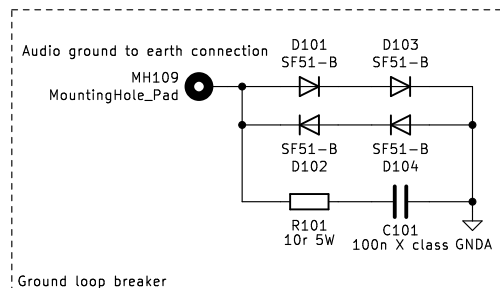
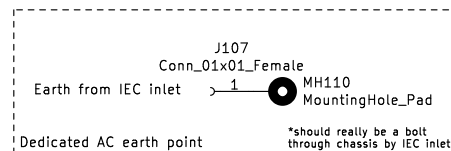
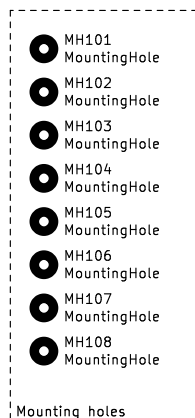
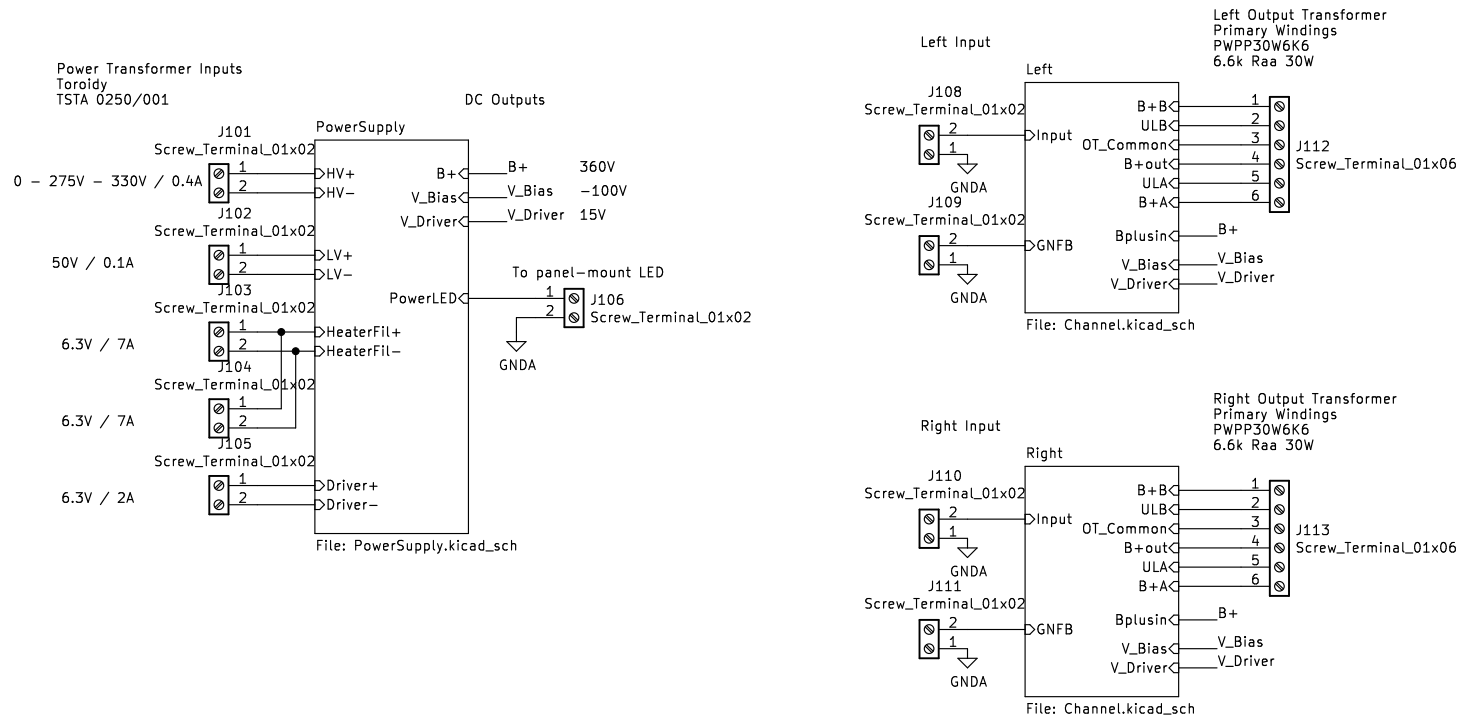


Notes / Questions

- Fix B+ connections wrt to the smoothing cap
- Add In net labels



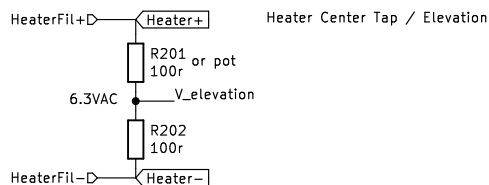
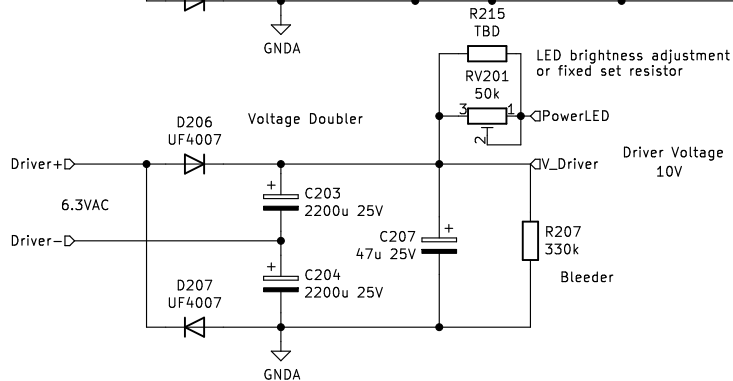
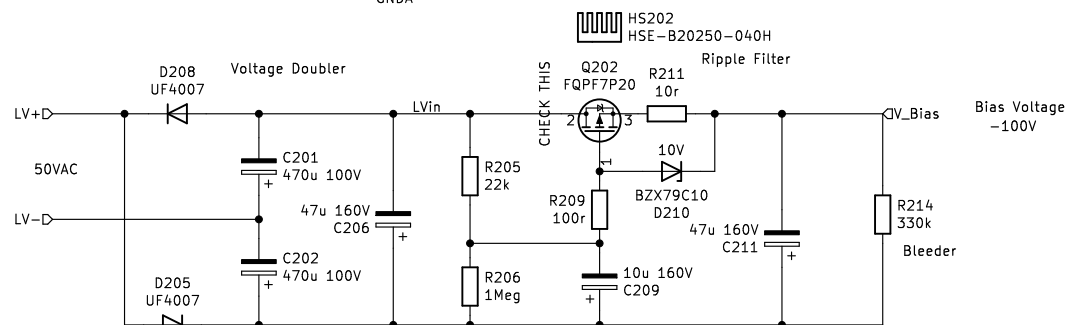
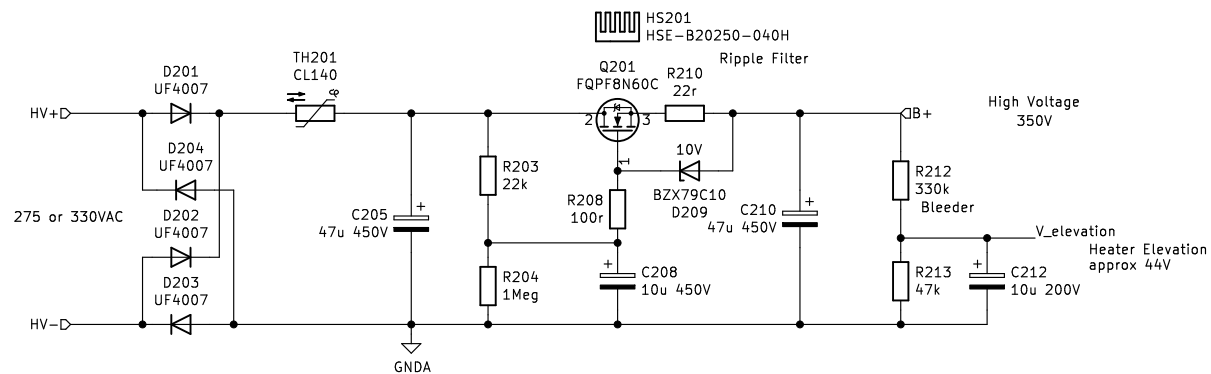
Sheet: /
File: BabyHuey.kicad_sch

Title: Baby Huey – "Engineer's Version"

Size: A4 Date: 2021-04-25

KiCad E.D.A. kicad (6.0.0-0)

Rev:
Id: 1/4



Notes

- * Both FETs are encapsulated in plastic
- no isolation pad / shoulders needed
- use heat transfer pad / paste

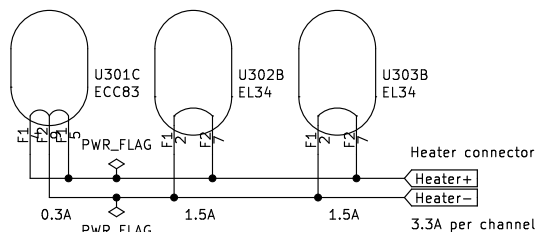
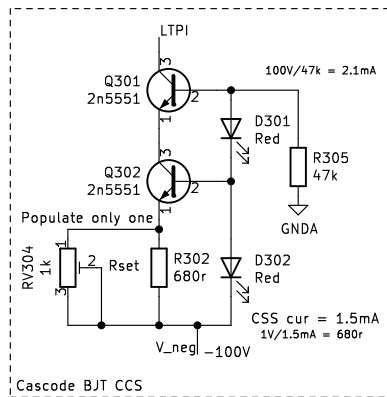
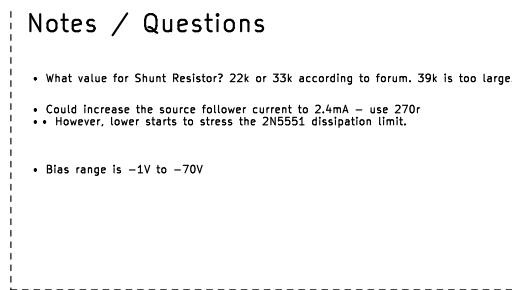
The regulator gives protection to inrush
Max V across the 22r resistor is $V_Z - V_{GS} = 10 - 4 = 6$
Max current is $6/22 = 270\text{mA}$

Sheet: /PowerSupply/
File: PowerSupply.kicad_sch

Title: Baby Huey – "Engineer's Version" – Power Supply

Size: A4 Date:
KiCad E.D.A. kicad (6.0.0-0)

Rev:
Id: 2/4



Sheet: /Left/		
File: Channel.kicad_sch		
Title: Baby Huey – "Engineer's Version" – Channel		
Size: A4	Date:	Rev:
KiCad E.D.A. kicad (6.0.0–0)		Id: 3/4

