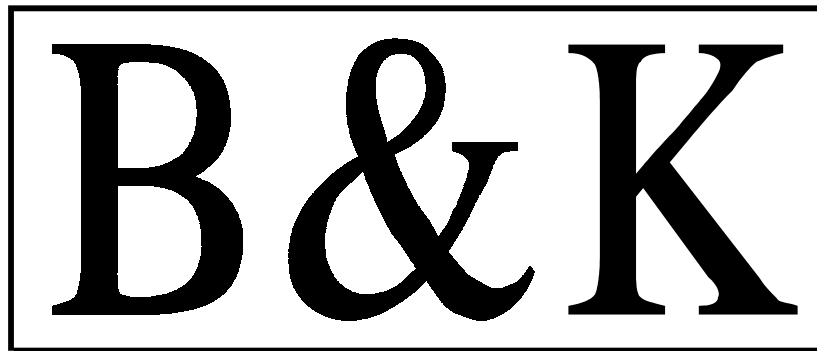


WE SIMPLY SOUND BETTER.

Reference 7250 / 7260

SERVICE MANUAL

B&K COMPONENTS, LTD.
2100 Old Union Road
Buffalo, New York 14227-2725
U.S.A.



WE SIMPLY SOUND BETTER.

Pictures

B&K COMPONENTS, LTD.
2100 Old Union Road
Buffalo, New York 14227-2725
U.S.A.

Reference 7250 series II Amplifier



B&K Components, Ltd. Reference 7250 series II

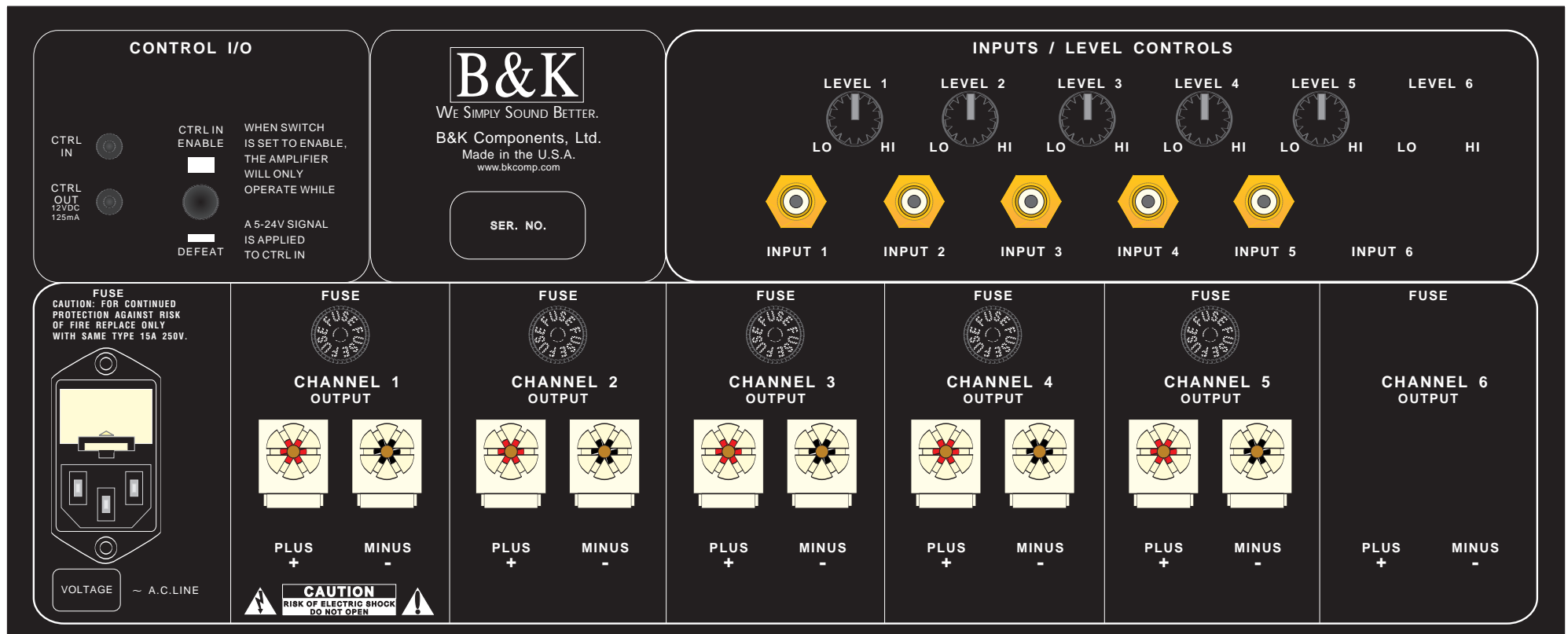
Multi Channel Amplifier

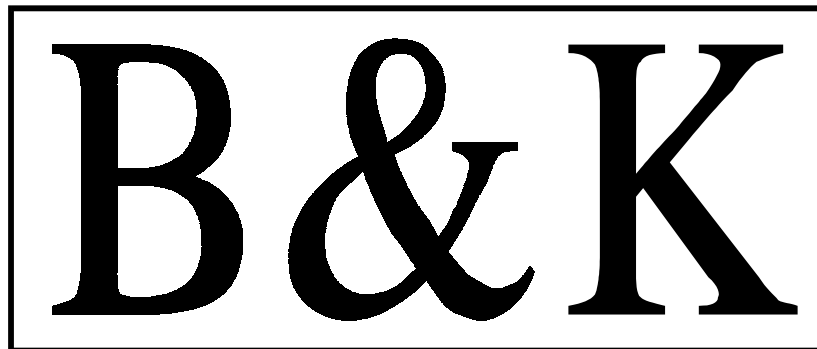


*POWER
ON/OFF*



Reference 7250 Amplifier

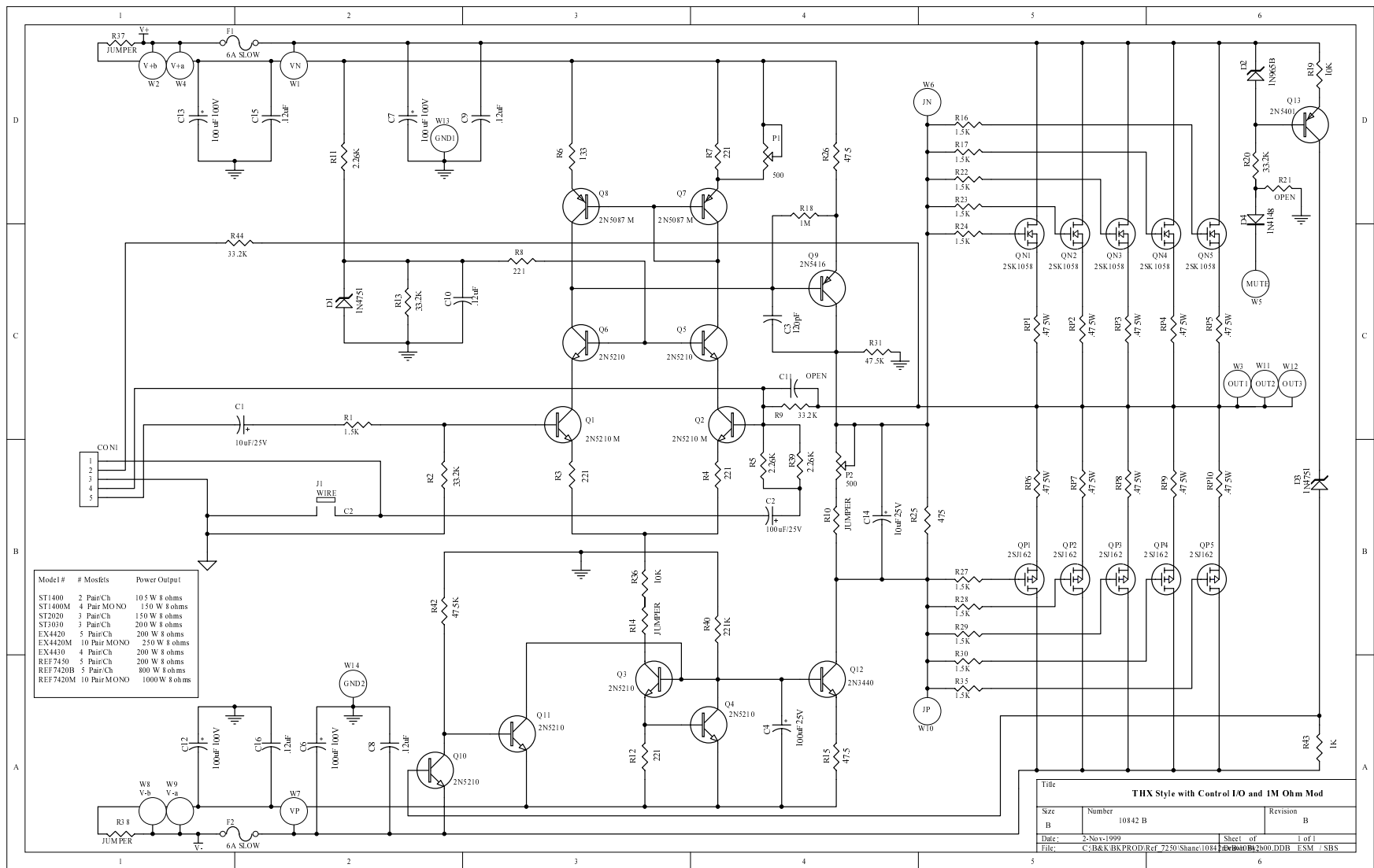


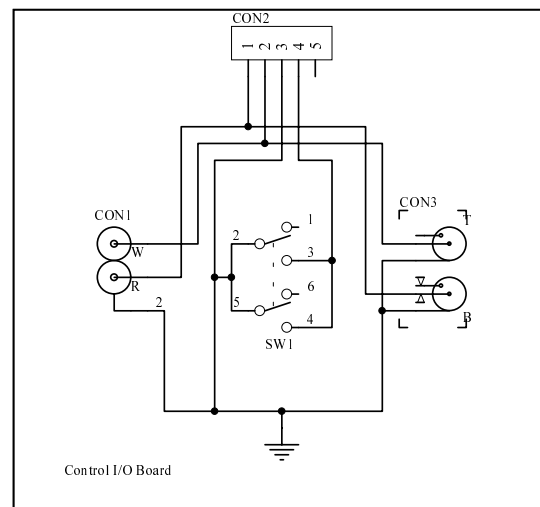


WE SIMPLY SOUND BETTER.

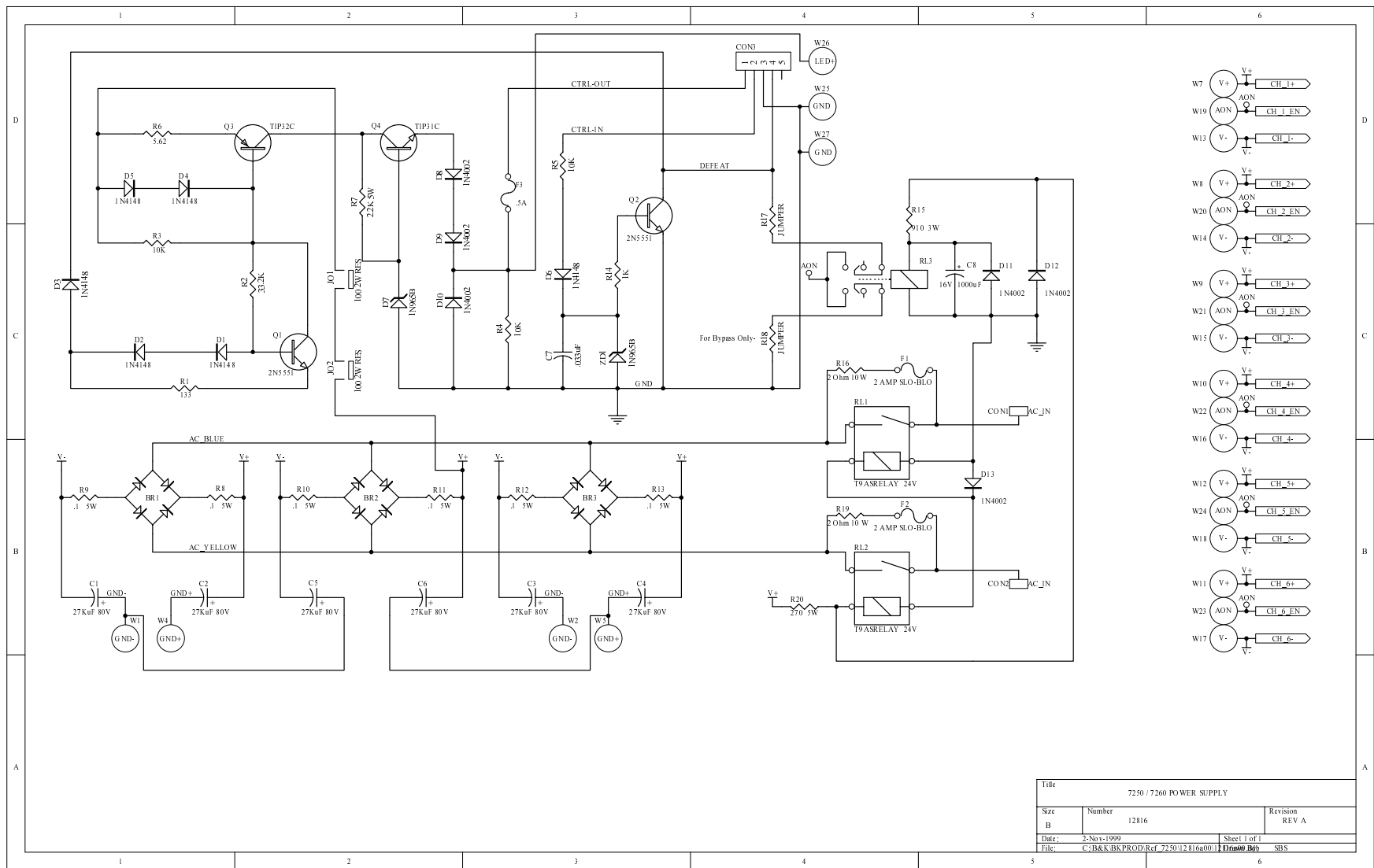
Schematics

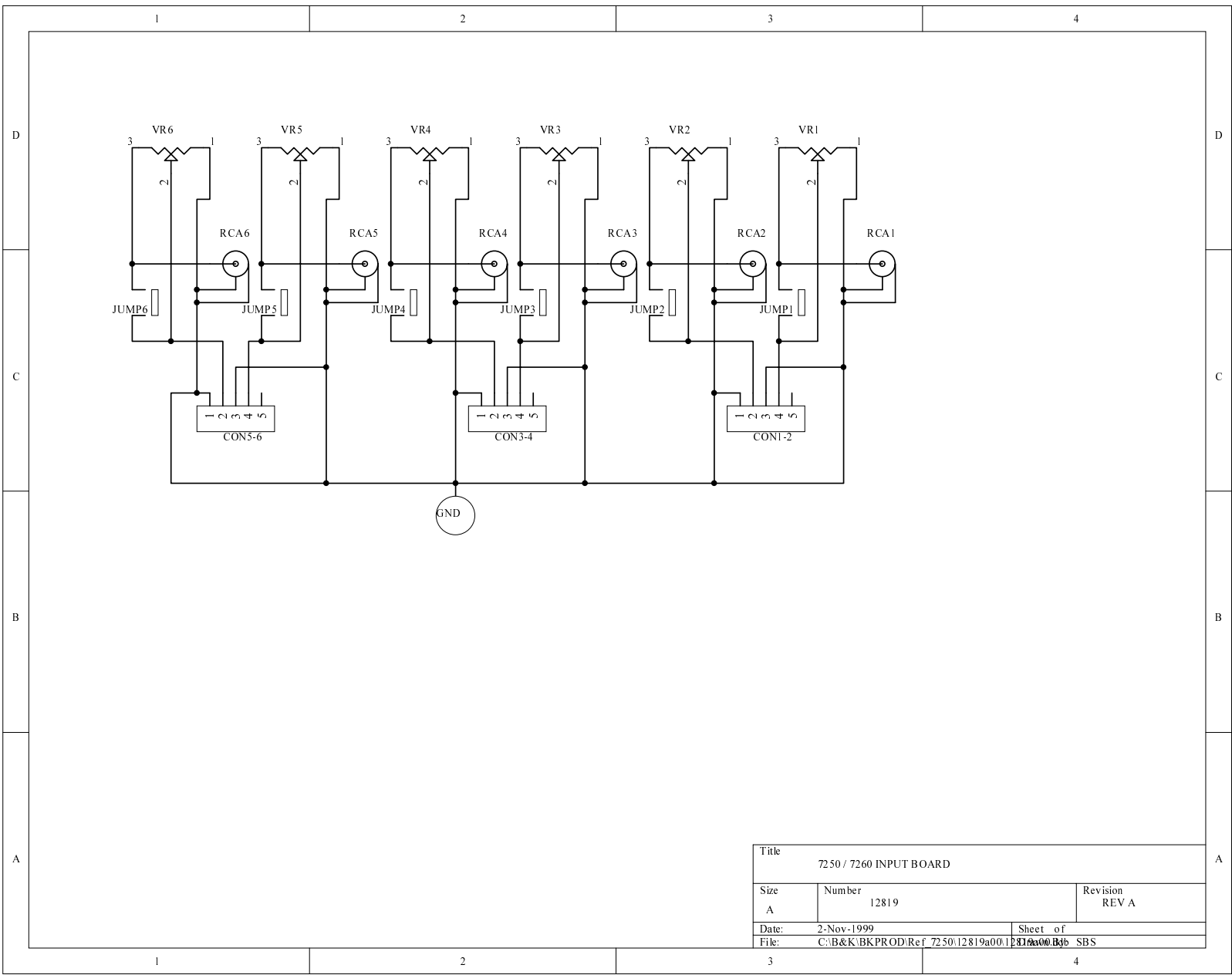
B&K COMPONENTS, LTD.
2100 Old Union Road
Buffalo, New York 14227-2725
U.S.A.



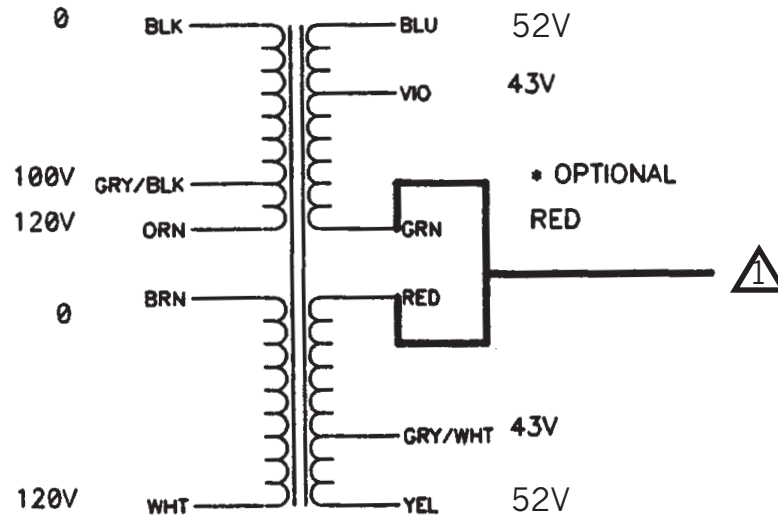


Title				CONTROL I/O BOARD			
Size A		Number 12820				Revision REV -	
Date: 2-Nov-1999		Sheet of 12820a00.1		12820a00.1			
File: C:\B&K\BK PROD\Ref 7250\12820a00.1		12820a00.1		B&K SBS			






1500VA MULTI SEC/PRI TOROID



ALL LEADS EXCEPT  TERMINATED WITH 0.250 INSULATED FEMALE DISCONNECT (PANDUIT DNF14-250FIB OR APP'D EQUIV.)

 TERMINATED WITH VINYL INSULATED RING TERMINAL FOR #10 STUD (PANDUIT PV12-10HDR OR APP'D EQUIV.)

THE SECONDARY VOLTAGES LISTED ARE FOR FULL LOAD CONDITIONS MAX DIMENSIONS OF TOROIDAL TRANSFORMER:

HEIGHT: 4.75"
DIAMETER: 6.75"

LEADS: 10" LENGTH 14 AWG TEW 105 DEG. C - LEADS TO BE BROUGHT OUT SIDE OF CASE NEAR BOTTOM WITH PRIMARY/SECONDARY LEADS SPLIT 180 DEGREES TRANSFORMER TO BE SUPPLIED WITH CYLINDRICAL DECORATIVE COVER - COLOR BLACK. TRANSFORMER POTTING COMPOUND TO EXTEND TO LOWER LIP OF COVER TO PROVIDE FLUSH MOUNTING SURFACE MOUNTING: SINGLE CENTER 3/8" - 16 THREADED INSERT (must be a 3/8" = 0.375" = 9.525mm mounting hole) EXTENDING A MINIMUM OF 2" FROM BOTTOM ISOLATION PAD: 1/4" THICK NEOPRENE RUBBER

Rev D Increased length of all wires 1 inch - primaries and secondaries. 10/22/99

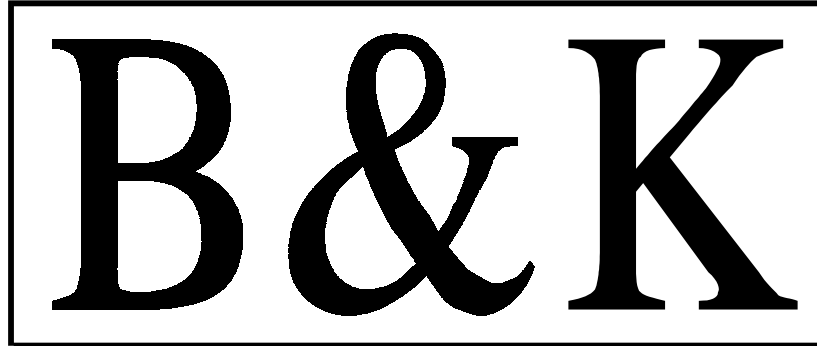
Rev C Increased Max. Diameter to 6.75" 9/22/99
Isolation Pad Specifications:
1/4" Thick Neoprene Rubber

Rev B Added Potting Spec 8/30/99
Added Mounting Insert Length Spec
Added Lead Termination Specs

Rev A Chg. Sec. Voltage from 48V to 52 V 7/8/99
Added Lead Routing Spec
Added Mounting Insert Spec

B&K COMPONENTS LTD.

Size	Number	Rev
A	P/N 12786 1500VA MULTI SEC/PRI SK-RWW-5/31/99-A	D
Date	10/22/99	Drawn By RWW/SBS

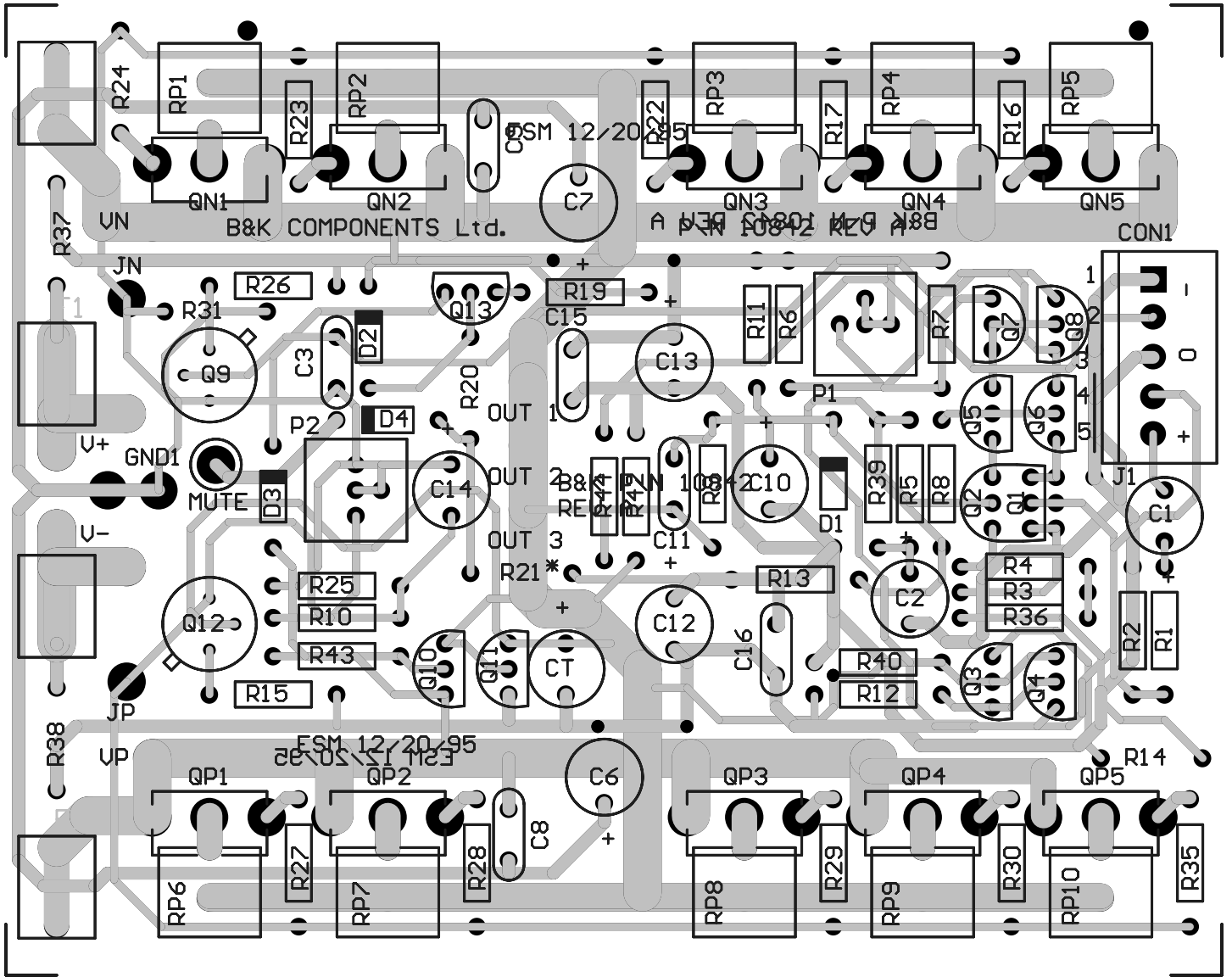


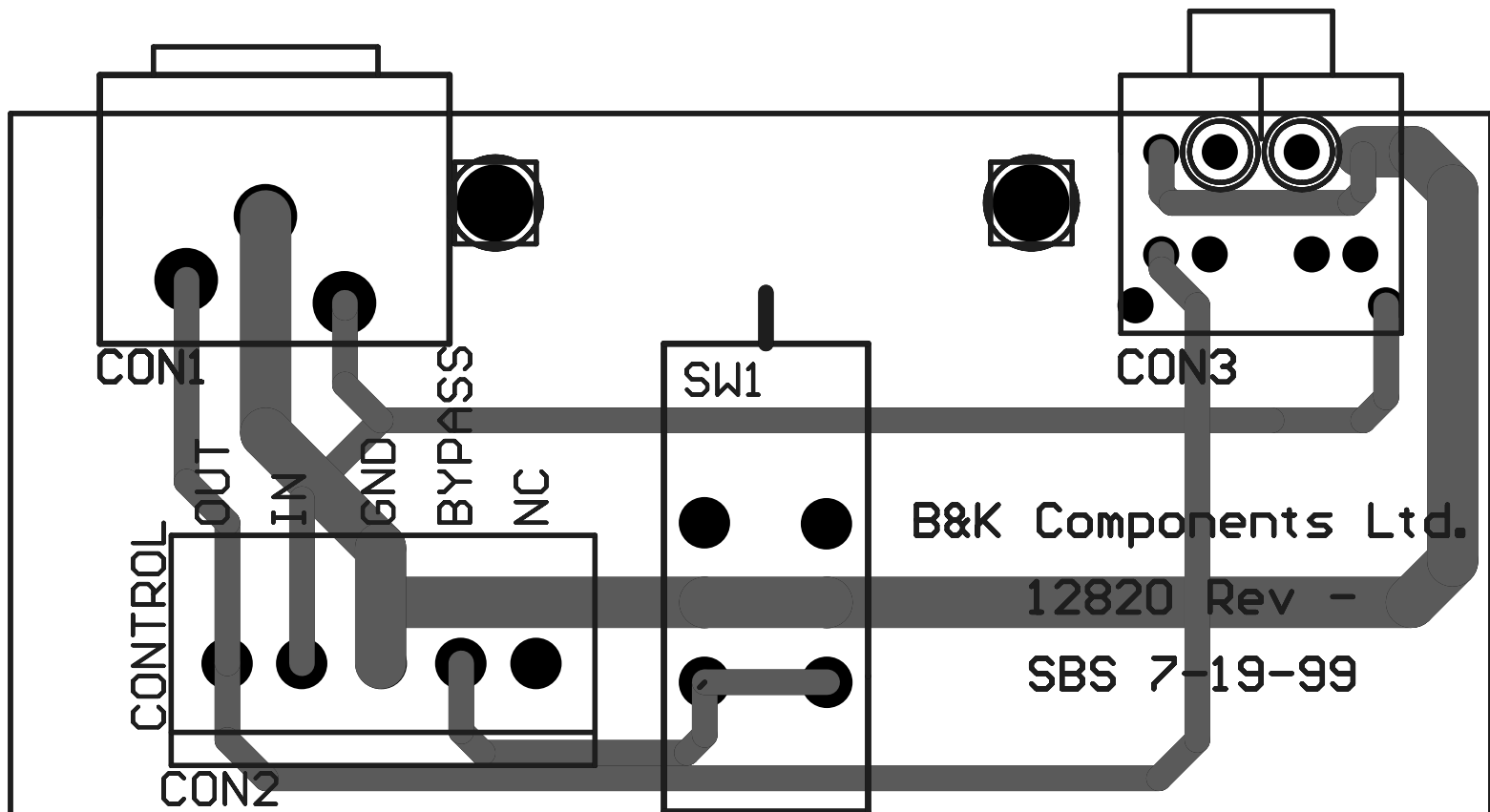
WE SIMPLY SOUND BETTER.

Printed Circuit Boards

PCB's

B&K COMPONENTS, LTD.
2100 Old Union Road
Buffalo, New York 14227-2725
U.S.A.

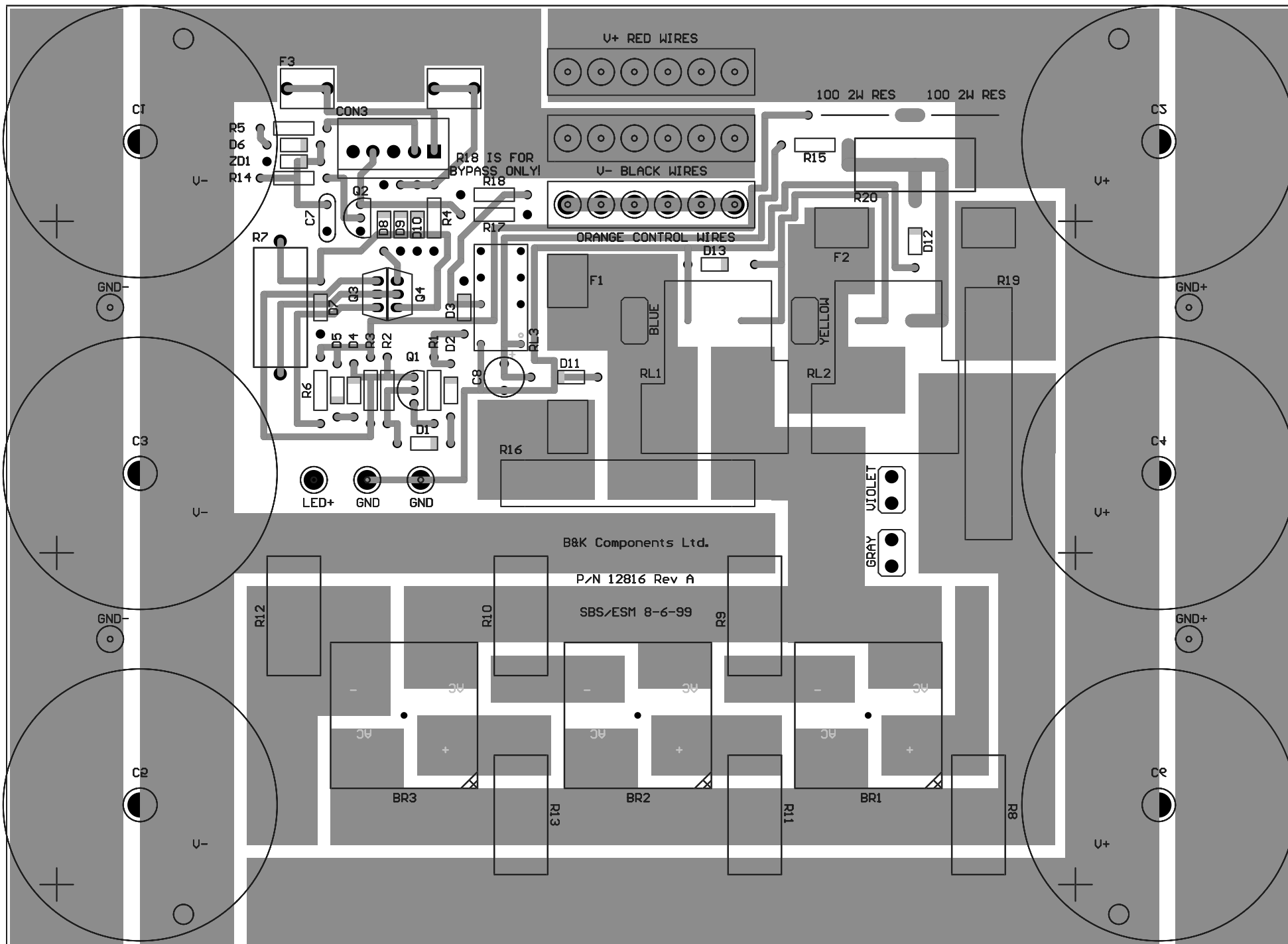




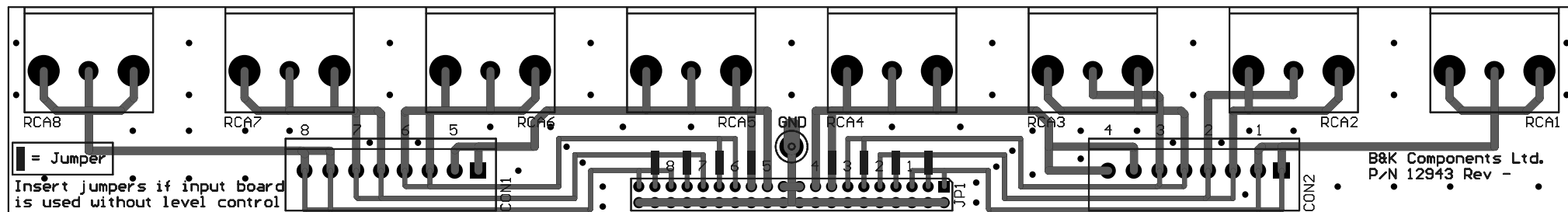
Holes within a circle are not to be plated through

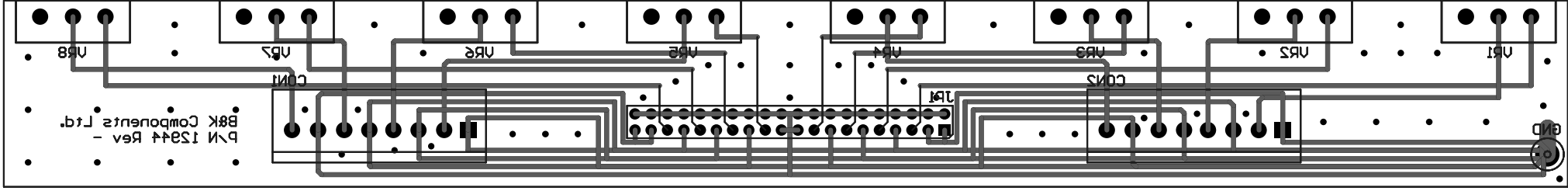
2 X .102

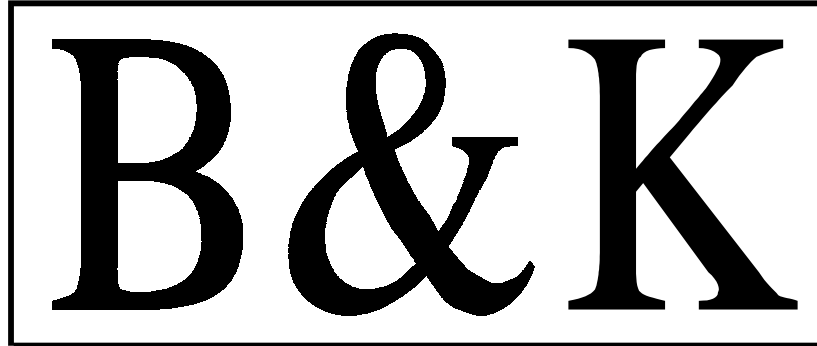
2 X .125



Holes Within A Circle Are Not to Be Plated Through
 6 x .187
 4 x .078







WE SIMPLY SOUND BETTER.

Bill of Materials

BOM's

B&K COMPONENTS, LTD.
2100 Old Union Road
Buffalo, New York 14227-2725
U.S.A.

Bill of Material for 10842b00.Bom

Used	Part Type	Designator	Footprint	Description
5	.12uF	C8 C9 C10	RAD200	CAPACITOR
10	.47 5W	C15 C16 RP1 RP2 RP3 RP4 RP5 RP6 RP7 RP8 RP9 RP10	R5W. S	RESISTOR
1	1.5K	R24	RES400	RESISTOR
10	1.5K	R1 R16 R17 R22 R23 R27 R28 R29 R30 R35	RES500	RESISTOR
1	1K	R43	RES500	RESISTOR
1	1M	R18	RES400	RESISTOR
1	1N965B	D2	DIODE. 4	ZENER DIODE
1	1N4148	D4	DIODE. 4	DIODE
1	1N4751	D3	DIODE. 4	ZENER DIODE
1	1N4751	D1	DIODE. 5	ZENER DIODE
3	2.26K	R5 R11 R39	RES500	RESISTOR
1	2N3440	Q12	T05	NPN TRANSISTOR
2	2N5087 M	Q7 Q8	T092	PNP TRANSISTOR
6	2N5210	Q3 Q4 Q5 Q6 Q10 Q11	T092	NPN TRANSISTOR
2	2N5210 M	Q1 Q2	T092	NPN TRANSISTOR
1	2N5401	Q13	T092	PNP TRANSISTOR
1	2N5416	Q9	T05	PNP TRANSISTOR
5	2SJ162	QP1 QP2 QP3 QP4 QP5	LATERAL3P	HITACHI P CH LATERAL MOSFET
5	2SK1058	QN1 QN2 QN3 QN4 QN5	LATERAL3P	HITACHI N CH LATERAL MOSFET
2	6A SLOW	F1 F2	FUSE. 3AG	FUSE
2	10K	R19 R36	RES500	RESISTOR
1	10uF 25V	C14	CAP200RP	POLAR CAPACITOR
1	10uF/25V	C1	CAP200RP	POLAR CAPACITOR
1	33.2K	R20	RES400	RESISTOR
4	33.2K	R2 R9 R13 R44	RES500	RESISTOR
2	47.5	R15 R26	RES500	RESISTOR
1	47.5K	R31	RES400	RESISTOR
1	47.5K	R42	RES500	RESISTOR
1	100uF 25V	C4	CAP200RP	POLAR CAPACITOR
2	100 uF 100V	C7 C13	CAP200RP	POLAR CAPACITOR
2	100uF 100V	C6 C12	CAP200RP	POLAR CAPACITOR
1	100uF/25V	C2	CAP200RP	POLAR CAPACITOR
1	120pF	C3	RAD200	CAPACITOR
1	133	R6	RES500	RESISTOR
5	221	R3 R4 R7 R8 R12	RES500	RESISTOR
1	221K	R40	RES500	RESISTOR
1	475	R25	RES500	RESISTOR
2	500	P1 P2	TRIMPOT	SINGLE POT
1	GND1	W13	PC_PAD	MOLEX 102" PC MOUNT CRIMP CONNECTOR
1	GND2	W14	PC_PAD	MOLEX 102" PC MOUNT CRIMP CONNECTOR
1	JN	W6	PC_PAD	MOLEX 102" PC MOUNT CRIMP CONNECTOR
1	JP	W10	PC_PAD	MOLEX 102" PC MOUNT CRIMP CONNECTOR
3	JUMPER	R14 R37 R38	RES400	RESISTOR
1	JUMPER	R10	RES500	RESISTOR
1	MUTE	W5	PC_PAD	MOLEX 102" PC MOUNT CRIMP CONNECTOR
1	OPEN	C11	RAD200	CAPACITOR
1	OPEN	R21	RES400	RESISTOR
1	OUT1	W3	PC_PAD	MOLEX 102" PC MOUNT CRIMP CONNECTOR
1	OUT2	W11	PC_PAD	MOLEX 102" PC MOUNT CRIMP CONNECTOR
1	OUT3	W12	PC_PAD	MOLEX 102" PC MOUNT CRIMP CONNECTOR
1	V+a	W4	PC_PAD	MOLEX 102" PC MOUNT CRIMP CONNECTOR
1	V+b	W2	PC_PAD	MOLEX 102" PC MOUNT CRIMP CONNECTOR
1	V-a	W9	PC_PAD	MOLEX 102" PC MOUNT CRIMP CONNECTOR
1	V-b	W8	PC_PAD	MOLEX 102" PC MOUNT CRIMP CONNECTOR
1	VN	W1	PC_PAD	MOLEX 102" PC MOUNT CRIMP CONNECTOR
1	VP	W7	PC_PAD	MOLEX 102" PC MOUNT CRIMP CONNECTOR
1	WIRE	J1	JUMP. 5	JUMPER (NORM OPEN)

Bill of Material for 12820a00.Bom

Used	Part Type	Designator	Footprint	Description
=====	=====	=====	=====	=====
1	PC_PAD	SW1	2PDT. 24	SWITCH DPDT
1	PC_PAD	CON3	7275-8NB	DUAL 3.5mm DUAL STEREO JACK similar to 35RAPC7J
1	PC_PAD	CON1	RCA.X1	R/W AUD CONN COMMON SHELL X 1
1	PC_PAD	CON2	SIP5	

Bill of Material for 12816a00.Bom

Used	Part Type	Designator	Footprint	Description
1	.5A	F3	FUSE.3AG	FUSE
6	.1 5W	R8 R9 R10 R11 R12 R13	RES5WAXIAL	RESISTOR
1	.033uF	C7	RAD200	CAPACITOR
1	1K	R14	RES500	RESISTOR
2	1N965B	D7 ZD1	DIODE.4	ZENER DIODE
6	1N4002	D8 D9 D10 D11 D12 D13	DIODE.5	DIODE
6	1N4148	D1 D2 D3 D4 D5 D6	DIODE.4	DIODE
1	2.2K 5W	R7	RES5WAXIAL	RESISTOR
2	2 AMP SLO-BLO	F1 F2	FUSE.3AG	FUSE
2	2N5551	Q1 Q2	T092	NPN TRANSISTOR
1	2 Ohm 10 W	R19	RES10WAXIAL	RESISTOR
1	2 Ohm 10W	R16	RES10WAXIAL	RESISTOR
1	5.62	R6	RES500	RESISTOR
3	10K	R3 R4 R5	RES500	RESISTOR
1	16V 1000uF	C8	CAP200RP	POLAR CAPACITOR
6	27KuF 80V	C1 C2 C3 C4 C5 C6	PCAP_2.BIG	POLAR CAPACITOR
1	33.2K	R2	RES500	RESISTOR
1	133	R1	RES500	RESISTOR
2	100 2W RES	J01 J02	JUMP.7	JUMPER (NORM OPEN)
1	270 5W	R20	RES5WAXIAL	RESISTOR
1	910 3W	R15	RES500	RESISTOR
2	AC_IN	CON1 CON2	FASTON.25	PC MOUNT FASTON CONNECTOR
6	AON	W19 W20 W21 W22 W23 W24 BR1 BR2 BR3	PC_PAD	MOLEX 102" PC MOUNT CRIMP CONNECTOR
3	BRIDGE_RECT	CON3	MOLEX5	BRIDGE RECTIFIER
1	CON5	RL3	DPDT_RLY1	DPDT RELAY
1	DPDT_RELAY_1	W4 W5	PC_PAD	MOLEX 102" PC MOUNT CRIMP CONNECTOR
2	GND+	W1 W2	PC_PAD	MOLEX 102" PC MOUNT CRIMP CONNECTOR
2	GND-	W25 W27	PC_PAD	MOLEX 102" PC MOUNT CRIMP CONNECTOR
2	GND	R17 R18	RES500	RESISTOR
2	JUMPER	W26	PC_PAD	MOLEX 102" PC MOUNT CRIMP CONNECTOR
1	LED+	RL1 RL2	T9ASRELAY	SPST RELAY 30AMP
2	T9ASRELAY 24V	Q4	T0220	NPN POWER TRANSISTOR
1	TIP31C	Q3	T0220	PNP POWER TRANSISTOR
1	TIP32C	W7 W8 W9 W10 W11 W12	PC_PAD	MOLEX 102" PC MOUNT CRIMP CONNECTOR
6	V+	W13 W14 W15 W16 W17 W18	PC_PAD	MOLEX 102" PC MOUNT CRIMP CONNECTOR
6	V-			

Bill of Material for 12943-00.Bom

Used	Part Type	Designator	Footprint	Description
2	CON8	CON1 CON2	MOLEX8	8 PIN MOLEX CONNECTOR
1	GND	W1	PC_PAD	MOLEX 102" PC MOUNT CRIMP CONNECTOR
1	HEADER_2X20	JP1	40PINHEAD	HEADER 20X2
8	RCA	RCA1 RCA2	PCB_RCA	RCA CONNECTOR
		RCA3 RCA4		
		RCA5 RCA6		
		RCA7 RCA8		

Bill of Material for 12944-00.Bom

Used	Part Type	Designator	Footprint	Description
2	CON8	CON1 CON2	MOLEX8	8 PIN MOLEX CONNECTOR
1	GND	W1	PC_PAD	MOLEX 102" PC MOUNT CRIMP CONNECTOR
1	HEADER_2X20	JP1	40PINHEAD	HEADER 20X2
8	TRIM_POT	VR1 VR2	SINGLPOT	Trim Pot
		VR3 VR4		
		VR5 VR6		
		VR7 VR8		