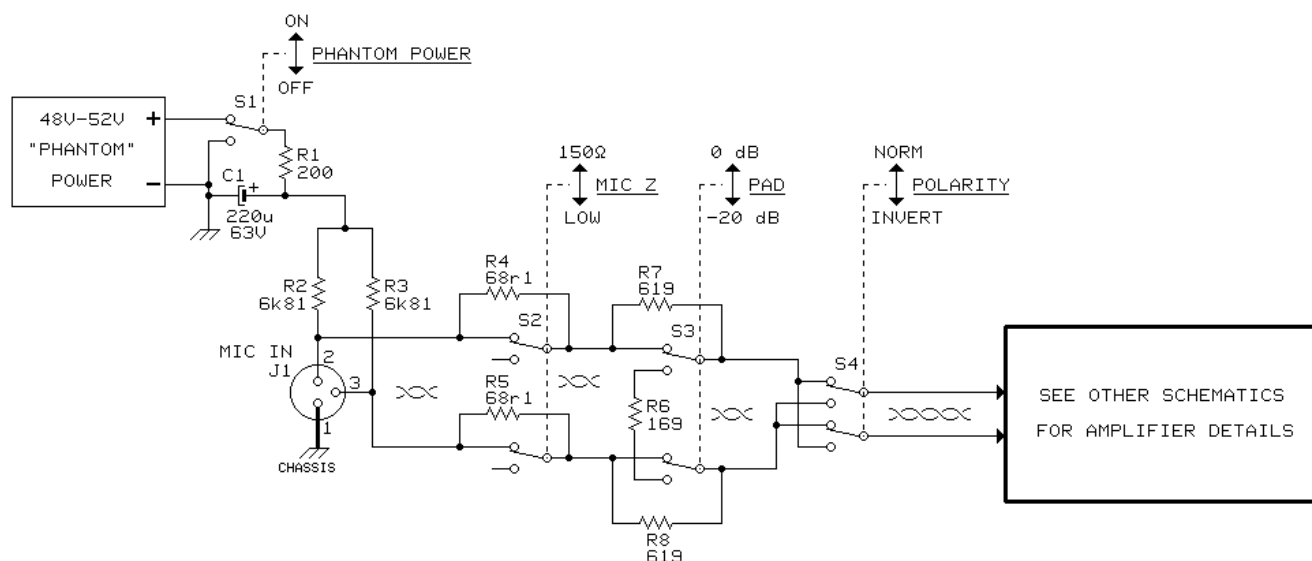


# STANDARD MICROPHONE PREAMP INPUT CIRCUITRY



## NOTES

ALL RESISTORS ARE  $\pm 1\%$   $1/4w$  METAL FILM TYPES, ROEDERSTEIN MK2-1 OR EQUIVALENT

TIGHTLY TWIST LEADS AS SHOWN  $\times\times$  IN PATH FROM J1 TO INPUT TRANSFORMER TO MINIMIZE ELECTROMAGNETIC PICKUP

RESISTORS R2 AND R3 SHOULD BE MATCHED TO  $\pm 0.1\%$  FOR BEST COMMON MODE NOISE REJECTION

USE ONLY QUALITY SWITCHES WITH GOLD PLATED "VIRGIN" CONTACTS AT S2, S3, AND S4

USE OF GOLD PLATED CONTACTS IN XLR CONNECTOR AT J1 IS HIGHLY RECOMMENDED

ALL RESISTORS IN OHMS ( 6k81 = 6.81k, 68r1 = 68.1 )

MAKE THE J1, PIN 1 CONNECTION TO CHASSIS AS SHORT AND DIRECT AS POSSIBLE.

© COPYRIGHT 1992, JENSEN TRANSFORMERS, INC.

<b>jensen</b>	AS016
	09/20/94
7135 HAYVENHURST AVE. VAN NUYS, CALIFORNIA 91406 (818) 374-5857	