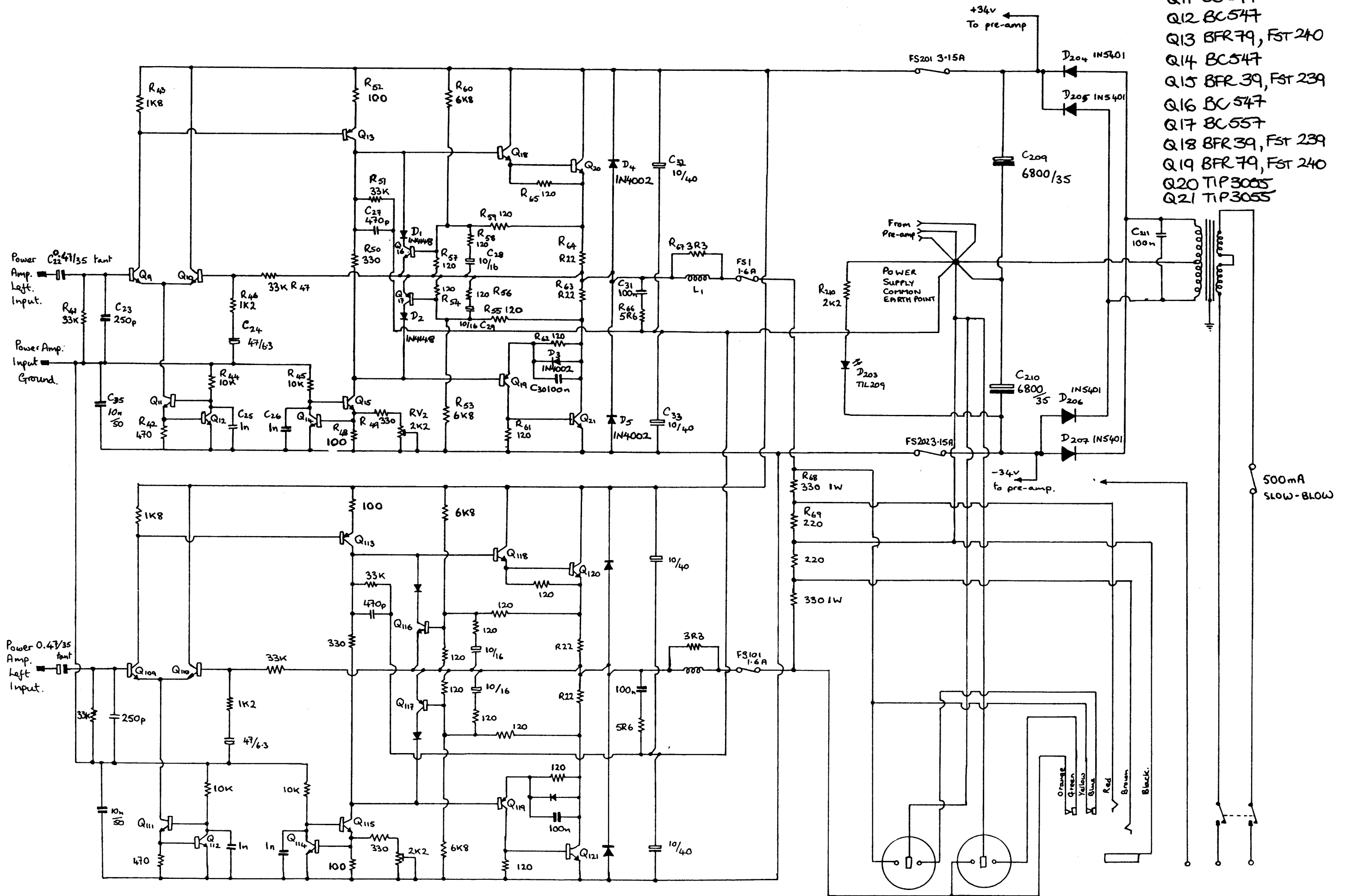
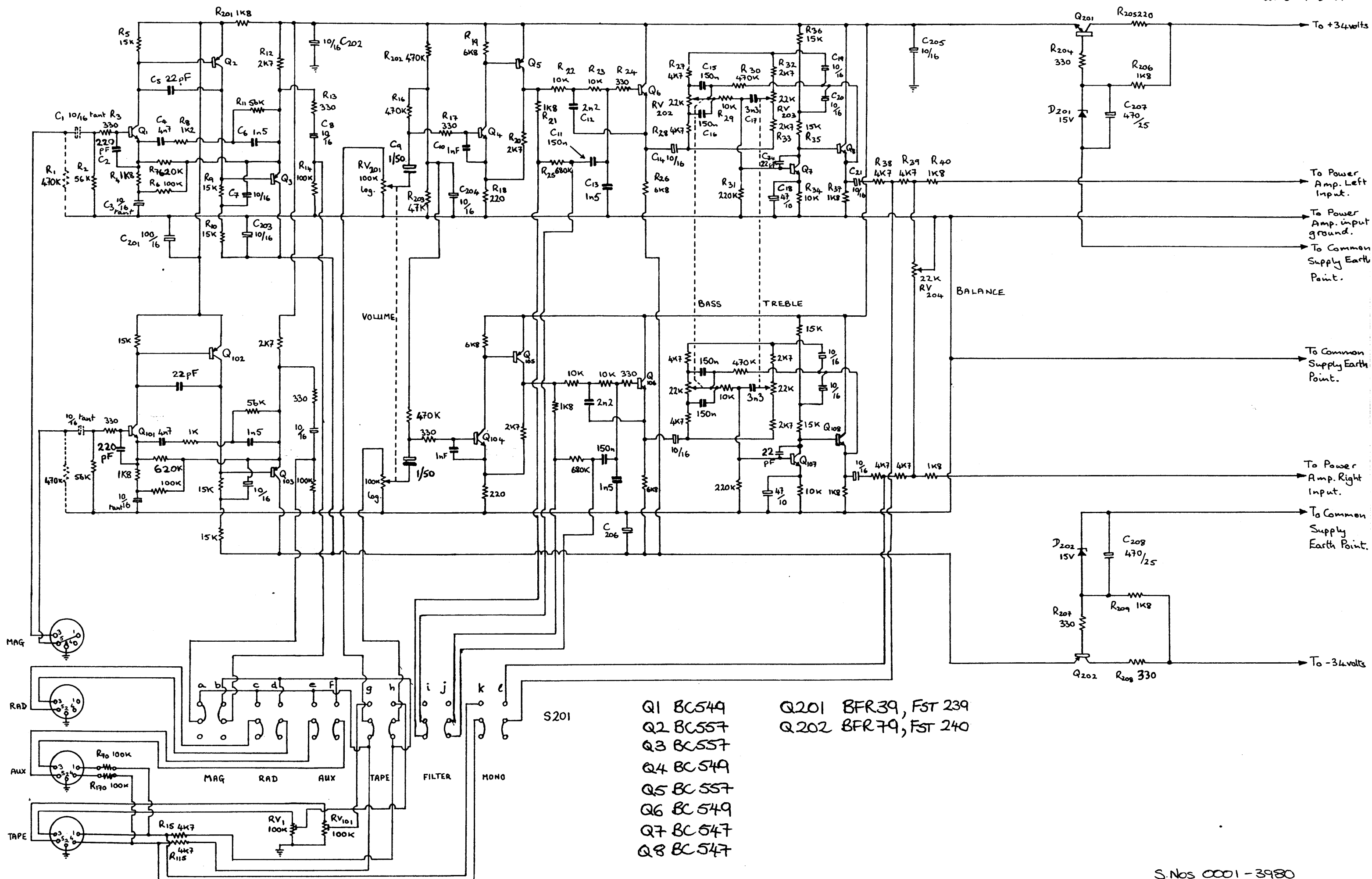
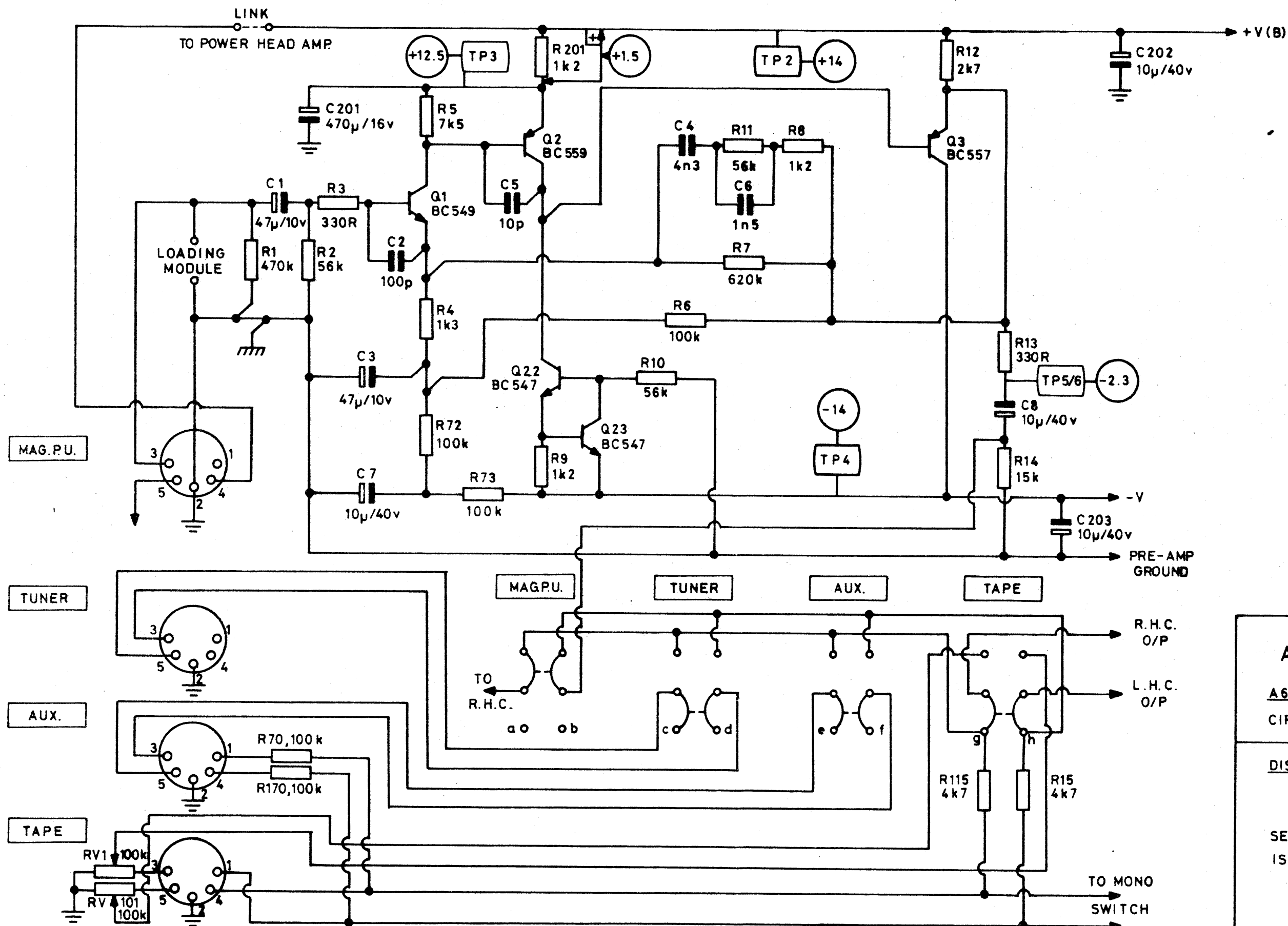


- Q9 BC547
- Q10 BC547
- Q11 BC547
- Q12 BC547
- Q13 BFR79, FST 240
- Q14 BC547
- Q15 BFR39, FST 239
- Q16 BC547
- Q17 BC557
- Q18 BFR39, FST 239
- Q19 BFR79, FST 240
- Q20 TIP3055
- Q21 TIP3055



S.No. 0001 - 3980



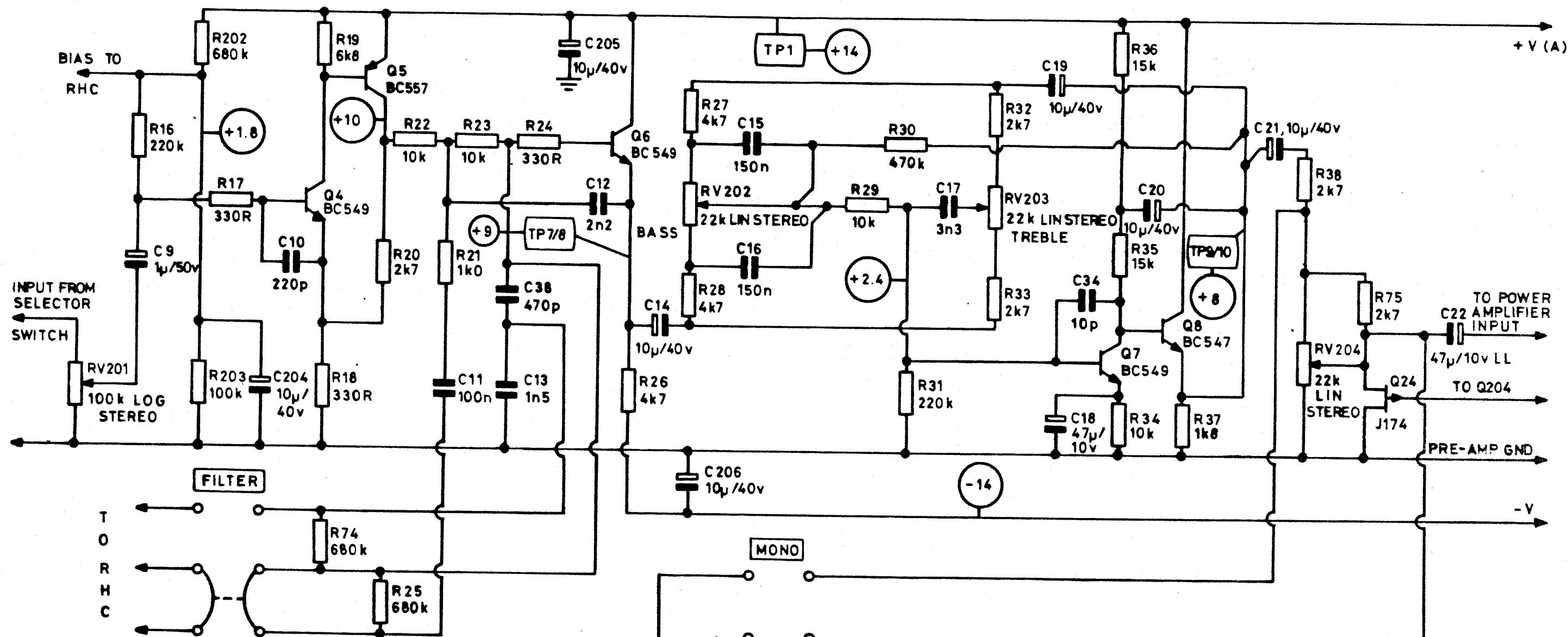


A & R CAMBRIDGE

A60 INTEGRATED AMPLIFIER
CIRCUIT DIAGRAM SHEET 1

DISC INPUT AND SELECTOR
SWITCH

SERIAL NUMBERS 3981-13249
ISSUE 5 MARCH 1982



A & R CAMBRIDGE

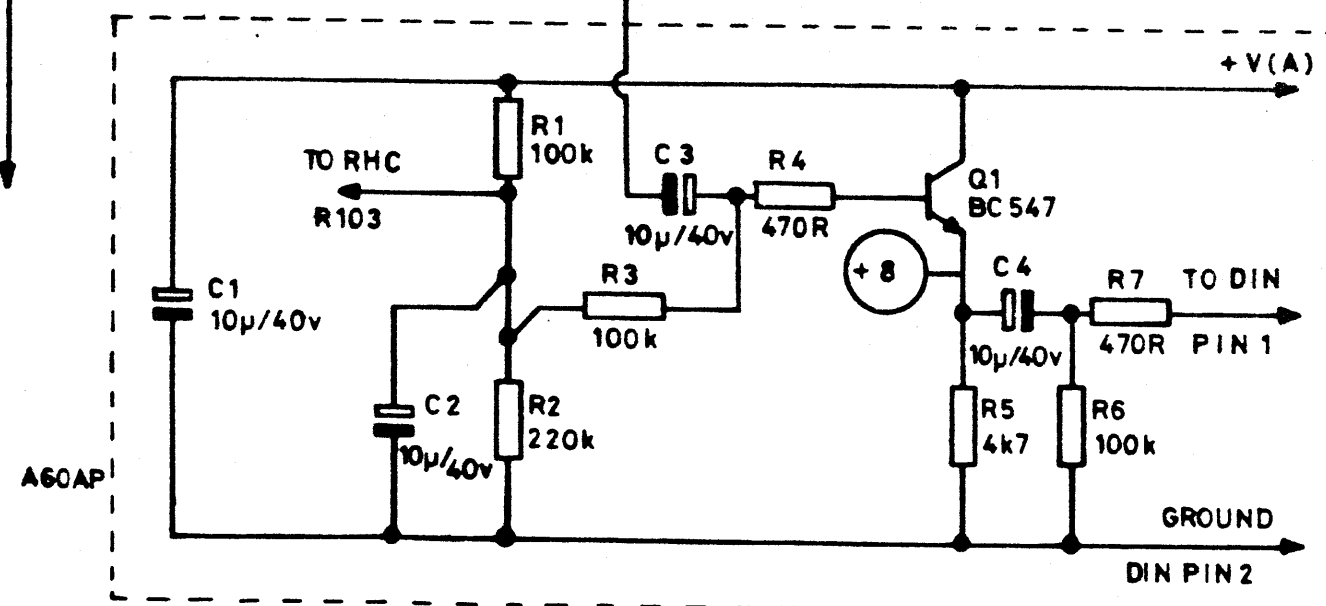
A60 INTEGRATED AMPLIFIER

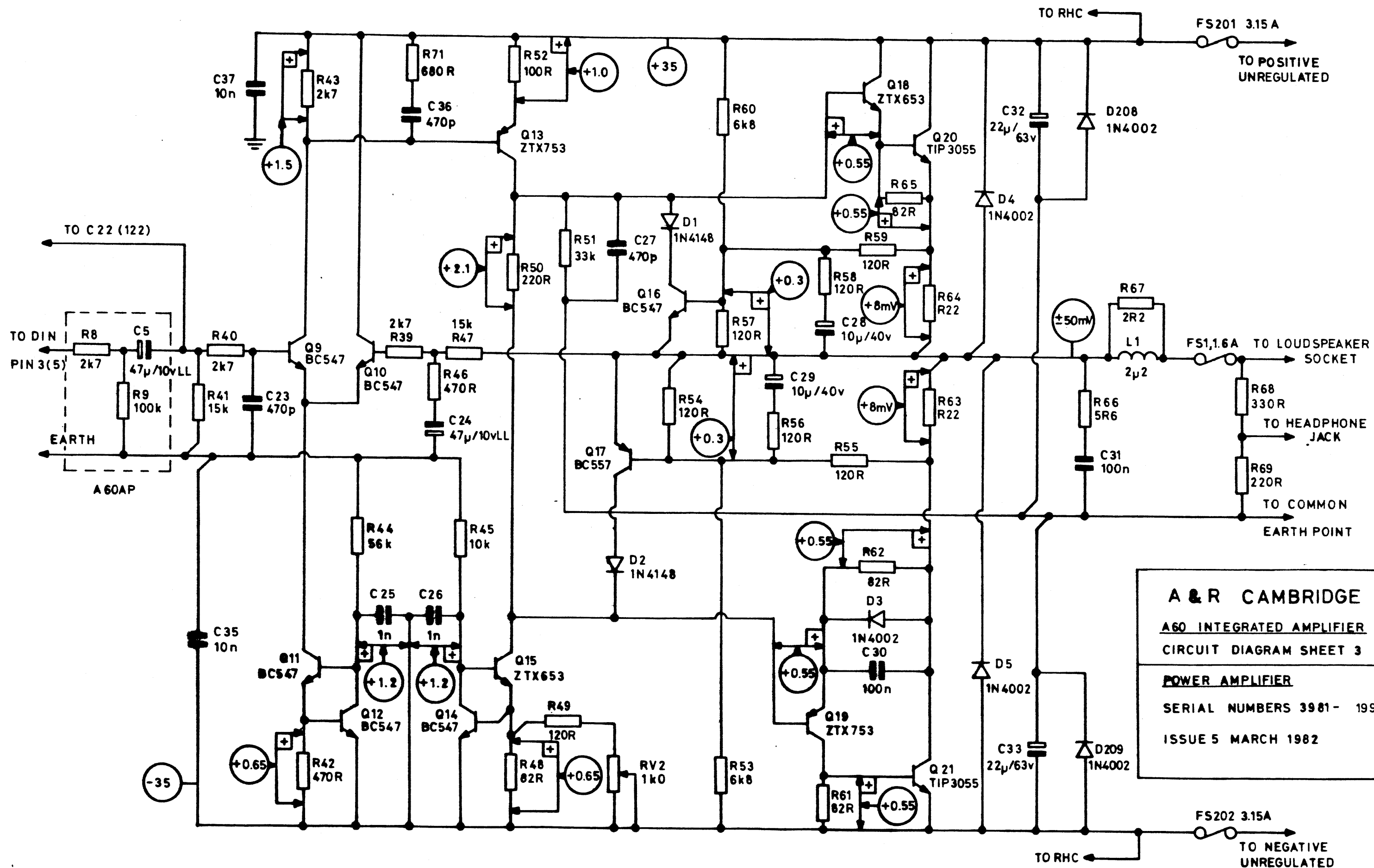
CIRCUIT DIAGRAM SHEET 2

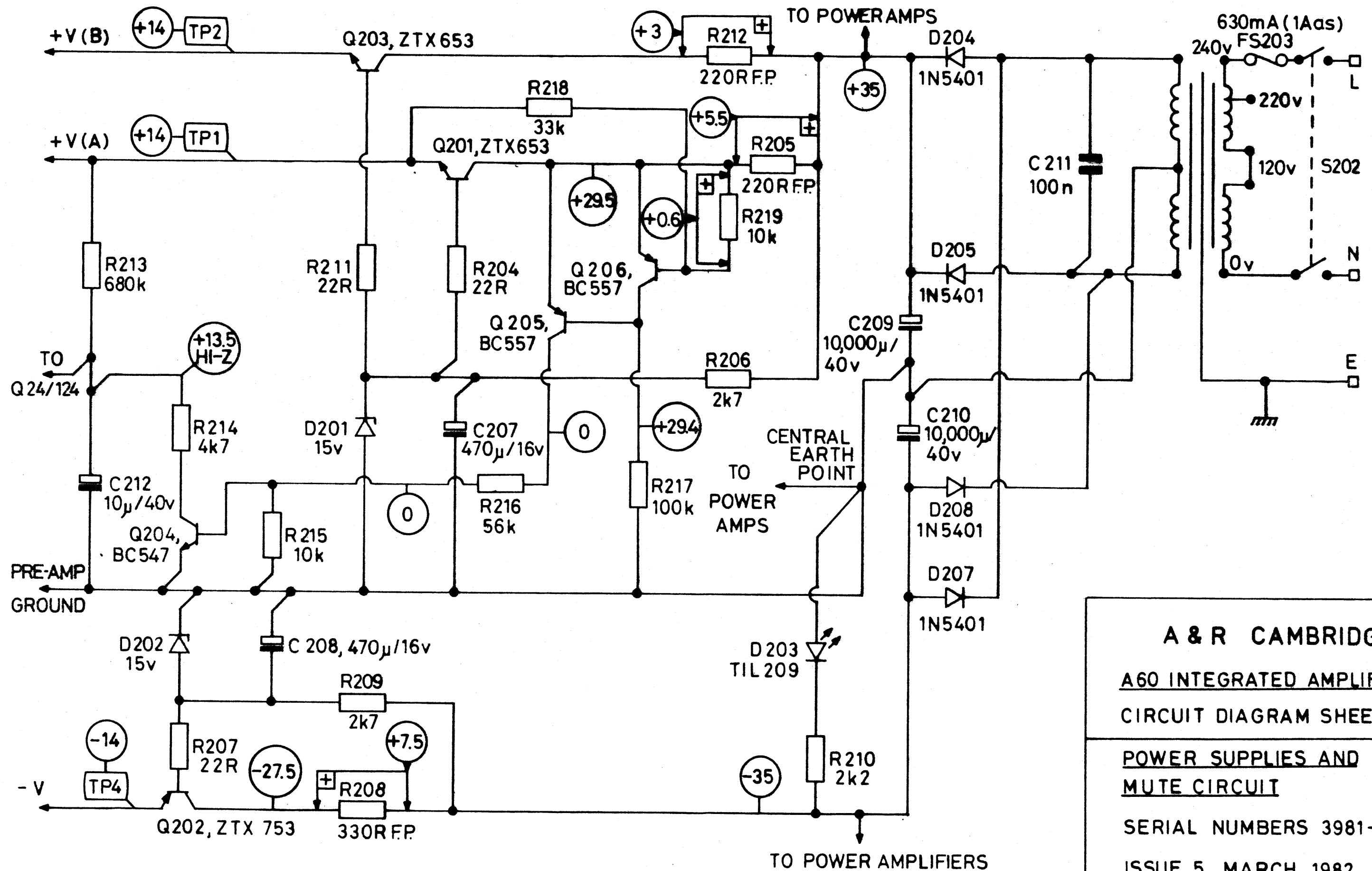
PREAMPLIFIER AND TONE CONTROL

SERIAL NUMBERS 3981 - 13249

ISSUE 5 MARCH 1982







A & R CAMBRIDGE

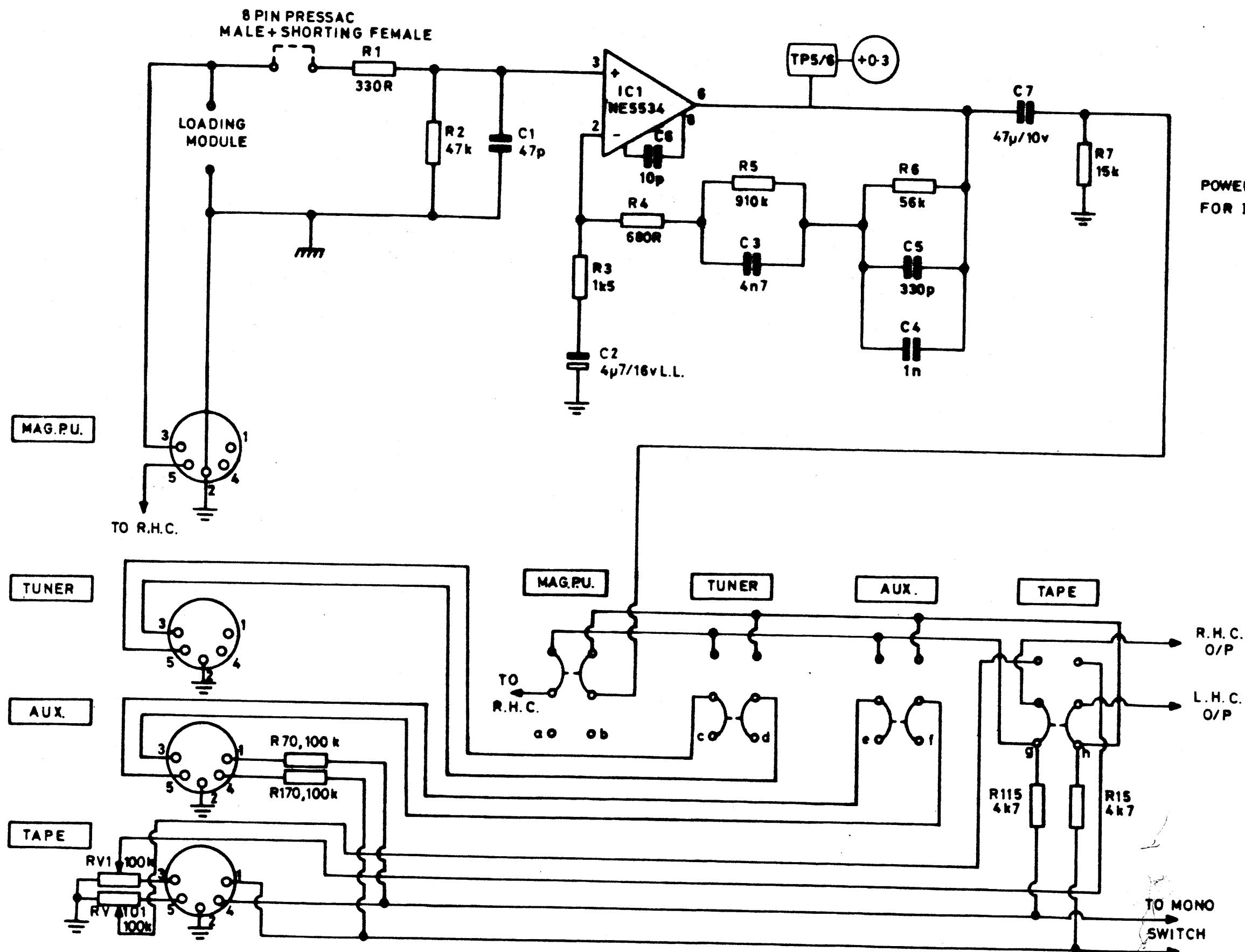
A60 INTEGRATED AMPLIFIER

CIRCUIT DIAGRAM SHEET 4

POWER SUPPLIES AND
MUTE CIRCUIT

SERIAL NUMBERS 3981-13249

ISSUE 5 MARCH 1982



A & R CAMBRIDGE

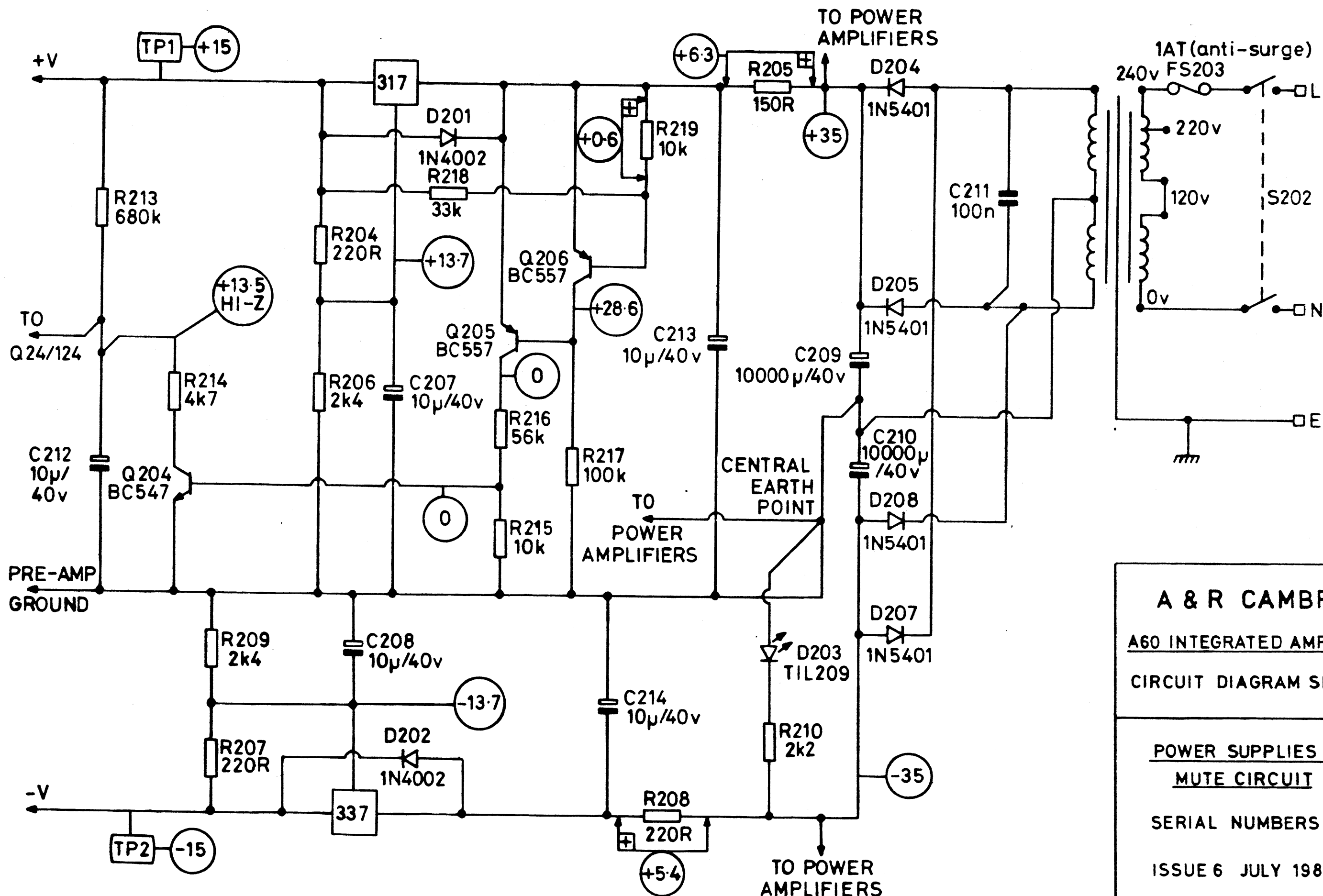
A60 INTEGRATED AMPLIFIER

CIRCUIT DIAGRAM SHEET 1

DISC INPUT AND SELECTOR
SWITCH

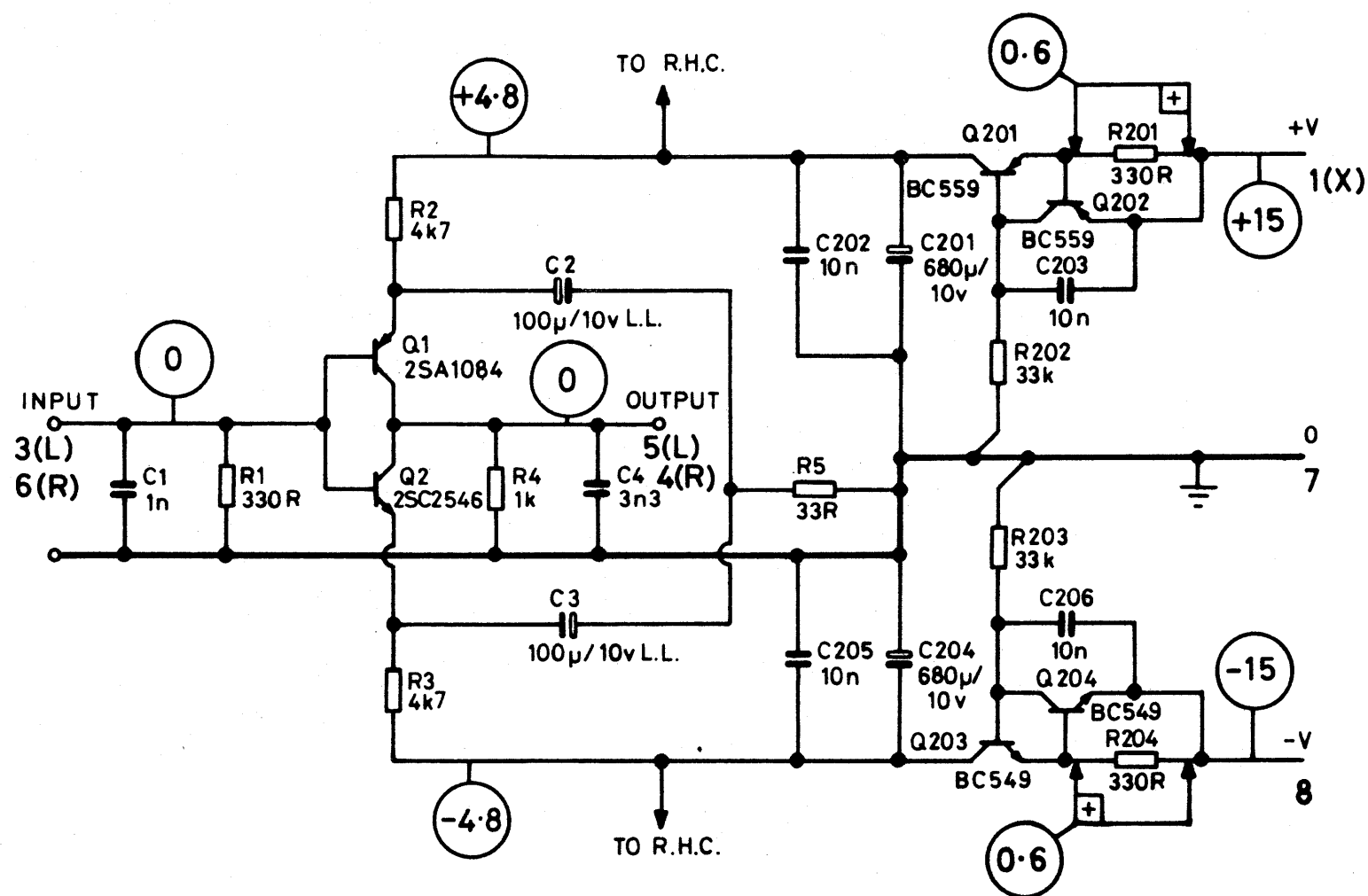
SERIAL NUMBERS 13250 - 19999

ISSUE 6 JULY 1982



A & R CAMBRIDGE
A60 INTEGRATED AMPLIFIER
CIRCUIT DIAGRAM SHEET 4

POWER SUPPLIES AND
MUTE CIRCUIT
 SERIAL NUMBERS 13250 - 19999
 ISSUE 6 JULY 1982



C 203, 206 CHANGED TO 1nF

A & R CAMBRIDGE LTD

A60 INTEGRATED AMPLIFIER

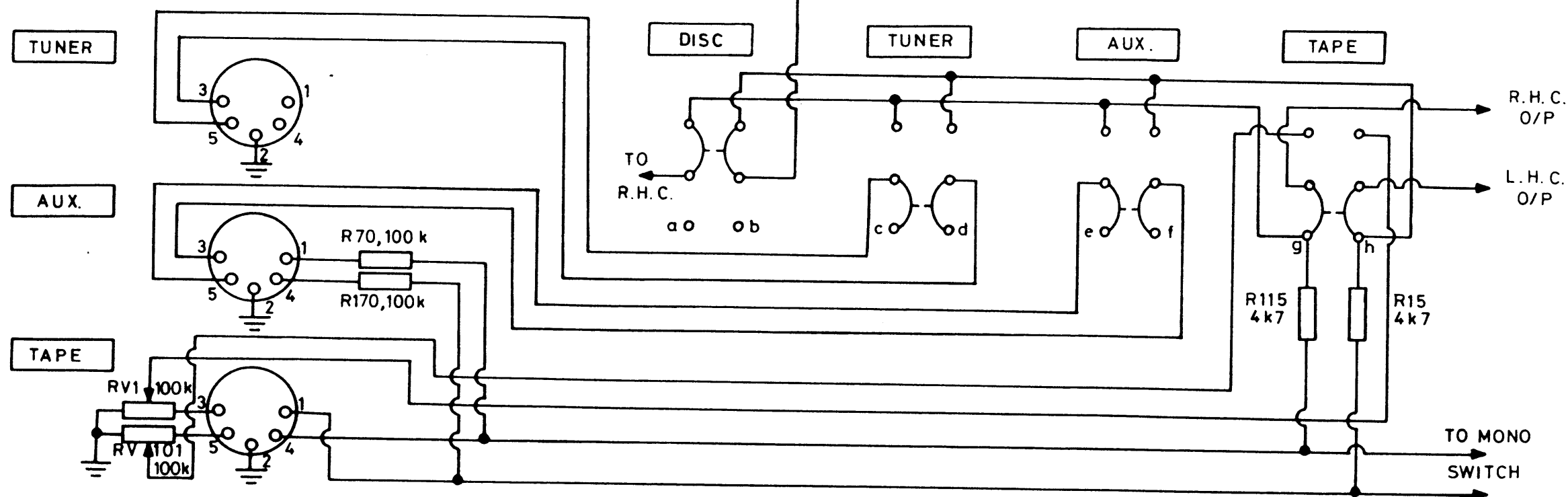
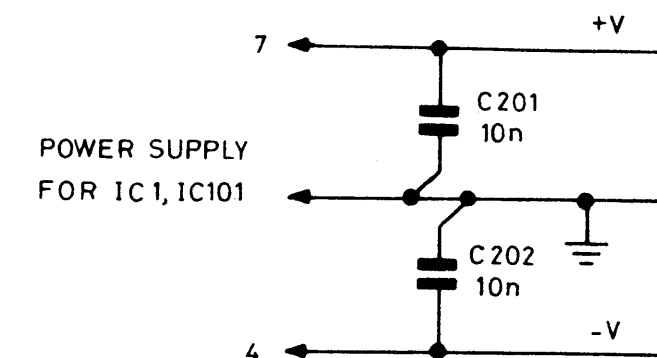
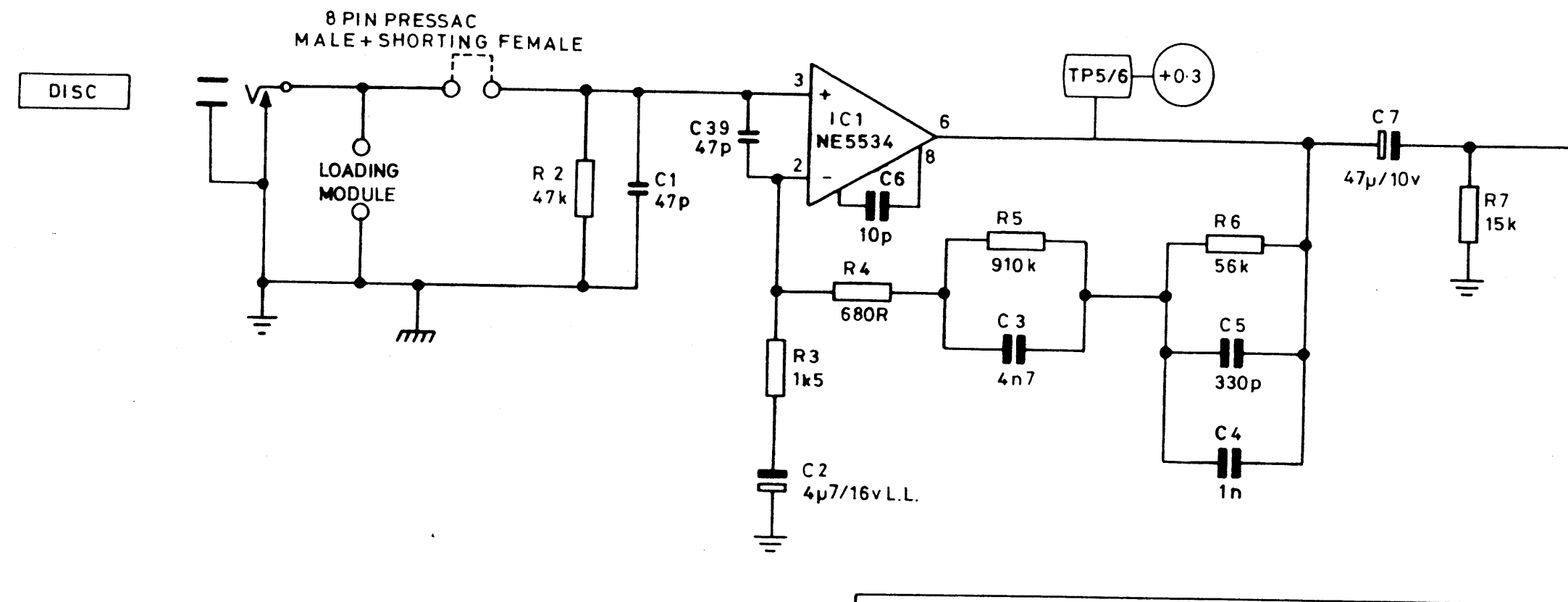
CIRCUIT DIAGRAM SHEET 5

MOVING COIL CARTRIDGE
PREAMPLIFIER MODULE MC60

FOR USE WITH A60 SERIAL
NUMBERS 13250 -

ISSUE 1 18 OCTOBER 1982

AND DELTA 90sn001-



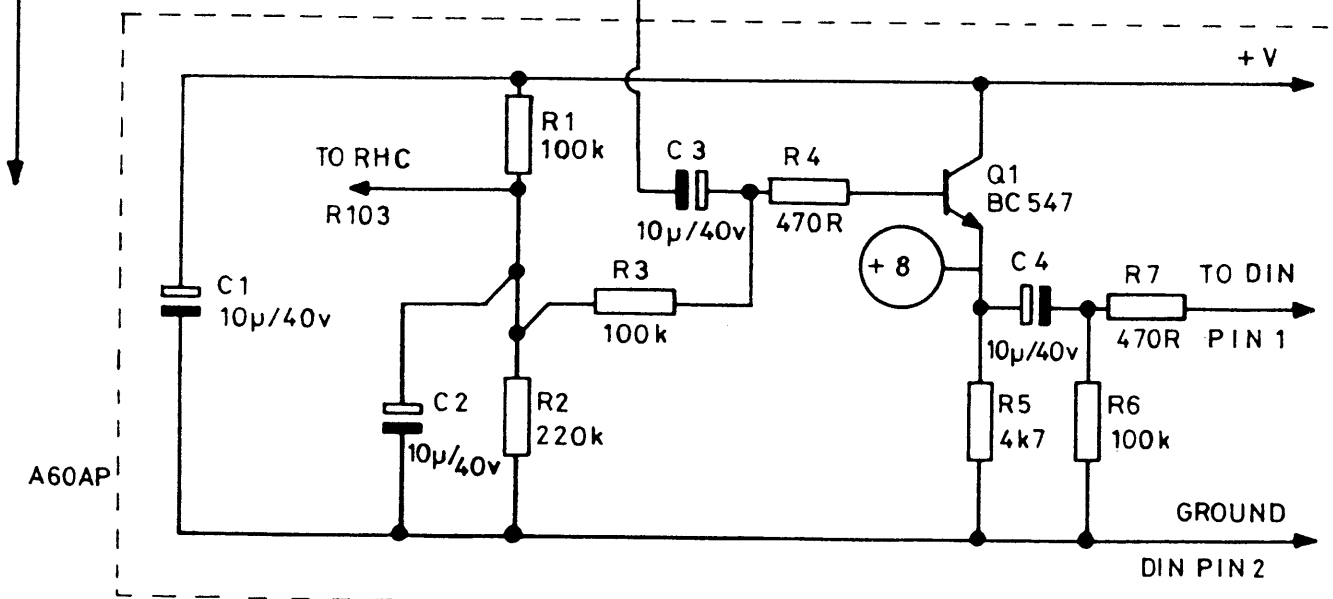
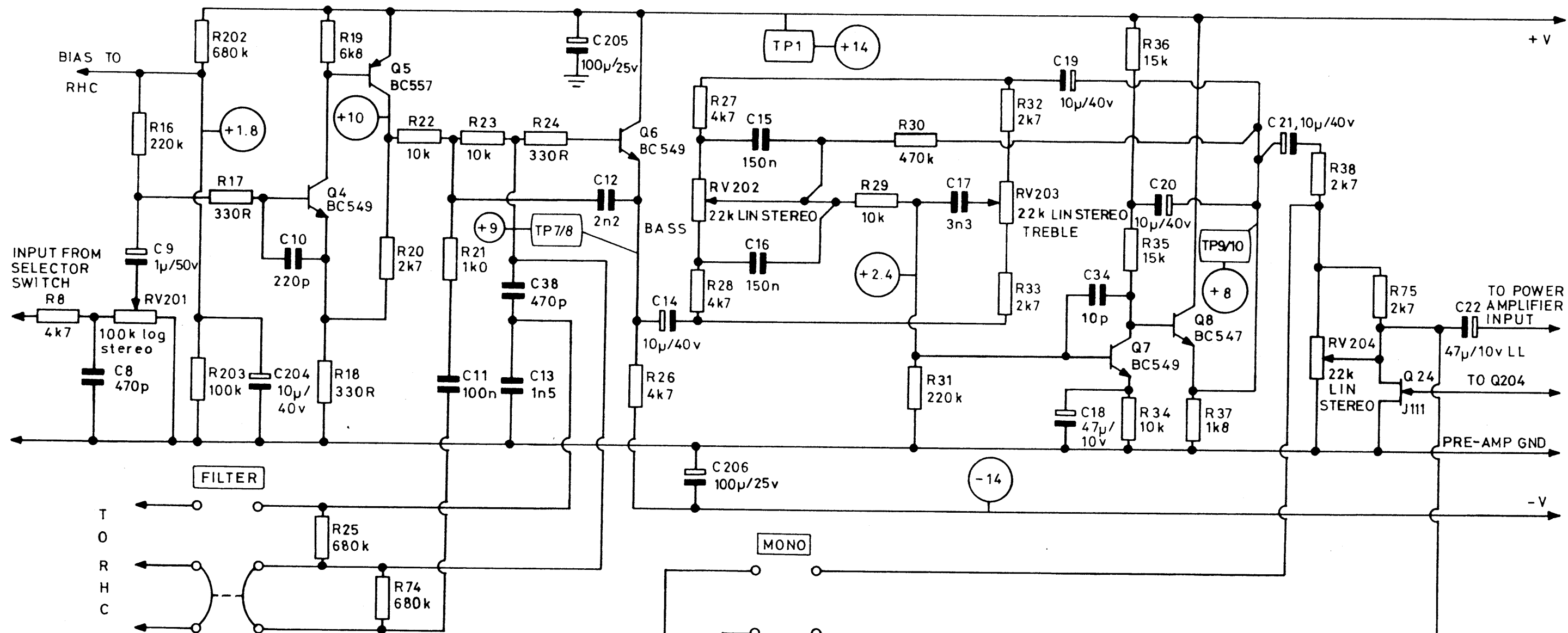
A & R CAMBRIDGE

A60 INTEGRATED AMPLIFIER

CIRCUIT DIAGRAM SHEET 1

DISC INPUT AND SELECTOR
SWITCH

SERIAL NUMBERS 20000 -
25501
ISSUE 7 AUGUST 1983



A & R CAMBRIDGE

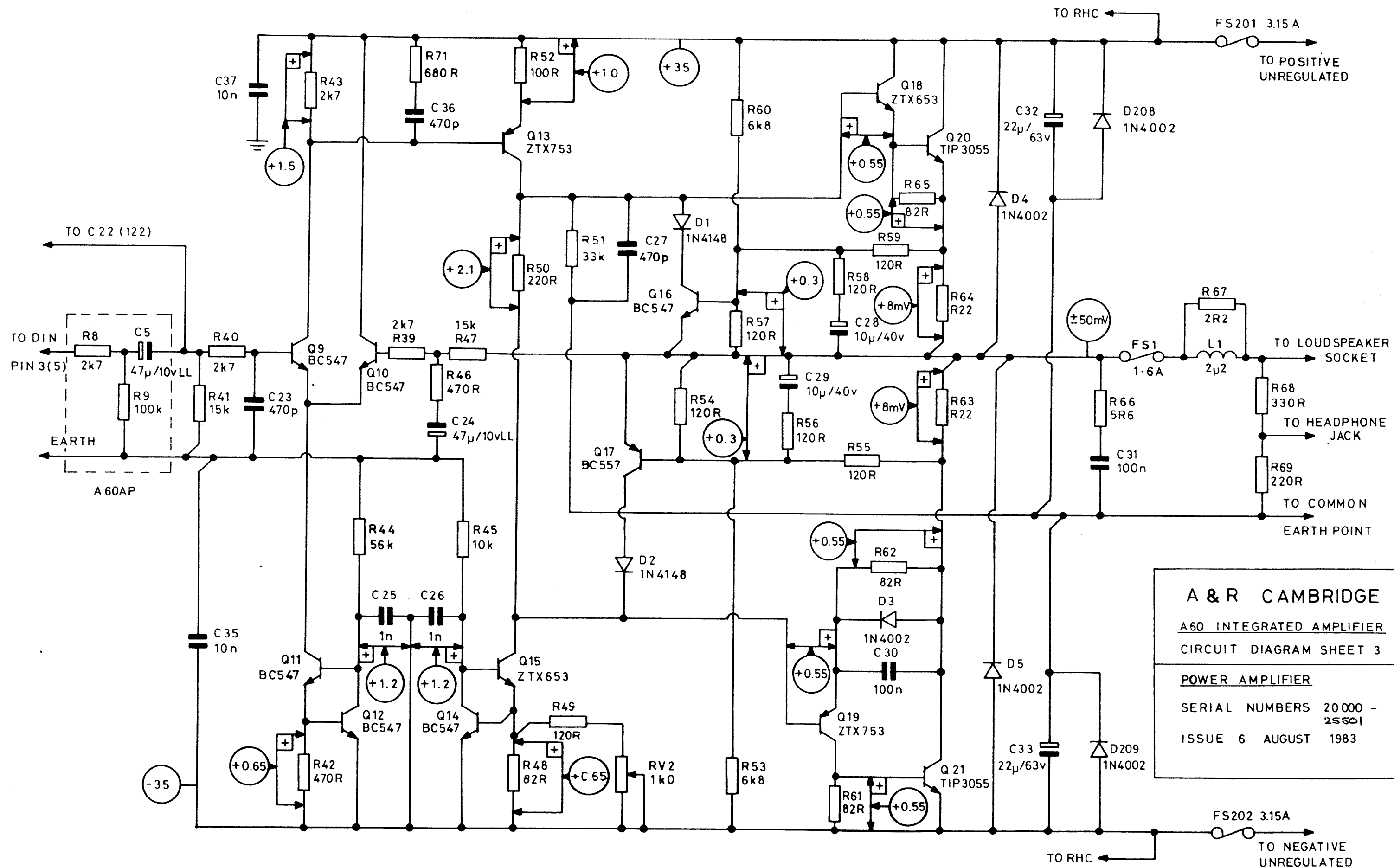
A60 INTEGRATED AMPLIFIER

CIRCUIT DIAGRAM SHEET 2

PREAMPLIFIER AND TONE CONTROL

SERIAL NUMBERS 20000 - 25501

ISSUE 7 AUGUST 1983

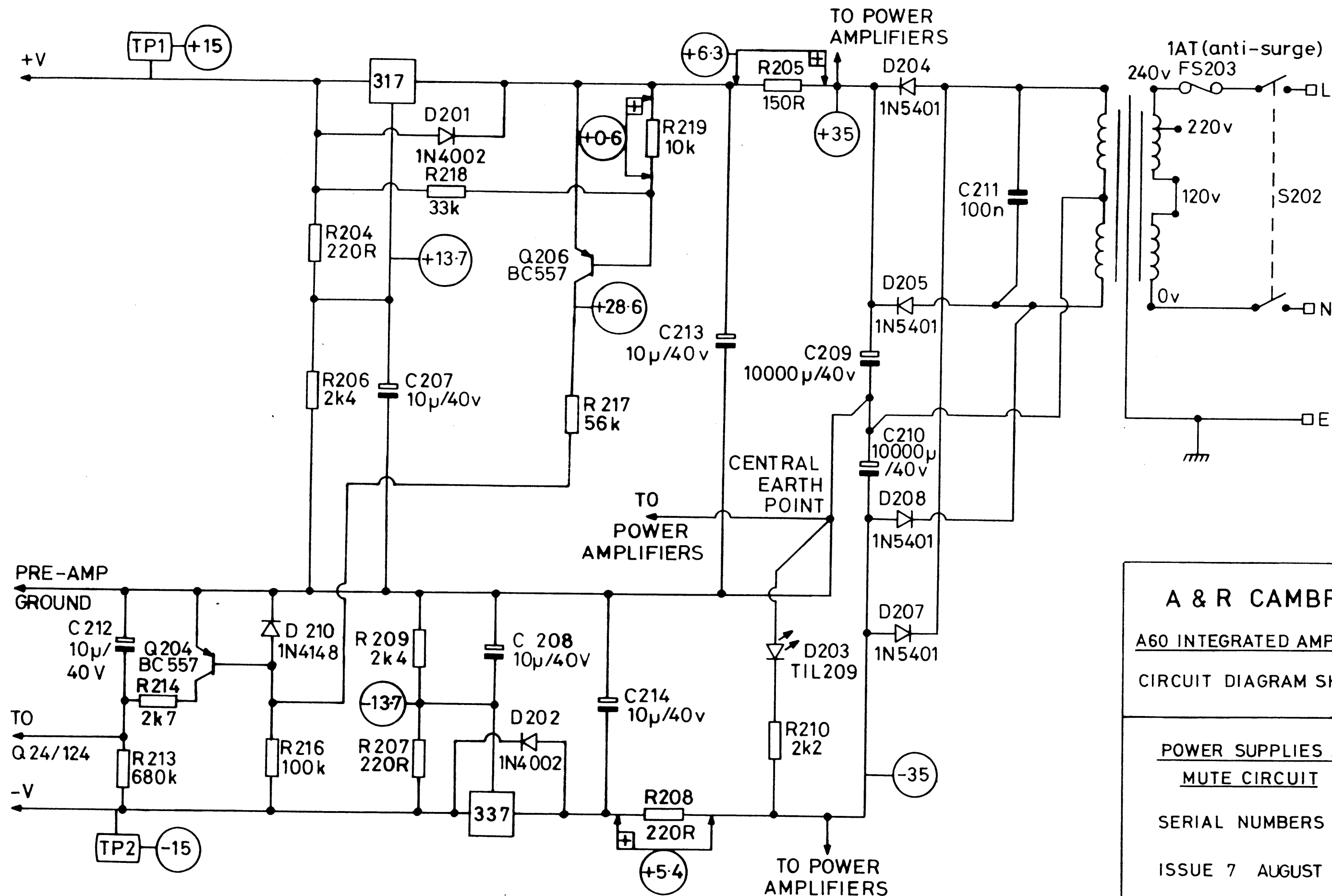


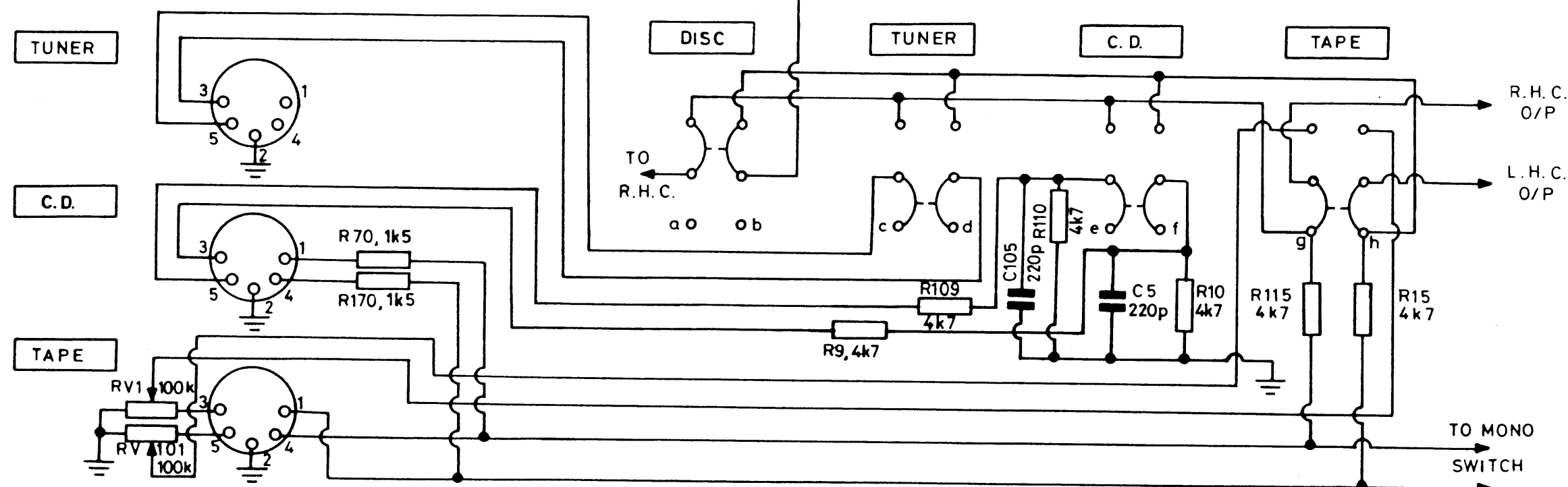
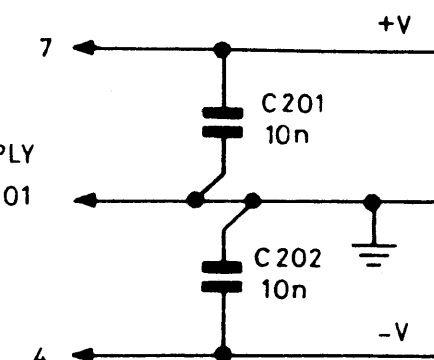
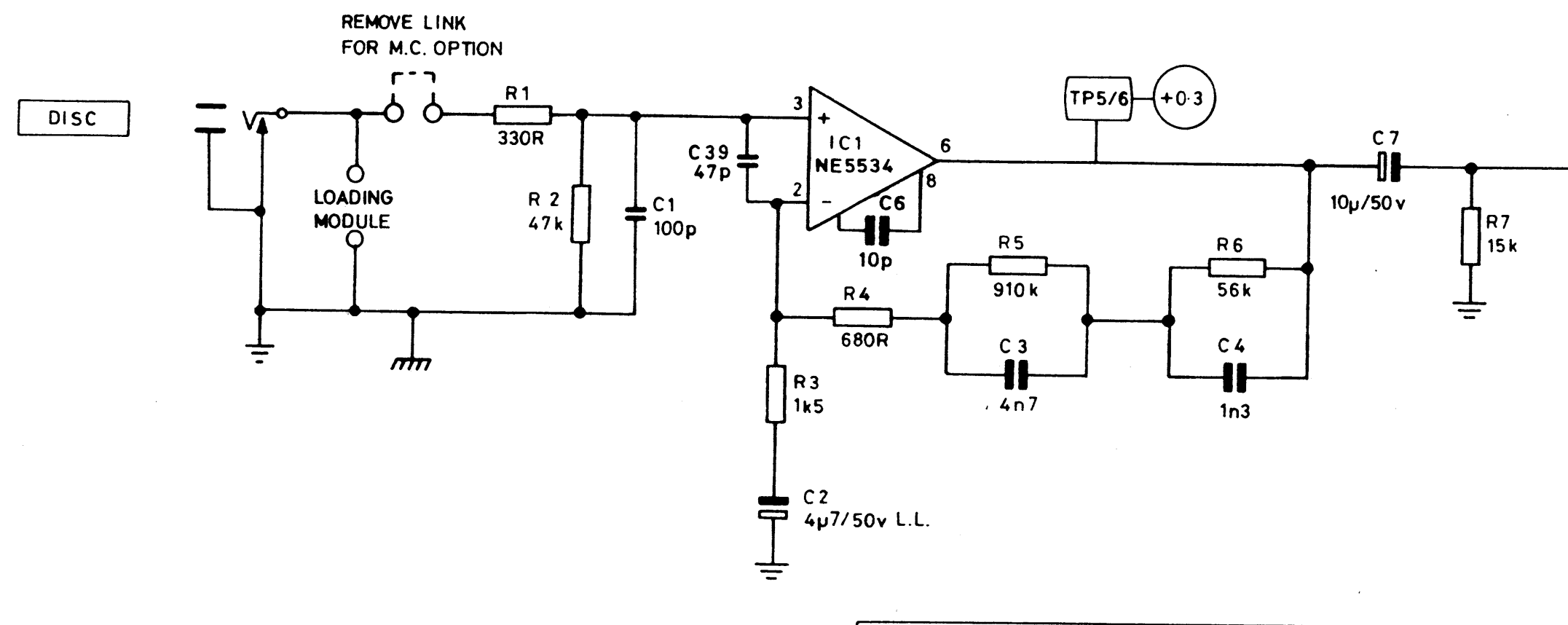
A & R CAMBRIDGE

A60 INTEGRATED AMPLIFIER
CIRCUIT DIAGRAM SHEET 3

POWER AMPLIFIER

SERIAL NUMBERS 20 000 -
25501
ISSUE 6 AUGUST 1983





A & R CAMBRIDGE

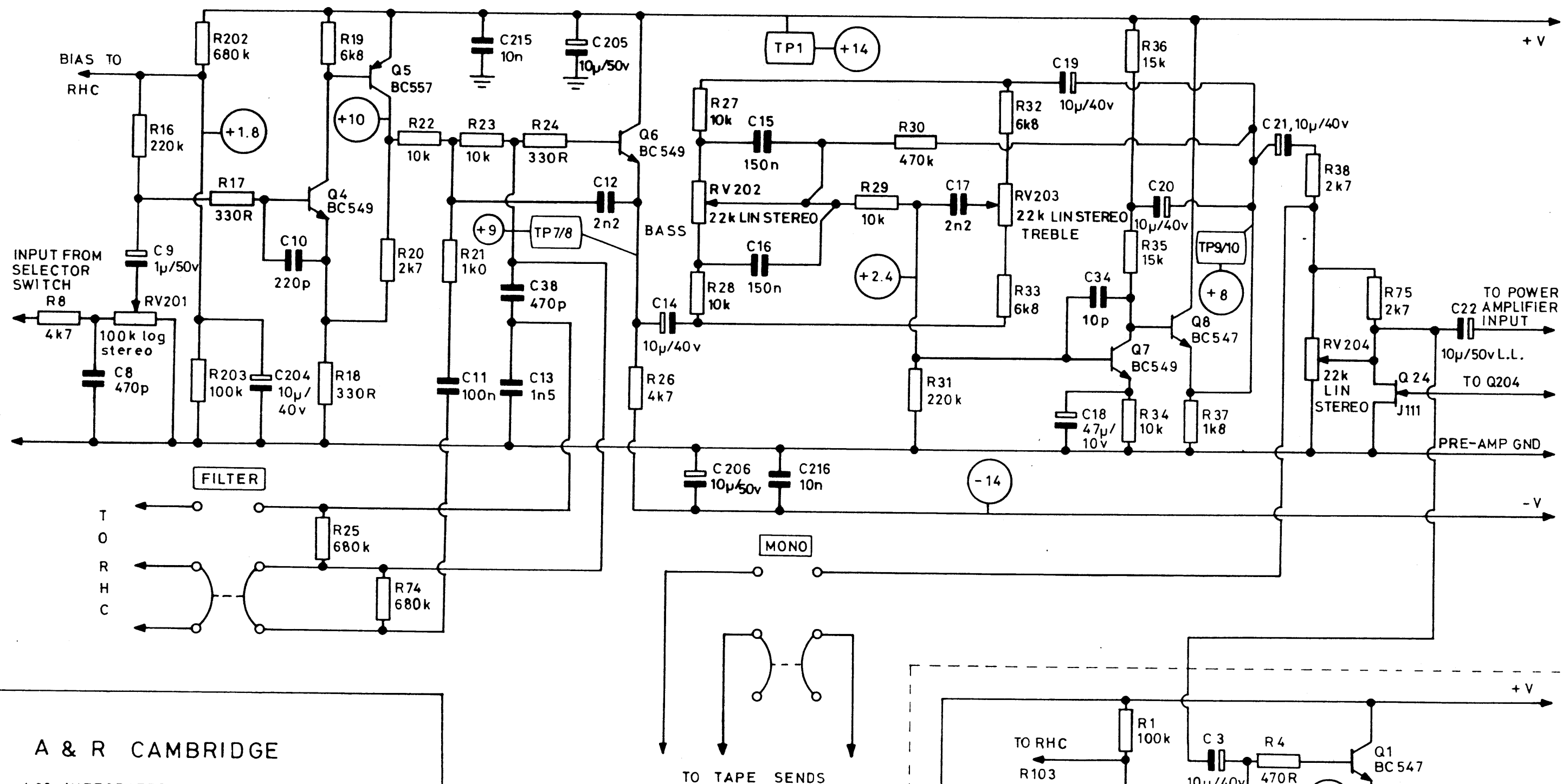
A60 INTEGRATED AMPLIFIER

CIRCUIT DIAGRAM SHEET 1

DISC INPUT AND SELECTOR
SWITCH

SERIAL NUMBERS 25502-

ISSUE 8 NOVEMBER 1985



A & R CAMBRIDGE

A60 INTEGRATED AMPLIFIER

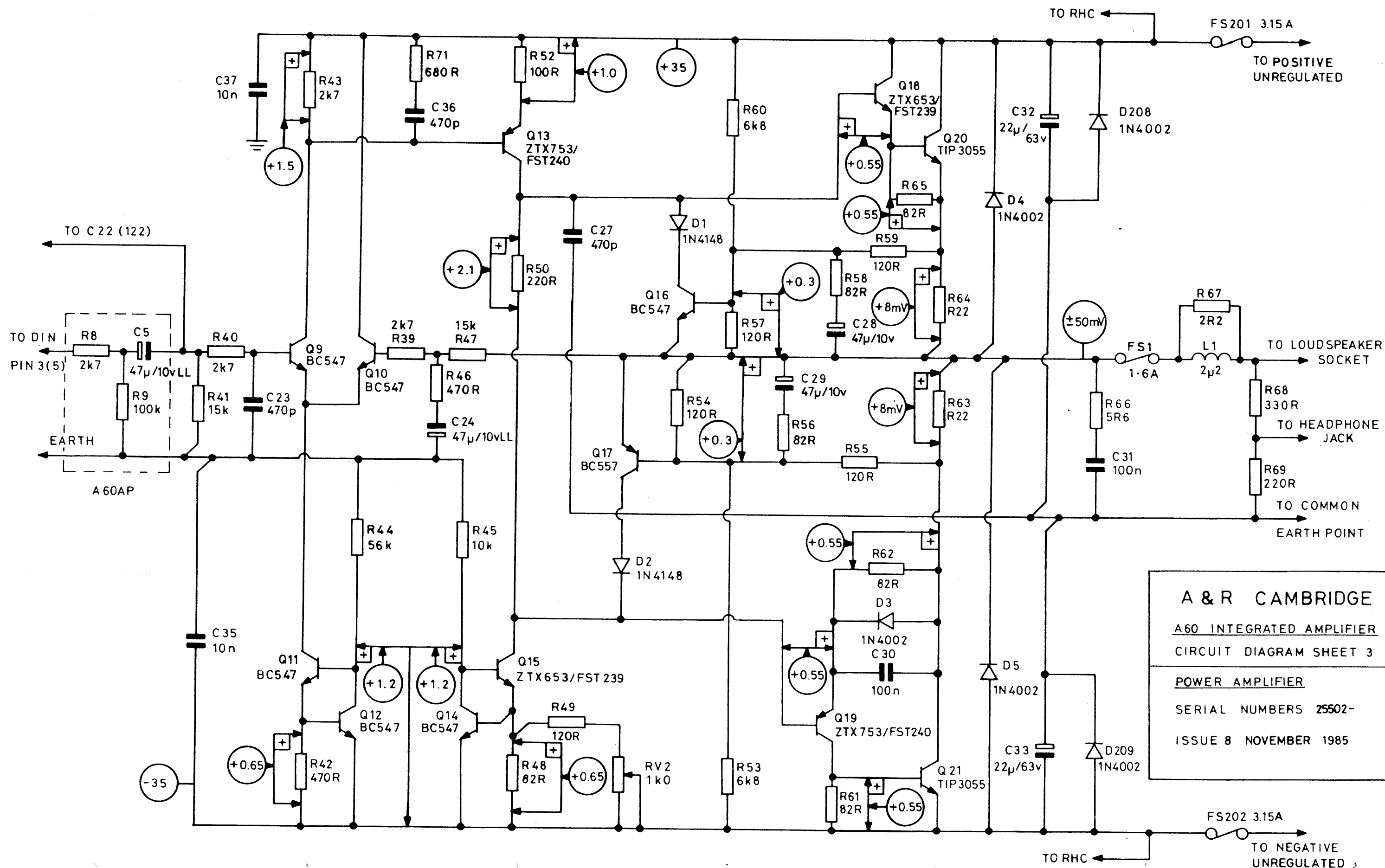
CIRCUIT DIAGRAM SHEET 2

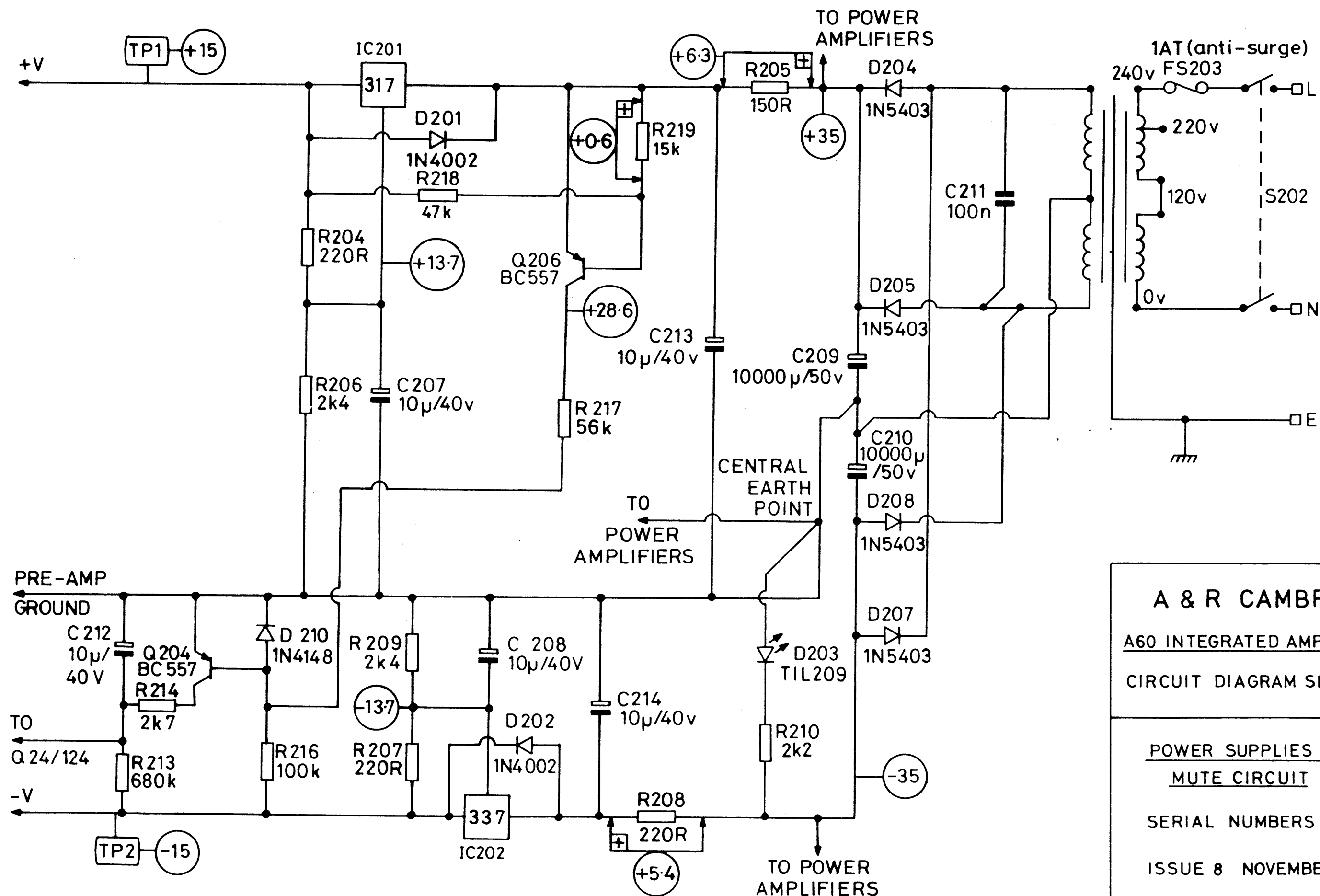
PREAMPLIFIER AND TONE CONTROL

SERIAL NUMBERS 25502 -

ISSUE 8 NOVEMBER 1985

A60AP





A & R CAMBRIDGE
A60 INTEGRATED AMPLIFIER
CIRCUIT DIAGRAM SHEET 4

POWER SUPPLIES AND
MUTE CIRCUIT

SERIAL NUMBERS 25502-

ISSUE 8 NOVEMBER 1985