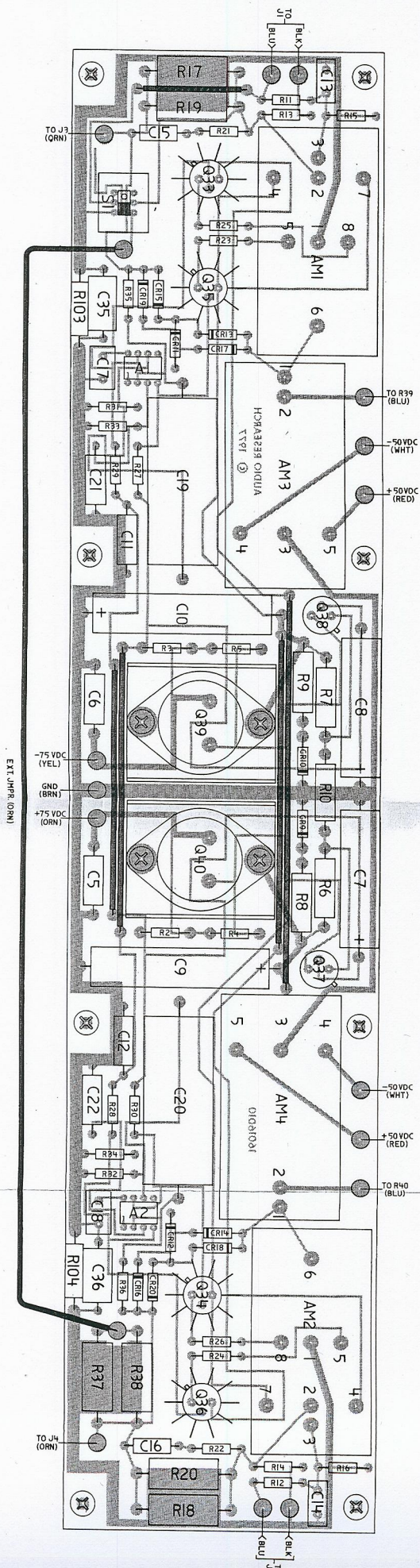
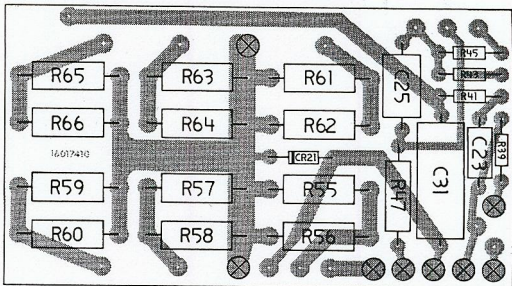


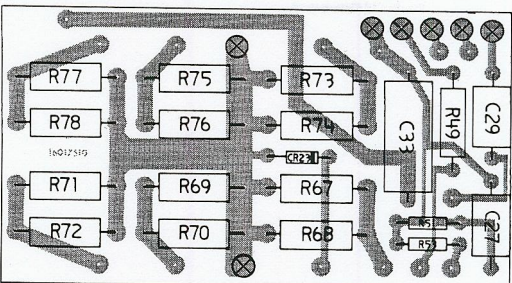
# 16016010 MOTHERBOARD (COMPONENT SIDE)



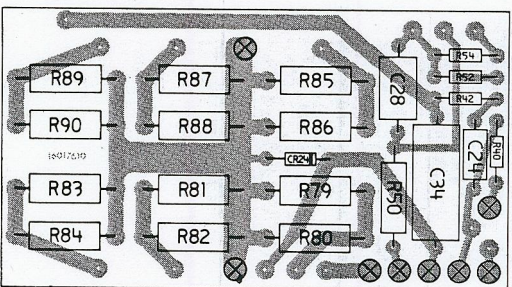
MOUNTED ON HEAT SINK ASSEM.



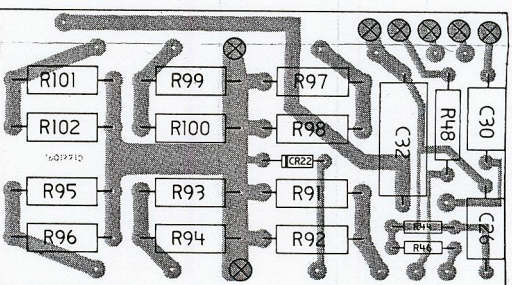
PWB 16017410



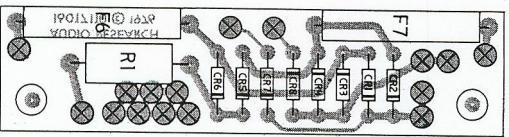
PWB 16017510



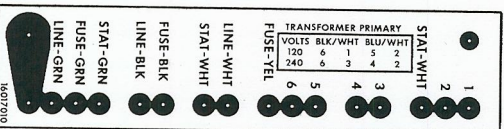
PWB 16017610



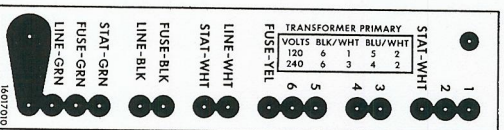
PWB 16017710



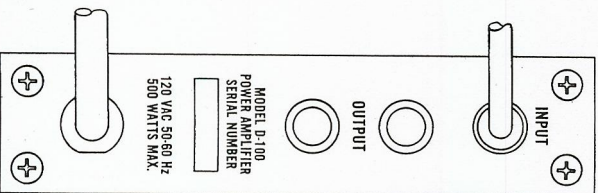
PWB 16017110



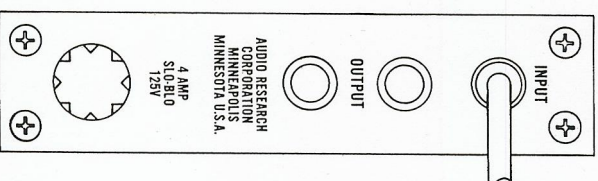
120 VAC POWER  
SUPPLY WIRING



240 VAC POWER  
SUPPLY WIRING

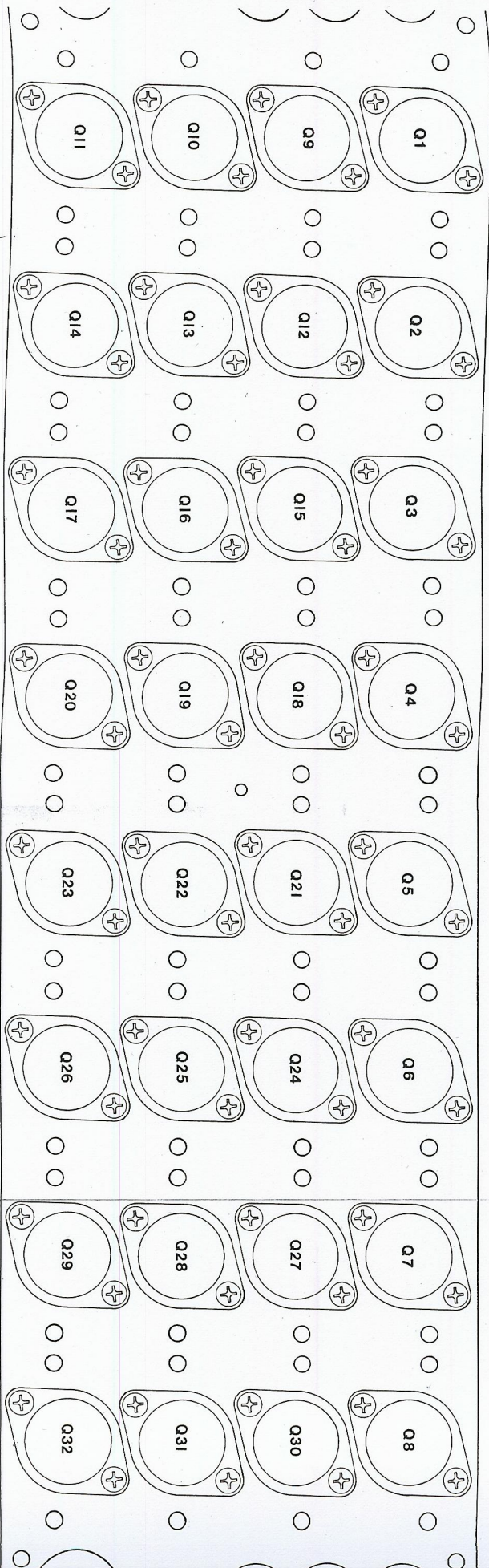


REAR  
PANELS



POWER SUPPLY CHASSIS PRINTED WIRING BOARDS

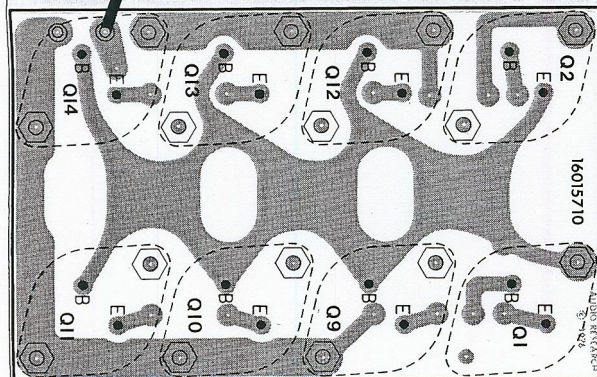
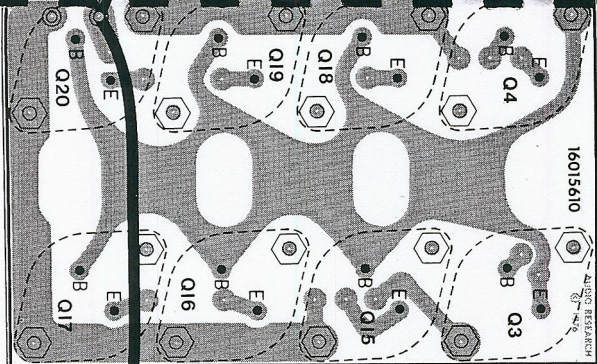
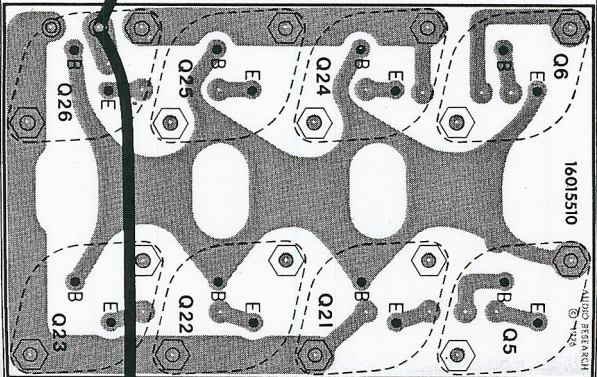
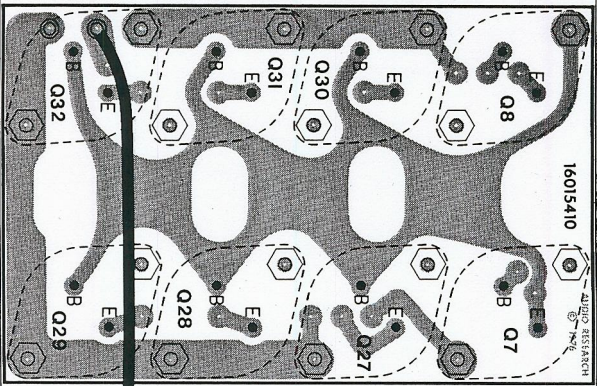
# HEAT SINK ASSEMBLY (TRANSISTOR MOUNTING SIDE)

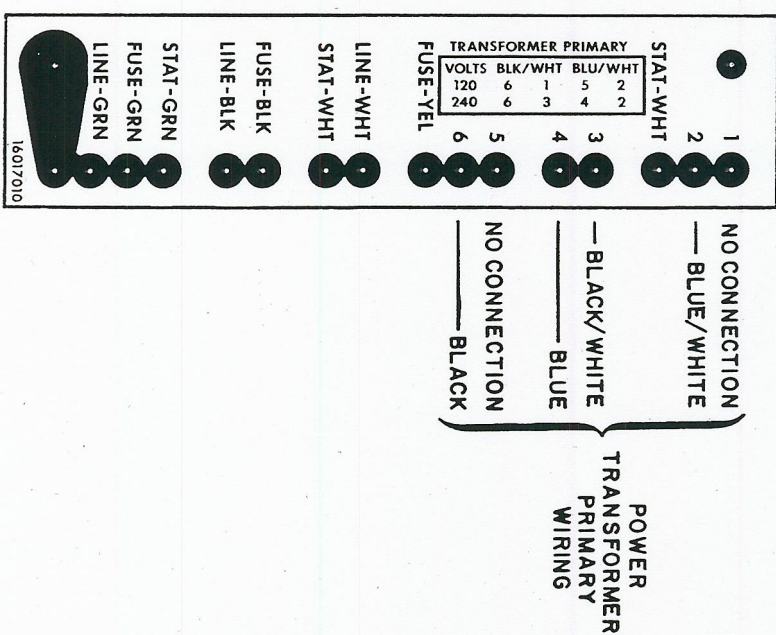
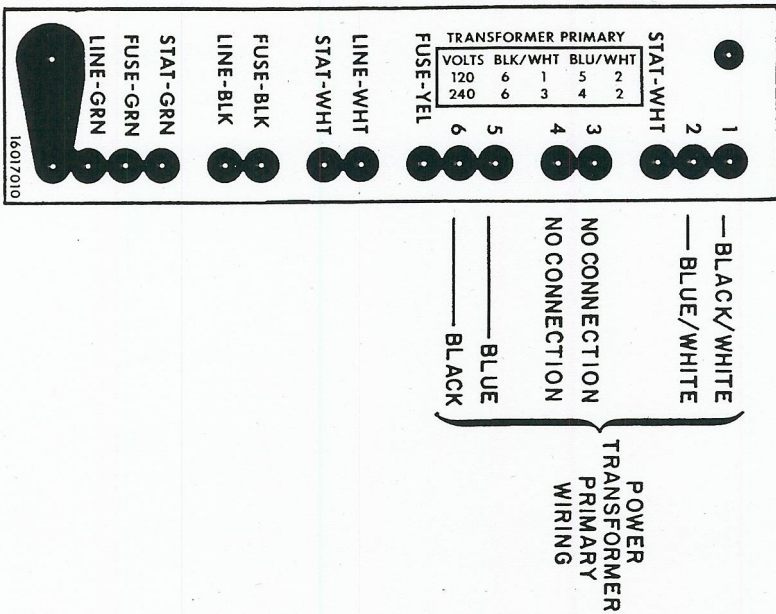


## NOTES:

1. All devices mounted on Chromerics 60-11-4511-1666.
2. All 6-32 mounting screws tightened to 6 in.-lbs. torque.
3. Q1,2,7,8 are Audio Research P/N 30002400. } Matched Set
4. Q3,4,5,6 are Audio Research P/N 30002500. }
5. Q9-14,27-32 are Audio Research P/N 30002700. }
6. Q15-20,21-26 are Audio Research P/N 30002600. } Matched Set

HEAT SINK ASSEMBLY (BOARD SIDE)





# LINE VOLTAGE CONVERSION