

APPLICATION NOTE 907

R-C Snubbing for the Lab

As the efficiency of power supplies goes up, circuit resistances tend to go down. This can create high-frequency circuits with the potential to generate large voltage overshoots and long decay times. It can cause over-voltage stress in the semiconductors, which limits circuit efficiency and reliability.

Snubbing these high-frequency circuits with a simple resistor-capacitor network provides damping, which minimizes ringing and over-voltage stress.

The basic circuit illustrated in **Figure 1** serves as a useful model. L1 and C1 form a resonant circuit that is damped by RL. In an actual application it is difficult to use the RL for damping, because it is either physically too large or too far away to operate as a real resistive load at the ringing frequency, which is usually in the MHz range.

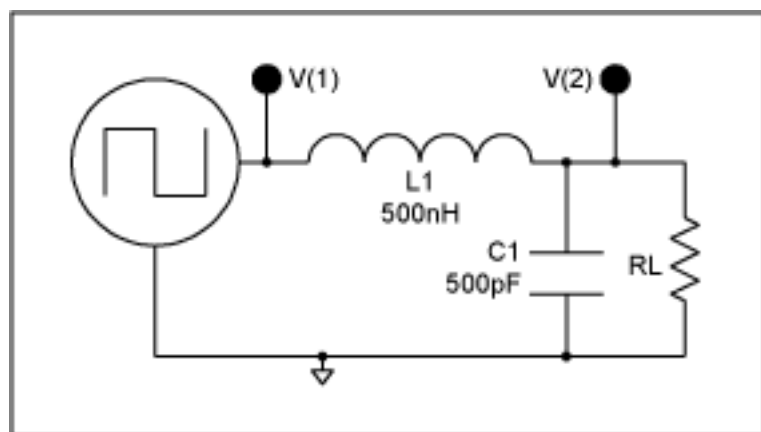


Figure 1.

When the circuit in Figure 1 is stimulated with a square wave of 10V peak at V(1), the output at V(2) rings. In this circuit the component stresses are almost doubled. A 10V stimulus results in a 19V response. The plot in **Figure 2** shows V(1) (top trace) and V(2) (bottom trace). At this 10MHz ringing frequency it can be difficult to predict how individual circuit components will behave.

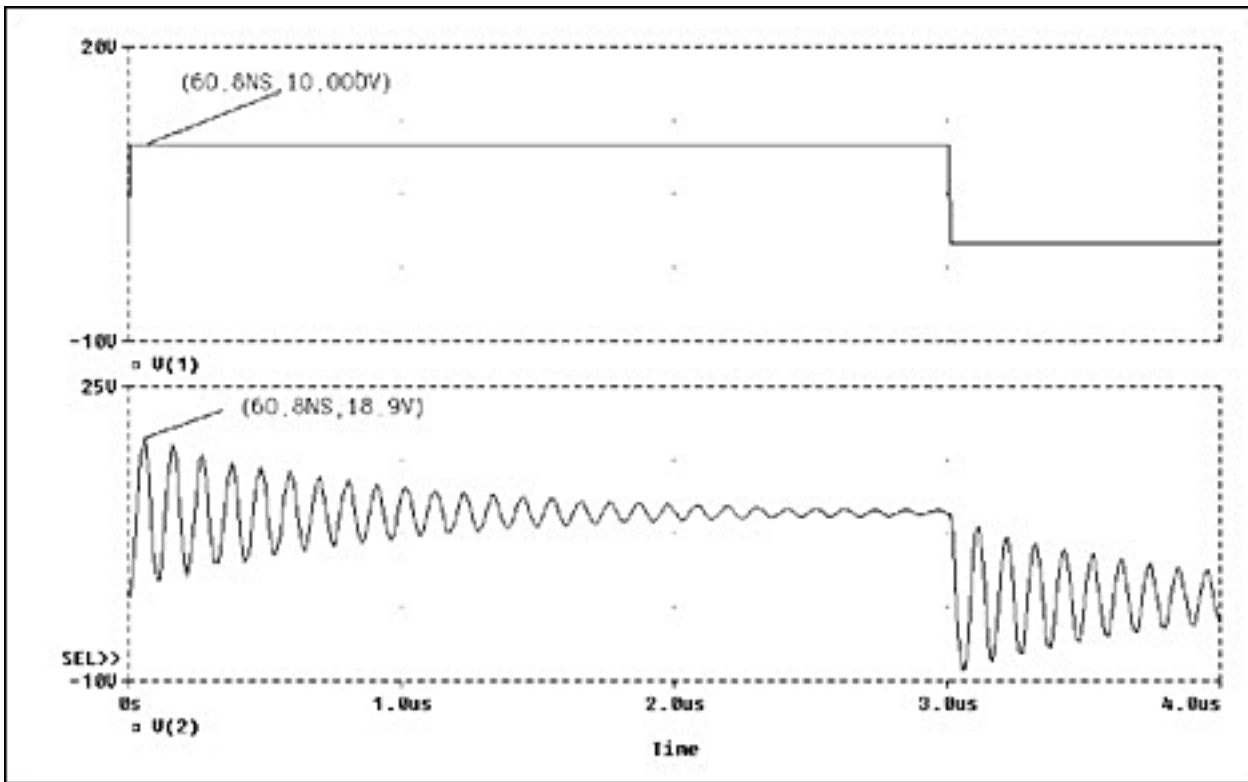


Figure 2.

A very simple method to determine the optimum snubber for a given circuit is to find the components of the L-C resonant tank. If the actual tank circuit is not known, try adding a capacitor across suspected nodes until a change of the ringing frequency is observed. If all of the probable nodes have been exhausted in the circuit, try moving a piece of ferrite close to the board. When the highly permeable ferrite interacts with the current loop in the tank, its components can be identified by observing a reduction in frequency. Once the tank capacitor is found, add capacitance across it until the ringing frequency is cut in half. The ringing frequency is cut in half by squaring the total capacitance value, then adding a series resistance to the capacitor until an acceptable damping is reached. This snubber circuit is formed by RS and CS and shown in **Figure 3**.

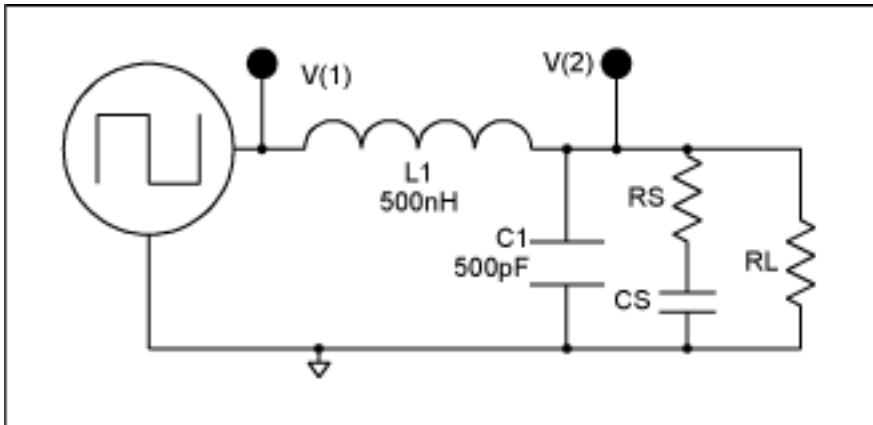


Figure 3.

By knowing how much capacitance is needed to halve the frequency, it is easy to determine the circuit inductance using the formula

$$F = \frac{1}{2 \cdot \pi \cdot \sqrt{L1 \cdot C1}}$$

where C1 and F are the circuit's original circuit capacitance and ringing frequency. Because it takes C1 plus 3 added C1's to halve the frequency, the circuit's original capacitance is calculated by dividing the added capacitance by three. The optimum resistor to damp the overshoot is twice the inductive impedance at the new resonant frequency. As an example, if a circuit exhibits a 100ns ring and adding a 1500pf capacitor reduces the period to 200ns, the calculated values for C1 and L2 are 500pF and 500nH, respectively. The inductive impedance is then

$$Z = 2 \cdot \Pi \cdot F \cdot L1.$$

Because the new frequency is 5MHz and L1 is 500nH, it follows that Z equals 15.7 Ω . To find the optimum resistor, multiply this inductive impedance by two: for this circuit, 32 Ω . The resulting overshoot and decay is greatly reduced, as shown in the plots in **Figure 4**.

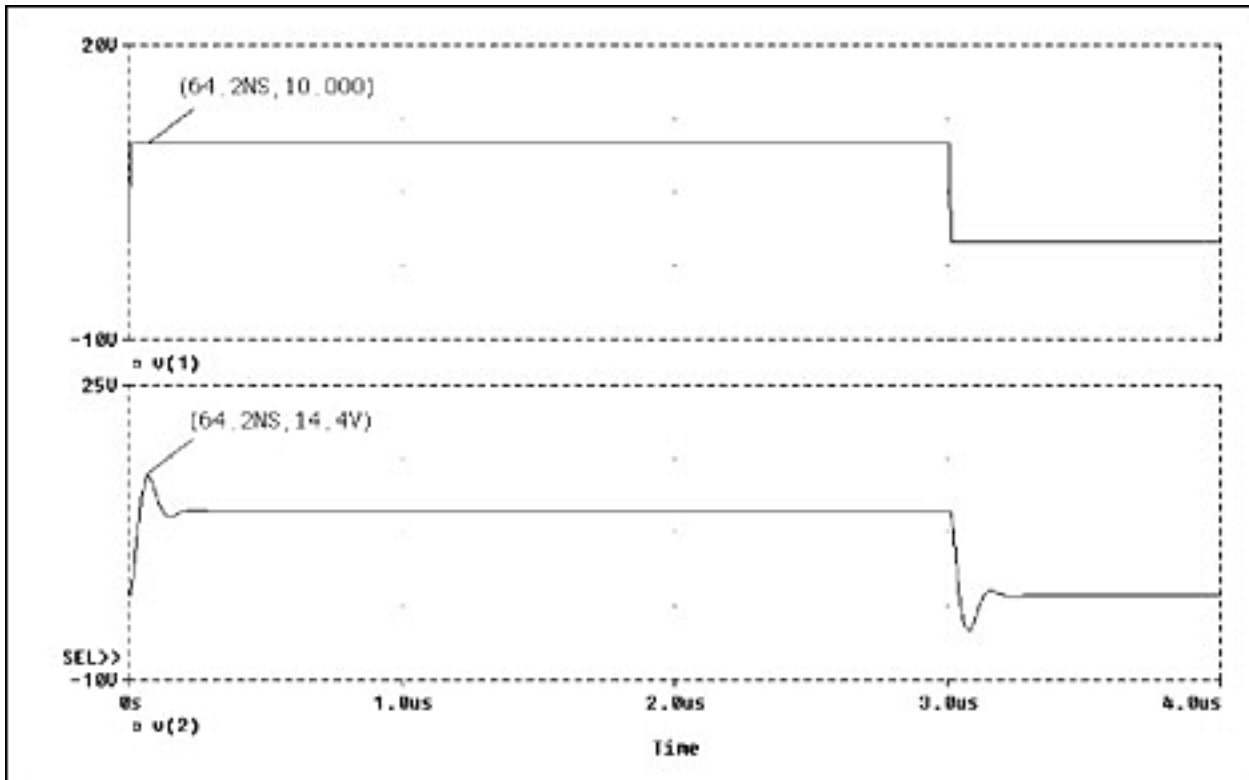


Figure 4.

The power dissipated in the resistor, RS, can be roughly calculated by assuming that the energy stored in the added capacitor is lost in the resistor on each transition, or

$$P = (CS \cdot Vpk^2 / 2) \cdot Ft \cdot 2$$

where P is the power dissipated in the resistor in watts, CS is the added capacitance, Vpk is the peak capacitor voltage, and Ft is the switching frequency (two transitions per cycle). In this circuit at 100kHz, RS dissipates approximately 31mW. This is only an approximation to size the resistor and its impact on the circuit. For a more accurate calculation for power dissipation, the true RMS current through the resistor, RS, must be known.

If further reduction in ringing voltage is desired, add capacitance to the tank until a three-fold reduction in ringing frequency is obtained. This reduction will be at the expense of power loss because the circuit needs to drive 9 times more capacitance. For the example above, a value of 4000pF or eight times CS would need to be added to reduce the ringing frequency to 3.33MHz (300ns). The added capacitance divided by eight gives the

circuit capacitance, C1, and the inductive impedance is 10.5Ω . Again, to find the RS, the inductive reactance must be multiplied by two. For this circuit 21Ω is the optimum value for RS and it dissipates approximately 63mW. The plot in **Figure 5** shows the response of the circuit in Figure 3 with these values.

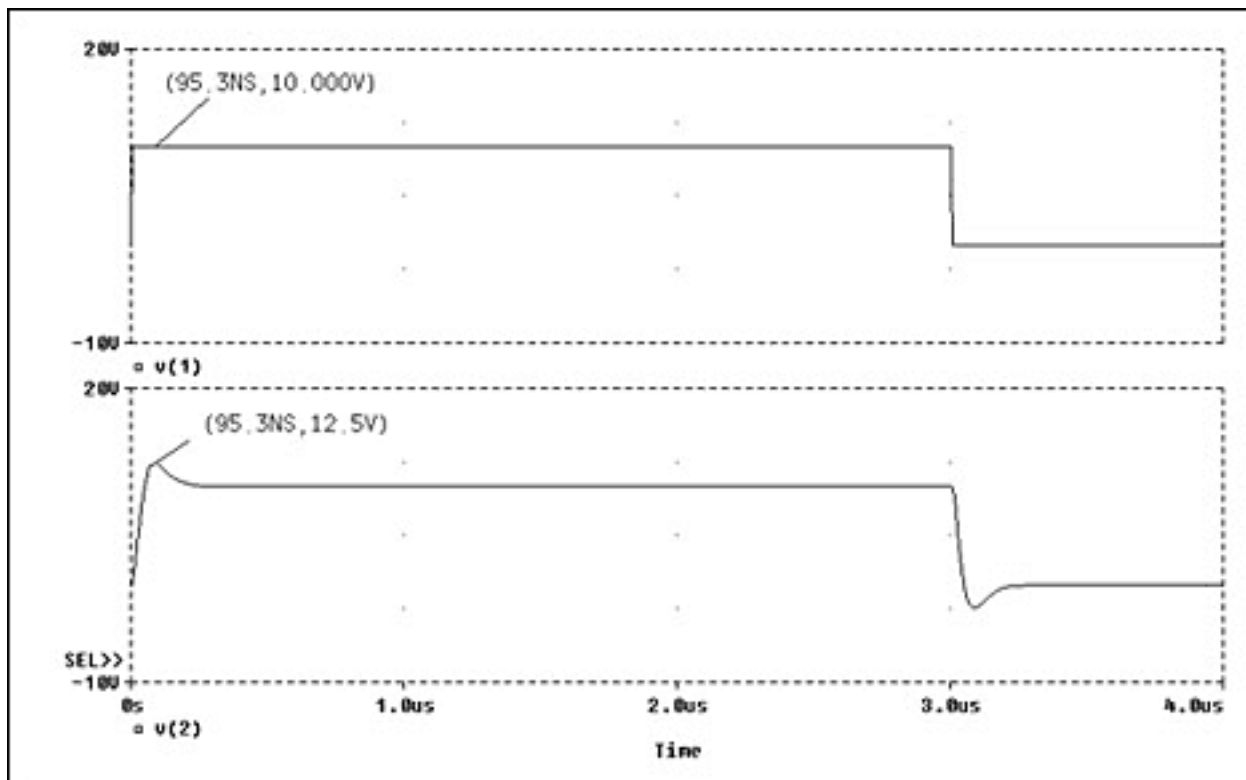


Figure 5.

Although snubbing is lossy it can improve efficiency and reliability. With less ringing, lower voltage parts can be used and the excessive losses due to avalanche effects in semiconductors can be avoided. Circuit noise is also reduced. This method can quickly solve problems in the lab when time for circuit measurement and analysis are not available to the engineer.

Application Note 907: <http://www.maxim-ic.com/an907>

More Information

For technical questions and support: <http://www.maxim-ic.com/support>

For samples: <http://www.maxim-ic.com/samples>

Other questions and comments: <http://www.maxim-ic.com/contact>

Related Parts

MAX668: [QuickView](#) -- [Full \(PDF\) Data Sheet](#) -- [Free Samples](#)

AN907, AN 907, APP907, Appnote907, Appnote 907

Copyright © 2005 by Maxim Integrated Products

Additional legal notices: <http://www.maxim-ic.com/legal>