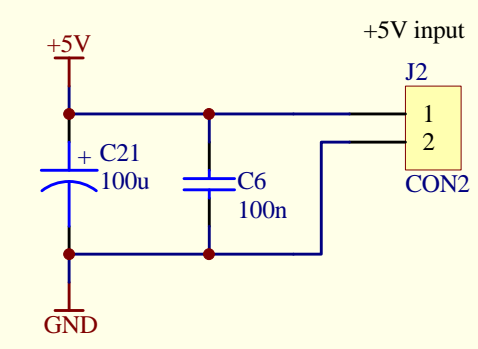
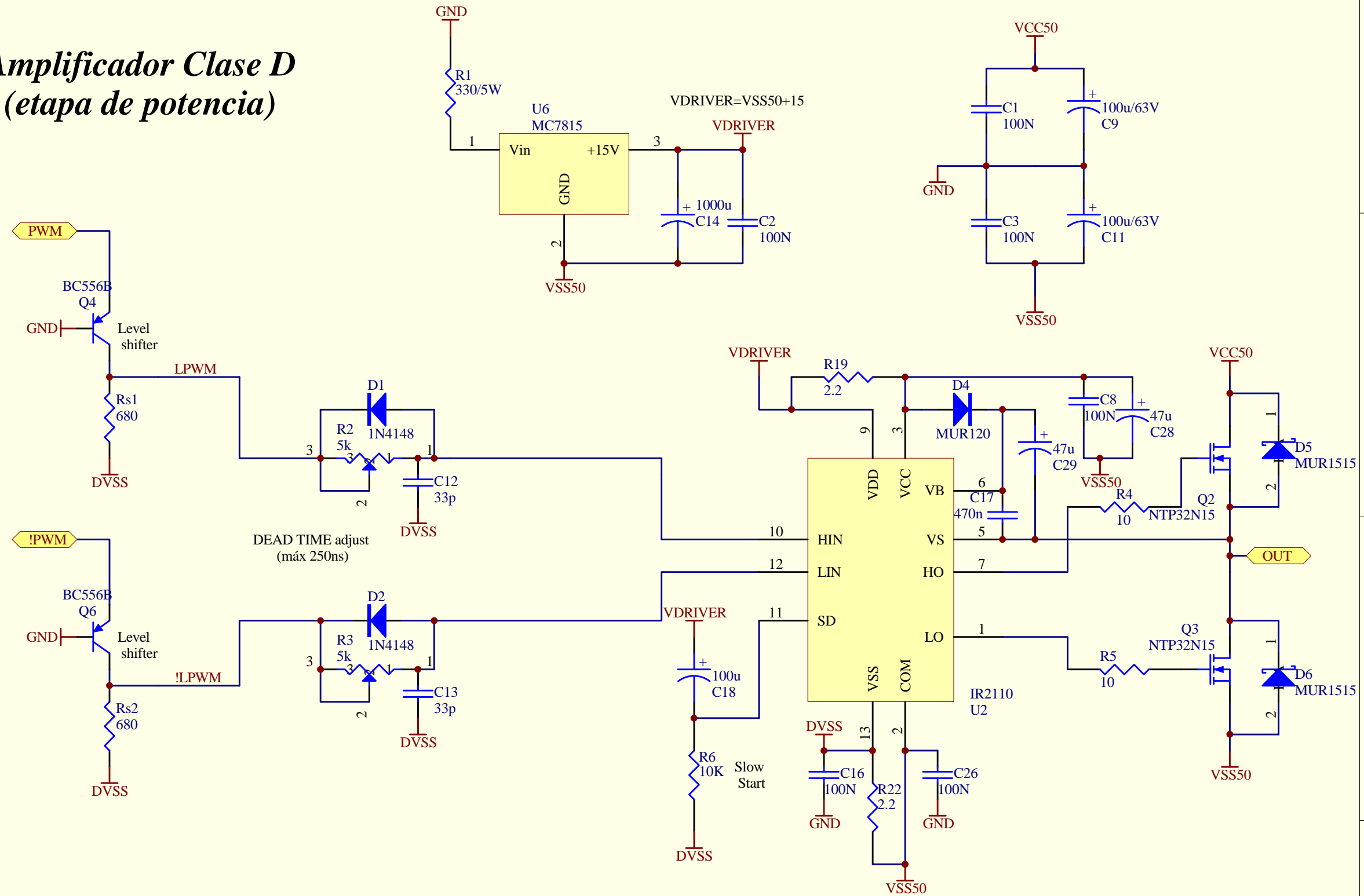


**Amplificador Clase D
(modulador)**



Title		
Size	Number	Revision
A		
Date:	8-Oct-2003	Sheet of
File:	D:\circuitos\amplif clase_d\etapa_potencia	max4295.dwg

Amplificador Clase D (etapa de potencia)



Title		
Size	Number	Revision
A		
Date:	8-Oct-2003	Sheet of
File:	D:\circuitos\amplif clase_d\etapa_potencia	42952db

D

C

B

A

D

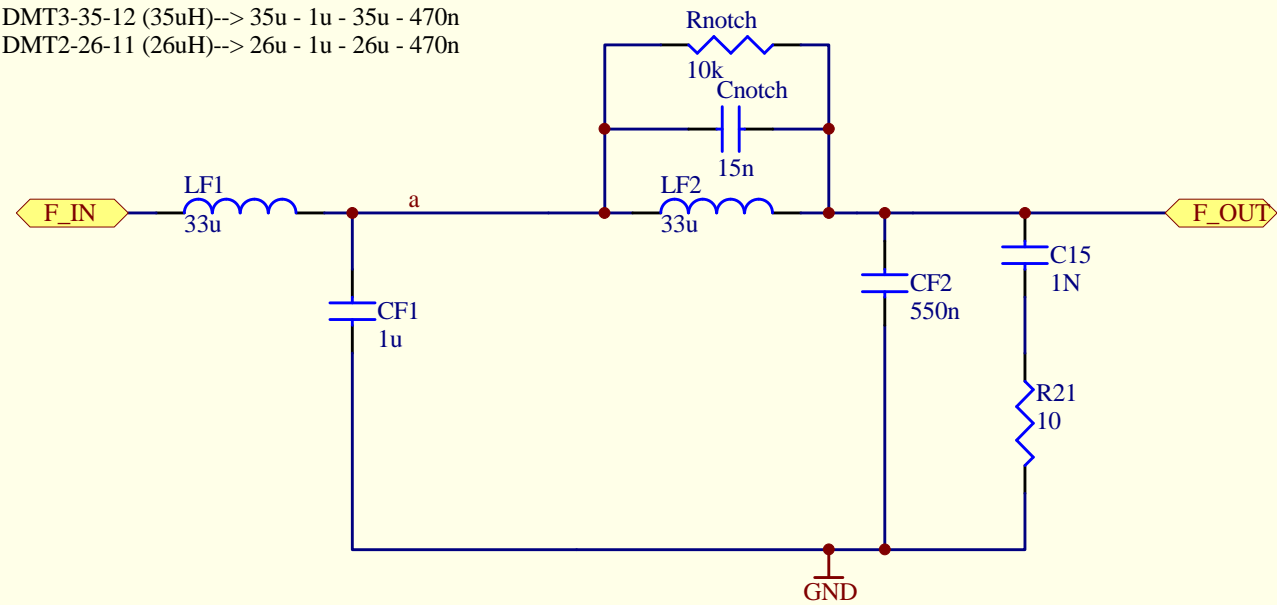
C

B

A

Amplificador Clase D
(filtro de salida)

Bobinas:
Coilcraft:
DMT3-35-12 (35uH)--> 35u - 1u - 35u - 470n
DMT2-26-11 (26uH)--> 26u - 1u - 26u - 470n



Title		
Size	Number	Revision
A		
Date:	8-Oct-2003	Sheet of
File:	D:\circuitos\amplif clase_d\etapa_potencia	42982db