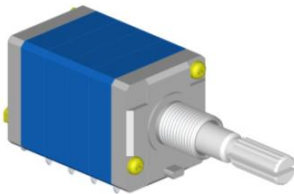




**SONG HUEI ELECTRIC CO.,LTD**

## 21mm Metal Shaft Rotary Potentiometer

**RK2142G**



**Part Number**

**RK2142G – B 10K, L- 20 KC**

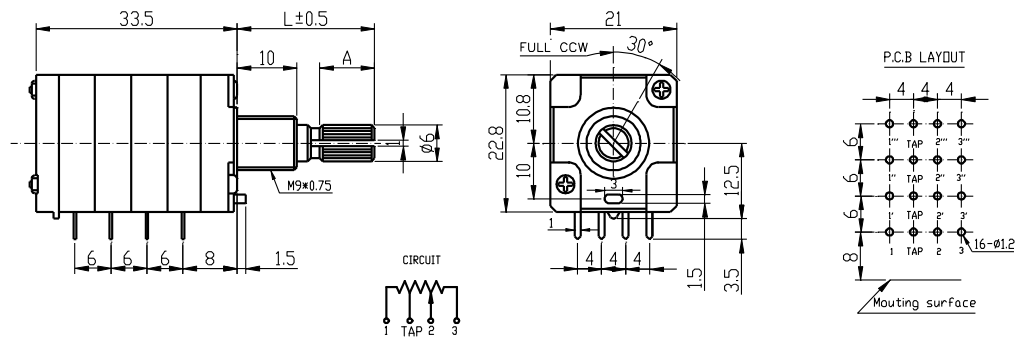
Taper

Shaft Length

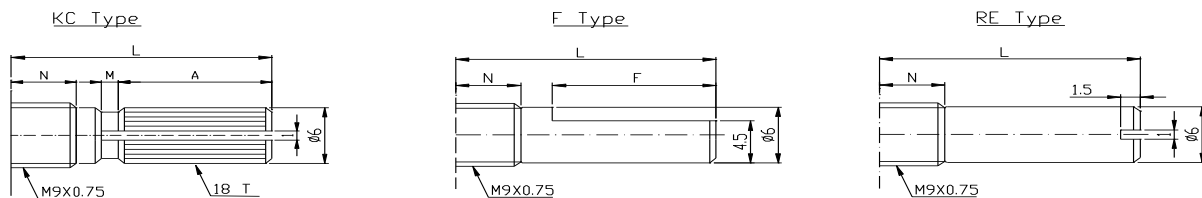
Resistance value

Shaft Type

### Dimensions



### Shaft Type



N=10mm				
Shaft Type	L	20	25	30
KC	A	7	10	12
	M	1	2	4
F	F	7	12	12
RE	L	20	25	30

**21mm Metal Shaft Rotary Potentiometer****General**

Operating temperature	-10 °C ~ +70 °C
Manual soldering	300 °C Max 3sec

**Electrical Characteristics**

Total resistance	10K~1M $\Omega$
Resistance tolerance	$\pm 20\%$ (more than 1M $\Omega$ $\pm 30\%$ )
Resistance taper	A B
Sliding noise	Less than 100 mV
Residual resistance	$\leq 20 \Omega$ Max
Insulation resistance	More than 100 M $\Omega$ at DC 500 V
Rated power(W)	0.05 W
Max. Operating voltage	AC 150 V / DC 20 V
Withstand voltage	1 Minute at AC 500 V
Gang Error	0~ 40dB $\leq$ 3dB

**Mechanical Characteristics**

Total rotational angle	300 ° $\pm 5$ °
Rotational torque	30~250 gf.cm
Rotational stopper strength	7 Kgf.cm Min.
Shaft push-pull strength	8 Kgf. Max.
Rotational life	15,000 Cycles