

Recompiled by: Scott Leventhal (thanks to Thomas Chao)

M	Mouser
---	--------

Notes:

1. All resistors are 1%, 1/4W Dale or Xicon Metal Film resistor.

2. PSU resistor are 1%, 1/2W, unless specified.

Main Board

Main Board					
Part Description		Value	Qty/PCB	Part #	Vendor
R2, R10		3.3K	2	71-RN60D-F-3.32k	M
R1, R9, R26, R27, R28, R30		10K	6	71-RN60D-F-10K	M
R6, R13, R19, R20, R21, R22, R31, R32, R33, R34		221	10	71-RN60D-F-221	M
R8, R16, R23, R24		100	4	71-RN60D-F-100	M
R17, R18 (0.5 watt min)		33.1	2	71-PL20S-G-33	M
R3, R11		22.1k	2	71-RN60D-F-22.1k	M
R7, R15, R25, R29		4.75k	4	71-RN60D-F-4.75k	M
R35, R36 (0.5 watt min)		22.1	2	71-RN60D-F-22.1	M
R4, R5, R12, R14		221k	4	71-RN60D-F-221k	M
P1		2K	1	72-T93YA-2K	M
C1, C2 (look for BlackGate N series instead)		10uF/50V	2	4-10810	
C8, C12 (BlackGate Series N in lieu of C7, C9, C11, C13)		47uF/50V	2		
C3, C4, C10, C14 (silver mica or Wima MKP-27)		680pF	4	23P5168	M
C5, C6 (1000 uF 100V7) (silver mica, MKP, Pana TSHA?)		1200uF/100V	2		
D1, D2, D3, D4		9.1V zener	4	78-1N4738A	M
T4, T6 (ZTX450 in schematic)		ZTX451	2	522-ZTX451	M
T5, T7 (ZTX550 in schematic)		ZTX551	2	522-ZTX551	M
T1, T2, T8, T9		IRF610	4	512-IRF610B	M
T3, T10		IRF9610	2	512-SFP9610	M
Heat Sink for O packs (T1, T2, T3, T8, T9, T10)		Heat sink	6		

Power Supply

Power Supply		Value	Q'ty	Part #	Vendor
C1a, C1b, C3, C4 (1000uF/100V Panasonic?)	1200uF/100V	4	140-L8102M2A-2230	m	
C2	100nF	1	75-MKT1822410014	m	
R1 (2.21k in schematic)	2.2K	1	71-RM65D-F-2.21K	M	
R2	4.7K	1	71-RL20S-G-4.7k	M	
R3	221	1	71-RM65D-F-221	M	
R4, R5	3.3 / 3W	2	283-3.3-RC	M	
T1	IRF610	1	512-IRF610B	M	
D1, D2, D3, D4	BYW29	4	511-RYW98-200 (ventiv)	m	
D5	1N4001	1			
D6, D7, D8, D9, D10, D11, D12	9.1V	7	78-1N4738A	m	
Transformer	60V / 2.67A / 160 watts	1		m	
	60V / 3.75A / 225 watts			m	
SW1.1~SW1.4	2P DIP SW	2			
2 pin Terminal block		1			
Heat Sink for T1	Heat Sink	1			

Man'y Part

RN60D3321FB14

RN60D1002FB14

RN60D2210FB14

RL205330GB14

RN60D2212FB14

RN60D4751FB14

RN60D22R1FB14

RN60D2213FB14

T93YA202KT20

soniccraft.com, partsconnexion.com

soniccraft.com, partsconnexion.com

23PS168

1N4739A

ZTY450 (as in schematic)

ZTYF50 (as in schematic)

Tarasque

Tarasque

140-LS102M2A-2230 (verify)

MKT1822410014 (verify fit)

RN65D2211EB14

RL20S472GB14

RN65D2210FB14

283-3,3-RC

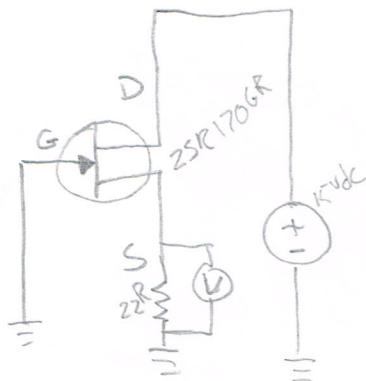
IRF610B FP001

BYW29-200 (verify part)

1N4739A (verify)

182M30

182E30


$$R_{35, 36} = 22.1 \quad RRBIR$$

R5, 4, 12, 14 = 221K RR Brn Orange

$$R_{11,3} = 22.1 \text{ K} \quad R R_{B_{IN}} R_d$$

五

D G S