

Passlabs - Aleph 4 : Layout View

RLED - 10K

R16 - 10K

R17 - 10K

R18 - 10K

R14 - 10K

R5 - 100K

R53 - 100K

R15 - 1K

R37 - 221

R38 - 221

R3 - 221

R36 - 221

R1 - 10K

R24 - 392

R22 - 221

R23 - 75

R25 - 4.75K

R27 - 1.5K

R26 - 121K

R28 - 1K

R29 - 619

R42,43,44,45,46,52 - 0.47 / 5W

R28,29,30 - 221

R52,53,54 - 221

R40,41,42 - 0.68 or 1.5 / 5W

R64,65,66 - 0.68 or 1.5 / 5W

C11 - 220 uF 10V Tantalum

C4 - 680 pF Silvered Mica

C7 - 103 Poly (? C1 on circuit)

C12 - 10 pF Silvered Mica

C8,9 - 220 uF 35V Rad Elect

Z1..5 - 9.1V Zener

Th1,2 - Power Thermistor

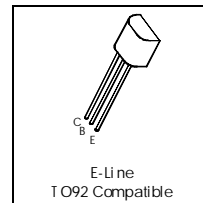
(Rhpoint SG200/170)

Q1A1,2,5 - IRF9610

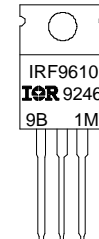
Q2,3 - ZTX450

Q6,7,8 (9,10,11) - IRFP244

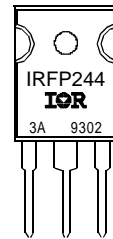
Q18,19,20 (21,22,23) - IRFP244



ZTX450

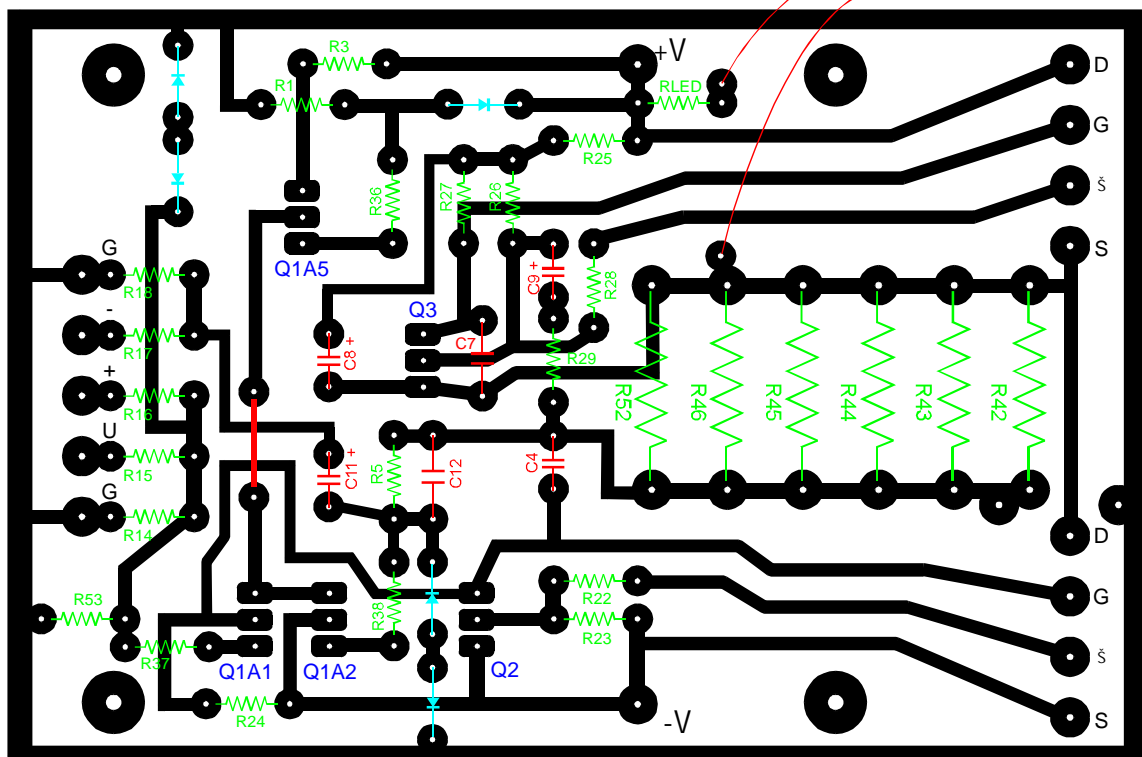


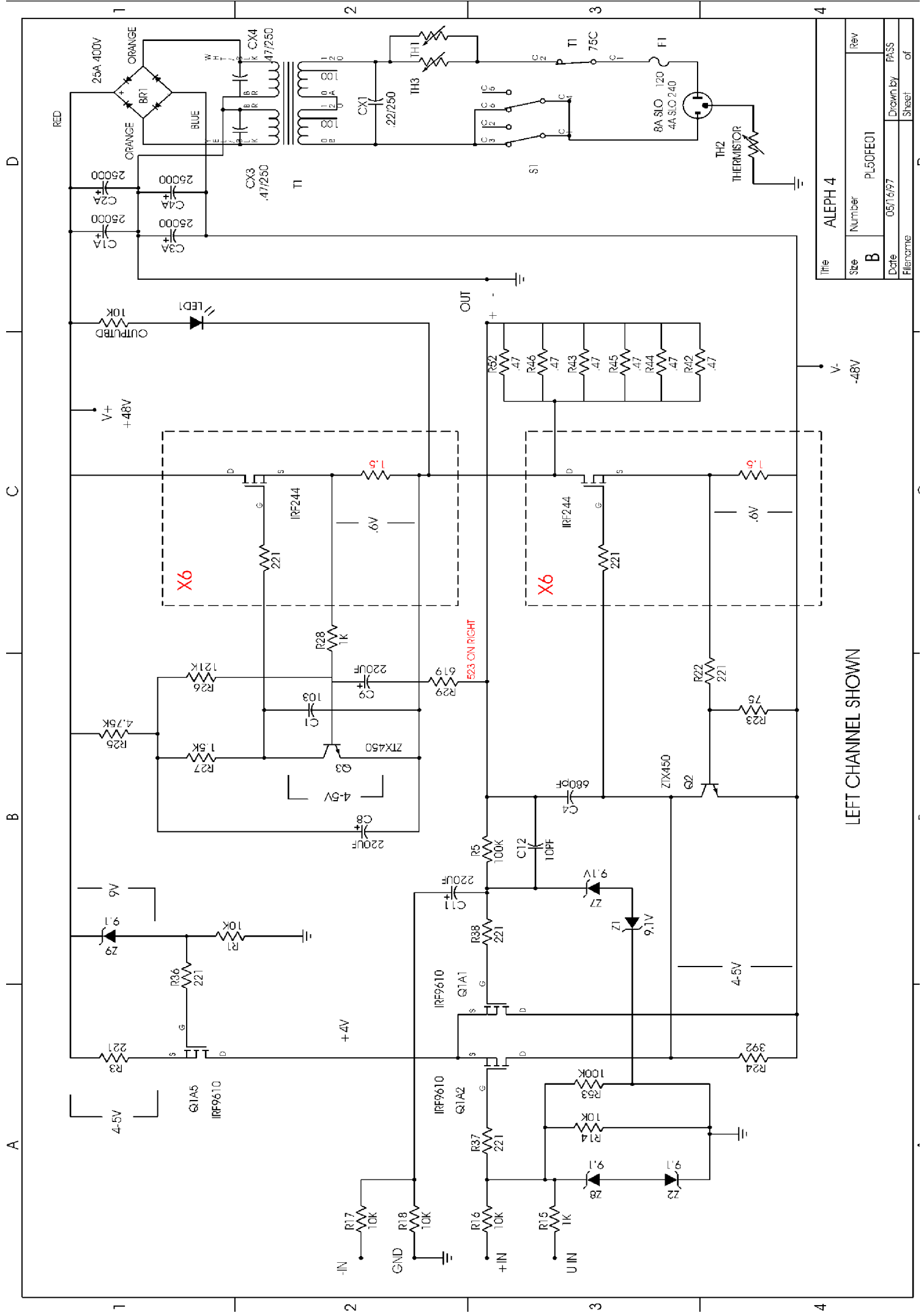
G D S



G D S

Layout - Component Side

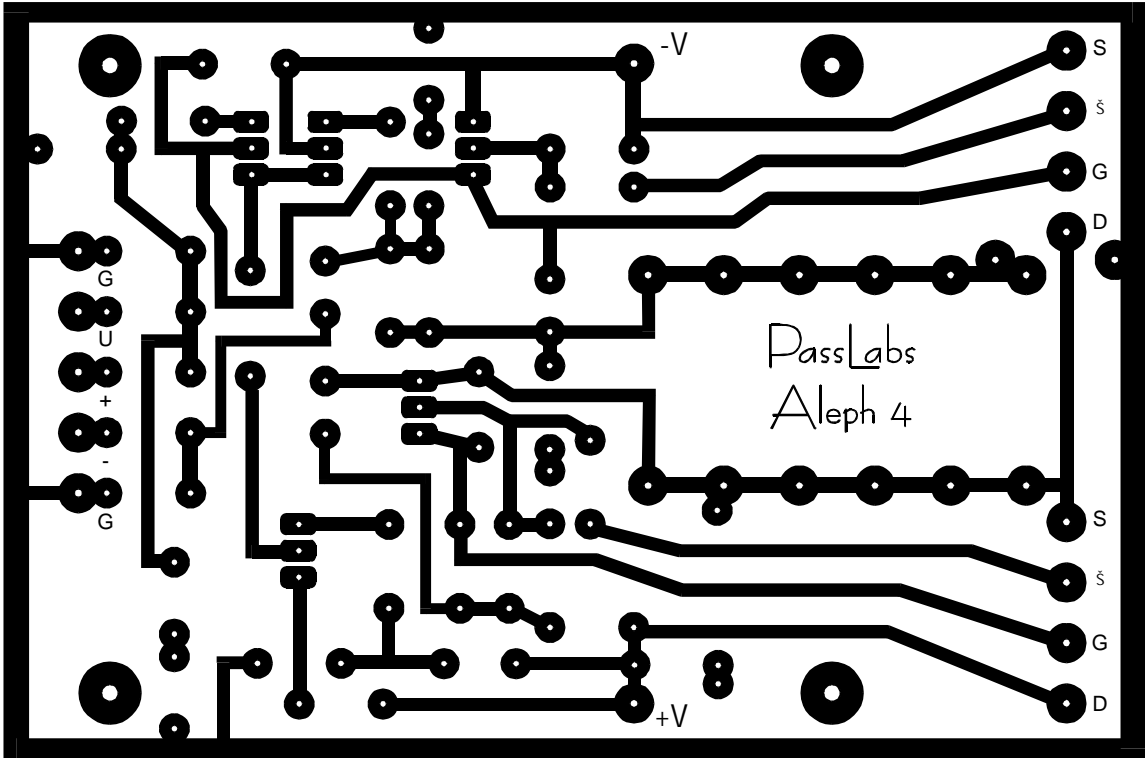


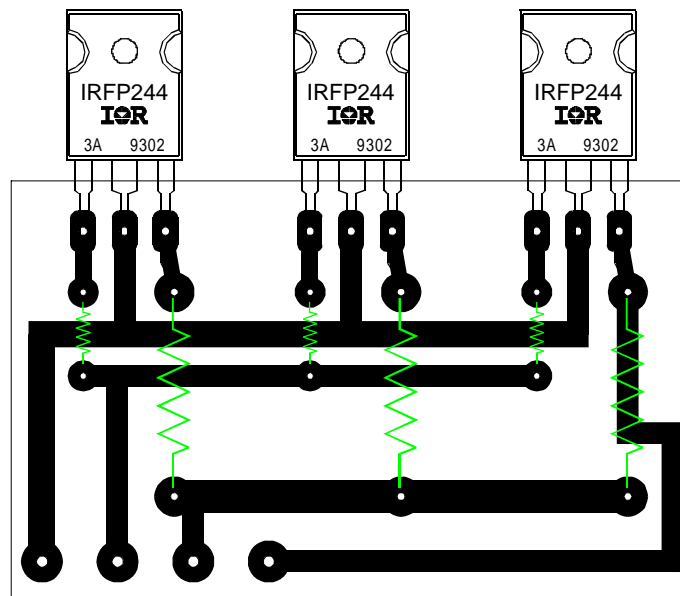


| | | | |
|----------|----------|----------|------|
| Title | | ALEPH 4 | |
| Size | Number | PL50FE01 | |
| B | | | |
| Date | 05/16/97 | Drawn by | PASS |
| Filename | | Sheet | of |

LEFT CHANNEL SHOWN

PC Board - Copper Side





FET Mounting Board - Component Side
Note - FETs mounted from copper side
(if using 6 FET PCB just double this - see next)

FET Mounting Boards 3/6 - Copper Side

