

Figures 4 and 5 plots the obtained sharpness and roughness.

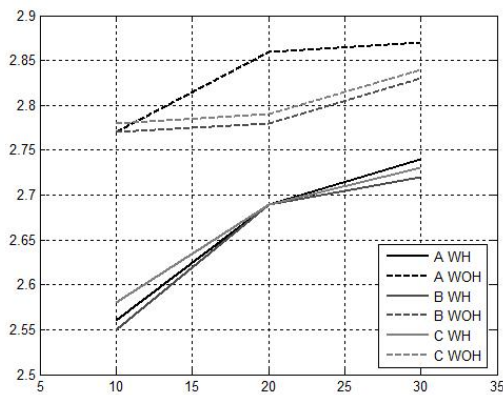


Figure 4 Sharpness vs input voltage obtained for the three devices with and without attached horn.

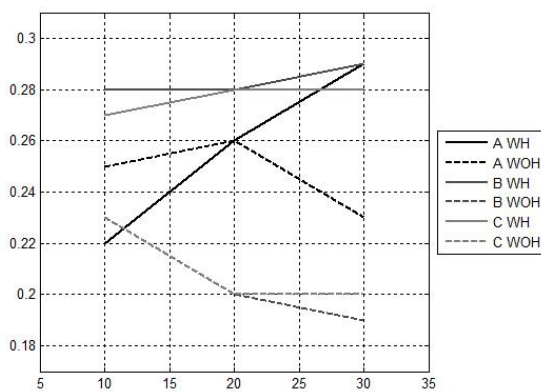


Figure 5 Roughness vs input voltage obtained for the three devices with and without horn.

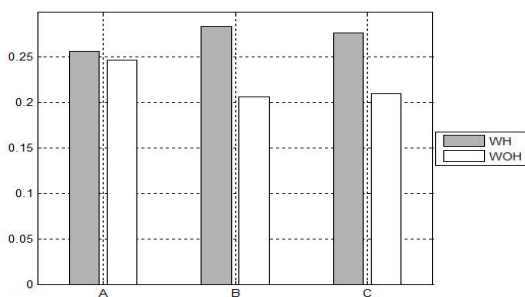


Figure 6 Averaged roughness value for each drive.

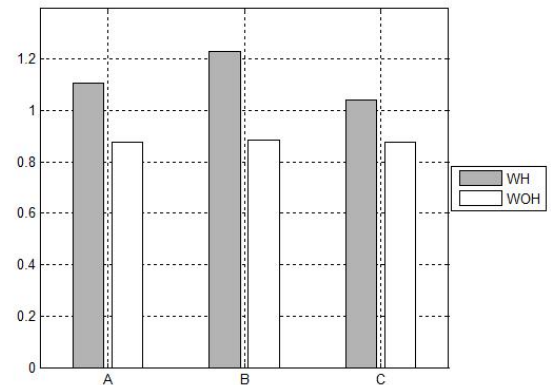


Figure 7 Averaged tonality value for each drive.

#### 4.2. Rnonlin

Taking as the reference signal the one registered in device B with an input voltage of 5 V (as this is the recording with less THD) the following values of Rnonlin are obtained:

WOH	A	B	C
10V	0,3913	0,5835	0,3989
20V	0,3942	0,5811	0,4017
30V	0,4111	0,4280	0,3743

Table 3 Rnonlin values with no attached horn at different input voltages.

WH	A	B	C
10V	0,4009	0,3965	0,3904
20V	0,4446	0,4447	0,4318
30V	0,4081	0,4815	0,4563

Table 4 Rnonlin values with attached horn at different input voltages.

Figure 7 shows the averaged Rnonlin values for each device.