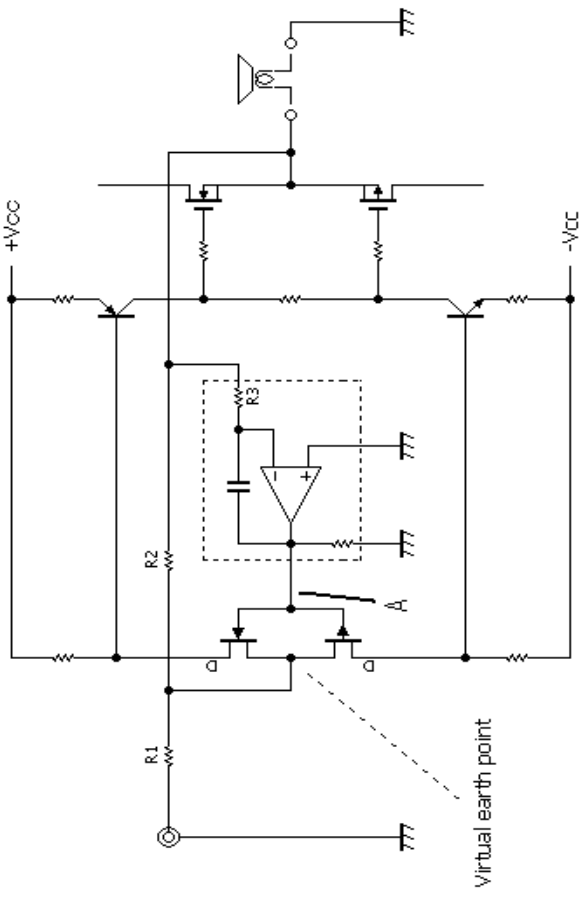
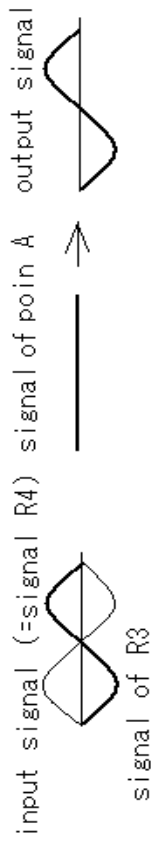


### <3> WORK of Additional DC servo

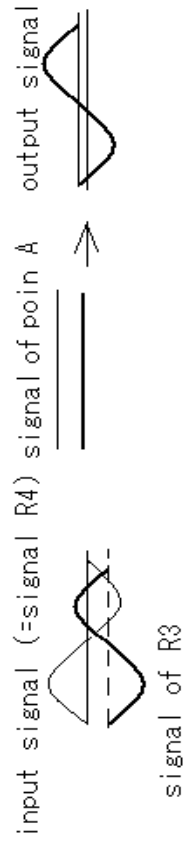


EX The LPF characteristic through point (3dB) is 1Hz,  
and the input signal is 0.01 Hz .  
and  $R1=R2$  ( $=R3=R4$ ) gain=1

[1] The case there is no DC offset.



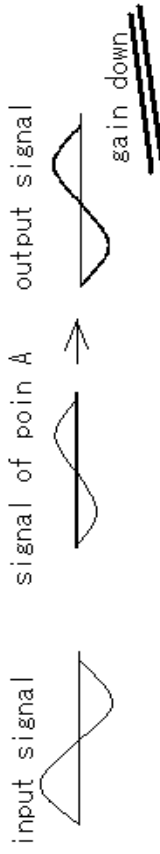
[2] The case there is some DC offset.



Attention)

Because actual deflection enters a certain state of equilibrium, this is an image.

[1] The case there is no DC offset.



[2] The case there is some DC offset.

