

Figure 8: Sound pressure levels for three frequencies (200, 650 and 2000 Hz) versus distance  $r$ , compared to the ideal reference  $20\log(1/r)$  behaviour.

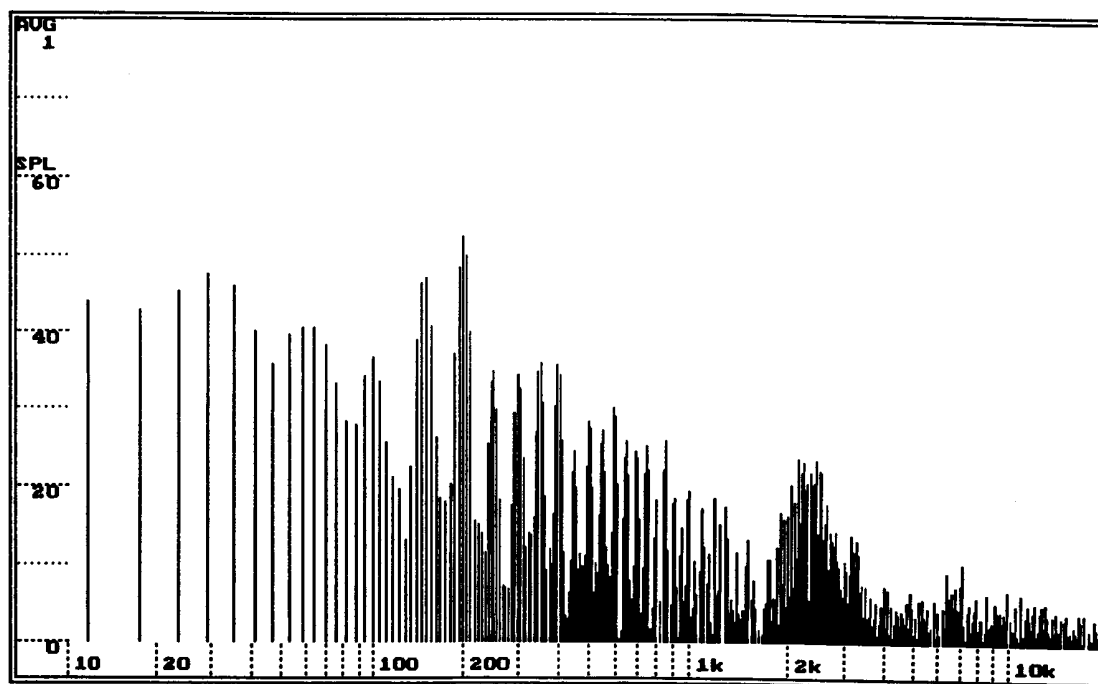


Figure 9: Example of a Liberty Audiosuite measurement of the noise produced in the Noise Test Chamber by a noisy example transformer. The vertical axis is in dB-SPL, while the horizontal axis shows the frequency in Hz.