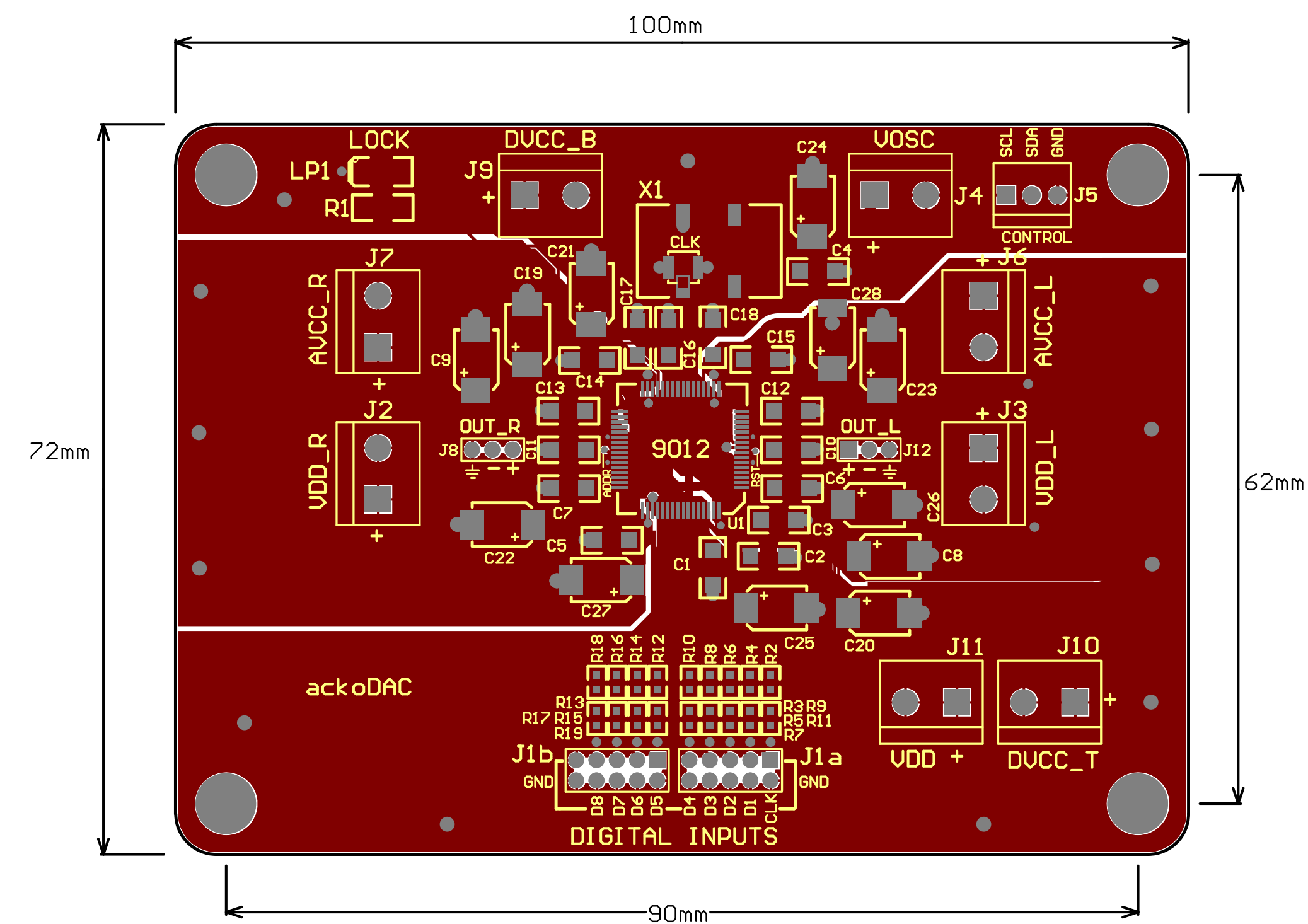


ackoDAC MODULE



SPECIFICATIONS

- * Sabre32 ES9012 Chip in stereo differential mode or Full Mono operation
- * Dual Layer high frequency/mixed signal optimised layout on 2oz board with gilded finish
- * All separate External power supply feeds (8). Fully decoupled close to chip using COG Ceramic
- * Mounting positions for Ultra Low Z 100uf Polymer Caps for extra filtering and noise absorbtion
- * Super low jitter smd clock (X1) using Crystek950 (80MHz) OR Option to pipe in external Master clock via coax pad (marked 'CLK')
- * Differential current/Voltage output signal for connection to external IV stage
- * All digital inputs brought out to connector for 8 Channels of SPDIF, DSD and PCM I2S
- * I2C Connection to External MCU for full control (Note: No Micro on-board)