

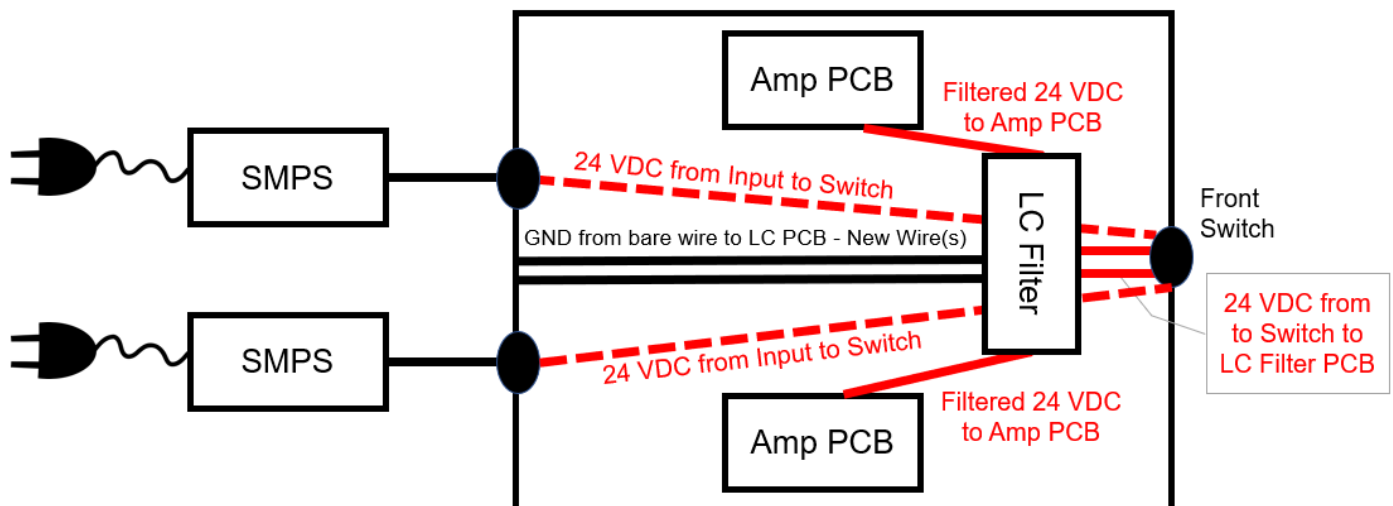
Amp Camp Amp – Power Supply Filter Kit

Dual SMPS Edition

Thank you for participating in this Group Buy on DIYAudio. This power supply filter is inspired by the filter in the recent P-Channel Sony VFET amplifier by Nelson Pass and adapted to the ACA. This filter uses a dedicated LC filter for each amp PCB. It is a low pass filter designed to filter out high frequency trash from the Switched Mode Power Supply (SMPS). Dual SMPS edition board/kit is 2 separate filters on a single PCB.

Instructions:

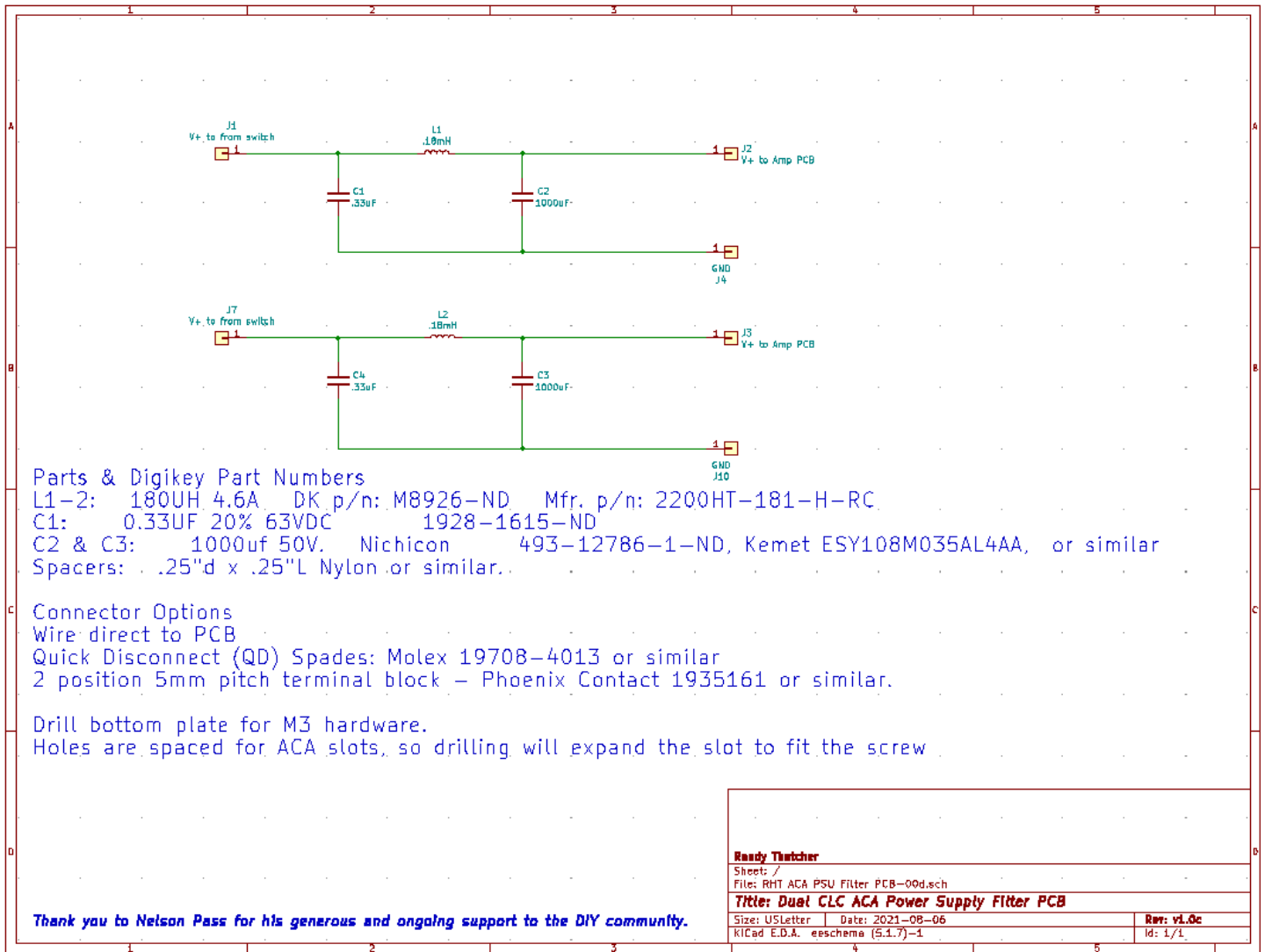
- Populate the PCB.
- Leave the red wires from 24VDC input in the back of chassis to the switch in place. This assumes Dual SMPS build has a DPDT switch in front.
- You will cut the red wires between the switch and the amp PCB's.
 - Connect red wire from each Amp PCB to filter PCB
 - Connect 2x red wire from switch to filter PCB input
- Add a 2 new ground wires from the filter PCB to the bare wire / ground bus in back of amp.
- Mount the PCB on the bottom panel using the standoffs.
- Email or post questions on DIYAudio.
- Enjoy!



Thank you!

Randy Thatcher (rhthatcher)
randallthatcher@gmail.com

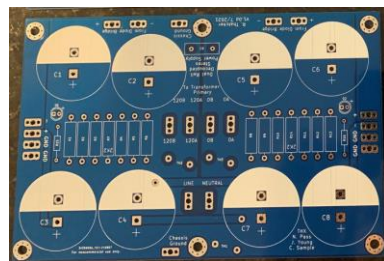




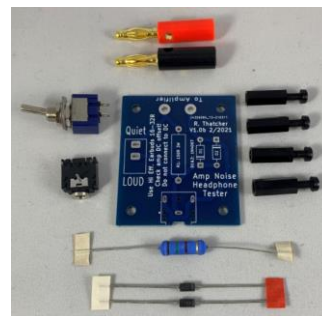
Some other items that are also available – email or send a message on DIY Audio.



Precision matched MOSFETS
 IRFP240, IRFP9240,
 IRF9610 Kits.
 F5 Turbo V3 kit shown



"New Alternative" Power Supply PCB
 Dual rail decoupled CRC
 power supply with A/C Cap
 and CL-60 soft start. Based
 on F5 Power Supply Design.



Headphone Hum Tester
 Use to fix hum / ground
 loops when rotating a
 transformer and doing
 wire routing and
 dressing.



Bridge Rectifier & Snubber PCB
 Also: CL-60/AC cap
 PCB
 GPBC / CL60 bridge
 ground PCB