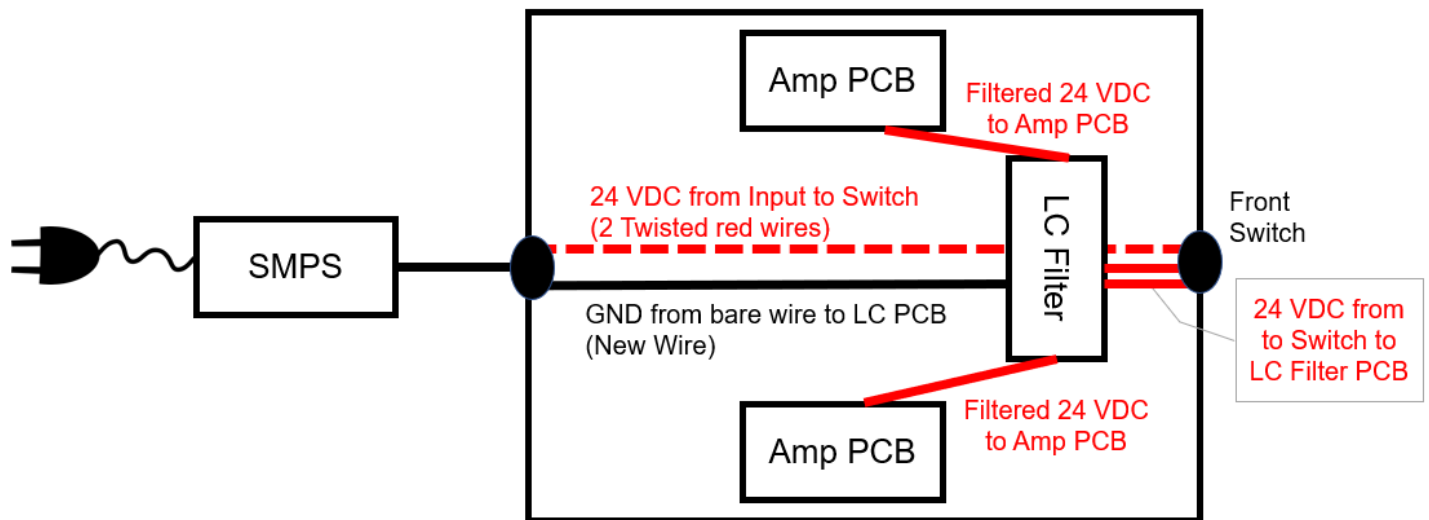


Amp Camp Amp – Power Supply Filter Kit

Thank you for participating in this Group Buy on DIYAudio. This power supply filter is inspired by the filter in the recent P-Channel Sony VFET amplifier by Nelson Pass and adapted to the ACA. This filter uses a dedicated LC filter for each amp PCB. It is a low pass filter designed to filter out high frequency trash from the Switched Mode Power Supply (SMPS).

Instructions:

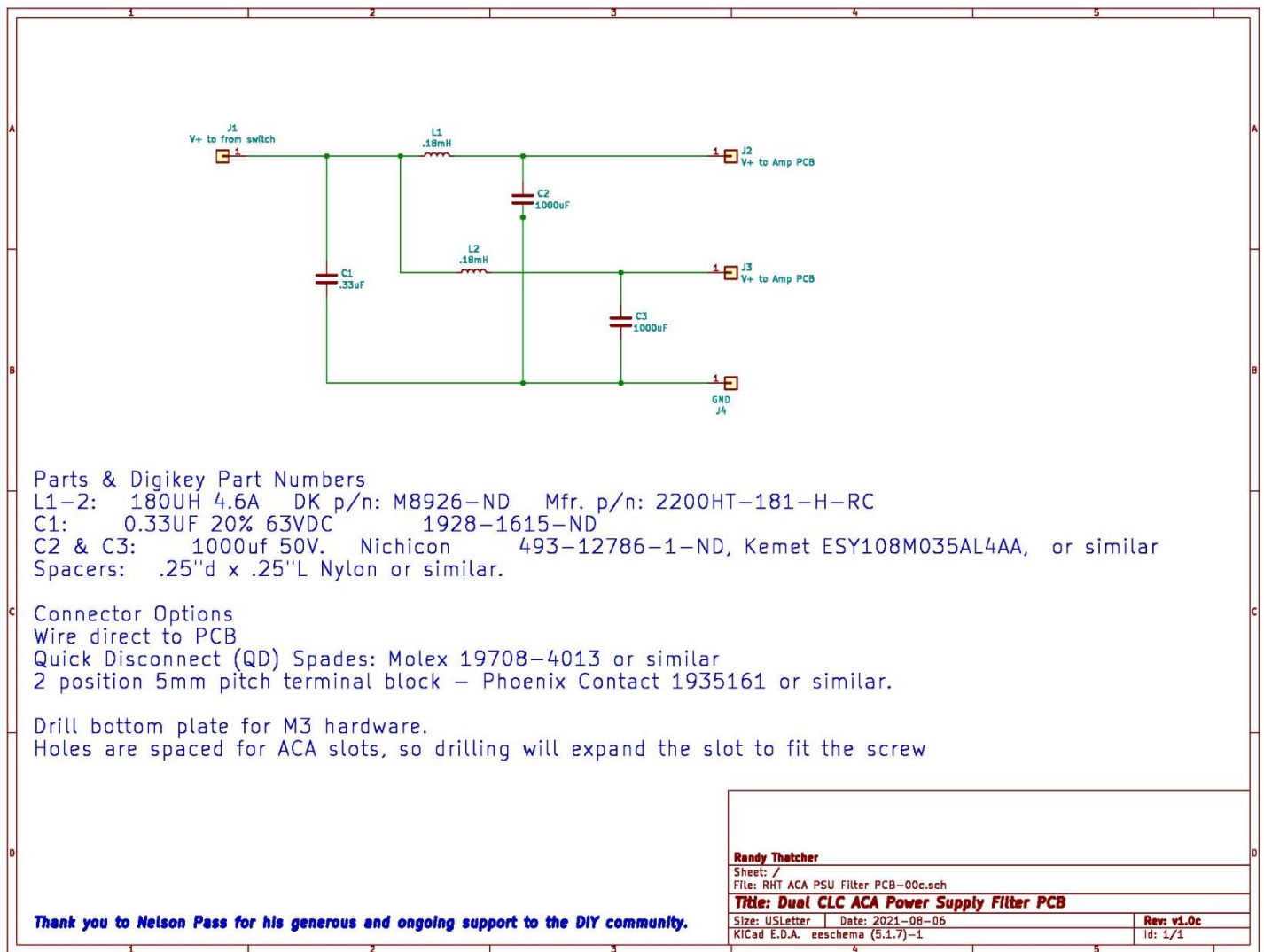
- Populate the PCB.
- Leave the twisted/double red wires from 24VDC input in the back of chassis to the switch in place.
- You will cut the red wires between the switch and the amp PCB's.
 - Connect red wire from each Amp PCB to filter PCB
 - Connect 2x red wire from switch to filter PCB input
- Add a new ground wire from the filter PCB to the bare wire / ground bus in back of amp.
- Mount the PCB on the bottom panel using the standoffs.
- Email or post questions on DIYAudio.
- Enjoy!



Thank you!

Randy Thatcher (rhthatcher)
randallthatcher@gmail.com

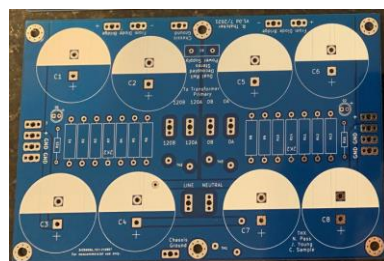




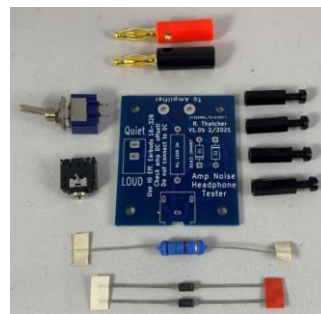
Some other items that are also available – email or send a message on DIY Audio.



Precision matched MOSFETS
 IRFP240, IRFP9240,
 IRF9610 Kits.
 F5 Turbo V3 kit shown



“New Original” Power Supply PCB
Dual rail decoupled CRC power supply with A/C Cap and CL-60 soft start. Based on F5 Power Supply Design.



Headphone Hum Tester
Use to fix hum / ground loops when rotating a transformer and doing wire routing and dressing.



Bridge Rectifier & Snubber PCB
 Also: CL-60/AC cap PCB
 GPBC / CL60 bridge ground PCB