

C250, C252 are film caps 04.5mm L10.5mm  
C251, C253 are 5.08mm caps

Designed by BSB	Checked by -	Approved by - date -	Filename AB-1.12	Date 20120305	Scale 1:1
Drawing Number Analog Board 1.12			Q N K T C Top		
				Edition pC08	Sheet 1 of 4

A

B

C

D

E

F

A

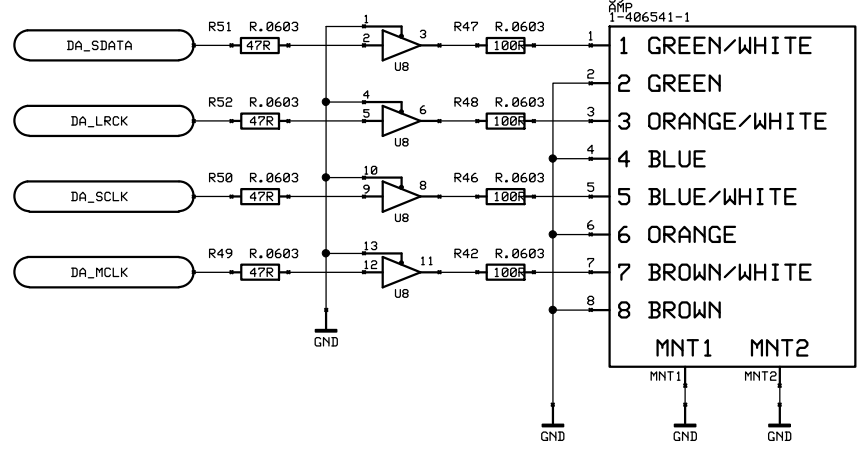
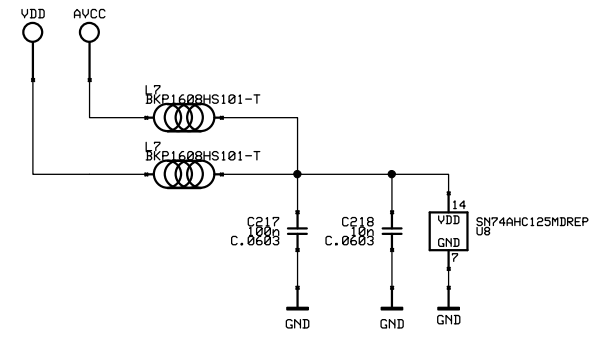
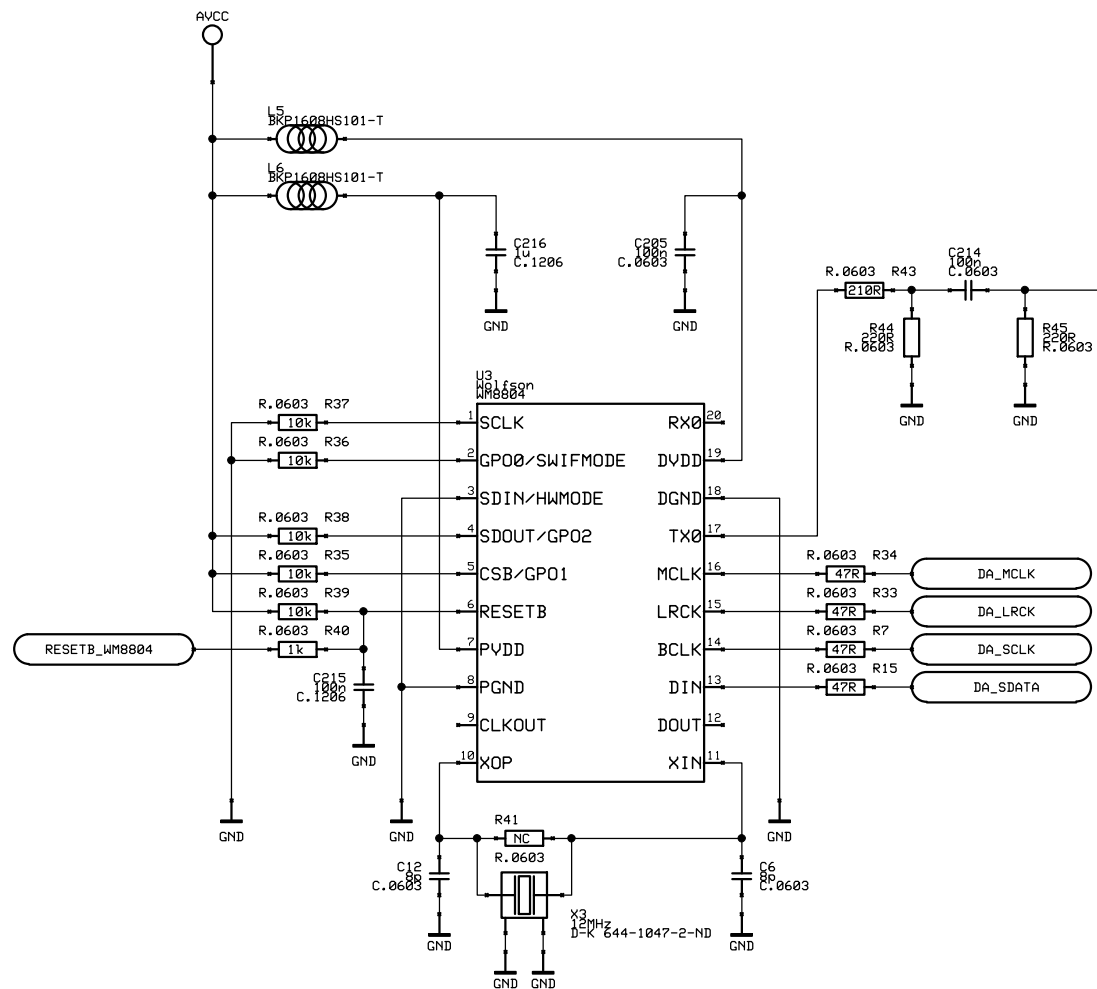
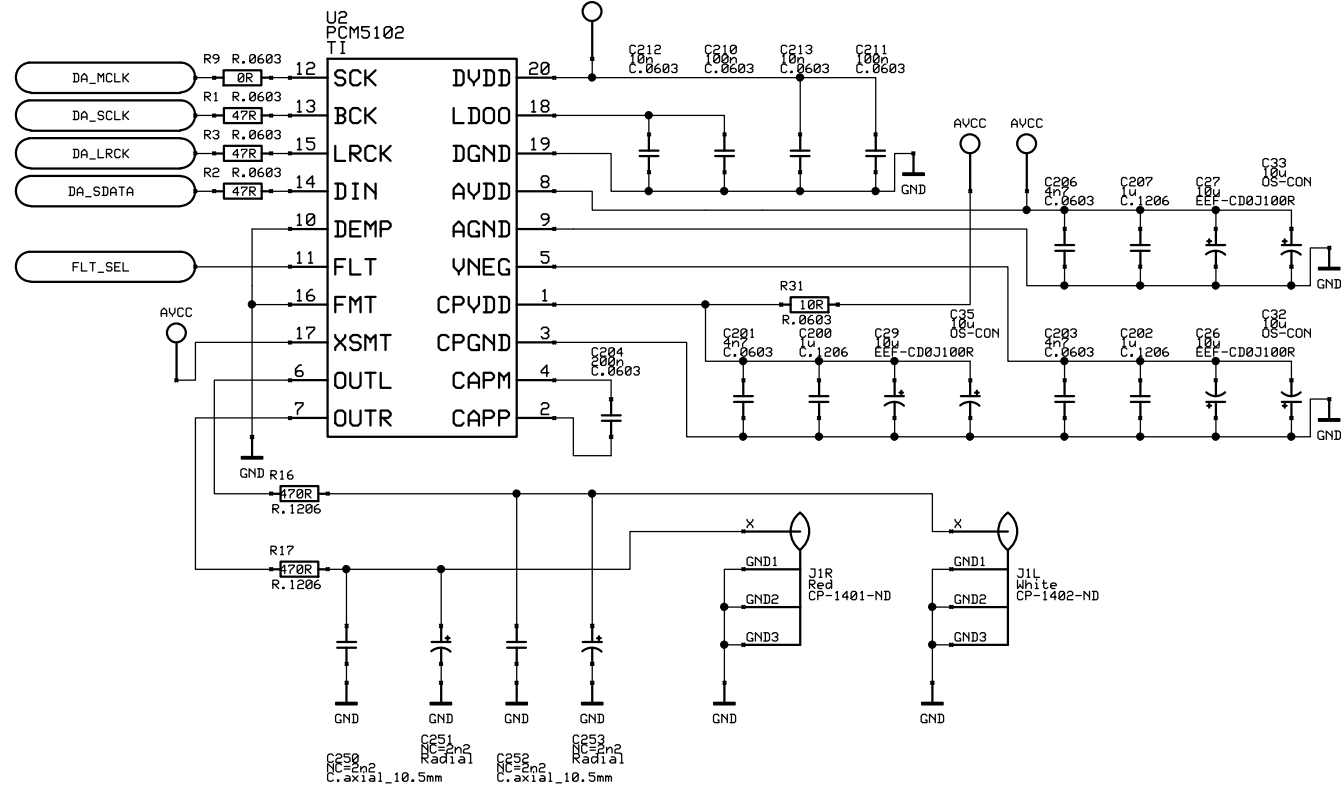
B

C

D

E

F



Rightmost, looking into connector flap up

Leftmost, looking into connector flap up

CAT5 pinout source: <http://www.twistedpearaudio.com/forum/default.aspx?g=posts&t=1260>

Designed by BSB	Checked by -	Approved by - date -	Filename AB-1.12	Date 20120305	Scale 1:1
Drawing Number Analog Board 1.12			Q N K T C Outputs		
			Edition pC08		Sheet 2 of 4

A

B

C

D

E

F

A

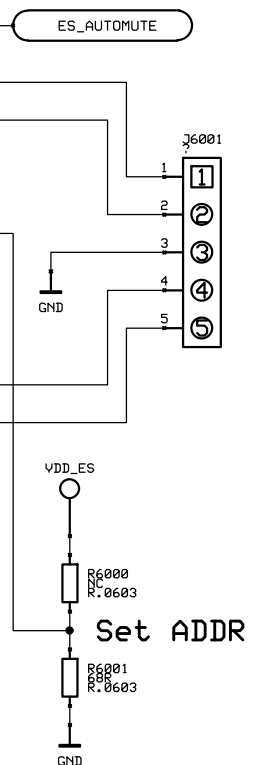
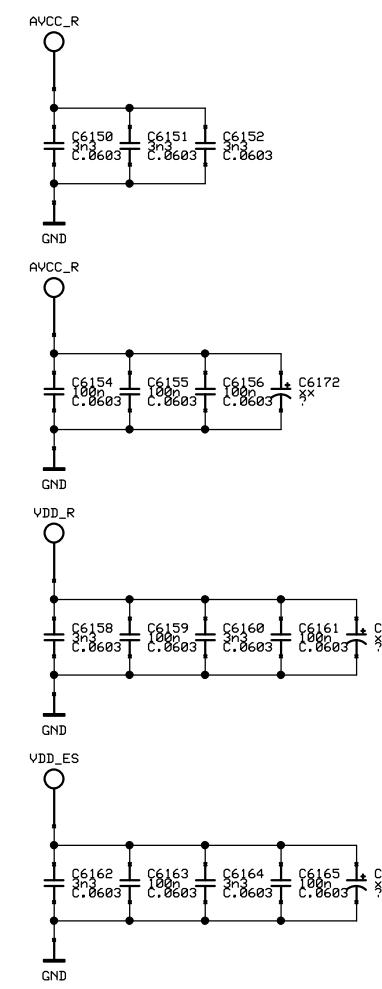
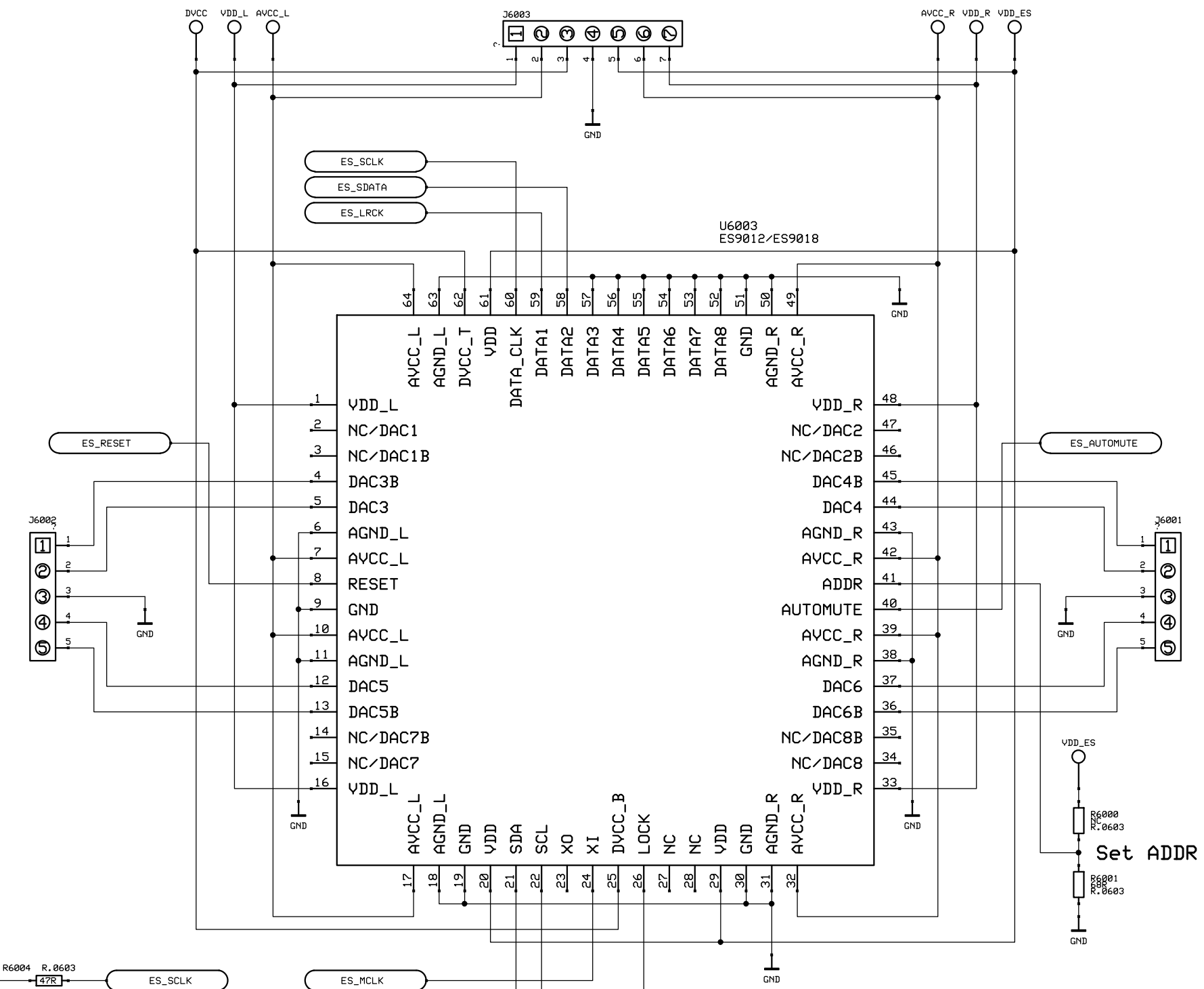
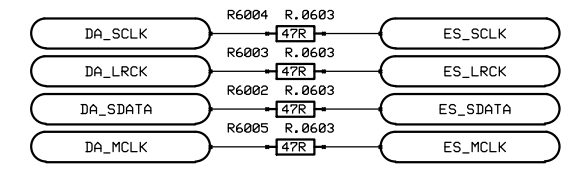
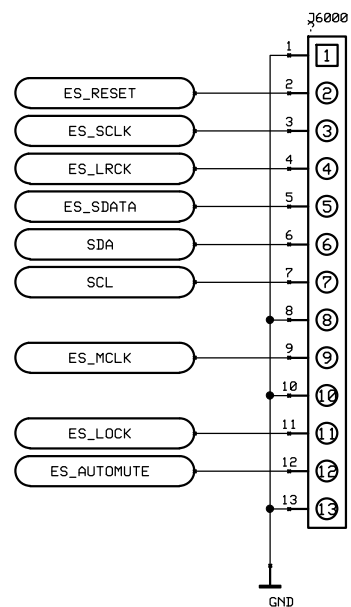
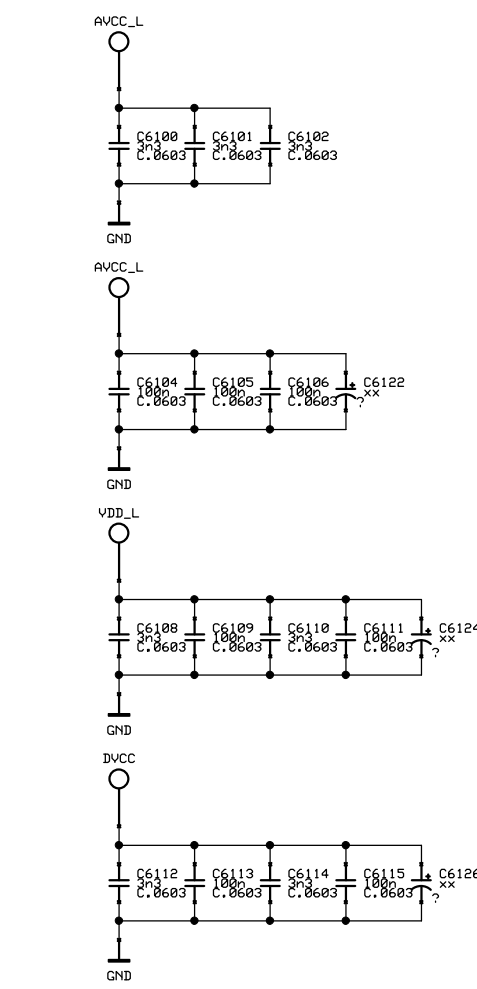
B

C

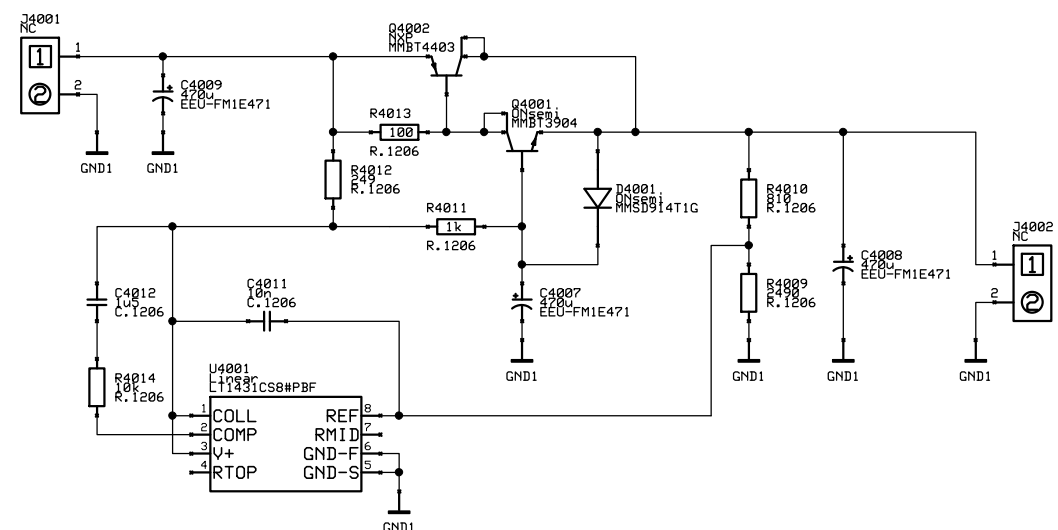
D

E

F



Designed by BSB	Checked by -	Approved by - date -	Filename AB-1.12	Date 20120305	Scale 1:1
Drawing Number Analog Board 1.12			Q N K T C ES9012		
			Edition pC08		Sheet 3 of 4



Designed by BSB	Checked by -	Approved by - date -	Filename AB-1.12	Date 20120305	Scale 1:1
Drawing Number  Analog Board 1.12			Q N K T C PSU		
					Edition pC08