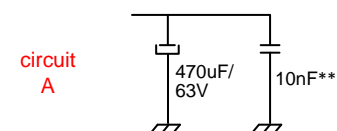
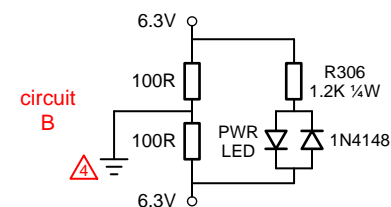


- 1 B+ switch and 1A slow blow fuse inserted here.
- 2 Now 5U4GB.
- 3 Possibly 6SL7?
- 4 These three points at chassis, all other circuit grounds connect through **circuit C**.
- 5 C301-2 paralleled with 200k bleeder resistors.
- 6 No connection to ground. (Eliminates possibility of hum.)
- 7 audio grade, automotive
- 8 Now JJ KT77.
- \* audio grade, polypropylene
- \*\* audio grade, polyester film

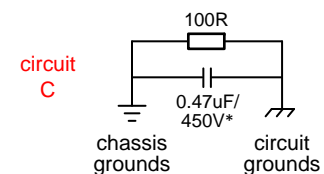


**Cathode Bypass Capacitors** -  
Increases gain and provides  
better high frequency response.



**Heater Balance Resistors** -  
Reduces hum from any  
possible imbalance of  
filament windings.

**LED Power-On Indicator** -  
Use instead of neon indicator  
which can partially light  
because of C304 leakage.



**Ground Isolation Circuit** -  
Reduces line-conducted  
noise while providing DC  
path for safety ground.

## GEEK STUFF International

Douk Audio A9 Tube Amp

5 Feb '17

**Suggested Modifications**

Rev 1.2

Schematic Mods - 2