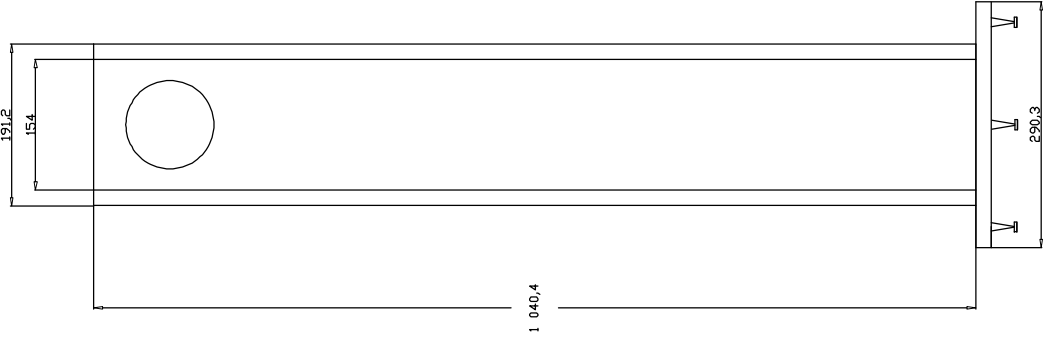
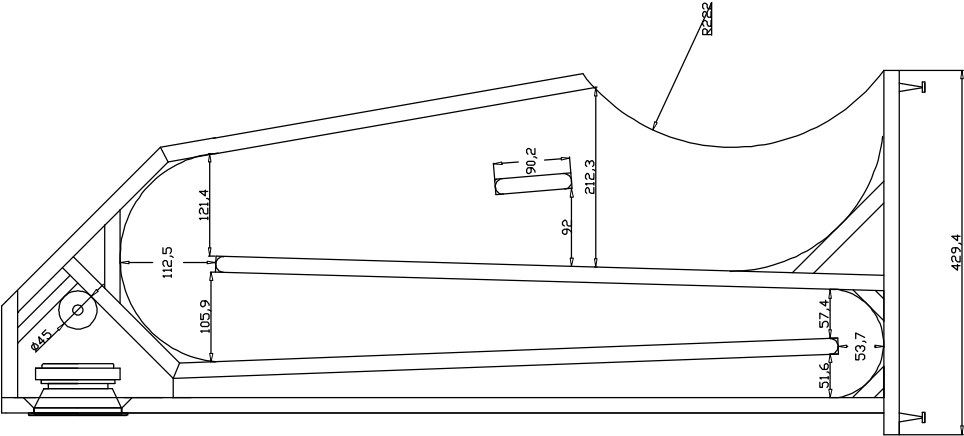


CC 2.1 l net
Driver volume
0.26l
45mm styro
foam tube



All ply 0.72
Based on A126 rev H
Metric version
Drawn in scale 1:1

REVISIONS		DATE	BY	APP'D
1	Initial			
2	Revised			
3	Revised			
4	Revised			
5	Revised			
6	Revised			
7	Revised			
8	Revised			
9	Revised			
10	Revised			
11	Revised			
12	Revised			
13	Revised			
14	Revised			
15	Revised			
16	Revised			
17	Revised			
18	Revised			
19	Revised			
20	Revised			
21	Revised			
22	Revised			
23	Revised			
24	Revised			
25	Revised			
26	Revised			
27	Revised			
28	Revised			
29	Revised			
30	Revised			
31	Revised			
32	Revised			
33	Revised			
34	Revised			
35	Revised			
36	Revised			
37	Revised			
38	Revised			
39	Revised			
40	Revised			
41	Revised			
42	Revised			
43	Revised			
44	Revised			
45	Revised			
46	Revised			
47	Revised			
48	Revised			
49	Revised			
50	Revised			
51	Revised			
52	Revised			
53	Revised			
54	Revised			
55	Revised			
56	Revised			
57	Revised			
58	Revised			
59	Revised			
60	Revised			
61	Revised			
62	Revised			
63	Revised			
64	Revised			
65	Revised			
66	Revised			
67	Revised			
68	Revised			
69	Revised			
70	Revised			
71	Revised			
72	Revised			
73	Revised			
74	Revised			
75	Revised			
76	Revised			
77	Revised			
78	Revised			
79	Revised			
80	Revised			
81	Revised			
82	Revised			
83	Revised			
84	Revised			
85	Revised			
86	Revised			
87	Revised			
88	Revised			
89	Revised			
90	Revised			
91	Revised			
92	Revised			
93	Revised			
94	Revised			
95	Revised			
96	Revised			
97	Revised			
98	Revised			
99	Revised			
100	Revised			