

TC9134P

T-77-11

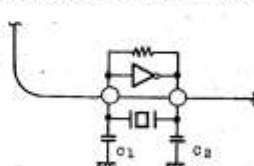
PIN NO.	SYMBOL	FUNCTIONAL DESCRIPTION	INPUT/OUTPUT CONFIGURATION
17 18	CP ₂ CP ₁	Cyclic signal output When a signal is received, output is reversed. CP ₁ can also be controlled from a receiving IC.	
19 20 23~42	SP ₂₂ ~SP ₁	Single-shot signal (single pulse) output When an instruction signal is received, designated output of "L" level pulse only is transmitted. About 140ms	
21,22	V _{DD} ,GND	Supply voltage applying terminal	

OPERATIONAL DESCRIPTION

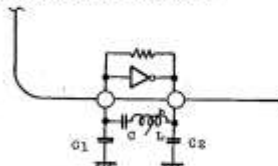
1. OSCILLATION CIRCUIT

All timings, such as timing with the transmitter, D/A converter clock, interval operating clock, are decided by frequencies generated by this oscillator. 455 kHz is used as the standard frequency.

The oscillation circuit has the built-in linear amplifier with a C-MOS inverter, and an oscillator can be easily constructed by connecting a 455 kHz ceramic oscillator to X_T and \bar{X}_T pins. In addition, an oscillation circuit using L, C circuit also can be composed.



Example using ceramic oscillator
Ceramic KBR-455B (Kyoto Ceramics)
C₁, C₂ 50 ~ 150pF



Example using L, C circuit