



R-Tools Simulation - Design Output Summary

User: Anthony Tagg (atagg@etratesh.com)
Project: Aelph
Simulation Date: 2009-03-18 08:30:38

Thermal Design Details

Heatsink type: Extrusion
Part number: Extrusion: 9013
Weight: 3.58069 kg
Heatsink dimensions: 176.53 mm wide x 254.0 mm long x 66.39 mm high
Material: Aluminum
Finish: B

Environment

Ambient Temperature: 72.0 F
Altitude: 300.0 ft

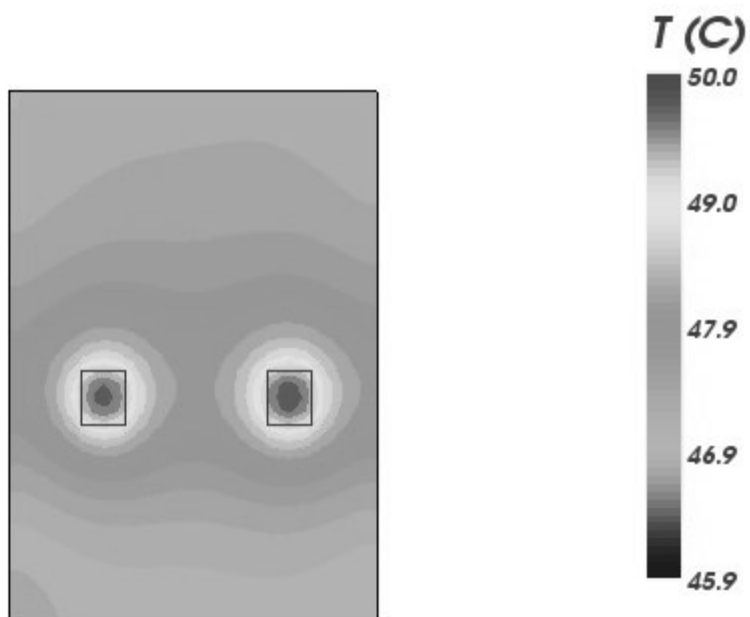
Thermal Design Details

Source Names	%sc	Power	Tsink-avg	Temperature		
				Tsink-max	Tcase	Tjunction
			C	C	C	C
source2	1.2%	22.0 W	49.6	49.9	49.9	84.5
source3	1.2%	22.0 W	49.6	50.0	50.0	84.6

Hydraulic Design Details

Type of Flow: Natural convection
Fluid: Air
Total Pressure Drop: 5.891 Pa
Exit Temperature: 46.3 C

Baseplate Temperature Profile



[Download Qfin4 project file](#)