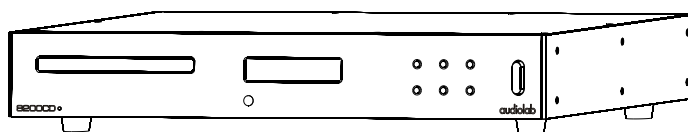


Service Manual

E l e c t r o n i c s

8200CD



VERSION HISTORY

Rev	Date	Update Content
V01	2010.10.14	First Version

1. Introduction	1
2. Specification	2
3. Assembly Sketch	3
4. Schematic Diagram	4-5
5. Wiring Diagram	6
6. Silkscreen of Top/Bottom	7-11
7. Maintenance Alignment Procedure	12
8. Assembly Parts List	13-14
9. Electronic Parts List	15-24

No part of this document may be reproduced or transmitted in any form or by any means, electronic or mechanical, for any purpose, without the express written permission of International Audio Group Limited (IAG)

This manual is for the exclusive use of IAG, its approved distributors and approved UK service agents.

No part of this manual shall be transferred to any other party without the express written permission of IAG.

It is the responsibility of the user to ensure that all the information contained in this manual is current. Notification for new issues of this manual and minor updates will be given via the IAG web-site or on request.

This manual has been prepared with the greatest care, it is intended for information only and no liability shall be accepted for errors or changes to specification.

For further service information, parts lists and updates, please contact our web-site at [www.international audio group.com](http://www.internationalaudio.com) .

© 2010 International Audio Group Limited. All rights reserved.

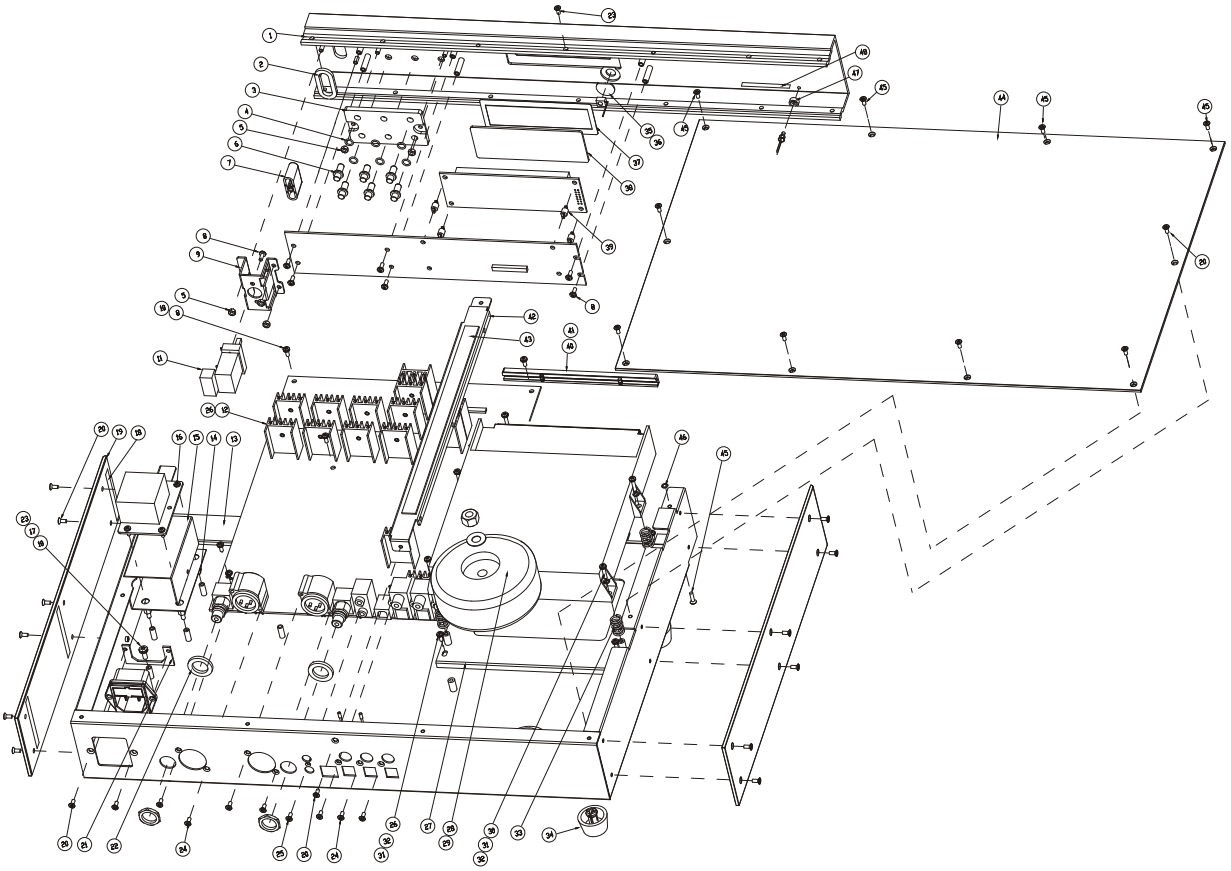
8200CD-Specification And Features -P1/1

Output Level @ 1KHz (Standard Setting)	RCA:2.05Vrms±0.1
	XLR:4.1Vrms±0.1
Frequency Respones,Ref.1KHz,20Hz to 20KHz	RCA:±0.2dB
	XLR:±0.2dB
THD 1KHz,0dB,20Hz to 20KHz BW	RCA:<0.0025%
	XLR:<0.0008%
Crosstalk 1KHz	RCA:> 120dB
	XLR:> 130dB
Dynamic Range Awtd	RCA:> 98dB
	XLR:> 110dB

Product Features

- 32Bit 84.672MHz Oversampled/Upsampled 512 Element MultiBit Array DAC
- x1920 times Oversampled with CD/USB 44.1KHz Source
- Asynchronous USB supporting 24 Bit /96KHz with Driverless Remote Control of PC/MAC Media Player(Via HID Support)
- x2 176.4KHz 24Bits Coax SPDIF Digital Inputs
- x2 96KHz Optical Digital Inputs
- x3 2Vrms Analogue Line level inputs (CDQ)
- Low Jitter Optical and Coax SPDIF Output (CD Digital Output only)
- Selectable Analogue or Digital Pre-Amplifier Mode (CDQ)
- High Current Single Ended & Balanced Discrete Class A Output stages
- High Performance Drirect coupled Discrete Class A Headphone Amplifier (CDQ)
- Custom CD Servo Design-with Ultra Low Noise PSU for OPU
- Full Remote control & External Remote I/O loop
- 34 Regulated supply rails
- 14 Ultra Low Noise Discrete Regulators
- User Selectable Digital Filters-Software upgradeable Via USB Port
- Master Clock Jitter less then 3pS Short Term.Measured directly at DAC "XOut"
- Organic Ultra Low ESR cappacitors,High Tolerance Polypropylene film/Foil capacitors,Ultra Stable Very Low VCR 0.1% MELF SMD resistors,4 Layer PCB.

ASSEMBLY SKETCH

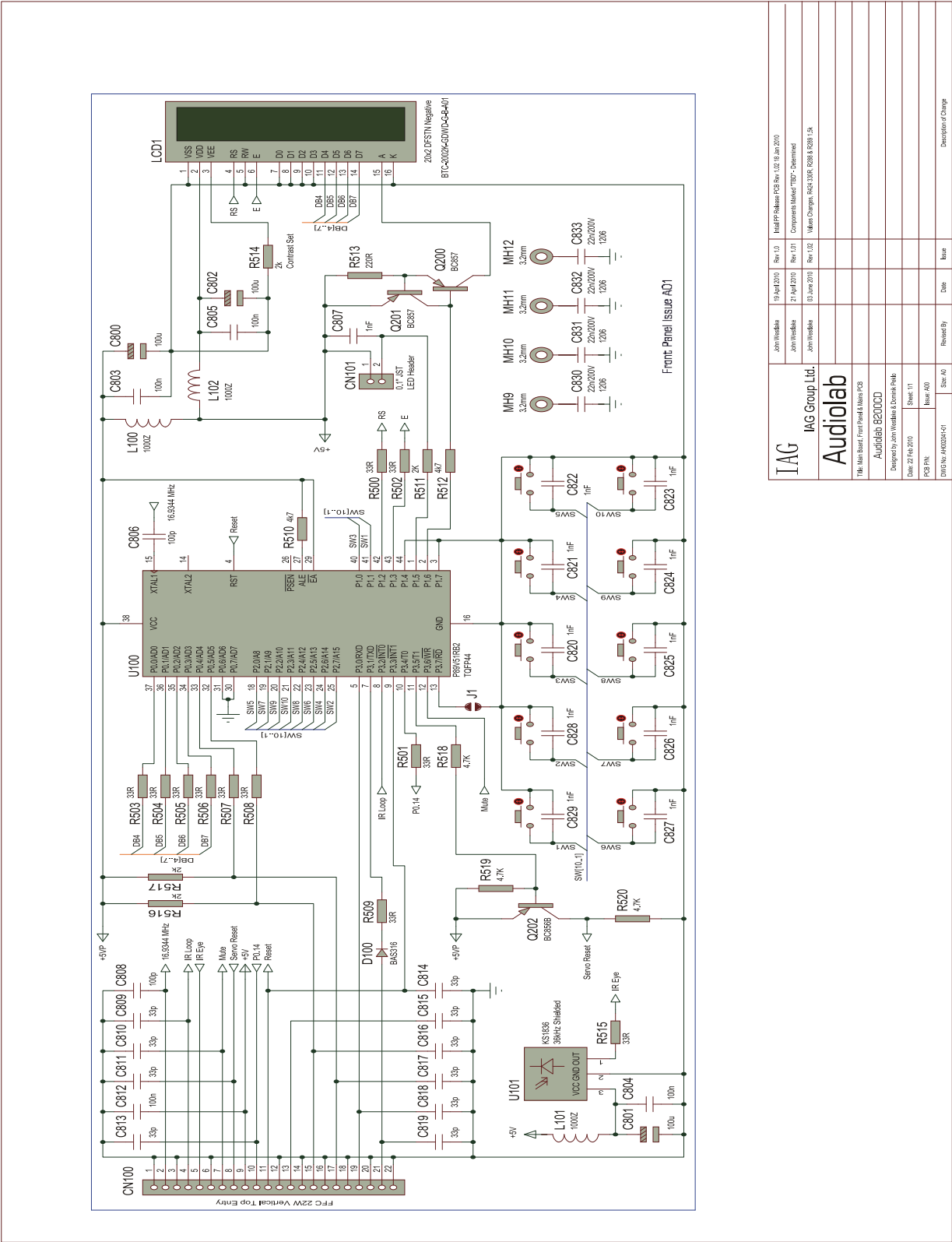


8200CD-Mainboard-P1/1



SCHEMATIC DIAGRAM

8200CD-Front Board-P1/1

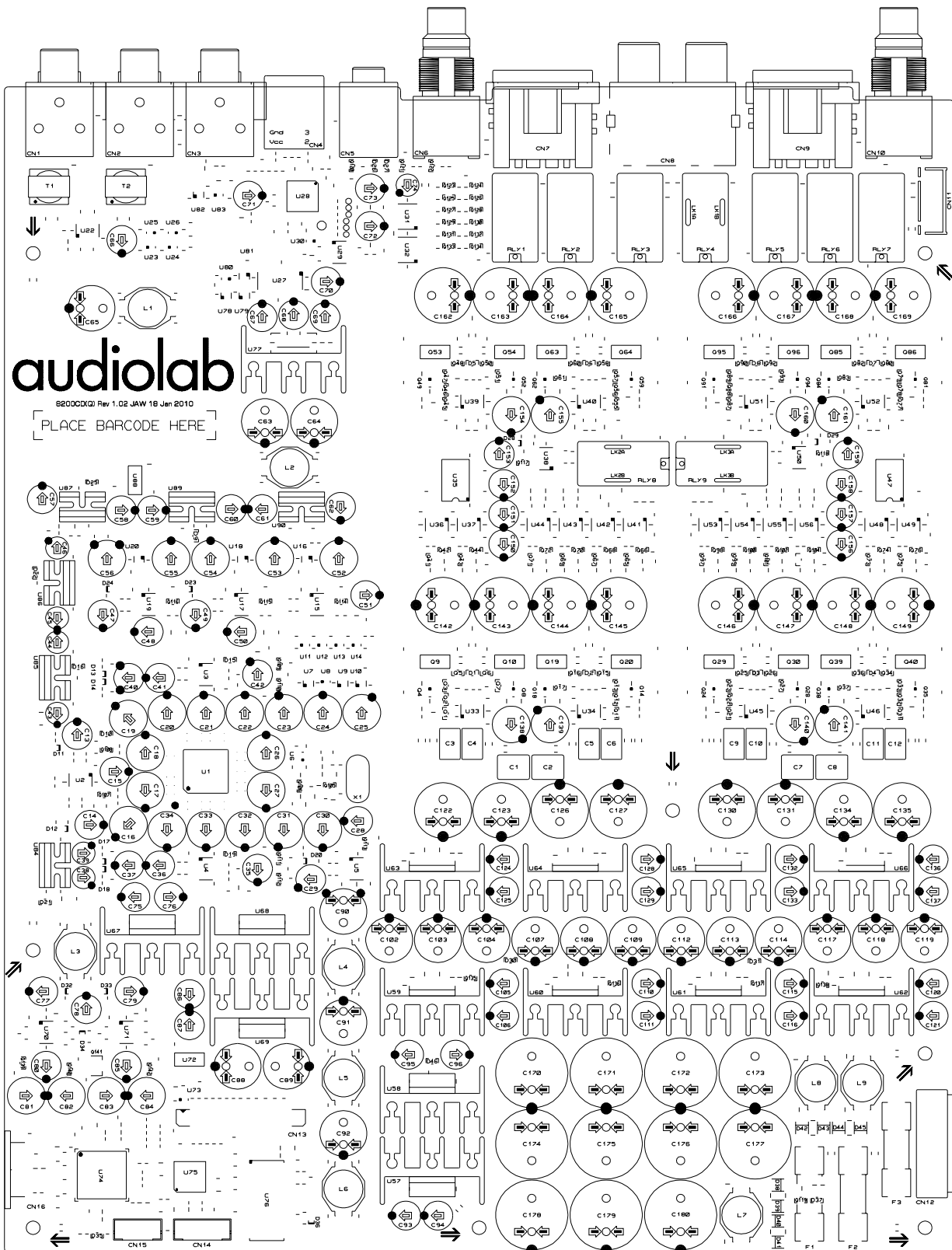


IAG IAG Group Ltd. Audiolab	John Veehake	19 April 2010	Rev 1.0	Initial PCB Release PCB Rev 1.02 18 Jan 2010
	John Veehake	21 April 2010	Rev 1.01	Components Manufacturer "TBD" - Supplimented
	John Veehake	03 June 2010	Rev 1.02	Values Changed: R462 500K, R468 & R469 50K
This is the Main Board of the Front Panel & Main PCB				
Audiolab 8200CD				
Designed by John Veehake & Donald Pinks				
Date: 27 Feb 2010	Sheet: 11			
PCB P/N:	Board: A01			
2002 No. 449204-01	Rev: A0	Released By:	Date:	Issue
				Description of Change

8200CD-Wiring Diagram-P1/1

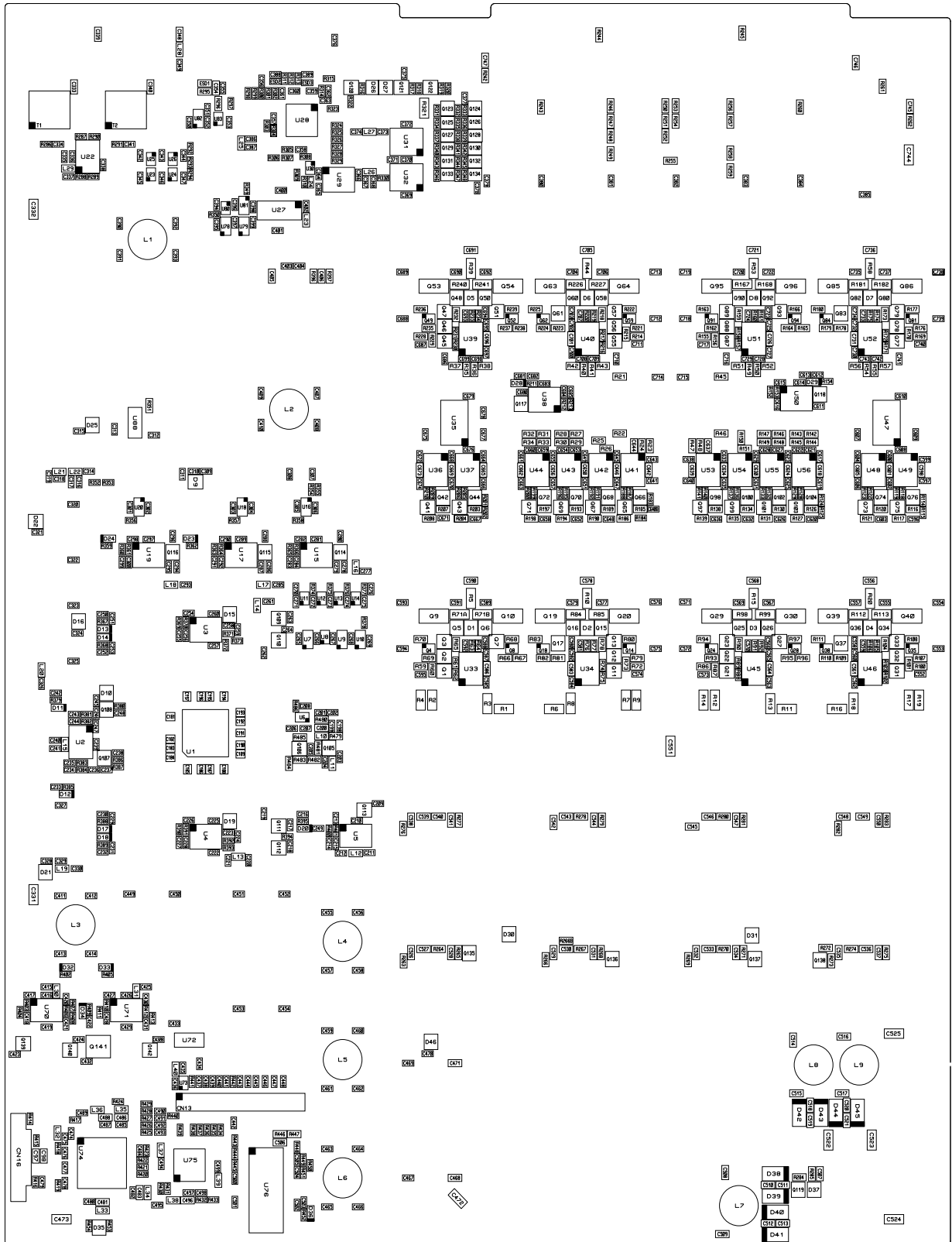


8200CD-MainBoard-Top- Silkscreen-P1/2

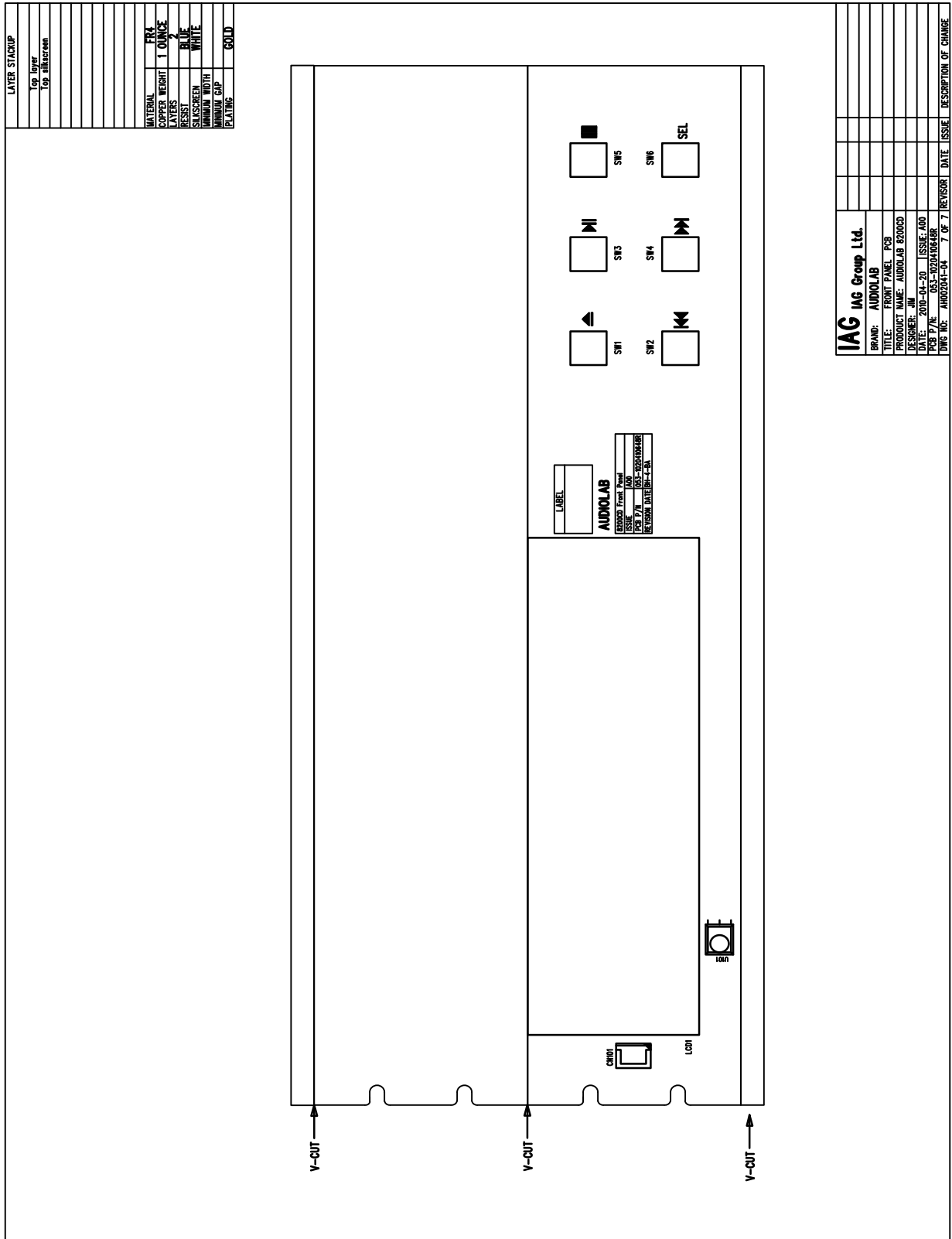


SILKSCREEN OF TOP / BOTTOM

8200CD-MainBoard-SMD- Silkscreen-P2/2

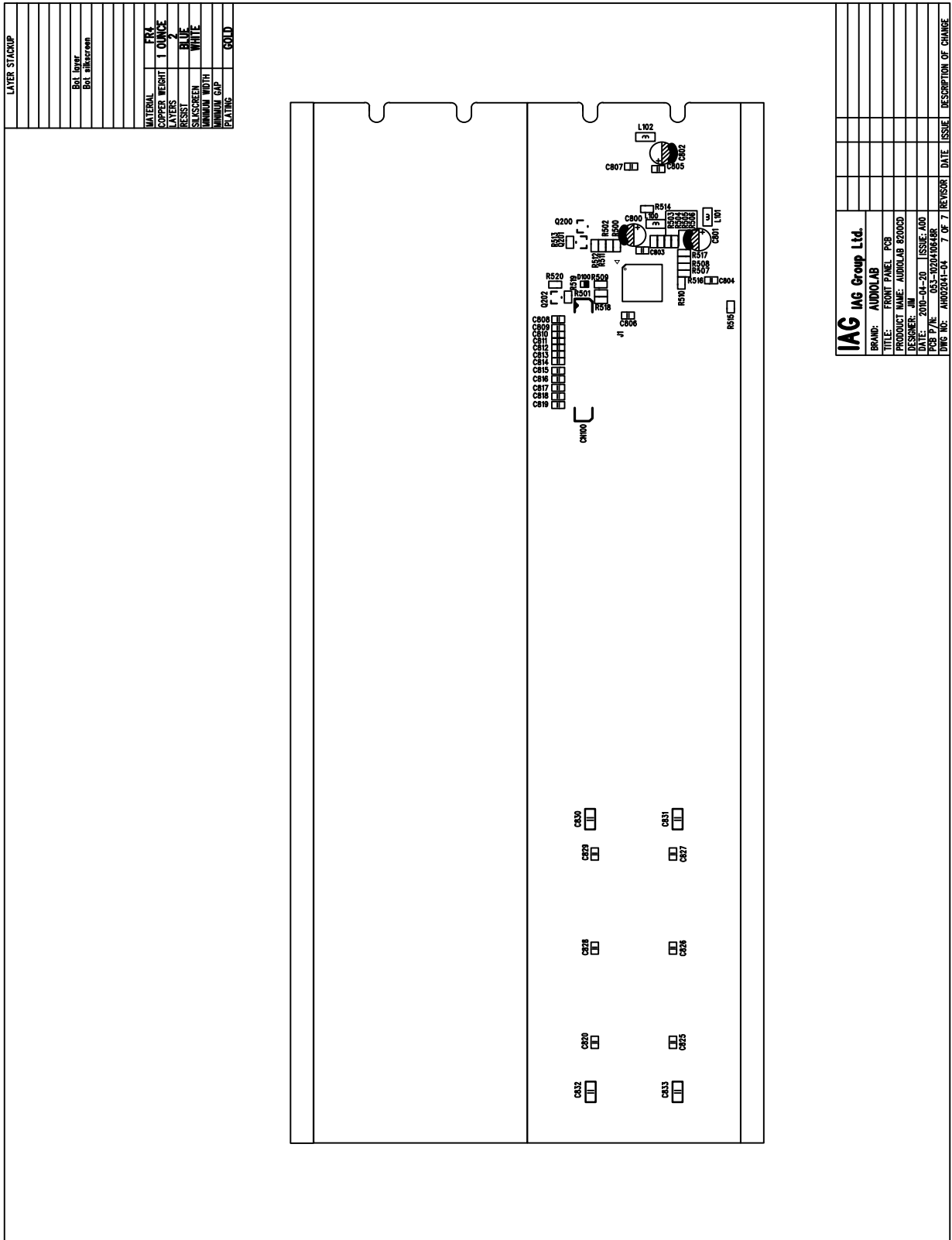


8200CD-Front Board-Top - Silkscreen-P1/2



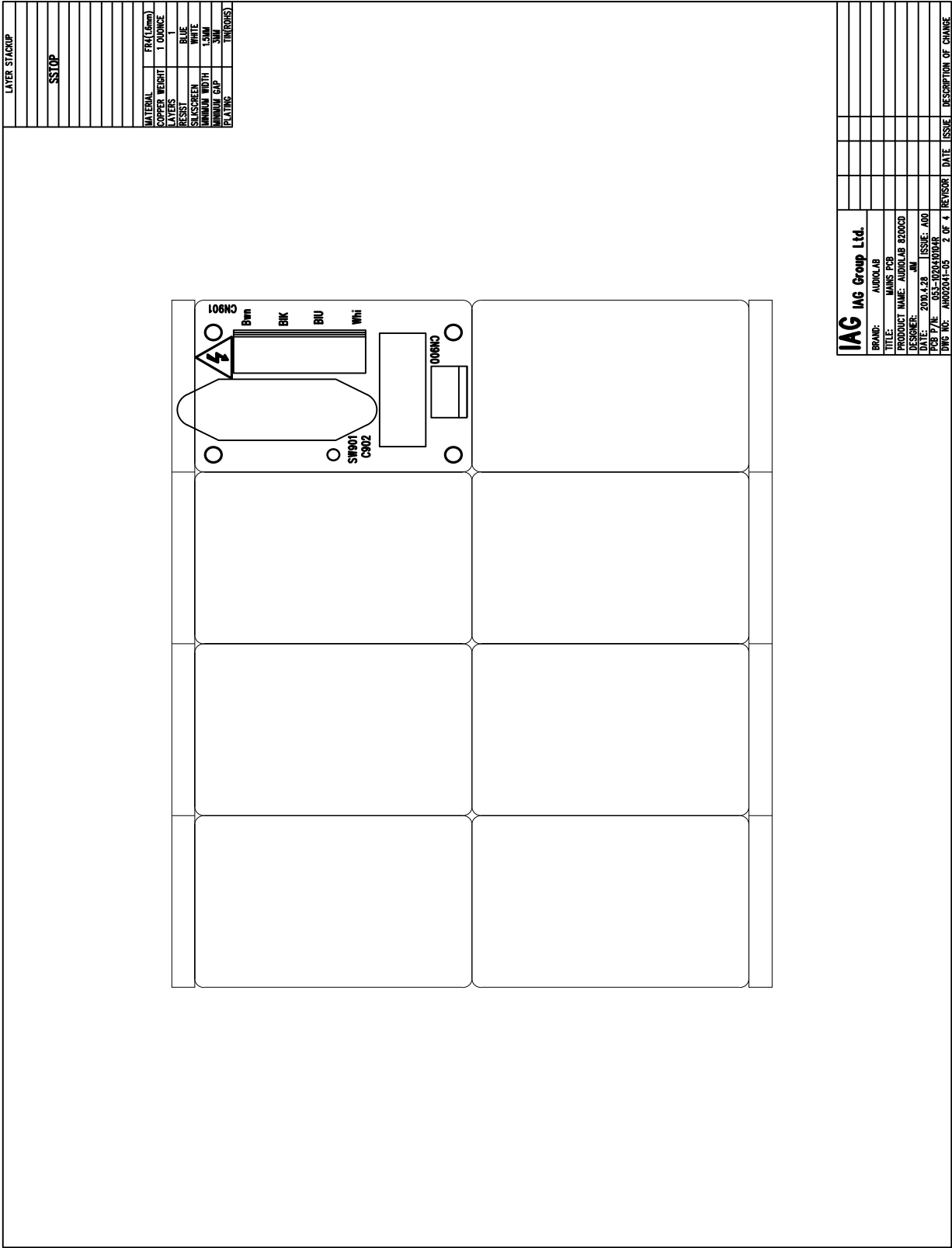
SILKSCREEN OF TOP/BOTTOM

8200CD-Front Board-Bottom - Silkscreen-P2/2




SILKSCREEN OF TOP / BOTTOM

8200CD-Voltage Conversion Board-Top - Silkscreen-P1/1



MAINTENANCE ALIGNMENT PROCEDURE

8200CD-Ageing test step-P1/1

Ageing test step	Equipment and Tools
1: Ageing test 1):Set the step transformer of AC mains to the rated voltege, the tolerance is 5%. 2):After voltage is set correctly, press "EJECT" to put in the disc, and play it repeatedly without stop for 8 hours. 2: Take out the disc, switch off the unit after above test is finished, and put "PASSED" mark on the unit.	CD disc
	Step tranformer for AC mains
	Multimeter
Notes: 1.During the ageing, check the voltage every 4 hours to ensure it meets above requiriment.	
2.During the ageing, ensure there is no components smoke、 no electrolytic capacitors bulging or leaking、 no resistors opening、 and no output etc. If there is any above issues happen, switch off the unit immediately. Record the problems and report them to leaders. Fix the trouble and recover aging test.	

ASSEMBLY PARTS LIST

8200CD-Assembly Bom-P1/2

R/N	P/N	PART NAME	DESCRIPTION	QTY
1	300-1020410000R	front panel	finish and anodized	1
2	215-1027410001R	button cap	painted	1
3	305-1020410001R	button bracket	64*36*4mm,ABS	1
4	231-3007005102R	rubber washer	Φ5*Φ7*1mm	6
5	500-3050240300AR	nut	M3 NI	5
6	340-1020410000R	function button	painted	6
7	215-1027410000R	power button	painted	1
8	588-3000066037R	screw	M3*6	16
9	305-1027410002R	mains switch bracket	painted	1
10	421-1140000003R	ground sticker	Φ12	1
11	263-0020100102R	EVA	20*10*10 (deep) mm, EVA, with single 3M tape	1
12	604-1020410000R	heat sink	anodized	14
13	309-1020410001-1R	main chassis	painted and silkscreen	1
14	223-0630120601R	plastic post	TP-6	4
15	231-1152070054R	PC pad	70*152*0.5 (thickness)	1
16	534-3002060021R	plastic screw	M3*6	4
17	521-4009050300AR	washer(lock type)	4*9*0.5mm NI	1
18	262-0500005010R	dustproof pad	5*50*0.25mm	16
19	319-1027410001R	side panel	sand blasting,anodized silver/black	2
20	534-3002061006R	screw	M3*6	20
21	308-1024000000R	metal plate for main bracket	SECC 44*23.5*1.5mm	1
22	262-0200013011R	washer	Φ20*Φ13*2.6MM	2
23	536-4001060301AR	screw	MB(+)*4*6 NI D	1
24	524-2923090616R	screw	ST2.9*9.5	7
25	524-2025050601R	screw	ST2*5	1
26	537-3001060806R	screw	M3*6	4
27	308-1020410000R	CD bracket	black painted	1
28	513-6412150780R	washer	Φ6.4XΦ12X1.5 NI	1
29	500-6000000300R	nut	M6	1
30	537-3001121006R	screw	M3*12	4
31	517-3000000800AR	spring washer	M3	4
32	513-3005050800AR	washer	Φ3.2*Φ7*0.5 BZn	4
33	711-0081508231R	spring washer	Φ1.5*MD8*L15*5N	4
34	226-0230191321R	foot	Φ23Φ19*13	4
35	422-0150080102R	double-sided tape II	D15*D8.5*0.12mm 3M tape	1
36	206-2024000001R	transparent lens	D12*2.5mm	1

ASSEMBLY PARTS LIST

8200CD-Assembly Bom-P2/2

37	111-0100183000R	double-sided tape	34*93*0.12	1
38	206-1020410000R	lens	34*93*1.5mm,transparent and colorless	1
39	271-0060000000R	spacer support	LCI-5,nylon 66	4
40	300-1020410001R	CD door	finish and anodized	1
41	553-0030040000R	screw	M3*4 NI	2
42	305-1020410000R	main bracket	painted	1
43	251-2015000200R	EVA	15*1.0mm	0.36
44	302-1020410000R	top cover	sand blasting,anodized silver/black	1
45	534-3002100606R	screw	M3*10	11
46	231-2013005012R	PVC washer	Φ12.5*Φ4.5*0.1mm	3
47	223-0700220311R	insulation post	Φ7.5*3.1, nylon66 (UL)	1
48	422-0000120800R	EVA dustproof tape	E9-DUSTC/TAP 12*1mm black	0.25

Remark:Colour Difference Table

R/N	P/N	PART NAME	DESCRIPTION	QTY
1	300-1020410000R	front panel	screened, light grey(silver anodized)	1
	300-1020420000R		screened, light grey(black anodized)	1
2	215-1027410001R	button cap	silver painted,ABS757#	1
	215-1027420001R		black painted,ABS757#	1
6	340-1020410000R	function button	silver painted	6
	340-1020410001R		black painted	6
7	215-1027410000R	power button	silver painted,ABS757#	1
	215-1027420000R		black painted,ABS757#	1
13	309-1020410001-1R	main chassis	silver painted	1
	309-1020420001-1R		black painted	1
19	319-1027410001R	side panel	sand blasting,anodized silver	2
	319-1027420001R		sand blasting,anodized black	2
20	534-3002061006R	screw	M3*6NI	20
	534-3002060906R		M3*6Black	20
24	524-2923090616R	screw	ST2.9*9.5NI	7
	524-2923091016R		ST2.9*9.5Black	7
25	524-2025050601R	screw	M2*5NI	1
	524-2023061001R		M2*6.5Black	1
40	300-1020410001R	CD door	finish and silver anodized	1
	300-1020420001R		finish and black anodized	1
44	302-1020410000R	top cover	sand blasting,anodized silver	1
	302-1020410001R		sand blasting,anodized black	1
45	534-3002100606R	screw	M3*10NI	13
	534-3002100906R		M3*10Black	13

ELECTRONIC PARTS LIST

8200CD-Electronic Bom-P1/10

R/N	P/N	PART/NAME	DESCRIPTION	QYT	LOCATION
1	088-1020410400R	Power Switch PCBA	AUDIOLAB8200CD PCBA	1	
2	041-1376000000QR	Switch	SWITCH MAINS 2P SDDSA 3289A	1	
3	060-4180310312R	Wire	UL1672 18 AWG BLUE L=310MM	1	
4	060-4180310112R	Wire	UL1672 18AWG BROWN L=310MM	1	
5	073-0102003011R	CD mechanism	ASA 8829C+SONY KM-313AAM	1	
6	055-4322007155R	FFC Cables	22PIN, PH=1MM, L=70MM, black	1	
7	055-4424024255R	FFC Cables	24PIN, PH=0.5MM, L=240MM,	1	
8	022-2000042382R	Power Transformer	AUDIOLAB 8200CD IN=115V/ 230V OUT1=11.7V OUT2=14.2V*2	1	
9	053-1020410152R	Power Switch PCB	AUDIOLAB8200CD PCB 1 layer FR4 1.6 mm	1	
10	008-1003025005R	Capacitor	MKT 10NF/250V 10%	2	
11	055-0402009311R	Cables	2P L=90MM UL1672 18# 3.96mm	1	
12	031-2200504121HR	FUSE	T1A/250V 213 5*20MM LITTELFUSE	1	
13	044-3070000000R	Power Cables	RF-2004-C-4.8COA 250AC	1	
14	055-0205008244R	Cables	1007 AWG26,5PIN L=80MM,2.0MM	1	
15	088-1020410001R	PCBA	AUDIOLAB8200CD PCBA	1	
16	006-1014051123AR	Electrolytic Capacitor	100uF,10V,105DegC,5mmDia,11mm H,2.5mmPitch, Lelon,20%	7	C38.C39.C43.C44.C45. C46.C74
17	006-1024080803R	Electrolytic Capacitor	1000uF 4V OCRZ 8*8 20% 105 Lelon	25	C16.C17.C18.C19.C20. C21.C22.C23.C24.C25. C26.C27.C30.C31.C32. C33.C34.C52.C53.C54. C55.C56.C82.C83.C84
18	006-1024101633AR	Electrolytic Capacitor	1000U/16V ±20% φ10*16MM Lelon RGA 105°C	15	C102.C103.C104.C107. C108.C109.C112.C113. C114.C117.C118.C119. C90.C91.C92
19	006-2214061133R	Electrolytic Capacitor	220uF,16V,105DegC,6.3mmDia,11m mH,5mmPitch,Lelon,20%	6	C105.C110.C115.C120. C94.C96
20	006-2224102023R	Electrolytic Capacitor	2200uF,10V,105DegC,10mmDia,20m mH,5mmPitch,Lelon,20%	5	C63.C64.C65.C88.C89
21	006-4714061113R	Electrolytic Capacitor	470uF,6.3V,105DegC,6.3mmDia,11m mH,5mmPitch,Lelon,20%	24	C13.C14.C29.C36.C37. C40.C41.C47.C49.C59. C62.C66.C68.C69.C70. C71.C72.C73.C75.C77. C78.C79.C86.C87
22	006-4714081123AR	Electrolytic Capacitor	470uF,10V,105DegC,8mmDia,11.5m mH,5mmPitch,Lelon,20%	4	C138.C139.C140.C141
23	006-4724122523R	Electrolytic Capacitor	4700uF,10V,105DegC,12mmDia,25m mH,5mmPitch,Lelon,20%	24	C122.C123.C126.C127. C130.C131.C134.C135. C142.C143.C144.C145. C146.C147.C148.C149. C162.C163.C164.C165.

ELECTRONIC PARTS LIST

8200CD-Electronic Bom-P2/10

24	006-4724163143R	Electrolytic Capacitor	4700uF,25V,105DegC,16mmDia,31.5mmH,7.5mmPitch Lelon,20%	8	C170.C171.C172.C173.C174.C175.C176.C177
25	006-6824163133R	Electrolytic Capacitor	6800uF,16V,105DegC,16mmDia,31.5mmH,7.5mmPitch Lelon,20%	3	C178.C179.C180
26	016-1031130001R	Foil capacitor	10NF/100V 2.5% EVOX RIFA (PFR5103J100J13L4)	4	C1.C2.C7.C8
27	016-2220802201R	Foil capacitor	2.2nF 100V 5%	8	C10.C11.C12.C3.C4.C5.C6.C9
28	017-1380000000R	IC	LM317T(1.5A) TO-220 (ST)	5	U60.U61.U64.U65.U77
29	017-1390000000R	IC	LM337T(1.5A) TO-220 Fairchild	4	U59.U62.U63.U66
30	017-5440000022R	IC	L7805CV (TO220) ST	7	U67.U84.U85.U86.U87.U89.U90
31	017-5730000000R	IC	17812T 1.5A TO-220 ST	1	U57
32	017-7510000000R	IC	L7808 +8v TO220 ST	3	U58.U68.U69
33	024-1120101011R	Relay	HJR1-2C-12VDC	2	RLY2.RLY5
34	031-2200527121HR	Fuse	T1.6A/250V 5*20MM LITTELFUSE	3	F1.F2.F3(A&B)
35	044-5520000000R	USB	UBSRA-004 Gold Plated	1	CN4
36	044-4850000000R	Stereo Jack	Dual 3.5mm	1	CN5
37	044-4860000000R	RCA + Toslink Combo	JSR1583 16Mbps Optical receiver	2	CN1.CN2
38	044-5500000000R	RCA Jack	1P AEC RJ-255BKPL(PBT)G-TEF-BK	1	CN6
39	044-5510000000R	RCA Jack	1P AEC RJ-255BKPL(PBT)G-TEF-RD	1	CN10
40	044-5550000000R	XLR Jack	PCB Mount 90Deg XLR Jack LX-1601H-3	2	CN7.CN9
41	044-5690000000R	RCA + Toslink Combo	16Mbps ,JST1583 Optical Transmitter	1	CN3
42	056-2105001190R	5 pins Header	5pin、PH2.0MM、	1	CN15
43	056-2106001190R	6 pins Header	6pin、PH2.0MM、	1	CN14
44	056-0106003300R	6 pins Header (3.96)	6PIN 3.96PH	1	CN12
45	059-8467202330R	Crystal	Crystal 84.6720MHz AT 5th OT	1	X1
46	277-0010000000R	Transistor Pad	TW-1	14	
47	050-0400000000R	Transistor Fastness	10*6MM TR-1	6	U84 Support.U85 Support.U86Support.U87 Support.U89 Support.U90 Support.
48	323-1117000331R	Crystal Base InsulatorQW-1	QW-1 4.4*10.8*1.0	1	X1a
49	604-1020410000R	Radiator	22*15*30MM	14	U57、U58、U59、U60、U61、U62、U63、U64、U65、U66、U67、U68、U69、U77

ELECTRONIC PARTS LIST

8200CD-Electronic Bom-P3/10

50	537-3001060806R	Screw	M3*6	14	
51	050-0100070211R	Fuse Holder	FUC-2	6	F1(A&B).F2(A&B).F3(A&B)
52	006-1014061143-2R	Electrolytic Capacitor	100uF,25V,105DegC,6.3mmDia,11mmH,5mmPitch, Lelon,20%	5	C106.C111.C116.C121.C93
53	324-0180130100R	Mica	TO-220 18*13MM	10	U59.U60.U61.U62.U63.U64.U65.U66.U77.U58
54	846-0010000001R	Fuse Holder	FUSE-1 (20*11*6MM)	3	F1、 F2、 F3
55	006-3314061123R	Electrolytic Capacitor	330uF, 10V, 105DegC,6.3mmDia,11mmH,5mmPitch, Lelon,20%	20	C124.C125.C128.C129.C132.C133.C136.C137.C48.C50.C51.C57.C58.C60.C61.C67.C76.C80.C85.
56	006-1024081213R	Electrolytic Capacitor	1000uF,6.3V,105DegC,8mmDia,12mmH,3.5mmPitch, Lelon,20%	5	C15.C28.C35.C42.C81
57	002-3900021010R	SMD Resistor	39R, 1%, 0603, 1/10W	1	R350
58	002-1500021010R	SMD Resistor	15R, 1%, 0603, 1/10W	3	R441.R464.R378
59	002-0000011050R	SMD Resistor	0R 0603 5% 50V	11	R105.R353.R355.R64.R77.R92.R61.R74.R89.R103.R377
60	002-1000011010R	SMD Resistor	10K 1% 0603 50V	30	R316.R317.R318.R319.R347.R348.R361.R364.R366.R370.R371.R373.R380.R382.R384.R391.R392.R394.R401.R403.R406.R410.R412.R423.R440.R442.R444.R453.R454.R455
61	002-1001032010R	SMD Resistor	100Ω 1/8W 1% 0805	16	R107.R108.R110.R111.R67.R68.R69.R70.R79.R80.R82.R83.R93.R94.R96.R97
62	002-1001033010R	SMD Resistor	100R 1% SMD 1206	1	R321
63	002-1001039010R	SMD Resistor	100R MELF 0102 1% 1/8W	4	R104.R65.R78.R90
64	002-1004021010R	SMD Resistor	RES 100K OHM 1/10W 1% 0603	13	R359.R362.R367.R368.R379.R385.R388.R389.R395.R402.R405.R409.R301
65	002-1004031110R	SMD Resistor	100k MELF 0102 1% 200V 1/8W VISHAY	4	R242.R243.R260.R261
66	002-1005021010R	SMD Resistor	RES 1M OHM 1/10W 1% 0603	2	R330.R417

ELECTRONIC PARTS LIST

8200CD-Electronic Bom-P4/10

67	002-1101032010QR	SMD Resistor	SMD 110R 1/8W 1% 0805	1	R295
68	002-1803071010R	SMD Resistor	18K 0603 1% 1/16W	4	R426.R427.R428.R443
69	002-2202021010R	SMD Resistor	RES 2.2K OHM 1/10W 1% 0603	14	R299.R300.R303.R304. R306.R307.R308.R320. R372.R383.R386.R387. R393.R452
70	002-2203031010R	SMD Resistor	0603 22K1/8W1%	2	R418.R425
71	002-2702032010R	SMD Resistor	2.7KΩ 1/8W 1% 0805	4	R277.R279.R281.R283
72	002-3092061010R	SMD Resistor	3.09K, 1%, 0603, 1/10W	1	R314
73	002-3300011010QR	SMD Resistor	33R 1/16W 1%	1	R374
74	002-3301032010R	SMD Resistor	330Ω 1/8W 1% 0805	1	R459
75	002-3302061010R	SMD Resistor	3.3K, 1%, 0603, 1/10W	1	R451
76	002-3304061010R	SMD Resistor	330K, 1%, 0603, 1/10W	1	R429
77	002-3901032010R	SMD Resistor	390Ω 1/8W 1% 0805	1	R397
78	002-3902031010R	SMD Resistor	0603 3.9K1/8W1%	1	R449
79	002-4700021010R	SMD Resistor	47R 0603 1/10W 1%	3	R375.R376.R415
80	002-4700059001R	SMD Resistor	47R 0.1%, 1/4W 0204 MELF	8	R1.R11.R12.R16.R17.R 2.R6.R7
81	002-4701021010R	SMD Resistor	470R 0603 1/10W 1%	6	R323.R419.R421.R422. R432.R456
82	002-4701032010R	SMD Resistor	470Ω 1/8W 1% 0805	4	R276.R278.R280.R282
83	002-4702021010R	SMD Resistor	RES 4.7K OHM 1/10W 1% 0603	8	R315.R322.R346.R416. R420.R430.R431.R445
84	002-4702032010R	SMD Resistor	4.7K 1/8W 1% 0805	4	R265.R268.R271.R275
85	002-4709049010R	SMD Resistor	4R7 MELF 0204 1% 250V 1/4W	12	R10.R112.R113.R15.R2 0.R5.R71A.R71B.R84.R 85.R98.R99
86	002-5601032010R	SMD Resistor	560Ω 1/8W 1% 0805	4	R263.R267.R270.R273
87	002-6801059001R	SMD Resistor	680R 0.1%, 1/4W 0204 MELF	8	R13.R14.R18.R19.R3.R 4.R8.R9
88	002-7500021010R	SMD Resistor	75R 1/10W 0603 1%	4	R286.R287.R290.R291
89	002-8202061010R	SMD Resistor	8.2K, 1%, 0603, 1/10W	2	R448.R450
90	002-8200032010R	SMD Resistor	SMD0805 82R 1%	4	R60.R73.R87.R101
91	007-1000001060R	SMD Capacitor	10PF/50V NPO 0603K	3	C334.C341.C199
92	007-4708051061R	SMD Capacitor	4.7pF, 50V, 0603, NPO, 5%	5	C559.C570.C581.C592. C204

ELECTRONIC PARTS LIST

8200CD-Electronic Bom-P5/10

93	007-1000061060R	SMD Capacitor	10NF 50V X7R 0603 1/16W 10%	32	C201.C215.C228.C235. C244.C256.C284.C292. C300.C302.C304.C306. C355.C390.C392.C403. C407.C409.C411.C413. C455.C457.C459.C461. C463.C465.C467.C480. C482.C485.C487.C497
94	007-1000072060R	SMD Capacitor	10nF, 200V, 0805, X7R, 20%	11	C509.C510.C511.C512. C513.C515.C517.C518. C519.C520.C521
95	007-1001031061R	SMD Capacitor	0603 100P/50V 5% MURATA	2	C363.C376
96	007-1001052060QR	SMD Capacitor	100PF50V 5% NPO 0805	2	C746.C747
97	007-1002051063R	SMD Capacitor	1nF 0603 50v 5% COG	6	C205.C362.C484.C498. C99.C100
98	007-1004052060R	SMD Capacitor	100nF 50V 5% 0805	18	C471.C507.C508.C514. C516.C527.C529.C532. C536.C540.C556.C561. C564.C568.C578.C583. C586.C590
99	007-1005051060R	SMD Capacitor	1uF 0603 25v 10% X7R	8	C357.C358.C359.C360. C361.C364.C366.C436
100	007-1005061022R	SMD Capacitor	1U 10V 0306 10%	17	C181.C182.C183.C184. C185.C186.C187.C188. C189.C190.C191.C192. C193.C194.C195.C196. C197
101	007-1500001060R	SMD Capacitor	15PF/50V NPO 0603K	1	C202
102	007-2200031061R	SMD Capacitor	0603 22P/50V 5% NPO	6	C211.C279.C287.C295. C388.C389
103	007-2203051061R	SMD Capacitor	0603 22N/50V 5% NPO MURATA	1	C477
104	007-2203063141R	SMD Capacitor	22n/X7R/200V 1206 10%	10	C331.C332.C472.C473. C522.C523.C524.C525. C551.C744
105	007-2702051050R	SMD Capacitor	GRM188R71H272KA01D (MURATA)	1	C505
106	007-3009061060R	SMD Capacitor	3P 50V 10% 0603 (EZJZ1V500AA)	3	ESD1.ESD2.ESD3
107	007-3302051050R	SMD Capacitor	GRM188R71H332KA01D (MURATA)	1	C504

ELECTRONIC PARTS LIST

8200CD-Electronic Bom-P6/10

108	007-4700051060R	SMD Capacitor	47PF/50V 0603 5%	12	C437.C438.C439.C440. C441.C442.C443.C444. C445.C446.C447.C448
109	007-4703051050R	SMD Capacitor	GRM188R71H473KA01D (MURATA)	1	C475
110	007-4705051010R	SMD Capacitor	0603 4.7U/6.3V 5% MURATA	30	C207.C214.C227.C234. C243.C255.C267.C273. C283.C291.C299.C301. C303.C305.C338.C343. C346.C351.C396.C397 C402.C418.C421.C428. C431.C474.C489.C213. C226.C254
111	007-6800051060R	SMD Capacitor	0603 680PF 50V 5%	2	C490.C491
112	007-8209051063R	SMD Capacitor	8.2pF, 50V, 0603, COG, 5%	1	C203
113	017-1027000000R	SMD IC	LPC2103FBD48 PHILIPS LQFP48	1	U75
114	017-1055000000R	IC	AM5810FM AMTEK	1	U76
115	017-1056000000R	IC	SAA7824HL LQFP80 NXP	1	U74
116	017-1083000000R	IC	TC74VHC595FT TSSOP16 Toshiba	2	U31.U32
117	017-1089000000R	IC	NC7SZ157P6X SC70-6 Fairchild	5	U23.U24.U25.U26.U30
118	017-1091000000R	IC	NE5532D SOIC-8 TI	5	U2.U3.U4.U70.U71
119	017-1092000000R	IC	BC847BS SOT-363 Philips	4	Q14.Q24.Q35.Q4
120	017-1093000000R	IC	BC857BS SOT-363 Philips	4	Q18.Q28.Q38.Q8
121	017-1126000000R	IC	ZHCS400 SOD323 ZETEX	12	D11.D12.D13.D14.D17. D18.D20.D23.D24.D32. D33.D34
122	017-1250000000R	IC	NC7SZ74K8X US8 : Fairchild	10	U10.U16.U18.U20.U7.U 78.U79.U81.U82.U9
123	017-1251000000R	IC	NC7SZ04P5 SC70-5 FAIRCHILD	6	U11.U12.U13.U14..U73. U80
124	017-1252000000R	IC	NC7SZ86P5X SC70-5 FAIRCHILD	1	U8
125	017-1253000000R	IC	NC7WZ04P6X SC70-6 FAIRCHILD	2	U6.U83
126	017-1254000000R	IC	TAS1020B TQFP48 Ti	1	U28
127	017-1267000000R	IC	AT24C64CN-SH-T SO-8 ATMEL	1	U29
128	017-1283000000R	IC	ICS525-01, SSOP28 IDT	1	U27
129	017-1285000000R	IC	1117-1.8V,SOT-223, NS	1	U72
130	017-8160000000R	IC	NE5534D SO-8 W=3.9MM TI	4	U5.U15.U17.U19
131	027-2205918000R	SMD Inductor	22uH, 13x9.5mm, 3316, 20%	5	L5.L6.L7.L8.L9
132	067-2200002103R	SMD Diode	S2J Silicon Rectifier Diode 2A 600V, SMA (D0-214)	8	D38.D39.D40.D41.D42. D43.D44.D45
133	018-1400056228QR	SMD Transistor	BCX56 NPN 1W SOT-89	1	Q141

ELECTRONIC PARTS LIST

8200CD-Electronic Bom-P7/10

134	018-1400846227R	SMD Transistor	BC846 BLT1 SOT-23 PHILIPS	11	Q119.Q122.Q13.Q133. Q16.Q23.Q26.Q3.Q33.Q 36.Q6
135	018-1500520227R	SMD Transistor	BFR520 SOT23 PHILIPS	2	Q105.Q106
136	018-4500690224R	SMD Transistor	FZT690B SOT-223 Zetex	4	Q10.Q19.Q30.Q39
137	018-4500790224R	SMD Transistor	FZT790A SOT-223 Zetex	4	Q20.Q29.Q40.Q9
138	018-5600070227R	SMD Transistor	BAV70LT1G SOT-23 ON	1	D35
139	022-1009044385R	SMD Transformer	EI ER9.5 SMD	2	T1.T2
140	027-1025520000R	SMD Inductor	1000UH 13*9.4MM 3316 20%	4	L1.L2.L3.L4
141	027-3383022000R	SMD Inductor	330nH Wire Wound 0805 5% Inductor	1	L10
142	027-4793022000R	SMD Inductor	4.7uH Wire Wound 0805 5% Inductor	1	L11
143	044-4420000000R	FFC Connector	24FLZ-SM2-TB JST 24PIN	1	CN16
144	053-104342B600R	AUDIOLAB8200CDQ Main PCBREV1.02	4 layer FR4, 1.6MM, 1OZ, Blue Solder,	1	PCB
145	056-8122551190R	FFC Connector	PH=1MM 22P RoHS	1	CN13
146	067-7700316119R	SMD Diode	BAS316 SOD323 PHILIPS	1	D36
147	002-2204031050R	SMD Resistor	220K 0603 RC03K224JT	1	R302
148	002-2201032010R	SMD Resistor	220Ω 1/8W 1% 0805	6	R296、R351、R457、 R446、R447、R460
149	002-1501032010R	SMD Resistor	150Ω 1/8W 1% 0805	1	R463
150	007-1005062090R	SMD Capacitor	1UF/25V 0805 10%	24	C405、C406、C468、 C526、C528、C530、 C531、C533、C534、 C535、C537、C538、 C539、C541 C542、C543、C544、 C545、C546、C547、 C548、C549、C550、 C371
151	007-2206052010R	SMD Capacitor	0805 22U/6.3V X5R 20%	14	C200、C333、C339、 C340、C348、C354、 C481、C483、C486、 C488、C496、C506、 C97、C98
156	018-4302907227AR	SMD Transistor	MMBT2907ALT1G SOT-23 ON	1	Q134
157	067-7700099112R	SMD Capacitor	BAV99 DUAL SOT-23 Philips/nxp	16	D1.D10.D15.D16.D19.D 2.D21.D22.D25.D26.D2 7.D3.D37.D4.D9.D46
158	002-1001021010R	SMD Resistor	RES 100 OHM 1/10W 1% 0603	30	R293.R297.R298.R305. R310.R324.R325.R326. R327.R328.R329.R349. R357.R358.R360.R363. R365.R381.R400.R404.
159	002-3301061010R	SMD Resistor	330R, 1%, 0603, 1/10W	2	R433.R424

ELECTRONIC PARTS LIST

8200CD-Electronic Bom-P8/10

160	002-2700061010R	SMD Resistor	27R, 1%, 0603, 1/10W	5	R311.R313.R356.R369. R390
161	018-1400856227R	SMD Transistor	BC856 BLT1 SOT-23	18	Q120.Q121.Q15.Q17.Q 25.Q27.Q34.Q37.Q5.Q7 .Q1.Q2.Q11.Q12.Q21.Q 22.Q31.Q32
162	007-2201001030R	SMD Capacitor	220NF/16V Y5V 0603K	3	C500.C501.C502
163	007-2204061060R	SMD Capacitor	220NF 50V 0603 10%	1	C492
164	035-1003062051R	SMD Inductor	1000ohm/100MHz 0805 BLM21BD102SN1D	29	L12.L13.L14.L15.L16.L1 7.L18.L19.L20.L21.L22. L23.L25.L27.L28.L29.L3 0.L31.L32.L33.L34.L35. L36.L37.L38. L39.L26.L24.L40
165	002-2200032010R	SMD Resistor	22Ω 1/8W 1% 0805	1	R462
166	002-1502021010R	SMD Resistor	RES 1.5K OHM 1/10W 1% 0603	20	R312.R407
167	017-1354000000R	IC	Ti SN65LVDS9637D SO8 ROHS	1	U22
168	018-1080617227R	SMD Transistor	FMMT617 SOT23 15V 3A 625mW ZETEX	2	Q108、Q113
169	018-0002222227QR	SMD Transistor	MMBT2222A NPN SMD SOT-23	6	Q114.Q115.Q116.Q139. Q140.Q142
170	018-1080617227R	SMD Transistor	FMMT617 SOT23 15V 3A 625mW ZETEX	7	Q107.Q108.Q109.Q110. Q111.Q112.Q113
171	002-2261032010R	SMD Transistor	226R, 1%, 0805, 1/8W	1	R396
172	002-1503032010HR	SMD Transistor	15K 1% 100PPM 0805 1/8W VISHAY CRCW080515K00FKEA	2	R458.R461
173	017-1295000000R	IC	LM1117MPX-ADJ SOT-223 N03A NS	1	U88
174	088-1043424000R	PCBA	AUDIOLAB8200CDQ Front PCB	1	
175	006-1014051123AR	Electrolytic Capacitor	100uF, 10V, 105DegC, 5mmDia, 11mm H, 2.5mmPitch, Lelon, 20%	3	C800.C801.C802
176	039-3000000000R	Tact Switch	TC-17XA 7.8*7.8*5	10	SW1.SW2.SW3.SW4.S W5.SW6.SW7.SW8.SW 9.SW10
177	052-2100000000R	Remote Receiver	TSOP4836	1	U101
178	277-0120000000R	Receiver Socket	RCEA-5 NYLON66 (UL) 94V2,	2	U101
179	056-4102220000R	Socket	JS-1001-02	1	CN101
180	057-2541202161R	Socket PIN	PH=2.54mm 16pin	1	
181	019-0011022000QR	LED	LED RED	1	
182	055-0302015333R	Cables	2P L=150MM UL1007 24# 2.54MM	1	LED Line
183	030-6121000000-1R	LCD Display	BTC-2002K-GDWD-G-B- A01, 20*2DFSTN	1	LCD1
184	044-5750000000R	Stereo Jack	PJ-602-EP	1	
185	056-4105221070R	Socket	PH2.54 5P RoHS H=7MM	1	
186	055-0305040244R	Cables	1007 AWG26, 5PIN L=400MM, 2.54MM	1	

ELECTRONIC PARTS LIST

8200CD-Electronic Bom-P9/10

187	007-1001051060R	SMD Capacitor	100NF 0603 10% Murata 25V	202	C198.C206.C208.C209. C210.C212.C216.C217. C218.C219.C220.C221. C222.C223.C224.C225. C229.C230.C231.C232. C233.C236.C237.C238. C239.C240.C241.C242. C245.C246.C247.C248. C250.C251.C252.C253. C257.C258.C259.C260. C261.C262.C263.C264. C265.C266.C268.C269. C270.C271.C272.C274. C275.C277.C278.C280. C281.C282.C285.C286. C288.C289.C290.C293. C294.C296.C297.C298. C307.C308.C309.C310. C311.C312.C313.C314. C315.C316.C317.C318. C319.C320.C321.C322. C323.C324.C325.C326. C327.C328.C329.C330. C335.C336.C337.C342. C344.C345.C347.C349. C350.C352.C353.C356. C365.C367.C368.C369. C370.C372.C373.C374. C375.C377.C378.C380. C383.C386.C387.C391. C393.C394.C395.C398. C399.C400.C401.C404. C408.C410.C412.C414. C415.C416.C417.C419. C420.C422.C423.C424. C425.C426.C427.C429. C430.C432.C433.C434. C435.C449.C450.C451. C452.C453.C454.C456. C458.C460.C462.C464. C466.C469.C470.C476. C478.C479.C493.C494. C495.C499.C503.C552. C553.C554.C555.C557. C560.C562.C563.C565. C567.C569.C571.C572. C573.C574.C575.C576. C577.C579.C582.C584. C585.C587.C589.C591. C593.C594.C595.C745 C249.C432BC198.C206. C208.C209.C210.C212. C216.C217.C218.C219. C220.C221.C222.C223. C224.C225.C229.C230. C231.C232.
-----	-----------------	---------------	---------------------------	-----	---

ELECTRONIC PARTS LIST

8200CD-Electronic Bom-P10/10

189	053-1043420648R	AUDIOLAB8200CDQ Front PCB, A00	2Layer FR4, 1.6MM, 1OZ	1	PCB
190	007-1001051060R	SMD Capacitor	100NF 0603 10% Murata 25V	4	C803.C804.C805.C812
191	007-1002051063R	SMD Capacitor	1nF 0603 50v 5% COG	11	C807.C820.C821.C822. C823.C824.C825.C826. C827.C828.C829
192	007-3300051050R	SMD Capacitor	GRM1885C1H330JA01D (MURATA)	10	C809.C810.C811.C813. C814.C815.C816.C817. C818.C819
193	007-1001031061R	SMD Capacitor	0603 100P/50V 5% MURATA	2	C806.C808
194	007-2203063141R	SMD Capacitor	22n/X7R/200V 1206 10%	4	C830.C831.C832.C833
195	017-5190000013R	IC	P89V51RB2BBC SOT-389-1	1	U100
196	067-7700316119R	SMD Diode	BAS316 SOD323 PHILIPS	1	D100
197	035-1003062051R	SMD Inductor	1000ohm/100MHz 0805 BLM21BD102SN1D	3	L100.L101.L102
198	056-8122551190R	FFC Connector	PH=1MM 22P RoHS	1	CN100
199	002-2201021010R	SMD Resistor	220R 0603 1/10W 1%	1	R513
200	018-1400856227R	SMD Resistor	BC856 PNP BLT1 SOT-23	3	Q200.Q201.Q202
201	002-3300011010QR	SMD Resistor	33R 1/16W 1%	11	R500.R501.R502.R503. R504.R505.R506.R507. R508.R509.R515
202	002-4702021010R	SMD Resistor	RES 4.7K OHM 1/10W 1% 0603	4	R510.R518.R519.R520
203	002-2002011010R	SMD Resistor	0603 2K 1% 1/16W	5	R514.R516.R517.R511. R512



UK: IAG House, Sovereign Court, Ermine Business Park, Huntingdon, Cambs, PE29 6XU, UK
UK : Tel: + 44 (0) 1480 447700. Fax: + 44 (0) 1480 431767, www.audiolab.co.uk
CHINA: Sanecore Industrial Park, Jiuwei, Xixiang, Shenzhen, China 518102
CHINA: Tel: + 86-755-2748-4420. Fax: + 86-755-2965-1484
The information in this service manual is subject to change without notice.
All rights reserved © IAG Group Ltd. Audiolab is a member of the IAG Group.