

Figure 1a
'Classical' feedback topology

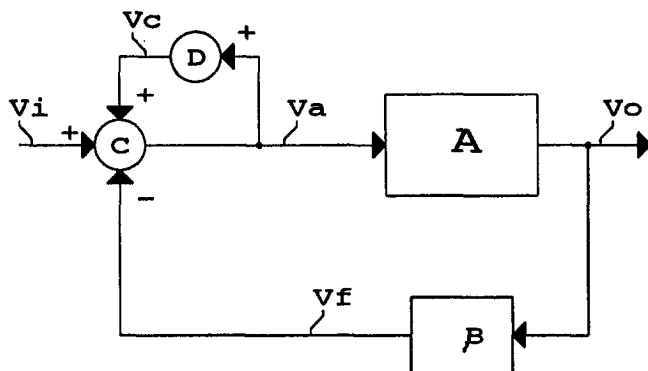


Figure 1c
Using the input to 'A' as the
'inversely proportional to A' fraction of v_o

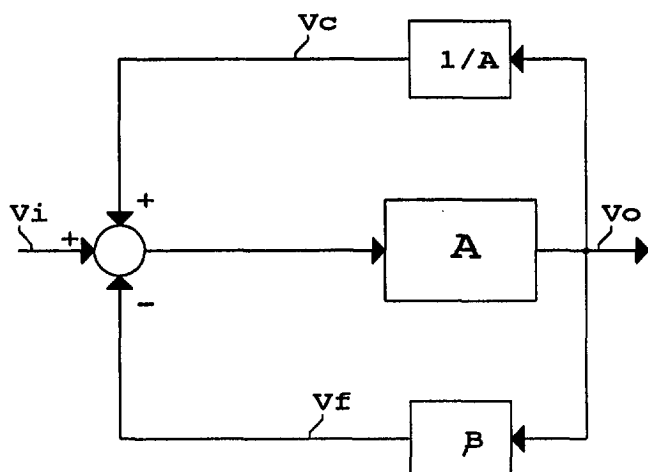


Figure 1b

Conceptual new topology

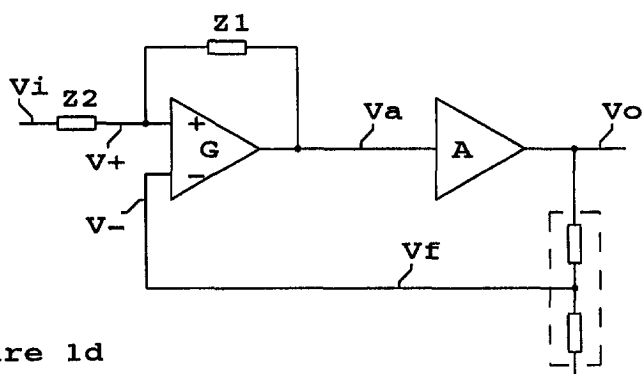


Figure 1d

Realisation with gain block G and Z_1 , Z_2 , replacing C and D in Fig. 1c.

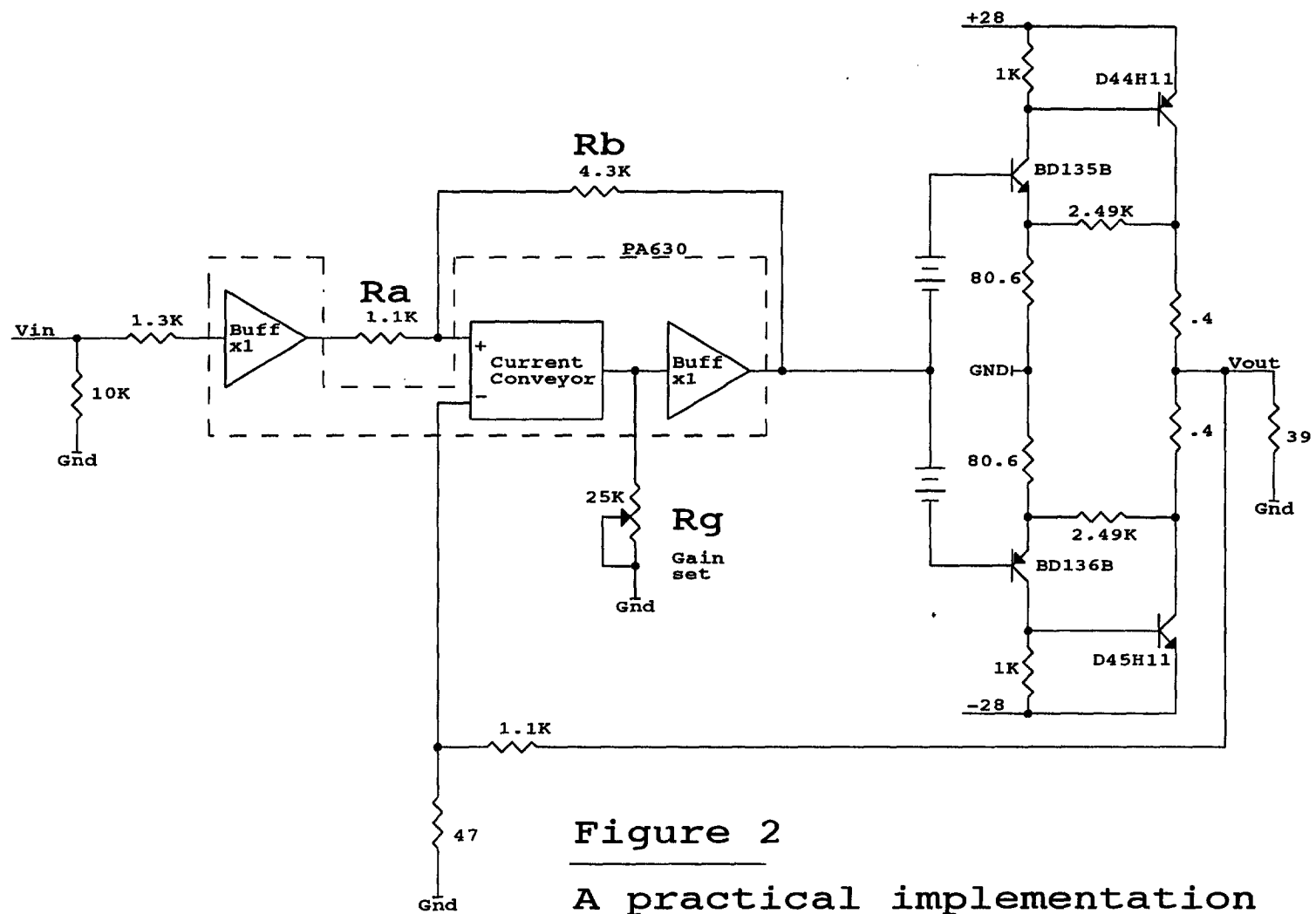


Figure 2

A practical implementation

Figure 3, THD+N(%) vs Freq(Hz) @ 6Vrms output. Lower curve is with Rb (Fig.2).

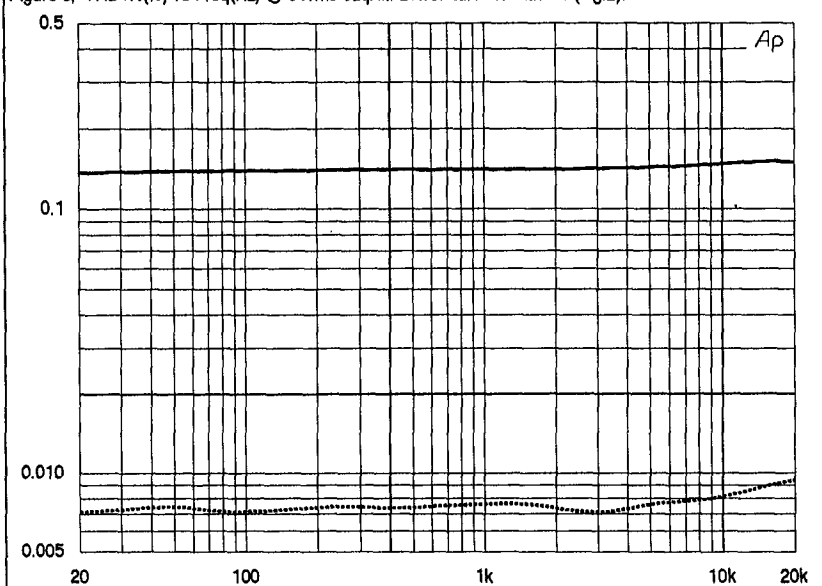


Figure 4b, Harmonic spectrum in dB re 6Vrms, 3kHz output. Rb (Fig. 2) inserted.

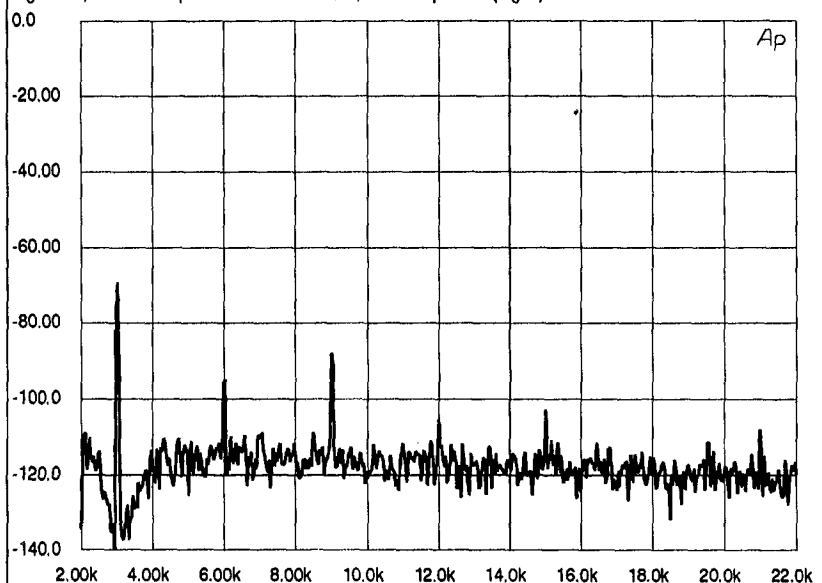


Figure 4a, Harmonic spectrum in dB re 6Vrms, 3kHz output. Rb (Fig. 2) removed.

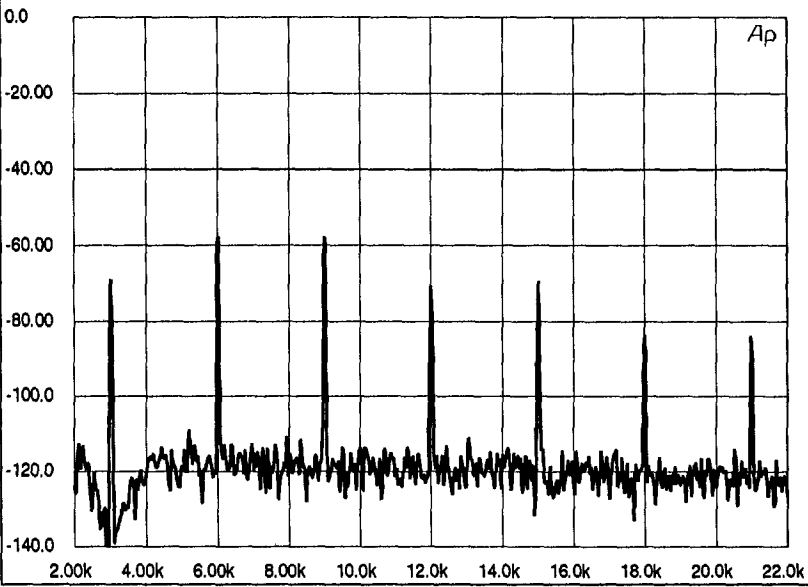


Figure 5, THD+N(%) vs Output level(Vrms). Lower curve is with Rb (Fig. 2).

